



Article

Identification of *Escherichia* spp. strains in street-vended beverages and associated preparation surfaces using 16S rRNA analysis

Chong, Soo Yee, Rao, Pasupuleti Visweswara and Soon, Jan Mei

Available at <http://clock.uclan.ac.uk/20933/>

Chong, Soo Yee, Rao, Pasupuleti Visweswara and Soon, Jan Mei ORCID: 0000-0003-0488-1434 (2017) Identification of Escherichia spp. strains in street-vended beverages and associated preparation surfaces using 16S rRNA analysis. International Food Research Journal, 24 (4). pp. 1811-1818. ISSN 1985-4668

It is advisable to refer to the publisher's version if you intend to cite from the work.

For more information about UCLan's research in this area go to <http://www.uclan.ac.uk/researchgroups/> and search for <name of research Group>.

For information about Research generally at UCLan please go to <http://www.uclan.ac.uk/research/>

All outputs in CLoK are protected by Intellectual Property Rights law, including Copyright law. Copyright, IPR and Moral Rights for the works on this site are retained by the individual authors and/or other copyright owners. Terms and conditions for use of this material are defined in the [policies](#) page.

Identification of *Escherichia* spp. strains in street-vended beverages and associated preparation surfaces using 16S rRNA analysis

¹Chong, S. Y., ¹Rao, P. V. and ^{2*}Soon, J. M.

¹Faculty of Agro-Based Industry, Universiti Malaysia Kelantan Jeli Campus, 17600 Jeli, Kelantan, Malaysia

²International Institute of Nutritional Sciences and Applied Food Safety Studies, School of Sport and Wellbeing, University of Central Lancashire, Preston, PR1 2HE UK

Article history

Received: 25 May 2016

Received in revised form:

30 June 2016

Accepted: 16 July 2016

Abstract

Street-vended beverages are commonly prepared by mechanical extraction of the pulp, usually unpasteurised and requires multiple handling steps. Foodborne pathogens transmitted via skin of street vendors or via faecal-oral route may contaminate the preparation surfaces and beverages. The aim of this study is to identify *Escherichia* spp. strains of street-vended beverages and their associated preparation surfaces using 16s rRNA analysis. The hygienic practice of vendors was represented by *Staphylococcus* spp. analysis and *Staphylococcus aureus* is not detected in beverages and associated preparation surfaces. A total of 80 samples (18 beverages, 15 swab samples and 47 direct film samples) were collected followed by enumeration of microbial load. Polymerase Chain Reaction (PCR) amplification and 16S ribosomal ribonucleic acid (rRNA) sequencing were carried out. Results of 16S rRNA sequence analysis indicated that three gram-negative isolates were identified as *Escherichia coli* RM9387 (Accession no. CP009104.1), *Escherichia coli* c164 (Accession no. JQ781646.1) and *Escherichia fergusonii* E10 (Accession no. KJ626264.1) with similarity value of 99% respectively.

Keywords

Coconut water

Escherichia fergusonii

Hygiene

Staphylococcus aureus

Sugarcane juice

© All Rights Reserved

Introduction

In developing countries, beverages sold by street-vendors are widely consumed by the society (Al Mamun *et al.*, 2013). In urban as well as rural area, street-vended consumables are becoming popular as they are inexpensive, convenient and attractive (World Health Organisation, 1996). Besides, such beverages are readily available and affordable to the population (Mahale *et al.*, 2008). The World Health Organization (WHO) defined street-vended foods as “foods and beverages prepared and/or sold by vendors in streets and other public places for immediate consumption or consumption at a later time without further processing or preparation” (WHO, 1996). Unpasteurised clouded, untreated juices are widely consumed because of the satisfactory flavour attributes. For instance, coconut water and sugarcane juice can be easily prepared by mechanical extraction of the pulp and liquid of mature fruits (Nonga *et al.*, 2014).

In Malaysia, the preponderance of foodborne disease as an important public health problem is alarmingly high as it causes significant impact on economic and trade of the country (Sharifa *et al.*, 2013). Based on the current society, there are a few

phenomenon that are detected and encountered. The consumers emphasize on sensory taste instead of the hygienic level of beverages prepared by vendors. Furthermore, the contamination of beverages and unhygienic preparation surfaces that leads to foodborne outbreaks and will harm the safety of consumers. Sources of contamination may vary (Tambekar *et al.*, 2009) and pathogenic organisms are able to enter and contaminate foods and beverages through damaged or injured plant and fruit surfaces that occur during growing, harvesting as well as improper washing during preparation. Such beverages are identified as potential sources of bacterial pathogens notably coliform, *Escherichia coli*, and *Staphylococcus aureus* (Mukhopadhyay *et al.*, 2011). Tan *et al.* (2013) reported that in Malaysia, transmission of bacteria such as *S. aureus* into food is mainly due to the unhygienic practice of food handlers.

Various types of pathogenic microbes in water source including bacteria, viruses, and protozoa have been linked to human disease caused by the usage of contaminated food and water (Kinge *et al.*, 2008). These water-related diseases include diarrhoea, typhoid, hepatitis, cholera, and dysentery (Kinge *et al.*, 2008). In developing countries, limited access to

*Corresponding author.

Email: jmssoon@uclan.ac.uk

Tel: (+44)1772 89 4567

safe water and substandard sanitation continues to jeopardise human health. According to WHO (2003), since then, pathogenic bacteria have been identified as the utmost etiological agent in the vast majority of the waterborne outbreak reported worldwide. Hence a study of the street-vended beverages was undertaken to assess the safety for human consumption and as possible sources of bacterial pathogens.

Materials and Methods

Sampling

Fresh, unpasteurised sugarcane juice (n=9) and coconut water samples (n=9) were collected from street vendors in Jeli District, Malaysia. All samples were stored below 4°C and transported to the laboratory for microbiological analyses. The pH values of all sampled beverages were measured.

Swabbing of preparation surfaces

Samples were collected from vendors' left and right palm (72 cm² on each palm) using sterile 3M swabs pre-moistened with 0.1% sterile peptone water (Oxoid, England). The surface points (upper pressing unit, lower pressing unit) (100 cm²) of sugarcane extractor, coconut opener (54 cm²) and apron (100 cm²) were swabbed. Swabbing was performed horizontally and vertically (Harrigan, 1998). In addition, Sanita-kun (JNC Corporation, Japan) direct stamping was also carried out on all preparation surfaces. Then, the swabs and Sanita-kun film samples were stored and transported to laboratory under cold-storage conditions (Tan *et al.*, 2014).

Bacteriological examination

Total Plate Counts (TPCs) were determined using plate count agar (Oxoid, England) pour plate method and incubated at 37°C for 24 hours. Visible colonies were counted using Bacterial Colony Counter (Funke Gerber, Germany) (Harrigan, 1998). The existence of coliform was determined using multiple-tube fermentation technique and the three-tube most-probable-number (MPN) method. Appropriate dilutions of samples were inoculated into triplicates of Lauryl Sulfate Tryptose broth (Merck, Germany) (Bagci and Temiz, 2011). Then, one loopful of culture from presumptive positive Lauryl Sulfate Tryptose tubes were confirmed by sub-culturing into Brilliant Green Bile broth (R and MJL Chemicals, U.K.) and further incubated at 37°C for 24 hours (Bagci and Temiz, 2011).

Determination of *Escherichia coli*

One loopful of positive Lauryl Sulfate Tryptose

broth were transferred into EC broth (Oxoid, England) and incubated. Presumptive positive tubes were further isolated on Eosin Methylene Blue agar (Merck, Germany) (Mallmann and Darby, 1941) and subjected to IMViC test. For indole production, 0.3 ml of Kovác's reagent (Merck, Germany) were added into incubated tryptone broth (Merck, Germany) containing presumptive *E. coli* colony (Tan *et al.*, 2014). Indole positive colony from nutrient agar was inoculated on Simmons Citrate agar (Oxoid, England) slant for citrate test.

Determination of *Staphylococcus aureus*

For each dilution to be plated, 1 ml of inoculum was aseptically distributed equitably to 3 plates of Baird-Parker agar (Merck, Germany) with Egg Yolk Tellurite Emulsion (Oxoid, England). Presumptive *Staphylococcus aureus* colonies from Baird-Parker agar were transferred into 0.2 ml Brain Heart Infusion broth (Merck, Germany) and emulsified thoroughly for coagulase test. Then, 0.3 ml of rabbit coagulase plasma with EDTA (Remel, United Kingdom) were added to Brain Heart Infusion culture and examined periodically for clot formation (Harrigan, 1998; Kateete *et al.*, 2010).

DNA extraction and agarose gel electrophoresis

Presumptive positive *E. coli* samples were preserved using glycerol stock. Bacteria cells were then inoculated into 5 ml Luria Bertani broth (Merck, Germany) and incubated overnight until the optical density (OD) value of culture falls within the range of 0.8-1.0 at 600 nm (Kinge *et al.*, 2008; Magray *et al.*, 2011). Genomic DNA were then extracted (Fattahi *et al.*, 2013) using G-spin Total Genomic DNA Kit (Intron, Korea). Horizontal agarose 1% w/v slab gel was prepared using agarose (Vivantis, USA), 1X Tris-Acetate-EDTA (40 mM tris-acetate; 20 mM glacial acetic acid and 1.0 mM EDTA, pH 8.0) and 10 µl of 1 mg/ml ethidium bromide (Kinge *et al.*, 2008). DNA ladder of 1 kb and 100 bp and each DNA template with loading dye (Vivantis, USA) were loaded into the well prior to electrophoresis. The agarose gel was electrophoresed for 45 minutes at 80 V and EtBr-stained agarose gel was visualised under UV transilluminator (Kazemi and Hajizadeh, 2012).

Polymerase chain reaction (PCR)

Extracted DNA from isolated bacteria were then used for PCR and 16S rRNA analysis using 16S rRNA universal primers (Forward primer 5'-AGAGTTTGATCCTGGCTCAG-3' and reverse primer 5'-CGGCTACCTTGTACTT-3') (Magray *et al.*, 2011). PCR reaction was carried out in 50 µl

Table 1. Microbiological quality of sugarcane and coconut juice samples

Stall	Total Plate Count		Total Coliform Count		<i>Escherichia coli</i>		<i>Staphylococcus</i> spp.	
	Mean		Mean		Mean		Mean	
	(log CFU/ml)		(MPN/ml)		(MPN/ml)		(log CFU/ml)	
	Sugarcane	Coconut	Sugarcane	Coconut	Sugarcane	Coconut	Sugarcane	Coconut
A	2.49 ± 0.02 ^a	2.50 ± 0.05 ^a	93	150	240	93	2.62 ± 0.02 ^a	2.76 ± 0.02 ^a
B	2.63 ± 0.01 ^a	2.56 ± 0.01 ^a	>1100	>1100	240	460	2.28 ± 0.01 ^b	2.36 ± 0.01 ^b
C	2.32 ± 0.01 ^a	2.12 ± 0.01 ^b	>1100	43	240	<3.0	ND	ND

ND: Not Detected

Data are expressed as means ± standard deviation (n=3).

^{abc} values with different superscripts in the same column indicate significant difference (P<0.05).

PCR reaction mixture (2.5 U Taq DNA polymerase, 10 p moles each of the forward and reverse primers, 1X Taq buffer, 0.2 mM dNTP mix, 1.5 mM MgCl₂, DNA template and sterile distilled water) (1st Base, Singapore). PCR amplification was performed in a Thermal Cycler (Eppendorf AG 22331 Hamburg, Germany) under conditions such as heat denaturation at 94°C for 4 minutes, followed by 30 cycles of denaturation at 94°C for 1 minute; annealing at 59°C for 1 minute and extension at 72°C for 1 minute. This was followed by a final extension step at 72°C for 7 minutes and 4°C hold (Kinge *et al.*, 2008; Pathak *et al.*, 2013). Also, the purity of DNA were determined using Nanodrop Spectrophotometer (DeNovix, United State) at A_{260/280} and A_{260/230} (Pathak *et al.*, 2013). Vivantis Gel DNA Purification Kit was used to perform gel extraction purification.

16S rRNA sequencing

Purified PCR products were subjected for 16S rRNA fragment sequencing. The relative molecular sizes of the PCR products were compared against the sequences from the Gen Bank database, National Centre for Biotechnology Information (NCBI) using Basic Local Alignment Search Tool (BLAST) analysis program (Fattahi *et al.*, 2013).

Results and Discussion

The microbiological standard of beverages and preparation surfaces concerned were compared against Ministry of Health (MOH) Malaysia drinking water quality as well as World Health Organisation (WHO), U.S. Environmental Protection Agency (EPA) and Food and Drug Administration (FDA) drinking water regulations. Prior to any microbial

test, the pH of sugarcane juice were taken as it may contribute to microbial growth. The pH of sugarcane juice were recorded from stall A (pH 4.38), stall B (pH 5.35) and stall C (pH 4.67). These values are in the range of Oliveira *et al.* (2006) and Mahale *et al.* (2008) studies (pH 4.89). Although low pH value may have inhibitory effects to microbial contamination (Nonga *et al.*, 2014) and the survival of pathogenic bacteria in beverages, large groups of bacteria are able to grow at pH greater than 4 (Oliveira *et al.*, 2006).

Based on the distribution of bacteria from total plate counts of sugarcane juice, stall B showed the highest bacteria load at 2.63±0.01 log CFU/ml (P<0.05) compared to Stall A and C's sugarcane juice (Table 1). The detection of coliform contamination in juice samples clearly indicated that it does not fulfil WHO and EPA's standard where no coliform should be detected. All sugarcane juice samples recorded 240 MPN/ml for presumptive *Escherichia coli* counts (ECCs). Finding presumptive pathogenic *E. coli* species in beverages ready for consumption at all three stalls is generally viewed as an indication of faecal contamination (Lambrechts *et al.*, 2014).

Staphylococcus aureus had been reported in street-vended juice samples (Suneetha *et al.*, 2011). In this study, stall A sugarcane juice reported the highest staphylococci load (2.62±0.02 log CFU/ml) (Table 1). In contrast, staphylococci were not detected in *S. aureus* selective agar in stall C's sugarcane juice sample. This indicated better hygiene management of beverages preparation since human skin and mucous membrane are the natural carrier of *S. aureus* (Lambrechts *et al.*, 2014). Based on the coagulase test, none of the samples from stall A

Table 2. Bacterial load of associated food contact surfaces

Sample type / Stall	Total Plate Count (log CFU/ml)	Total Coliform Count (MPN/ml)	<i>Escherichia coli</i>		<i>Staphylococcus</i> spp.	
			MPN/ml	log CFU/cm ²	log CFU/ml	log CFU/cm ²
Left hand						
A	2.64 ± 0.04 ^{ab}	240	43	ND	<2.40	<2.40
B	2.96 ± 0.02 ^a	460	240	ND	2.53 ± 0.01	2.63 ± 0.01
C	<2.40	23	23	ND	ND	ND
Right hand						
A	2.69 ± 0.06 ^b	240	43	ND	<2.40	<2.40
B	2.90 ± 0.02 ^a	460	240	<2.40	2.61 ± 0.04	2.69 ± 0.04
C	<2.40	23	23	ND	ND	ND
Aprons						
A	<2.40	<3.0	<3.0	ND	<2.40	<2.40
B	3.77 ± 0.02 ^a	43	23	ND	3.08 ± 0.01	3.11 ± 0.01
C	1.87 ± 0.02 ^b	93	43	<2.40	ND	ND
Sugarcane juice extractors						
A	<2.40	<3.0	<3.0	ND	ND	ND
B	4.13 ± 0.01 ^a	460	93	<2.40	2.46 ± 0.05	2.44 ± 0.01
C	3.91 ± 0.01 ^a	240	240	2.79 ± 0.01	ND	ND
Coconut openers						
A	<2.40	<3.0	<3.0	ND	2.62 ± 0.02 ^a	<2.40
B	2.91 ± 0.01 ^a	<3.0	<3.0	ND	2.28 ± 0.01 ^b	2.50 ± 0.01
C	2.86 ± 0.02 ^b	<3.0	<3.0	ND	<2.40	ND

ND: Not Detected

Data are expressed as means ± standard deviation (n=3)

ab values with different superscripts in the same column indicate significant difference (P<0.05) for each type of food contact surfaces

and stall B sugarcane juice showed coagulation. The possible species on Baird-Parker agar but responded as negative-coagulase is *Staphylococcus epidermidis*.

For coconut water, Yong *et al.* (2009) claimed that the pH of fresh coconut water for consumption should fall within the range of 4.6–5.6. The present study showed the average pH of coconut water from stalls A, B and C were 4.80, 5.27 and 4.78 respectively which is compatible with the study. Coliform counts in coconut water ranged between 43 MPN/ml to >1000 MPN/ml (Table 1) which is also incompatible with WHO and EPA standard as no coliform should be present. The presumptive positive *E. coli* species detected in coconut water was non-pathogenic Enterobacteriaceae bacteria. For identification of *Staphylococcus*, stall A recorded the highest staphylococci bacteria load followed by stall B while stall C's samples did not show characteristic feature of staphylococci colony.

Pearson correlation showed that the average TPCs with presumptive *Staphylococcus aureus* counts (SACs) of sugarcane juice and coconut water, from all three selected vendors were highly correlated, $r=0.861$. It delineated that causal relationship exist between TPC and ECC of beverages as well as among TCC and SAC of beverages collected from all three stalls. *Staphylococcus* counts were detected in 60% (9/15) of the associated preparation surfaces and 26.67% (4/15) of *E. coli* counts were detected on the examined preparation surfaces using Sanita-kun direct stamping method. The linear correlation coefficient between the Baird-Parker agar

Staphylococcus aureus counts (SACs) and Sanita-kun *Staphylococcus aureus* counts (SSCs) method was $r=0.956$ which showed high correlation. Morita *et al.* (2003) and Park and Kim (2013) reported that the plate count and Sanita-kun film count correlation coefficient were $r=0.99$ and therefore Sanita-kun is an acceptable alternative to various agar medium.

Table 2 showed that there were no significant difference ($P>0.05$) in TPCs between both left and right hands of the street vendors. The TPCs of stall B handler's left and right hands recorded the highest bacteria load at 2.96 ± 0.02 and 2.90 ± 0.02 log CFU/ml respectively. Stall B's handler also recorded the highest *Staphylococcus* sp. count for sugarcane juice (2.63 ± 0.01 log CFU/ml) and coconut water (2.56 ± 0.01 log CFU/ml). The TPCs on both hands were compatible with Christison *et al.* (2008) who stated that the TPCs of handlers' hands were comparably higher than beverages. Likewise, similar trends were observed for stall A and stall C vendor's hands. It can be deduced that cross-contamination occurs where partial microbial load was transmitted from the preparation surface during handling process (Mahale *et al.*, 2008) and from handler's hands to the sugarcane juice and coconut water (Tan *et al.*, 2014).

Among all five types of preparation surfaces examined, sugarcane extractors revealed the highest TPCs (4.13 ± 0.01 and 3.91 ± 0.01 log CFU/ml) for stall B and stall C respectively (Table 2). Gilbert *et al.* (2000) suggested that several factors attributed to the prevalence of coliform on preparation surfaces i.e. the unhygienic practices of vendors, equipment

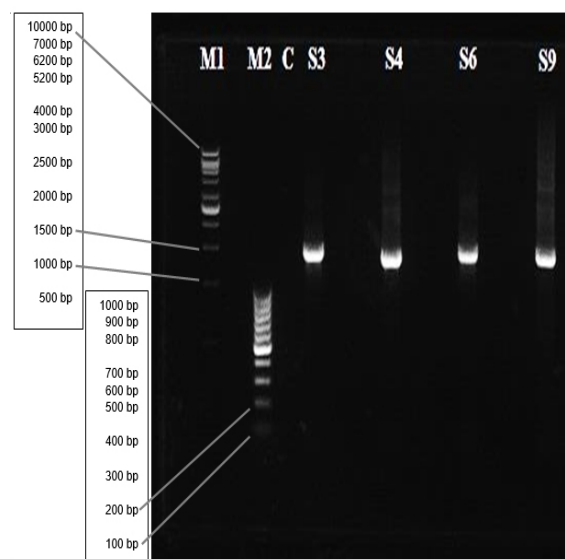
design (e.g. the uneven and ragged surface of the upper and lower pressing unit of sugarcane extractor that build-up food debris and microorganisms) and cleaning and sanitation procedures. Results from the present study showed that sugarcane juice extractor from stall C exhibited positive citrate test with the highest presumptive *E. coli* counts (240 MPN/ml, 2.79 ± 0.01 log CFU/cm²).

The microbial status of the coconut opener which is a knife used by street vendors is also shown in Table 2. The total coliform counts and presumptive *Escherichia coli* MPN test results were negative for all coconut opener samples analysed. The microbiological quality of street vendors' aprons with TPCs ranged from < 2.40 to 3.77 ± 0.02 log CFU/ml. There is a vast difference between the total microbial load of stall B vendor's apron (3.77 ± 0.02 log CFU/ml) compared with stall A and stall C (Table 2).

This study showed high bacterial load in beverages ranging from 2.12 ± 0.01 to 2.63 ± 0.01 log CFU/ml. The TPCs for preparation surfaces fluctuates and covers a wide range, i.e. from an acceptable range of <2.40 to 4.13 ± 0.01 log CFU/ml. This reflects the inadequate sanitary of the sugarcane juice, coconut water and utensils used (Oliveira et al. 2006). Results showed that different street vendors will significantly affect ($P < 0.05$) the presumptive *Staphylococcus aureus* load for each preparation surfaces. The staphylococci microbial load for left and right hands, sugarcane extractor and aprons using both BPA and Sanita-kun *S. aureus* direct stamping method were in the order of stall B > stall A > stall C. However, all preparation surfaces were tested as coagulase negative and eliminated the possibility of the presence of pathogenic *Staphylococcus aureus* species.

High surrounding temperature of street-vended beverages favours bacteria growth (Nonga et al. 2014). Furthermore, heavy vehicular traffic also contributes to high TPCs of street-vended stalls (Mugampoza et al., 2013) and are susceptible to contamination by dust-laden microorganisms. With regards to waste disposal, dumping of wastes on-site with piles of uncovered waste is another unhygienic source that causes further cross-contamination to the consumable goods (Nonga et al., 2014).

In some circumstances, both swabbing and dry culture medium methods have pros and cons. The direct stamping method using sheet medium can effectively pick up bacteria present at the surface examined. While for sterile swabs, the collection surface is notably smaller and if excess moisture is applied on the sampling surface, it can cause residual to remain on the tested surface. However, swab

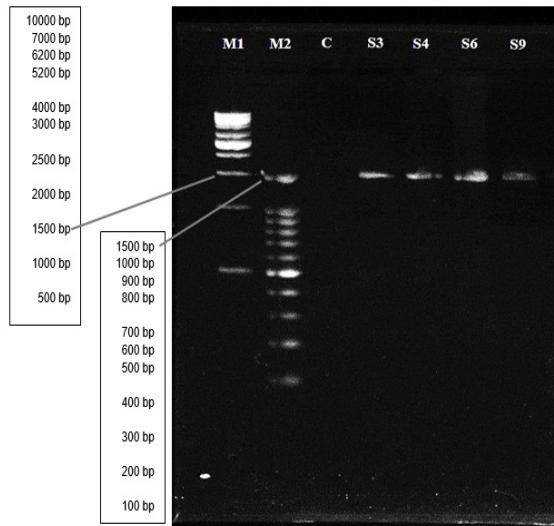


M1: 1 kb ladder; M2: 100 bp ladder; C: Negative control; S3: PCR product from stall A sugarcane juice; S4: PCR product from stall B sugarcane juice; S6: PCR product from stall C sugarcane juice extractor; S9: Stall C sugarcane juice

Figure 1. PCR products visualised under UV illumination on 1.0% agarose gel

samples are best suited for use on irregular surfaces such as sugarcane extractor in this study while flat sheet medium is less preferred. The Sanita-kun *E. coli* and coliform chromogenic medium were metabolised by the growing microorganism. The coloured colonies were easily distinguished between *E. coli* and other coliform colonies because the dry medium was hydrolysed by galactosidase from coliforms and will produce X-Gal visible blue dye upon coliform growth. Meanwhile, salmon-glucuronic acid composed in the medium was hydrolysed by glucuronidase from *E. coli* to produce a red-purple dye (Ushiyama and Iwasaki, 2010). The Sanita-kun *Staphylococcus aureus* dry culture medium contains chromogenic agent and a specific fluorescence enzyme substrate (Waku et al. 2013). A buffering agent is also present to adjust and maintain the pH at approximately 7.0 to favour the growth of bacteria. As bacteria grow, the blue and black colour colonies will develop. This eases the direct enumeration of *S. aureus* compared with enumeration on Baird-Parker agar where *S. aureus* was distinguished among black colonies by identifying opaque ring clear zones (Waku et al., 2013).

DNA extractions were conducted on *E. coli* strains isolated from sugarcane juice of all stalls and sugarcane extractor from stall C as only replicates from these four isolates were identified as pathogenic *E. coli* through IMViC test. Replicates of extracted



M1: 1 kb ladder; M2: 100 bp ladder; C: Negative control; S3: PCR product from stall A sugarcane juice; S4: PCR product from stall B sugarcane juice; S6: PCR product from stall C sugarcane juice extractor; S9: Stall C sugarcane juice

Figure 2. Purified PCR products visualised under UV illumination on 1.0% agarose gel

DNA samples were subjected to gel electrophoresis. All DNA samples migrated from the cathode towards the anode, showing bands of DNA fragments at respective wells while elution without DNA samples was set as the negative control. The rate of travel of DNA towards the positive pole of agarose gel varies inversely with its molecular weight. This is explained by the large size of DNA fragments entangled in the gel matrix and which migrated slowly (Magray *et al.*, 2011). Since the initial DNA extracts often contains RNA and protein, it caused smearing of bands and may interfere with the extracted DNA and need to be purified to retain only targeted DNA fragment. DNA products of all samples were subjected to PCR to multiply the copies of DNA from a single strand of DNA extracted. Through PCR, the targeted DNA was amplified to enable the selection of *E. coli*. Universal primers were used for the amplification of 16S rRNA gene fragment (Magray *et al.*, 2011).

The negative control in the above agarose gel for gel electrophoresis of PCR product received the PCR mixture containing no DNA template (Fattahi *et al.*, 2013). High intensity of PCR products in Figure 1 indicates that selective amplification of *E. coli* was successfully attained using universal primers during annealing at 72°C with high concentration of DNA fragments obtained (Sabat *et al.*, 2000). From the gel electrophoresis of PCR products, only PCR products with high intensity and clear band under UV illumination (S3, S4, S6 and S9) from each type of

Table 3. Similarity of 16S rRNA gene sequences of samples based on the NCBI database using BLAST analysis

Isolates	Similarity from BLAST	Identity	Accession
S3	<i>Escherichia coli</i> strain RM9387	99%	CP009104.1
S4	<i>Escherichia coli</i> strain RM9387	99%	CP009104.1
S6	<i>Escherichia coli</i> strain c164	99%	JQ781646.1
S9	<i>Escherichia fergusonii</i> strain E10	99%	KJ626264.1

Note: Isolate S3: Stall A sugarcane juice
Isolate S4: Stall B sugarcane juice
Isolate S6: Stall C sugarcane juice
Isolate S9: Stall C sugarcane juice extractor

sample were selected for PCR purification.

Purification step was performed with the aid of Vivantis Gel DNA Recovery Kit for rapid purification of residual reagents during PCR reaction and elimination of the unspecific DNAs that caused smearing of bands observed in S3, S4, S6 and S9. The clear and single sharp purified bands of 1500 bp (Figure 2) represents good quality DNA and these enable the 16S rRNA fragments (Fattahi *et al.*, 2013) of samples from sugarcane juices and sugarcane juice extractor to be subjected to DNA sequencing to identify strains of *Escherichia coli*.

The sequencing results were obtained from MyTACG Bioscience Enterprise. All four isolates were aligned using nucleotide BLAST to ascertain the sequence similarity against the NCBI database. Based on the results obtained, the genera with highest occurring frequency are *Escherichia* spp. in all four samples (Table 3).

Escherichia coli strain RM9387 was previously linked to contaminated milk and is commonly isolated from cattle faeces (Yan *et al.*, 2015). *E. coli* RM9387 were also associated with recreational and municipal drinking water outbreaks (Kaper *et al.*, 2004). *Escherichia fergusonii*, isolated from stall C's sugarcane juice extractor is the closest related species to *Escherichia coli* and both has been reported as pathogenic species in Enterobacteriaceae. *Escherichia fergusonii* and *Escherichia coli* can be isolated from faeces and water samples (Maheux *et al.*, 2014). *Escherichia fergusonii* had recently been shown to cause disease in animals and humans (Forgetta *et al.*, 2012) as it can influence the intestinal function of both poultry and mammals (Hariharan *et al.*, 2007). The presence of *E. coli* on sugarcane plant

could be due to contamination from animals' or pests' faeces (Duncan and Colmer, 1964; Heaton and Jones, 2008) instead of cross-contamination from handlers as *E. coli* were not detected on handlers' hands or aprons. Furthermore, when transporting the sugarcane plant, the exposed ends of sugarcane plant can be a favourable environment for the multiplication of *E. coli*.

Conclusion

Escherichia coli and *Staphylococcus* spp. were present in juice samples and some preparation surfaces. The highest total plate count was recorded in both sugarcane juice and coconut water from stall B. The detection of *E. coli* strain RM9387 in stalls A and B sugarcane juice, *E. coli* strain c164 in stall C's sugarcane juice sample and *E. fergusonii* strain E10 in stall C sugarcane juice extractor showed that contamination of street-vended beverages or preparation surfaces may present health risk and leads to foodborne illnesses.

Street-vended beverages are prepared for immediate consumption and are usually untreated. The results of this study demonstrated that beverages extracted from fresh fruits and associated preparation surfaces are identified as potential sources of bacterial pathogens. The isolated pathogenic *E. coli* strains may present health risk and leads to foodborne illnesses. Accordingly, adoption of strict hygienic measures should be followed during the preparation of street-vended beverages. Regular monitoring of the quality of street-vended beverages is vital to avoid foodborne illnesses. The public need to have greater awareness with respect to food safety while the authority should enforce regulations by making basic Food Handling Course compulsory to food handlers and further training as required by the relevant authority. Associated preparation surfaces such as sugarcane extractor and coconut opener are potential sources of contamination and should be cleaned and sanitised regularly.

References

- Al Mamun, M., Rahman, S. M. M. and Turin, T. C. 2013. Microbiological quality of selected street food items vended by school-based street food vendors in Dhaka, Bangladesh. *International Journal of Food Microbiology* 166(3): 413-418.
- Bagci, U. and Temiz, A. 2011. Microbiological quality of fresh-squeezed orange juice and efficacy of fruit surface decontamination methods in microbiological quality. *Journal of Food Protection* 74(8): 1238-1244.
- Christison, C. A., Lindsay, D. and von Holy, A. 2007. Cleaning and handling implements as potential reservoirs for bacterial contamination of some ready-to-eat foods in retail delicatessen environments. *Journal of Food Protection* 70(12): 2878-2883.
- Duncan, C. L. and Colmer, A. R. 1964. Coliforms associated with sugarcane plants and juices. *Applied Microbiology* 12(2): 173-177.
- Fattahi, F., Mirvaghefi, A., Farahmand, H., Rafiee, G. and Abdollahi, A. 2013. Development of 16S rRNA targeted PCR method for the detection of *Escherichia coli* in rainbow trout (*Oncorhynchus mykiss*). *Iranian Journal of Pathology* 8(1): 36-44.
- Forgetta, V., Rempel, H., Malouin, F., Vaillancourt, R., Topp, E., Dewar, K. and Diarra, M. S. 2012. Pathogenic and multidrug-resistant *Escherichia fergusonii* from broiler chicken. *Poultry Science* 91(2): 512-525.
- Gilbert, R. J., de Louvois, J., Donovan, T., Little, C., Nye, K., Ribeiro, C. D., Richards, S., Roberts, D. and Bolton, F. J. 2000. Guidelines for the microbiological quality of some ready-to-eat foods sampled at the point of sale. PHLS Advisory Committee for Food and Dairy Products. *Communicable Disease and Public Health / PHLS* 3(3): 163-167.
- Hariharan, H., López, A., Conboy, G., Coles, M. and Muirhead, T. 2007. Isolation of *Escherichia fergusonii* from the faeces and internal organs of a goat with diarrhea. *Canadian Veterinary Journal* 48(6): 630.
- Harrigan, W. F. 1998. *Laboratory Methods in Food Microbiology*. 3rd ed. California, USA: Academic Press.
- Heaton, J. C. and Jones, K. 2008. Microbial contamination of fruit and vegetables and the behaviour of enteropathogens in the phyllosphere: a review. *Journal of Applied Microbiology* 104(3): 613-626.
- Kaper, J. B., Nataro, J. P. and Mobley, H. L. 2004. Pathogenic *Escherichia coli*. *Nature Reviews Microbiology* 2(2): 123-140.
- Kateete, D. P., Kimani, C. N., Katabazi, F. A., Okeng, A., Okee, M. S., Nanteza, A., Joloba, M. L. and Najjuka, F. C. 2010. Identification of *Staphylococcus aureus*: DNase and mannitol salt agar improve the efficiency of the tube coagulase test. *Annals of Clinical Microbiology and Antimicrobials* 9: 23. <http://doi.org/10.1186/1476-0711-9-23>
- Kazemi, M. and Hajizadeh, H. S. 2012. An efficient protocol for genomic DNA extraction from *Alcea rosea*. *Journal of Agricultural Technology* 8(1): 319-326.
- Kinge, C. N. W., Mbewe, M. and Sithebe, N. P. 2008. Detection of bacterial pathogens in river water using multiplex-PCR. In Hernandez-Rodriguez, P. (Ed.). *Polymerase Chain Reaction*, p. 531-554. Rijeka: InTech.
- Lambrechts, A., Human, I., Doughari, J. and Lues, J. F. R. 2014. Bacterial contamination of the hands of food handlers as indicator of hand washing efficacy in some convenient food industries. *Pakistan Journal of Medical Sciences* 30(4): 755-758.
- Magray, M. S. U. D., Kumar, A., Rawat, A. K. and Srivastava, S. 2011. Identification of *Escherichia*

- coli* through analysis of 16S rRNA and 16S-23S rRNA internal transcribed spacer region sequences. *Bioinformatics* 6(10): 370–371.
- Mahale, D. P., Khade, R. G. and Vaidya, V. K. 2008. Microbiological analysis of street vended fruit juices from Mumbai city, India. *Internet Journal of Food Safety* 10: 31–34.
- Maheux, A. F., Boudreau, D. K., Bergeron, M. G. and Rodriguez, M. J. 2014. Characterization of *Escherichia fergusonii* and *Escherichia albertii* isolated from water. *Journal of Applied Microbiology* 117(2): 597–609.
- Mallmann, W. L. and Darby, C. W. 1941. Uses of a lauryl sulfate tryptose broth for the detection of coliform organisms. *American Journal of Public Health and the Nation's Health* 31(2): 127–134.
- Morita, H., Ushiyama, M., Aoyama, S. and Iwasaki, M. 2003. Sensitivity and specificity of the Sanita-Kun aerobic count: Internal validation and independent laboratory study. *Journal of AOAC International* 86(2): 355–366.
- Mugampoza, D., Byarugaba, G. W. B., Nyonyintono, A., Nakitto, P., Campus, B. and Kingdom, U. 2013. Occurrence of *Escherichia coli* and *Salmonella* spp. in street-vended foods and general hygienic and trading practices in Nakawa Division, Uganda. *American Journal of Food and Nutrition* 3: 167–175.
- Mukhopadhyay, M., Majumdar, M. and Basu, P. 2011. Microbial contamination of street vended fruit juices in kolkata city. *Internet Journal of Food Safety* 13: 1–5.
- Nonga, H. E., Simforian, E. A. and Ndabikunze, B. K. 2014. Assessment of physicochemical characteristics and hygienic practices along the value chain of raw fruit juice vended in Dar es Salaam City. *Tanzania Journal of Health Research* 16(4): 1–12.
- Oliveira, A. C. G., Seixas, A. S. S., Sousa, C. P. and Souza, C. W. O. 2006. Microbiological evaluation of sugarcane juice sold at street stands and juice handling conditions in São Carlos, São Paulo, Brazil. *Cadernos de Saude Publica / Ministerio Da Saude, Fundacao Oswaldo Cruz, Escola Nacional de Saude Publica* 22(5): 1111–1114.
- Park, J. and Kim, M. 2013. Comparison of dry medium culture plates for mesophilic aerobic bacteria in milk, ice cream, ham, and codfish fillet products. *Preventive Nutrition and Food Science* 18(4): 269–72.
- Pathak, A., Dwivedi, M., Laddha, N., Begum, R. and Joshi, A. 2013. DNA isolation from fresh leaf tissue of *Tylophora indica* and *Bacopa monnieri*. *Environmental and Experimental Biology* 11: 69–71.
- Sabat, G., Rose, P. and Hickey, W. J. 2000. Selective and sensitive method for PCR amplification of *Escherichia coli* 16S rRNA genes in soil. *Applied and Environmental Microbiology* 66(2): 844–849.
- Sharifa Ezat, W. P., Netty, D. and Sangaran, G. 2013. Paper review of factors, surveillance and burden of food borne disease outbreak in Malaysia. *Malaysian Journal of Public Health Medicine* 13(2): 1–7.
- Suneetha, C., Manjula, K. and Depur, B. 2011. Quality assessment of street foods in Tirumala. *Asian Journal of Experimental Biological Sciences* 2(2): 207–211.
- Tambekar, D.H., Jaiswal, V.J., Dhanorkar, D.V, Gulhane, P.B. and Dudhane, M.N. 2009. Microbial Quality and safety of street vended fruit juices : A case study of Amravati city. *Internet Journal of Food Safety* 10: 72–76.
- Tan, S. L., Lee, H. Y. and Mahyudin, N. A. 2014. Antimicrobial resistance of *Escherichia coli* and *Staphylococcus aureus* isolated from food handler's hands. *Food Control* 44: 203–207.
- Ushiyama, M. and Iwasaki, M. 2010. Evaluation of Sanita-kun *E. coli* and coliform sheet medium for the enumeration of total coliforms and *E. coli*. *Journal of AOAC International* 93(1): 163–183.
- Waku, S., Miyagi, M., Saito, R., Ueki, T., Baba, T. and Konoshita, M. 2013. Microorganism culture sheet US 20130084624 A1. Retrieved on February 11, 2016 from Google Patents Website: <http://www.google.com/patents/US20130084624>
- World Health Organization (WHO) 1996. Essential safety requirements for street-vended foods. Retrieved on March 10, 2016 from WHO Website: <http://apps.who.int/iris/handle/10665/63265>
- World Health Organization (WHO) 2003. Emerging issues in water and infectious disease. Geneva, Switzerland: WHO Press, World Health Organization. Retrieved on March 10, 2016 from WHO Website: http://www.who.int/water_sanitation_health/emerging/emerging.pdf.
- Yan, X., Fratamico, P. M., Bono, J. L., Baranzoni, G. M. and Chen, C. Y. 2015. Genome sequencing and comparative genomics provides insights on the evolutionary dynamics and pathogenic potential of different H-serotypes of Shiga toxin-producing *Escherichia coli* O104. *BMC Microbiology* 15(1): 83.
- Yong, J. W. H., Ge, L., Ng, Y. F. and Tan, S. N. 2009. The chemical composition and biological properties of coconut (*Cocos nucifera* L.) water. *Molecules* 14(2): 5144–5164.