



Article

Thermal conductivity and molecular heat transport of nanofluids

Dolatabadi, Nader, Rahmani, Ramin, Rahnejat, Homer and Garner, Colin P.

Available at <http://clock.uclan.ac.uk/32089/>

Dolatabadi, Nader, Rahmani, Ramin, Rahnejat, Homer ORCID: 0000-0003-2257-7102 and Garner, Colin P. (2019) Thermal conductivity and molecular heat transport of nanofluids. RSC Advances, 9 (5). pp. 2516-2524.

It is advisable to refer to the publisher's version if you intend to cite from the work.
<http://dx.doi.org/10.1039/c8ra08987f>

For more information about UCLan's research in this area go to <http://www.uclan.ac.uk/researchgroups/> and search for <name of research Group>.

For information about Research generally at UCLan please go to <http://www.uclan.ac.uk/research/>

All outputs in CLoK are protected by Intellectual Property Rights law, including Copyright law. Copyright, IPR and Moral Rights for the works on this site are retained by the individual authors and/or other copyright owners. Terms and conditions for use of this material are defined in the [policies](#) page.

Cite this: *RSC Adv.*, 2019, 9, 2516

Thermal conductivity and molecular heat transport of nanofluids

Nader Dolatabadi, * Ramin Rahmani, Homer Rahnejat and Colin P. Garner

Fluid media such as water and ethylene glycol are usually quite poor conductors of heat. Nanoparticles can improve the thermal properties of fluids in a remarkable manner. Despite a plethora of experimental and theoretical studies, the underlying physics of heat transport in nanofluids is not yet well understood. Furthermore, the link between nanoscale energy transport and bulk properties of nanofluids is not fully established. This paper presents a thermal conductivity model, encapsulating solid–liquid interfacial thermal resistance, particle shape factor and the variation of thermal conductivity across a physisorbed fluidic layer on a nanoparticle surface. The developed model for thermal conductivity integrates the interfacial Kapitza resistance, the characteristics of a nanolayer, convective diffusion and surface energy with capillary condensation. In addition, the thickness of the nanolayer is predicted using the Brunauer–Emmett–Teller (BET) isotherms and micro/nano-menisci generated pressures of condensation. Such a comprehensive model for thermal conductivity of nanoparticles and systematic study has not hitherto been reported in the literature. The thermal conductivity model is evaluated using experimental data available in open literature.

Received 30th October 2018

Accepted 9th January 2019

DOI: 10.1039/c8ra08987f

rsc.li/rsc-advances

1. Introduction

Nanoparticles have received growing attention for medical, environmental and electronic applications in the past decade.^{1–5} Nanofluids are a propitious choice for industrial cooling systems and powerplant heat exchangers owing to their improved thermal performance as efficient cooling agents.^{6,7} Improved fuel economy is also envisaged through the application of nanoparticles as lubricant additives in, for example, automotive powertrains.⁸

At the current state of the art, nanoparticles are dispersed in physically known fluid carriers such as ethylene glycol (EG), mineral oil (M-oil), poly-alpha-olefin (PAO) and water (H₂O).^{8–10} Metallic and non-metallic nanoparticles have thermal conductivities of several orders of magnitude greater than the base fluid. Even a relatively small volumetric fraction of solid nanoparticles (<2%) dispersed in a fluid carrier can noticeably improve its bulk thermal conductivity.¹¹ Maxwell¹² studied the effective thermal conductivity of nanofluids using the thermal diffusion model for two-phase solid–liquid dilute dispersions. Various semi-empirical and theoretical models have been developed since the work of Maxwell to account for particle size, shape, volumetric concentration, clustering, monolayer surface adsorption, temperature, pH and zeta potential.^{13–17} Zeta potential determines the surface electric

charge of particles and it can be adjusted using pH properties. Zeta potential is utilised to evaluate the electrostatic forces in nanofluids. The interplay between van der Waals and electrostatic forces is responsible for the stability of nanofluid and agglomeration of the particles. The thermal conductivity enhancement of the nanofluid depends on these forces.^{18–21} The Derjaguin–Landau–Verwey–Overbeek (DLVO) theory is widely utilised for stability studies. The thermal conductivity models attempt to relate the bulk properties of the two phases and predict the effective thermal conductivity of a nanofluid for a known range of materials. Only a few studies have targeted the underlying physics of the heat transport at molecular scale in nanofluids. Wang *et al.*²² utilised Langmuir's monolayer adsorption theory²³ to predict the diameter of fluid molecules adsorbed to the surface of nanoparticles. They considered the nanoparticle size and clustering using a fractal model. Their model excludes the adsorption of additional molecular layers. Brunauer *et al.*²⁴ showed that extra molecular layers would form on solid surfaces, based upon Arrhenius adsorption theory.²⁵ Jang and Choi²⁶ pioneered consideration of energy transport modes at molecular scale. They studied four transport modes, encapsulating fluid intermolecular collisions, thermal diffusion of nanoparticles, direct collision of nanoparticles (Brownian motion) and fluid–nanoparticle interactions. They showed analytically that their model conformed to the experimental data for three layers of molecules adsorbed to the surface of nanoparticles regardless of the progressive adsorption–desorption phenomenon. Their model included the thermal resistance of solid–liquid interface,

Wolfson School of Mechanical, Electrical and Manufacturing Engineering, Loughborough University, Leicestershire, LE11 3TU, UK. E-mail: N.Dolatabadi@lboro.ac.uk



whilst neglecting the variation of thermal conductivity across the adsorbed nanolayer. Although their model accounted for convective thermal diffusion through fluid flow past nanoparticles, they utilised an empirical coefficient to compensate for the deviations of their theoretical model from the measured experimental data. The adsorption mechanism and empirical parameters should be explained through fundamental physics for a better understanding of the underlying heat transfer of nanofluids.

The underlying physics of molecular heat transport phenomena is fundamental to the better understanding of the bulk thermal properties of nanofluids. This paper makes use of energy transport formulation of Jang and Choi,²⁶ integrating the effective thermal conductivity of nanofluids to the physical chemistry of adsorption at the molecular scale. A multilayer adsorption model is established, based upon the Brunauer–Emmett–Teller (BET) theory. The activation energy of adsorption is predicted using micro/nano-menisci forces. The proposed model incorporates the variation of thermal conductivity across the adsorbed nanolayer, associating the empirical coefficient of convective diffusion to the shape factor of nanoparticles. This modified thermal conductivity model is verified using experimental data from open literature. A parametric study is also carried out to investigate the influences of interfacial thermal resistance, convective diffusion and surface energy upon the bulk thermal conductivity of nanofluids.

2. Methodology

In nanofluid dynamics, particles are subjected to various intermolecular forces (Fig. 1), some of which are regarded as negligible due to the minute size of the particles.²⁷ The dominant forces are due to molecular interactions between molecules of the fluid and the nanoparticles, and the inertia of the adsorbed fluid layer. The direct interaction of nanoparticles, known as Brownian motion, is considered as negligible in dilute nanofluids.^{12,26} The molecular momenta of fluid–nanoparticle collisions affect the energy transport and thermal diffusion at nanoscale and thermal conductivity at microscale.

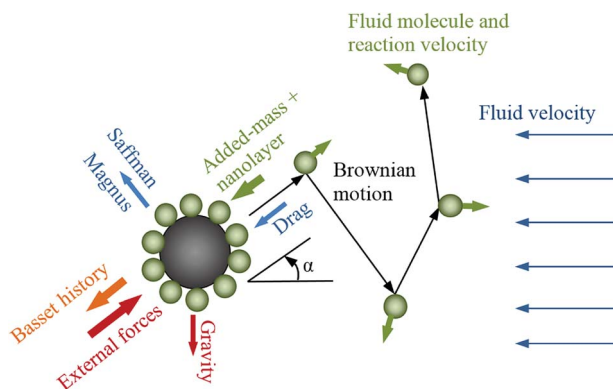


Fig. 1 Schematic of nanoparticle motion and applied forces.

2.1. Effective thermal conductivity of nanofluid

Jang and Choi's heat transport theory²⁶ is adopted to describe the effective thermal conductivity of nanofluids, k_{eff} . Jang and Choi assumed that the Reynolds number, Re , for nanoparticles is greater than unity and the Prandtl number, Pr , is approximately 10. Therefore, the Nusselt number for the flow past spheres can be simplified to: $Nu \sim Re^2 Pr^2$. Nanoparticles can experience a Reynolds number of noticeably smaller than unity due to their diminutive size. Whitaker's formulation²⁸ for the Nusselt number accurately predicts the coefficient of convective heat, h , for $Re \leq 50$ as:

$$h = \frac{k_{\text{bf}}}{d_n} [2 + 0.4Re^{1/2} + 0.06Re^{2/3}] Pr^{0.4} \left(\frac{\eta_\infty}{\eta_s}\right)^{1/4} \quad (1)$$

where, k_{bf} is the thermal conductivity of the base fluid. d_n , η_∞ and η_s are diameters of the nanoparticle including the thickness of any adsorbed nanolayer, dynamic viscosity of the bulk fluid and that of the fluid in the vicinity of nanoparticle surface. Whitaker²⁸ suggested that the dynamic viscosity ratio, η_∞/η_s , is between 1.0 and 3.2 for the flow past a single sphere. Substituting eqn (1) into Jang and Choi's heat transport model,²⁶ the effective thermal conductivity becomes:

$$\frac{k_{\text{eff}}}{k_{\text{bf}}} = (1 - \phi) + \frac{k_{\text{pe}}}{k_{\text{bf}}} \phi + C_1 \frac{n_1 d_{\text{bf}}}{d_n} [2 + 0.4Re^{1/2} + 0.06Re^{2/3}] Pr^{-0.6} \left(\frac{\eta_\infty}{\eta_s}\right)^{1/4} \phi \quad (2)$$

where, k_{pe} is the effective thermal conductivity of nanoparticles. ϕ , n_1 and d_{bf} are the volumetric concentration of nanoparticles, number of adsorbed molecular layers on the surface of the particles and the average diameter of the base fluid molecules respectively. The constant C_1 was determined arbitrarily by Jang and Choi²⁶ in order to compensate for any deviations of their theoretical predictions from the measured thermal conductivity. However, coefficient C_1 is correlated to the nanoparticle's shape factor in this paper in Section 2.4. Reynolds, Re , and Prandtl, Pr , numbers are described as:

$$Re = \frac{\rho_{\text{bf}} \bar{C}_{\text{RM}} d_n}{\eta}, Pr = \frac{\eta c_p}{k_{\text{bf}}} \quad (3)$$

respectively, where, ρ_{bf} , η and c_p are density, dynamic viscosity and the specific heat of the base fluid at constant pressure. The random average velocity of nanoparticles, \bar{C}_{RM} is determined by Einstein's diffusion coefficient, D_o ²⁹ and the mean free path of the base fluid's molecules, λ_{bf} as:

$$\bar{C}_{\text{RM}} = \frac{D_o}{\lambda_{\text{bf}}} \quad (4)$$

where, $D_o = k_B T / 3\pi\eta d_n$ and $\lambda_{\text{bf}} = 4M / \sqrt{2}\pi d_{\text{bf}}^2 \rho_{\text{bf}} N_A$. In these relationships, k_B and T are the Boltzmann constant and the absolute temperature of the base fluid. Parameters M and N_A are the molar mass of base fluid molecules and Avogadro constant. The adsorption phenomenon leading to the formation of nanolayers, where n_1 is the number of layers, the equivalent thermal conductivity of nanoparticle after dispersion, k_{pe} , and the shape factor, C_1 , are described in Sections 2.2 to 2.4.



2.2. Adsorption process of fluid nanolayer

Jang and Choi²⁶ assumed that three layers of molecules are always present (*i.e.* $n_1 = 3$ in eqn (2)) and the thermal conductivity of the adsorbed layers is the same as that of the nanoparticle itself. The number of molecular stacks in the nanolayer is physically imposed by the adsorption process. Fig. 2 shows how the molecular coverage might differ from Jang and Choi's model²⁶ due to the progressive adsorption-desorption process. This is a contribution of the current analysis. The thermal conductivity across the nanolayer varies with the bonding strength between the neighbouring layers (Fig. 3).

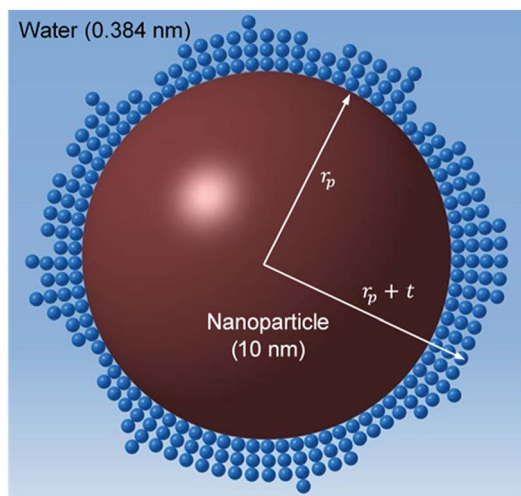


Fig. 2 Multi-layer molecular stacking due to adsorption of fluid molecules on the nanoparticle surface.

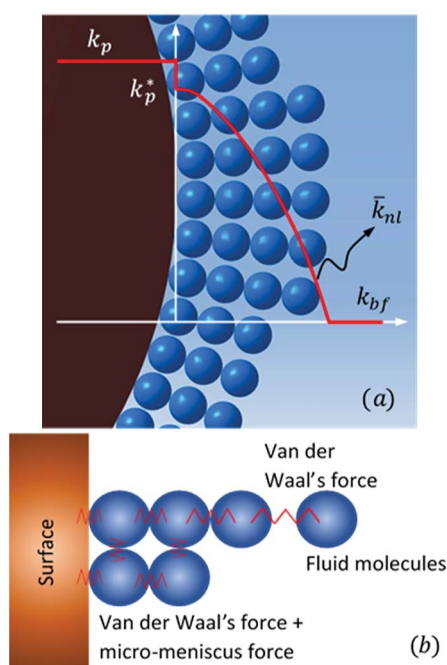


Fig. 3 (a) Variation of thermal conductivity at the interface and across the nanolayer thickness, and (b) diminution of surface energy and intermolecular bonding with distance.

Fluid molecules collide with the nanoparticle surface at high frequency due to long range van der Waals forces despite their weak interaction energy (*i.e.* ~ 0.01 – 0.1 eV). Some of these molecules bounce off, whilst the remaining oscillate and shift their positions prior to reaching equilibrium (*i.e.* physisorption). The enthalpy of chemisorption is a few orders of magnitude greater than physisorption (*i.e.* ~ 1 – 10 eV).³⁰ The energy barrier between physisorption and chemisorption is large for stable crystalline nanoparticles (*e.g.* Al_2O_3 and CuO), and particles are assumed to be chemically inert during the formation of nanolayers.^{30,31} Arrhenius theory determines the rate of molecular collisions, k_r , leading to adsorption²⁵ as:

$$k_r = Ae^{-\frac{E_a}{k_B T}} \quad (5)$$

where coefficient A is the total number of collisions with the nanoparticle surface and E_a is the activation energy of adsorption. The enthalpy of adsorption varies with surface coverage due to the interaction of neighbouring adsorbate molecules and the growth of the nanolayer. Brunauer–Emmett–Teller²⁴ adopted Langmuir's theory²³ and considered the initial monolayer as the substrate for the adsorption of more molecular layers. The growth of nanolayer continues until the surface energy becomes comparable to that of the Lifshitz theory for free fluid molecules, and adsorption-desorption process progressively continues. The molecular volume of nanolayer, v , can be interpreted as the average thickness of the nanolayer, t , provided that the molecular volume of the base monolayer, v_m , is known, based on the BET (Brunauer–Emmett–Teller) theory²⁴ as:

$$t = \frac{v}{v_m} d_{\text{bf}} = n_1 d_{\text{bf}} = \frac{czd_{\text{bf}}}{(1-z)[1-(1-c)z]}, z = \frac{p}{p^*} \quad (6)$$

where, pressures p and p^* indicate the equilibrium pressure of adsorbates at the adsorption temperature and the pressure of the bulk liquid above the last layer of adsorbate respectively. The latter is also known as the saturation pressure of adsorbate at the temperature of adsorption. Parameter c is the reaction rate ratio of adsorption to desorption for the last monolayer and is quantified through use of the reaction enthalpy, $\Delta H^{\ominus 31}$ as:

$$c = \frac{k_{r, \text{ads.}}}{k_{r, \text{des.}}} = e^{(\Delta_{\text{ads.}} H^{\ominus} - \Delta_{\text{cond.}} H^{\ominus}) / k_B T} \quad (7)$$

The constant c is well in excess of unity.²⁴ The thickness of nanolayer depends on pressure, surface energy, and temperature of adsorption. The diameter of fluid molecules is considered to be about two orders of magnitude smaller than that of the nanoparticles. The surface of a single nanoparticle and particle clusters consist of smooth, shallow cavities suitable for capillary condensation.³⁰ For hydrophilic (or oleophilic) surfaces, the physisorbed fluid molecules form a coherent layer of fluid. The solid surface interacts with the molecular layers of fluid through three forms of forces: (i) van der Waal's forces (physisorption), (ii) electrostatic double layer forces, and (iii) solvation forces.^{32–34} These forces vary in the range of a few pN at nanometre separation distances.^{34,35} Solvation forces are



present in narrow conjunctions between solid ultra-smooth barriers. The effect of electrostatic double layer forces is negligible in nonpolar fluids. In polar fluids, this repulsive force and van der Waals attractive force interplay. Thus, capillary condensation initiates through physisorption and a coherent nanolayer of fluid forms due to surface free energy (micro/nanomenisci forces). Al-Samieh and Rahnejat³² showed that forces of menisci are dominant at the scale of a few molecular layers of fluid contiguous to contacting surfaces. The BET isotherm pressure can be evaluated using Kelvin's equation for capillary condensation:^{34,36,37}

$$z = \frac{p}{p^*} = e^{-\frac{\gamma v}{r_c k_B T}} \quad (8)$$

where, γ is the surface energy of liquid and v is the volume of liquid layer. The mean radius of curvature of meniscus, r_c , is a geometrical property of cavity and is given by:

$$\frac{1}{r_c} = \frac{1}{2} \left(\frac{1}{r_1} + \frac{1}{r_2} \right) \quad (9)$$

where, $r_1 = r_2 = r_c$ for a hemispherical geometry.

2.3. Equivalent thermal conductivity of dispersed nanoparticles

The equivalent thermal conductivity of nanoparticle dispersion is the combined thermal conductivity of nanoparticles and their contiguous nanolayers. A sudden jump in thermal conductivity is expected at the solid–fluid interface due to the Kapitza thermal resistance.^{38–40} Khalatnikov³⁹ showed the dependence of Kapitza resistance, R_k on temperature, pressure, structural stiffness and surface properties. This theory incorporates the reflection and transmission of phonons through lattice vibrations in crystalline structures. Transmission of phonons depends on three lattice waves: longitudinal, transverse and surface Rayleigh waves. The Kapitza resistance is:^{38–40}

$$R_k = \frac{15\bar{h}^3 \rho_s c_t^3}{16\pi^5 k_B^4 \rho_{bf} c_{bf} F(c_t/c_s) T^3} \quad (10)$$

where, \bar{h} , ρ_s , c_l , c_t and c_{bf} are the reduced Planck constant, density of solid, longitudinal speed of sound in solid, transverse speed of sound in solid, and speed of sound in the base fluid respectively. Function, F , usually varies between 1.5 and 2.0. Kapitza thermal resistance, R_k , varies between 10^{-8} and 10^{-2} ($\text{m}^2 \text{K W}^{-1}$) for various interfaces and it ranges from 0.2×10^{-8} to 5.0×10^{-8} ($\text{m}^2 \text{K W}^{-1}$) for hydrophilic solid–water interfaces.^{41,42} The thermal conductivity of nanoparticles after dispersion in fluid, k_p^* , is evaluated using the Kapitza resistance, R_k , thermal conductivity before dispersion, k_p , and the equivalent radius of nanoparticle, r_p . Eqn (11) describes the abrupt jump in the thermal conductivity associated with interfacial thermal resistance (as shown in Fig. 3a).

$$k_p^* = \frac{2r_p}{R_k + \frac{2r_p}{k_p}} \quad (11)$$

The surface area, S , and volume, V , of a nanoparticle can be associated with the radius, r_p , of an equivalent sphere with volume, V_{eq} , and surface area, S_{eq} through geometrical relationship: $r_p = 3V S^{-1}$. The thickness of the nanolayer, t , can be determined using the BET isotherms (eqn (6)). Considering k_{nl} as the thermal conductivity of the nanolayer with a thickness ratio $\beta_r = t/r_p$, then it can be established that the nanolayer thermal conductivity ratio becomes: $\gamma_r = k_{nl}/k_p^*$. The equivalent thermal conductivity of the dispersed nanoparticles, k_{pe} is determined as:⁴³

$$k_{pe} = \frac{[2(1 - \gamma_r) + (1 + \beta_r)^3(1 + 2\gamma_r)]\gamma_r}{-(1 - \gamma_r) + (1 + \beta_r)^3(1 + 2\gamma_r)} k_p^* \quad (12)$$

Jang and Choi²⁶ assumed the same thermal conductivity for the nanolayer and nanoparticle. Thermal diffusion is related to the molecular momenta of the fluid. The internal bonding forces decay exponentially to those described by the Lifshitz theory for van der Waals' interaction variations with distance as the number of nanolayers increases.²⁴ Therefore, the intermolecular spacing increases, resulting in the transition from short-wavelength high-frequency phonons to long-wavelength low-frequency phonons. Short-wavelength high-frequency phonons are responsible for the thermal behaviour of nanolayers. Therefore, it can be inferred that the thermal conductivity decreases exponentially across the nanolayer thickness:^{44,45}

$$\bar{k}_{nl}(r) = k_p^* + \frac{(k_{bf} - k_p^*)}{1 - e^{-m}} \left[1 - e^{-\frac{m(r-r_p)}{t}} \right] \quad (13)$$

where, m is a real positive value, usually with value of 2 (ref. 45) and r is the radial distance from the surface of the nanoparticle; r_p , to the outer boundary of the adsorbed nanolayer; $r_p + t$. In addition, the average thermal conductivity of the nanolayer can be determined as:^{44,45}

$$k_{nl} = \frac{t}{r_p(r_p + t)} \int_{r_p}^{r_p+t} \frac{1}{r^2 \bar{k}_{nl}(r)} dr \quad (14)$$

The distribution of thermal conductivity across the nanolayer, \bar{k}_{nl} , equals k_p^* at its interface with the nanoparticle and equals k_{bf} at its interface with the bulk base fluid.

2.4. Shape factor

A larger surface area facilitates heat flow to the nanoparticle. Therefore, the surface-to-volume ratio is an important shape factor in the heat transfer mechanisms. If the apparent surface area and volume of nanoparticle are S_a and V_a , then the surface area of an equivalent sphere with the same volume is S_{eq} . The sphericity, Ψ , is then determined by Ψ and C_1 as the shape factor:⁴⁶



Table 1 Material properties for nanoparticles and base fluids at 300 K^{47–50}

Property	Thermal conductivity	Density	Dynamic viscosity	Equivalent diameter
Unit	W m ⁻² K ⁻¹	m ³ kg ⁻¹	Pa s	nm
H ₂ O (water)	0.613	997	0.855 × 10 ⁻³	0.384
Ethylene glycol	0.253	1114	1.57 × 10 ⁻²	0.561
Al ₂ O ₃ (alumina)	40	3880	—	24.4
CuO	18	6510	—	18.6

$$\psi = \frac{S_{\text{eq}}}{S_a}, C_1 = \frac{3}{\psi} - 1 \quad (15)$$

3. Results and discussion

The developed model is used to better understand the underlying physics of heat transport in nanofluids, incorporating the effects of interfacial Kapitza resistance, thermal conductivity of the nanolayer, convective diffusion, surface energy and capillary condensation. A sensitivity analysis was carried out on the

newly developed thermal conductivity model. The physical properties of alumina–water (Al₂O₃:H₂O) nanofluid was utilised for this study (Table 1). Fig. 4a shows the sensitivity of thermal conductivity to Kapitza resistance. The results indicate that thermal conductivity of alumina nanoparticle reduces from 40 to below 25 (W m⁻² K⁻¹) when dispersed in water. The results in Fig. 4a show that equivalent thermal conductivity, k_{pe} , is less sensitive to Kapitza resistance, R_k , for smaller nanoparticles. However, thermal conductivity of physisorbed nanolayer, k_{nl} , is greater than that of the base fluid and smaller than that of the dispersed nanoparticle as shown in Fig. 4b. Thermal conductivity of nanofluid is predicted to converge to that of base fluid for minute size particles ($d_{\text{np}} < 10$ nm). Following Jang and Choi's heat transport model,²⁶ thermal conductivity is partially dependent on forced convective diffusion due to fluid molecule–nanoparticle interactions. The analytical results indicate that the effect of convective diffusion increases inversely proportional to the nanoparticle size and proportionally with the volumetric concentration as shown in Fig. 5. For a known volumetric concentration, a smaller particle size would result in a greater number of particles. Hence, the total surface area of nanoparticles, S_t increases with the number of particles, n_t , as the simple geometrical relation $S_{t,2} = \sqrt[3]{n_{t,2}/n_{t,1}} S_{t,1}$ ($n_{t,2} > n_{t,1}$) holds for spherical geometries. The predicted results in Fig. 5 also show that convective diffusion affects the thermal conductivity of alumina–water nanofluid by as much as 4% in theory.

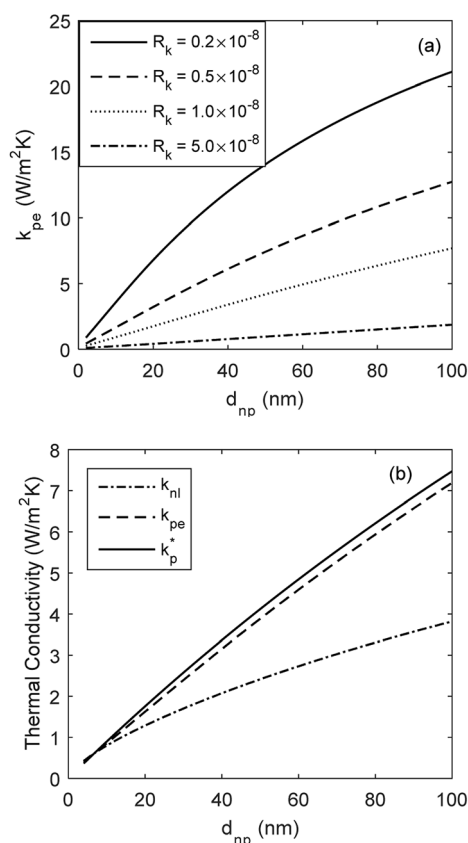


Fig. 4 Equivalent thermal conductivity k_{pe} of Al₂O₃ nanoparticles dispersed in H₂O: (a) variations with particle size d_{np} and Kapitza resistance R_k , and (b) variations of equivalent thermal conductivity k_{pe} with particle size d_{np} and with respect to those of the solid–liquid interface k_p and the physisorbed nanolayer k_{nl} .

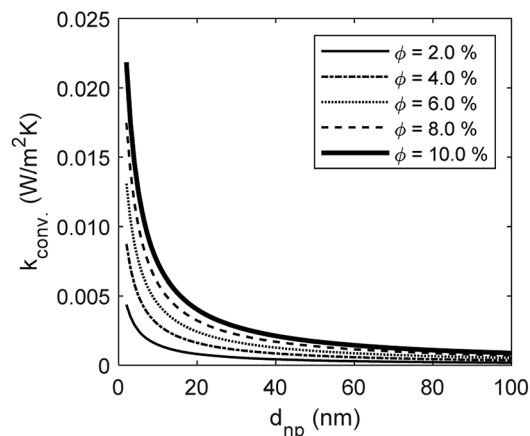


Fig. 5 The effect of Brownian motion through convective diffusion on thermal conductivity of Al₂O₃:H₂O nanofluid.



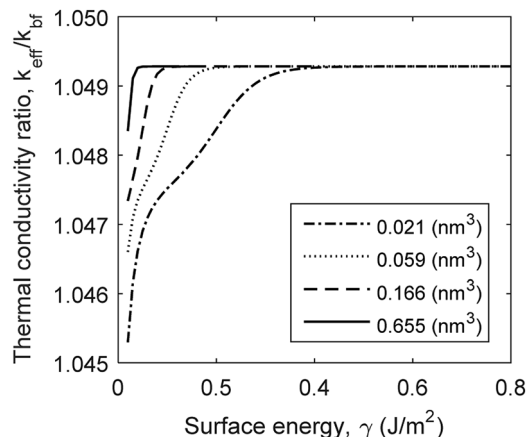


Fig. 6 Variation of thermal conductivity with surface energy and surface roughness (cavity volume) for $\text{Al}_2\text{O}_3\text{:H}_2\text{O}$ nanofluid.

The physisorption of a nanolayer is correlated to surface energy and molecular volume as shown in eqn (8). Surface energy differs for various solid–liquid combinations. In the molecular scale, surface energy also varies with atomic plane of reaction. For instance, H_2O molecules can adsorb to Al_2O_3 surface either through Al planes or O_x planes.³⁰ The surface free energy between fluid molecules vary between 20 and 80 (mJ m^{-2}) for known fluids such as water and ethylene glycol.^{51,52} The

formation of a coherent fluid film on the surface of nanoparticle is affected by the free surface energy of the fluid molecules.^{31,32} The current model shows that thermal conductivity is insensitive to surface energy, γ , above a critical limit (Fig. 6). This critical limit is affected by the volume of cavities on the surface of nanoparticles. The geometry of cavities for capillary condensation is assumed to be hemispherical. This geometrical feature can be interpreted as surface roughness in an analytical model. A greater cavity volume indicates fewer number of cavity sites with larger radii of curvature, representing greater surface roughness. Fig. 6 shows that the critical surface energy limit increases for smoother surfaces. The thermal conductivity variations with surface free energy are negligible in comparison with the effects of interface resistance, nanolayer's thermal conductivity and particle size. However, free surface energy affects the physisorption rate and its role in the formation of nanolayers cannot be neglected.

The proposed thermal conductivity model is evaluated for four nanofluids as shown in Fig. 7. The physical properties of particles and base fluids are presented in Table 1. Values of Kapitza resistances, R_k , were empirically determined using the results of Lee *et al.*⁵³ (Table 2). The predicted resistances are in the same order as those suggested for hydrophilic (or oleophilic) solid–liquid interfaces ($10^{-8} \text{ m}^2 \text{ K W}^{-1}$).^{42,43} The calculated thickness of nanolayer is larger in water than ethylene

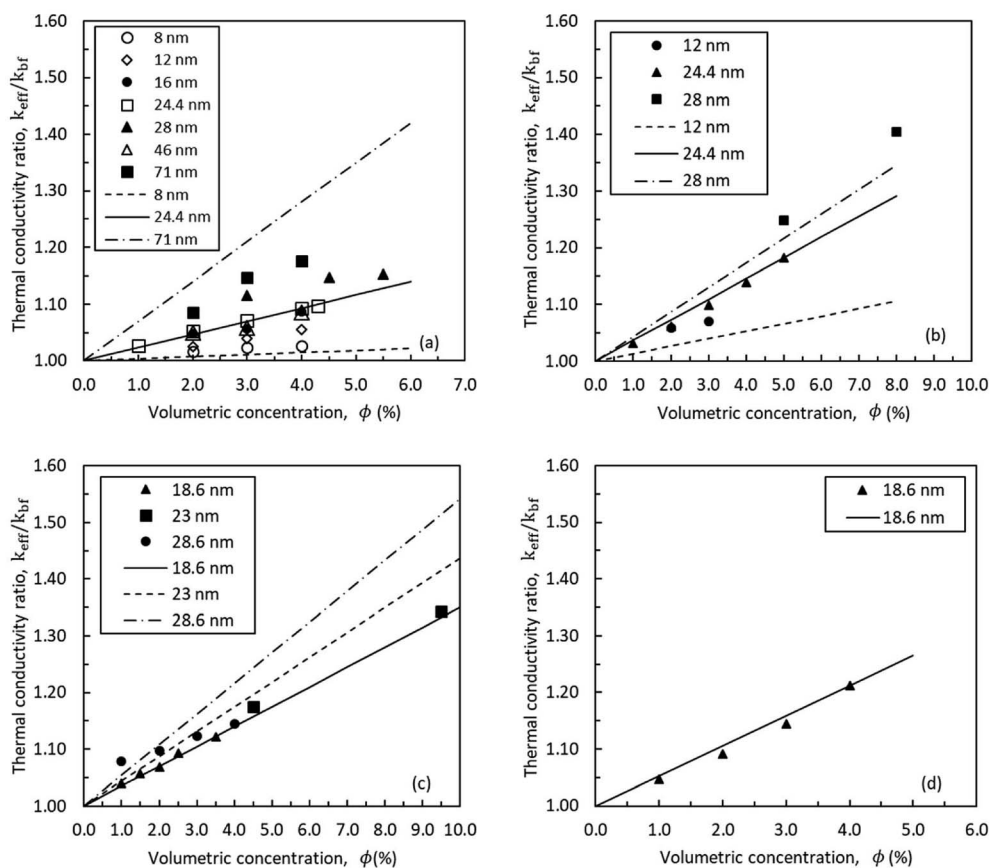


Fig. 7 Experimental results and predicted thermal conductivity using eqn (2): (a) alumina–water,^{53–55} (b) alumina–ethylene glycol,^{53–55} (c) copper oxide–water,^{53,55,56} and (d) copper oxide–ethylene glycol.⁵³



Table 2 Predicted interfacial Kapitza resistance and the number of adsorbed fluid molecular layers

Nanofluid	R_k ($\text{m}^2 \text{K W}^{-1}$)	$n_l = \nu/\nu_m$ (–)
$\text{Al}_2\text{O}_3:\text{H}_2\text{O}$	1.09×10^{-8}	2.7
$\text{Al}_2\text{O}_3:\text{EG}$	1.86×10^{-8}	1.6
$\text{CuO}:\text{H}_2\text{O}$	0.51×10^{-8}	2.7
$\text{CuO}:\text{EG}$	0.93×10^{-8}	1.6

glycol. Fig. 7 shows the measured thermal conductivity for nanofluids with various particle sizes and volumetric concentrations. The regular lines indicate the prediction for the results by Lee *et al.*⁵³ In Fig. 7a, experimental data for alumina–water nanofluid with $d_{\text{np}} = 46$ nm lies below the values for $d_{\text{np}} = 24.4$ nm and 28 nm. The discrepancy in the experimental results can be attributed to the difference in the experimental measurements conducted in different laboratories. The generic trend in the experimental results shows a rise in thermal conductivity with the nanoparticle size and volumetric concentration. The developed model closely replicates the observed trends. Similar trends are present in Fig. 7a–d. Overall, the theoretical predictions are in good agreement with the thermal conductivity ratios obtained experimentally.

4. Concluding remarks

Although various thermal conductivity models with reasonable degree of accuracy have been proposed in the literature, the heat transport at molecular scale and its relationship with the bulk properties of nanofluids were not hitherto fully understood. Therefore, a new thermal conductivity model is proposed for the molecular heat transport of nanofluids using physisorption of fluid molecules onto nanoparticle surfaces through van der Waal's interactions and forces of fluidic menisci. The proposed model incorporates the effects of particle size, shape, volumetric concentration, forced convection due to fluid molecule–nanoparticle interactions, surface energy and particles' surface roughness. It is concluded that the effect of convective diffusion on thermal conductivity diminishes as the nanoparticle size increases. It was shown that the thermal conductivity of a nanolayer can increase by an order of magnitude in comparison with the bulk fluid. It was also found that the thermal conductivity of nanoparticles reduces by more than 50% due to thermal resistance at solid–liquid interface. Thermal conductivity is also predicted to be more sensitive to surface energy for smoother surfaces with shallower interasperity cavities. Theoretical predictions are in good agreement with the experimentally measured thermal conductivities. Therefore, the expounded thermal conductivity model provides a combined study of surface energy, physisorption and bonding energy across the nanolayer, an approach not hitherto reported in literature.

Conflicts of interest

There are no conflicts to declare.

Roman letters

\bar{C}_{RM}	Nanoparticle random velocity in Brownian motion
C_1	Shape factor
c	Reaction rate ratio of adsorption to desorption
c_{bf}	Speed of wave propagation in the base fluid
c_l	Longitudinal speed of wave propagation in the solid
c_p	Specific heat of base fluid
c_t	Transverse speed of wave propagation in the solid
D_o	Einstein's diffusion coefficient
d_{bf}	Equivalent molecular diameter of the base fluid
d_n	Diameter of nanoparticle including the nanolayer thickness
d_{np}	Diameter of nanoparticle prior to dispersion
E_a	Activation energy of adsorption
H^{\ominus}	Enthalpy of reaction
h	Coefficient of heat convection
\bar{h}	Reduced Planck constant
k_B	Boltzmann constant
k_{bf}	Thermal conductivity of the base fluid
k_{eff}	Effective thermal conductivity of the nanofluid
k_{nl}	Average thermal conductivity of the nanolayer
\bar{k}_{nl}	Thermal conductivity distribution across the nanolayer
k_p	Thermal conductivity of nanoparticle prior to dispersion
k_p^*	Thermal conductivity of nanoparticle after dispersion
k_{pe}	Equivalent thermal conductivity of nanoparticle including the nanolayer
k_r	Reaction rate due to molecular collisions
M	Molar mass of base fluid
N_A	Avogadro constant
Nu	Nusselt number
n_l	Number of molecular layers in the nanolayer
n_t	Total number of nanoparticles
Pr	Prandtl number
Re	Reynolds number
R_k	Interfacial Kapitza resistance
r	Radial distance from the centre of nanoparticle
r_c	Mean radius of curvature of surface cavities/roughness
r_p	Equivalent radius of nanoparticle excluding the nanolayer
S	Surface area of the nanoparticle
S_t	Total surface area of nanoparticles
T	Absolute temperature in degrees kelvin
t	Nanolayer thickness
V	Volume of nanoparticle
ν	Total volume of nanolayer
z	Intermediate variable for pressure ratio

Greek letters

β_r	Thickness ratio of nanolayer to nanoparticle radius
γ	Surface energy
γ_r	Thermal conductivity ratio of nanolayer to dispersed nanoparticle
Δ	Variation/difference
η	Dynamic viscosity
η_s	Dynamic viscosity of fluid in the vicinity of solid surface



η_{∞}	Bulk dynamic viscosity of fluid
λ_{bf}	Mean free path of base fluid molecules
ρ_{bf}	Density of base fluid
ρ_s	Density of solid nanoparticle
ϕ	Volumetric concentration of nanoparticles
Ψ	Shape factor of nanoparticle

Abbreviations

ads.	Adsorption
cond.	Condensation
des.	Desorption
vap.	Vaporisation

References

- 1 A. Krueger, *Chem.–Eur. J.*, 2008, **14**, 1382.
- 2 K. Kalantar-Zadeh, *Nat. Nanotechnol.*, 2018, **13**(9), 770.
- 3 V. N. Mochalin, O. Shenderova, D. Ho and Y. Gogotsi, *Nat. Nanotechnol.*, 2011, **7**(1), 11.
- 4 A. M. Schrand, S. A. Ciftan Hens and O. Shenderova, *Crit. Rev. Solid State Mater. Sci.*, 2009, **34**, 18.
- 5 S. A. Angayarkanni and J. Philip, *Adv. Colloid Interface Sci.*, 2015, **225**, 146.
- 6 D. K. Devendiran and V. A. Amirtham, *Renewable Sustainable Energy Rev.*, 2016, **60**, 21.
- 7 L. S. Sundar, K. V. Sharma, M. K. Singh and A. C. M. Sousa, *Renewable Sustainable Energy Rev.*, 2017, **68**, 185.
- 8 M. Ivanoc and O. Shenderova, *Curr. Opin. Solid State Mater. Sci.*, 2017, **21**, 17.
- 9 X. Q. Wang and A. S. Mujumdar, *Int. J. Therm. Sci.*, 2007, **46**, 1.
- 10 W. Yu, H. Xie, Y. Li, L. Chen and Q. Wang, *Colloids Surf., A*, 2011, **380**, 1.
- 11 S. U. S. Choi, in: *The Proceedings of the 1995 ASME International Mechanical Engineering Congress and Exposition*, San Francisco, USA, ASME, FED 231/MD, 1995, vol. 66, p. 99.
- 12 J. C. Maxwell, *A Treatise of Electricity and Magnetism*, Oxford University Press, London, 3rd edn, 1892, Part II, ch. IX, vol. 1, p. 435.
- 13 W. J. Minkowycz, E. M. Sparrow and J. P. Abraham, *Nanoparticle heat transfer and fluid flow*, CRC Press, Taylor and Francis Group, 2013, vol. 4, ch. 2, p. 41, ISBN: 978-1-4398-6192-9.
- 14 S. Kakaç and A. Pramuanjaroenkij, *Int. J. Heat Mass Transfer*, 2009, **52**, 3187.
- 15 H. Ş. Aybar, M. Sharifpur, M. R. Azizian, M. Mehrabi and J. P. Meyer, *Heat Transfer Eng.*, 2015, **36**(13), 1085.
- 16 M. Liu, C. Ding and J. Wang, *RSC Adv.*, 2016, **6**, 3571.
- 17 P. V. Trinh, N. N. Anh, B. H. Thang, L. D. Quang, N. T. Hong, N. M. Hong, P. H. Khoi, P. N. Minh and P. N. Hong, *RSC Adv.*, 2017, **7**, 318.
- 18 D. Lee, J. W. Kim and B. G. Kim, *J. Phys. Chem. B*, 2006, **110**, 4323.
- 19 X. F. Li, D. S. Zhu, X. J. Wang, N. Wang, J. W. Gao and H. Li, *Thermochim. Acta*, 2008, **469**, 98.
- 20 D. Zhu, X. Li, N. Wang, X. Wang, J. Gao and H. Li, *Curr. Appl. Phys.*, 2009, **9**, 131.
- 21 G. Xia, H. Jiang, R. Liu and Y. Zhai, *Int. J. Therm. Sci.*, 2014, **84**, 118.
- 22 B. X. Wang, L. P. Zhou and X. F. Peng, *Int. J. Heat Mass Transfer*, 2003, **46**, 2665.
- 23 I. Langmuir, *J. Am. Chem. Soc.*, 1916, **38**(11), 2221.
- 24 S. Brunauer, P. H. Emmett and E. Teller, *J. Am. Chem. Soc.*, 1938, **60**(2), 309.
- 25 S. A. Arrhenius, *Z. Phys. Chem.*, 1889, **4**, 226.
- 26 S. P. Jang and S. U. S. Choi, *Appl. Phys. Lett.*, 2004, **84**(21), 4316.
- 27 H. Shahmohammadi, R. Rahmani, H. Rahnejat, C. P. Garner and N. Balodimos, *Tribol. Int.*, 2017, **113**, 50.
- 28 S. Whitaker, *AIChE J.*, 1972, **18**(2), 361.
- 29 A. Einstein, *Ann. Phys.*, 1905, **322**(8), 549.
- 30 N. H. de Leeuw and S. C. Parker, *J. Am. Ceram. Soc.*, 1999, **82**(11), 3209.
- 31 P. Atkins, J. de Paula and J. Keeler, *Physical Chemistry*, Oxford University Press, UK, 10th edn, 2018.
- 32 M. F. Al-Samieh and H. Rahnejat, *J. Phys. D: Appl. Phys.*, 2002, **35**, 2311.
- 33 R. Gohar and H. Rahnejat, *Fundamentals of Tribology*, Imperial College Press, London, 2nd edn, 2008.
- 34 G. A. Pilkington and W. H. Briscoe, *Adv. Colloid Interface Sci.*, 2012, **179–182**, 68.
- 35 W. H. Briscoe and R. G. Horn, *Langmuir*, 2002, **18**, 3945.
- 36 W. Thomson, *Proc. Royal Soc.*, 1870, **7**, 63.
- 37 S. Cai and B. Bhushan, *Philos. Trans. R. Soc., A*, 2008, **366**, 1627.
- 38 P. L. Kapitza, *Phys. Rev.*, 1941, **60**, 354.
- 39 I. M. Khalatnikov, *Zh. Eksp. Teor. Fiz.*, 1952, **22**, 687.
- 40 G. L. Pollack, *Rev. Mod. Phys.*, 1969, **41**(1), 48.
- 41 E. V. Timofeeva, A. N. Gavrilov, J. M. McCloskey and Y. V. Tolmachev, *Phys. Rev. E*, 2007, **76**, 061203.
- 42 A. S. Tascini, J. Armstrong, E. Chiavazzo, M. Fasano, P. Asinari and F. Bresme, *Phys. Chem. Chem. Phys.*, 2017, **19**, 3244.
- 43 L. M. Schwartz, E. J. Garboczi and D. P. Bentz, *J. Appl. Phys.*, 1995, **78**(10), 5898.
- 44 A. Khodayari, M. Fasano, M. Bozorg Bigdeli, S. Mohammadnejad, E. Chiavazzo and P. Asinari, *Case Studies in Thermal Engineering*, 2018, **12**, 454.
- 45 R. Pasrija and S. Srivastava, *Heat Transfer—Asian Research*, 2014, **43**(3), 288.
- 46 R. L. Hamilton and O. K. Crosser, *Ind. Eng. Chem. Fundam.*, 1962, **1**(3), 187.
- 47 F. D. S. Marquis and L. P. F. Chibante, *JOM*, 2005, **57**(12), 32.
- 48 S. U. S. Choi and J. A. Eastman, *1995 International mechanical engineering congress and exhibition*, ASME-Publications-Fed, San Francisco, CA, United States, 12–17 Nov 1995, vol. 231, p. 99.



- 49 M. Sheikholeslami and D. D. Ganji, *Comput. Methods Appl. Mech. Eng.*, 2015, **283**, 651.
- 50 S. K. Das, N. Putra, P. Thiesen and W. Roetzel, *J. Heat Transfer*, 2003, **125**, 567.
- 51 L. Martinez, R. Nevshupa, L. Alvarez, Y. Huttel, J. Mendez, E. Roman, E. Mozas, J. R. Valdes, M. A. Jimenez, Y. Gachon, C. Heau and F. Faverjon, *Tribol. Int.*, 2009, **42**, 584.
- 52 J. N. Israelachvili, *Intermolecular and Surface Forces*, Academic Press, London, 2nd edn, 1992.
- 53 S. Lee, S. U. S. Choi, S. Li and J. A. Eastman, *J. Heat Transfer*, 1999, **121**, 280.
- 54 M. P. Beck, Y. Yuan, P. Warriar and A. S. Teja, *J. Nanopart. Res.*, 2009, **11**, 1129.
- 55 X. Wang, X. Xu and S. U. S. Choi, *J. Thermophys. Heat Transfer*, 1999, **13**(4), 474.
- 56 J. Cai, X. Hu, B. Xiao, Y. Zhou and W. Wei, *Int. J. Heat Mass Transfer*, 2017, **105**, 623.

