



Article

Responses to the primary health care needs of Aboriginal and Torres Strait Islander women experiencing violence: A scoping review of policy and practice guidelines

Walker, Natasha, Mackean, Tamara, Longbottom, Marlene, Coombes, Julieann, Bennett-Brook, Keziah, Clapham, Kathleen, Ivers, Rebecca, Hackett, Maree, Redfern, Julie and Cullen, Patricia

Available at <http://clock.uclan.ac.uk/34825/>

Walker, Natasha, Mackean, Tamara, Longbottom, Marlene, Coombes, Julieann, Bennett-Brook, Keziah, Clapham, Kathleen, Ivers, Rebecca, Hackett, Maree ORCID: 0000-0003-1211-9087, Redfern, Julie et al (2020) Responses to the primary health care needs of Aboriginal and Torres Strait Islander women experiencing violence: A scoping review of policy and practice guidelines. Health Promotion Journal of Australia .

It is advisable to refer to the publisher's version if you intend to cite from the work.

<http://dx.doi.org/10.1002/hpja.417>

For more information about UCLan's research in this area go to <http://www.uclan.ac.uk/researchgroups/> and search for <name of research Group>.

For information about Research generally at UCLan please go to <http://www.uclan.ac.uk/research/>

All outputs in CLoK are protected by Intellectual Property Rights law, including Copyright law. Copyright, IPR and Moral Rights for the works on this site are retained by the individual authors and/or other copyright owners. Terms and conditions for use of this material are defined in the [policies](#) page.

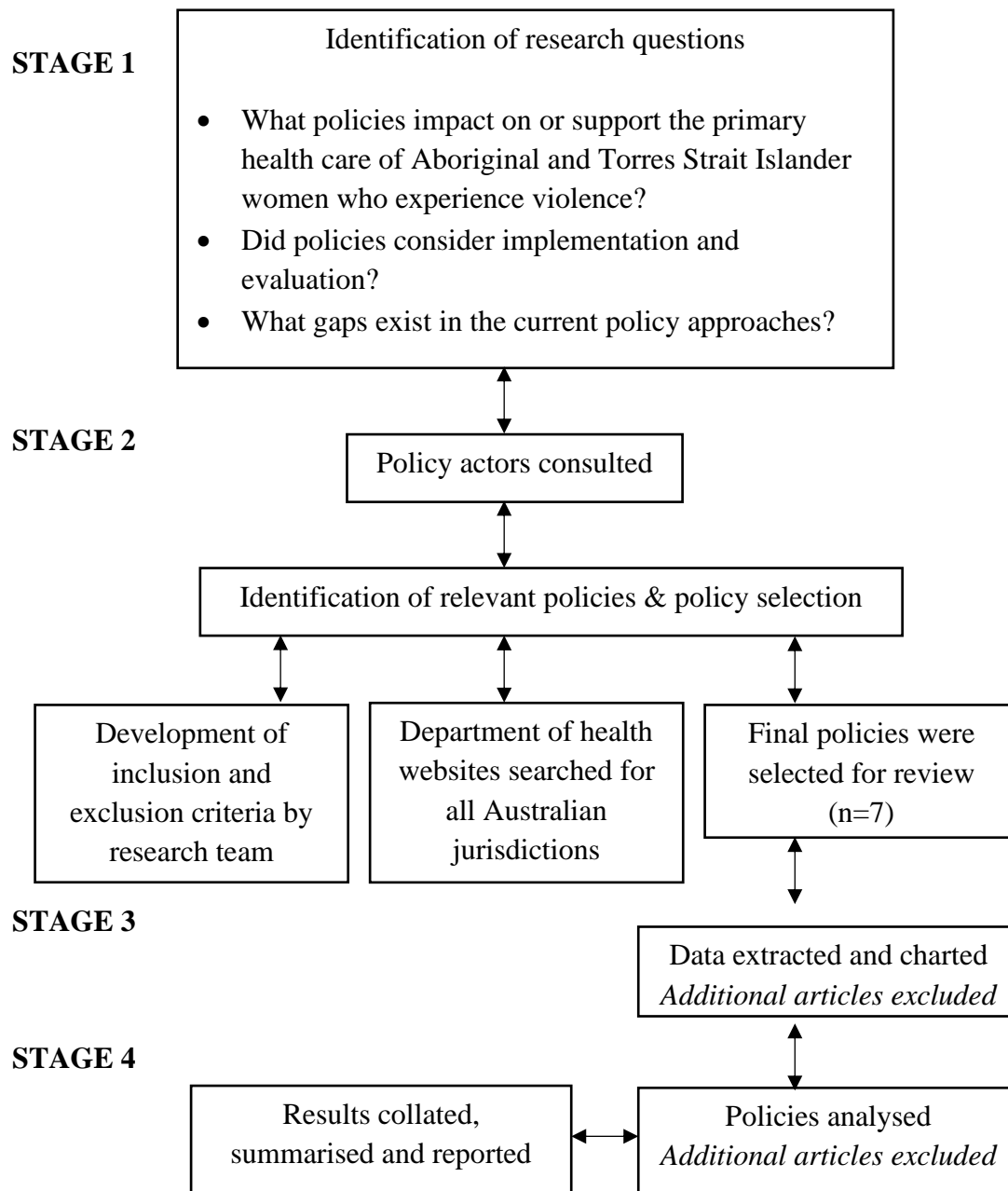


Figure 1: Iterative diagram of stages in scoping review adopted from Arskey and O'Malley's framework and Levac et al's recommendations.