

**Erratum: “The JCMT BISTRO Survey: Magnetic Fields Associated with a Network of Filaments in NGC 1333” (2020, *ApJ*, 899, 28)**

Yasuo Doi¹, Tetsuo Hasegawa², Ray S. Furuya³, Simon Coude^{4,5}, Charles L. H. Hull^{6,7,73}, Doris Arzoumanian^{8,9}, Pierre Bastien^{5,10}, Michael Chun-Yuan Chen¹¹, James Di Francesco^{11,12}, Rachel Friesen¹³, Martin Houde¹⁴, Shu-ichiro Inutsuka⁹, Steve Mairs¹⁵, Masafumi Matsumura¹⁶, Takashi Onaka^{17,18}, Sarah Sadavoy¹⁹, Yoshito Shimajiri^{2,20}, Mehrnoosh Tahani²¹, Kohji Tomisaka^{22,23}, Chakali Eswaraiah^{24,25}, Patrick M. Koch²⁶, Kate Pattle²⁷, Chang Won Lee^{28,29}, Motohide Tamura^{17,30}, David Berry¹⁵, Tao-Chung Ching^{24,25}, Jihye Hwang^{28,29}, Woojin Kwon^{28,31}, Archana Soam^{4,28}, Jia-Wei Wang²⁶, Shih-Ping Lai^{26,32}, Keping Qiu^{33,34}, Derek Ward-Thompson³⁵, Do-Young Byun^{28,29}, Hwei-Ru Vivien Chen^{26,32}, Wen Ping Chen³⁶, Zhiwei Chen³⁷, Jungeon Cho³⁸, Minhoo Choi²⁸, Yunhee Choi²⁸, Antonio Chrysostomou³⁹, Eun Jung Chung³⁸, Pham Ngoc Diep⁴⁰, Hao-Yuan Duan³², Lapo Fanciullo²⁶, Jason Fiege⁴¹, Erica Franzmann⁴¹, Per Friberg¹⁵, Gary Fuller⁴², Tim Gleddhill³⁹, Sarah F. Graves¹⁵, Jane S. Greaves⁴³, Matt J. Griffin⁴³, Qilao Gu⁴⁴, Ilseung Han^{28,29}, Jennifer Hatchell⁴⁵, Saeko S. Hayashi⁴⁶, Thiem Hoang^{28,29}, Tsuyoshi Inoue⁹, Kazunari Iwasaki⁴⁷, Il-Gyo Jeong²⁸, Doug Johnstone^{11,12}, Yoshihiro Kanamori¹, Ji-hyun Kang²⁸, Miju Kang²⁸, Sung-ju Kang²⁸, Akimasa Kataoka²², Koji S. Kawabata^{48,49,50}, Francisca Kemper^{26,51}, Gwanjeong Kim⁵², Jongsoo Kim^{28,29}, Kee-Tae Kim²⁸, Kyoung Hee Kim²⁸, Mi-Ryang Kim²⁸, Shinyoung Kim^{28,29}, Jason M. Kirk³⁵, Masato I. N. Kobayashi⁵³, Vera Konyves³⁵, Takayoshi Kusune²², Jungmi Kwon¹⁷, Kevin Lacaille^{54,55}, Chi-Yun Law^{44,56}, Chin-Fei Lee²⁶, Hyeeseung Lee³⁸, Jeong-Eun Lee⁵⁷, Sang-Sung Lee^{28,29}, Yong-Hee Lee^{15,57}, Dalei Li⁵⁸, Di Li^{24,59}, Hua-bai Li⁴⁴, Hong-Li Liu^{44,60}, Junhao Liu^{33,34}, Sheng-Yuan Liu²⁶, Tie Liu⁶¹, Ilse de Looze⁶², A-Ran Lyo²⁸, Brenda C. Matthews^{11,12}, Gerald H. Moriarty-Schieven¹², Tetsuya Nagata⁶³, Fumitaka Nakamura^{22,23}, Hiroyuki Nakanishi²⁰, Nagayoshi Ohashi²⁶, Geumsook Park²⁸, Harriet Parsons¹⁵, Nicolas Peretto⁴³, Tae-Soo Pyo^{23,46}, Lei Qian²⁴, Ramprasad Rao²⁶, Mark G. Rawlings¹⁵, Brendan Retter⁴³, John Richer^{64,65}, Andrew Rigby⁴³, Hiro Saito⁶⁶, Giorgio Savini⁶², Anna M. M. Scaife⁴², Masumichi Seta⁶⁷, Hiroko Shinnaga²⁰, Ya-Wen Tang²⁶, Yusuke Tsukamoto²⁰, Serena Viti⁶², Hongchi Wang³⁷, Anthony P. Whitworth⁴³, Hsi-Wei Yen²⁶, Hyunju Yoo²⁸, Jinghua Yuan²⁵, Hyeong-Sik Yun⁵⁷, Tetsuya Zenko⁶³, Chuan-Peng Zhang^{24,25}, Guoyin Zhang²⁴, Yapeng Zhang⁴⁴, Jianjun Zhou⁵⁸, Lei Zhu²⁴, Philippe André⁶⁸, C. Darren Dowell⁶⁹, Stewart P. S. Eyres³⁵, Sam Falle⁷⁰, Sven van Loo⁷¹, and Jean-François Robitaille⁷²

¹ Department of Earth Science and Astronomy, Graduate School of Arts and Sciences, The University of Tokyo, 3-8-1 Komaba, Meguro, Tokyo 153-8902, Japan
doi@ea.c.u-tokyo.ac.jp

² National Astronomical Observatory of Japan, National Institutes of Natural Sciences, Osawa, Mitaka, Tokyo 181-8588, Japan

³ Institute of Liberal Arts and Sciences, Tokushima University, Minami Jousanajima-machi 1-1, Tokushima 770-8502, Japan

⁴ SOFIA Science Center, Universities Space Research Association, NASA Ames Research Center, M.S. N232-12, Moffett Field, CA 94035, USA

⁵ Centre de Recherche en Astrophysique du Québec (CRAQ), Université de Montréal, Département de Physique, C.P. 6128 Succ. Centre-ville, Montréal, QC H3C 3J7, Canada

⁶ National Astronomical Observatory of Japan, NAOJ Chile, Alonso de Córdova 3788, Office 61B, 7630422, Vitacura, Santiago, Chile

⁷ Joint ALMA Observatory, Alonso de Córdova 3107, Vitacura, Santiago, Chile

⁸ Instituto de Astrofísica e Ciências do Espaço, Universidade do Porto, CAUP, Rua das Estrelas, PT4150-762 Porto, Portugal

⁹ Department of Physics, Graduate School of Science, Nagoya University, Furo-cho, Chikusa-ku, Nagoya 464-8602, Japan

¹⁰ Institut de Recherche sur les Exoplanètes (iREx), Université de Montréal, Département de Physique, C.P. 6128 Succ. Centre-ville, Montréal, QC H3C 3J7, Canada

¹¹ Department of Physics and Astronomy, University of Victoria, Victoria, BC V8P 1A1, Canada

¹² Herzberg Astronomy and Astrophysics Research Centre, National Research Council of Canada, 5071 West Saanich Rd., Victoria, BC V9E 2E7, Canada

¹³ National Radio Astronomy Observatory, 520 Edgemont Rd., Charlottesville, VA 22903, USA

¹⁴ Department of Physics and Astronomy, The University of Western Ontario, 1151 Richmond Street, London, ON N6A 3K7, Canada

¹⁵ East Asian Observatory, 660 N. A’ohōkū Place, University Park, Hilo, HI 96720, USA

¹⁶ Faculty of Education, Kagawa University, Saiwai-cho 1-1, Takamatsu, Kagawa, 760-8522, Japan

¹⁷ Department of Astronomy, Graduate School of Science, The University of Tokyo, 7-3-1 Hongo, Bunkyo-ku, Tokyo 113-0033, Japan

¹⁸ Department of Physics, Faculty of Science and Engineering, Meisei University, 2-1-1 Hodokubo, Hino, Tokyo 191-8506, Japan

¹⁹ Department for Physics, Engineering Physics and Astrophysics, Queen’s University, Kingston, ON K7L 3N6, Canada

²⁰ Department of Physics and Astronomy, Graduate School of Science and Engineering, Kagoshima University, 1-21-35 Korimoto, Kagoshima, Kagoshima 890-0065, Japan

²¹ Dominion Radio Astrophysical Observatory, Herzberg Astronomy and Astrophysics Research Centre, National Research Council Canada, P.O. Box 248, Penticton, BC V2A 6J9 Canada

²² Division of Theoretical Astronomy, National Astronomical Observatory of Japan, Mitaka, Tokyo 181-8588, Japan

²³ SOKENDAI (The Graduate University for Advanced Studies), Hayama, Kanagawa 240-0193, Japan

²⁴ CAS Key Laboratory of FAST, National Astronomical Observatories, Chinese Academy of Sciences, People’s Republic of China

²⁵ National Astronomical Observatories, Chinese Academy of Sciences, A20 Datun Road, Chaoyang District, Beijing 100012, People’s Republic of China

²⁶ Institute of Astronomy and Astrophysics, Academia Sinica, 11F of Astronomy-Mathematics Building, AS/NTU, No. 1, Sec. 4, Roosevelt Rd., Taipei 10617, Taiwan

²⁷ Centre for Astronomy, School of Physics, National University of Ireland Galway, University Road, Galway, Ireland

²⁸ Korea Astronomy and Space Science Institute (KASI), 776 Daedeokdae-ro, Yuseong-gu, Daejeon 34055, Republic of Korea

²⁹ University of Science and Technology, Korea, 217 Gajang-ro, Yuseong-gu, Daejeon 34113, Republic of Korea

³⁰ Astrobiology Center, National Institutes of Natural Sciences, Osawa, Mitaka, Tokyo 181-8588, Japan

³¹ Department of Earth Science Education, Seoul National University (SNU), 1 Gwanak-ro, Gwanak-gu, Seoul 08826, Republic of Korea

³² Institute of Astronomy and Department of Physics, National Tsing Hua University, Hsinchu 30013, Taiwan

³³ School of Astronomy and Space Science, Nanjing University, 163 Xianlin Avenue, Nanjing 210023, People’s Republic of China

- ³⁴ Key Laboratory of Modern Astronomy and Astrophysics (Nanjing University), Ministry of Education, Nanjing 210023, People's Republic of China
- ³⁵ Jeremiah Horrocks Institute, University of Central Lancashire, Preston PR1 2HE, UK
- ³⁶ Institute of Astronomy, National Central University, Chung-Li 32054, Taiwan
- ³⁷ Purple Mountain Observatory, Chinese Academy of Sciences, 2 West Beijing Road, 210008 Nanjing, People's Republic of China
- ³⁸ Department of Astronomy and Space Science, Chungnam National University, 99 Daehak-ro, Yuseong-gu, Daejeon 34134, Republic of Korea
- ³⁹ School of Physics, Astronomy & Mathematics, University of Hertfordshire, College Lane, Hatfield, Hertfordshire AL10 9AB, UK
- ⁴⁰ Vietnam National Space Center, Vietnam Academy of Science and Technology, 18 Hoang Quoc Viet, Hanoi, Vietnam
- ⁴¹ Department of Physics and Astronomy, The University of Manitoba, Winnipeg, MB R3T 2N2, Canada
- ⁴² Jodrell Bank Centre for Astrophysics, School of Physics and Astronomy, University of Manchester, Oxford Road, Manchester, M13 9PL, UK
- ⁴³ School of Physics and Astronomy, Cardiff University, The Parade, Cardiff, CF24 3AA, UK
- ⁴⁴ Department of Physics, The Chinese University of Hong Kong, Shatin, N.T., People's Republic of China
- ⁴⁵ Physics and Astronomy, University of Exeter, Stocker Road, Exeter, EX4 4QL, UK
- ⁴⁶ Subaru Telescope, National Astronomical Observatory of Japan, 650 N. A'ohōkū Place, Hilo, HI 96720, USA
- ⁴⁷ Department of Environmental Systems Science, Doshisha University, Tatara, Miyakodani 1-3, Kyotanabe, Kyoto 610-0394, Japan
- ⁴⁸ Hiroshima Astrophysical Science Center, Hiroshima University, Kagamiyama 1-3-1, Higashi-Hiroshima, Hiroshima 739-8526, Japan
- ⁴⁹ Department of Physics, Hiroshima University, Kagamiyama 1-3-1, Higashi-Hiroshima, Hiroshima 739-8526, Japan
- ⁵⁰ Core Research for Energetic Universe (CORE-U), Hiroshima University, Kagamiyama 1-3-1, Higashi-Hiroshima, Hiroshima 739-8526, Japan
- ⁵¹ European Southern Observatory (ESO), Karl-Schwarzschild-Straße 2, D-85748 Garching, Germany
- ⁵² Nobeyama Radio Observatory, National Astronomical Observatory of Japan, National Institutes of Natural Sciences, Nobeyama, Minamimaki, Minamisaku, Nagano 384-1305, Japan
- ⁵³ Department of Earth and Space Science, Graduate School of Science, Osaka University, 1-1 Machikaneyama-cho, Toyonaka, Osaka, Japan
- ⁵⁴ Department of Physics and Astronomy, McMaster University, Hamilton, ON L8S 4M1, Canada
- ⁵⁵ Department of Physics and Atmospheric Science, Dalhousie University, Halifax, NS B3H 4R2, Canada
- ⁵⁶ Department of Space, Earth & Environment, Chalmers University of Technology, SE-412 96 Gothenburg, Sweden
- ⁵⁷ School of Space Research, Kyung Hee University, 1732 Deogyong-daero, Giheung-gu, Yongin-si, Gyeonggi-do 17104, Republic of Korea
- ⁵⁸ Xinjiang Astronomical Observatory, Chinese Academy of Sciences, 150 Science 1-Street, Urumqi 830011, Xinjiang, People's Republic of China
- ⁵⁹ University of Chinese Academy of Sciences, Beijing 100049, People's Republic of China
- ⁶⁰ Departamento de Astronomía, Universidad de Concepción, Av. Esteban Iturra s/n, Distrito Universitario, 160-C, Chile
- ⁶¹ Shanghai Astronomical Observatory, Chinese Academy of Sciences, 80 Nandan Road, Shanghai 200030, People's Republic of China
- ⁶² Physics & Astronomy Dept., University College London, WC1E 6BT London, UK
- ⁶³ Department of Astronomy, Graduate School of Science, Kyoto University, Sakyo-ku, Kyoto 606-8502, Japan
- ⁶⁴ Astrophysics Group, Cavendish Laboratory, J J Thomson Avenue, Cambridge CB3 0HE, UK
- ⁶⁵ Kavli Institute for Cosmology, Institute of Astronomy, University of Cambridge, Madingley Road, Cambridge, CB3 0HA, UK
- ⁶⁶ Department of Astronomy and Earth Sciences, Tokyo Gakugei University, Koganei, Tokyo 184-8501, Japan
- ⁶⁷ Department of Physics, School of Science and Technology, Kwansai Gakuin University, 2-1 Gakuen, Sanda, Hyogo 669-1337, Japan
- ⁶⁸ Laboratoire AIM CEA/DSM-CNRS-Université Paris Diderot, IRFU/Service d'Astrophysique, CEA Saclay, F-91191 Gif-sur-Yvette, France
- ⁶⁹ Jet Propulsion Laboratory, M/S 169-506, 4800 Oak Grove Drive, Pasadena, CA 91109, USA
- ⁷⁰ Department of Applied Mathematics, University of Leeds, Woodhouse Lane, Leeds LS2 9JT, UK
- ⁷¹ School of Physics and Astronomy, University of Leeds, Woodhouse Lane, Leeds LS2 9JT, UK
- ⁷² Université Grenoble Alpes, CNRS, IPAG, F-38000 Grenoble, France

Received 2021 March 24; published 2021 April 16

1. Description of the Error

In the published article, we presented high-resolution polarimetry data obtained by using JCMT SCUBA-2/POL-2, and compared them with the larger-scale magnetic structure observed by Planck (Planck Collaboration et al. 2020). There was a miscalculation in the analysis of the Planck data for comparison, and the mean position angle of the Planck magnetic field should be corrected from $-40^\circ \pm 7^\circ$ to $-48^\circ \pm 6^\circ$.

Thus, we replace the descriptions in the published article as follows. In Section 4.2, paragraph 3, the second sentence should read: “The differences between the orientations of IRAS 4A, IRAS 4B, and IRAS 2A are not statistically significant, but they do show significantly different orientations from those of the global B -field observed by Planck ($-48^\circ \pm 6^\circ$; Section 4.1).” In Section 4.1, paragraph 3, the second line should read: “The Planck B -field orientation shows a smoothly and slowly varying field distribution with a position angle of $-48^\circ \pm 6^\circ$ in our observed NGC 1333 area.” Accordingly, we replace Figures 4, 5, 9, 10, and 17 to reflect the correct Planck data.

As described above, this error of modest magnitude is related only to our derivation of the Planck polarization angle, and the JCMT observation results are unaffected. Therefore, all conclusions drawn in the published article are unchanged even after the above correction is applied. The 1 pc scale magnetic field observed by Planck shows a smooth distribution, and the interstellar magnetic field in molecular clouds increases the complexity significantly on the scale of less than 1 pc.

⁷³ NAOJ Fellow.

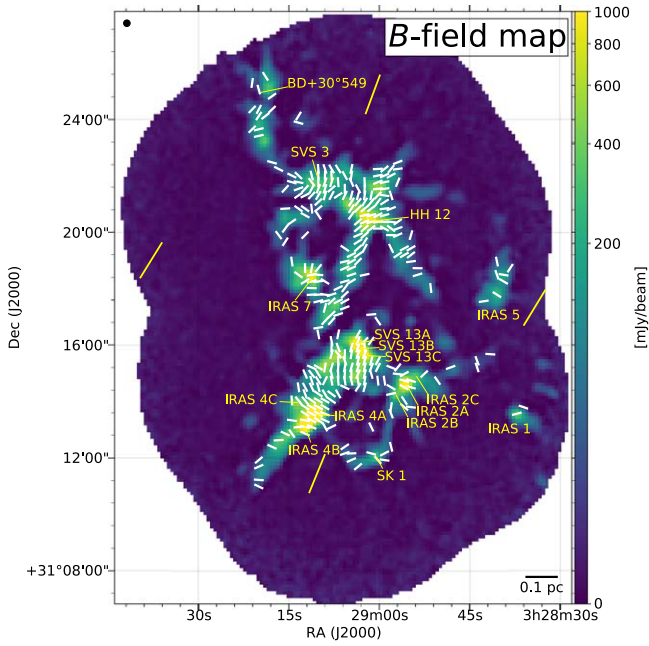


Figure 4. Observed B -field orientation (white line segments) overlaid on a color-scale map of Stokes I . The B -field orientation is assumed to be perpendicular to the observed polarization. B -field orientation is shown for the data points with $I \geq 25$ mJy beam $^{-1}$ ($I/\delta I > 10$) and $PI/\delta PI \geq 3$. The length of the line segments has been normalized to show only the orientation of the B -field. Yellow line segments are the B -field orientation observed by the Planck satellite (Planck Collaboration et al. 2020), whose spatial resolution is set as $10'$ in this analysis. The JCMT beam ($14''$) is shown in the upper left corner of the figure. The spacing of the JCMT and Planck B -field line segments is equal to the beam size of the observation. Names of main YSOs and infrared sources tabulated by Sandell & Knee (2001) are shown.

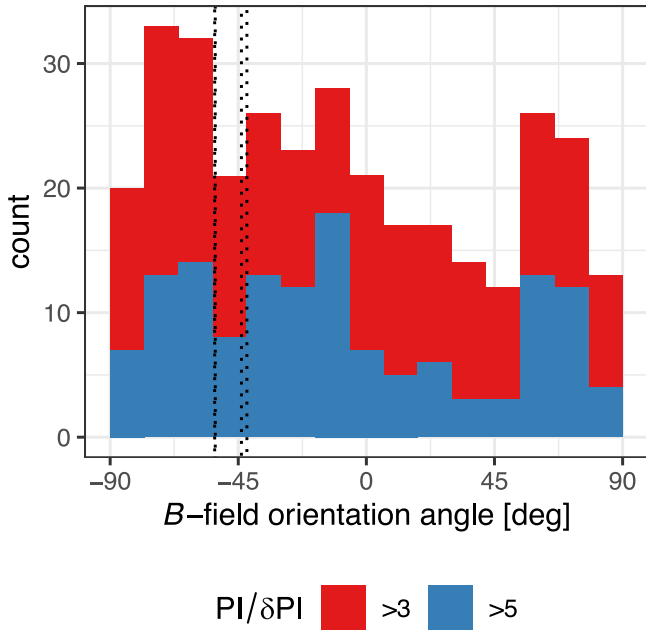


Figure 5. Histogram of the position angles for the B -field orientations ($\psi + 90^\circ$) shown in Figure 4. The typical estimation error of $\psi(1\sigma)$ is 4° for $PI/\delta PI > 5$ and 5° for $PI/\delta PI > 3$. So we set the bin size of the histogram as 12° . Dotted lines indicate the B -field orientation observed with Planck within the JCMT field of view (see the yellow line segments in Figure 4). The distribution of position angles is estimated as $-46^\circ \pm 58^\circ$ for the B -field orientation observed by JCMT and $-48^\circ \pm 6^\circ$ for that by Planck.

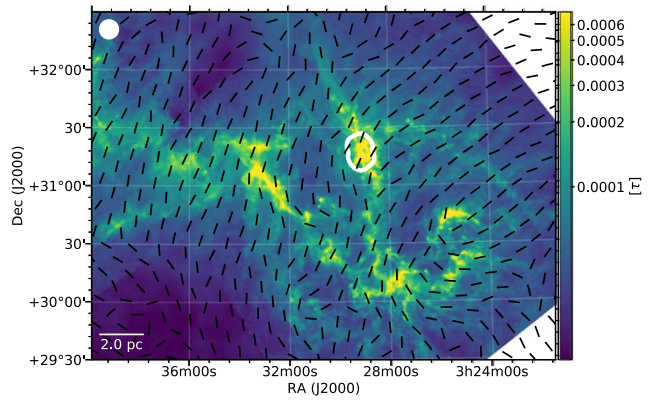


Figure 9. Planck observed B -field orientations in the Perseus molecular cloud (Planck Collaboration et al. 2020) are shown as black line segments. Here, we set the spatial resolution of the Planck data as a $10'$ FWHM Gaussian to achieve good S/Ns. The assumed beam ($10'$) is shown in the upper left corner of the figure. Color scale is the dust optical depth at 353 GHz estimated by Zari et al. (2016). The western half of the Perseus molecular cloud complex is shown in this figure. Our observed area at NGC 1333 is marked in white.

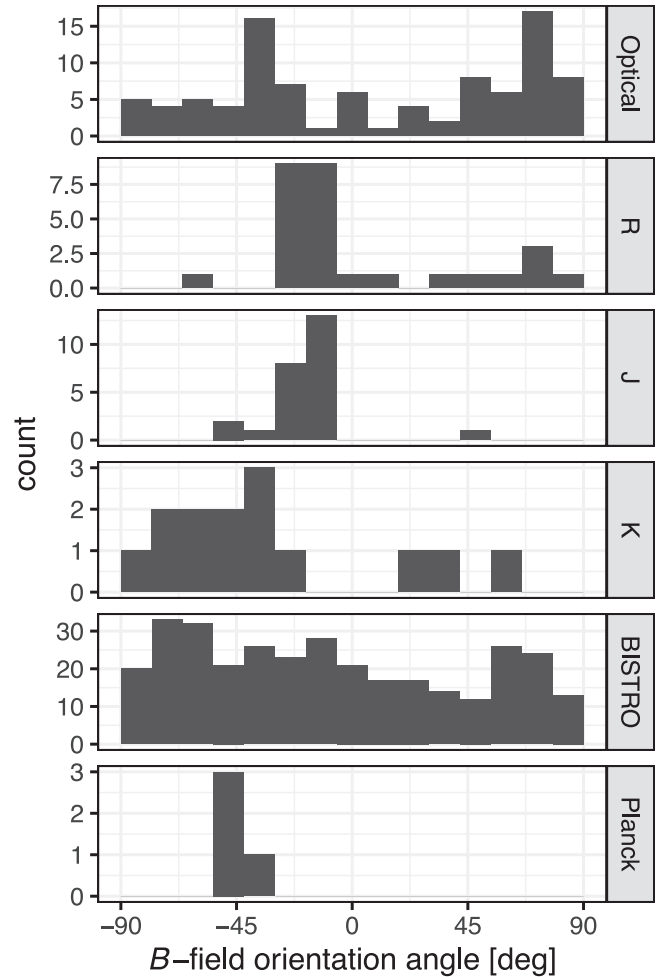


Figure 10. Histograms of the position angles for the B -field orientations observed by optical and near-infrared polarimetry. Optical data (762.5 nm) are from Goodman et al. (1990). R -band and J -band data are from Alves et al. (2011). K -band data are from Tamura et al. (1988). Submillimeter data taken by BISTRO and Planck, rotated by 90° , are shown for comparison. Note that the spatial coverages are different for individual observations, especially R -band and J -band data by Alves et al. (2011), which cover only a small area south of the IRAS 4A and IRAS 4B (see text).

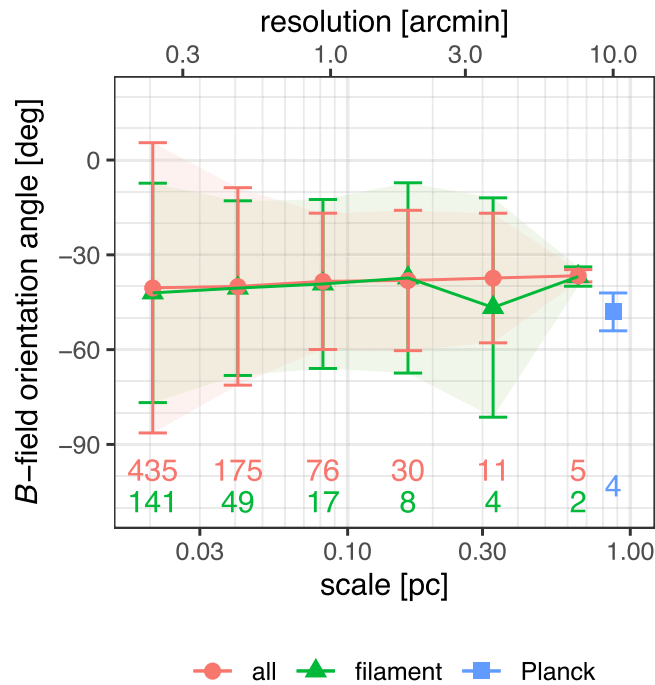


Figure 17. Scale dependence of the circular mean and the circular standard deviation ($\pm 1\sigma$) of the B -field orientation in NGC 1333. Here we add the estimated missing large-scale flux of Q and U (Section 2.4) to our observed Q and U values to evaluate the B -field orientation of larger spatial scales (=lower spatial resolutions). We apply Gaussian-smoothing to Q and U values and estimate the B -field orientations at reduced spatial resolutions. The points “all” correspond to all the independent JCMT observations (white line segments in Figure 4 and smaller number of beams for reduced spatial resolutions), while the points “filament” correspond to the beams selected from “all” whose central positions are on the filaments (#7, #13, #15, and #18 in Figure 6). The B -field orientation observed by Planck (10' spatial resolution; yellow line segments in Figure 4) is also shown. Note that the Planck data cover a wider field than the BISTRO data (see Figure 4). The colored labels at the bottom of the figure indicate the number of independent beams.

ORCID iDs

Yasuo Doi <https://orcid.org/0000-0001-8746-6548>
Tetsuo Hasegawa <https://orcid.org/0000-0003-1853-0184>
Ray S. Furuya <https://orcid.org/0000-0003-0646-8782>
Simon Coudé <https://orcid.org/0000-0002-0859-0805>
Charles L. H. Hull <https://orcid.org/0000-0002-8975-7573>
Doris Arzoumanian <https://orcid.org/0000-0002-1959-7201>
Pierre Bastien <https://orcid.org/0000-0002-0794-3859>
Michael Chun-Yuan Chen <https://orcid.org/0000-0003-4242-973X>
James Di Francesco <https://orcid.org/0000-0002-9289-2450>
Rachel Friesen <https://orcid.org/0000-0001-7594-8128>
Martin Houde <https://orcid.org/0000-0003-4420-8674>
Shu-ichiro Inutsuka <https://orcid.org/0000-0003-4366-6518>
Steve Mairs <https://orcid.org/0000-0002-6956-0730>
Masafumi Matsumura <https://orcid.org/0000-0002-6906-0103>
Takashi Onaka <https://orcid.org/0000-0002-8234-6747>
Sarah Sadavoy <https://orcid.org/0000-0001-7474-6874>
Yoshito Shimajiri <https://orcid.org/0000-0001-9368-3143>
Mehrnoosh Tahani <https://orcid.org/0000-0001-8749-1436>
Kohji Tomisaka <https://orcid.org/0000-0003-2726-0892>
Chakali Eswaraiah <https://orcid.org/0000-0003-4761-6139>
Patrick M. Koch <https://orcid.org/0000-0003-2777-5861>
Kate Pattle <https://orcid.org/0000-0002-8557-3582>
Chang Won Lee <https://orcid.org/0000-0002-3179-6334>
Motohide Tamura <https://orcid.org/0000-0002-6510-0681>
David Berry <https://orcid.org/0000-0001-6524-2447>

Tao-Chung Ching <https://orcid.org/0000-0001-8516-2532>
Jihye Hwang <https://orcid.org/0000-0001-7866-2686>
Woojin Kwon <https://orcid.org/0000-0003-4022-4132>
Archana Soam <https://orcid.org/0000-0002-6386-2906>
Jia-Wei Wang <https://orcid.org/0000-0002-6668-974X>
Shih-Ping Lai <https://orcid.org/0000-0001-5522-486X>
Keping Qiu <https://orcid.org/0000-0002-5093-5088>
Derek Ward-Thompson <https://orcid.org/0000-0003-1140-2761>
Do-Young Byun <https://orcid.org/0000-0003-1157-4109>
Huei-Ru Vivien Chen <https://orcid.org/0000-0002-9774-1846>
Wen Ping Chen <https://orcid.org/0000-0003-0262-272X>
Zhiwei Chen <https://orcid.org/0000-0003-0849-0692>
Jungyeon Cho <https://orcid.org/0000-0003-1725-4376>
Antonio Chrysostomou <https://orcid.org/0000-0002-9583-8644>
Eun Jung Chung <https://orcid.org/0000-0003-0014-1527>
Pham Ngoc Diep <https://orcid.org/0000-0002-2808-0888>
Lapo Fanciullo <https://orcid.org/0000-0001-9930-9240>
Erica Franzmann <https://orcid.org/0000-0003-2142-0357>
Per Friberg <https://orcid.org/0000-0002-8010-8454>
Gary Fuller <https://orcid.org/0000-0001-8509-1818>
Tim Gledhill <https://orcid.org/0000-0002-2859-4600>
Sarah F. Graves <https://orcid.org/0000-0001-9361-5781>
Jane S. Greaves <https://orcid.org/0000-0002-3133-413X>
Qilao Gu <https://orcid.org/0000-0002-2826-1902>

Jennifer Hatchell  <https://orcid.org/0000-0002-4870-2760>
 Thiem Hoang  <https://orcid.org/0000-0003-2017-0982>
 Kazunari Iwasaki  <https://orcid.org/0000-0002-2707-7548>
 Il-Gyo Jeong  <https://orcid.org/0000-0002-5492-6832>
 Doug Johnstone  <https://orcid.org/0000-0002-6773-459X>
 Ji-hyun Kang  <https://orcid.org/0000-0001-7379-6263>
 Miju Kang  <https://orcid.org/0000-0002-5016-050X>
 Sung-ju Kang  <https://orcid.org/0000-0002-5004-7216>
 Akimasa Kataoka  <https://orcid.org/0000-0003-4562-4119>
 Koji S. Kawabata  <https://orcid.org/0000-0001-6099-9539>
 Francisca Kemper  <https://orcid.org/0000-0003-2743-8240>
 Gwanjeong Kim  <https://orcid.org/0000-0003-2011-8172>
 Kee-Tae Kim  <https://orcid.org/0000-0003-2412-7092>
 Kyoung Hee Kim  <https://orcid.org/0000-0001-9597-7196>
 Mi-Ryang Kim  <https://orcid.org/0000-0002-1408-7747>
 Shinyoung Kim  <https://orcid.org/0000-0001-9333-5608>
 Jason M. Kirk  <https://orcid.org/0000-0002-4552-7477>
 Masato I. N. Kobayashi  <https://orcid.org/0000-0003-3990-1204>
 Takayoshi Kusune  <https://orcid.org/0000-0002-9218-9319>
 Jungmi Kwon  <https://orcid.org/0000-0003-2815-7774>
 Kevin Lacaille  <https://orcid.org/0000-0001-9870-5663>
 Chin-Fei Lee  <https://orcid.org/0000-0002-3024-5864>
 Jeong-Eun Lee  <https://orcid.org/0000-0003-3119-2087>
 Sang-Sung Lee  <https://orcid.org/0000-0002-6269-594X>
 Di Li  <https://orcid.org/0000-0003-3010-7661>
 Hua-bai Li  <https://orcid.org/0000-0003-2641-9240>
 Hong-Li Liu  <https://orcid.org/0000-0003-3343-9645>
 Junhao Liu  <https://orcid.org/0000-0002-4774-2998>
 Sheng-Yuan Liu  <https://orcid.org/0000-0003-4603-7119>
 Tie Liu  <https://orcid.org/0000-0002-5286-2564>
 A-Ran Lyo  <https://orcid.org/0000-0002-9907-8427>
 Brenda C. Matthews  <https://orcid.org/0000-0003-3017-9577>
 Gerald H. Moriarty-Schieven  <https://orcid.org/0000-0002-0393-7822>
 Tetsuya Nagata  <https://orcid.org/0000-0001-9264-9015>
 Fumitaka Nakamura  <https://orcid.org/0000-0001-5431-2294>

Nagayoshi Ohashi  <https://orcid.org/0000-0003-0998-5064>
 Geumsook Park  <https://orcid.org/0000-0001-8467-3736>
 Harriet Parsons  <https://orcid.org/0000-0002-6327-3423>
 Tae-Soo Pyo  <https://orcid.org/0000-0002-3273-0804>
 Lei Qian  <https://orcid.org/0000-0003-0597-0957>
 Ramprasad Rao  <https://orcid.org/0000-0002-1407-7944>
 Mark G. Rawlings  <https://orcid.org/0000-0002-6529-202X>
 John Richer  <https://orcid.org/0000-0002-9693-6860>
 Andrew Rigby  <https://orcid.org/0000-0002-3351-2200>
 Giorgio Savini  <https://orcid.org/0000-0003-4449-9416>
 Anna M. M. Scaife  <https://orcid.org/0000-0002-5364-2301>
 Hiroko Shinnaga  <https://orcid.org/0000-0001-9407-6775>
 Ya-Wen Tang  <https://orcid.org/0000-0002-0675-276X>
 Yusuke Tsukamoto  <https://orcid.org/0000-0001-6738-676X>
 Serena Viti  <https://orcid.org/0000-0001-8504-8844>
 Hongchi Wang  <https://orcid.org/0000-0003-0746-7968>
 Hsi-Wei Yen  <https://orcid.org/0000-0003-1412-893X>
 Hyunju Yoo  <https://orcid.org/0000-0002-8578-1728>
 Jinghua Yuan  <https://orcid.org/0000-0001-8060-3538>
 Hyeong-Sik Yun  <https://orcid.org/0000-0001-6842-1555>
 Chuan-Peng Zhang  <https://orcid.org/0000-0002-4428-3183>
 Yapeng Zhang  <https://orcid.org/0000-0002-5102-2096>
 Jianjun Zhou  <https://orcid.org/0000-0003-0356-818X>
 Philippe André  <https://orcid.org/0000-0002-3413-2293>
 Stewart P. S. Eyres  <https://orcid.org/0000-0002-6663-7675>
 Sam Falle  <https://orcid.org/0000-0002-9829-0426>
 Sven van Loo  <https://orcid.org/0000-0003-4746-8500>

References

- Alves, F. O., Acosta-Pulido, J. A., Girart, J. M., Franco, G. A. P., & López, R. 2011, *AJ*, 142, 33
- Goodman, A. A., Bastien, P., Myers, P. C., & Ménard, F. 1990, *ApJ*, 359, 363
- Planck Collaboration, Aghanim, N., Akrami, Y., et al. 2020, *A&A*, 641, A12
- Sandell, G., & Knee, L. B. G. 2001, *ApJL*, 546, L49
- Tamura, M., Yamashita, T., Sato, S., Nagata, T., & Gatley, I. 1988, *MNRAS*, 231, 445
- Zari, E., Lombardi, M., Alves, J., Lada, C. J., & Bouy, H. 2016, *A&A*, 587, A106