

## Central Lancashire Online Knowledge (CLoK)

Title	COVID-19 Is Associated With a 4 Fold Increase in 30-day Mortality Risk in Hip Fracture Patients in the United Kingdom: A Systematic Review and Meta-analysis
Type	Article
URL	<a href="https://clock.uclan.ac.uk/id/eprint/41925/">https://clock.uclan.ac.uk/id/eprint/41925/</a>
DOI	<a href="https://doi.org/10.1177/21514593221099375">https://doi.org/10.1177/21514593221099375</a>
Date	2022
Citation	Mastan, Saleem, Hodhody, Ghazal, Sajid, Mohammed, Malik, Rayaz and Charalambous, Charalambos Panayiotou (2022) COVID-19 Is Associated With a 4 Fold Increase in 30-day Mortality Risk in Hip Fracture Patients in the United Kingdom: A Systematic Review and Meta-analysis. Geriatric Orthopaedic Surgery & Rehabilitation, 13. ISSN 2151-4585
Creators	Mastan, Saleem, Hodhody, Ghazal, Sajid, Mohammed, Malik, Rayaz and Charalambous, Charalambos Panayiotou

It is advisable to refer to the publisher's version if you intend to cite from the work.  
<https://doi.org/10.1177/21514593221099375>

For information about Research at UCLan please go to <http://www.uclan.ac.uk/research/>

All outputs in CLoK are protected by Intellectual Property Rights law, including Copyright law. Copyright, IPR and Moral Rights for the works on this site are retained by the individual authors and/or other copyright owners. Terms and conditions for use of this material are defined in the <http://clock.uclan.ac.uk/policies/>

# COVID-19 Is Associated With a 4 Fold Increase in 30-day Mortality Risk in Hip Fracture Patients in the United Kingdom: A Systematic Review and Meta-analysis

Geriatric Orthopaedic Surgery  
& Rehabilitation  
Volume 13: 1–9  
© The Author(s) 2022  
Article reuse guidelines:  
[sagepub.com/journals-permissions](https://sagepub.com/journals-permissions)  
DOI: 10.1177/21514593221099375  
[journals.sagepub.com/home/gos](https://journals.sagepub.com/home/gos)  
SAGE

Saleem Mastan, MBChB, MRCS, MSc<sup>1</sup> , Ghazal Hodhody, MBChB, MRCS, MSc<sup>1</sup>, Mohammed Sajid, MBChB, MRCS<sup>1</sup>, Rayaz Malik, MBChB, PhD<sup>2,3</sup>, and Charalambos Panayiotou Charalambous, BSc, MBChB, MSc, MD, FRCS(Tr&Orth)<sup>4,5</sup>

## Abstract

**Background:** Hip fracture in elderly patients is associated with a significant mortality which may be worsened by COVID-19 infection. **Objective:** To undertake a systematic review and meta-analysis of studies assessing the effect of COVID-19 infection and mortality rates in hip fracture patients in the United Kingdom (UK) during the first surge of the pandemic. **Design:** A systematic literature search of 9 online databases was undertaken independently by 2 reviewers using the Cochrane methodology for systematic reviews. Eligibility criteria were any study of an adult population with a hip fracture that assessed the relationship between COVID-19 infection and 30-day mortality in the UK. Meta-analysis was conducted using a random-effects model. **Results:** Out of 309 identified articles, 10 studies reporting on 2448 hip fracture patients met the inclusion criteria. Meta-analysis showed that the estimated mortality rate in patients with laboratory confirmed COVID-19 infection was 32.5% (95% CI= 28.3 to 37.0) compared to 8.6% (95% CI= 6.3 to 11.6) in COVID-19 negative patients. Meta-analysis of 9 comparative studies showed a significantly higher mortality in patients with laboratory confirmed COVID-19 infection as compared to patients without (RR=3.937, 95% CI= 2.867 to 5.406, P<.001). Similar findings were obtained when comparing mortality in COVID-19 laboratory confirmed or clinically suspected infected vs non-infected patients (RR=4.576, 95% CI = 3.589 to 5.835, P<.001). **Conclusions:** COVID-19 infection is associated with a 4-fold increase in mortality risk in hip fracture patients. Every effort should be made to avoid COVID-19 infection and nosocomial exposure in this highly vulnerable patient group.

## Keywords

Covid-19 , Hip fracture, Mortality, Meta-analysis

## Introduction

Infection with COVID-19 is associated with high mortality rates, especially in elderly male patients with comorbidities such as diabetes, hypertension, cardiovascular and respiratory disease.<sup>1</sup> Similarly, in the pre-COVID-19 era, a higher mortality in hip fracture patients has been associated with older age, male gender, dementia, cardiovascular disease, renal disease and malignancy.<sup>2</sup>

<sup>1</sup>Health Education North West, UK

<sup>2</sup>Weill Cornell Medicine-Qatar, Qatar

<sup>3</sup>University of Manchester, UK

<sup>4</sup>School of Medicine, University of Central Lancashire, UK

<sup>5</sup>Blackpool Teaching Hospitals NHS Trust, UK

### Corresponding Author:

Charalambos Panayiotou Charalambous, Professor of Orthopaedic Surgery, Blackpool Teaching Hospitals NHS Foundation Trust, Whinney heys Road, Blackpool FY3 8NR, UK.  
Email: [Mr.charalambous@nhs.net](mailto:Mr.charalambous@nhs.net)



Creative Commons Non Commercial CC BY-NC: This article is distributed under the terms of the Creative Commons Attribution-NonCommercial 4.0 License (<https://creativecommons.org/licenses/by-nc/4.0/>) which permits non-commercial use, reproduction and distribution of the work without further permission provided the original work is attributed as specified on the

SAGE and Open Access pages (<https://us.sagepub.com/en-us/nam/open-access-at-sage>).

In the UK, in recent years, there have been substantial improvements in hip fracture care and reduced mortality rates with the implementation of early orthogeriatric input, early surgery and prompt post-operative mobilisation. The National Hip Fracture Database (NHFD) collects data from 175 trauma units in England, Wales and Northern Ireland and since its inception in 2007 has demonstrated a steady decline in hip fracture mortality, with a 30-day mortality of 6.1-6.9% during 2016-2018.<sup>3</sup> Similarly, in Scotland, the Scottish Hip Fracture Audit (SHFA) reported a 7.7% 30-day mortality in 2019.<sup>4</sup>

The NHFD and SHFA has largely standardised care, enabling a more uniform assessment of the effect of COVID-19 on mortality. We have undertaken a systematic review and meta-analysis to assess the early mortality rate of hip fracture patients in the UK, with and without COVID-19 infection.

## Methods

A systematic literature search was performed following the Cochrane methodology for systematic reviews on 19<sup>th</sup> October 2020. The following bibliographic databases and COVID-19 resource sites were searched with no publication or language limit: Pubmed, EMBASE, CINAHL, CENTRAL (Cochrane Library), COVID-19 research database WHO, Lancet COVID-19 research centre, JAMA network, NEJM, COVID-19 Open Research Dataset Challenge. The November 2020 issues of the Bone and Joint Journals and Journal of Bone and Joint Surgery (Am) were also searched. The reference lists of included studies were examined for any additional studies. The search in all databases was performed with a combination of key-words “covid” and “fracture”.

### Inclusion Criteria

- Study design: Any study design
- Population: Patients with a hip fracture
- Comparators: COVID-19 infection (based on testing or clinical suspicion) vs no infection
- Outcomes: Studies reporting on “30-day” mortality

### Exclusion Criteria

- Case reports, reviews, editorials, commentaries, personal opinions, surveys and case series reporting on a total of less than 10 patients.

Based on the above eligibility criteria, 2 reviewers independently screened the titles and abstracts of all identified studies. Duplicates were removed. The full texts of studies considered eligible were independently

reviewed by the 2 reviewers. Any disagreements were discussed between the 2 reviewers and with a senior author.

### Data Extraction

Two reviewers independently extracted relevant data (demographics and outcomes) from the included studies. Any disagreements in the eligibility assessment or data extraction were discussed between the 2 reviewers and with a senior author if differences were still unresolved. Where further clarification of data was needed, the authors of the included studies were contacted.

The design methodology of each study was determined using the guidelines described by Mathes and Pieper.<sup>5</sup>

### Assessment of Methodological Quality of Studies

The methodological quality of the included studies was assessed using the Methodological Index for Non-Randomised Studies (MINORS criteria).<sup>6</sup>

### Statistical Analysis

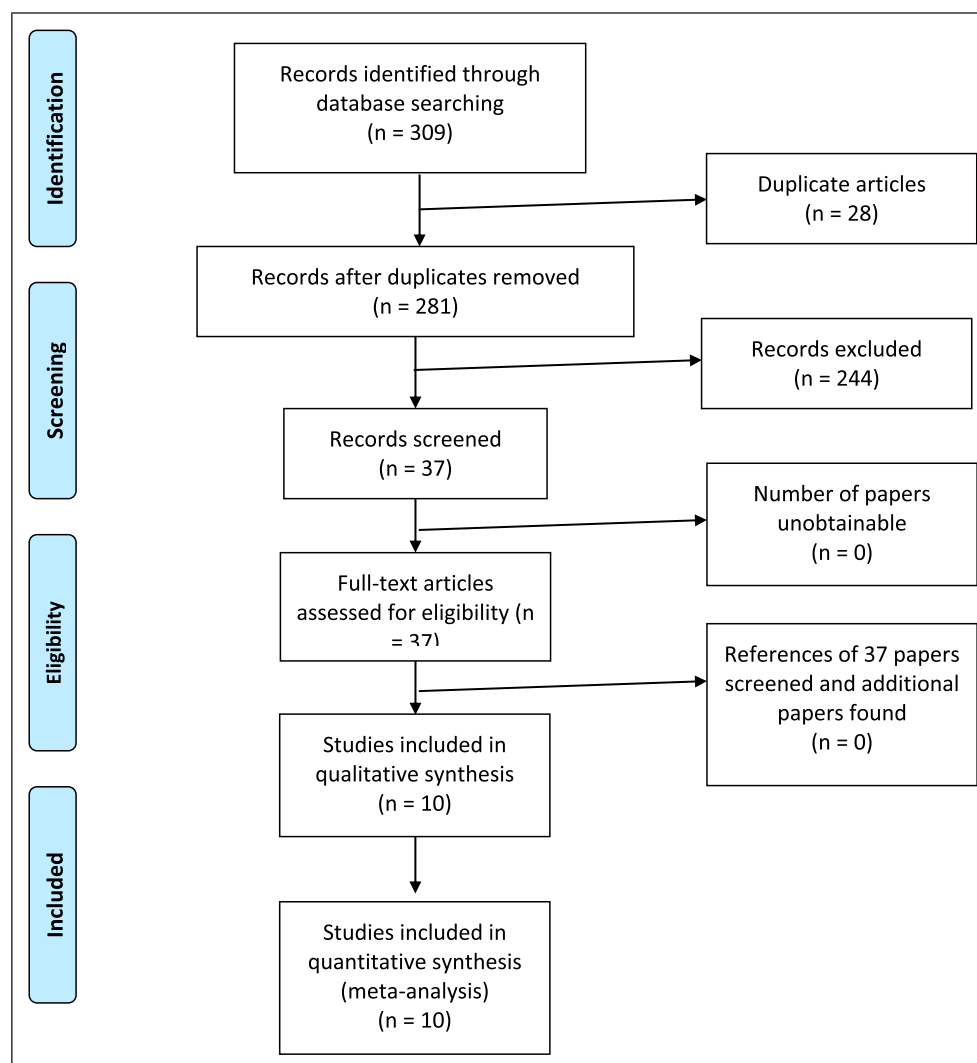
An initial descriptive analysis of the studies was performed, presenting study characteristics, populations and outcomes.

Meta-analysis was conducted using a random-effects model, due to the inherent heterogeneity encountered in clinical studies. Mortality rates, Risk Ratios (RRs) and 95% confidence intervals (CIs) were calculated and reported. Heterogeneity was assessed using  $\tau^2$ ,  $I^2$ , Q and P values. Funnel plots were plotted for the studies comparing mortality rates between groups with and without COVID-19 infection, and visual assessment of these funnel plots was undertaken to look for asymmetry. No formal testing for funnel plot asymmetry was performed due to the small number of studies analysed. Data were analysed with Comprehensive Meta-analysis version 2 (Biostat, Englewood, NJ, USA).

## Results

The search returned 309 articles, of which 28 were duplicates and 244 failed to meet the inclusion criteria and were excluded. Full-text review of the remaining 37 articles resulted in further exclusions. Ten studies including 2448 hip fracture patients met the inclusion criteria (Figure 1).<sup>7-16</sup>

The patient demographics for each study are shown in Tables 1, 2 and 3. All studies assessed mortality during the first surge of the pandemic, mainly in March and April of 2020 and included a wide regional distribution in the UK (Figure 2). The majority of patients were female. Nine studies compared mortality rates in COVID-19 infected patients vs COVID-19 non-infected patients, while 1 study



**Figure 1.** Flow diagram for meta-analysis.

**Table 1.** Demographic and treatment data.

Lead Author	Study Design	Sex	Age (Mean)	Asa (Median)	Study Period
Narang	Cohort	477 F/201M	NP	3	1/3/20 – 3/4/20
Dupley	Retrospective case series	35 F/29M	83	3	1/3/30 - 26/4/20
Karayannis	Retrospective cohort	138 F/65M	81.3	3	18/3/20 - 27/4/20
Thakrar	Prospective cohort	20 F/23M	81.6	NP	15/3/20 – 14/4/20
Malik-tabassum	Prospective cohort	43 F/25M	84.3	3	23/3/20 - 11/5/20
Kayani	Retrospective cohort	255 F/167M	72.5	3	1/02/20 – 20/04/20
Sobti	Prospective cohort	NP	83.5	NP	1/03/20 – 31/05/20
Hall	Retrospective cohort	211 F/106M	80.7	3	03/20
Ward	Retrospective cohort	96 F/36M	82.1	3	1/03/20 – 31/05/2020
Rasidovic	Retrospective and prospective cohort	281 F/123M	83.5	3	1/03/20 – 6/04/20

NP= information not provided.

**Table 2.** Fracture type and surgical management in included studies.

Author	Surgical Treatment/ Non-surgical	Intracapsular/Extracapsular/ Peri-Prosthetic	Surgical Fracture fixation/Arthroplasty	Time to Surgery
Narang	682	389/278/0	NP	N/A
Dupley	58	36/28/0	29/0	N/A
Karayiannis	203	NP	83/120	78 pts 33 pts 48 hours
Thakrar	43	NP/NP/4	23/20	51.2 hours (mean)
Malik-tabassum	66/2	44/24/0	26/40	21.8 hours (mean)
Kayani	422	332/90/0	144/278	72 hours (mean)
Sobti	94	NP	NP	N/A
Hall	303	NP	NP	N/A
Ward	127/5	73/49/0	55/62	N/A
Rasidovic	391	189/106/0	216/173 +3-unknown	35.0 hours (mean)

N/A= Not applicable NP= information not provided.

**Table 3.** Definitions of 30-day mortality and of clinical suspicion of COVID-19 status.

Author	Reference of 30 day Mortality	Definition of Suspected Negative	Definition of Suspected Positive
Narang	From hospital admission	N/A	N/A
Dupley	From fracture	NP	N/A
Karayiannis	From surgery	NP	Positive imaging findings – PA chest radiograph, CT chest
Thakrar	NP	Absence of clinical symptoms	Clinical signs/symptoms of respiratory infection, diagnostic investigation results supportive of COVID-19 illness
Malik-tabassum	NP	Asymptomatic	Respiratory symptoms
Kayani	From surgery	N/A	N/A
Sobti	NP	Asymptomatic	N/A
Hall	From hospital admission	N/A	N/A
Ward	From fracture	N/A	Clinically suspected COVID-19
Rasidovic	From surgery	Did not meet PHE guidelines for testing	Suspected clinical signs or symptoms of COVID-19, and/or imaging (plain radiograph/CT)

N/A= Not applicable (all cases were swabbed), NP= information not provided.

reported mortality in COVID-19 infected patients only. The majority of patients suffered an intra-capsular fracture and the most common modality of treatment was a hemiarthroplasty. All studies assessed “30-day” mortality, but this varied in relation to duration with some using the date of fracture occurrence, date of hospital admission or date of surgery. Included articles also varied with regard to the clinical parameters used to evaluate the presence or absence of COVID-19 infection (Table 3). Mortality rates for each included study are presented in Table 4.

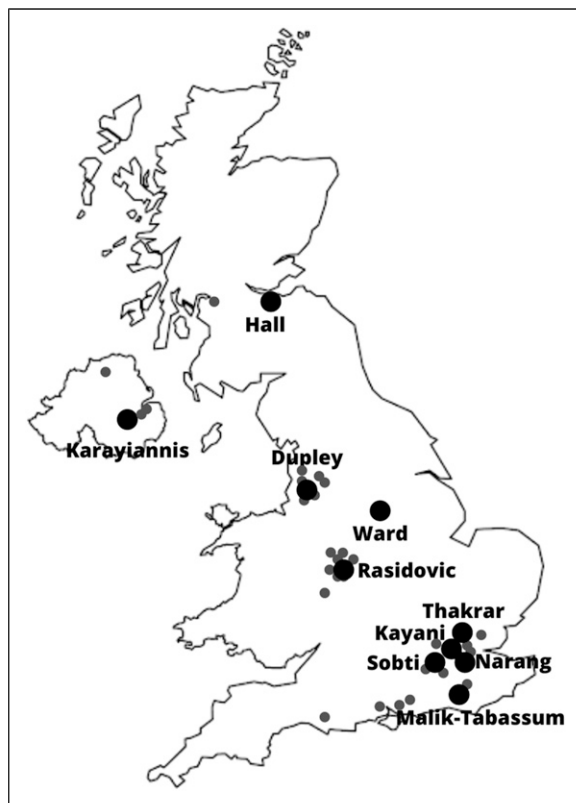
### Mortality

Meta-analysis showed that the estimated overall mortality rate in patients with COVID-19 infection (laboratory confirmed with a positive oropharyngeal or nasopharyngeal swab test with real-time reverse transcription polymerase chain

reaction (RT-PCR)) was 32.5% (95% CI= 28.3 to 37.0, heterogeneity  $\tau^2=.00$ ,  $I^2=.00$ ,  $Q=3.25$ ,  $P=.92$ ) and was higher than the estimated mortality rate in patients without COVID-19 infection with a mortality rate of 8.6% (95% CI= 6.3 to 11.6, heterogeneity  $\tau^2=.13$ ,  $I^2=58.71$ ,  $Q=19.38$ ,  $P=.01$ ). Mortality rates were similar when COVID-19 diagnosis was based on laboratory testing or clinical suspicion - 33.1%, (95% CI= 28.9 to 37.5, heterogeneity  $\tau^2=.00$ ,  $I^2=.00$ ,  $Q=3.41$ ,  $P=.91$ ) vs 7.4% (95% CI= 5.8 to 9.4, heterogeneity  $\tau^2=.06$ ,  $I^2=44.27$ ,  $Q=14.35$ ,  $P=.07$ ).

Meta-analysis of the 9 studies that directly compared mortality rates showed that COVID-19 infection (based on laboratory RT-PCR testing) was associated with a higher mortality risk compared with no infection, with an estimated RR of 3.937 (95% CI= 2.867 to 5.406,  $P<.001$ , heterogeneity  $\tau^2=.08$ ,  $I^2=35.61$ ,  $Q=12.42$ ,  $P=.13$ ). This

was similar when COVID-19 diagnosis was based on laboratory testing or clinical suspicion (RR=4.576, 95% CI = 3.589 to 5.835,  $P < .001$ , heterogeneity  $\tau^2=.02$ ,  $I^2=13.08$ ,  $Q=9.20$ ,  $P=.33$ ). (Figures 3 and 4)



**Figure 2.** Location of the hip fracture hospitals described in the included studies. (larger markers represent the hospital of the lead author and the smaller markers represent other units included in each multicentre study).

Funnel plot analysis did not show a small study effect for the studies comparing laboratory confirmed cases but suggested a small study effect for studies that combined laboratory testing and clinical suspicion.

### Assessment of Methodological Quality of Included Studies

The MINORS assessment for bias showed a median score of 12 (range 11-14) (Table 5).

### Discussion

We show that the first surge of the pandemic COVID-19 infection was associated with a high mortality rate of about 33%, and an estimated 4-fold increase in 30-day mortality risk in hip fracture patients in the UK.

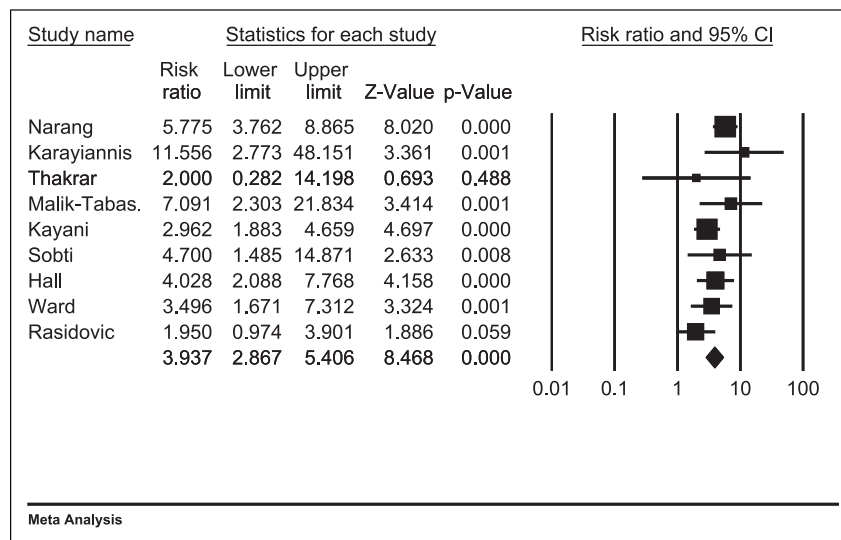
It was reassuring that the early mortality rate in non-COVID-19 hip fracture patients in our meta-analysis was estimated at 8.6% which is only marginally higher compared to the 30-day mortality of 6.1% in the NHFD and 7.7% in the SHFA reported in 2019.<sup>3,4</sup> This may suggest that although systemic changes in the provision of care could be related to the observed increased mortality, COVID-19 infection per se was the major contributor.

In the UK, the overall mortality rate of patients with a confirmed laboratory test for COVID-19 is reported as .8%.<sup>17</sup> The mortality of patients admitted to hospital with symptomatic COVID-19 infection during the first surge of the pandemic in the UK was about 33%.<sup>18</sup> Whilst, the hip fracture patients included in this study were admitted to hospital due to their fracture, and COVID-19 may have been an incidental finding, they had a similar mortality rate. This would suggest that hip fracture patients are a

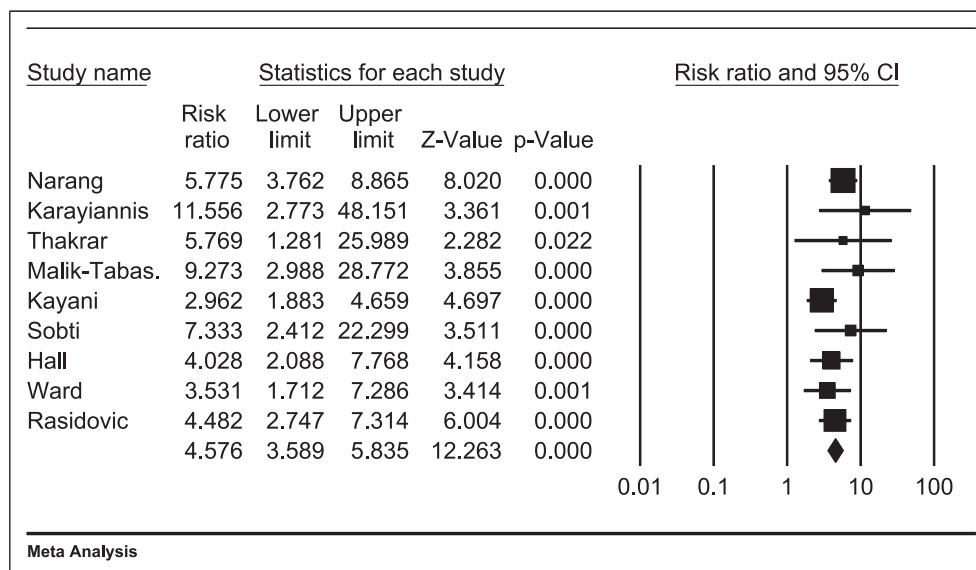
**Table 4.** Summary of mortality rates in included studies.

Author	Mortality of Swab Positive and Suspected Positive Cases (Mortality/Total Cases)	Mortality of Swab Positive Cases (Mortality/Total Cases)	Mortality of Swab Negative and Suspected Negative Cases (Mortality/Total Cases)	Mortality of Swab Negative Cases (Mortality/Total Cases)	COVID-19 Reported Cause of Death/Total Deaths in COVID-19 Infected Cases
Narang	34.9% (30/86)	34.9% (30/86)	6.0% (36/596)	6.0% (36/596)	NP
Dupley	32.8% (21/64)	32.8% (21/64)	N/A	N/A	NP
Karayiannis	19.0% (4/21)	19.0% (4/21)	1.6% (3/182)	1.6% (3/182)	2/4
Thakrar	38.4% (5/13)	33.3% (4/12)	6.7% (2/30)	1.7% (1/6)	4/5
Malik-Tabassum	100% (1/1)	100% (1/1)	7.5% (5/67)	9.8% (5/51)	NP
Kayani	30.4% (25/82)	30.4% (25/82)	10.2% (35/340)	10.2% (35/340)	NP
Sobti	50% (3/6)	50% (3/6)	6.8% (6/88)	10.6% (5/47)	NP
Hall	33.3% (9/27)	33.3% (9/27)	8.3% (24/290)	8.3% (24/290)	NP
Ward	37.0% (17/46)	36.5% (15/41)	10.5% (9/86)	10.5% (9/86)	14/17
Rasidovic	32.4% (37/114)	31.2% (34/109)	7.2% (21/290)	16% (8/50)	NP

N/A= Not applicable.



**Figure 3.** Meta-analysis of studies comparing laboratory confirmed COVID-19 infected vs non-infected patients.



**Figure 4.** Meta-analysis of studies comparing laboratory confirmed or clinically suspected COVID-19 infected vs non-infected patients.

highly vulnerable group with regards to the effects of COVID-19 infection in the perioperative period.

Our reported relative risk is lower than the results of a recent international meta-analysis which reported a 7-fold increase in mortality risk in patients with hip fracture and COVID-19 as compared to non-infected patients. However, the authors of that study, did not define the duration of follow up with regards to mortality, and only included 4 studies in their analysis with just 1 study from the UK.<sup>19</sup>

Delays to surgery has been linked to increased mortality in hip fracture patients,<sup>20,21</sup> hence timing to surgery for hip

fracture is a main performance indicator for NHS services in the UK. The NHFD gather data on the timing of surgery from first presentation with a hip fracture to hospital. In the NHFD 69% of patients in 2018 had surgery on the same day or on the day following injury.<sup>3</sup> The average wait for surgery was 33.1 hours in 2017 and 2018. Similarly, in 2019, in the SHFA, 72% of hip fracture patients had surgery within 36 hours of admission.<sup>4</sup> In our meta-analysis, time to surgery was available for 5 studies, which seemed similar to that achieved in the pre-COVID-19 hip fracture databases.



**Table 5.** Minors Criteria assessing validity of each non-randomised trial.

Author	1. A Stated Aim of the Study	2. Inclusion of Consecutive Patients	3. Prospective Collection of Data	4. Endpoint Appropriate to the Study Aim	5. Unbiased Evaluation of Endpoints	6. Follow-Up Period Appropriate to the Major Endpoint	7. Loss to Follow up Not Exceeding 5%	Total
Narang	2	2	2	2	2	2	2	14
Dupley	2	1	0	2	2	2	2	11
Karayiannis	2	2	0	2	2	2	2	12
Thakrar	2	2	2	2	2	2	2	14
Malik-tabassum	2	2	2	2	2	2	2	12
Kayani	2	2	0	2	2	2	2	12
Sobti	2	1	2	2	2	2	2	13
Hall	2	2	0	2	2	2	2	12
Ward	2	1	0	2	2	2	2	11
Rasidovic	2	0	1	2	2	2	2	13

Several possible reasons may explain the increased mortality observed in our meta-analysis, including the enhanced coagulopathy in COVID-19,<sup>22</sup> combined with reduced mobility associated with hip fractures which may increase the risk of venous thromboembolism and disseminated intravascular coagulation. Anticoagulation in patients with more severe COVID-19 infection has been associated with reduced mortality.<sup>23</sup> The hip fracture and associated surgery per-se may also induce the release of inflammatory cytokines which may potentiate COVID-19 induced inflammation<sup>24</sup> leading to cytokine storm, acute respiratory distress syndrome and multi-organ failure.<sup>25</sup> Of course several factors including older age, obesity, diabetes and cardiovascular disease commonly co-exist in patients with hip fracture and are associated with increased mortality of COVID-19.<sup>26,27</sup> In line with this, Mi et al looked at 10 patients with a fracture and symptomatic COVID-19 in the Hubei province in China. They reported lymphopenia ( $<1.0 \times 10^9$  cells/L) in 6 of 10 cases, and high D-dimer and C-reactive protein levels in 9. Four of their patients died within 2 weeks of admission. They concluded that the clinical characteristics and early prognosis of COVID-19 in patients with a fracture tended to be more severe than those reported for patients with COVID-19 without fracture and that surgical treatment should be carried out cautiously or non-surgical care should be chosen for such patients.<sup>28</sup>

Given the markedly increased mortality in patients with COVID-19 and hip fracture, every effort should be made to avoid nosocomial COVID-19 infection. Ward et al reported that only 19.6% of their COVID-19 infected hip fracture patients had symptoms on admission and the timing of diagnosis for most of their patients (60.8%) suggested nosocomial infection.<sup>14</sup> Kayani et al<sup>12</sup> reported that about 50% of their COVID-19 cases had a negative swab on admission, suggesting a subsequent nosocomial infection. Heneghan

et al<sup>29</sup> estimated at around 17.6% of COVID-19 hospitalised cases in England fit the definition as being hospital acquired. In a recent study we have shown substantial deficiencies in the measures adopted to limit nosocomial COVID-19 infection in hip fracture patients in hospitals in the North West of England.<sup>30</sup> Public Health England (PHE) published guidelines for hospital care with high, medium and low COVID-19 risk pathways.<sup>31</sup> Acute hip fracture patients would qualify as high risk patients and therefore should be nursed in a single room or specific area until their laboratory test results is known.

The proportion of COVID-19 cases reported in the included studies varied substantially. Karayiannis et al showed that 10.4% of their hip fracture patients were COVID-19 positive,<sup>9</sup> whereas in the study by Kayani<sup>12</sup> at the proportion was almost double at 19.4%. This may be due to different rates of community prevalence in the country regions examined, or due to different rates of nosocomial infection. Hall et al compared patients who were COVID-19 infected on admission vs those who became infected post-surgery and did not find any difference in mortality, suggesting that both groups are similarly exposed to the detrimental effects of COVID-19 infection.<sup>14</sup>

This meta-analysis has certain limitations, including the retrospective nature of some of the studies and their heterogeneity with regards to the reference time point of the 30-day mortality and definition of the COVID-19 status. Similarly, time to surgery was not clearly defined in our included studies. The limited information in the publications did not allow us to identify subgroups of hip fracture patients with more severe COVID-19 infection or determine the cause of death in patients with COVID-19. Nevertheless, despite these limitations we feel that our findings, through the meta-analysis of multiple studies carried out in the UK, where hip fracture care is highly



standardised, are robust enough to guide management of this fracture group.

In conclusion, COVID-19 infection in hip fracture patients in the UK is associated with a 4-fold increase in mortality risk. Every effort should be made to minimise infection with COVID-19 in this highly vulnerable group.

### Declaration of conflicting interests

The author(s) declared no potential conflicts of interest with respect to the research, authorship, and/or publication of this article.

### Funding

The author(s) received no financial support for the research, authorship, and/or publication of this article.

### ORCID iD

Saleem Mastan  <https://orcid.org/0000-0002-1459-7456>

### References

1. Zhou F, Yu T, Du R, et al. Clinical course and risk factors for mortality of adult inpatients with COVID-19 in Wuhan, China: a retrospective cohort study. *Lancet*. 2020;395(10229):1054-1062. doi:10.1016/S0140-6736(20)30566-3.
2. Liu Y, Wang Z, Xiao W. Risk factors for mortality in elderly patients with hip fractures: a meta-analysis of 18 studies. *Aging Clin Exp Res*. 2018;30(4):323-330. doi:10.1007/s40520-017-0789-5.
3. *Annual Report 2019, National Hip Fracture Database*. Royal College of Physicians. 2019. [https://www.nhfd.co.uk/files/2019ReportFiles/NHFD\\_2019\\_Annual\\_Report\\_v101.pdf](https://www.nhfd.co.uk/files/2019ReportFiles/NHFD_2019_Annual_Report_v101.pdf). (accessed 23/11/2020).
4. *Scottish Standards for Care of Hip Fracture Patients*. Scottish Government. 2019. <https://www.shfa.scot.nhs.uk/docs/2019/Scottish-standards-of-care-for-hip-fracture-patients-2019.pdf>. (accessed 23/11/2020).
5. Mathes T, Pieper D. Clarifying the distinction between case series and cohort studies in systematic reviews of comparative studies: potential impact on body of evidence and workload. *BMC Med Res Methodol*. 2017;17:107. doi:10.1186/s12874-017-0391-8.
6. Slim K, Nini E, Forestier D, Kwiatkowski F, Panis Y, Chipponi J. Methodological index for non-randomized studies (MINORS): development and validation of a new instrument. *ANZ J Surg*. 2003;73(9):712-716. doi:10.1046/j.1445-2197.2003.02748.x.
7. Narang A, Chan G, Aframian A, et al. Thirty-day mortality following surgical management of hip fractures during the COVID-19 pandemic: findings from a prospective multi-centre UK study. *Int Orthop*. 2020;45:1-9. doi: 10.1007/s00264-020-04739-y.
8. Dupley L, Oputa TJ, Bourne JT, et al. 30-day mortality for fractured neck of femur patients with concurrent COVID-19 infection. *Eur J Orthop Surg Traumatol*. 2020;31:341-347. doi:10.1007/s00590-020-02778-0.
9. Karayiannis PN, Roberts V, Cassidy R, et al. 30-day mortality following trauma and orthopaedic surgery during the peak of the COVID-19 pandemic. *Bone & Joint Open*. 2020;1(7):392-397. doi:10.1302/2633-1462.17.BJO-2020-0075.R1.
10. Thakrar A, Chui K, Kapoor A, Hambidge J. Thirty-Day Mortality Rate of Patients With Hip Fractures During the COVID-19 Pandemic: A Single Centre Prospective Study in the United Kingdom. *J Orthop Trauma*. 2020;34(9):e325-e329. doi:10.1097/BOT.0000000000001889.
11. Malik-Thabassum K, Crook M, Robertson A, To C, Maling L, Selmon G. Management of hip fractures during the COVID-19 pandemic at a high-volume hip fracture unit in the United Kingdom. *J Orthop*. 2020;20:332-337doi:10.1016/j.jor.2020.06.018.
12. Kayani B, Onochie E, Patil V, et al. The effects of COVID-19 on perioperative morbidity and mortality in patients with hip fractures. *The Bone & Joint Journal*. 2020;102-B(9):1136-1145. doi:10.1302/0301-620X.102B9.BJJ-2020-1127.R1.
13. Sobti A, Memon K, Bhaskar RRP, Unnithan A, Khaleel A. Outcome of trauma and orthopaedic surgery at a UK District General Hospital during the COVID-19 pandemic. *Journal of clinical orthopaedics and trauma*. 2020;11:S442-S445. doi:10.1016/j.jcot.2020.06.042.
14. Hall AJ, Clement ND, Farrow L, et al. IMPACT-Scot report on COVID-19 and hip fractures. *The Bone & Joint Journal*. 2020;102-B:1219-1228. doi:10.1302/0301-620X.102B9.BJJ-2020-1100.R1.
15. Ward AE, Tadross D, Wells F, et al. The impact of COVID-19 on morbidity and mortality in neck of femur fracture patients: a prospective case-control cohort study. *Bone & joint open*. 2020;1:669-675. doi:10.1302/2633-1462.111.
16. Rasidovic D, Ahmed I, Thomas C, et al. Impact of COVID-19 on clinical outcomes for patients with fractured hip: a multicentre observational cohort study. *Bone & joint open*. 2020;1:697-705. doi:10.1302/2633-1462.111.
17. Colbourn T. Unlocking UK COVID-19 policy. *Lancet Public Health*. 2020;5:e362-e363doi:10.1016/S2468-2667(20)30135-3.
18. Docherty A, Harrison E, Green C, et al. features of 16,749 hospitalised UK patients with COVID-19 using the ISARIC WHO Clinical Characterisation Protocol. *medRxiv*. 2020. doi:10.1101/2020.04.23.20076042.
19. Lim MA, Pranata R. Coronavirus disease 2019 (COVID-19) markedly increased mortality in patients with hip fracture - A systematic review and meta-analysis. *Journal of Clinical Orthopaedics and Trauma*. 2021;12:187-193. doi:10.1016/j.jcot.2020.09.015.
20. Klestil T, Röder C, Stotter C, et al. Impact of timing of surgery in elderly hip fracture patients: a systematic review

- and meta-analysis. *Sci Rep*. 2018;8(1):13933. doi:[10.1038/s41598-018-32098-7](https://doi.org/10.1038/s41598-018-32098-7).
21. Moja L, Piatti A, Pecoraro V, et al. Timing matters in hip fracture surgery: patients operated within 48 hours have better outcomes. A meta-analysis and meta-regression of over 190,000 patients. *PLoS One*. 2012;7(10):e46175. doi: [10.1371/journal.pone.0046175](https://doi.org/10.1371/journal.pone.0046175).
  22. Yin S, Huang M, Li D, Tang N. Difference of coagulation features between severe pneumonia induced by SARS-CoV2 and non-SARS-CoV2. *J Thromb Thrombolysis*. 2020;51:1107-1110. doi: [10.1007/s11239-020-02105-8](https://doi.org/10.1007/s11239-020-02105-8).
  23. Tang N, Bai H, Chen X, Gong J, Li D, Sun Z. Anticoagulant treatment is associated with decreased mortality in severe coronavirus disease 2019 patients with coagulopathy. *J Thromb Haemostasis*. 2020;18:1094-1099doi:[10.1111/jth.14817](https://doi.org/10.1111/jth.14817).
  24. Huang I, Pranata R, Lim MA, Oehadian A, Alisjahbana B. C-reactive protein, procalcitonin, D-dimer, and ferritin in severe coronavirus disease-2019: a meta-analysis. *Ther Adv Respir Dis*. 2020;14:1753466620937175.
  25. Lim MA, Pranata R, Huang I, Yonas E, Soeroto AY, Supriyadi R. Multiorgan Failure With Emphasis on Acute Kidney Injury and Severity of COVID-19: Systematic Review and Meta-Analysis. *Canadian journal of kidney health and disease*. 2020;7:2054358120938573.
  26. Smati S, Tramunt B, Wargny M, et al. Relationship between obesity and severe COVID -19 outcomes in patients with type 2 diabetes: Results from the CORONADO study. *Diabetes Obes Metabol*. 2020;23:391-403. doi:[10.1111/dom.14228](https://doi.org/10.1111/dom.14228).
  27. Cariou B, Hadjadj S, Wargny M, et al. Phenotypic characteristics and prognosis of inpatients with COVID-19 and diabetes: the CORONADO study. *Diabetologia*. 2020; 63(8):1500-1515.
  28. Mi B, Chen L, Xiong Y, Xue H, Zhou W, Liu G. Characteristics and Early Prognosis of COVID-19 Infection in Fracture Patients. *J Bone Joint Surg*. 2020;102(9):750-758.
  29. Heneghan C, Howdon DJ. *The Centre for Evidence-Based Medicine*; 2020. Available: <https://www.cebm.net/COVID-19/the-ongoing-problem-of-hospital-acquired-infections-across-the-uk/>. accessed 23/11/2020. The Ongoing Problem of UK Hospital Acquired Infections
  30. Mastan S, Cash T, Malik RA, et al. Limited implementation of measures to reduce nosocomial spread of COVID-19 in hip-fracture patients in the North West of England. *J Hosp Infect*. 2021;108:90-93. doi:[10.1016/j.jhin.2020.11.007](https://doi.org/10.1016/j.jhin.2020.11.007).
  31. Public Health England. *COVID-19: Guidance for the Remobilisation of Services within Health and Care Settings. Infection Prevention and Control Recommendations*; 2020. [https://assets.publishing.service.gov.uk/government/uploads/system/uploads/attachment\\_data/file/910885/COVID-19\\_Infection\\_prevention\\_and\\_control\\_guidance\\_FINAL\\_PDF\\_20082020.pdf](https://assets.publishing.service.gov.uk/government/uploads/system/uploads/attachment_data/file/910885/COVID-19_Infection_prevention_and_control_guidance_FINAL_PDF_20082020.pdf). accessed 23/11/2020.