

Central Lancashire Online Knowledge (CLOK)

Title	The Herschel Exploitation of Local Galaxy Andromeda (HELGA). VI. The distribution and properties of molecular cloud associations in M31
Type	Article
URL	https://clock.uclan.ac.uk/id/eprint/11303/
DOI	https://doi.org/10.1088/0004-637X/798/1/58
Date	2014
Citation	Kirk, Jason Matthew, Gear, W K, Fritz, J, Smith, M W L, Ford, G, Baes, M, Bendo, G J, De Looze, I, Eales, Steve et al (2014) The Herschel Exploitation of Local Galaxy Andromeda (HELGA). VI. The distribution and properties of molecular cloud associations in M31. The Astrophysical Journal, 798 (1). p. 58. ISSN 0004-637X
Creators	Kirk, Jason Matthew, Gear, W K, Fritz, J, Smith, M W L, Ford, G, Baes, M, Bendo, G J, De Looze, I, Eales, Steve and Gentile, G

It is advisable to refer to the publisher's version if you intend to cite from the work.
<https://doi.org/10.1088/0004-637X/798/1/58>

For information about Research at UCLan please go to <http://www.uclan.ac.uk/research/>

All outputs in CLOK are protected by Intellectual Property Rights law, including Copyright law. Copyright, IPR and Moral Rights for the works on this site are retained by the individual authors and/or other copyright owners. Terms and conditions for use of this material are defined in the <http://clock.uclan.ac.uk/policies/>

The Herschel¹Exploitation of Local Galaxy Andromeda (HELGA). VI. The distribution and properties of molecular cloud associations in M31

J. M. Kirk^{1,2}, W. K. Gear², J. Fritz³, M. W. L. Smith², G. Ford², M. Baes³, G. J. Bendo⁴,
I. De Looze³, S. A. Eales², G. Gentile^{3,5}, H.L. Gomez², K. Gordon^{6,3}, B. O'Halloran⁷,
S. C. Madden⁸, J. Roman Duval⁶, J. Verstappen^{3,9}, S. Viaene³, A. Boselli¹⁰, A. Cooray¹¹,
V. Lebouteiller⁸, L. Spinoglio¹²,

ABSTRACT

In this paper we present a catalog of Giant Molecular Clouds (GMCs) in the Andromeda (M31) galaxy extracted from the *Herschel* Exploitation of Local Galaxy Andromeda (HELGA) dataset. GMCs are identified from the *Herschel* maps using a hierarchical source extraction algorithm. We present the results of this new catalog and characterise the spatial distribution and spectral energy properties of its clouds based on the radial dust/gas properties found by Smith et al (2012). 326 GMCs in the mass range $10^4 - 10^7 M_{\odot}$ are identified, their cumulative mass distribution is found to be proportional to $M^{-2.34}$ in agreement with earlier studies. The GMCs appear to follow the same cloud mass to L_{CO} correlation observed in the Milky Way. However, comparison between this catalog and interferometry studies also shows that the GMCs are substructured below the *Herschel* resolution limit suggesting that we are observing associations of GMCs. Following Gordon et al. (2006), we study the spatial structure

¹Jeremiah Horrocks Institute, University of Central Lancashire, Preston PR1 2HE, UK

²School of Physics and Astronomy, Cardiff University, Queens Buildings, The Parade, Cardiff, Wales, CF24 3AA, UK

³Sterrenkundig Observatorium, Universiteit Gent, Krijgslaan 281 S9, B-9000 Gent, Belgium

⁴UK ALMA Regional Centre Node, Jodrell Bank Centre for Astrophysics, School of Physics and Astronomy, University of Manchester, Oxford Road, Manchester M13 9PL, UK

⁵Department of Physics and Astrophysics, Vrije Universiteit Brussel, Pleinlaan 2, 1050 Brussels, Belgium

⁶Space Telescope Science Institute, 3700 San Martin Drive, Baltimore, MD 21218, USA

⁷Astrophysics Group, Imperial College, Blackett Laboratory, Prince Consort Road, London SW7 2AZ, UK

⁸Laboratoire AIM, CEA/DSM-CNRS-Université Paris Diderot, Irfu/Service, Paris, F-91190 Gif-sur-Yvette, France

⁹Kapteyn Astronomical Institute, P.O. Box 800, 9700 AV Groningen, the Netherlands

¹⁰Laboratoire d'Astrophysique de Marseille, UMR 7326 CNRS, 38 rue F. Joliot-Curie, 13388 Marseille, France

¹¹Department of Physics and Astronomy, University of California, Irvine, California 92697, USA

¹²Istituto di Astrofisica e Planetologia Spaziali (INAF-IAPS), via del Fosso del Cavaliere 100, 00133, Roma

of M31 by splitting the observed structure into a set of spiral arms and offset rings. We fit radii of 10.3 and 15.5 kpc to the two most prominent rings. We then fit a logarithmic spiral with a pitch angle of 8.9° to the GMCs not associated with either ring. Lastly, we comment upon the effects of deprojection on our results and investigate the effect different models for M31’s inclination will have upon the projection of an unperturbed spiral arm system.

Subject headings: Galaxies: Individual: M31, Galaxies: ISM, ISM: clouds, Galaxies: structure

1. Introduction

The study of star formation within our own Galaxy is limited by our ability to resolve molecular clouds from the tangled web of the Galactic disc. The disc of the Milky Way has been mapped as part of the CO survey of Dame et al. (2001) and the *Spitzer* GLIMPSE (Churchwell et al. 2009) and MIPS GAL surveys (Carey et al. 2009), amongst others, most recently by the Hi-GAL *Herschel* Open Time Key Project (Molinari et al. 2010). Nevertheless, ensemble studies of giant molecular clouds (GMCs) within our own Galaxy are still hampered by distance ambiguities and sampling limitations imposed by our own position within the Galactic disc.

The solution to this is to study the same molecular clouds in nearby galaxies where we can observe the entire disc. The nearest spiral galaxy (785 ± 25 kpc, McConnachie et al. 2005) to our own Milky Way is the Andromeda Galaxy (M31). It is the largest member of the Local Group of galaxies, of which our own Milky Way is the second largest. *Herschel* Exploitation of Local Galaxy Andromeda (HELGA; Fritz et al. 2012, hereafter Paper I) is the first comprehensive, high-resolution far-infrared and sub-mm survey of M31 and its surroundings. There is a long established link between molecular gas emission and observations of dust (e.g. Burstein & Heiles 1982), so the *Herschel* data set allows us to trace emission from the GMCs in M31.

GMCs were first cataloged in the Milky Way as dark nebulae, dust silhouettes seen against a bright background star field (Barnard 1919; Lynds 1962), but a comparable catalog of 730 dark nebulae in M31 was not published until the 1980s (Hodge 1980). Single dish CO observations mapped the molecular gas associated with these dark nebulae (Boulanger et al. 1981; Lada et al. 1988), but it was not until the first small interferometer maps were produced (Vogel et al. 1987; Wilson & Rudolph 1993; Allen et al. 1995; Loinard & Allen 1998) that individual GMCs could be resolved. Later studies were able to cover larger areas as Sheth et al. (2000, 2008, hereafter S08) mapped 6 clouds and Rosolowsky (2007, hereafter R07) mapped 67 clouds. R07 was the first study

¹Herschel is an ESA space observatory with science instruments provided by European-led Principal Investigator consortia and with important participation from NASA.

to perform a statistical analysis of GMCs in M31. Many of these studies (e.g., Vogel et al. 1987, R07, S08) have noted that, individually or in assemblage, M31’s GMCs resemble those in the Milky Way. The HELGA data now allows us to determine whether this correspondence extends to the entire disc of M31.

The dominant feature of M31 is a 100’ diameter ring which appears in continuum emission from the infrared (Habing et al. 1984; Haas et al. 1998; Gordon et al. 2006) to the radio (Bystedt et al. 1984). The Ring is also detected in H- α (Arp 1964; Devereux et al. 1994) and carbon monoxide (Nieten et al. 2006). At the usual distance estimates to Andromeda, the Ring has a radius of 10 kpc. Gordon et al. (2006) used deprojected *Spitzer* 24- μ m data to fit a circle of radius 9.8 kpc to the Ring and showed that its center was offset from the center of the spiral arm pattern. In Paper I we showed how a comparison of *Herschel* and HI atomic data revealed the presence of several low-intensity extended features we named E, F, and G at radii of 21, 26, and 31 kpc, respectively. These features appear to form additional rings or arms beyond the well known 10 kpc ring and the fainter 15 kpc ring (Haas et al. 1998; Gordon et al. 2006).

A key factor in deriving parameters from FIR observations is a practical knowledge of the dust grain properties. In Smith et al. (2012, hereafter Paper II) we compared the HELGA data to the molecular gas as traced by carbon monoxide line maps in order to examine the effects of metallicity gradients on the dust-to-gas ratio across the M31 disc. It was found that the gas-to-dust ratio r_{gd} had an exponential dependence with radius of the form $\log r_{\text{gd}} = 1.1 + 0.0496R$ where R is the galactocentric radius. Paper I found that the dust emissivity index, β , was ~ 1.9 in the 10 kpc ring, in broad agreement with studies of local Milky Way clouds (e.g., Planck Collaboration et al. 2011). However, Paper II also demonstrated that β varied globally from a high of ~ 2.5 in the center to a value of ~ 1.7 at large radii.

Ford et al. (2013, hereafter Paper III) combined *Galex* FUV and *Spitzer* 24 μ m datasets to make a star formation rate (SFR) map of M31 and found a global SFR of $0.25 \text{ M}_{\odot} \text{ yr}^{-1}$. This rate is a quarter of that of the Milky Way (Robitaille & Whitney 2010; Lee et al. 2012), despite their masses as inferred from the motion of their satellites being comparable (Watkins et al. 2010; Reid et al. 2009). Paper III also showed that M31 was positioned below the scatter of ‘normal’ spiral galaxies on the Kennicutt-Schmidt plot (Schmidt 1959; Kennicutt 1998b) of mass versus SFR surface densities. One of the questions that arises from these studies is whether the differences in SFR between M31 and the Milky Way is due to a difference in the number of giant molecular clouds (GMCs, the sites of star formation) or whether it is due to fundamental difference in the individual GMCs’ properties.

In this paper we use the HELGA data to analyze the population of GMCs and GMC complexes in M31. In Section 2 we briefly describe the HELGA data and Section 3 we describe the source extraction technique using the CSAR (Conservative Source AlgoRithm) dendrogram algorithm (Kirk et al. 2013). In Section 4 we examine the properties of the extracted sources and compare them with the observations of clouds from the Milky Way. Then in Section 5 we re-examine the

structure of M31 based upon the positions of the *Herschel* sources.

2. Observations

M31 was observed on the 18-20th of December, 2010 and the 23rd of January, 2011 (Observation Days 584-586 and 620) using the parallel-mode of the SPIRE (Griffin et al. 2010) and PACS (Poglitsch et al. 2010) cameras aboard the *Herschel Space Observatory* (Pilbratt et al. 2010). These data used PACS filters centered at wavelengths of $100\text{-}\mu\text{m}$ and $160\text{-}\mu\text{m}$, with angular resolutions of $12.5''$ and $13.3''$ respectively (accounting for the scan speed of $60''/\text{s}$), and SPIRE filters centered at wavelengths of $250\text{ }\mu\text{m}$, $350\text{ }\mu\text{m}$, and $500\text{ }\mu\text{m}$, with angular resolutions of $18.2''$, $24.5''$ and $36.0''$ respectively. The observation strategy and data reduction methods are described in detail in Paper I. No *PLANCK* calibration offsets were applied (e.g. Bernard et al. 2010) as we will only be performing background subtracted (i.e. DC level removed) photometry.

Figure 1 shows a three-color image of M31 using SPIRE $500\mu\text{m}$ (red), $250\mu\text{m}$ (green), and PACS $100\mu\text{m}$ (blue) in rotated coordinates. We use a position center with a Right Ascension and Declination of $00^{\text{h}}42^{\text{m}}44^{\text{s}}.330$ $41^{\circ}16'07''.50$ (Skrutskie et al. 2006, the 2MASS catalog position). In common with other HELGA studies, we assume a distance to Andromeda of $785 \pm 25\text{ kpc}$ (McConnachie et al. 2005) and global inclination and position angles of 77° and 38° respectively. A discussion of the assumed angles is included in Appendix A. At this distance, the final PACS and SPIRE angular resolutions are equivalent to spatial resolutions of 48–137 pc.

The dominant feature at the longer wavelengths is the 10 kpc Ring. This Ring is seen in Figure 1 as the yellow/white-loop traced by strong SPIRE emission. Also visible in Figure 1 is the color difference between the cooler ring and the bluer, warmer galaxy center.

Andromeda is highly inclined and displays a significant warp at larger radii (e.g., Chemin et al. 2009; Corbelli et al. 2010). The radius of the disc viewed in the *Herschel* images (e.g, Figure 1) is $\sim 20\text{ kpc}$ (similar to the radius out to which we can extract sources, see Figure 5), approximately half that for which HI models have been computed (e.g., Chemin et al. 2009; Corbelli et al. 2010). Figure 2 shows the same as Figure 1 except with the y-axis deprojected using the assumed inclination angle of 77° . We discuss the magnitude of the discrepancy between the assumption of flat or warped geometry on the deprojected structure in Appendix A.

3. Catalog

3.1. Source Identification

The emission from M31, as with any spiral galaxy, is highly hierarchical and is organized into tiers of rings, arms, complexes, and clouds. A source extraction algorithm must take this tree, the

hierarchy of nested structures, into account. For this purpose we use the CSAR source extraction algorithm (Kirk et al. 2013). CSAR works by processing the pixels in an image in order of descending flux, assigning each pixel in turn to a region centered on a local-maxima. A region is flagged as significant if it passes contrast ($S/N > 5\sigma$) and size (larger than the telescope PSF) criteria. Neighboring regions grow downwards in flux until they touch. If both regions are significant then a record of their state is made. The regions are then merged. The process continues until all pixels above a minimum value have been processed.

CSAR is, in effect, walking through the binary structure tree of the map that it is being run upon. The tree is made from nodes, in effect single closed isophotal contours, and branches that relate how one node nests (encloses) another pair of nodes (contours). Nodes at the very top of the tree, the ‘leaf-nodes’, contain no other nodes – i.e., they contain no resolved substructure – and are directly analogous to a normal source. At the base of the tree is the ‘root-node’, this is the node which contains all the other nodes. Thus the tree describes an entire region as a set of closed isophotal contours and defines the region’s structure by recording how those contours nest within each other.

While the utility of using structure tree decomposition to study the hierarchical properties of molecular clouds has been known for some time (Houllahan & Scalo 1992), its practical application has only recently become routine (Rosolowsky et al. 2008; Goodman et al. 2009; Wünsch et al. 2012). The same theory has also been applied to the hierarchical relationship of stellar clusters in Local Group galaxies (Gouliermis et al. 2010). The theory behind the Rosolowsky et al. (2008) and Wünsch et al. (2012) codes and CSAR is similar, although CSAR is designed to work with monochromatic data.

The $350\mu\text{m}$ SPIRE image was used to define the working resolution/pixel grid as it improves upon the resolution of the $500\mu\text{m}$ data and still leaves at least three resolved data-points across the SED peak (enough points to fit a 2-parameter SED against). All data was reprojected onto this grid for analysis (see Section 3.3). CSAR was run on the smoothed/resample $250\mu\text{m}$ image of M31 as this was the channel with the highest signal-to-noise. The extraction was performed on the data before it was deprojected in order to avoid problems introduced by a non-circular PSF. M31 is surrounded by extended noisy structure that does not appear to be coherent (see Paper I), this is foreground Galactic cirrus. This cirrus is particularly visible in the north-east corner of the M31 field and is distinct from M31 in HI line channel maps (see fig 4. of Paper I). We exclude the cirrus from our analysis by ‘pruning’ the tree back to the branch that we know just contains M31 emission.

3.2. Dendrogram

After pruning, the M31 tree was left with 651 nodes of which 326 were leaf-nodes. Figures 3 and 4 show the CSAR results for the M31 branch of the $250\mu\text{m}$ structure tree. Figure 3 shows

a dendrogram (a form of tree diagram used to represent structures in hierarchical datasets) of the extracted structure within M31. The vertical axis is the $250\mu\text{m}$ intensity, the horizontal-axis is an arbitrary-dimensionless index given to each leaf-node such as to unwrap the tree structure and clearly show the separate branches without them overlapping. The peak-to-background $250\mu\text{m}$ intensity of each node is shown by the vertical colored bars. The horizontal lines show the equivalent contour level at which two nodes merge. Figure 4 shows the positions of the extracted nodes plotted over a map of SPIRE $250\mu\text{m}$ intensity. The color of the vertical bars in Figure 3 and the annotations in Figure 4 are the same and show the distance of the leaf-nodes from the center of M31. This is the same color scheme as used by Paper III and is shown by the bar in Figure 4.

A striking feature of the dendrogram in Figure 3 is that several large branches all merge at approximately the same intensity level, this is the 10 kpc Ring. These branches are shown by the dashed box plotted over the dendrogram. The spatial extent of the region, the node just before the ring closes, is shown by the single contour in Figure 4. We can now walk down the structure tree from the brightest source to the faintest. The structures that comprise the ring (the cyan markers) form several distinct complexes, but all merge together into a single structure at approximately the same intensity level ($\sim 20 \text{ MJy/sr}$). Several prominent structures interior to the 10 kpc Ring (the green clouds) then merge with the tree before the exterior clouds (shown in blue and purple) connect. These exterior sources are distinct from background sources in that they are connected to M31 by contiguous emission.

3.3. Measured Properties

Table 1. Table of measured leaf-node parameters.

Name (HELGA)	R.A. (2000)	Dec. (2000)	X [kpc]	Y [kpc]	R [kpc]	FWHM [pc]	$S_{350\mu m}$ [Jy]	$S_{250\mu m}$ [Jy]	$S_{160\mu m}$ [Jy]	$S_{100\mu m}$ [Jy]
1	00 ^h 39 ^m 10 ^s .2	40° 37′ 21″	12.7	8.4	15.2	78	0.84 ± 0.02	1.8 ± 0.1	3.0 ± 0.1	2.1 ± 0.1
2	00 ^h 39 ^m 16 ^s .1	40° 36′ 30″	12.6	7.0	14.4	78	0.27 ± 0.02	0.59 ± 0.01	0.76 ± 0.07	0.58 ± 0.08
3	00 ^h 42 ^m 30 ^s .9	41° 06′ 26″	2.1	-4.0	4.5	99	0.33 ± 0.01	0.81 ± 0.03	1.1 ± 0.1	0.47 ± 0.04
4	00 ^h 42 ^m 22 ^s .8	41° 05′ 59″	2.4	-3.1	3.9	220	0.31 ± 0.02	0.75 ± 0.04	0.97 ± 0.07	0.51 ± 0.06
5	00 ^h 42 ^m 41 ^s .6	41° 07′ 20″	1.7	-5.1	5.3	78	0.25 ± 0.01	0.55 ± 0.03	0.63 ± 0.04	0.31 ± 0.06
6	00 ^h 42 ^m 46 ^s .3	41° 08′ 36″	1.3	-5.0	5.1	91	0.096 ± 0.008	0.22 ± 0.02	0.28 ± 0.03	0.12 ± 0.01
7	00 ^h 42 ^m 11 ^s .2	41° 07′ 06″	2.5	-0.6	2.6	200	0.57 ± 0.02	1.5 ± 0.1	2.4 ± 0.1	1.4 ± 0.1
8	00 ^h 42 ^m 29 ^s .3	41° 18′ 14″	0.0	3.6	3.6	110	0.26 ± 0.02	0.71 ± 0.04	1.2 ± 0.1	0.78 ± 0.14
9	00 ^h 42 ^m 21 ^s .5	41° 18′ 26″	0.2	4.9	4.9	130	0.13 ± 0.01	0.34 ± 0.03	0.45 ± 0.10	< 0.40
10	00 ^h 42 ^m 34 ^s .7	41° 21′ 23″	-0.7	4.7	4.8	140	1.2 ± 0.1	2.6 ± 0.1	3.5 ± 0.3	1.3 ± 0.3
11	00 ^h 42 ^m 41 ^s .1	41° 22′ 40″	-1.1	4.6	4.7	78	0.099 ± 0.019	0.28 ± 0.04	0.37 ± 0.10	0.27 ± 0.06
12	00 ^h 42 ^m 26 ^s .3	41° 20′ 11″	-0.3	5.2	5.2	110	0.37 ± 0.02	0.86 ± 0.04	1.1 ± 0.1	< 0.41
13	00 ^h 42 ^m 13 ^s .1	41° 16′ 54″	0.7	5.2	5.2	130	0.10 ± 0.01	0.23 ± 0.02	0.20 ± 0.03	0.14 ± 0.02
14	00 ^h 42 ^m 49 ^s .9	41° 25′ 18″	-1.8	4.9	5.2	140	0.70 ± 0.02	1.6 ± 0.1	2.2 ± 0.1	1.0 ± 0.1
15	00 ^h 42 ^m 06 ^s .4	41° 15′ 59″	1.0	5.6	5.7	110	0.099 ± 0.012	0.25 ± 0.02	0.37 ± 0.06	0.13 ± 0.02
16	00 ^h 42 ^m 06 ^s .9	41° 14′ 58″	1.2	4.9	5.1	78	0.041 ± 0.007	0.11 ± 0.01	0.14 ± 0.03	0.063 ± 0.012
17	00 ^h 43 ^m 12 ^s .9	41° 28′ 23″	-3.0	3.4	4.5	140	0.75 ± 0.03	1.7 ± 0.1	2.0 ± 0.1	0.79 ± 0.04
18	00 ^h 43 ^m 21 ^s .4	41° 30′ 14″	-3.5	3.3	4.8	78	0.078 ± 0.008	0.17 ± 0.01	0.20 ± 0.05	0.082 ± 0.013
19	00 ^h 43 ^m 03 ^s .0	41° 26′ 22″	-2.3	3.6	4.3	78	0.12 ± 0.01	0.29 ± 0.02	0.31 ± 0.04	0.17 ± 0.03
20	00 ^h 42 ^m 00 ^s .9	41° 13′ 53″	1.5	5.2	5.4	130	0.16 ± 0.01	0.35 ± 0.02	0.43 ± 0.04	0.20 ± 0.02
21	00 ^h 43 ^m 05 ^s .2	41° 24′ 13″	-2.0	1.9	2.8	140	0.89 ± 0.02	2.1 ± 0.1	2.8 ± 0.2	1.3 ± 0.1
22	00 ^h 42 ^m 57 ^s .8	41° 24′ 11″	-1.8	3.0	3.5	78	0.039 ± 0.006	0.10 ± 0.01	< 0.11	< 0.069
23	00 ^h 43 ^m 06 ^s .7	41° 21′ 49″	-1.6	0.2	1.6	170	0.45 ± 0.02	1.2 ± 0.1	1.9 ± 0.1	1.2 ± 0.1
24	00 ^h 43 ^m 27 ^s .2	41° 30′ 57″	-3.8	2.9	4.8	96	0.20 ± 0.01	0.40 ± 0.01	0.44 ± 0.06	0.22 ± 0.06
25	00 ^h 43 ^m 04 ^s .9	41° 20′ 30″	-1.3	-0.3	1.4	78	0.025 ± 0.006	0.071 ± 0.013	0.097 ± 0.021	0.053 ± 0.015
26	00 ^h 41 ^m 30 ^s .3	41° 04′ 55″	4.0	4.2	5.8	87	0.72 ± 0.02	1.6 ± 0.1	2.5 ± 0.1	1.8 ± 0.1
27	00 ^h 41 ^m 40 ^s .2	41° 07′ 52″	3.2	4.5	5.5	270	2.0 ± 0.1	4.4 ± 0.1	5.5 ± 0.1	2.2 ± 0.1
28	00 ^h 41 ^m 51 ^s .2	41° 11′ 04″	2.3	4.9	5.4	78	0.090 ± 0.009	0.19 ± 0.02	0.20 ± 0.03	0.068 ± 0.021
29	00 ^h 42 ^m 20 ^s .9	41° 16′ 02″	0.6	3.5	3.5	86	0.26 ± 0.01	0.62 ± 0.03	0.85 ± 0.07	0.57 ± 0.09
30	00 ^h 42 ^m 39 ^s .5	41° 18′ 37″	-0.3	2.3	2.3	78	0.057 ± 0.004	0.16 ± 0.01	0.27 ± 0.03	0.31 ± 0.02
31	00 ^h 42 ^m 16 ^s .8	41° 13′ 56″	1.1	2.8	3.0	110	0.091 ± 0.009	0.26 ± 0.02	0.41 ± 0.03	0.29 ± 0.04
32	00 ^h 43 ^m 35 ^s .7	41° 33′ 08″	-4.4	3.0	5.3	210	0.28 ± 0.02	0.62 ± 0.02	0.66 ± 0.07	0.30 ± 0.06
33	00 ^h 42 ^m 31 ^s .4	41° 23′ 48″	-1.0	6.7	6.8	78	0.078 ± 0.004	0.18 ± 0.01	0.14 ± 0.04	0.068 ± 0.015

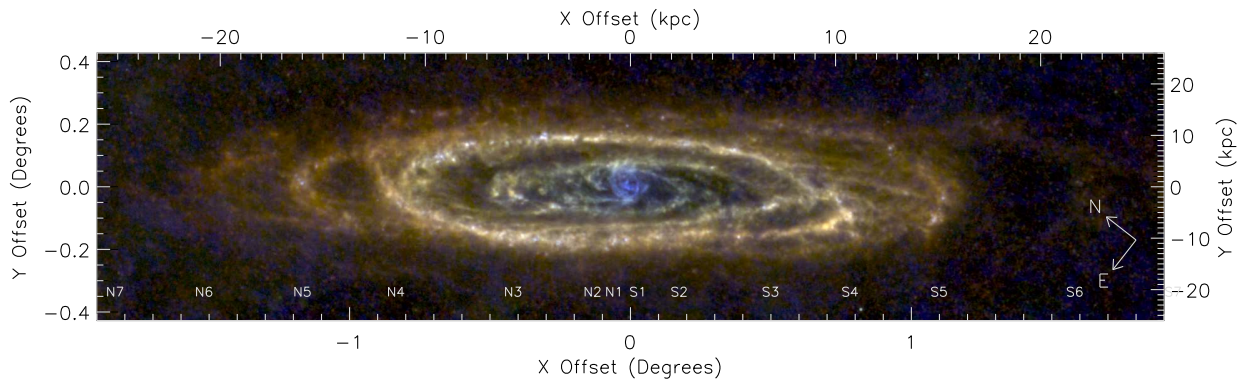


Fig. 1.— A three-color image of M31 showing SPIRE $500\mu\text{m}$ (red) and $250\mu\text{m}$ (green) with PACS $100\mu\text{m}$ (blue). The map has been rotated by the assumed position angle of 38° . The position center has an RA and Declination of $0^h 42^m 44^s.33041^\circ 16' 07''.50$ (J2000), the direction of each axis is shown by the white arrows. The top and left axes show offsets calculated from the assumed distance to M31. The offsets of the spiral arm crossing points from Baade (1963) are annotated as N1–6 and S1–6. The green and blue data have been convolved to this study’s working resolution (the $350\mu\text{m}$ beam FWHM, see text). The $500\mu\text{m}$ data is shown for comparison only and is left unconvolved.

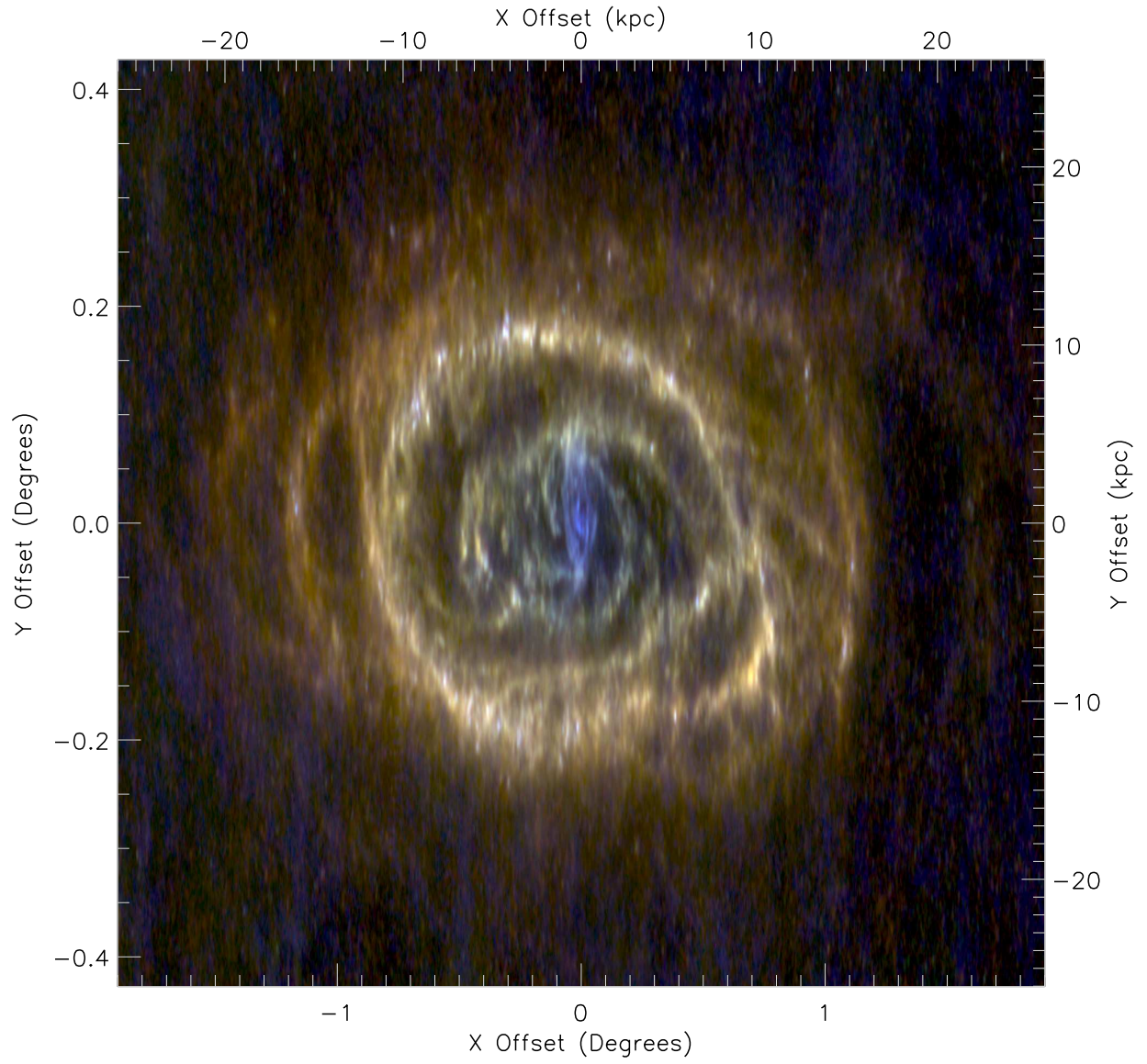


Fig. 2.— As Figure 1, except that the y-axis has been deprojected using the assumed inclination angle of 77° .

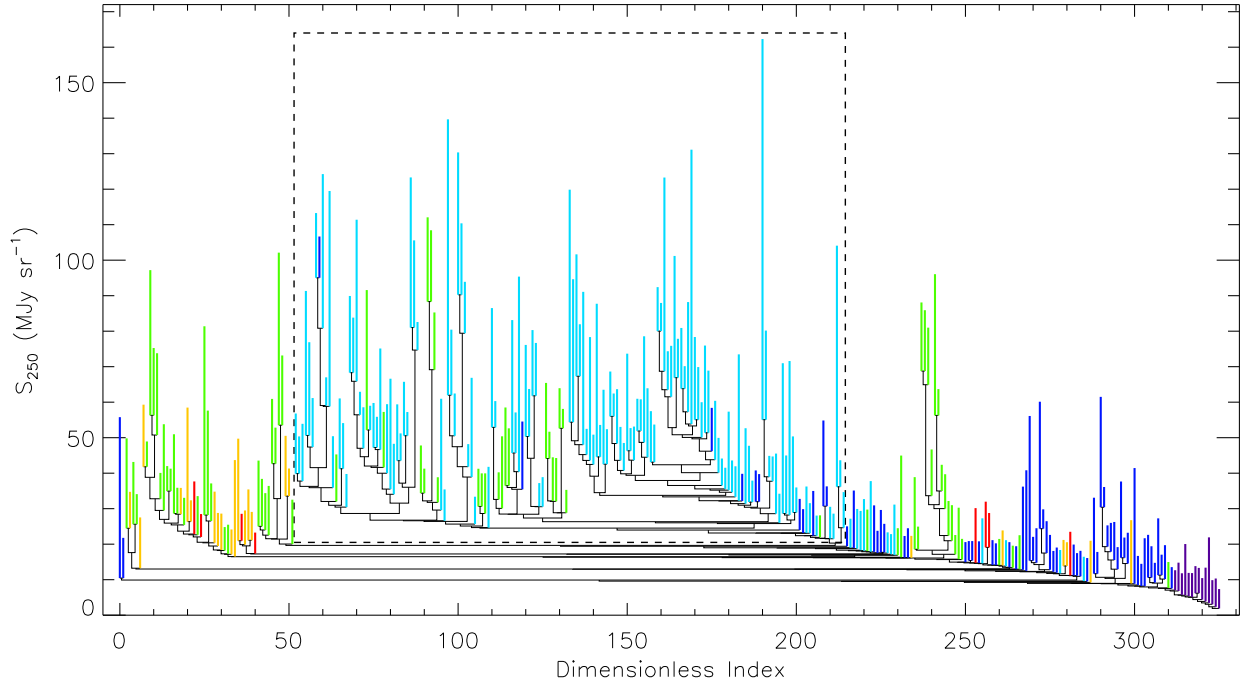


Fig. 3.— A dendrogram of 250 μ m-intensity structure towards M31. The peak-to-background extent of each node is shown by the vertical bars. The colored bars are the leaf-nodes, the color denotes the galactocentric radius of each node (see Figure 4). The horizontal lines show the equivalent contour level at which two neighboring nodes merge. The dashed box plotted over the dendrogram shows the branch containing the 10 kpc Ring.

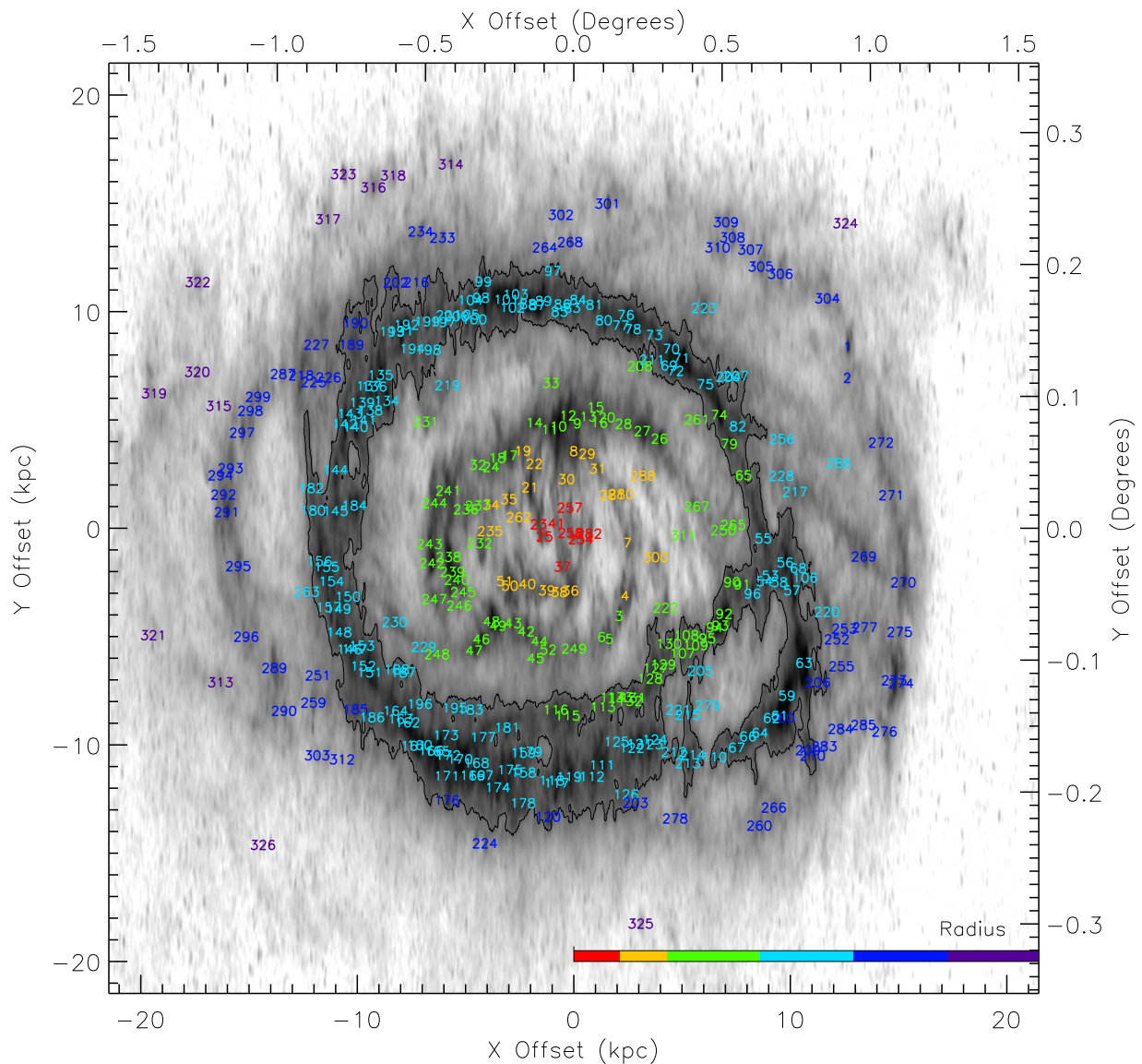


Fig. 4.— The relative positions of the leaf-node sources from Figure 3. The greyscale shows SPIRE $250\mu\text{m}$ intensity. The contour shows the area enclosing the 10 kpc Ring branch of the dendrogram. The axes show the offsets in kpc at the assumed distance to M31 and in degrees. The leaf-node labels are colored depending on their galactocentric distance using the same color scheme as Paper III, the scheme is shown by the color bar.

Table 1—Continued

Name (HELGA)	R.A. (2000)	Dec. (2000)	X [kpc]	Y [kpc]	R [kpc]	FWHM [pc]	$S_{350\mu m}$ [Jy]	$S_{250\mu m}$ [Jy]	$S_{160\mu m}$ [Jy]	$S_{100\mu m}$ [Jy]
34	00 ^h 43 ^m 34 ^s .4	41° 29' 54''	-3.8	1.1	4.0	120	0.11 ± 0.01	0.24 ± 0.01	0.18 ± 0.03	0.10 ± 0.02
35	00 ^h 43 ^m 21 ^s .5	41° 27' 14''	-3.0	1.4	3.3	86	0.50 ± 0.02	1.1 ± 0.1	1.3 ± 0.1	0.52 ± 0.03
36	00 ^h 42 ^m 58 ^s .1	41° 14' 52''	-0.1	-2.8	2.8	240	1.4 ± 0.1	3.8 ± 0.1	7.5 ± 0.3	5.6 ± 0.5
37	00 ^h 42 ^m 58 ^s .9	41° 16' 50''	-0.5	-1.7	1.8	150	0.13 ± 0.01	0.37 ± 0.02	0.89 ± 0.10	0.76 ± 0.15
38	00 ^h 43 ^m 05 ^s .7	41° 16' 36''	-0.7	-2.9	3.0	78	0.065 ± 0.006	0.19 ± 0.02	0.30 ± 0.04	0.19 ± 0.03
39	00 ^h 43 ^m 13 ^s .7	41° 18' 39''	-1.2	-2.8	3.1	160	0.27 ± 0.01	0.76 ± 0.03	1.2 ± 0.1	0.74 ± 0.09
40	00 ^h 43 ^m 25 ^s .3	41° 21' 54''	-2.1	-2.5	3.3	480	0.53 ± 0.02	1.3 ± 0.1	1.7 ± 0.1	0.88 ± 0.12
41	00 ^h 42 ^m 54 ^s .4	41° 18' 57''	-0.8	0.3	0.8	95	0.048 ± 0.006	0.17 ± 0.01	0.32 ± 0.03	0.39 ± 0.04
42	00 ^h 43 ^m 35 ^s .1	41° 20' 45''	-2.2	-4.7	5.2	170	0.47 ± 0.02	1.2 ± 0.1	1.6 ± 0.1	0.90 ± 0.06
43	00 ^h 43 ^m 42 ^s .4	41° 23' 04''	-2.8	-4.3	5.2	140	0.28 ± 0.01	0.75 ± 0.03	1.1 ± 0.1	0.80 ± 0.07
44	00 ^h 43 ^m 28 ^s .2	41° 18' 21''	-1.6	-5.2	5.4	130	0.17 ± 0.01	0.47 ± 0.02	0.66 ± 0.08	0.48 ± 0.06
45	00 ^h 43 ^m 34 ^s .0	41° 18' 30''	-1.7	-6.0	6.2	78	0.14 ± 0.01	0.31 ± 0.02	0.34 ± 0.07	< 0.15
46	00 ^h 44 ^m 06 ^s .5	41° 27' 39''	-4.2	-5.1	6.6	100	0.26 ± 0.02	0.58 ± 0.03	0.83 ± 0.08	0.39 ± 0.07
47	00 ^h 44 ^m 13 ^s .6	41° 28' 30''	-4.6	-5.6	7.2	78	0.13 ± 0.02	0.25 ± 0.03	0.29 ± 0.04	0.12 ± 0.03
48	00 ^h 43 ^m 56 ^s .5	41° 26' 34''	-3.8	-4.3	5.7	92	0.78 ± 0.03	1.9 ± 0.1	2.7 ± 0.2	2.0 ± 0.2
49	00 ^h 43 ^m 52 ^s .9	41° 25' 24''	-3.5	-4.5	5.7	78	0.12 ± 0.02	0.29 ± 0.04	0.21 ± 0.07	< 0.14
50	00 ^h 43 ^m 37 ^s .4	41° 24' 39''	-2.9	-2.6	3.9	110	0.34 ± 0.02	0.79 ± 0.04	1.0 ± 0.1	0.50 ± 0.06
51	00 ^h 43 ^m 39 ^s .8	41° 25' 34''	-3.2	-2.4	4.0	78	0.039 ± 0.006	0.098 ± 0.014	0.14 ± 0.04	< 0.093
52	00 ^h 43 ^m 24 ^s .0	41° 16' 45''	-1.2	-5.6	5.7	120	0.32 ± 0.02	0.91 ± 0.02	1.5 ± 0.1	0.87 ± 0.08
53	00 ^h 40 ^m 43 ^s .8	40° 43' 23''	9.1	-2.1	9.3	97	0.23 ± 0.01	0.52 ± 0.02	0.66 ± 0.04	0.33 ± 0.06
54	00 ^h 40 ^m 48 ^s .6	40° 44' 07''	8.8	-2.4	9.2	94	0.16 ± 0.01	0.36 ± 0.02	0.40 ± 0.04	0.13 ± 0.04
55	00 ^h 40 ^m 41 ^s .2	40° 45' 31''	8.8	-0.4	8.8	220	0.79 ± 0.03	1.8 ± 0.1	2.0 ± 0.1	1.1 ± 0.1
56	00 ^h 40 ^m 31 ^s .6	40° 41' 21''	9.8	-1.5	9.9	100	0.56 ± 0.02	1.3 ± 0.1	1.6 ± 0.1	0.90 ± 0.05
57	00 ^h 40 ^m 32 ^s .5	40° 39' 30''	10.1	-2.8	10.5	160	0.61 ± 0.04	1.5 ± 0.1	2.5 ± 0.2	1.7 ± 0.2
58	00 ^h 40 ^m 39 ^s .1	40° 41' 44''	9.5	-2.5	9.8	150	0.23 ± 0.02	0.48 ± 0.03	0.45 ± 0.04	0.19 ± 0.02
59	00 ^h 40 ^m 55 ^s .7	40° 37' 21''	9.9	-7.7	12.5	82	0.30 ± 0.03	0.56 ± 0.04	0.80 ± 0.07	0.32 ± 0.05
60	00 ^h 41 ^m 00 ^s .4	40° 36' 52''	9.8	-8.7	13.1	78	0.045 ± 0.012	0.11 ± 0.02	< 0.19	< 0.13
61	00 ^h 41 ^m 04 ^s .4	40° 38' 01''	9.5	-8.6	12.8	160	1.4 ± 0.1	2.5 ± 0.1	2.5 ± 0.2	0.69 ± 0.09
62	00 ^h 41 ^m 10 ^s .0	40° 39' 13''	9.1	-8.7	12.6	98	0.10 ± 0.01	0.20 ± 0.02	< 0.21	< 0.12
63	00 ^h 40 ^m 38 ^s .4	40° 35' 33''	10.6	-6.2	12.3	270	4.7 ± 0.1	9.6 ± 0.2	12. ± 1.	5.5 ± 0.4
64	00 ^h 41 ^m 20 ^s .3	40° 40' 38''	8.6	-9.4	12.8	89	0.18 ± 0.01	0.38 ± 0.02	0.40 ± 0.04	0.14 ± 0.03
65	00 ^h 40 ^m 42 ^s .1	40° 50' 26''	7.9	2.5	8.2	160	0.24 ± 0.01	0.52 ± 0.02	0.59 ± 0.06	0.23 ± 0.04
66	00 ^h 41 ^m 28 ^s .9	40° 42' 28''	8.1	-9.6	12.5	160	0.67 ± 0.04	1.3 ± 0.1	1.4 ± 0.1	0.50 ± 0.11

Table 1—Continued

Name (HELGA)	R.A. (2000)	Dec. (2000)	X [kpc]	Y [kpc]	R [kpc]	FWHM [pc]	$S_{350\mu m}$ [Jy]	$S_{250\mu m}$ [Jy]	$S_{160\mu m}$ [Jy]	$S_{100\mu m}$ [Jy]
67	00 ^h 41 ^m 38 ^s .4	40° 43′ 57″	7.5	-10.1	12.6	78	0.11 ± 0.01	0.25 ± 0.02	0.34 ± 0.03	0.23 ± 0.02
68	00 ^h 40 ^m 24 ^s .1	40° 39′ 05″	10.4	-1.8	10.5	78	0.12 ± 0.01	0.26 ± 0.01	0.32 ± 0.02	0.20 ± 0.02
69	00 ^h 41 ^m 10 ^s .0	41° 05′ 24″	4.4	7.5	8.7	78	0.17 ± 0.02	0.37 ± 0.04	0.41 ± 0.07	0.19 ± 0.03
70	00 ^h 41 ^m 05 ^s .4	41° 05′ 31″	4.5	8.3	9.5	78	0.12 ± 0.01	0.26 ± 0.03	0.34 ± 0.07	0.14 ± 0.02
71	00 ^h 41 ^m 00 ^s .5	41° 03′ 37″	5.0	7.9	9.3	160	1.4 ± 0.1	3.3 ± 0.1	5.1 ± 0.3	3.3 ± 0.3
72	00 ^h 41 ^m 06 ^s .7	41° 04′ 12″	4.7	7.3	8.7	78	< 0.032	0.074 ± 0.015	0.096 ± 0.017	0.072 ± 0.017
73	00 ^h 41 ^m 14 ^s .0	41° 08′ 38″	3.7	9.0	9.7	100	0.18 ± 0.02	0.37 ± 0.03	0.43 ± 0.07	0.28 ± 0.08
74	00 ^h 40 ^m 46 ^s .5	40° 56′ 00″	6.7	5.3	8.6	140	1.2 ± 0.1	2.6 ± 0.1	3.6 ± 0.1	1.8 ± 0.1
75	00 ^h 40 ^m 49 ^s .9	40° 59′ 06″	6.1	6.7	9.0	130	0.16 ± 0.01	0.32 ± 0.02	0.30 ± 0.07	< 0.15
76	00 ^h 41 ^m 28 ^s .8	41° 13′ 43″	2.4	9.9	10.2	160	0.22 ± 0.01	0.53 ± 0.03	0.70 ± 0.07	0.35 ± 0.07
77	00 ^h 41 ^m 34 ^s .2	41° 14′ 15″	2.2	9.4	9.7	89	0.067 ± 0.009	0.18 ± 0.02	0.27 ± 0.05	0.17 ± 0.04
78	00 ^h 41 ^m 26 ^s .9	41° 12′ 12″	2.7	9.2	9.6	160	1.1 ± 0.1	2.6 ± 0.1	5.0 ± 0.2	3.5 ± 0.2
79	00 ^h 40 ^m 45 ^s .5	40° 53′ 36″	7.2	3.9	8.2	140	0.35 ± 0.02	0.74 ± 0.04	0.64 ± 0.06	0.28 ± 0.02
80	00 ^h 41 ^m 44 ^s .4	41° 17′ 06″	1.4	9.6	9.7	220	0.77 ± 0.03	1.6 ± 0.1	2.3 ± 0.1	1.2 ± 0.1
81	00 ^h 41 ^m 47 ^s .6	41° 19′ 02″	1.0	10.4	10.4	110	0.53 ± 0.02	1.2 ± 0.1	2.2 ± 0.1	1.4 ± 0.1
82	00 ^h 40 ^m 36 ^s .5	40° 52′ 42″	7.6	4.7	9.0	120	0.48 ± 0.03	1.0 ± 0.1	1.4 ± 0.1	0.52 ± 0.08
83	00 ^h 42 ^m 02 ^s .9	41° 22′ 30″	-0.1	10.2	10.2	78	0.13 ± 0.01	0.30 ± 0.02	0.35 ± 0.02	0.23 ± 0.02
84	00 ^h 41 ^m 57 ^s .4	41° 21′ 46″	0.2	10.6	10.6	78	0.092 ± 0.013	0.17 ± 0.02	0.17 ± 0.03	< 0.061
85	00 ^h 42 ^m 12 ^s .0	41° 24′ 24″	-0.6	10.0	10.1	120	0.21 ± 0.02	0.46 ± 0.03	0.52 ± 0.09	0.28 ± 0.08
86	00 ^h 42 ^m 08 ^s .8	41° 24′ 10″	-0.5	10.4	10.4	78	0.028 ± 0.009	0.075 ± 0.014	< 0.088	< 0.067
87	00 ^h 42 ^m 25 ^s .6	41° 28′ 09″	-1.7	10.3	10.5	98	0.53 ± 0.04	1.2 ± 0.1	1.8 ± 0.1	1.2 ± 0.1
88	00 ^h 42 ^m 31 ^s .5	41° 29′ 40″	-2.1	10.4	10.6	84	0.31 ± 0.03	0.70 ± 0.05	0.96 ± 0.07	0.55 ± 0.05
89	00 ^h 42 ^m 20 ^s .5	41° 27′ 14″	-1.4	10.5	10.6	78	0.044 ± 0.008	0.097 ± 0.016	< 0.16	< 0.13
90	00 ^h 41 ^m 09 ^s .9	40° 49′ 18″	7.3	-2.4	7.7	220	0.49 ± 0.02	1.1 ± 0.1	1.5 ± 0.1	0.88 ± 0.09
91	00 ^h 41 ^m 03 ^s .8	40° 47′ 37″	7.8	-2.6	8.2	81	0.066 ± 0.007	0.13 ± 0.01	0.11 ± 0.03	< 0.077
92	00 ^h 41 ^m 21 ^s .2	40° 49′ 41″	7.0	-3.9	8.0	78	0.15 ± 0.02	0.42 ± 0.05	0.65 ± 0.07	0.44 ± 0.06
93	00 ^h 41 ^m 25 ^s .9	40° 49′ 58″	6.8	-4.5	8.1	78	0.15 ± 0.02	0.34 ± 0.04	0.45 ± 0.07	0.33 ± 0.05
94	00 ^h 41 ^m 29 ^s .9	40° 50′ 49″	6.5	-4.5	7.9	78	0.080 ± 0.018	0.24 ± 0.04	0.43 ± 0.08	0.46 ± 0.13
95	00 ^h 41 ^m 36 ^s .9	40° 51′ 41″	6.2	-5.0	8.0	78	0.052 ± 0.007	0.12 ± 0.01	0.19 ± 0.04	0.10 ± 0.02
96	00 ^h 40 ^m 58 ^s .8	40° 45′ 42″	8.3	-3.0	8.8	140	0.96 ± 0.03	2.0 ± 0.1	2.4 ± 0.1	1.2 ± 0.1
97	00 ^h 42 ^m 08 ^s .6	41° 26′ 37″	-1.0	11.9	12.0	78	0.049 ± 0.007	0.14 ± 0.01	0.17 ± 0.03	0.13 ± 0.03
98	00 ^h 43 ^m 01 ^s .5	41° 37′ 18″	-4.3	10.7	11.5	150	1.5 ± 0.1	3.5 ± 0.1	5.6 ± 0.4	4.5 ± 0.3
99	00 ^h 42 ^m 56 ^s .8	41° 37′ 22″	-4.2	11.4	12.2	78	0.084 ± 0.009	0.22 ± 0.02	0.31 ± 0.06	0.26 ± 0.06

Table 1—Continued

Name (HELGA)	R.A. (2000)	Dec. (2000)	X [kpc]	Y [kpc]	R [kpc]	FWHM [pc]	$S_{350\mu m}$ [Jy]	$S_{250\mu m}$ [Jy]	$S_{160\mu m}$ [Jy]	$S_{100\mu m}$ [Jy]
100	00 ^h 43 ^m 10 ^s .3	41° 37' 49''	-4.6	9.7	10.7	78	0.078 ± 0.010	0.21 ± 0.02	0.27 ± 0.09	< 0.21
101	00 ^h 42 ^m 45 ^s .0	41° 33' 14''	-3.1	10.6	11.0	150	0.78 ± 0.04	1.9 ± 0.1	3.4 ± 0.2	2.6 ± 0.2
102	00 ^h 42 ^m 42 ^s .5	41° 32' 02''	-2.8	10.2	10.6	78	0.11 ± 0.03	0.31 ± 0.05	0.34 ± 0.09	0.28 ± 0.05
103	00 ^h 42 ^m 37 ^s .9	41° 31' 54''	-2.7	10.8	11.2	78	0.077 ± 0.018	0.19 ± 0.03	0.27 ± 0.05	0.20 ± 0.05
104	00 ^h 43 ^m 09 ^s .1	41° 38' 57''	-4.8	10.6	11.6	91	0.042 ± 0.008	0.13 ± 0.01	0.18 ± 0.03	0.14 ± 0.04
105	00 ^h 43 ^m 14 ^s .3	41° 39' 06''	-4.9	9.9	11.1	100	0.50 ± 0.02	1.1 ± 0.1	1.3 ± 0.2	0.61 ± 0.13
106	00 ^h 40 ^m 21 ^s .5	40° 37' 44''	10.7	-2.2	10.9	140	0.14 ± 0.01	0.31 ± 0.02	0.31 ± 0.04	0.18 ± 0.06
107	00 ^h 41 ^m 56 ^s .0	40° 55' 15''	5.0	-5.7	7.6	120	0.19 ± 0.01	0.45 ± 0.02	0.58 ± 0.05	0.26 ± 0.02
108	00 ^h 41 ^m 50 ^s .1	40° 55' 08''	5.2	-4.9	7.2	78	0.063 ± 0.007	0.14 ± 0.01	0.15 ± 0.02	0.097 ± 0.019
109	00 ^h 41 ^m 45 ^s .8	40° 53' 22''	5.6	-5.4	7.8	180	0.31 ± 0.02	0.69 ± 0.03	0.73 ± 0.06	0.26 ± 0.05
110	00 ^h 41 ^m 54 ^s .8	40° 47' 16''	6.5	-10.5	12.4	82	0.41 ± 0.02	0.78 ± 0.03	0.86 ± 0.06	0.50 ± 0.04
111	00 ^h 43 ^m 10 ^s .3	41° 04' 57''	1.3	-10.9	11.0	78	0.65 ± 0.04	1.4 ± 0.1	2.0 ± 0.1	1.0 ± 0.1
112	00 ^h 43 ^m 19 ^s .2	41° 06' 14''	0.9	-11.4	11.5	78	0.10 ± 0.01	0.21 ± 0.03	0.20 ± 0.05	0.13 ± 0.03
113	00 ^h 42 ^m 58 ^s .7	41° 06' 27''	1.4	-8.2	8.3	180	0.17 ± 0.02	0.38 ± 0.02	0.52 ± 0.04	0.14 ± 0.04
114	00 ^h 42 ^m 50 ^s .4	41° 05' 09''	1.8	-7.8	8.0	110	0.31 ± 0.01	0.68 ± 0.03	0.86 ± 0.05	0.25 ± 0.03
115	00 ^h 43 ^m 23 ^s .8	41° 11' 50''	-0.3	-8.6	8.6	180	1.0 ± 0.1	2.0 ± 0.1	2.2 ± 0.1	0.96 ± 0.06
116	00 ^h 43 ^m 30 ^s .5	41° 13' 52''	-0.8	-8.3	8.4	110	0.57 ± 0.02	1.1 ± 0.1	1.2 ± 0.1	0.72 ± 0.04
117	00 ^h 43 ^m 43 ^s .9	41° 11' 41''	-0.8	-11.7	11.8	160	1.1 ± 0.1	2.5 ± 0.1	3.8 ± 0.1	2.4 ± 0.1
118	00 ^h 43 ^m 46 ^s .6	41° 12' 31''	-1.0	-11.6	11.6	78	0.067 ± 0.014	0.18 ± 0.02	0.24 ± 0.05	0.22 ± 0.04
119	00 ^h 43 ^m 34 ^s .4	41° 09' 52''	-0.2	-11.4	11.4	94	1.7 ± 0.1	3.7 ± 0.1	6.0 ± 0.2	4.3 ± 0.2
120	00 ^h 43 ^m 56 ^s .0	41° 12' 06''	-1.2	-13.3	13.3	78	0.18 ± 0.01	0.41 ± 0.03	0.60 ± 0.06	0.49 ± 0.06
121	00 ^h 42 ^m 41 ^s .5	40° 59' 34''	3.1	-9.9	10.4	140	0.60 ± 0.02	1.2 ± 0.1	1.2 ± 0.1	0.57 ± 0.06
122	00 ^h 42 ^m 47 ^s .3	41° 00' 40''	2.7	-10.1	10.5	120	0.34 ± 0.02	0.64 ± 0.04	0.74 ± 0.05	0.34 ± 0.04
123	00 ^h 42 ^m 34 ^s .6	40° 57' 51''	3.5	-9.9	10.5	95	0.27 ± 0.02	0.53 ± 0.04	0.67 ± 0.05	0.20 ± 0.03
124	00 ^h 42 ^m 30 ^s .6	40° 57' 14''	3.8	-9.7	10.4	78	0.094 ± 0.014	0.23 ± 0.03	0.27 ± 0.05	0.13 ± 0.03
125	00 ^h 42 ^m 56 ^s .3	41° 03' 17''	2.0	-9.8	10.0	160	0.12 ± 0.01	0.25 ± 0.01	0.32 ± 0.04	0.13 ± 0.03
126	00 ^h 43 ^m 00 ^s .0	41° 00' 18''	2.4	-12.2	12.5	100	0.13 ± 0.01	0.23 ± 0.01	0.21 ± 0.03	< 0.066
127	00 ^h 42 ^m 16 ^s .6	40° 59' 08''	3.8	-6.4	7.5	110	0.45 ± 0.02	0.95 ± 0.04	1.1 ± 0.1	0.33 ± 0.05
128	00 ^h 42 ^m 22 ^s .2	40° 59' 43''	3.5	-6.9	7.8	110	0.12 ± 0.01	0.27 ± 0.02	0.28 ± 0.04	0.16 ± 0.04
129	00 ^h 42 ^m 10 ^s .8	40° 58' 00''	4.2	-6.2	7.5	89	0.22 ± 0.01	0.46 ± 0.02	0.54 ± 0.04	0.17 ± 0.04
130	00 ^h 42 ^m 03 ^s .2	40° 57' 42''	4.4	-5.3	6.9	130	0.23 ± 0.01	0.50 ± 0.03	0.74 ± 0.05	0.41 ± 0.04
131	00 ^h 42 ^m 37 ^s .0	41° 01' 52''	2.8	-7.8	8.3	78	0.081 ± 0.011	0.18 ± 0.02	0.23 ± 0.04	0.090 ± 0.021
132	00 ^h 42 ^m 39 ^s .7	41° 02' 18''	2.6	-7.9	8.3	78	0.036 ± 0.009	0.082 ± 0.016	0.15 ± 0.03	0.16 ± 0.03

Table 1—Continued

Name (HELGA)	R.A. (2000)	Dec. (2000)	X [kpc]	Y [kpc]	R [kpc]	FWHM [pc]	$S_{350\mu m}$ [Jy]	$S_{250\mu m}$ [Jy]	$S_{160\mu m}$ [Jy]	$S_{100\mu m}$ [Jy]
133	00 ^h 42 ^m 45 ^s .7	41° 04′ 01″	2.1	-7.8	8.1	100	0.080 ± 0.007	0.17 ± 0.01	0.17 ± 0.04	< 0.058
134	00 ^h 44 ^m 24 ^s .5	41° 49′ 25″	-8.6	5.9	10.5	95	0.81 ± 0.03	1.9 ± 0.1	2.4 ± 0.2	1.4 ± 0.1
135	00 ^h 44 ^m 23 ^s .8	41° 51′ 08″	-8.9	7.1	11.4	110	0.91 ± 0.03	2.0 ± 0.1	2.7 ± 0.2	1.2 ± 0.1
136	00 ^h 44 ^m 30 ^s .1	41° 51′ 48″	-9.2	6.6	11.3	78	0.21 ± 0.02	0.57 ± 0.04	0.65 ± 0.08	0.87 ± 0.06
137	00 ^h 44 ^m 33 ^s .6	41° 52′ 39″	-9.4	6.6	11.5	78	0.089 ± 0.023	0.24 ± 0.05	0.39 ± 0.12	< 0.31
138	00 ^h 44 ^m 37 ^s .5	41° 51′ 47″	-9.4	5.5	10.9	78	0.34 ± 0.02	0.94 ± 0.05	1.3 ± 0.1	1.1 ± 0.1
139	00 ^h 44 ^m 41 ^s .4	41° 53′ 16″	-9.8	5.8	11.4	78	0.051 ± 0.006	0.11 ± 0.01	< 0.10	< 0.064
140	00 ^h 44 ^m 50 ^s .5	41° 53′ 38″	-10.1	4.7	11.1	160	1.1 ± 0.1	2.3 ± 0.1	2.8 ± 0.3	1.4 ± 0.2
141	00 ^h 44 ^m 43 ^s .6	41° 52′ 31″	-9.7	5.0	10.9	78	0.080 ± 0.008	0.17 ± 0.02	0.17 ± 0.03	< 0.088
142	00 ^h 44 ^m 57 ^s .3	41° 55′ 26″	-10.6	4.9	11.6	140	1.2 ± 0.1	2.6 ± 0.1	3.3 ± 0.2	2.0 ± 0.1
143	00 ^h 44 ^m 51 ^s .7	41° 54′ 53″	-10.3	5.3	11.6	82	0.066 ± 0.008	0.15 ± 0.02	0.16 ± 0.04	0.11 ± 0.02
144	00 ^h 45 ^m 12 ^s .2	41° 55′ 36″	-11.0	2.7	11.3	86	0.41 ± 0.02	0.86 ± 0.03	0.85 ± 0.08	0.38 ± 0.05
145	00 ^h 45 ^m 20 ^s .1	41° 54′ 26″	-11.0	0.8	11.0	160	0.30 ± 0.02	0.61 ± 0.03	0.65 ± 0.07	0.17 ± 0.03
146	00 ^h 45 ^m 37 ^s .1	41° 48′ 19″	-10.3	-5.5	11.7	88	0.16 ± 0.01	0.34 ± 0.02	0.24 ± 0.07	< 0.20
147	00 ^h 45 ^m 33 ^s .7	41° 47′ 31″	-10.1	-5.5	11.5	78	0.045 ± 0.013	0.10 ± 0.02	0.14 ± 0.03	0.090 ± 0.019
148	00 ^h 45 ^m 40 ^s .8	41° 50′ 26″	-10.8	-4.8	11.8	130	0.31 ± 0.02	0.66 ± 0.03	0.78 ± 0.11	0.36 ± 0.06
149	00 ^h 45 ^m 36 ^s .8	41° 51′ 11″	-10.9	-3.7	11.5	98	0.12 ± 0.01	0.29 ± 0.01	0.41 ± 0.09	0.32 ± 0.05
150	00 ^h 45 ^m 28 ^s .2	41° 50′ 04″	-10.4	-3.1	10.9	91	0.083 ± 0.007	0.20 ± 0.02	0.25 ± 0.04	0.17 ± 0.03
151	00 ^h 45 ^m 27 ^s .9	41° 44′ 28″	-9.4	-6.6	11.5	290	1.6 ± 0.1	3.3 ± 0.1	4.4 ± 0.2	2.2 ± 0.1
152	00 ^h 45 ^m 31 ^s .1	41° 45′ 40″	-9.7	-6.3	11.6	78	0.044 ± 0.007	0.096 ± 0.008	0.069 ± 0.021	< 0.051
153	00 ^h 45 ^m 28 ^s .1	41° 46′ 27″	-9.8	-5.4	11.2	78	0.096 ± 0.013	0.19 ± 0.03	0.21 ± 0.05	0.18 ± 0.03
154	00 ^h 45 ^m 36 ^s .2	41° 53′ 05″	-11.2	-2.4	11.4	78	0.063 ± 0.008	0.13 ± 0.01	< 0.11	0.097 ± 0.021
155	00 ^h 45 ^m 36 ^s .8	41° 54′ 15″	-11.4	-1.7	11.5	110	0.16 ± 0.01	0.33 ± 0.02	0.30 ± 0.04	0.23 ± 0.04
156	00 ^h 45 ^m 40 ^s .6	41° 55′ 34″	-11.7	-1.5	11.8	150	0.92 ± 0.02	1.8 ± 0.1	2.3 ± 0.2	1.0 ± 0.1
157	00 ^h 45 ^m 43 ^s .1	41° 52′ 47″	-11.3	-3.6	11.9	150	0.38 ± 0.02	0.82 ± 0.05	1.1 ± 0.1	0.94 ± 0.11
158	00 ^h 44 ^m 03 ^s .9	41° 17′ 14″	-2.3	-11.2	11.5	120	0.23 ± 0.01	0.50 ± 0.02	0.68 ± 0.04	0.37 ± 0.03
159	00 ^h 44 ^m 00 ^s .2	41° 17′ 48″	-2.3	-10.3	10.6	180	0.15 ± 0.02	0.39 ± 0.02	0.40 ± 0.06	0.24 ± 0.06
160	00 ^h 45 ^m 08 ^s .2	41° 34′ 30″	-7.1	-10.0	12.3	130	0.24 ± 0.03	0.52 ± 0.05	0.69 ± 0.15	< 0.52
161	00 ^h 45 ^m 12 ^s .3	41° 35′ 25″	-7.4	-10.0	12.4	78	0.057 ± 0.013	0.12 ± 0.02	0.20 ± 0.06	0.21 ± 0.03
162	00 ^h 45 ^m 12 ^s .0	41° 37′ 03″	-7.7	-8.9	11.8	78	0.78 ± 0.04	1.7 ± 0.1	2.3 ± 0.3	2.1 ± 0.2
163	00 ^h 45 ^m 15 ^s .9	41° 38′ 14″	-8.0	-8.8	11.9	82	0.12 ± 0.01	0.27 ± 0.03	< 0.28	< 0.24
164	00 ^h 45 ^m 17 ^s .8	41° 39′ 16″	-8.2	-8.4	11.7	78	0.12 ± 0.01	0.28 ± 0.02	0.34 ± 0.06	0.20 ± 0.04
165	00 ^h 44 ^m 57 ^s .3	41° 31′ 29″	-6.3	-10.3	12.0	160	1.0 ± 0.1	2.3 ± 0.1	3.8 ± 0.2	2.8 ± 0.2

Table 1—Continued

Name (HELGA)	R.A. (2000)	Dec. (2000)	X [kpc]	Y [kpc]	R [kpc]	FWHM [pc]	$S_{350\mu m}$ [Jy]	$S_{250\mu m}$ [Jy]	$S_{160\mu m}$ [Jy]	$S_{100\mu m}$ [Jy]
166	00 ^h 45 ^m 01 ^s .5	41° 32′ 31″	-6.6	-10.2	12.2	140	0.25 ± 0.02	0.52 ± 0.03	0.68 ± 0.11	< 0.37
167	00 ^h 44 ^m 32 ^s .9	41° 23′ 55″	-4.3	-11.4	12.1	78	0.16 ± 0.01	0.39 ± 0.03	0.47 ± 0.10	0.22 ± 0.06
168	00 ^h 44 ^m 33 ^s .4	41° 24′ 58″	-4.5	-10.8	11.7	78	0.047 ± 0.008	0.12 ± 0.02	0.18 ± 0.03	0.11 ± 0.03
169	00 ^h 44 ^m 38 ^s .3	41° 25′ 13″	-4.7	-11.4	12.3	78	0.23 ± 0.02	0.66 ± 0.04	0.95 ± 0.10	1.1 ± 0.1
170	00 ^h 44 ^m 43 ^s .7	41° 27′ 41″	-5.2	-10.6	11.8	210	4.2 ± 0.1	8.8 ± 0.1	13. ± 1.	6.9 ± 0.3
171	00 ^h 44 ^m 55 ^s .8	41° 29′ 18″	-5.9	-11.4	12.8	84	0.23 ± 0.01	0.56 ± 0.03	0.82 ± 0.09	0.52 ± 0.06
172	00 ^h 44 ^m 51 ^s .0	41° 29′ 41″	-5.8	-10.4	11.9	78	0.12 ± 0.01	0.30 ± 0.02	0.42 ± 0.05	0.19 ± 0.04
173	00 ^h 44 ^m 48 ^s .7	41° 30′ 37″	-5.9	-9.5	11.2	82	0.098 ± 0.012	0.22 ± 0.02	0.31 ± 0.03	0.15 ± 0.03
174	00 ^h 44 ^m 23 ^s .9	41° 20′ 54″	-3.5	-11.9	12.4	170	0.96 ± 0.06	2.3 ± 0.1	4.0 ± 0.2	2.9 ± 0.2
175	00 ^h 44 ^m 12 ^s .4	41° 19′ 27″	-2.9	-11.1	11.5	290	0.59 ± 0.03	1.3 ± 0.1	1.7 ± 0.1	0.84 ± 0.08
176	00 ^h 45 ^m 00 ^s .3	41° 28′ 36″	-5.8	-12.5	13.8	78	0.056 ± 0.013	0.15 ± 0.02	< 0.22	0.31 ± 0.03
177	00 ^h 44 ^m 24 ^s .1	41° 24′ 38″	-4.2	-9.6	10.5	100	0.34 ± 0.02	0.69 ± 0.03	0.95 ± 0.06	0.52 ± 0.05
178	00 ^h 44 ^m 10 ^s .1	41° 16′ 27″	-2.3	-12.7	12.9	120	0.21 ± 0.01	0.47 ± 0.02	0.54 ± 0.05	0.31 ± 0.04
179	00 ^h 43 ^m 55 ^s .8	41° 16′ 49″	-2.0	-10.3	10.5	78	0.095 ± 0.009	0.20 ± 0.01	0.20 ± 0.03	< 0.048
180	00 ^h 45 ^m 35 ^s .3	41° 58′ 02″	-12.0	0.9	12.1	100	0.078 ± 0.010	0.16 ± 0.01	0.18 ± 0.04	0.099 ± 0.030
181	00 ^h 44 ^m 06 ^s .2	41° 21′ 05″	-3.1	-9.2	9.7	140	0.63 ± 0.02	1.3 ± 0.1	1.8 ± 0.1	0.94 ± 0.06
182	00 ^h 45 ^m 32 ^s .2	41° 58′ 56″	-12.1	1.9	12.3	78	0.11 ± 0.01	0.24 ± 0.02	0.37 ± 0.05	0.18 ± 0.05
183	00 ^h 44 ^m 27 ^s .3	41° 27′ 25″	-4.8	-8.3	9.6	78	0.11 ± 0.01	0.20 ± 0.02	< 0.15	< 0.13
184	00 ^h 45 ^m 06 ^s .3	41° 51′ 36″	-10.1	1.1	10.2	240	2.4 ± 0.1	5.0 ± 0.1	5.5 ± 0.2	2.3 ± 0.1
185	00 ^h 45 ^m 44 ^s .4	41° 45′ 38″	-10.1	-8.3	13.1	97	0.14 ± 0.02	0.27 ± 0.02	0.34 ± 0.04	< 0.15
186	00 ^h 45 ^m 34 ^s .9	41° 42′ 49″	-9.3	-8.7	12.7	82	0.44 ± 0.02	0.90 ± 0.03	1.3 ± 0.1	0.83 ± 0.09
187	00 ^h 45 ^m 05 ^s .3	41° 39′ 08″	-7.9	-6.6	10.3	140	0.29 ± 0.02	0.69 ± 0.04	0.78 ± 0.05	0.43 ± 0.03
188	00 ^h 45 ^m 09 ^s .1	41° 40′ 15″	-8.2	-6.5	10.4	78	0.055 ± 0.009	0.12 ± 0.01	0.15 ± 0.02	< 0.085
189	00 ^h 44 ^m 37 ^s .4	41° 56′ 36″	-10.3	8.5	13.3	100	0.25 ± 0.01	0.53 ± 0.02	0.53 ± 0.07	0.20 ± 0.06
190	00 ^h 44 ^m 30 ^s .6	41° 56′ 34″	-10.1	9.5	13.9	78	0.050 ± 0.006	0.10 ± 0.01	< 0.099	0.093 ± 0.030
191	00 ^h 44 ^m 01 ^s .6	41° 49′ 09″	-8.0	9.1	12.1	78	1.1 ± 0.1	2.6 ± 0.1	3.1 ± 0.2	2.3 ± 0.2
192	00 ^h 43 ^m 56 ^s .6	41° 48′ 25″	-7.7	9.4	12.2	86	0.22 ± 0.01	0.58 ± 0.03	0.74 ± 0.10	0.65 ± 0.10
193	00 ^h 44 ^m 07 ^s .7	41° 50′ 33″	-8.4	9.1	12.4	100	0.060 ± 0.009	0.14 ± 0.02	< 0.12	< 0.11
194	00 ^h 43 ^m 57 ^s .3	41° 46′ 49″	-7.4	8.3	11.2	110	0.15 ± 0.01	0.33 ± 0.02	0.36 ± 0.07	< 0.22
195	00 ^h 44 ^m 37 ^s .6	41° 29′ 59″	-5.5	-8.3	9.9	86	0.33 ± 0.02	0.73 ± 0.03	0.77 ± 0.08	0.51 ± 0.05
196	00 ^h 45 ^m 00 ^s .2	41° 35′ 37″	-7.1	-8.1	10.7	78	0.068 ± 0.006	0.14 ± 0.01	0.14 ± 0.01	0.087 ± 0.011
197	00 ^h 43 ^m 31 ^s .6	41° 42′ 40″	-6.0	9.6	11.3	120	1.5 ± 0.1	3.3 ± 0.1	4.0 ± 0.2	2.1 ± 0.1
198	00 ^h 43 ^m 46 ^s .7	41° 44′ 14″	-6.7	8.3	10.7	86	0.35 ± 0.02	0.79 ± 0.03	1.2 ± 0.1	0.41 ± 0.06

Table 1—Continued

Name (HELGA)	R.A. (2000)	Dec. (2000)	X [kpc]	Y [kpc]	R [kpc]	FWHM [pc]	$S_{350\mu m}$ [Jy]	$S_{250\mu m}$ [Jy]	$S_{160\mu m}$ [Jy]	$S_{100\mu m}$ [Jy]
199	00 ^h 43 ^m 42 ^s .2	41° 45′ 14″	-6.8	9.6	11.7	110	0.83 ± 0.02	1.9 ± 0.1	2.8 ± 0.1	1.9 ± 0.1
200	00 ^h 43 ^m 21 ^s .6	41° 40′ 44″	-5.4	9.8	11.2	150	0.51 ± 0.02	1.1 ± 0.1	1.3 ± 0.1	0.78 ± 0.06
201	00 ^h 43 ^m 26 ^s .6	41° 41′ 59″	-5.8	9.9	11.4	78	0.066 ± 0.007	0.17 ± 0.01	0.28 ± 0.05	0.16 ± 0.03
202	00 ^h 43 ^m 55 ^s .7	41° 51′ 19″	-8.2	11.4	14.0	110	0.17 ± 0.01	0.32 ± 0.01	0.21 ± 0.04	< 0.16
203	00 ^h 42 ^m 55 ^s .4	40° 58′ 34″	2.9	-12.6	13.0	99	0.084 ± 0.008	0.17 ± 0.01	0.21 ± 0.03	0.090 ± 0.030
204	00 ^h 40 ^m 33 ^s .2	40° 55′ 35″	7.2	7.0	10.0	78	0.16 ± 0.01	0.31 ± 0.02	0.35 ± 0.06	0.15 ± 0.04
205	00 ^h 41 ^m 47 ^s .6	40° 51′ 55″	5.9	-6.5	8.8	85	0.12 ± 0.01	0.27 ± 0.02	0.30 ± 0.03	0.13 ± 0.03
206	00 ^h 40 ^m 33 ^s .1	40° 32′ 48″	11.3	-7.1	13.3	120	0.26 ± 0.01	0.56 ± 0.02	0.69 ± 0.04	0.50 ± 0.07
207	00 ^h 40 ^m 28 ^s .2	40° 54′ 25″	7.5	7.1	10.3	78	0.056 ± 0.006	0.11 ± 0.01	0.053 ± 0.018	< 0.033
208	00 ^h 41 ^m 29 ^s .4	41° 10′ 04″	3.1	7.5	8.1	78	0.038 ± 0.007	0.090 ± 0.010	0.13 ± 0.02	0.13 ± 0.01
209	00 ^h 40 ^m 52 ^s .3	40° 32′ 30″	10.8	-10.2	14.9	120	0.49 ± 0.02	1.0 ± 0.1	1.4 ± 0.1	0.85 ± 0.06
210	00 ^h 40 ^m 50 ^s .3	40° 31′ 35″	11.0	-10.5	15.2	78	0.054 ± 0.008	0.11 ± 0.01	0.083 ± 0.018	0.085 ± 0.019
211	00 ^h 41 ^m 20 ^s .0	41° 08′ 17″	3.6	7.8	8.6	78	0.062 ± 0.007	0.16 ± 0.01	0.23 ± 0.03	0.28 ± 0.02
212	00 ^h 42 ^m 20 ^s .4	40° 53′ 52″	4.6	-10.3	11.3	120	0.17 ± 0.01	0.33 ± 0.02	0.28 ± 0.03	< 0.083
213	00 ^h 42 ^m 13 ^s .5	40° 51′ 21″	5.3	-10.8	12.0	78	0.83 ± 0.03	1.8 ± 0.1	2.3 ± 0.1	1.9 ± 0.1
214	00 ^h 42 ^m 08 ^s .6	40° 50′ 46″	5.5	-10.4	11.8	97	0.098 ± 0.011	0.20 ± 0.02	0.19 ± 0.04	< 0.083
215	00 ^h 42 ^m 04 ^s .3	40° 52′ 41″	5.3	-8.6	10.1	130	0.25 ± 0.02	0.52 ± 0.02	0.46 ± 0.06	0.23 ± 0.06
216	00 ^h 43 ^m 41 ^s .9	41° 48′ 03″	-7.3	11.4	13.5	84	0.096 ± 0.008	0.16 ± 0.01	0.17 ± 0.03	< 0.075
217	00 ^h 40 ^m 11 ^s .8	40° 41′ 45″	10.2	1.7	10.4	160	0.27 ± 0.01	0.53 ± 0.02	0.70 ± 0.06	0.26 ± 0.07
218	00 ^h 45 ^m 17 ^s .3	42° 03′ 42″	-12.6	7.1	14.4	250	1.1 ± 0.1	2.1 ± 0.1	2.3 ± 0.1	0.93 ± 0.10
219	00 ^h 43 ^m 40 ^s .7	41° 40′ 11″	-5.8	6.6	8.8	100	0.37 ± 0.02	0.80 ± 0.03	0.89 ± 0.12	< 0.28
220	00 ^h 40 ^m 13 ^s .8	40° 33′ 18″	11.7	-3.8	12.3	230	0.62 ± 0.02	1.2 ± 0.1	1.4 ± 0.1	0.59 ± 0.10
221	00 ^h 42 ^m 09 ^s .5	40° 54′ 19″	4.8	-8.3	9.7	130	0.32 ± 0.01	0.63 ± 0.01	0.71 ± 0.05	0.30 ± 0.07
222	00 ^h 41 ^m 58 ^s .6	40° 59′ 14″	4.3	-3.6	5.6	140	0.32 ± 0.02	0.73 ± 0.03	1.0 ± 0.1	0.46 ± 0.07
223	00 ^h 40 ^m 36 ^s .1	41° 01′ 24″	6.0	10.2	11.9	97	0.37 ± 0.01	0.80 ± 0.02	1.0 ± 0.1	0.46 ± 0.06
224	00 ^h 44 ^m 43 ^s .1	41° 21′ 22″	-4.1	-14.5	15.1	78	0.090 ± 0.008	0.24 ± 0.01	0.30 ± 0.05	0.20 ± 0.01
225	00 ^h 45 ^m 10 ^s .2	42° 01′ 32″	-12.0	6.8	13.8	89	0.11 ± 0.01	0.18 ± 0.01	0.12 ± 0.02	0.18 ± 0.03
226	00 ^h 44 ^m 59 ^s .2	41° 59′ 19″	-11.3	7.0	13.3	200	0.94 ± 0.04	1.7 ± 0.1	1.7 ± 0.1	0.54 ± 0.12
227	00 ^h 45 ^m 01 ^s .1	42° 02′ 09″	-11.9	8.5	14.6	78	0.053 ± 0.006	0.12 ± 0.01	0.15 ± 0.02	0.058 ± 0.008
228	00 ^h 40 ^m 17 ^s .7	40° 44′ 23″	9.6	2.5	9.9	260	0.26 ± 0.02	0.52 ± 0.02	0.65 ± 0.06	< 0.30
229	00 ^h 44 ^m 46 ^s .6	41° 36′ 36″	-6.9	-5.4	8.8	110	0.10 ± 0.01	0.21 ± 0.01	0.23 ± 0.04	< 0.071
230	00 ^h 45 ^m 01 ^s .5	41° 41′ 56″	-8.3	-4.3	9.3	290	1.3 ± 0.1	2.7 ± 0.1	2.7 ± 0.1	1.2 ± 0.1
231	00 ^h 44 ^m 02 ^s .3	41° 42′ 38″	-6.8	5.0	8.4	130	0.19 ± 0.01	0.43 ± 0.02	0.47 ± 0.07	< 0.23

Table 1—Continued

Name (HELGA)	R.A. (2000)	Dec. (2000)	X [kpc]	Y [kpc]	R [kpc]	FWHM [pc]	$S_{350\mu m}$ [Jy]	$S_{250\mu m}$ [Jy]	$S_{160\mu m}$ [Jy]	$S_{100\mu m}$ [Jy]
232	00 ^h 43 ^m 49 ^s .4	41° 30′ 39″	-4.3	-0.7	4.4	190	1.3 ± 0.1	2.7 ± 0.1	3.3 ± 0.1	1.6 ± 0.1
233	00 ^h 43 ^m 15 ^s .9	41° 45′ 09″	-6.1	13.5	14.8	78	0.057 ± 0.008	0.14 ± 0.01	0.18 ± 0.02	0.17 ± 0.04
234	00 ^h 43 ^m 29 ^s .2	41° 48′ 47″	-7.1	13.7	15.4	100	0.14 ± 0.01	0.26 ± 0.02	0.19 ± 0.04	0.12 ± 0.04
235	00 ^h 43 ^m 40 ^s .2	41° 29′ 20″	-3.9	-0.1	3.9	88	0.072 ± 0.008	0.17 ± 0.01	0.21 ± 0.03	0.093 ± 0.021
236	00 ^h 43 ^m 52 ^s .1	41° 33′ 46″	-5.0	0.9	5.0	110	0.95 ± 0.02	2.0 ± 0.1	2.2 ± 0.2	0.76 ± 0.10
237	00 ^h 43 ^m 43 ^s .5	41° 32′ 00″	-4.4	1.1	4.5	97	0.069 ± 0.007	0.17 ± 0.01	0.15 ± 0.02	0.092 ± 0.029
238	00 ^h 44 ^m 12 ^s .9	41° 35′ 12″	-5.8	-1.3	5.9	81	0.29 ± 0.02	0.55 ± 0.05	0.49 ± 0.11	< 0.14
239	00 ^h 44 ^m 13 ^s .2	41° 34′ 11″	-5.6	-2.0	5.9	78	0.10 ± 0.02	0.24 ± 0.03	< 0.33	< 0.20
240	00 ^h 44 ^m 11 ^s .7	41° 33′ 15″	-5.4	-2.3	5.9	78	0.094 ± 0.019	0.25 ± 0.04	< 0.40	0.36 ± 0.09
241	00 ^h 44 ^m 00 ^s .4	41° 37′ 07″	-5.8	1.8	6.0	280	0.87 ± 0.03	1.8 ± 0.1	1.6 ± 0.1	0.44 ± 0.07
242	00 ^h 44 ^m 25 ^s .2	41° 37′ 40″	-6.5	-1.6	6.7	86	0.51 ± 0.03	1.1 ± 0.1	1.1 ± 0.2	0.52 ± 0.08
243	00 ^h 44 ^m 23 ^s .2	41° 38′ 36″	-6.7	-0.7	6.7	78	0.038 ± 0.010	0.089 ± 0.020	< 0.14	< 0.10
244	00 ^h 44 ^m 11 ^s .9	41° 38′ 56″	-6.4	1.2	6.5	150	0.15 ± 0.01	0.34 ± 0.02	0.28 ± 0.05	< 0.11
245	00 ^h 44 ^m 09 ^s .8	41° 31′ 54″	-5.1	-2.9	5.9	94	0.074 ± 0.011	0.21 ± 0.02	0.32 ± 0.07	0.22 ± 0.04
246	00 ^h 44 ^m 15 ^s .0	41° 32′ 08″	-5.3	-3.5	6.3	78	0.056 ± 0.010	0.14 ± 0.02	< 0.17	< 0.071
247	00 ^h 44 ^m 30 ^s .4	41° 36′ 16″	-6.4	-3.2	7.2	180	0.32 ± 0.02	0.70 ± 0.02	0.92 ± 0.11	0.58 ± 0.07
248	00 ^h 44 ^m 39 ^s .2	41° 34′ 18″	-6.3	-5.8	8.6	78	0.12 ± 0.01	0.23 ± 0.01	0.19 ± 0.03	< 0.11
249	00 ^h 43 ^m 06 ^s .7	41° 12′ 40″	0.0	-5.5	5.5	150	0.57 ± 0.03	1.4 ± 0.1	2.2 ± 0.1	1.0 ± 0.1
250	00 ^h 41 ^m 05 ^s .8	40° 52′ 09″	6.9	-0.0	6.9	120	0.13 ± 0.01	0.27 ± 0.01	0.34 ± 0.05	0.12 ± 0.04
251	00 ^h 46 ^m 03 ^s .4	41° 52′ 33″	-11.8	-6.8	13.6	78	0.061 ± 0.010	0.14 ± 0.01	0.18 ± 0.03	< 0.078
252	00 ^h 40 ^m 12 ^s .6	40° 30′ 57″	12.2	-5.1	13.2	100	0.096 ± 0.010	0.20 ± 0.01	0.15 ± 0.02	< 0.11
253	00 ^h 40 ^m 05 ^s .6	40° 30′ 02″	12.5	-4.6	13.3	120	0.12 ± 0.01	0.25 ± 0.01	0.35 ± 0.03	0.082 ± 0.025
254	00 ^h 42 ^m 41 ^s .4	41° 14′ 39″	0.3	-0.5	0.6	120	0.19 ± 0.01	0.55 ± 0.02	1.5 ± 0.1	2.1 ± 0.1
255	00 ^h 40 ^m 14 ^s .7	40° 29′ 27″	12.4	-6.3	13.9	350	0.25 ± 0.02	0.53 ± 0.02	0.37 ± 0.06	< 0.17
256	00 ^h 40 ^m 10 ^s .2	40° 45′ 18″	9.6	4.2	10.5	100	0.25 ± 0.01	0.50 ± 0.02	0.66 ± 0.04	0.48 ± 0.04
257	00 ^h 42 ^m 42 ^s .7	41° 17′ 18″	-0.2	1.0	1.0	78	0.090 ± 0.012	0.29 ± 0.03	0.65 ± 0.08	0.96 ± 0.15
258	00 ^h 42 ^m 47 ^s .2	41° 16′ 30″	-0.1	-0.2	0.2	130	0.086 ± 0.007	0.32 ± 0.02	0.95 ± 0.08	1.7 ± 0.1
259	00 ^h 46 ^m 11 ^s .7	41° 52′ 29″	-12.0	-8.0	14.4	220	0.25 ± 0.02	0.50 ± 0.02	0.64 ± 0.04	0.45 ± 0.07
260	00 ^h 41 ^m 38 ^s .3	40° 38′ 10″	8.6	-13.7	16.2	300	0.25 ± 0.01	0.46 ± 0.01	0.31 ± 0.06	0.24 ± 0.06
261	00 ^h 41 ^m 02 ^s .1	40° 59′ 27″	5.7	5.1	7.6	110	0.11 ± 0.01	0.23 ± 0.01	0.22 ± 0.03	0.14 ± 0.03
262	00 ^h 43 ^m 18 ^s .4	41° 25′ 09″	-2.5	0.5	2.6	220	0.17 ± 0.01	0.43 ± 0.01	0.53 ± 0.05	0.29 ± 0.04
263	00 ^h 45 ^m 55 ^s .1	41° 56′ 42″	-12.3	-2.9	12.7	78	0.048 ± 0.008	0.12 ± 0.01	0.15 ± 0.03	0.21 ± 0.04
264	00 ^h 42 ^m 09 ^s .5	41° 28′ 32″	-1.3	13.0	13.1	78	0.045 ± 0.008	0.12 ± 0.01	0.15 ± 0.03	0.15 ± 0.04

Table 1—Continued

Name (HELGA)	R.A. (2000)	Dec. (2000)	X [kpc]	Y [kpc]	R [kpc]	FWHM [pc]	$S_{350\mu m}$ [Jy]	$S_{250\mu m}$ [Jy]	$S_{160\mu m}$ [Jy]	$S_{100\mu m}$ [Jy]
265	00 ^h 40 ^m 58 ^s .4	40° 50′ 44″	7.4	0.2	7.4	100	0.13 ± 0.01	0.28 ± 0.01	0.39 ± 0.04	< 0.11
266	00 ^h 41 ^m 25 ^s .5	40° 36′ 21″	9.3	-12.9	15.8	140	0.30 ± 0.02	0.57 ± 0.01	0.64 ± 0.06	< 0.25
267	00 ^h 41 ^m 18 ^s .8	40° 57′ 04″	5.7	1.0	5.8	340	0.40 ± 0.02	0.86 ± 0.02	0.82 ± 0.07	0.34 ± 0.07
268	00 ^h 41 ^m 51 ^s .7	41° 24′ 40″	-0.2	13.2	13.2	78	0.13 ± 0.01	0.40 ± 0.02	0.52 ± 0.02	0.62 ± 0.04
269	00 ^h 39 ^m 39 ^s .3	40° 28′ 54″	13.4	-1.3	13.5	170	4.1 ± 0.1	7.6 ± 0.1	8.4 ± 0.3	3.5 ± 0.3
270	00 ^h 39 ^m 18 ^s .8	40° 21′ 52″	15.2	-2.5	15.4	86	2.1 ± 0.1	4.0 ± 0.1	5.1 ± 0.2	3.3 ± 0.2
271	00 ^h 39 ^m 10 ^s .0	40° 26′ 12″	14.7	1.6	14.8	240	0.30 ± 0.01	0.49 ± 0.02	0.40 ± 0.05	0.14 ± 0.03
272	00 ^h 39 ^m 06 ^s .6	40° 29′ 18″	14.2	4.0	14.8	310	0.45 ± 0.02	0.83 ± 0.02	0.64 ± 0.08	0.28 ± 0.06
273	00 ^h 39 ^m 43 ^s .3	40° 20′ 39″	14.8	-7.0	16.4	200	1.8 ± 0.1	3.6 ± 0.1	5.9 ± 0.1	4.2 ± 0.1
274	00 ^h 39 ^m 39 ^s .3	40° 19′ 25″	15.1	-7.1	16.7	78	0.047 ± 0.008	0.11 ± 0.01	0.17 ± 0.02	0.12 ± 0.02
275	00 ^h 39 ^m 30 ^s .5	40° 21′ 05″	15.1	-4.7	15.8	78	0.065 ± 0.007	0.14 ± 0.01	0.22 ± 0.03	0.17 ± 0.03
276	00 ^h 39 ^m 59 ^s .2	40° 20′ 45″	14.4	-9.3	17.1	230	0.52 ± 0.02	0.92 ± 0.02	0.73 ± 0.08	0.30 ± 0.06
277	00 ^h 39 ^m 52 ^s .2	40° 26′ 48″	13.5	-4.5	14.2	410	0.68 ± 0.02	1.2 ± 0.1	1.5 ± 0.1	0.40 ± 0.10
278	00 ^h 42 ^m 32 ^s .2	40° 51′ 48″	4.7	-13.4	14.2	93	0.15 ± 0.01	0.26 ± 0.01	0.28 ± 0.05	< 0.16
279	00 ^h 41 ^m 49 ^s .4	40° 49′ 46″	6.2	-8.1	10.2	86	0.071 ± 0.006	0.15 ± 0.01	0.13 ± 0.02	< 0.077
280	00 ^h 42 ^m 06 ^s .2	41° 09′ 30″	2.2	1.6	2.7	200	0.14 ± 0.01	0.31 ± 0.02	0.34 ± 0.04	0.22 ± 0.03
281	00 ^h 42 ^m 12 ^s .2	41° 10′ 54″	1.8	1.6	2.4	160	0.15 ± 0.01	0.39 ± 0.02	0.63 ± 0.05	0.53 ± 0.04
282	00 ^h 42 ^m 34 ^s .8	41° 13′ 28″	0.7	-0.2	0.8	180	0.36 ± 0.01	0.95 ± 0.03	2.2 ± 0.1	2.3 ± 0.1
283	00 ^h 40 ^m 41 ^s .0	40° 30′ 00″	11.6	-10.0	15.3	120	0.22 ± 0.01	0.46 ± 0.01	0.48 ± 0.04	< 0.23
284	00 ^h 40 ^m 27 ^s .1	40° 27′ 51″	12.3	-9.2	15.4	99	0.14 ± 0.01	0.27 ± 0.01	0.36 ± 0.05	0.27 ± 0.06
285	00 ^h 40 ^m 11 ^s .5	40° 24′ 18″	13.4	-9.0	16.2	170	0.39 ± 0.02	0.72 ± 0.02	0.74 ± 0.07	0.50 ± 0.06
286	00 ^h 39 ^m 37 ^s .8	40° 35′ 30″	12.3	3.0	12.6	140	0.26 ± 0.02	0.49 ± 0.01	0.59 ± 0.07	< 0.27
287	00 ^h 45 ^m 29 ^s .4	42° 06′ 37″	-13.4	7.2	15.2	210	0.38 ± 0.02	0.67 ± 0.02	0.55 ± 0.07	0.19 ± 0.06
288	00 ^h 41 ^m 48 ^s .4	41° 06′ 32″	3.2	2.5	4.0	86	0.11 ± 0.01	0.29 ± 0.01	0.46 ± 0.03	0.28 ± 0.03
289	00 ^h 46 ^m 31 ^s .5	41° 59′ 39″	-13.8	-6.4	15.2	290	2.3 ± 0.1	4.4 ± 0.1	5.6 ± 0.2	2.4 ± 0.3
290	00 ^h 46 ^m 33 ^s .2	41° 56′ 55″	-13.4	-8.4	15.8	120	0.17 ± 0.01	0.29 ± 0.01	0.30 ± 0.04	0.21 ± 0.05
291	00 ^h 46 ^m 34 ^s .0	42° 11′ 35″	-16.0	0.8	16.0	78	0.19 ± 0.01	0.53 ± 0.02	0.94 ± 0.09	1.2 ± 0.1
292	00 ^h 46 ^m 32 ^s .9	42° 12′ 36″	-16.2	1.6	16.2	78	0.027 ± 0.005	0.073 ± 0.008	0.099 ± 0.028	< 0.13
293	00 ^h 46 ^m 23 ^s .1	42° 12′ 15″	-15.8	2.8	16.1	140	0.17 ± 0.01	0.34 ± 0.01	0.37 ± 0.05	0.10 ± 0.03
294	00 ^h 46 ^m 31 ^s .3	42° 13′ 37″	-16.3	2.5	16.5	78	0.063 ± 0.008	0.16 ± 0.01	0.27 ± 0.03	0.25 ± 0.03
295	00 ^h 46 ^m 36 ^s .6	42° 08′ 15″	-15.5	-1.7	15.6	190	0.50 ± 0.02	0.91 ± 0.02	1.00 ± 0.06	0.49 ± 0.10
296	00 ^h 46 ^m 44 ^s .7	42° 04′ 59″	-15.1	-5.0	15.9	250	0.52 ± 0.02	0.85 ± 0.02	0.50 ± 0.15	0.45 ± 0.15
297	00 ^h 46 ^m 08 ^s .4	42° 11′ 26″	-15.3	4.5	15.9	85	0.30 ± 0.02	0.61 ± 0.02	0.94 ± 0.06	0.74 ± 0.06

Table 1—Continued

Name (HELGA)	R.A. (2000)	Dec. (2000)	X [kpc]	Y [kpc]	R [kpc]	FWHM [pc]	$S_{350\mu m}$ [Jy]	$S_{250\mu m}$ [Jy]	$S_{160\mu m}$ [Jy]	$S_{100\mu m}$ [Jy]
298	00 ^h 45 ^m 58 ^s .6	42° 10′ 44″	-14.9	5.5	15.9	200	0.20 ± 0.02	0.36 ± 0.01	0.28 ± 0.04	< 0.19
299	00 ^h 45 ^m 50 ^s .7	42° 09′ 56″	-14.6	6.1	15.8	140	0.20 ± 0.01	0.40 ± 0.02	0.54 ± 0.07	0.35 ± 0.05
300	00 ^h 41 ^m 55 ^s .4	41° 02′ 14″	3.8	-1.3	4.0	160	0.64 ± 0.02	1.6 ± 0.1	2.5 ± 0.1	0.97 ± 0.11
301	00 ^h 41 ^m 19 ^s .6	41° 19′ 46″	1.6	15.0	15.1	93	1.0 ± 0.1	1.9 ± 0.1	2.2 ± 0.1	1.8 ± 0.1
302	00 ^h 41 ^m 52 ^s .6	41° 26′ 53″	-0.6	14.5	14.5	150	0.30 ± 0.01	0.51 ± 0.01	0.52 ± 0.04	0.23 ± 0.05
303	00 ^h 46 ^m 19 ^s .3	41° 50′ 26″	-11.8	-10.4	15.8	97	0.083 ± 0.007	0.18 ± 0.01	0.13 ± 0.03	0.11 ± 0.02
304	00 ^h 39 ^m 13 ^s .9	40° 41′ 54″	11.7	10.6	15.8	190	2.1 ± 0.1	3.6 ± 0.1	4.1 ± 0.3	1.4 ± 0.2
305	00 ^h 39 ^m 51 ^s .1	40° 53′ 28″	8.7	12.1	14.9	220	0.68 ± 0.02	1.3 ± 0.1	1.9 ± 0.1	1.1 ± 0.1
306	00 ^h 39 ^m 39 ^s .8	40° 50′ 07″	9.6	11.8	15.2	180	0.44 ± 0.02	0.88 ± 0.02	1.2 ± 0.1	0.53 ± 0.09
307	00 ^h 39 ^m 54 ^s .7	40° 55′ 36″	8.2	12.9	15.3	100	0.13 ± 0.01	0.24 ± 0.01	0.43 ± 0.06	< 0.13
308	00 ^h 40 ^m 04 ^s .1	40° 58′ 50″	7.3	13.5	15.3	94	0.26 ± 0.01	0.56 ± 0.02	0.79 ± 0.06	0.63 ± 0.06
309	00 ^h 40 ^m 05 ^s .4	41° 00′ 17″	7.0	14.2	15.8	200	0.24 ± 0.01	0.46 ± 0.02	0.36 ± 0.07	< 0.23
310	00 ^h 40 ^m 15 ^s .8	41° 00′ 56″	6.7	13.0	14.6	150	0.30 ± 0.02	0.64 ± 0.01	0.95 ± 0.08	< 0.27
311	00 ^h 41 ^m 33 ^s .1	40° 58′ 24″	5.1	-0.3	5.1	170	0.28 ± 0.01	0.63 ± 0.01	0.71 ± 0.08	0.25 ± 0.06
312	00 ^h 46 ^m 03 ^s .1	41° 46′ 21″	-10.7	-10.6	15.1	78	0.069 ± 0.007	0.14 ± 0.01	0.12 ± 0.03	< 0.12
313	00 ^h 47 ^m 11 ^s .0	42° 07′ 45″	-16.3	-7.1	17.8	250	0.62 ± 0.02	0.94 ± 0.01	< 0.38	0.54 ± 0.12
314	00 ^h 42 ^m 56 ^s .1	41° 45′ 52″	-5.7	16.8	17.8	110	0.24 ± 0.01	0.42 ± 0.01	0.45 ± 0.07	< 0.18
315	00 ^h 46 ^m 19 ^s .3	42° 15′ 54″	-16.4	5.7	17.3	78	0.025 ± 0.004	0.082 ± 0.004	0.10 ± 0.01	< 0.064
316	00 ^h 43 ^m 52 ^s .6	41° 57′ 33″	-9.2	15.8	18.3	170	0.94 ± 0.02	1.7 ± 0.1	1.3 ± 0.2	1.9 ± 0.1
317	00 ^h 44 ^m 29 ^s .3	42° 03′ 53″	-11.3	14.3	18.3	420	0.75 ± 0.03	1.2 ± 0.1	0.76 ± 0.15	< 0.38
318	00 ^h 43 ^m 37 ^s .0	41° 54′ 45″	-8.3	16.3	18.3	260	0.47 ± 0.02	0.76 ± 0.02	0.84 ± 0.08	< 0.38
319	00 ^h 47 ^m 00 ^s .9	42° 26′ 25″	-19.4	6.3	20.4	890	2.2 ± 0.1	3.4 ± 0.1	1.6 ± 0.3	< 0.76
320	00 ^h 46 ^m 27 ^s .3	42° 20′ 14″	-17.4	7.3	18.8	78	0.15 ± 0.02	0.26 ± 0.01	< 0.24	< 0.17
321	00 ^h 47 ^m 47 ^s .9	42° 19′ 41″	-19.4	-4.9	20.0	260	0.53 ± 0.02	0.91 ± 0.01	0.79 ± 0.15	0.52 ± 0.15
322	00 ^h 46 ^m 09 ^s .7	42° 22′ 42″	-17.4	11.4	20.8	200	0.71 ± 0.02	1.2 ± 0.1	0.91 ± 0.12	< 0.50
323	00 ^h 44 ^m 10 ^s .2	42° 02′ 42″	-10.6	16.4	19.5	120	0.33 ± 0.01	0.71 ± 0.01	1.2 ± 0.1	0.85 ± 0.06
324	00 ^h 38 ^m 47 ^s .9	40° 41′ 05″	12.6	14.1	18.9	78	0.056 ± 0.006	0.12 ± 0.01	0.19 ± 0.02	0.17 ± 0.03
325	00 ^h 43 ^m 14 ^s .8	40° 54′ 20″	3.1	-18.2	18.5	110	0.23 ± 0.01	0.42 ± 0.01	0.38 ± 0.09	0.28 ± 0.07
326	00 ^h 47 ^m 13 ^s .1	41° 56′ 26″	-14.3	-14.6	20.5	78	0.050 ± 0.007	0.095 ± 0.006	< 0.12	< 0.088

The truncated tree contains 326 leaf-nodes. We assume that these *Herschel* 250 μ m identified sources, which as stated have no resolved substructure, are GMCs or associations of several GMCs and are hereafter referred to simply as clouds. Table 1 lists the properties of the clouds. The first column lists the catalog number (a dimensionless index assigned during the plotting of the dendrogram, see below). All positions and sizes are calculated from the moments of each source’s 250 μ m half-power contour. The second and third columns list the Right Ascension and Declination of the centroid of the half-power contour. The kiloparsec X and Y offsets in the rotated, deprojected frame ($\theta = 38^\circ$, $i = 77^\circ$) are listed in columns 4 and 5. Column 6 lists the Galactocentric Distance R of the clouds. The positional accuracy is on the order of the pixel size as the map is Nyquist sampled. Using the 350 μ m pixel grid this is 8 arcsec which equates to 30 pc along the un-deprojected x-axis and ~ 140 pc along the deprojected y-axis. Column 7 lists the geometric mean of the deconvolved FWHMs of each cloud.

The CSAR extraction produces a mask on the 350 μ m pixel grid for each cloud. Integrated flux densities are calculated by summing the pixels under each pixel mask at each wavelength. Before the fluxes were measured, the data were convolved to a common resolution (the SPIRE 350 μ m PSF, 24'' FWHM) using the Aniano et al. (2011) convolution kernels and then co-aligned on the 350 μ m pixel-grid (8'' pixel width). We estimate the local pixel rms for each cloud by calculating the standard deviation of the pixels immediately adjoining its bounding-contour. The level of this isocontour is subtracted as a background from the pixels interior to it before the flux summation is performed. Each cloud’s spectrum is color-corrected using the standard SPIRE (Bendo 2011) and PACS (Muller et al. 2011) factors in an iterative loop. The median correction at each wavelength was $< 2\%$. Most of the regions extracted by CSAR are larger than the telescope PSF (see Figure 5) so we use the SPIRE extended source calibration.

Herschel color-corrected fluxes at 350, 250, 160, and 100 μ m for each cloud are listed in columns 8 to 11 of Table 1. A 500 μ m flux is not listed as this data has a resolution lower than that of the extraction wavelength. One-sigma errors are listed for each cloud, these are the statistical errors based on the local pixel rms and do not include the systematic calibration uncertainties. Upper-limits are given for clouds whose measured flux was less than 3σ . Given that the majority of the clouds are extended, the calibration error is 12% for the SPIRE bands (Valtchanov 2011) and 10% for the PACS (Paladini et al. 2012).

4. Molecular Cloud Properties

4.1. Cloud Size

For each cloud, a major and minor FWHM is calculated from the moments of the half-power contour. The geometric mean of the deconvolved major and minor FWHMs is then taken as the cloud’s projected size as listed in column 7 of Table 1. The histogram of these sizes is shown in Figure 5. The vertical dotted-line shows the 350 μ m beam FWHM, this is equivalent to 93 pc at

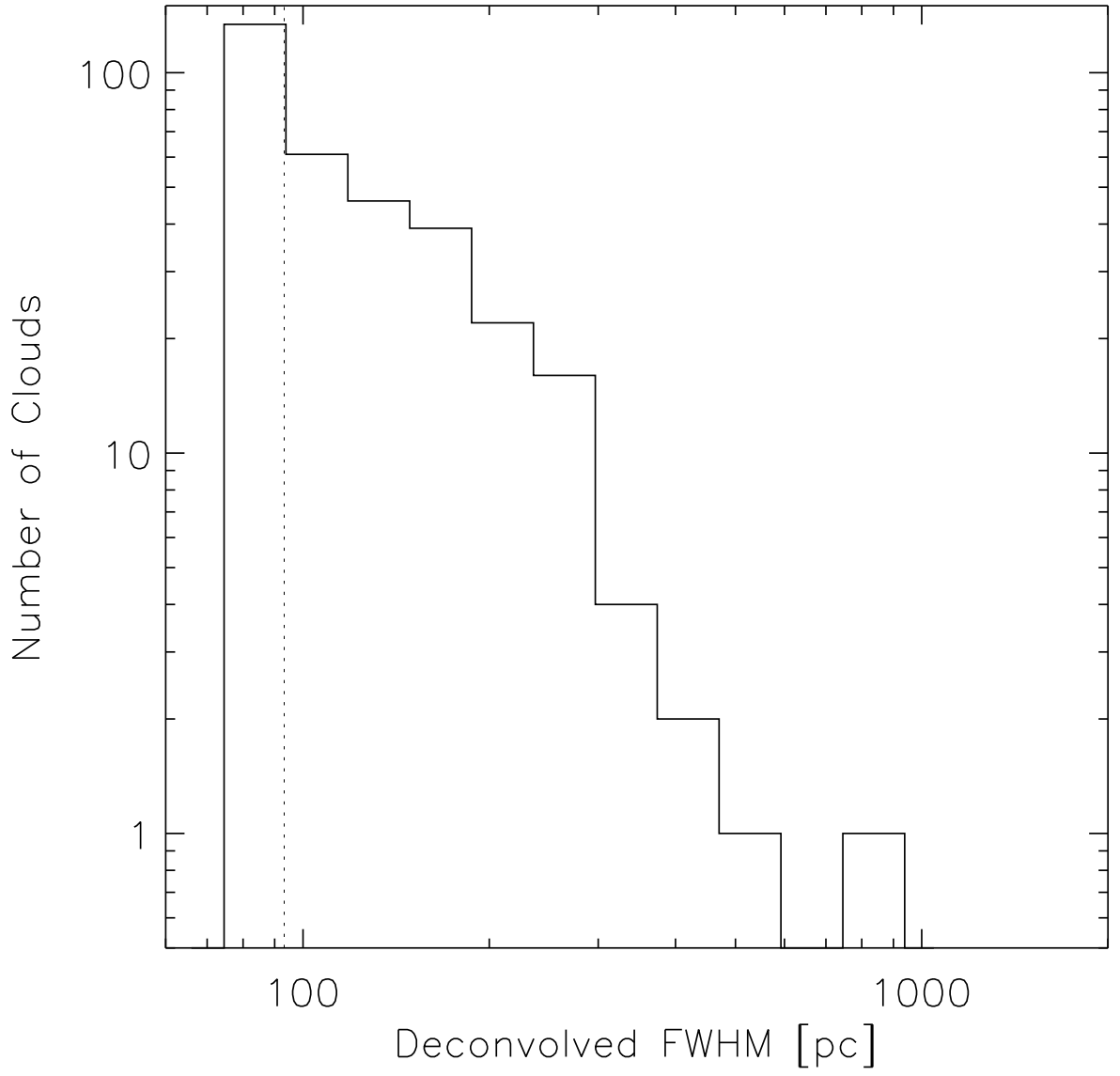


Fig. 5.— Histogram of deconvolved cloud FWHMs. The vertical dashed line shows the beam FWHM.

the assumed distance to M31. The bin to the left of this line is caused by the statistical scatter in the FWHM estimates for unresolved clouds (all data points inside it have a *deconvolved* FWHM that is within 0.5 pixels of the resolution limit). It is assumed that a cloud’s cross-section is not affected by the projection of M31.

The histogram shows a range of cloud sizes starting with unresolved sources. The majority of the clouds have sizes within 5 times the beam FWHM (~ 500 pc). There is one source that is larger than 700 pc, this is HELGA 319 located at $X=-19.4$, $Y=6.3$ which is a large, low-surface brightness feature. For comparison to these sizes, one of the nearest galactic GMCs, the Taurus molecular cloud, has a diameter of ~ 25 pc and the Gould Belt, the local system of GMCs, has a diameter of 1 kpc. Additionally, the mean size of a GMC in the Milky Way is ~ 40 pc (Solomon et al. 1979) and in the LMC is ~ 30 pc (Hughes et al. 2010). Thus, given this size distribution, the clouds we are extracting are probably complexes of GMCs and not the equivalent of individual GMCs. Comparison of cloud boundaries with published interferometry results (see Section 4.5) shows that these sources are indeed substructured below our resolution limits.

Figure 6 shows the number density of clouds (FIR sources) per square kiloparsec as a function of galactocentric distance. Error-bars are shown assuming normal errors. There is a clear downwards trend out to 20 kpc, this is the region where the contiguous $250\ \mu\text{m}$ emission from Andromeda – and thus the single-structure tree associated with it – blends into the background. The fraction of optical light from the disc has also dropped off significantly at this radius (Courteau et al. 2011) although the disc features can be detected out to 40 – 50 kpc (Ibata et al. 2005; Courteau et al. 2011; Fritz et al. 2012). While there is scatter in this plot, it does show a series of peaks at ~ 5 kpc intervals (i.e., 5, 11, and 15 kpc as shown by the dotted vertical lines) coincident with the observed rings at those distances. It is interesting to note that these follow the same pattern (~ 20 , 25, 30 kpc) of FIR features in M31’s outermost regions as detected by Paper I. These features could be a system of weak resonant rings (e.g., Jungwiert & Palous 1996; Buta 1999).

Also shown in Figure 6 is the number density of dark nebula (solid blue curve) from Hodge (1980) and the surface brightness profile of M31 at $3.6\ \mu\text{m}$ (dashed red curve). Both the dark nebulae and $3.6\ \mu\text{m}$ profiles have been normalized against the distribution of FIR clouds at a radius of 3–4 kpc. Both curves broadly follow the distribution of FIR clouds out to a radius of ~ 8 kpc with the exception of the peak at 5 kpc. The 10 kpc feature is seen as a significant enhancement above the $3.5\ \mu\text{m}$ profile, but it is not seen at all in the profile of dark nebulae. The distribution of dark nebulae drops off quite dramatically beyond 10 kpc. It is possible that this is a selection effect, the distribution of the dark nebulae is correlated with the surface brightness of the disc because it is that which determines the background contrast and thus the chance of detecting a dark nebulae (Jackson et al. 2008). Thus, it is possible that the optical surface brightness of M31 beyond 10 kpc may not have provided sufficient contrast to discern nebula against in the Hodge (1980) survey.

The peak of the size distribution of the Hodge (1980) dark nebulae is at $\sim 100 - 150$ pc, not dissimilar to our resolution limit. A comparison of positions between the Hodge (1980) dark nebulae

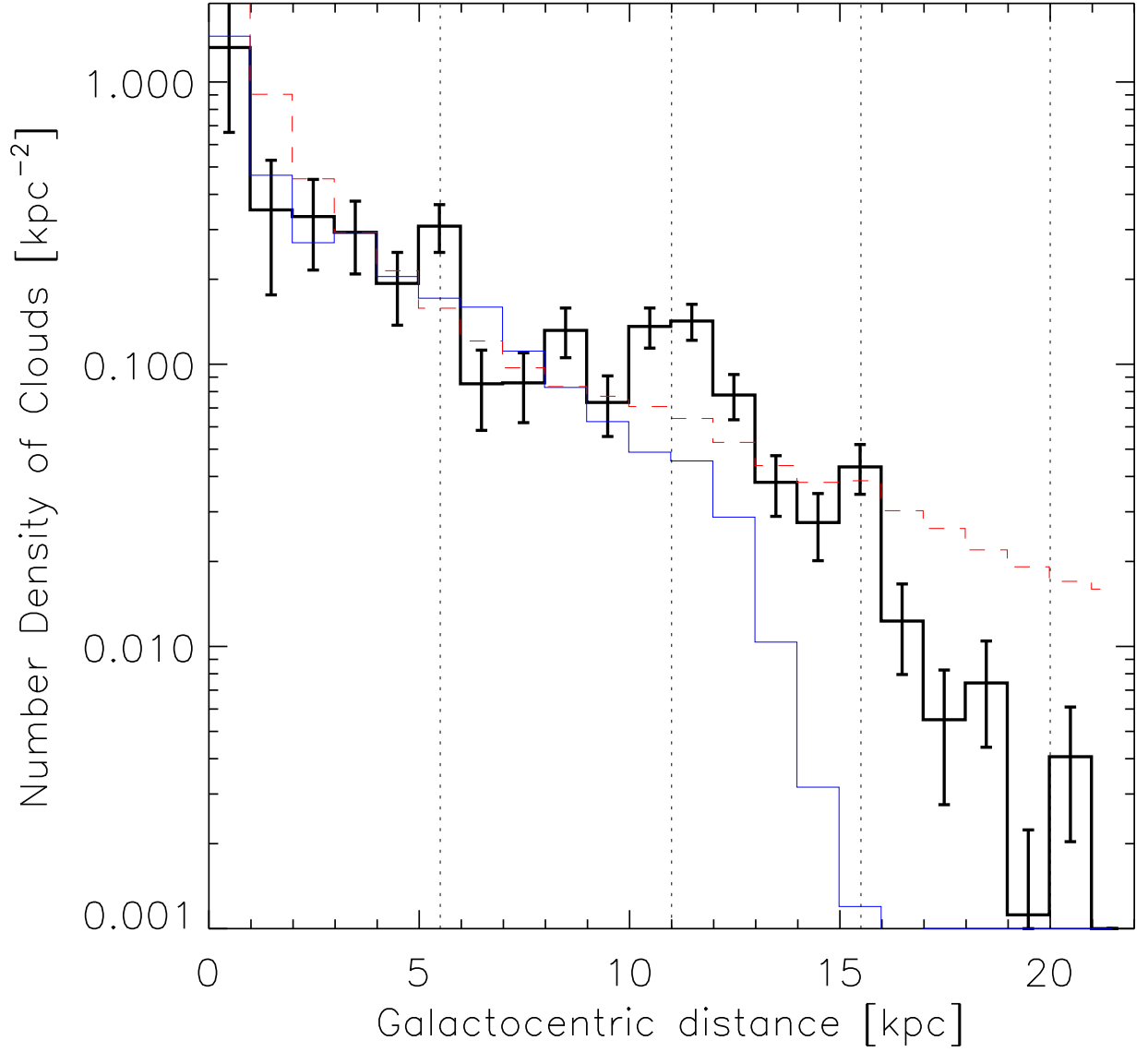


Fig. 6.— The number density of clouds with galactocentric distance. The vertical dashed line show the location of peaks coincident with ring structures. The solid blue curve shows the number density of dark nebulae from Hodge (1980) and the red dashed curve shows the surface brightness profile of M31 at $3.6\mu\text{m}$. Both the red and blue curves have been normalized against the black curve at 3-4 kpc.

and our FIR selected clouds shows that only about 5.8% of FIR cloud positions are within 100 pc of a dark nebulae reference position. This only increases to 17% if the search separation is increased to 200 pc. The large scale distribution of FIR emission in galaxies does correlate with gas column density (e.g. Neininger et al. 1996) so this discrepancy between features in the FIR data and the position of dark nebulae is interesting. Hodge (1980) himself noted the poor correlation between the distribution of dark nebulae and the distribution of atomic hydrogen. It is possible that dark nebulae poorly match the FIR clouds because they are just surface features seen *against* the bright disc of M31 (c.f. the $3.5\ \mu\text{m}$ profile) whereas the FIR clouds trace emission through the entire depth of the disc. A similar feature is seen in the distribution of infra-red dark clouds (IRDCs) in the plane of the Milky Way (Jackson et al. 2008). It is possible therefore that analyzing dark features (dark nebulae) in a disc may not give a true representation of the distribution of clouds in that galaxy (Wilcock et al. 2012).

4.2. Cloud Mass

4.2.1. Mass Calculation

For each cloud that has a flux measurement with $S/N > 3\sigma$ at 3 or more wavelengths between 100–350 μm we follow Paper II and fit a modified-blackbody function of the form

$$S_\nu = \frac{B_\nu(T_d)\kappa_\nu M_d}{D^2}, \quad (1)$$

where S_ν is the flux density at frequency ν , $B_\nu(T_d)$ is the Planck Function for a blackbody with temperature T_d , M_d is the dust mass, and D is the distance to the source. The dust absorption coefficient, κ_ν , was parameterized as a power-law with the form $\kappa_\nu \propto \nu^\beta$ where β is the dust emissivity index. The dust absorption coefficient was scaled from a reference value of $0.192\ \text{cm}^2\ \text{g}^{-1}$ at 350 μm (Draine 2003). This value is the same as used for Paper I and Paper II. The uncertainty in κ_ν could be as large as a few and is ignored when quoting uncertainties on the mass estimates. The value of β for each cloud was estimated using the cloud’s galactocentric distance and the radial dust emissivity relationship from Paper II.

We convert the dust mass, M_d , into a total mass (i.e., gas and dust), M_{cloud} , taking into account the metallicity gradient in M31 by using the radial dust-to-gas relationship from Paper II. There are therefore only two free parameters, T and M_{cloud} , for each fit. The Levenberg-Marquardt least-squares minimization package MPFIT (Markwardt 2009) was used for all fitting and the fitting was done in $\log \nu$ vs. $\log \nu F_\nu$ parameter space. Hereafter, quoted cloud masses refer to the total mass of dust and gas unless stated otherwise.

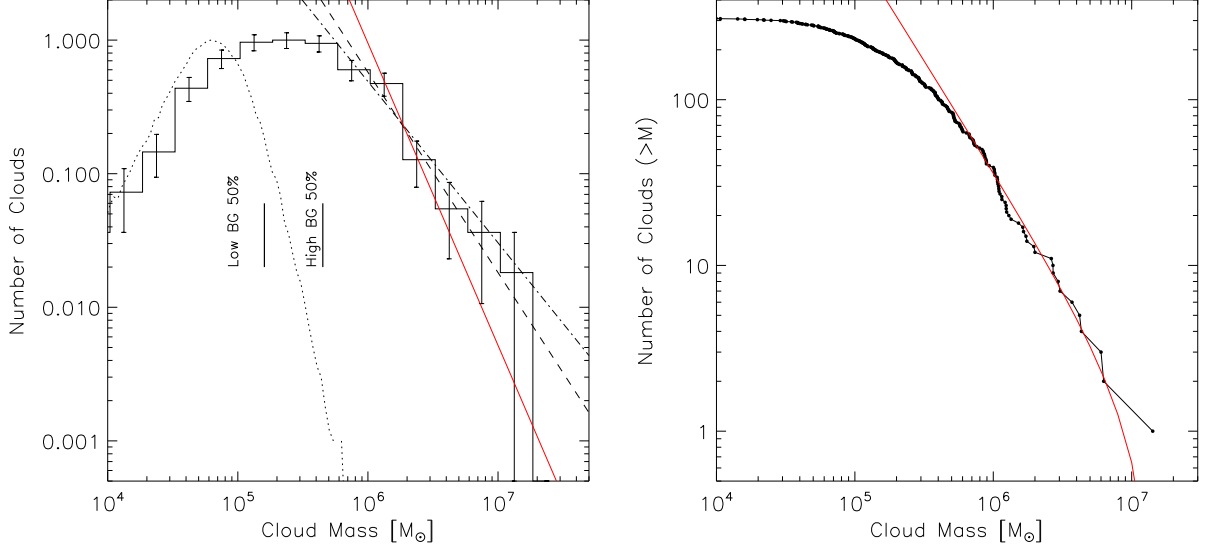


Fig. 7.— The mass distribution of clouds in M31. The solid red curves on both plots shows mass distributions calculated from a truncated powerlaw with an exponent $\alpha_M = 2.34 \pm 0.12$ (equivalent to an exponent of $2.34 - 1$ in the cumulative case, see text for more details). **(left)** Histogram of M_{cloud} . The dot-dashed powerlaw has an exponent of 1.21 and is a least-squares fit to the normal histogram. This is significantly different than that found via the MML method (i.e. 2.34). The dashed powerlaw show the equivalent $\alpha = 1.5$ powerlaw for Milky Way clouds. The bars along the bottom edge show the 50% point source completeness for low and highly structured background (see text for explanation). The dotted line shows our equivalent point source sensitivity once variations of dust temperature and properties have been accounted for. **(right)** A cumulative histogram of total cloud mass for the M31 clouds.

Table 2. Table of SED parameters.

Name (HELGA)	M_{cloud} [$10^5 M_{\odot}$]	T [K]	L_{FIR} [$10^5 L_{\odot}$]	L_{CO} [$10^4 \text{ K km s}^{-1} \text{ pc}^2$]
1	8.7	23	15.	...
2	2.9	21	4.0	...
3	2.4	16	4.2	2.2
4	1.9	16	4.1	3.4
5	1.9	16	2.7	6.6
6	0.72	16	1.1	< 0.59
7	2.6	18	10.	2.4
8	1.2	18	5.3	< 3.8
9	0.78	18	2.1	< 2.7
10	8.9	16	13.	22.
11	0.54	18	1.9	< 1.1
12	2.7	16	4.5	5.9
13	0.71	16	1.1	< 1.1
14	5.0	17	8.8	9.7
15	0.84	16	1.3	< 1.1
16	0.32	16	0.55	< 0.84
17	5.9	16	7.8	11.
18	0.63	16	0.81	1.4
19	0.83	16	1.4	< 1.6
20	1.2	16	1.8	< 2.9
21	5.3	16	11.	27.
22	< 0.62
23	1.5	19	8.6	6.0
24	1.5	16	1.9	3.7
25	0.11	18	0.41	< 0.54
26	3.8	18	12.	13.
27	17.	16	21.	34.
28	0.89	15	0.78	1.4
29	1.3	17	4.0	< 1.7
30	0.16	21	1.8	< 0.43
31	0.40	18	1.9	< 0.40

Table 2—Continued

Name (HELGA)	M_{cloud} [$10^5 M_{\odot}$]	T [K]	L_{FIR} [$10^5 L_{\odot}$]	L_{CO} [$10^4 \text{ K km s}^{-1} \text{ pc}^2$]
32	2.4	16	2.8	4.4
33	0.82	15	0.71	2.1
34	0.85	15	0.99	2.4
35	3.4	15	5.1	13.
36	5.2	19	36.	12.
37	0.32	22	5.0	< 0.84
38	0.30	18	1.3	< 0.48
39	1.3	18	5.3	4.8
40	3.2	16	7.2	6.8
41	0.099	24	2.3	< 0.46
42	2.9	17	6.9	8.1
43	1.5	19	5.4	3.2
44	0.96	19	3.3	2.0
45	1.2	16	1.4	2.4
46	2.0	17	3.3	3.8
47	1.2	16	1.2	2.6
48	4.2	19	14.	15.
49	1.5	14	0.96	< 2.5
50	2.2	16	4.2	6.2
51	0.22	17	0.62	< 0.51
52	2.0	18	6.3	< 2.2
53	2.2	18	2.8	3.4
54	2.0	16	1.5	1.6
55	7.2	18	9.2	12.
56	5.2	18	7.1	8.1
57	4.7	21	12.	3.7
58	2.9	16	2.0	2.6
59	3.8	18	3.0	2.8
60	< 1.3
61	27.	16	9.5	30.
62	2.3

Table 2—Continued

Name (HELGA)	M_{cloud} [$10^5 M_{\odot}$]	T [K]	L_{FIR} [$10^5 L_{\odot}$]	L_{CO} [$10^4 \text{ K km s}^{-1} \text{ pc}^2$]
63	60.	18	50.	56.
64	2.9	17	1.6	3.0
65	2.6	16	2.4	7.2
66	11.	17	5.5	14.
67	1.1	20	1.7	2.1
68	1.1	19	1.5	< 1.6
69	1.8	17	1.7	< 3.2
70	2.4
71	11.	19	23.	23.
72	0.22	19	0.49	< 0.49
73	1.7	18	2.1	11.
74	10.	18	15.	17.
75	2.1	16	1.3	< 4.2
76	2.2	18	2.9	2.0
77	0.54	20	1.2	< 1.2
78	7.2	21	24.	< 8.4
79	3.9	16	3.0	3.5
80	7.3	18	9.5	17.
81	4.0	21	10.0	3.4
82	5.1	17	5.1	< 6.0
83	1.2	19	1.7	< 2.5
84	1.5	16	0.67	< 3.0
85	2.3	18	2.3	< 4.4
86	< 1.3
87	4.3	20	8.5	7.5
88	2.9	19	4.2	8.1
89	1.5
90	3.7	18	6.8	7.9
91	0.94	15	0.46	< 1.4
92	1.1	20	3.1	< 1.9
93	1.00	19	2.3	1.5

Table 2—Continued

Name (HELGA)	M_{cloud} [$10^5 M_{\odot}$]	T [K]	L_{FIR} [$10^5 L_{\odot}$]	L_{CO} [$10^4 \text{ K km s}^{-1} \text{ pc}^2$]
94	0.39	23	2.7	< 0.65
95	0.39	18	0.80	< 0.57
96	8.9	17	10.	17.
97	0.49	21	0.91	< 0.58
98	11.	22	29.	29.
99	0.74	22	1.7	< 1.2
100	0.61	21	1.6	0.76
101	5.4	22	17.	< 9.2
102	1.1	20	2.0	< 4.3
103	0.65	20	1.4	< 3.9
104	0.39	21	0.98	< 0.91
105	6.0	18	5.6	5.8
106	1.8	17	1.5	2.4
107	1.7	17	2.3	2.3
108	0.51	17	0.74	< 1.0
109	3.6	16	2.9	2.8
110	4.7	18	4.1	5.5
111	6.7	19	8.3	7.4
112	1.1	18	1.1	< 1.7
113	1.9	17	1.8	2.7
114	3.7	16	2.9	2.6
115	10.	16	9.2	16.
116	4.8	17	5.9	< 5.8
117	10.	20	17.	15.
118	0.54	22	1.4	< 0.65
119	13.	21	29.	20.
120	1.6	22	3.3	1.1
121	7.2	17	5.4	14.
122	3.8	17	3.2	6.8
123	3.8	16	2.3	3.9
124	1.1	18	1.1	0.98

Table 2—Continued

Name (HELGA)	M_{cloud} [$10^5 M_{\odot}$]	T [K]	L_{FIR} [$10^5 L_{\odot}$]	L_{CO} [$10^4 \text{ K km s}^{-1} \text{ pc}^2$]
125	1.4	17	1.2	< 1.7
126	1.4
127	5.2	15	4.0	5.1
128	1.1	17	1.3	< 0.83
129	2.4	16	2.0	3.8
130	1.6	18	3.2	1.8
131	0.81	17	0.87	1.4
132	0.16	22	0.93	< 1.7
133	0.91	16	0.72	< 0.95
134	7.6	19	11.	12.
135	11.	18	11.	5.0
136	1.4	23	5.2	1.4
137	0.65	23	2.3	< 0.83
138	2.6	21	7.2	< 3.6
139	< 1.2
140	12.	18	12.	16.
141	1.1	17	0.71	1.4
142	12.	19	16.	20.
143	0.72	19	0.83	1.4
144	5.6	17	3.7	< 3.6
145	5.1	16	2.3	5.5
146	2.8	16	1.2	1.7
147	0.44	20	0.66	< 0.55
148	3.8	18	3.3	< 3.3
149	1.0	21	2.2	< 2.3
150	0.77	19	1.2	1.1
151	17.	18	18.	24.
152	0.89	15	0.33	2.1
153	0.83	19	1.3	1.2
154	0.67	19	0.79	< 0.61
155	1.7	18	1.7	2.0

Table 2—Continued

Name (HELGA)	M_{cloud} [$10^5 M_{\odot}$]	T [K]	L_{FIR} [$10^5 L_{\odot}$]	L_{CO} [$10^4 \text{ K km s}^{-1} \text{ pc}^2$]
156	11.	18	9.4	13.
157	3.1	21	6.2	3.5
158	2.4	19	2.9	< 2.5
159	1.8	18	1.9	< 1.9
160	2.6	19	3.2	< 3.8
161	0.38	23	1.3	0.72
162	6.0	21	13.	6.0
163	< 1.1
164	1.3	19	1.6	< 2.2
165	8.3	21	19.	4.3
166	2.9	19	2.9	2.5
167	2.0	19	2.0	2.6
168	0.44	20	0.81	< 0.84
169	1.6	24	6.6	< 1.2
170	43.	19	55.	43.
171	2.4	21	3.8	4.2
172	1.4	19	1.7	2.3
173	1.0	19	1.3	< 0.82
174	8.0	22	20.	< 9.2
175	6.8	18	7.1	10.
176	0.39	26	1.9	< 0.83
177	3.2	18	4.1	< 6.5
178	2.6	19	2.5	< 2.4
179	1.4	16	0.80	1.1
180	0.97	18	0.83	1.4
181	5.7	18	7.6	13.
182	1.2	20	1.5	< 1.5
183	1.5
184	29.	17	23.	44.
185	1.7	19	1.4	< 1.2
186	4.4	20	6.0	3.2

Table 2—Continued

Name (HELGA)	M_{cloud} [$10^5 M_{\odot}$]	T [K]	L_{FIR} [$10^5 L_{\odot}$]	L_{CO} [$10^4 \text{ K km s}^{-1} \text{ pc}^2$]
187	3.0	18	3.5	2.7
188	0.59	18	0.61	< 0.92
189	4.2	17	2.2	< 1.6
190	0.54	21	0.70	< 0.49
191	10.	20	16.	8.1
192	1.9	21	4.2	1.9
193	< 1.1
194	2.0	17	1.5	< 1.4
195	3.1	18	3.9	< 2.9
196	0.71	18	0.70	0.63
197	16.	18	17.	12.
198	4.3	18	4.1	3.0
199	7.4	20	14.	6.2
200	5.3	19	6.2	4.1
201	0.60	21	1.2	0.35
202	4.8	15	0.99	2.3
203	1.2	18	0.86	< 0.75
204	1.9	17	1.4	2.6
205	1.3	16	1.2	< 1.6
206	2.8	20	3.5	...
207	1.4	14	0.31	< 1.3
208	0.20	21	0.83	< 0.52
209	6.0	21	6.5	3.5
210	0.70	20	0.58	< 0.27
211	0.31	22	1.7	< 0.67
212	3.2	15	1.1	3.0
213	7.0	21	13.	11.
214	1.6	16	0.80	2.5
215	3.3	16	2.2	2.5
216	1.7	16	0.66	< 0.38
217	3.1	17	2.7	4.3

Table 2—Continued

Name (HELGA)	M_{cloud} [$10^5 M_{\odot}$]	T [K]	L_{FIR} [$10^5 L_{\odot}$]	L_{CO} [$10^4 \text{ K km s}^{-1} \text{ pc}^2$]
218	20.	18	9.5	7.7
219	4.0	17	3.7	3.9
220	8.6	17	5.8	...
221	3.7	17	2.9	8.1
222	2.3	17	4.0	< 2.6
223	4.5	18	4.1	3.9
224	1.2	21	1.5	1.5
225	0.99	20	1.1	0.92
226	17.	16	6.8	11.
227	0.95	18	0.57	< 0.47
228	2.8	17	2.6	< 3.2
229	1.2	16	0.92	1.9
230	15.	16	12.	18.
231	2.1	16	1.9	8.2
232	8.8	16	14.	19.
233	0.57	23	1.1	0.60
234	2.9	17	1.1	4.0
235	0.50	16	0.85	< 1.1
236	8.7	15	8.5	29.
237	0.56	15	0.73	< 2.2
238	3.6	14	1.9	7.4
239	< 1.5
240	0.45	20	2.3	< 1.5
241	11.	14	6.3	27.
242	4.6	16	4.9	5.8
243	< 0.36
244	1.9	15	1.2	2.5
245	0.42	19	1.5	< 1.1
246	< 0.81
247	2.2	18	4.3	4.8
248	2.0	14	0.78	< 1.8

Table 2—Continued

Name (HELGA)	M_{cloud} [$10^5 M_{\odot}$]	T [K]	L_{FIR} [$10^5 L_{\odot}$]	L_{CO} [$10^4 \text{ K km s}^{-1} \text{ pc}^2$]
249	3.9	17	8.5	5.5
250	1.2	16	1.3	< 1.5
251	0.73	20	0.85	< 0.79
252	2.3	15	0.65	...
253	1.9	18	1.2	...
254	0.25	28	14.	< 0.88
255	6.4	16	1.7	...
256	2.0	19	3.4	1.9
257	0.14	26	5.9	< 0.50
258	0.086	33	14.	< 0.91
259	2.9	20	3.2	2.3
260	4.7	18	2.0	< 2.1
261	1.0	17	1.1	2.0
262	0.91	17	2.3	2.9
263	0.35	24	1.2	< 0.65
264	0.41	22	0.94	< 0.50
265	0.98	18	1.6	< 1.5
266	5.3	19	2.7	< 3.1
267	3.9	15	3.5	9.0
268	1.0	24	3.8	< 0.63
269	63.	17	35.	...
270	26.	21	25.	...
271	6.8	16	1.8	...
272	9.3	17	3.1	...
273	20.	23	29.	...
274	0.62	23	0.84	...
275	0.69	23	1.2	...
276	13.	17	3.4	...
277	12.	17	5.3	...
278	2.6	17	1.1	< 1.1
279	1.1	16	0.55	< 1.4

Table 2—Continued

Name (HELGA)	M_{cloud} [$10^5 M_{\odot}$]	T [K]	L_{FIR} [$10^5 L_{\odot}$]	L_{CO} [$10^4 \text{ K km s}^{-1} \text{ pc}^2$]
280	0.71	16	1.7	2.5
281	0.50	19	3.3	< 0.98
282	0.65	24	14.	< 1.1
283	4.0	18	2.1	...
284	1.6	21	1.9	...
285	5.8	20	3.9	...
286	3.5	18	2.4	...
287	8.9	16	2.4	...
288	0.56	18	2.0	< 1.1
289	37.	19	23.	...
290	2.6	19	1.5	...
291	1.4	29	7.7	...
292	0.29	25	0.66	...
293	3.8	18	1.4	...
294	0.62	26	1.7	...
295	8.5	18	4.4	...
296	10.	18	3.7	...
297	3.2	23	5.0	...
298	5.7	16	1.2	...
299	2.6	21	2.6	...
300	4.3	16	8.9	6.1
301	11.	21	12.	5.8
302	5.1	17	2.3	< 2.6
303	1.4	19	0.87	< 0.82
304	42.	18	16.	...
305	8.4	20	8.4	< 8.5
306	6.7	19	4.9	...
307	1.2	23	2.2	< 1.6
308	2.7	22	4.3	2.5
309	5.9	17	1.6	3.1
310	3.2	22	4.7	4.2

The fitted masses and temperatures are listed in columns 2 and 3 respectively of Table 2. The clouds have a wide range of masses from 2.5×10^4 to $1.4 \times 10^7 M_\odot$ with a median mass of $4.1 \times 10^5 M_\odot$. In Paper I the total of molecular gas in M31 was estimated to be $2.6 \times 10^8 M_\odot$. The total mass of all leaf node sources for which there is a valid SED fit is $1.6 \times 10^8 M_\odot$. The equivalent total mass for all leaf nodes in the 10 kpc branch of the dendrogram is $6.5 \times 10^7 M_\odot$. Extracted clouds in the 10 kpc ring thus account for 25 percent of the molecular gas in M31.

4.2.2. Mass Completeness

Figure 7 shows the normal $N(M_{\text{cloud}})$ and cumulative $N(> M_{\text{cloud}})$ mass distributions for the clouds in M31. Assessing the completeness of the mass distribution of the extracted sources is complicated by the radial gradients in the properties of the dust and the non-uniform distribution of sources relative to those gradients. This is best illustrated by our point source mass sensitivity which is shown by the dotted curve plotted over the mass distribution. It was calculated by 100,000 repetitions of the mass calculation from our limiting flux sensitivity of $S_{250\mu\text{m}} = 54 \text{ mJy}$ (a 5σ point source at $250\mu\text{m}$, c.f. the CSAR extraction criteria) where the gas-to-dust ratio and the dust temperature have been sampled from normal distributions with the same mean and standard deviation as the sources in our catalog ($r_{gd} = 74 \pm 36$; $T = 18 \pm 2 \text{ K}$). The resulting point source sensitivity is $6.6 \pm 4.5 \times 10^5 M_\odot$. This corresponds to the lower tail of the mass distribution, but it does not account for the deviation of the distribution from a powerlaw between $10^5 - 10^6 M_\odot$.

To simplify the assessment of our completeness we only consider point sources (the highest bin in the size histogram). Additionally, we consider two extremes of background – a “high” $45 \times 12'$ background running along the SE portion of the 10 kpc ring and a “low” background of the same size immediately to the SE of it. We replicated the source extraction process on these backgrounds after injecting $250\mu\text{m}$ point sources into the field with masses drawn from the fitted powerlaw distribution (see below) and with the same dust properties as those used in the previous test. A total of 10,000 sources were injected onto each background in batches of 25. It was found that that the mass distributions of synthetic point sources were 50% complete above a mass of $1.6 \times 10^5 M_\odot$ for the low and $4.5 \times 10^5 M_\odot$ for the high backgrounds respectively. These limits are plotted on the mass distribution in Figure 7. Therefore, the departure of the mass distribution away from the power-law rise below $10^5 M_\odot$ is due to incompleteness.

4.2.3. Powerlaw Mass Distributions

The higher-mass portion of the binned mass distribution (Figure 7 left hand panel) can be fit by a powerlaw of the form $N(M) \propto M^{-\alpha_M}$. For the Andromeda clouds, least-squares fitting to the powerlaw above $4.5 \times 10^5 M_\odot$ gives a best fit exponent of $\alpha_M = 1.21 \pm 0.23$ (shown by the dot-dashed line). However, these powerlaws can be easily biased by small number statistics in the

Table 2—Continued

Name (HELGA)	M_{cloud} [$10^5 M_{\odot}$]	T [K]	L_{FIR} [$10^5 L_{\odot}$]	L_{CO} [$10^4 \text{ K km s}^{-1} \text{ pc}^2$]
311	2.5	15	2.7	< 2.3
312	1.4	17	0.57	< 1.2
313	12.	19	5.0	...
314	5.2	19	2.0	1.0
315	0.35	25	0.67	...
316	12.	23	12.	8.9
317	30.	15	3.5	7.8
318	11.	19	3.5	< 2.1
319	140.	14	8.8	...
320
321	12.	20	4.3	...
322	27.	17	4.1	...
323	4.7	25	6.1	< 1.8
324	0.70	26	1.1	...
325	4.3	20	2.2	...
326

higher mass bins (e.g. Maschberger & Kroupa 2009). A more reliable way to display the data is as a cumulative mass distribution. The cumulative mass function for GMCs in a selection of nearby galaxies consists of a linear tail below $\sim 10^5 M_\odot$ that steepens at higher masses (Blitz et al. 2007; Fukui & Kawamura 2010). The cumulative mass distribution of M31’s clouds is shown by the right-hand plot in Figure 7. It is also flat below $10^5 M_\odot$ and then begins to turn over between 10^5 – $10^6 M_\odot$.

For an infinite mass distribution of the form $N(M) \propto M^{-\alpha_M}$, the cumulative distribution is given by $N(> M) \propto M^{-(\alpha_M-1)}$. Following Gratier et al. (2012) we use the modified maximum likelihood (MML) estimator given by Maschberger & Kroupa (2009) to estimate the exponent of the underlying mass distribution shown in Figure 7. The MML estimator for α_M has a value of 2.34 ± 0.12 for the Andromeda clouds. The error on the estimate is found using the same bootstrap method as Gratier et al. (2012). The lower truncation limit was again taken as $4 \times 10^5 M_\odot$. The estimate for the upper truncation limit is $1.4 \times 10^7 M_\odot$.

The mass distributions calculated from $\alpha = 2.34$ are shown by the solid red curves in Figure 7. For clouds just in the 10 kpc ring branch the estimate is $\alpha_M = 2.62 \pm 0.21$, which is consistent with the estimate for the set of all clouds. Low number statistics meant that it was not possible to reliably estimate a value of α_M for just clouds interior or exterior to the ring. The least-squares and MML estimates appear to follow opposite sides of the error bars of the binned data.

Molecular clouds in the Milky Way have a exponent of $\alpha_M \sim 1.5$ (e.g. Sanders et al. 1985; Solomon et al. 1987; Roman-Duval et al. 2010), this is shown by the dashed black line in Figure 7 for comparison. The Milky Way exponent is within three sigma of the Andromeda exponent and passes through most of the error bars above $10^6 M_\odot$. Our estimate of α_M is consistent with a value of $(\alpha_M - 1) = 1.55 \pm 0.2$ found from high-resolution CO mapping of a subset of M31 GMCs mapped with the BIMA interferometer (R07, Blitz et al. 2007). It is also consistent with the value of 2.2 ± 0.3 found for GMCs in M33 using the same technique (Gratier et al. 2012)

4.3. Temperature and Luminosity

4.3.1. FIR Luminosity Function

A histogram of temperatures obtained from the SED fitting is shown in the left panel of Figure 8. The majority of cloud dust temperatures are in the range 15-25 K with a median value of 18 K. This is not unexpected as we are fitting a single temperature component over the wavelength range $100 - 350 \mu\text{m}$ and are therefore going to be dominated by the cold dust component. We calculate the luminosity, L_{FIR} , of this component by integrating beneath the fitted SED greybody in the range 10 - $1000 \mu\text{m}$. The individual values of L_{FIR} are listed in column 4 of Table 2.

The cumulative luminosity function is shown in the right-hand panel of Figure 8. Following the MML procedure used on the mass distribution (see above), the MML estimate for the powerlaw

exponent of the luminosity function ($N(L) \propto L^{-\alpha_M}$) was found to be $\alpha_L = 2.13 \pm 0.15$. This is similar to the far-IR luminosity function for clouds in the Milky Way found by Harris & Clegg (1983) and to the CO luminosity function of clouds in M33 (Gratier et al. 2012; Rosolowsky et al. 2007). It is also very similar to the exponent found for the mass distribution above.

4.3.2. Star Formation Rate indicators

Various continuum and multi-wavelength products have been used to calculate SFRs (see Kennicutt 1998a; Kennicutt & Evans 2012, for reviews) with many of these tracing their reasoning back to the Kennicutt-Schmidt Law (Schmidt 1959; Kennicutt 1998b). This Law assumes that the rate of star formation is proportional to some power of the interstellar gas surface density. Thus a measurement that determines the gas density or mass can be used as a proxy for the SFR. Two of these measures are the infrared luminosity and the mid-infrared flux density. Figure 9 shows a plot of L_{FIR} with *Spitzer* 24 μm flux density for the M31 clouds. The *Spitzer* values were measured in the same manner as for the *Herschel* fluxes and used the same source masks. About 11% of the sources for which we have L_{FIR} estimates are undetected at 24 μm and this ratio appears constant with Galactocentric distance.

Figure 9 shows that the 24 μm flux density, which is a tracer of warm dust and thus a tracer for the amount of on-going star formation, correlates on a cloud/complex scale with the luminosity of cool dust, which traces the reservoir of gas available at the start of star formation process. Following Vutisalchavakul & Evans (2013), the SFR calculated from the far-infrared continuum is $\text{SFR}_{\text{FIR}} \propto L_{\text{FIR}}$ (Kennicutt 1998a) while the star formation rate calculated from $S_{24\mu\text{m}}$ is $\text{SFR}_{24\mu\text{m}} \propto S_{24\mu\text{m}}^{0.88}$ (Calzetti et al. 2007). Eliminating the SFR between these gives $S_{24\mu\text{m}} \propto L_{\text{FIR}}^{1.13}$. This powerlaw is shown as the dashed line on Figure 9.

A best fit to the data gives,

$$\log(S_{24\mu\text{m}}) = (1.057 \pm 0.003) \log(L_{\text{FIR}}) - \log(2.4 \pm 0.1 \times 10^{-8}) \quad (2)$$

where $S_{24\mu\text{m}}$ is in Jy and L_{FIR} is in L_{\odot} . The best fit is shown by the solid line. The exponents of the relationship and best-fit are approximately equal. The correlation coefficient for this distribution is 0.90. Vutisalchavakul & Evans (2013) showed that the relationship also holds observationally for low-mass star formation regions within 1 kpc of the Sun and for higher-mass star formation regions scattered through the Milky Way. The theoretical relationship appears to be consistent with the Andromeda data. This further reinforces the idea that the properties of the clouds in M31 are consistent with the expected properties of clouds in the Milky Way. The full SFR for these clouds and a detailed comparison with the results of Paper III will be discussed in a follow-up paper.

4.4. CO Luminosity

The usual molecule for tracing giant molecular gas clouds is carbon monoxide, but there have been few comprehensive surveys across the entire disc of M31. Nieten et al. (2006) produced the first complete, sub-arcminute resolution CO study of M31, but there has not, as yet, been a published catalog of individual CO clouds. We therefore use our catalog to measure CO luminosities from the Nieten et al. CO Map.

Nieten et al. (2006) mapped M31 in the J=1-0 line of ^{12}CO with a resolution of 23 arcsec using the IRAM 30-m telescope. This resolution is nearly equal to that of *Herschel* at $350\mu\text{m}$, our working resolution, making comparison of our data with the Nieten CO relatively straight forward. Figure 10 shows a comparison of the ^{12}CO emission (top panel) and the $250\mu\text{m}$ emission (middle panel) towards Andromeda. The box outline shows the limit of the CO data. A single $10\text{-}\sigma$ ^{12}CO contour is shown on both images where $\sigma = 0.35 \text{ K km s}^{-1}$ (Nieten et al. 2006). The CO intensity traces well the peaks of the dust continuum. However, the extended dust component is not detected in the CO, showing that the CO emission is confined only to the densest regions.

That dust emission traces CO luminosity well has been shown for a sample of galaxies including M31 (Eales et al. 2012), we can now test whether this holds for clouds inside M31 using the CSAR extraction contours to measure an integrated CO luminosity L_{CO} for each *Herschel* cloud using the Nieten CO map. CO luminosities in the range 10^4 to $10^6 \text{ K km s}^{-1} \text{ pc}^{-2}$ were measured. The bottom panel of 10 shows the location of the *Herschel* sources that were detected at greater than 3σ in the CO data (solid dots) and those that were not detected (crosses).

Figure 11 shows L_{CO} versus M_{cloud} . The black dots show clouds that have a CO detection while the crosses show 3σ CO upper-limits for undetected clouds. There is a clear trend between the mass and CO luminosity. We test the correlation by performing a linear regression to the CO detections. This gives a best fit of,

$$\log(M_{\text{cloud}}) = (0.82 \pm 0.04) \log(L_{\text{CO}}) + (1.7 \pm 0.2) \quad (3)$$

where M_{cloud} is in M_{\odot} and L_{CO} is in $\text{K km s}^{-1} \text{ pc}^2$. This is shown by the solid line. The correlation coefficient for this fit is 0.84 showing a reasonable correlation between the mass of a cloud derived from the *Herschel* data (M_{cloud}) and that cloud’s CO luminosity. The CO upper-limits appear to broadly follow the same trend, at least as far as low L_{CO} correlates with low M_{cloud} .

The dashed-line on Figure 11 shows the Paper II relation of $\alpha_{\text{CO}} = M_{\text{cloud}}(\text{H}_2)/L_{\text{CO}} = 4.1 M_{\odot} \text{ pc}^{-2} \text{ K}^{-1} \text{ km}^{-1} \text{ s}$ under the assumption that M_{cloud} is 70% H_2 by mass (proto-solar abundance, e.g., Asplund et al. 2009).

Solomon et al. (1987) presented a CO survey of clouds in the Milky Way observed with the 14-m FCRAO antenna. The implied sizes for their clouds are lower than we have measured for M31, but the range of CO luminosities are almost identical to those we calculate. This supports the proposition that we are not resolving individual clouds and are instead resolving assemblages

of individual clouds. The upper range for both surveys is $L_{\text{CO}} = \sim 10^6 \text{ K km s}^{-1} \text{ pc}^{-2}$. They find a best fit between the virial mass M_{virial} of each cloud and L_{CO} of

$$\log(M_{\text{virial}}) = 0.81 \log(L_{\text{CO}}) + 1.6 \quad (4)$$

This is virtually identical to the power-law that we fit to the clouds in Andromeda.

Solomon et al. related the optically thick ^{12}CO luminosity, which is proportional to the cloud’s cross section, to the virial mass using a size-linewidth relation to give $M_{\text{virial}} = 43 L_{\text{CO}}^{4/5} M_{\odot}$. This relationship would hold for virialised clouds. That we obtain the same mass-luminosity relationship in M31 suggests that these clouds are virialised on some level. This would probably not be on the complex scale, but could be at some spatial scale below our resolution limit (i.e., the complexes are made up unresolved virialised units).

4.5. Comparison With Interferometry studies

Studies of individual giant molecular clouds in M31 with interferometers have been made (Vogel et al. 1987; Wilson & Rudolph 1993; Allen et al. 1995; Loinard & Allen 1998), the increasing sensitivity of millimeter interferometers has meant that studies of more than a few clouds at a time is now possible (R07, S08). R07 mapped a $\sim 7 \text{ kpc}$ arc along a northwestern section of the 10 kpc ring (among other fields). They detected 19 clouds which they could accurately resolve the properties of and a further 48 unresolved clouds. S08 mapped a single 2-arcmin diameter field across a northeastern section of 10 kpc ring, detecting 6 clouds.

Figure 12 shows a comparison of the results from these two studies using the BIMA interferometer and the *Herschel* data presented in this paper. The greyscale and contours are SPIRE $250\mu\text{m}$ dust emission with contour spacings of 5σ . The middle panel shows the region coincident with the R07 Field A while the left-hand panel shows the S08 field. The BIMA clouds are shown by the markers (only the resolved sources are shown for R07 field). R07 and S08 have resolutions that are ~ 3 times the resolution of the $350\mu\text{m}$ *Herschel* maps. Comparison with the R07 field shows that the leaf nodes identified in this paper can break into multiple objects when viewed with an interferometer. Typically there is one BIMA source identified with the *Herschel* peak and several more sources clustered around it. The S08 field shows a similar pattern. They did not break down their clouds into sub-fragments as R07 did, but the detailed structure is still visible in their original maps.

The comparison of the BIMA data to the *Herschel* regions shows that it is correct to think of the *Herschel* regions as complexes of giant molecular clouds and not individual clouds. This comparison also illustrates the difficulty of comprehensively mapping a source as large as M31 with sufficient resolution to resolve individual star formation regions. The speed and sensitivity of ALMA would go a long way to solving this, but its relatively high declination and large size makes observing M31 challenging – if not virtually impossible – from ALMA’s location. It would,

however, make an excellent target for the proposed NOEMA array at IRAM.

5. Global Structure

5.1. Major Axis Features

Figure 13 shows a series of intensity slices taken at different wavelengths along the major-axis of M31. The data is normalized against the peak flux in each band and is convolved to a resolution of $24''$ FWHM (the same as was used for the flux density measurements). The $500\mu\text{m}$ data has been left unconvolved as its PSF is larger than the $350\mu\text{m}$ PSF. The annotations show the positions of the arm crossing regions described by Baade (1963) from his survey of M31 using the Mount Wilson 100-inch telescope. These are labeled numerically proceeding from the center outwards in northerly and southerly directions. The innermost N1 and S1 arms, and to an extent the N2 and S2 crossing points, show an excess of emission at shorter wavelengths. This is the region that appears blue in the false-color image in Figure 1 indicating the presence of hot dust. The N3 crossing point shows a strong peak of emission at long wavelengths relative to the other inner arms.

Paper I reported the existence of a series of low brightness rings and structures surrounding M31 in the *Herschel* maps. Paper I also confirmed the detection of a 15 kpc ring previously seen with *Infrared Space Observatory* (Haas et al. 1998) and *Spitzer* (Gordon et al. 2006). The 15 kpc ring (equivalent to $\sim 1^\circ$ at 785 kpc) is seen in Figure 13 as the peaks coincident with Baade’s N5 and S5 arm crossing points. In addition to the 15 kpc ring, Paper I reported three additional structures they labeled E, F and G at major-axis distances of ~ 21 , ~ 26 , and ~ 31 kpc (equivalent to $\sim 1.5^\circ$, $\sim 1.9^\circ$, and $\sim 2.25^\circ$ at 785 kpc). The E feature is visible as the faint red band on the right of Figure 1 and a minor rise in emission associated with the S6 arm crossing in Figure 13. The S7 crossing point is not shown, but at 1.9° from the center, it would be coincident with the F feature in the *Herschel* maps.

Analysis of M31’s spiral structure is hampered by the heavy disruption to the galaxy in the southern quadrant. The most significant feature is a 30° wide break in the ring at a position of (8, -8) kpc coincident with the position of star forming cloud NGC 206 (visible in Figure 14). There is further evidence of this disruption in the arm crossing slice shown in Figure 13. The northern arm segments are all coincident with the strongest emission peaks. However, the southern crossing points only show a weak coincidence, if any, with the strongest emission peaks. There is some emission peaking with S2 and S3, but the brightest peaks actually occur between the S3 and S4 as part of an extended plateau of emission which stretches from S2 to S5. The outer most of these two peaks, at $\sim 40'$, is coincident with the sweep of the Ring and the possible spiral arm pattern.

5.2. Structural Parameters

In order to more accurately describe the properties of the Andromeda spiral arms we follow Gordon et al. (2006) and analyze the 10 kpc Ring separate from the arms themselves. Gordon et al. (2006) described the structure of M31 with a classic two-arm logarithmic spiral and an offset ring. In addition to this radial profile analysis we attempt a fit to the 15 kpc ring. A summary of the results is given in Table 3.

5.2.1. The 10 kpc Ring

Figure 14 (left) shows a $250\mu\text{m}$ greyscale map of the center of M31. The branch-network that comprises the 10 kpc Ring (as identified by the box/contour in Figure 3) is shown by the gray-contour. The position of these GMCs is shown by the circular markers. An offset circle is fit to them in two-stages: we exclude GMCs in the position angle (PA) range $120\text{--}240^\circ$ (shown by the dotted wedge in Figure 14). This gives an initial fit to the undistributed portion of the Ring.

We then repeat the fit for all Ring GMCs over all PAs with a galactocentric radius within 1.5 kpc of the first fit’s result. These GMCs are shown by a cross inside their marker. It is the fit to these filtered GMCs that gives us the parameters for the Ring. The best-fit Ring is shown by the black circle on Figure 14 and its parameters are listed in columns 2 to 4 of Table 3. The fitted center is shown by the cross and is offset from the assumed center of M31 by 1.5 kpc along the negative x-axis.

The exact extent of the deprojected ring is sensitive to M31’s assumed angle of inclination. This angle can be estimated by fitting position-velocity tilted ring models to molecular line data (Chemin et al. 2009; Corbelli et al. 2010) of M31. We have used the HELGA assumed inclination angle of 77° to fit our best fit radius of 10.3 kpc. This angle is based on a mean value from the (Chemin et al. 2009) model. However, in their original analysis Gordon et al. (2006) derived a radius of 9.8 kpc using an inclination angle of 75° . This is closer to the mean value found in the Corbelli et al. (2010) model.

We repeated our fitting using the Gordon et al. (2006) angle of inclination and found a radius of 9.5 kpc in excellent agreement with their value. The 9.5 kpc fit is shown by the dashed circle on

Table 3: Structural parameters for M31 by assumed angle of inclination i .

i ($^\circ$)	10 kpc Ring			15 kpc Ring			Spiral Arms	
	R_{10} kpc (kpc)	Center RA	Center Dec.	R_{15} kpc (kpc)	Center RA	Center Dec.	ϕ ($^\circ$)	a (kpc)
77	10.3	00 ^h 51 ^m 20 ^s .6	+42 $^\circ$ 35′ 01″	15.5	00 ^h 50 ^m 58 ^s .6	+42 $^\circ$ 29′ 39″	8.9	6.6
75	9.5	00 ^h 51 ^m 22 ^s .0	+42 $^\circ$ 35′ 14″	15.5	00 ^h 50 ^m 59 ^s .0	+42 $^\circ$ 30′ 35″	9.1	6.4

Figure 14 (it appears as an ellipse due to the differences in the assumed inclination angles). The differing results for the two inclination angles are listed in Table 3 and the differences between the two inclination models is discussed in Appendix A.

Figure 14 (right) shows a radial profile of the 10 kpc Ring constructed in the coordinate frame of the 10 kpc Ring fit. Normalized flux profiles for each of the 5 *Herschel* wavelengths are shown as solid lines, the colors are the same as for Figure 13. The profiles were repeated with the exclusion of data in the PA range 120–240°. The second set of profiles are shown by dashed lines and have been normalized to 0.8 as to offset them from the first set of profiles. All wavelengths shorter than 350 μm have been convolved to the 350 μm resolution and pixel grid.

There is a strong coincidence in the flux profiles on the interior side of the Ring, all reaching a minimum at 7.5 kpc and a maximum at 10 kpc. The correlation is particularly strong between 160–500 μm suggesting that the cold dust component has a uniform temperature between these radii. The reverse is true on the outside of the ring, beyond 12 kpc, where the long wavelength bands become increasingly strong. Comparison of this trend to the radial dust fits of Paper II shows that there was only a slight temperature gradient in the outer galaxy. However, there was a stronger radial trend in the dust spectral index (β). A flattening of the Rayleigh-Jeans part of the dust SED, as shown by the changing β profile Paper II, could explain the divergence of the flux profiles seen in Figure 14.

5.2.2. The 15 kpc Ring

The existence of a 15 kpc ring visible in infra-red maps of M31 has been noted before (Haas et al. 1998; Gordon et al. 2006). Features associated with this 15 kpc ring are visible in the *Herschel* maps (e.g., Figure 2) and are seen as an enhancement in the number density of molecular clouds at that radii (see Figure 6). It is reasonable then to investigate whether this ring can be fit in the same manner as the 10 kpc Ring. We do not have a unique tree branch for this structure as there is not a constant valley between it and the 10 kpc Ring.

To get around this we select all the GMCs with a galactocentric distance larger than 14 kpc (to exclude the 10 kpc ring and NGC 206) and less than 18 kpc (to exclude the outer arcs) and fit them with an offset circle. The results of the 15 kpc fit are listed for both angles of inclination in Table 3. The clouds associated with best fit are colored orange in Figures 15 and 16. Both fits give equivalent radii, but have slightly different centers. This exercise is only an aid to estimating the radius of this feature. Nevertheless, the 15.5 kpc Ring does appear to closely match the distribution of GMCs. It also passes through the Baade (1963) N5 and S5 arm crossing regions. The reduced- χ^2 value for this fit is ~ 0.8 indicating that the fit is not unreasonable even if it is slightly over-constrained (as would be expected from the filtering).

Gordon et al. (2006) investigated the offset of the 10 kpc ring by modeling M31’s interaction with the satellite galaxy M32. They showed that the passage of M32 could have triggered a wave

of star formation which forms the ring itself. However, M32’s proximity also causes the ring to be slightly pulled off-center, thus creating the observed offset. The xy offset we find for the 10 kpc and 15 kpc rings are (-1.5, -0.3) kpc and (-0.3, -0.3) kpc respectively. While different, both offsets do pull towards the negative- x , negative- y direction suggesting that they are concentric with each other.

5.2.3. The Spiral Arms

The “spiral arms” shown in Figure 2 are not contiguous and appear to be comprised of a series of disjointed arm segments. In order to better describe these arms we use the positions of the GMCs from our source extraction. These are filtered to remove GMCs that are within 1.5 kpc of either of the fitted 10 or 15 kpc Rings. We then use a preliminary by-eye fit to divide the remaining GMCs into those associated with one or other of two spiral arms. The sources associated with each arm are shown plotted using polar coordinates in Figure 15 and using XY-offset coordinates in Figure 16. Figure 15 is split into two regions. The first region is wrapped over the range $0 - 2\pi$ radians (bracketed by the dotted lines) and is where all the GMCs are plotted with their position angles. Within this range the GMCs used to fit each of the 10 and 15 kpc Rings are shown by the solid markers and the fits to the rings are shown by the dot-dashed lines.

For ease of reference we assign designations to each arm. We refer to the first arm as “Arm A” and plot its clouds as open circles. This arm that passes through the southern Baade (1963) arm crossing points (S2 and S3) interior to the 10 kpc and then cross the ring close to N4. We refer to the second arm as “Arm B” and plot the clouds associated with it as circles with crosses. Arm B passes through the Baade (1963) arm crossing points (N3 and S4) on either side of the ring. The two sets of GMCs appear to follow the same trend and suggest that they are merely a rotation of one another.

The clouds in Figure 15 are plotted with (full θ range) and without (θ wrapped to $0 - \pi$ radians) their phase shift removed. Classic logarithmic spiral arms show up as linear features on a plot of $\ln(r)$ versus θ . The equation for these can be written in the form $r = a \exp(b\theta)$ where r and θ are the position of the spiral in polar coordinates, a is a reference radius determining the relative rotation of the spiral, and b is a constant related to the pitch angle ϕ by $b = 1/\tan(90 - \phi)$. A linear regression was performed on the unwrapped Arm GMCs under the assumption that they had a common pitch angle and were offset from each other by 180° . The results are listed in Table 3. Repeating the fit without excluding the 15 kpc Ring GMCs or fitting the arms individually all gave values that were within the errors on the original pitch angle fit (± 0.14 for $i = 77^\circ$). The $i = 75^\circ$ fit is within 3σ of the pitch angle ($i = 9.5^\circ$) found by Gordon et al. (2006).

Also plotted on Figure 15 are the positions of the Baade (1963) arm crossing regions and the features E, F, and G from Paper I. Features E and F are associated with regions S6 and S7, but neither N6, N7, S6 or S7 appear to be closely associated with any particular arm. It is possible

that evolution in the Arm’s pitch angle or changes in inclination angle are influencing features this far out. We explore the effects of a non-uniform inclination angle on M31’s spiral structure in Appendix A

There is a disrupted portion of the Ring at $X = 8, Y = -8$ kpc that appears to be a inter-arm hole cleared out between the two spiral arms. Gordon et al. (2006) simulated the interaction of M32 with M31’s disc and showed that such a hole could be created by M32’s passage through the disc. The survival of this hole against differential rotation implies a relatively short timescale, on the order of 20 Myr (Gordon et al. 2006). A general effect of M32’s passage could have been a wave of star formation within M31’s disc (Gordon et al. 2006). M32’s HII luminosity function is double peaked with the fainter peak being consistent with emission from a population of the B stars with a lifetime of 15 Myr (Azimlu et al. 2011), comparable to the timescale for the passage of M32 through M31 disc.

6. Summary

We have used HELGA (Paper I) data taken with the *Herschel Space Observatory* (wavelengths 100-500 μ m) to create a catalog of molecular clouds in the nearby galaxy of Andromeda.

- Monochromatic source extraction was performed on the M31 field using the hierarchical source extraction algorithm CSAR (Kirk et al. 2013). The tree of sources was pruned back to that containing the contiguous emission from M31 alone. A total of 651 nodes were found in the structure tree. Of these, 326 were leaf-nodes, i.e., sources without resolved substructure. These are the sources that form the catalog presented in this paper.
- The surface number density of clouds peaks towards the center of M31 and falls off at a rate similar to that of the optical surface brightness out to 15 kpc. On top of this distribution are a series of peaks at $\sim 5, 10$, and 15 kpc coincident with the reported rings of emission at several of those wavelengths. In addition, Paper I found a series of arc-like features at $\sim 20, 25$, and 30 kpc suggesting that M31 contains a set of nested weak resonant rings whose radii are multiples of 5 kpc.
- *Herschel* photometry was performed for each of the clouds. The temperature and mass of each cloud was found by fitting a greybody to its SED. The dust parameters were described by the radial dust relationships (dust-to-mass ratio, dust emissivity) from Paper II. The median dust temperature was 18 K.
- Clouds with masses in the range $10^4 - 10^7 M_{\odot}$ and with sizes of 100-1000 pc were found. This and a comparison with interferometry maps showed that we are resolving structures that are comparable to large GMCs and complexes of multiple GMCs within the Milky Way. The powerlaw slope of the cloud’s cumulative mass function agreed with that found in other extragalactic studies of molecular clouds and in interferometric studies of M31.

- The clouds’ properties appear to be consistent with those of clouds found in the Milky Way. Specifically, the far-infrared luminosity function, the relationship of far to mid-infrared luminosity, and the relationship of cloud mass to ^{12}CO luminosity are all consistent with that found for clouds in the Milky Way. The last relationship was found to be virtually identical to that found by Solomon et al. (1987) for clouds in the Milky Way.
- Following Gordon et al. (2006), we fit an offset circle to the dominant ring feature and calculate a radius of 10.3 kpc. Our results were consistent with Gordon et al. (2006), allowing for differences in assumed inclination angle. We also fit an offset circle to the clouds at 15 kpc and derive radius of 15.5 kpc. The centers of both Rings are offset in the same approximate direction from the assumed center of M31.
- Clouds associated with the 10 and 15 kpc Rings were excluded and a logarithmic spiral was fit to the remaining sources. A common pitch angle of 8.9° was found for two spiral arms that trailed one another by 180° . The fitted arms and rings are consistent with the arm crossing features described by Baade (1963).

SPIRE has been developed by a consortium of institutes led by Cardiff University (UK) and including Univ. Lethbridge (Canada); NAOC (China); CEA, LAM (France); IFSI, Univ. Padua (Italy); IAC (Spain); Stockholm Observatory (Sweden); Imperial College London, RAL, UCL-MSSL, UKATC, Univ. Sussex (UK); and Caltech, JPL, NHSC, Univ. Colorado (USA). This development has been supported by national funding agencies: CSA (Canada); NAOC (China); CEA, CNES, CNRS (France); ASI (Italy); MCINN (Spain); Stockholm Observatory (Sweden); STFC (UK); and NASA (USA).

PACS has been developed by a consortium of institutes led by MPE (Germany) and including UVIE (Austria); KU Leuven, CSL, IMEC (Belgium); CEA, LAM (France); MPIA (Germany); INAF/IFSI/OAA/OAP/OAT, LENS, SISSA (Italy); IAC (Spain). This development has been supported by the funding agencies BMVIT (Austria), ESA-PRODEX (Belgium), CEA/CNES (France), DLR (Germany), ASI/INAF (Italy), and CICYT/MCYT (Spain).

REFERENCES

- Allen, R. J., Le Bourlot, J., Lequeux, J., Pineau des Forets, G., & Roueff, E. 1995, *ApJ*, 444, 157, 157
- Aniano, G., Draine, B. T., Gordon, K. D., & Sandstrom, K. 2011, *PASP*, 123, 1218, 1218
- Arp, H. 1964, *ApJ*, 139, 1045, 1045
- Asplund, M., Grevesse, N., Sauval, A. J., & Scott, P. 2009, *ARA&A*, 47, 481, 481

- Azimlu, M., Marciniak, R., & Barmby, P. 2011, *AJ*, 142, 139, 139
- Baade, W. 1963, *Evolution of stars and galaxies*, ed. Gaposchkin, C. H. P.
- Barnard, E. E. 1919, *ApJ*, 49, 1, 1
- Bendo, G. J. 2011, *SPIRE Photometry Cookbook* (revision 08-Jul-2011), Tech. rep.,
- Bernard, J.-P., Paradis, D., Marshall, D. J., et al. 2010, *A&A*, 518, L88, L88
- Blitz, L., Fukui, Y., Kawamura, A., et al. 2007, *Protostars and Planets V*, 81, 81
- Boulanger, F., Combes, F., & Stark, A. A. 1981, *A&A*, 93, L1, L1
- Burstein, D., & Heiles, C. 1982, *AJ*, 87, 1165, 1165
- Buta, R. 1999, *Ap&SS*, 269, 79, 79
- Bystedt, J. E. V., Brinks, E., de Bruyn, A. G., et al. 1984, *A&AS*, 56, 245, 245
- Calzetti, D., Kennicutt, R. C., Engelbracht, C. W., et al. 2007, *ApJ*, 666, 870, 870
- Carey, S. J., et al. 2009, *PASP*, 121, 76, 76
- Chemin, L., Carignan, C., & Foster, T. 2009, *ApJ*, 705, 1395, 1395
- Churchwell, E., et al. 2009, *PASP*, 121, 213, 213
- Corbelli, E., Lorenzoni, S., Walterbos, R., Braun, R., & Thilker, D. 2010, *A&A*, 511, A89, A89
- Courteau, S., Widrow, L. M., McDonald, M., et al. 2011, *ApJ*, 739, 20, 20
- Dame, T. M., Hartmann, D., & Thaddeus, P. 2001, *ApJ*, 547, 792, 792
- De Looze, I., et al. 2012, *MNRAS*, 423, 2359, 2359
- Devereux, N. A., Price, R., Wells, L. A., & Duric, N. 1994, *AJ*, 108, 1667, 1667
- Draine, B. T. 2003, *ARA&A*, 41, 241, 241
- Eales, S., et al. 2012, *ApJ*, 761, 168, 168
- Ford, G. P., et al. 2013, *ApJ*, 769, 55, 55
- Fritz, J., et al. 2012, *A&A*, 546, A34, A34
- Fukui, Y., & Kawamura, A. 2010, *ARA&A*, 48, 547, 547
- Goodman, A. A., Rosolowsky, E. W., Borkin, M. A., et al. 2009, *Nature*, 457, 63, 63
- Gordon, K. D., et al. 2006, *ApJ*, 638, L87, L87

- Gouliermis, D. A., Schmeja, S., Klessen, R. S., de Blok, W. J. G., & Walter, F. 2010, *ApJ*, 725, 1717, 1717
- Gratier, P., et al. 2012, *A&A*, 542, A108, A108
- Griffin, M. J., et al. 2010, *A&A*, 518, L3, L3
- Haas, M., Lemke, D., Stickel, M., et al. 1998, *A&A*, 338, L33, L33
- Habing, H. J., et al. 1984, *ApJ*, 278, L59, L59
- Harris, S., & Clegg, P. E. 1983, *MNRAS*, 203, 955, 955
- Hodge, P. W. 1980, *AJ*, 85, 376, 376
- Houllahan, P., & Scalo, J. 1992, *ApJ*, 393, 172, 172
- Hughes, A., et al. 2010, *MNRAS*, 406, 2065, 2065
- Ibata, R., Chapman, S., Ferguson, A. M. N., et al. 2005, *ApJ*, 634, 287, 287
- Jackson, J. M., Finn, S. C., Rathborne, J. M., Chambers, E. T., & Simon, R. 2008, *ApJ*, 680, 349, 349
- Jungwiert, B., & Palous, J. 1996, *A&A*, 311, 397, 397
- Kennicutt, R. C., & Evans, N. J. 2012, *ARA&A*, 50, 531, 531
- Kennicutt, Jr., R. C. 1998a, *ARA&A*, 36, 189, 189
- . 1998b, *ApJ*, 498, 541, 541
- Kirk, J. M., et al. 2013, *MNRAS*, 432, 1424, 1424
- Lada, C. J., Margulis, M., Sofue, Y., Nakai, N., & Handa, T. 1988, *ApJ*, 328, 143, 143
- Lee, E. J., Murray, N., & Rahman, M. 2012, *ApJ*, 752, 146, 146
- Loinard, L., & Allen, R. J. 1998, *ApJ*, 499, 227, 227
- Lynds, B. T. 1962, *ApJS*, 7, 1, 1
- Markwardt, C. B. 2009, in *Astronomical Society of the Pacific Conference Series*, Vol. 411, *Astronomical Society of the Pacific Conference Series*, ed. D. A. Bohlender, D. Durand, & P. Dowler, 251
- Maschberger, T., & Kroupa, P. 2009, *MNRAS*, 395, 931, 931
- McConnachie, A. W., Irwin, M. J., Ferguson, A. M. N., et al. 2005, *MNRAS*, 356, 979, 979

- Molinari, S., et al. 2010, *PASP*, 122, 314, 314
- Muller, T., et al. 2011, PACS Photometer - Point-Source Flux Calibration (revision 12-Apr-2011, Tech. Rep. PICC-ME-TN-07,
- Neininger, N., Guelin, M., Garcia-Burillo, S., Zylka, R., & Wielebinski, R. 1996, *A&A*, 310, 725, 725
- Nieten, C., Neininger, N., Guélin, M., et al. 2006, *A&A*, 453, 459, 459
- Paladini, R., Linz, H., Altieri, B., & Ali, B. 2012, Assessment analysis of the extended emission calibration for the PACS red channel, Tech. Rep. PICC-NHSC-TR-034, v1.0,
- Pilbratt, G. L., et al. 2010, *A&A*, 518, L1, L1
- Planck Collaboration, et al. 2011, *A&A*, 536, A25, A25
- Poglitsch, A., et al. 2010, *A&A*, 518, L2, L2
- Reid, M. J., et al. 2009, *ApJ*, 700, 137, 137
- Robitaille, T. P., & Whitney, B. A. 2010, *ApJ*, 710, L11, L11
- Roman-Duval, J., Jackson, J. M., Heyer, M., Rathborne, J., & Simon, R. 2010, *ApJ*, 723, 492, 492
- Rosolowsky, E. 2007, *ApJ*, 654, 240, 240
- Rosolowsky, E., Keto, E., Matsushita, S., & Willner, S. P. 2007, *ApJ*, 661, 830, 830
- Rosolowsky, E. W., Pineda, J. E., Kauffmann, J., & Goodman, A. A. 2008, *ApJ*, 679, 1338, 1338
- Sanders, D. B., Scoville, N. Z., & Solomon, P. M. 1985, *ApJ*, 289, 373, 373
- Schmidt, M. 1959, *ApJ*, 129, 243, 243
- Sheth, K., Vogel, S. N., Wilson, C. D., & Dame, T. M. 2000, in *Proceedings 232. WE-Heraeus Seminar*, ed. E. M. Berkhuijsen, R. Beck, & R. A. M. Walterbos, 37–40
- Sheth, K., Vogel, S. N., Wilson, C. D., & Dame, T. M. 2008, *ApJ*, 675, 330, 330
- Skrutskie, M. F., et al. 2006, *AJ*, 131, 1163, 1163
- Smith, M. W. L., et al. 2012, *ApJ*, 756, 40, 40
- Solomon, P. M., Rivolo, A. R., Barrett, J., & Yahil, A. 1987, *ApJ*, 319, 730, 730
- Solomon, P. M., Sanders, D. B., & Scoville, N. Z. 1979, in *IAU Symposium, Vol. 84, The Large-Scale Characteristics of the Galaxy*, ed. W. B. Burton, 35–52
- Valtchanov, I. 2011, SPIRE Observers’ Manual, Tech. Rep. *HERSCHEL-DOC-0798*, v2.4,

- Vogel, S. N., Boulanger, F., & Ball, R. 1987, *ApJ*, 321, L145, L145
- Vutisalchavakul, N., & Evans, II, N. J. 2013, *ApJ*, 765, 129, 129
- Watkins, L. L., Evans, N. W., & An, J. H. 2010, *MNRAS*, 406, 264, 264
- Wilcock, L. A., Ward-Thompson, D., Kirk, J. M., et al. 2012, *MNRAS*, 422, 1071, 1071
- Wilson, C. D., & Rudolph, A. L. 1993, *ApJ*, 406, 477, 477
- Wünsch, R., Jáchym, P., Sidorin, V., et al. 2012, *A&A*, 539, A116, A116

A. Deprojection

It has been known since the earliest studies of Andromeda’s structure (Baade 1963; Arp 1964) that its stellar disc exhibited a pronounced warp at large radii. This warp means that studies which use a constant position and inclination angle to deproject M31 are liable to introduce artifacts resulting from differences between the assumed flat geometry and the actual warped geometry. In order to quantify possible problems of this sort we study the effects of projecting M31 using two recent models published by Chemin et al. (2009, hereafter the Chemin Model) and Corbelli et al. (2010, hereafter the Corbelli Model) using independent HI surveys. Direct comparison of the models is made easier as both use the same distance to Andromeda as adopted by the HELGA consortium (McConnachie et al. 2005).

The two literature models analyzed M31 as a series of nested, tilted rings. Each ring represents the projection of a particular circular orbit with its own angle of inclination $i(R)$ and position angle $\theta(R)$. Figure 17 plots the inclination and position angles from table 4 of Chemin et al. (2009) and table 1 of Corbelli et al. (2010). The Chemin Model tabulated parameters for the entire disc from the center to 38 kpc, but the Corbelli Model only tabulated values over the range 8.5–36.5 kpc as they did not model the inner part of the HI disc. The Corbelli Model includes small offsets (x_0, y_0) of order 1-2 arcmin (less than 0.5 kpc) to the central position of each ring, but the Chemin Model does not.

Figure 17 shows that the position angles adopted by the two models broadly agree. However, the angle of inclination adopted by the Corbelli Model is systematically higher than the value adopted by the Chemin Model. The mean inclination angle over the range 10-20 kpc is $75 \pm 1^\circ$ for the Chemin Model and $77 \pm 1.0^\circ$ for the Corbelli Model (this is value assumed by the HELGA survey). Likewise, the mean position angle over the same range is $37.5 \pm 0.9^\circ$ for the Chemin Model and $37.3 \pm 0.8^\circ$ for the Corbelli Model. These inclination angles represent a deprojection factor of $\times 3.86$ for the Chemin Model and $\times 4.44$ for the Corbelli Model along the projected minor axis, a

difference of approximately 15%. The models also differ in their trends in the outer disc, where the warp should be most noticeable. Both Models include a position angle minimum at around ~ 32 kpc. The Chemin model includes a similar drop in the inclination angle, but the Corbelli Model does not and has the inclination angle increasing monotonically in the outer disc.

To examine the effects of these two models we construct a simple toy model of M31 consisting of a series of concentric circular rings and twin logarithmic spiral arms with a pitch angle of 8.5° . The top row of Figure 18 shows the effects of projecting the toy model on to the plane of the sky using the constant angles assumed by HELGA ($i = 77^\circ$, $\theta = 38^\circ$), the Corbelli Model, and the Chemin Model. For the flat (constant angles) geometry the inclination of the disc means that the rings along the projected minor-axis become very close, but never overlap. By comparison, after ~ 27 kpc, the Corbelli and Chemin Models deviate from the approximately linear trend of position angle with radius. This causes the rings to precess against one another and to overlap.

The position angle trend is amplified by the aforementioned divergence of the adopted inclination angle. The effect of this is to send the outer parts of the spiral arms in opposite directions. The Corbelli Model causes the outer rings, and the outer spiral arm segments, to be projected inwards over/below the central part of the galaxy. By contrast the Chemin Model causes those same spiral arms to flare outwards along the minor axis. There are also differences in the center of the galaxy as the Chemin Model causes the inner part of the spiral arms to merge into a ring like structure. No projection data was given for the Corbelli Model within 8.5 kpc so we used the data from that radius for the interior portion.

The effects of naively deprojecting warped structures whilst using a non-warped assumption are explored in the middle row of Figure 18. Here the projected models from the top row are deprojected using the constant position and inclination angles used for the first column. As expected, the first column deprojects perfectly, but there are significant artifacts introduced into the other two panels. The assumed i and θ most closely match the Corbelli Model so it is unsurprising that it appears the most circular. This exercise reinforces how structure assumed to be at one radius, particularly faint structure as would be found on the tail end of a spiral arm, may actually be at a completely different radius.

The bottom line of panels shows the $350\mu\text{m}$ map of M31 (the one used for source identification) resampled into a rectilinear face-on-grid under the assumptions of the flat geometry, the Corbelli, and the Chemin Models. These maps were created by calculating the Right Ascension and Declination for every pixel under the assumptions of each model. Each pixel was then assigned the brightness of the original map at that R.A. and Dec. For the constant angle example each x, y pixel mapped uniquely onto a single R.A., Dec position. However, there was a degeneracy in the tilted ring models where multiple x, y pixels mapped onto the same R.A., Dec position, as would be expected from the overlapping rings in the preceding panels. This effect created regions on the deprojected maps where features were stretched out and blurred.

Comparison of the deprojected $350\mu\text{m}$ map in Figure 18 with the other panels shows that

the majority of emission is within a radius of ~ 22 kpc and is this not directly effected by the strongest parts of the outer warp. Indeed, the warp only becomes important when the Corbelli Model projects spiral arms over the center of the galaxy. Of the two variable i , θ models it is the Chemin Model which gives a version of M31 that appears the most circular at large radii. However, it also displays significant degeneracy along the projected short axis. It does, unlike the Corbelli Model, deproject the center of the galaxy. The lozenge/bar shaped inner structure shown in the middle-right panel of Figure 18 is similar to that seen in the RGB image shown in Figure 1.

B. Satellites

There are two dwarf galaxies within the M31 field, M32 and NGC 205, which are of note for the dramatically varying dust emission. Figure 19 shows both galaxies at SPIRE $350\mu\text{m}$, PACS $100\mu\text{m}$, and *Spitzer* MIPS $24\mu\text{m}$, the contour shows the *Spitzer* IRAC $3.6\mu\text{m}$ 50% peak intensity contour. All the data has been convolved to the $350\mu\text{m}$ resolution. M32 appears strongly at $24\mu\text{m}$, but is completely devoid of emission in the *Herschel* images. By contrast, NGC 205 shows revolved emission at three positions - a central peak coincident with short wavelength center and long wavelengths peaks to the north and south of it. See De Looze et al. (2012) for a study of the NGC 205 data.

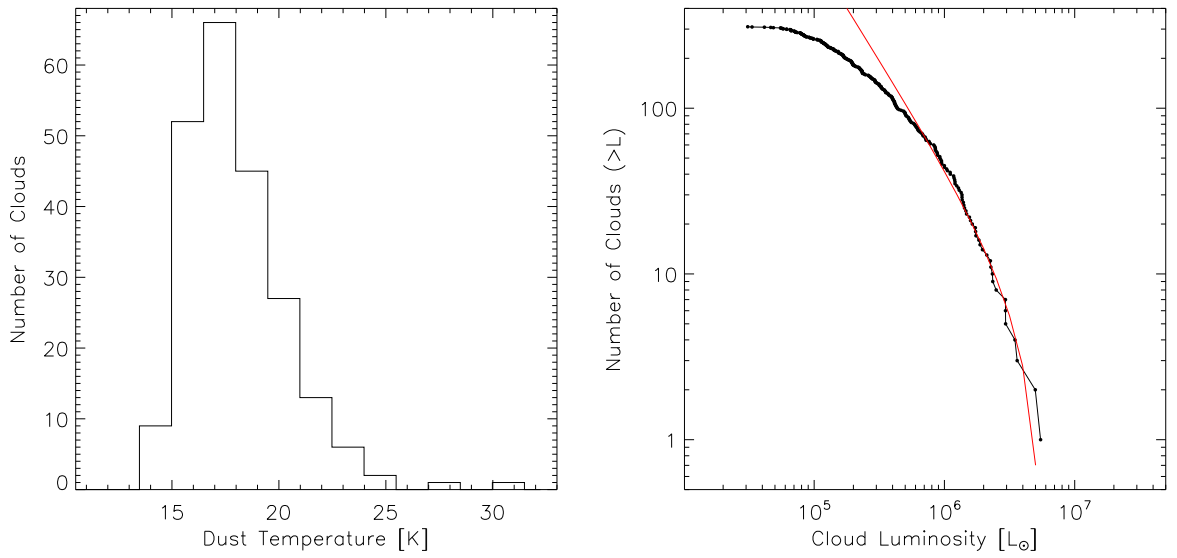


Fig. 8.— The temperature and luminosity of M31 clouds. **(left)** Histogram of dust temperature fitted between the wavelengths of 100 and $350\mu\text{m}$. **(right)** Cumulative histogram of FIR luminosity L_{FIR} integrated beneath the best fit SED greybody. The red line shows the luminosity function calculated from a powerlaw with an exponent of $\alpha_L = 2.1 \pm 0.3$.

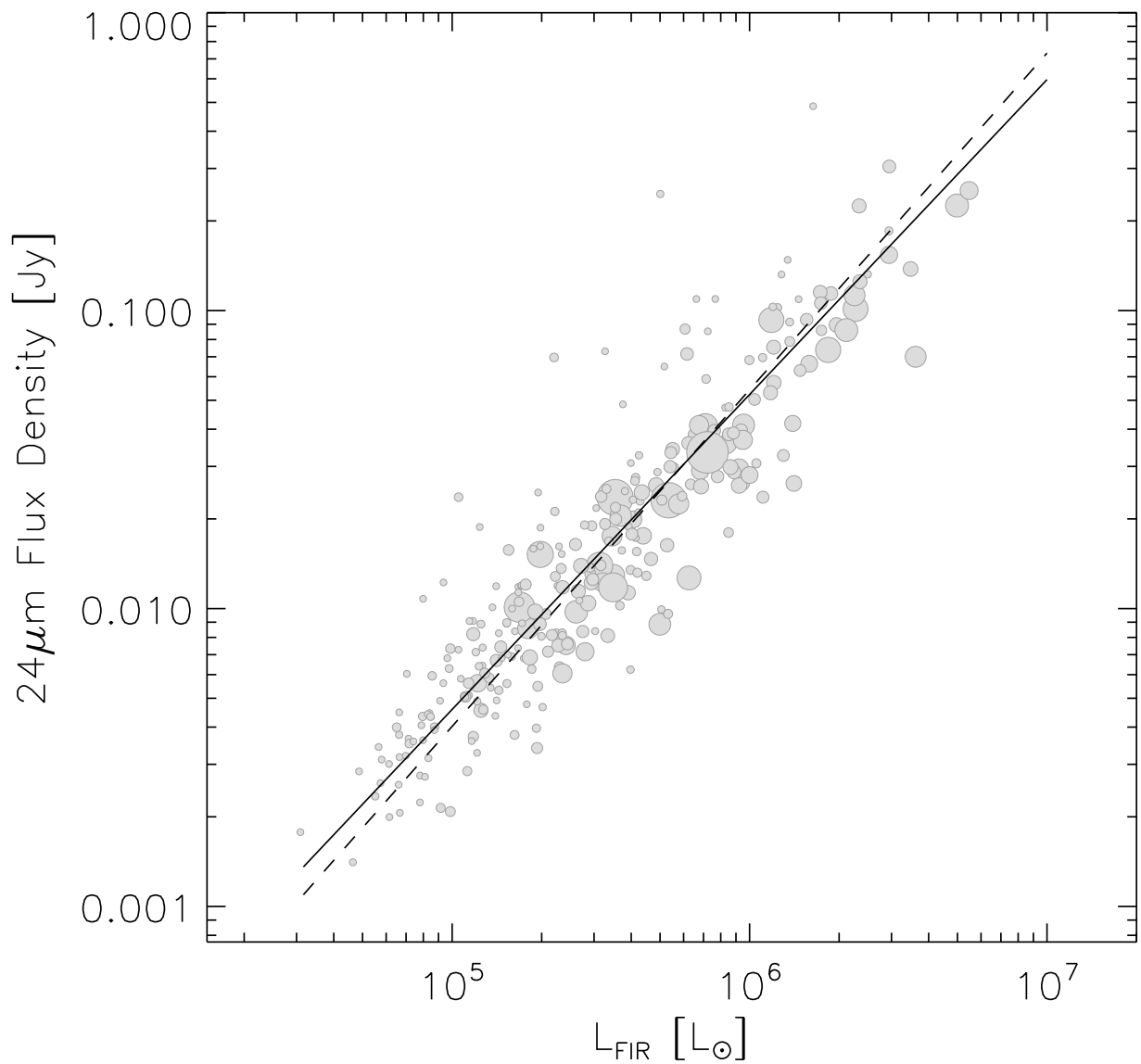


Fig. 9.— A plot showing the correlation between FIR luminosity and mid-infrared flux density. The width of the symbols shows the relative radius of the clouds. The solid line is a line of best fit, the correlation coefficient is 0.9. The dashed-line indicates the slope of the relationship from Vutisalchavakul & Evans (2013).

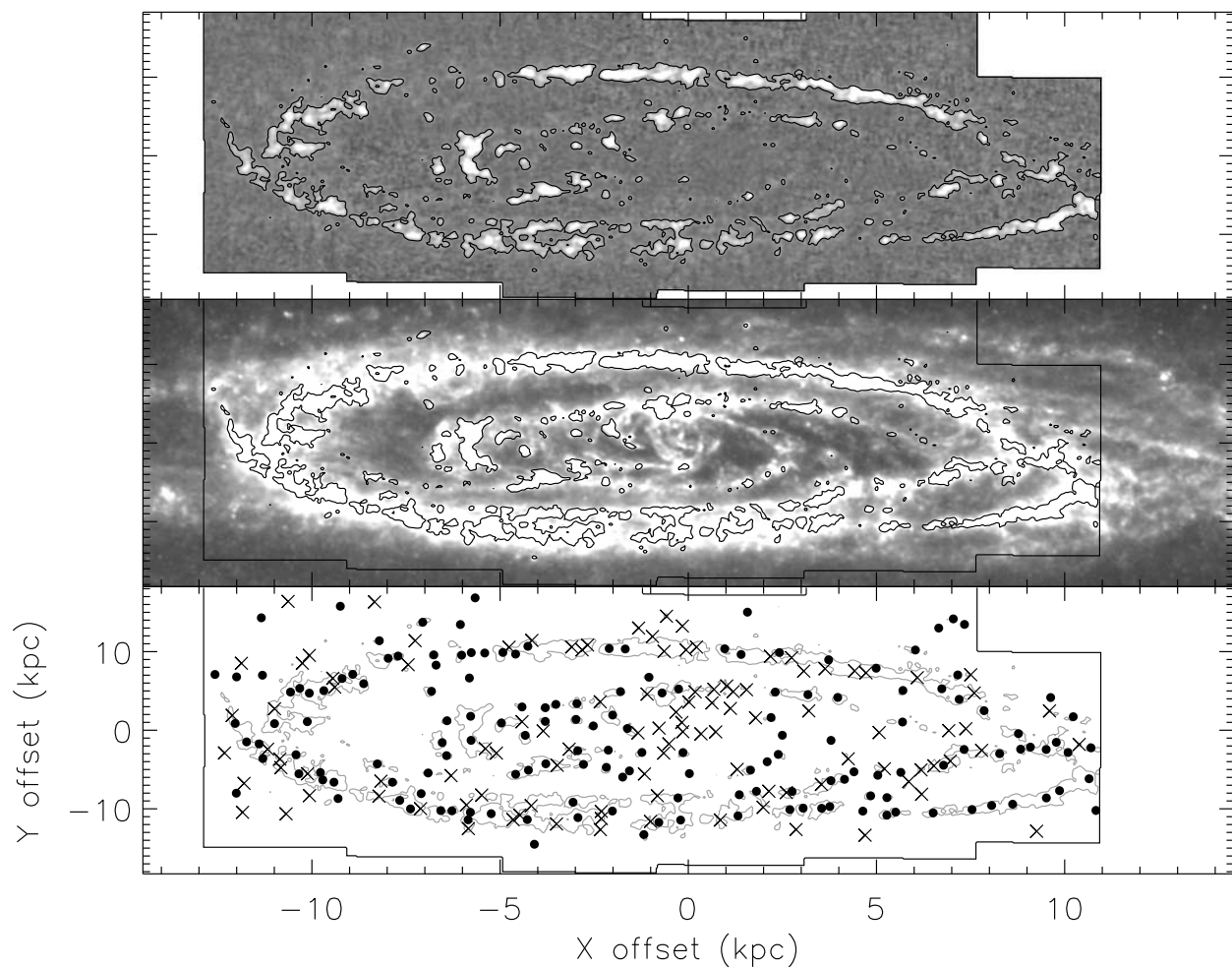


Fig. 10.— Comparison of top: IRAM ^{12}CO integrated emission (Nieten et al. 2006) and middle: SPIRE $250\mu\text{m}$ dust emission towards the Andromeda Galaxy. The bottom panel shows which of the *Herschel* GMCs were detected (solid circle) or not-detected (crosses) in CO emission. The same $10\text{-}\sigma$ ^{12}CO contour is plotted over each map.

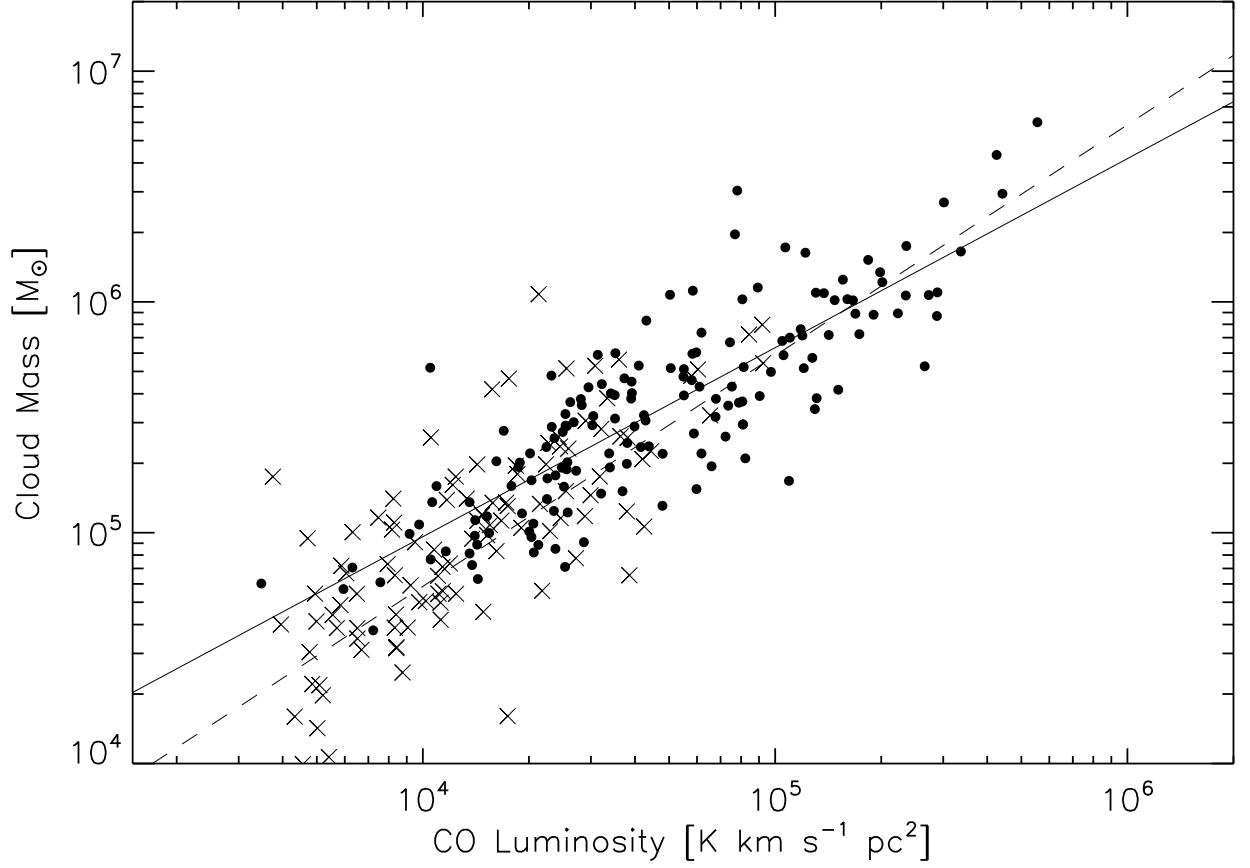


Fig. 11.— Cloud ^{12}CO luminosity versus total mass derived from the far-infrared. The solid line shows a best fit power with an exponent of 0.82 ± 0.05 . The dashed line shows the α_{CO} relationship from Paper II.

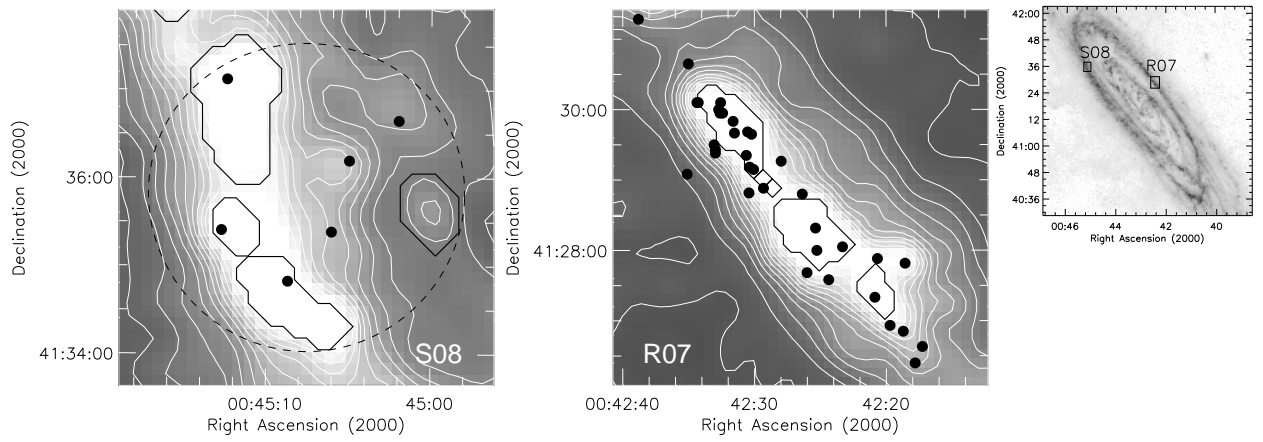


Fig. 12.— Comparison of SPIRE $250\mu\text{m}$ results to BIMA interferometric sources. Left-panel based on Fig. 1 of Sheth et al. (2008). Middle-panel based on Fig. 3 Field A from Rosolowsky (2007). The dots show the positions of interferometry CO clouds. The large dashed circle shows the limit of the Sheth et al. (2008) map. The thick-black contours show the location and extent of sources from this paper. The greyscale and contours are SPIRE $250\mu\text{m}$ data. The contours are spaced at 5σ intervals. The smaller right-hand panel shows the location of the other two panels.

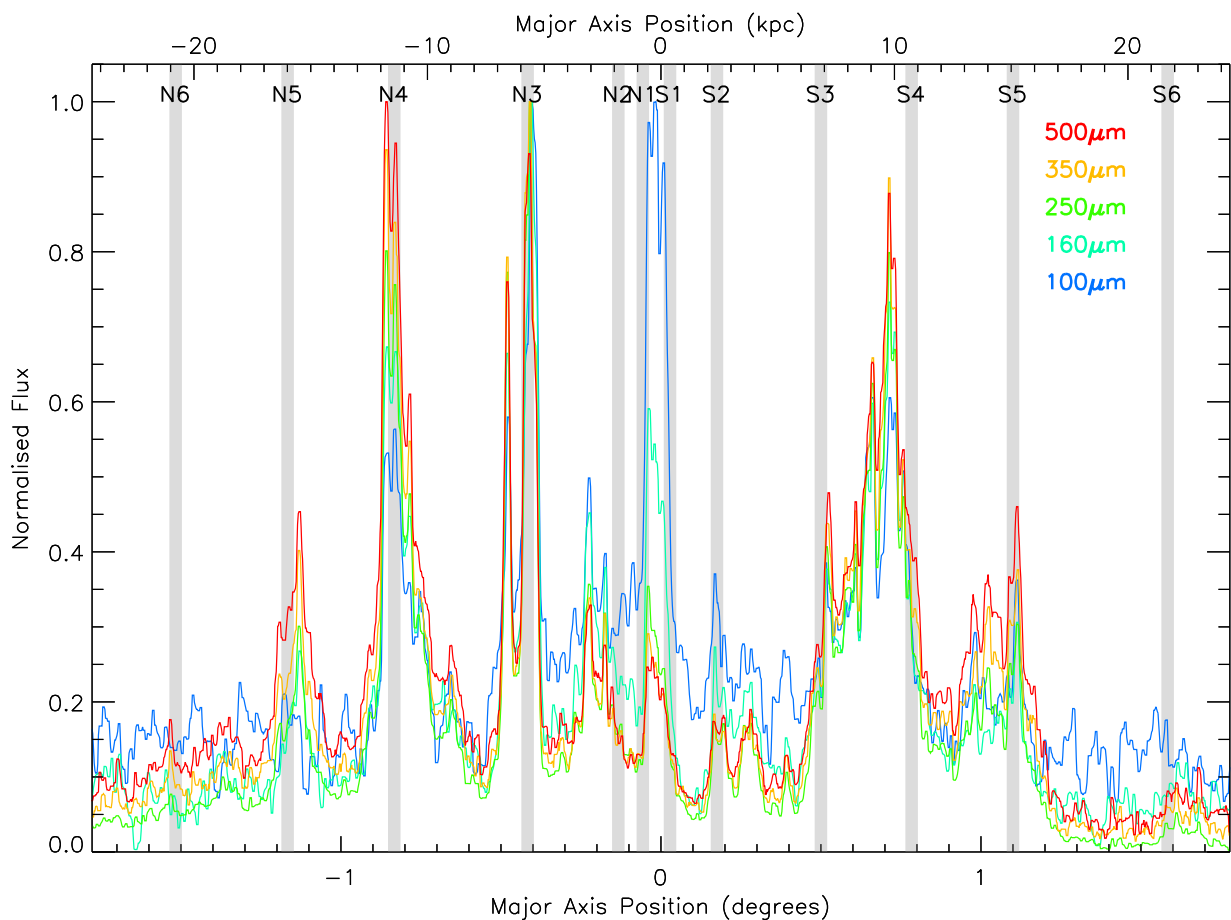


Fig. 13.— Normalized intensity slices along the major-axis of M31 from PACS $100\mu\text{m}$ (blue) to *Herschel* SPIRE $500\mu\text{m}$ (red), the key in the top-right shows the color assigned to each wavelength. The positions of the arm crossing points from Baade (1963) are annotated as N1–6 and S1–6.

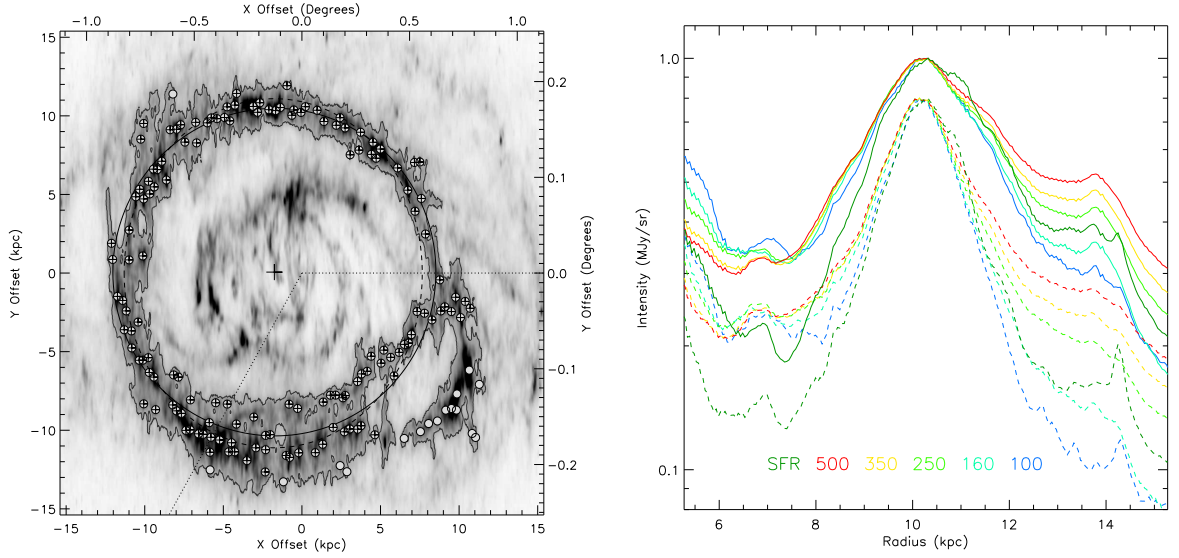


Fig. 14.— **(left)** An enlargement of the center of Andromeda. The greyscale is the deprojected SPIRE $250\mu\text{m}$ map. The black contour is the 10 kpc Ring node from Figure 3. The clouds of the Ring are shown by the circle markers, those involved in the final Ring fit have a cross inside the markers (see text for details). The solid and dashed circles show the Ring fitted with assumed inclination angles of 77° and 75° respectively. The dotted lines show the PA range $120\text{--}240^\circ$. **(right)** A circularly-averaged profile of 10 kpc Ring. The solid lines show the *Herschel* wavelengths (see key for colors) averaged over all position angles. The dashed lines show the profiles excluding the data from the position angle range $120\text{--}240^\circ$.

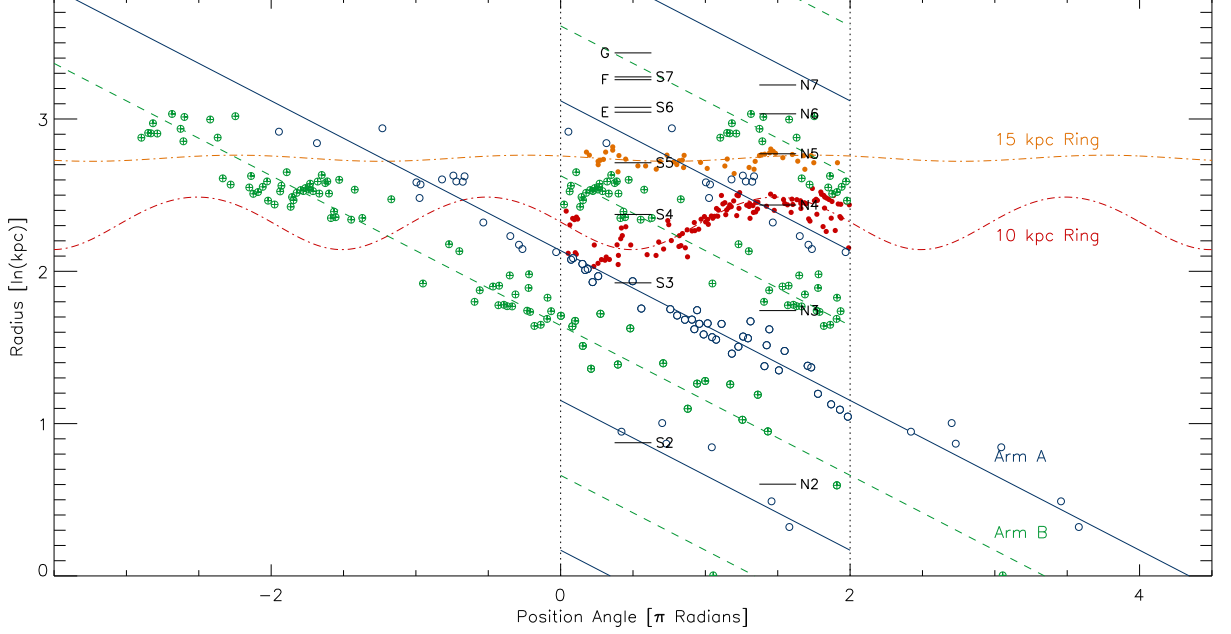


Fig. 15.— Polar coordinate plot of M31 GMCs. All GMCs are shown for a single $0\text{--}2\pi$ radians range. GMCs used to fit the 10 or 15 kpc Ring are shown by solid markers. The offset circle fits to the Rings are shown by the dot-dashed sinewaves. GMCs used to fit the spiral arms are shown by the open circles. The GMCs associated with Arm B are differentiated from those associated with Arm A by a cross inside their marker. The best-fit logarithmic spirals are shown by the solid line (Arm A) and the dashed line (Arm B). These Arm fits are replicated in the $0\text{--}2\pi$ radians range to show how they wrap. Additionally, for each Arm we unwrap and replicate the GMCs associated with it to show the full fit. The arms have the same pitch angle and are a rotation of one another. The Baade (1963) arm crossing regions are annotated. The E, F, and G features reported by Paper I are shown by the short horizontal lines. In the online version of this image the features associated with Arm A, Arm B, the 10 kpc Ring, and the 15 kpc Ring are respectively color coded green, blue, red, and orange.

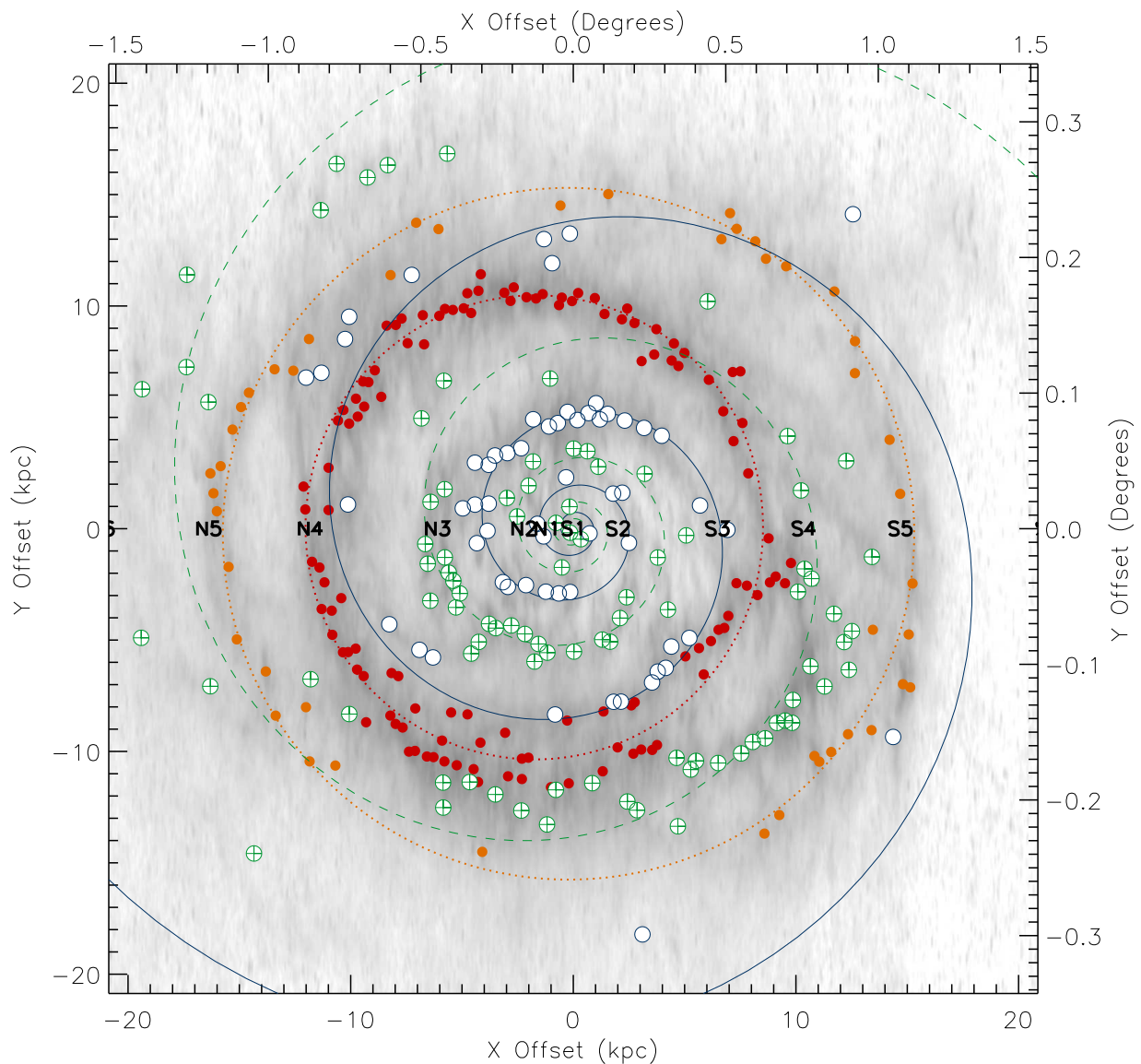


Fig. 16.— M31’s spiral arms. The 10 and 15 kpc Rings are shown by dotted circles. GMCs associated with the arms are shown by open markers, GMCs associated with Arm B are differentiated by the cross over their marker. The best-fit logarithmic spirals are shown by the solid line (Arm A) and the dashed line (Arm B). The Baade (1963) arm crossing regions are annotated. In the online version of this image the features associated with Arm A, Arm B, the 10 kpc Ring, and the 15 kpc Ring are respectively color coded green, blue, red, and orange.

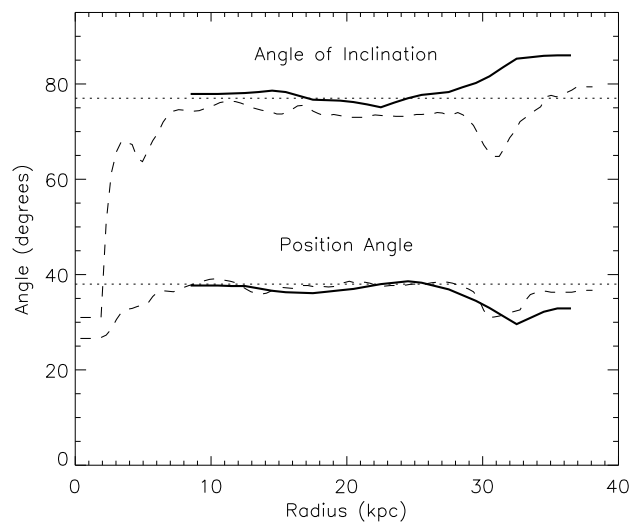


Fig. 17.— Inclination angles (top) and position angles (lower) from the Chemin (dashed-lines) and Corbelli (solid-lines) tilted-ring models. The dotted-lines show the values adopted by HELGA.

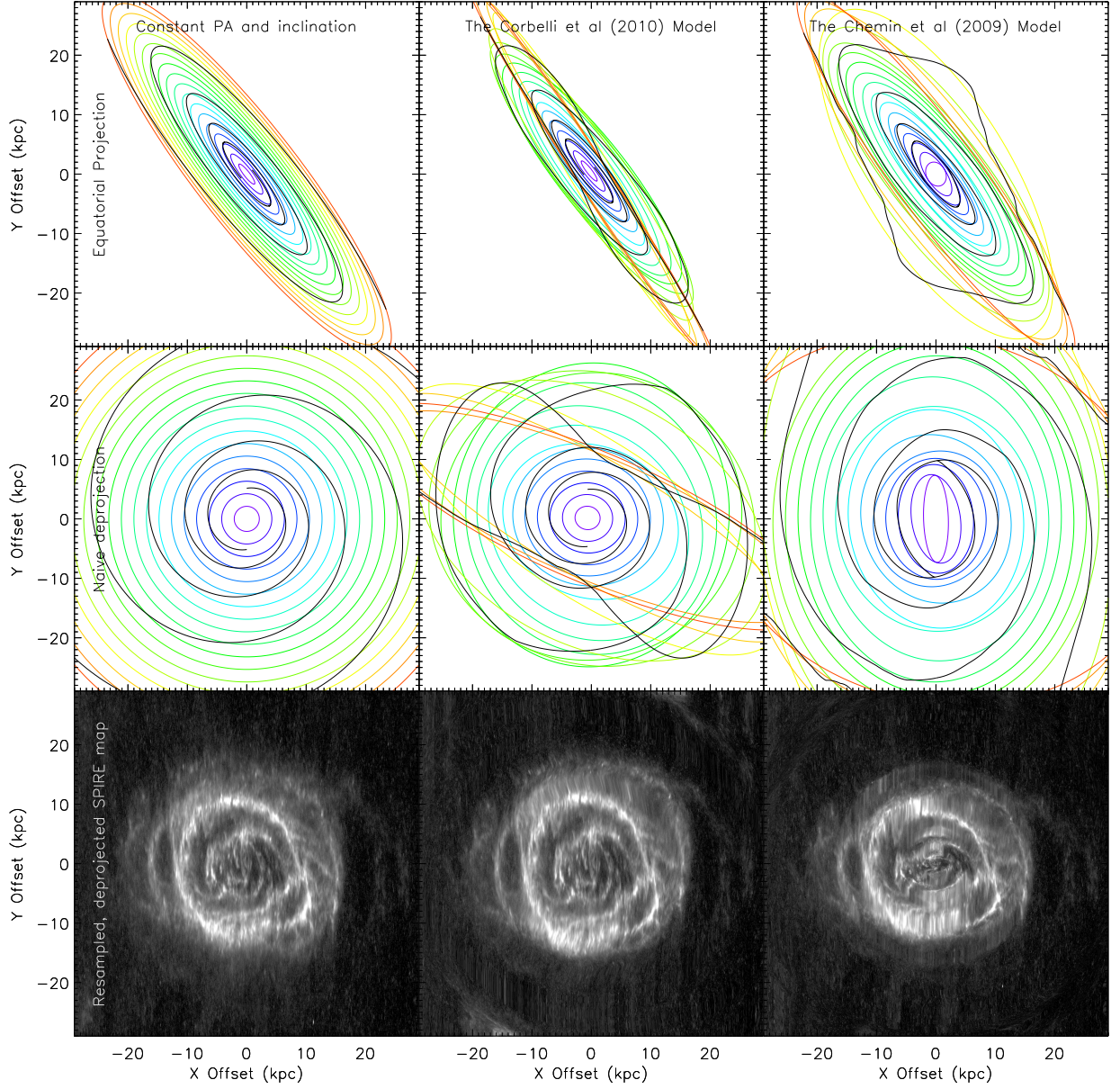


Fig. 18.— The effects of deprojection scheme on structure in M31. A toy model of concentric rings (colored circles) overlain by twin-spiral arms (black curves) is taken as the initial conditions. The top row shows the toy model projected into equatorial equivalent offsets, the middle row shows the equatorial equivalent projection deprojected under the assumption of constant i and θ , and the bottom row shows the deprojected SPIRE $350\mu\text{m}$ maps. Three projection models are shown: the left-hand column shows the results of using constant i and θ , the middle column shows the Corbelli Model, and the right-hand column shows the Chemin Model.

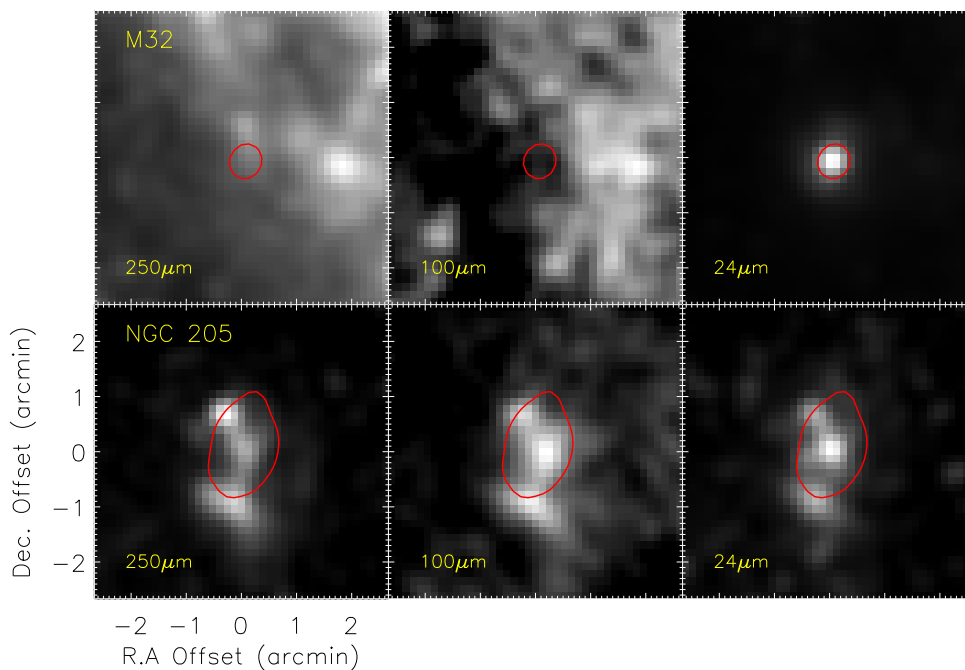


Fig. 19.— Two of the satellites of Andromeda, M32 and NGC 205, showing markedly different emission properties with wavelength. The individual wavelengths are labeled. The data has been convolved to the $350\mu\text{m}$ resolution. The IRAC $3.6\mu\text{m}$ 50% flux contour is shown in red. The position center for M32 is $0^h 42^m 41^s.87$ $40^\circ 51' 57.2''$.50 and for NGC 205 is $0^h 40^m 00^s.08$ $41^\circ 41' 07.1''$.50.