

Central Lancashire Online Knowledge (CLoK)

Title	An ammonia spectral map of the L1495-B218 filaments in the Taurus molecular cloud. I. Physical properties of filaments and dense cores
Type	Article
URL	https://clock.uclan.ac.uk/14598/
DOI	https://doi.org/10.1088/0004-637X/805/2/185
Date	2015
Citation	Seo, Young Min, Shirley, Yancy L., Goldsmith, Paul, Ward-Thompson, Derek, Kirk, Jason Matthew, Schmalzl, Markus, Lee, Jeong-Eun, Friesen, Rachel, Langston, Glen et al (2015) An ammonia spectral map of the L1495-B218 filaments in the Taurus molecular cloud. I. Physical properties of filaments and dense cores. <i>The Astrophysical Journal</i> , 805 (2). p. 185. ISSN 1538-4357
Creators	Seo, Young Min, Shirley, Yancy L., Goldsmith, Paul, Ward-Thompson, Derek, Kirk, Jason Matthew, Schmalzl, Markus, Lee, Jeong-Eun, Friesen, Rachel, Langston, Glen, Masters, Joe and Garwood, Robert W.

It is advisable to refer to the publisher's version if you intend to cite from the work.
<https://doi.org/10.1088/0004-637X/805/2/185>

For information about Research at UCLan please go to <http://www.uclan.ac.uk/research/>

All outputs in CLoK are protected by Intellectual Property Rights law, including Copyright law. Copyright, IPR and Moral Rights for the works on this site are retained by the individual authors and/or other copyright owners. Terms and conditions for use of this material are defined in the <http://clock.uclan.ac.uk/policies/>

AN AMMONIA SPECTRAL MAP OF THE L1495-B218 FILAMENTS IN THE TAURUS MOLECULAR CLOUD. I. PHYSICAL PROPERTIES OF FILAMENTS AND DENSE CORES

YOUNG MIN SEO¹, YANCY L. SHIRLEY^{1,9}, PAUL GOLDSMITH², DEREK WARD-THOMPSON³, JASON M. KIRK³, MARKUS SCHMALZL⁴, JEONG-EUN LEE⁵, RACHEL FRIESEN⁶, GLEN LANGSTON⁷, JOE MASTERS⁸, AND ROBERT W. GARWOOD⁸¹Department of Astronomy & Steward Observatory, University of Arizona, 933 N. Cherry Ave., Tucson, AZ 85721, USA²Jet Propulsion Laboratory, California Institute of Technology, Pasadena, CA 91109, USA³Jeremiah Horrocks Institute, University of Central Lancashire, Preston PR1 2HE, UK⁴Leiden Observatory, Leiden University, PO Box 9513, 2300 RA, Leiden, The Netherlands⁵Department of Astronomy and Space Science, Kyung Hee University, Yongin-si, Gyeonggi-do 446-701, Korea, South Korea⁶The Dunlap Institute for Astronomy and Astrophysics, University of Toronto, 50 St. George St., Toronto, ON M5S 3H4, Canada⁷National Science Foundation, Astronomy, 4201 Wilson Boulevard, Arlington, VA 22230, USA⁸National Radio Astronomy Observatory, 520 Edgemont Rd., Charlottesville, VA 22903, USA

Received 2014 September 3; accepted 2015 March 17; published 2015 June 2

ABSTRACT

We present deep NH₃ observations of the L1495-B218 filaments in the Taurus molecular cloud covering over a 3° angular range using the *K*-band focal plane array on the 100 m Green Bank Telescope. The L1495-B218 filaments form an interconnected, nearby, large complex extending over 8 pc. We observed NH₃ (1, 1) and (2, 2) with a spectral resolution of 0.038 km s⁻¹ and a spatial resolution of 31". Most of the ammonia peaks coincide with intensity peaks in dust continuum maps at 350 and 500 μm. We deduced physical properties by fitting a model to the observed spectra. We find gas kinetic temperatures of 8–15 K, velocity dispersions of 0.05–0.25 km s⁻¹, and NH₃ column densities of 5 × 10¹² to 1 × 10¹⁴ cm⁻². The CSAR algorithm, which is a hybrid of seeded-watershed and binary dendrogram algorithms, identifies a total of 55 NH₃ structures, including 39 leaves and 16 branches. The masses of the NH₃ sources range from 0.05 to 9.5 M_⊙. The masses of NH₃ leaves are mostly smaller than their corresponding virial mass estimated from their internal and gravitational energies, which suggests that these leaves are gravitationally unbound structures. Nine out of 39 NH₃ leaves are gravitationally bound, and seven out of nine gravitationally bound NH₃ leaves are associated with star formation. We also found that 12 out of 30 gravitationally unbound leaves are pressure confined. Our data suggest that a dense core may form as a pressure-confined structure, evolve to a gravitationally bound core, and undergo collapse to form a protostar.

Key words: ISM: clouds – ISM: molecules – radio lines: ISM – stars: formation

1. INTRODUCTION

Filaments are common structures in molecular clouds (e.g., Ridge et al. 2006; André et al. 2010, 2013; Men'shchikov et al. 2010). They are important structures in star formation because most dense cores form within filaments and stars form within dense cores. Studies of isolated dense cores suggest that stars form mainly as a result of gravity within dense cores, but the formation of filaments and the evolution from filaments to dense cores are still unclear. Recent theoretical studies of molecular clouds suggest that a filament may form by colliding flows of turbulent media, and some dense parts further undergo contraction by either self-gravity or ram pressure of colliding flows to make dense cores (e.g., Balsara et al. 2001; Padoan et al. 2001; Klessen et al. 2005; Vázquez-Semadeni et al. 2005; Gómez et al. 2007; Nakamura & Li 2008; Heitsch et al. 2008, 2009; Gong & Ostriker 2009, 2011; Chen & Ostriker 2014). Since filaments are formed through colliding flows in this scenario, young and less massive dense cores within the filaments are gravitationally unbound, while evolved and massive dense cores tend to be gravitationally bound. Thus, observationally studying the physical state of dense cores within filaments with respect to their evolutionary stage is an essential step to understand how low-mass star formation proceeds within filaments.

The Taurus molecular cloud is one of the best testbeds for studies of both filaments and dense cores because it is nearby ($D \sim 140$ pc; Loinard et al. 2007; Torres et al. 2009) and forming low-mass stars (no O and B stars) in a relatively isolated mode (with little spatial confusion; see review by Kenyon et al. 2008). The L1495-B218 filaments are prominent in the Taurus molecular cloud, extending over 3° on the sky. They are known to contain cores that range from chemically young starless cores (e.g., L1521B and L1521E; Tafalla & Santiago 2004; Hirota et al. 2004) to more evolved protostellar cores (in B7/L1495; see Rebull et al. 2010). In addition, this region is well mapped in dust extinction (Schmalzl et al. 2010), dust continuum emission (*Herchel Space Observatory*; Palmeirim et al. 2013), dust polarization (Chapman et al. 2011), low-density molecular gas tracers (¹²CO and ¹³CO, Goldsmith et al. 2008; C¹⁸O, Onishi et al. 1996; Hacar et al. 2013), and a dense gas tracer (N₂H⁺; Hacar et al. 2013). These maps provide basic information on the structure of the filaments and the positions of some of the densest cores.

Hacar et al. (2013) observed the L1495-B218 filaments in C¹⁸O $J = 1-0$ and N₂H⁺ $J = 1-0$. C¹⁸O $J = 1-0$ is a moderate-density ($n_{\text{eff}} \lesssim 10^3$ cm⁻³ at 10 K)¹⁰ gas tracer and is a good tracer with which to study velocity structure of moderate-

¹⁰ n_{eff} is the effective excitation density, which is needed to produce the $T_R = 1$ K line (Evans 1999; Shirley 2015). See Reiter et al. (2011) for a summary of effective excitation densities.

⁹ Adjunct Astronomer at the National Radio Astronomy Observatory, USA.

density regions since its optical depth is much smaller than those of ^{12}CO and ^{13}CO . Using C^{18}O , they estimated the LSR velocities and found that the L1495-B218 filaments are not a single coherent velocity structure but a complex group of at least 35 interwoven filaments. However, C^{18}O does not trace dense cores because CO is depleted onto dust grains at a high density and low temperature (e.g., Kuiper et al. 1996; Willacy et al. 1998; Caselli et al. 1999; Bacmann et al. 2002; Bergin et al. 2002; Tafalla et al. 2002; Pontoppidan 2006; Ford & Shirley 2011). To find dense cores, the authors used N_2H^+ $J = 1-0$, which is a dense gas tracer with an effective excitation density above 10^4 cm^{-3} (Reiter et al. 2011), but the densities that N_2H^+ traces are much higher than those traced by C^{18}O , which suggests that N_2H^+ does not trace the complete population of both young and evolved dense cores within the filaments. In order to identify the complete population of dense cores and probe the transition between filaments and dense cores, observations that trace gas with densities intermediate between those traced by C^{18}O and N_2H^+ are required.

Ammonia is an excellent probe that has an effective excitation density intermediate between C^{18}O and N_2H^+ . Ammonia starts to form at an early stage of prestellar core evolution and becomes brightest during the later stage of prestellar core evolution (Suzuki et al. 1992). NH_3 traces densities $>10^3 \text{ cm}^{-3}$ (Flower et al. 2006; Di Francesco et al. 2007). Owing to the NH_3 chemistry, the ammonia abundance steeply increases as a molecular cloud core becomes denser, and it may be the most abundant molecule after CO that is easily observed within dense cores (Tafalla et al. 2004; Aikawa et al. 2005). Ammonia is also a good tracer for probing the physical condition of filaments. The inversion transitions of ammonia are known to provide an accurate measure of gas kinetic temperature along the line of sight (e.g., Ho & Townes 1983; Rosolowsky et al. 2008) since a transition between meta-stable energy levels is possible only through collisions. If the signal-to-noise ratio (S/N) is large enough, the uncertainty of a kinetic temperature measured using the inversion transitions of ammonia may be as low as 0.1 K. An accurate measurement of the kinetic temperature also permits an accurate determination of non-thermal motions, making ammonia an excellent tracer for investigating kinematics.

We observed the L1495-B218 filaments in NH_3 (1, 1) and (2, 2). The complete map spans over three degrees on the sky and is the largest NH_3 map published to date. In this paper, we present observations of filaments and dense cores traced by the ammonia emission. We analyze the physical properties of nested structure identified in the NH_3 emission. The kinematics will be explored in a subsequent paper. The layout of this paper is as follows: Section 2 briefly introduces our mapping of the L1495-B218 filaments in NH_3 and the data reduction procedures. In Section 3 we present the basic physical properties of the L1495-B218 filaments and the dense structures identified by the Cardiff Source-finding Algorithm (CSAR) algorithm within the filaments. In Section 4 we discuss physical states of the dense structures identified by the CSAR algorithm. Finally, in Section 5 we summarize our results.

2. OBSERVATION AND DATA REDUCTION

2.1. Mapping of the L1495-B218 Filaments in NH_3 (1, 1) and (2, 2)

We observed the L1495-B218 filaments in the Taurus cloud using the 100 m Robert C. Byrd Green Bank Telescope (GBT12A295).¹¹ Observations were carried out from 2012 April to 2013 February in 13 shifts totaling 66 hr. We used the K-band focal plane array (KFPA), which has seven beams each with dual polarization in a hexagonal arrangement (for technical properties of the KFPA, see <https://science.nrao.edu/facilities/gbt/observing/GBTog.pdf>). We used the 7+1 mode of the KFPA, which allows the center beam to observe two frequencies simultaneously while the other six beams observe only a single frequency. The bandwidth of each frequency window is 50 MHz. For seven beams, we set the rest frequency to be 23.702 GHz, which is between the strongest hyperfine component of $\text{NH}_3(1, 1)$ (23.6944955 GHz; Lovas & Dragoset 2003) and $\text{NH}_3(2, 2)$ (23.7226333 GHz; Lovas & Dragoset 2003). For the central beam we selected a second frequency to include the CCS $N_J = 2_1 \rightarrow 1_0$ transition (22.344033 GHz; Yamamoto et al. 1990); these results will be reported in a separate paper. The spectrometer is configured to have 16,384 channels across 50 MHz, yielding a resolution of 3.05 KHz (0.0386 km s^{-1} at 23.705 GHz). Since the typical thermal broadening of starless cores is $<0.2 \text{ km s}^{-1}$ (e.g., Jijina et al. 1999; Caselli et al. 2002; Rosolowsky et al. 2008), the line profiles of NH_3 are well resolved in this setup.

We observed the L1495-B218 filaments in 20 rectangular regions that are arranged to cover high-extinction regions (Schmalzl et al. 2010) while minimizing the total observation time. Each rectangular region is $20'$ by $6'$ or $6'$ by $20'$ oriented in Galactic coordinates. Data for each rectangular region are obtained by on-the-fly mapping of 25 rows $20'$ long with a row spacing of $15'.12$. The integration time per row is 150 s. The resulting integration time for a direction observed with all seven beams is ~ 30 s; the total observation time for each rectangular region is 1 hr and 20 minutes. The reference OFF positions are picked to be where the extinction is low enough to suggest that they would have negligible NH_3 emission, and close to each rectangular region. The average of two observations of the OFF position made before and after mapping each rectangular region is subtracted from each on-source observation. We also carried out “daisy” pattern observations to improve the S/N toward 29 bright NH_3 regions that we found from the mapping of rectangular regions. Each daisy pattern observation was made with a radius of $2'.8$ and 22 cycles following a rose curve. The daisy pattern observation completely covers the inner $2'.8$ radius with all seven beams for an average integration time of 38 s. The total integration time for each daisy pattern is 20 minutes. We updated the pointing of the telescope using the quasar 0403+2600 between every mapping of a rectangular region or every three daisy patterns. The pointing corrections were usually less than $10''$, compared to the beam size of the GBT at 23 GHz of $31''$.

Data reduction was performed using the GBT KFPA pipeline. The data are regridded into regularly spaced pixels using AIPS, and the gain of the seven beams is calibrated through observing Venus and Jupiter in every observing shift.

¹¹ The National Radio Astronomy Observatory is a facility of the National Science Foundation operated under cooperative agreement by Associated Universities, Inc.

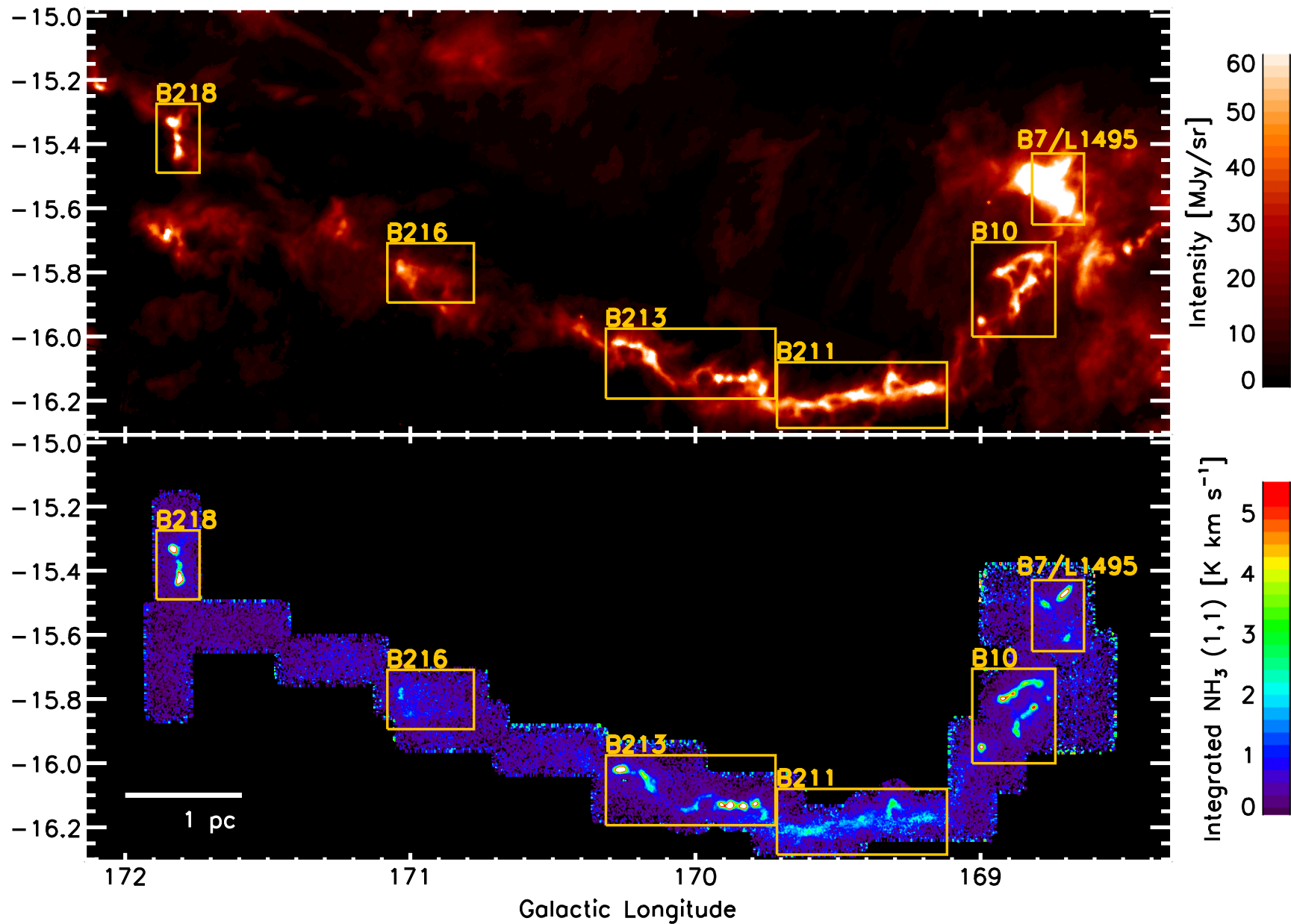


Figure 1. Top: 500 μm dust continuum emission (color) seen by the SPIRE instrument of the *Herschel Space Observatory*. Bottom: map of integrated intensity of NH_3 (1, 1).

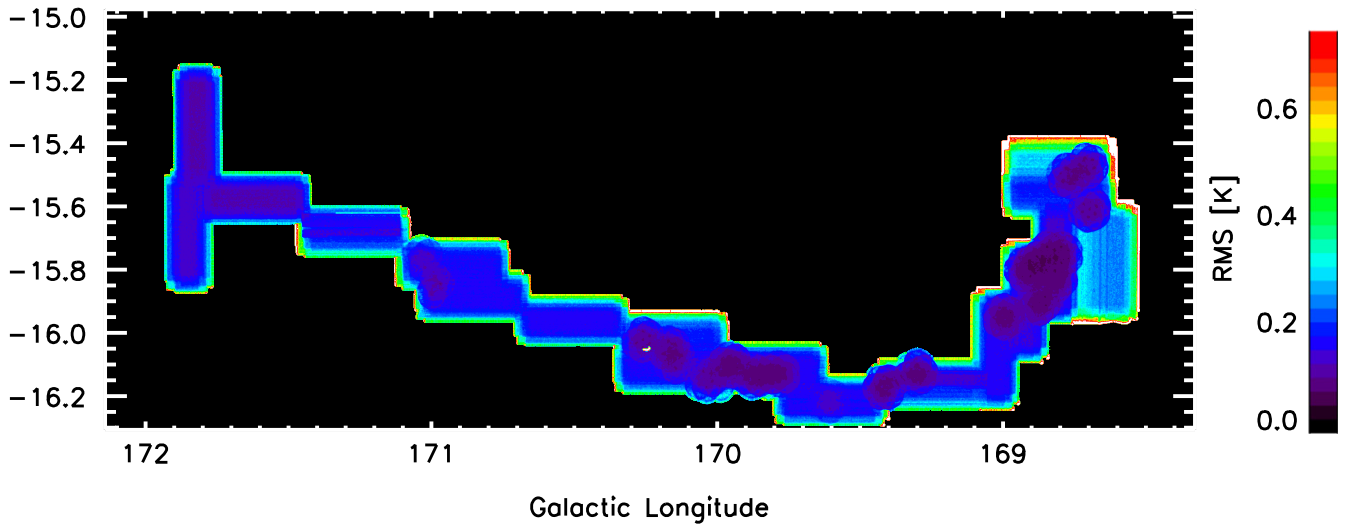


Figure 2. rms of the ammonia T_{mb} map at a spectral resolution of 6.1 kHz (corresponding to 0.077 km s^{-1}), obtained by smoothing two spectral channels.

As a double-check on the absolute flux calibration, we also observed the peak dust continuum position of the L1489PPC starless core ($\alpha = 04:04:47.6$, $\delta = +26:19:17.9$, J2000.0) every observing shift (Young et al. 2004; Ford & Shirley 2011). The calibrations using Venus and Jupiter and the calibration using L1489PPC agreed within 25%.

3. RESULTS

3.1. L1495-B218 Filaments Seen in Ammonia

3.1.1. Integrated Intensity of NH_3 (1, 1) and (2, 2) and Definition of Subregions

Figure 1 presents the integrated intensity of NH_3 (1, 1) emission. The NH_3 (1, 1) map clearly reveals dense cores associated with the L1495-B218 filaments. On the other hand, the filamentary structures between dense cores are barely detected, while those regions are very clearly visible in an extinction map (Schmalzl et al. 2010) and ^{13}CO (Goldsmith et al. 2008; Pineda et al. 2010b). This suggests that the density of filamentary structures between dense cores may not be high enough to form NH_3 efficiently ($n_{\text{H}_2} < 10^3 \text{ cm}^{-3}$; Flower et al. 2006), or that ammonia molecules exist but excitation conditions are insufficient to observe the (1, 1) emission at our average rms level of 120 mK (Figure 2). The NH_3 (2, 2) emission is detected only from dense cores and is much weaker than (1, 1) emission, which implies that the kinetic temperature may be too low to excite to the $J = 2, K = 2$ state except in dense gas of $n_{\text{H}_2} > 10^4 \text{ cm}^{-3}$ (Ho & Townes 1983; Danby et al. 1988; Maret et al. 2009).

We compare our NH_3 (1, 1) emissions with $500 \mu\text{m}$ dust continuum emission seen by the SPIRE instrument of the *Herschel Space Observatory* in Figure 1 (Palmeirim et al. 2013; Marsh et al. 2014). The $500 \mu\text{m}$ dust continuum emission is thermal emission from dust grains and traces the column density structure of the filaments. The bright regions of $500 \mu\text{m}$ and NH_3 (1, 1) emission show good agreement with each other. The $500 \mu\text{m}$ emission is more spatially extended than the NH_3 (1, 1) emission. The lowest $500 \mu\text{m}$ intensity levels at which NH_3 (1, 1) and (2, 2) are detected are 25 MJy sr^{-1} ($N_{\text{H}_2} = 5.6 \times 10^{21} \text{ cm}^{-2}$ at 10 K) and 177 MJy sr^{-1} ($N_{\text{H}_2} = 3.9 \times 10^{22} \text{ cm}^{-2}$ at 10 K),

respectively. This shows that NH_3 is a good tracer with which to identify intermediate to dense regions within filaments.

In Figure 3, we zoom into each region and show the location of protostars identified using *IRAS* and *Spitzer* (Rebull et al. 2011, 2010; Kryukova et al. 2012). We divide the map into subregions based on Barnard’s identification (Barnard et al. 1927). We discuss each region and determine if it is more evolved (having a Class I/flat spectra protostar associated with NH_3 emission) or less evolved below.

B7/L1495 contains multiple Class II and III protostars, two flat spectra protostars, and one Class I protostar, none of which are embedded within the NH_3 core, but there are nearby NH_3 cores. The three dense cores seen in NH_3 are most commonly referred to as L1495A-S, L1495A-N, and L1495B (Lee et al. 2001). In B213 (also referred to as L1521D; Codella et al. 1997), there are two Class I protostars embedded in NH_3 cores in the eastern part of the region and another three Class I protostars in the western part of the region. Therefore, B7 and B213 are the most evolved regions in the L1495-B218 filaments, and B7 is likely to be more evolved than B213 (see Hacar et al. 2013).

B218 has only one flat spectrum protostar embedded within an NH_3 core. Thus, we classify B218 as an evolved region with star formation, although the NH_3 emission is dominated by two bright starless cores. This region is also sometimes confusingly referred to as B217 (Benson & Myers 1989). We use the notation B218 in this paper since it is closer to the original Barnard catalog position of B218 (Kenyon et al. 2008).

B10 also has only one protostar, which is Class II. In this work, we assume that B10 is a less evolved region because there is no other protostar except the one Class II protostar that is not directly associated with any dense cores in the region.

In contrast to the other regions, B211 and B216 show weak NH_3 (1, 1) emission and do not possess any known protostars. Thus, both regions are less evolved. The B216 region is also named L1521B (Lee et al. 2001) and contains starless cores with large abundances of carbon chain molecules (Hirota et al. 2004).

Hacar & Tafalla (2013) have also determined the relative ages of subregions using N_2H^+ 1–0 emission and the locations

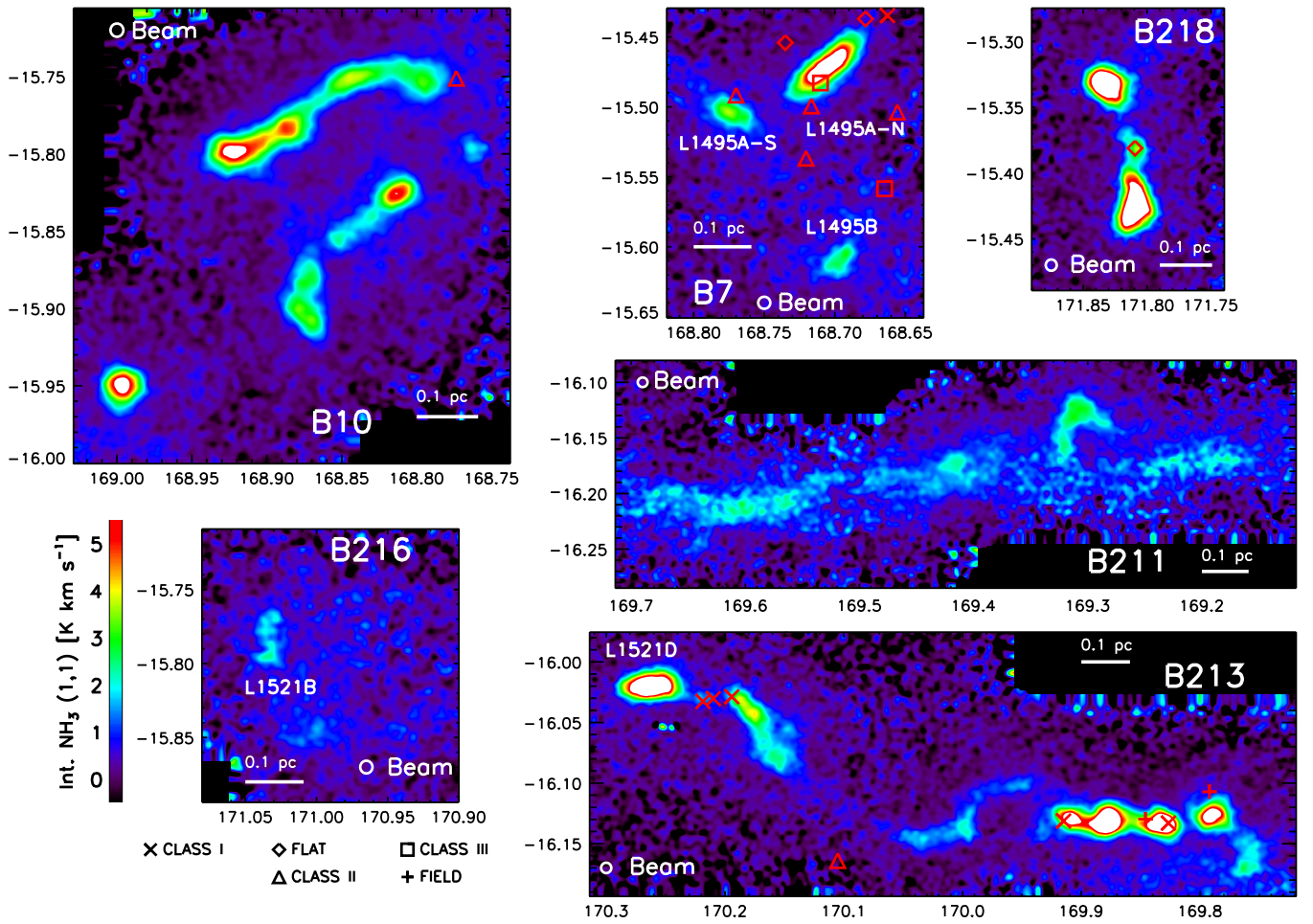


Figure 3. Maps of integrated NH_3 (1, 1) emission and positions of known protostars. The x-axis is galactic longitude, and y-axis is galactic latitude. The names of previously studied cores are indicated in the image.

of protostars. Their estimates of relative age of subregions agree well with ours except for B216. In their observation of N_2H^+ 1–0, they did not detect emission in B216. B216 has weaker NH_3 (1, 1) emission and stronger CCS emission than B211 (Y. M. Seo et al. 2015, in preparation), suggesting that B216 is a younger region. Thus, B211 and B216 are both relatively young and inactive parts of the L1495-B218 filaments, with B216 likely being the most newly condensed part of the filaments.

3.1.2. Spectral Line Fitting

To understand the physical properties of NH_3 structures in the L1495-B218 filaments, we fit a simple NH_3 spectrum model to the observed spectra and deduce physical quantities, including kinetic temperature T_k , excitation temperature T_{ex} , total optical depth of NH_3 (1, 1) emission τ_{l} , dispersion of emission line σ_v , and LSR velocity v_{lsr} (see Appendix A for details of the fitting algorithm). The fitting algorithm includes only one velocity component, and this is satisfactory for all regions in the L1495-B218 filaments except B211 (see Section 3.2.2 for the LSR velocity of NH_3). We only fitted spectra where the detection of NH_3 (1, 1) and (2, 2) emission is above $5\sigma_{T_{\text{mb}}}$ and $3\sigma_{T_{\text{mb}}}$, respectively, where $\sigma_{T_{\text{mb}}}$ is the baseline rms.

3.1.3. Gas Kinetic Temperature and Excitation Temperature

Maps of the gas kinetic temperature deduced from NH_3 (1, 1) and (2, 2) emission are presented in Figure 4. The gas kinetic temperature ranges from 8 to 15 K in most of the region mapped. At the bright NH_3 peaks indicated by red arrows, the kinetic temperature decreases toward the core center. The drop in the kinetic temperature is about -1 to -3 K, or about 10%–30% of the average kinetic temperature of surroundings. This temperature drop may ultimately break the dynamical stability of these dense cores and lead them to collapse (see Khesali et al. 2013).

Figure 5 presents histograms of physical quantities to investigate statistical differences between subregions. In the first panel of Figure 5, we show histograms of the gas kinetic temperature. Medians of the gas kinetic temperature in subregions are all around 9.5 K with less than 1 K deviation (60% of all spectra have kinetic temperature within ± 1 K of 9.5 K). The two less evolved regions, B10 and B216, have lower kinetic temperature than the other more evolved regions (we exclude B211 from discussion because it has multiple velocity components and our NH_3 fitting model works only for a single velocity component). The histograms of the gas kinetic temperature demonstrate the tendency that a less evolved region is cooler than a more evolved region and that a denser region is cooler than a diffuse region if there are no embedded

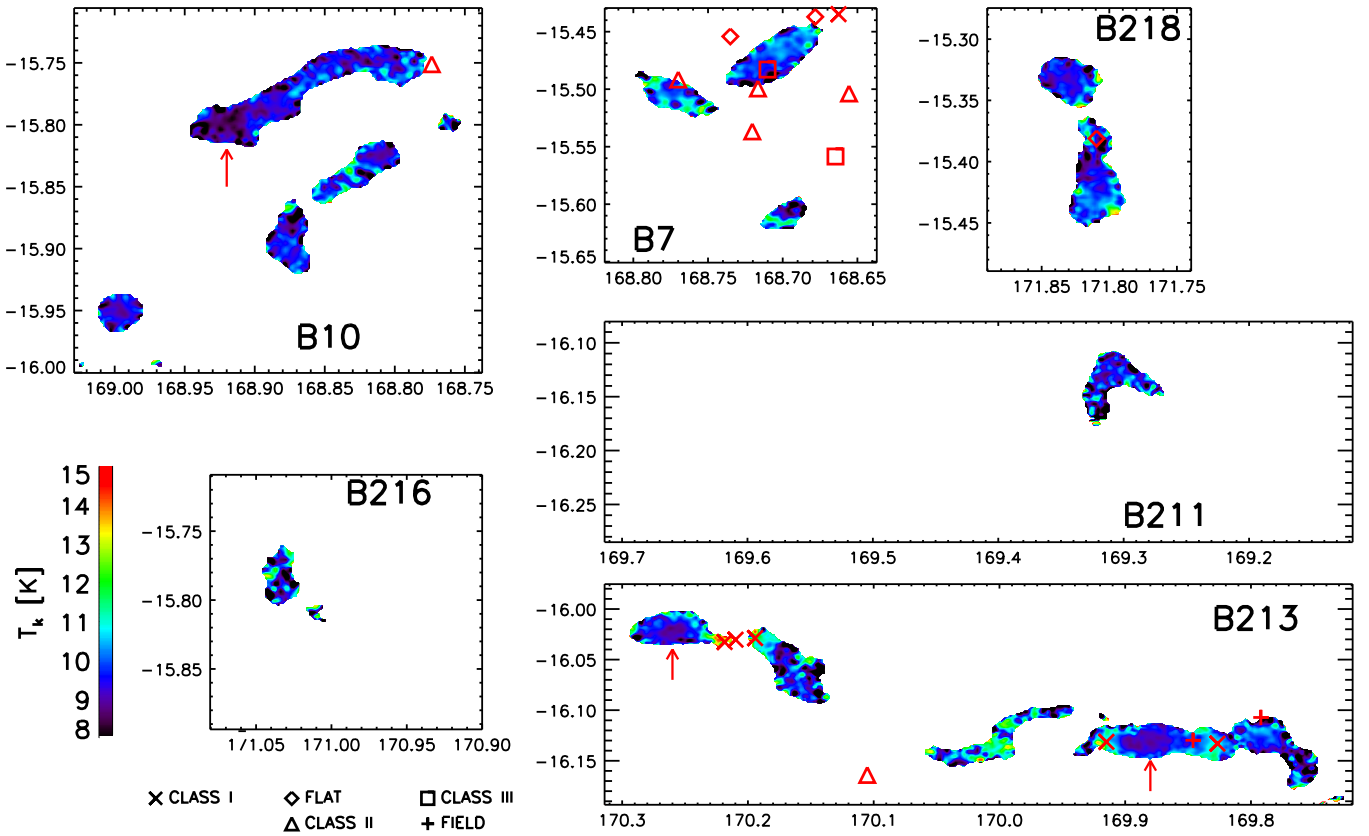


Figure 4. Map of the gas kinetic temperature in L1495-B218 filaments. The x-axis is galactic longitude, and y-axis is galactic latitude. Locations of protostars are marked with various symbols depending on the spectral classification of protostars. Red arrows indicate dense cores having gas kinetic temperatures decreasing toward core centers. Regions with multiple velocity components in B211 are suppressed.

protostars; however, the gas kinetic temperature differences are subtle.

Histograms of NH_3 excitation temperature are shown in the second panel of Figure 5. Median values of the excitation temperature are mostly around 5 K, which is only half of the median values of the kinetic temperature. This demonstrates that NH_3 in all regions is subthermally excited.

3.1.4. LSR Velocity

NH_3 lines at 39 NH_3 integrated intensity peaks in the L1495-B218 filaments are shown in Figures 6 and 7 (for peak locations, see Section 3.2.1). The range of NH_3 v_{LSR} is from 5.0 to 7.2 km s^{-1} , which is the same range seen in the C^{18}O $J = 1-0$ spectra of Hacar et al. (2013). NH_3 structures are confined to a single velocity component except in B211. Comparing NH_3 to C^{18}O (Hacar et al. 2013) and ^{13}CO (Goldsmith et al. 2008), we found that all NH_3 peaks have corresponding velocity components in ^{13}CO , while only 28 out of 39 NH_3 peaks are directly associated with the same velocity components in C^{18}O . Some NH_3 peaks where NH_3 integrated intensity is relatively high ($\geq 40 \text{ K km s}^{-1}$, i.e., four core-like structures neighboring in a row in B213) do not have corresponding velocity components in C^{18}O and ^{13}CO emission. We also found a few NH_3 peaks with both NH_3 and C^{18}O emission but discrepancies in their LSR velocities, which may be a sign of chemical differentiation.

The LSR velocity structure of the L1495-B218 filaments was extensively studied by Hacar et al. (2013) using C^{18}O $J = 1-0$. They identified 35 filaments using a “friend of friends”

algorithm (FIVE; Hacar et al. 2013), and for each filament they deduced physical properties, including mass, dispersion of v_{LSR} , nonthermal motion, and mean kinetic temperature (see Table 3 in Hacar et al. 2013). Using dense cores identified from their N_2H^+ $J = 1-0$ observations, they suggested that only 7 out of 35 filaments are “fertile,” meaning that they contain an N_2H^+ -bright dense core. However, N_2H^+ traces gas with density higher than 10^4 cm^{-3} , which is the central density of relatively evolved dense cores (Lada et al. 2008). It is likely that dense cores at early stages are not fully revealed by N_2H^+ . Ammonia molecules have an intermediate effective excitation density that is between C^{18}O $J = 1-0$ and N_2H^+ $J = 1-0$; therefore, our ammonia map may probe the velocity structure of both developing dense cores and later stages.

Matching the LSR velocity of NH_3 (1, 1) and (2, 2) structures to 35 filaments of Hacar et al. (2013), we found NH_3 (1, 1) emission in filaments 6, 8, 10, 11, 15, 20, 28, and 32 (Table 3 of Hacar et al. 2013). Hacar et al. (2013) suggested that filaments 6, 10, 11, 15, 20, 32, and 34 are fertile (i.e., having dense cores in their N_2H^+ observation). Filament 34 is not within the field of view of our observation, so it is excluded in this study. Our NH_3 observation reveals that two more filaments, 8 and 28, also have NH_3 emission. Hacar et al. (2013) argued that a filament tends to be sterile when the line density of the filament is less than $15 M_{\odot} \text{ pc}^{-1}$, which is the critical density for an isothermal cylinder at 10 K (Stodólkiewicz 1963; Ostriker 1964). Filament 28 has a line density of $24.1 M_{\odot} \text{ pc}^{-1}$ (Hacar et al. 2013), but there was no detection of dense cores in N_2H^+ $J = 1-0$. With our NH_3 observations, we found that there are at least two dense cores in filament 28. On

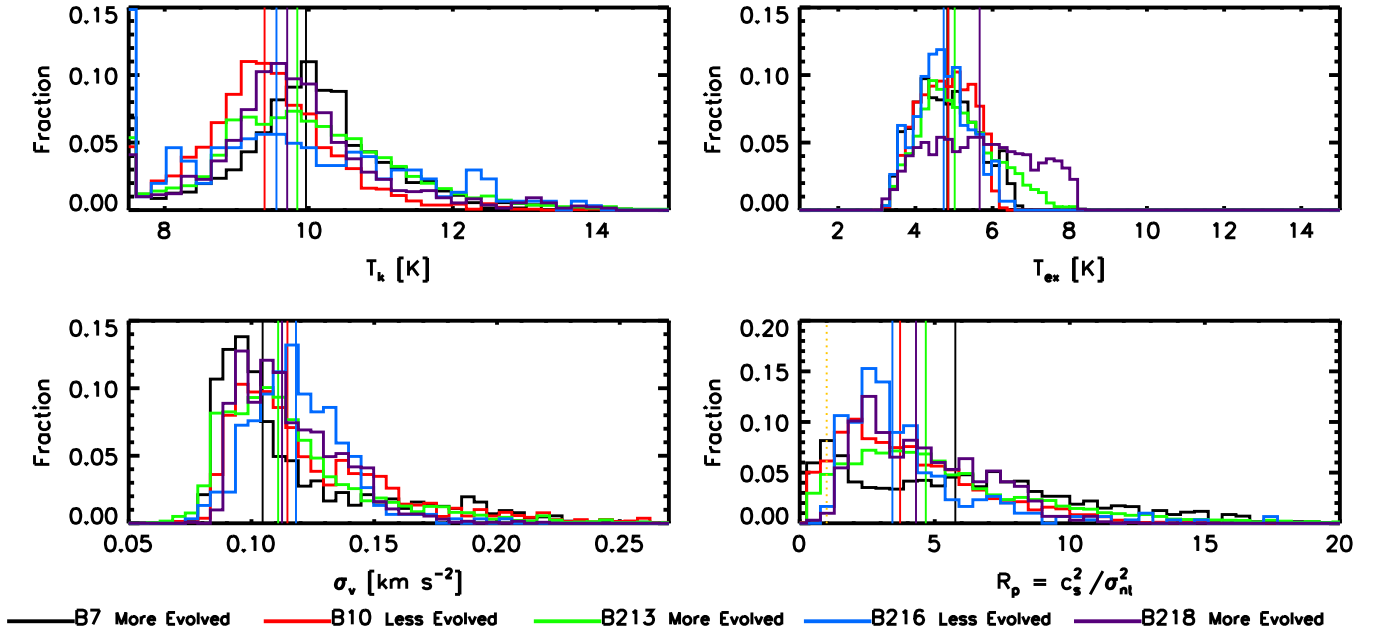


Figure 5. Histograms of physical properties for each region. Vertical lines denote the median values. High fractions at the very left edge of the first panel are due to low S/N level at the edge of map. Those are excluded in estimating median values. B211 is also excluded due to the presence of multiple velocity components. The dotted vertical line in the fourth panel denotes $R_p = 1$.

the other hand, filament 8 has a line density of $9.3 M_\odot \text{ pc}^{-1}$ (Hacar et al. 2013), which is lower than the critical line density, but we see that there is a relatively bright NH_3 core. Since Hacar et al. (2013) estimated the masses of filaments from $\text{C}^{18}\text{O } J = 1-0$, it may be possible that they underestimated the mass due to CO depletion. The filament mass estimated from dust continuum may be larger than mass estimated from $\text{C}^{18}\text{O } J = 1-0$, but the filaments cannot be distinguished along the line of sight, which will result in an overestimation of filament masses. From the fact that filament 8 is relatively bright in NH_3 (1, 1), it is likely that the line density of $9.3 M_\odot \text{ pc}^{-1}$ is the minimum line density of filament 8, and the true line density may be higher than the critical value.

3.1.5. Velocity Dispersion

Velocity dispersions range from 0.05 to 0.25 km s^{-1} except in B211 (B211 has multiple velocity components that are not pursued in this study). Overall, we found that velocity dispersions, which include both thermal and nonthermal components, tend to be wider in the less evolved regions than those in the more evolved regions. Histograms of the velocity dispersions (Figure 5) show this trend clearly. The median value of velocity dispersions for the least evolved region, B216, is 0.118 km s^{-1} , while the most evolved region, B7, has a median dispersion equal to 0.104 km s^{-1} (the thermal velocity dispersion of NH_3 at 10 K is 0.069 km s^{-1}).

Using accurate gas kinetic temperatures deduced from NH_3 (1, 1) and (2, 2), we estimate the velocity dispersions of nonthermal kinetic motions σ_{nt} (Figure 8) as follows:

$$\sigma_{\text{nt}} = \sqrt{\sigma_v^2 - \frac{kT_k}{\mu_{\text{NH}_3} m_{\text{H}}}}, \quad (1)$$

where k is Boltzmann's constant, μ_{NH_3} is the molecular weight of ammonia (17 a.m.u.), and m_{H} is the mass of a hydrogen atom. We find that most regions of the filaments are supported

mainly by thermal pressure (the fourth panel in Figure 5), while some edges of filaments are dominated by nonthermal support ($\sigma_{\text{nt}} \geq \sigma_{\text{thermal}} = 0.188 \text{ km s}^{-1}$ at $T_k = 10 \text{ K}$ and $\mu = 2.33$). The median ratio of thermal support to nonthermal support ($R_p \equiv c_s^2 / \sigma_{\text{nt}}^2$) is around 5. In addition, the median ratio of thermal support to nonthermal support tends to be larger for more evolved regions (median $R_p = 6.3$ in the more evolved region B7, while $R_p = 3.7$ in the less evolved region B216). This suggests that nonthermal motions are considerably dissipated in more evolved regions, making it easier to initiate star formation, which has been seen toward dense cores in other molecular clouds (e.g., Goodman et al. 1998; Pineda et al. 2010a; Tatematsu et al. 2014).

3.2. Dense NH_3 Structures within the L1495-B218 Filaments

3.2.1. Identifying Dense Structures in the L1495-B218 Filaments

The L1495-B218 filaments have many dense cores in different evolutionary stages of star formation, ranging from starless to protostellar cores. We use our ammonia observations to identify dense cores in the L1495-B218 filaments using the CSAR (Kirk et al. 2013), which uses both a seeded-watershed and dendrogram algorithm to find clumpy structures and their spatial relationships. We used the integrated intensity of the central hyperfine group (the strongest hyperfine group of nitrogen splitting) of NH_3 (1, 1) to identify dense structures because the central hyperfine group gives the highest S/N compared to the other four hyperfine groups. Parameters in the CSAR algorithm are set to find structures above a 7.5σ integrated intensity level in the (1, 1) transition ($\sim 3\sigma$ in (2, 2) transition) and to identify a clump with a size larger than $\theta_{\text{mb}}/2 \sim 15''$ (*fullbeam* option) and a 2σ enhancement in intensity from its background. We also used the *removeedge* option in order not to have overextended edges for a source. In this study, we use 2σ as an intensity interval to clip intensity

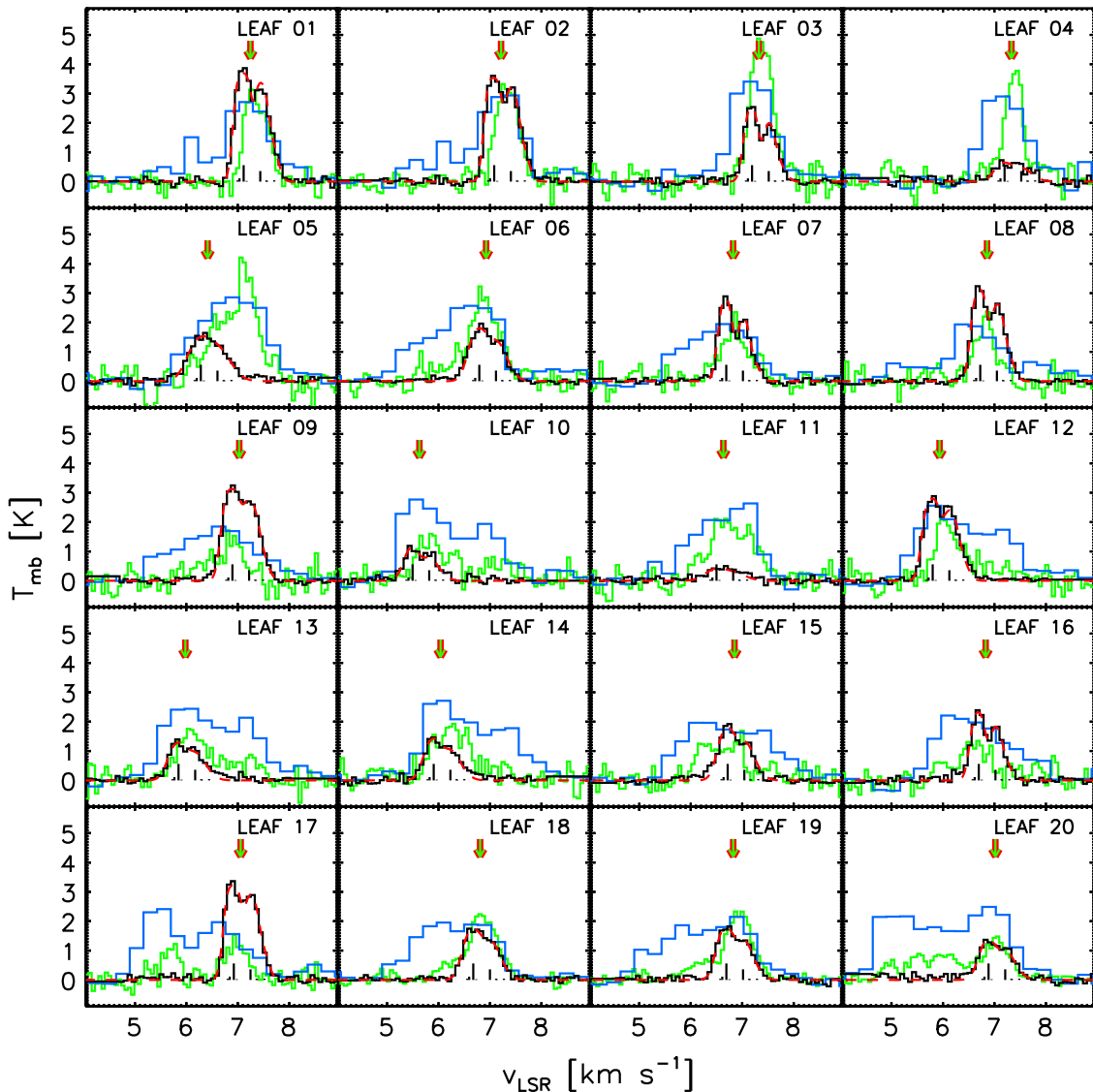


Figure 6. NH_3 (1, 1) lines (black histograms), the best-fit single-component NH_3 (1, 1) model (dashed red lines), C^{18}O 1–0 (green histograms; Hacar et al. 2013), and ^{13}CO 1–0 (Goldsmith et al. 2008; Narayanan et al. 2008) at the NH_3 peak positions of NH_3 leaves identified by CSAR. Black vertical lines denote locations and relative strength of NH_3 (1, 1) hyperfine lines. Red-green arrows denote the LSR velocities of NH_3 leaves. ^{13}CO and C^{18}O have multiple velocity components in some of the NH_3 leaves, but NH_3 seems to be confined to one velocity component and is well fitted with an NH_3 line model with a single velocity component.

peaks instead of using the typical value of 3σ because with the 3σ intensity interval the CSAR algorithm tends to combine two peaks as one elongated clumpy structure. These peaks typically lie on top of nested sources that are many σ brighter than their background. The CSAR algorithm also had trouble in excluding intensity spikes at edges of maps that have a high noise level ($\sigma_{T_b} \geq 0.3$ K). In order to exclude the edges of NH_3 maps, we made 12 patches and applied the CSAR algorithm to each patch.

The main reason we use NH_3 (1, 1) instead of dust continuum is because NH_3 emission acts as a volume density filter. From the excitation curve of NH_3 (1, 1), the effective excitation density varies slowly over the range of gas kinetic temperature from 7 to 15 K. The excitation temperature of dense structures identified by the CSAR algorithm is typically above 3.2 K, and the effective excitation density for the range of observed gas kinetic temperature and NH_3 abundance varies only from 7×10^2 to 1×10^3 cm^{-3} . This suggests that NH_3 (1, 1) emission naturally filters out regions with a density

lower than $\sim 7 \times 10^2$ cm^{-3} . This may make NH_3 structures appear smaller than corresponding dust continuum structures, but the NH_3 sources identified by the CSAR algorithm are true structures in volume density, whereas analysis in dust continuum sees only an enhancement in total column density.

From the integrated intensity of the central hyperfine group of NH_3 (1, 1), we found 39 leaves (a leaf: a structure containing an intensity peak) and 16 branches (a branch: a nested group of leaves). Figure 9 shows the locations of NH_3 leaves, and Figure 10 shows hierarchy among NH_3 leaves and branches in a dendrogram. The dendrogram has no lowest common branch because NH_3 (1, 1) structures are highly fragmented due to the volume density and chemical filtering. In this study we refer to “active” leaves as those that have a Class I or flat spectrum protostar within their lowest-level branches in the dendrogram (also known as root) or within a distance of three times their radius. Note that this definition means that active leaves could be either starless or protostellar. Only four

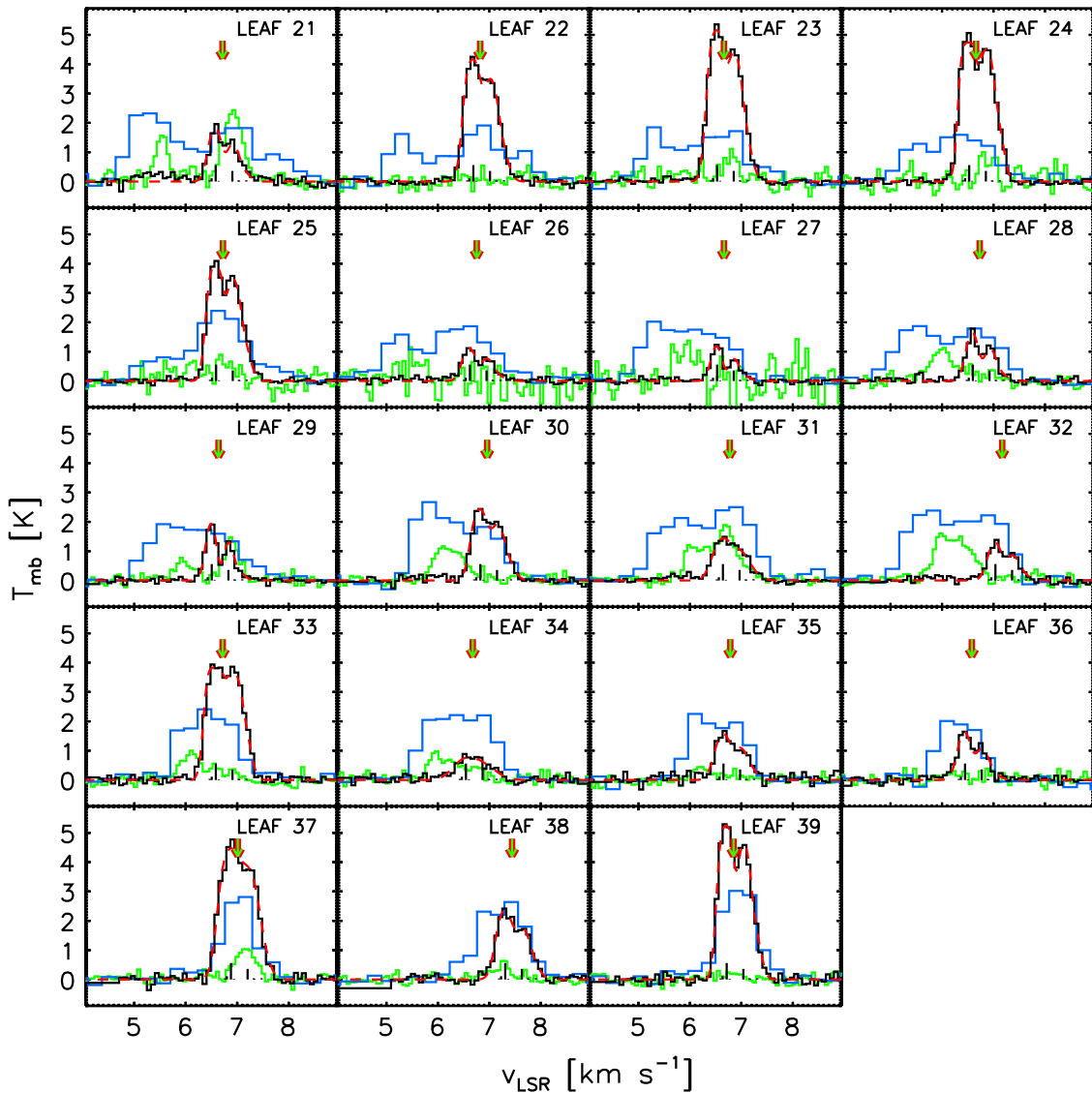


Figure 7. Continued from Figure 6.

leaves have embedded protostars, and 17 leaves are classified as active. Hacar et al. (2013) found 19 dense cores in N_2H^+ 1–0, while CSAR finds 39 leaves in NH_3 (1, 1). This difference may be because NH_3 is an intermediate-density gas tracer that reveals more cores than the denser gas tracer N_2H^+ , and our NH_3 observations ($\theta_{mb} \sim 31''$) have better angular resolution than the N_2H^+ observation ($\theta_{mb} \sim 50''$).

For the comparison between dust and NH_3 , we also identified dust cores using CSAR. From the 500 μm dust continuum data of the *Herschel Space Observatory* ($\theta_{mb} \sim 36''$), we found 51 dust leaves. Figure 11 shows the locations and boundaries of dust leaves. A total of 32 dust leaves coincide with 38 NH_3 leaves, while 19 dust leaves do not agree with any NH_3 leaf. Nine of the dust leaves contain at least two NH_3 leaves. This suggests that there may be multiple dense cores or fragments within a core since NH_3 is sensitive to volume density whereas the dust continuum is optically thin and depends on the total column density.

In order to compare how well dust continuum and NH_3 agree with each other, we investigate the separation of the dust peak position and the NH_3 peak position in a dust leaf associated

with an NH_3 leaf. Most of the NH_3 peak positions show agreement with corresponding dust peak positions with a median separation of $18''.7$, which is slightly larger than half the FWHM beam size. However, there are four dust leaves having a separation between dust and NH_3 peaks larger than $30''$ (the maximum separation is $66''.2$), and three out of four are associated with a nearby protostar (Class I or flat spectrum). This suggests that a large separation may be due to a chemical effect produced by the radiation from a protostar. The fact that most of the NH_3 sources agree with the dust sources demonstrates that NH_3 sources identified by CSAR may represent dense structures within the L1495-B218 filaments. In the following subsections all of the analyses are done with NH_3 sources determined from our NH_3 data.

3.2.2. Size and Mass

The physical properties of NH_3 leaves and branches are summarized in Tables 1–3. The quoted kinetic temperature and velocity dispersion are the median values estimated from NH_3 fittings within NH_3 leaves and branches except for NH_3 leaf 11.

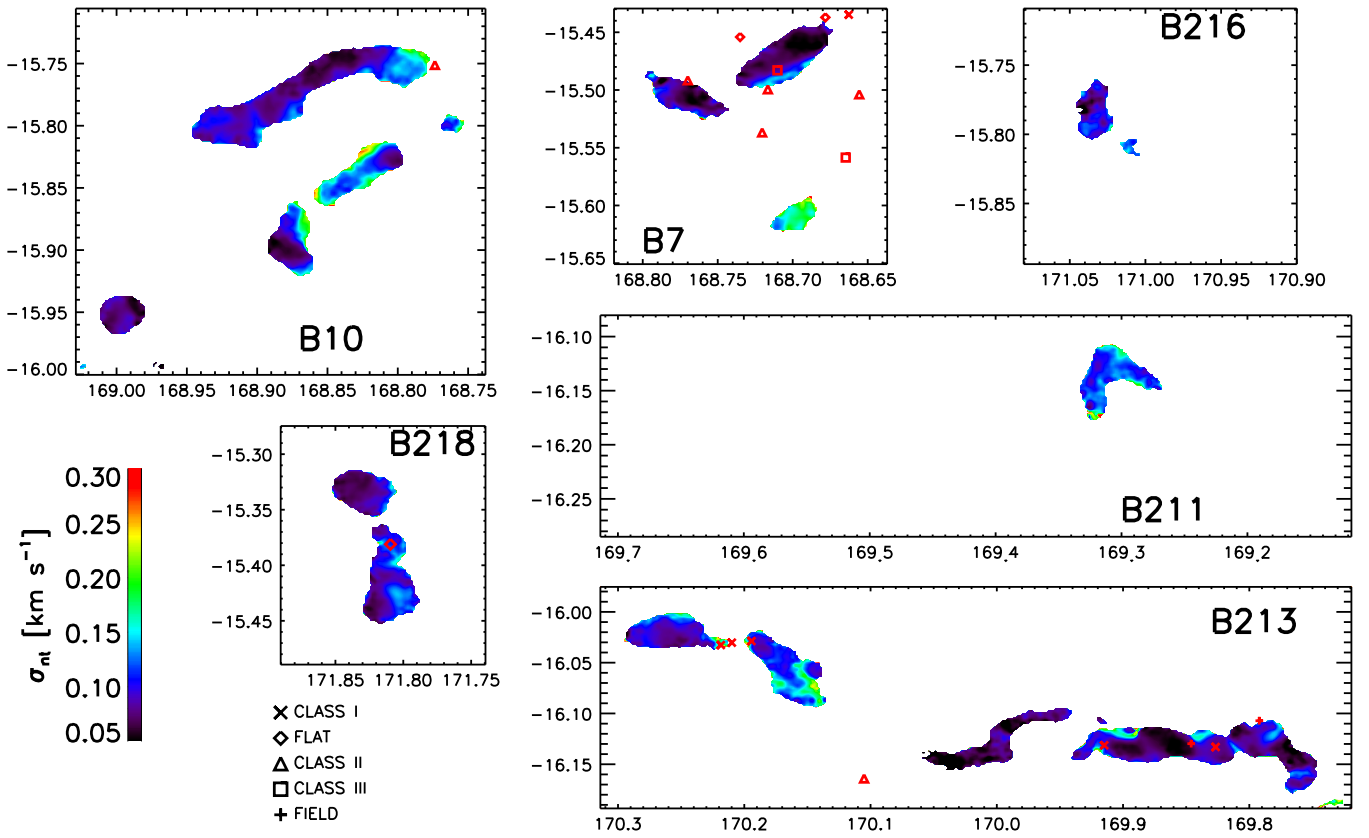


Figure 8. Velocity dispersions of nonthermal components. The x -axis is the galactic longitude, and y -axis is the galactic latitude. Locations of protostars are marked with various symbols depending on spectral classification of protostars. Regions with multiple velocity components in B211 are suppressed.

This has a peak NH_3 (1, 1) line intensity weaker than 5σ except at its peak location, so we fit the NH_3 line at the peak intensity location.

The column density of molecular hydrogen within each structure is estimated from the $500 \mu\text{m}$ continuum of *Herschel Space Observatory* using the following equation:

$$N_{\text{H}_2} = \frac{S_\nu}{\mu m_{\text{H}} B_\nu(T_{\text{dust}}) \kappa_\nu \Omega_{\text{ap}}} \frac{m_{\text{gas}}}{m_{\text{dust}}}, \quad (2)$$

where N_{H_2} is column density of H_2 molecules, S_ν is observed flux at frequency ν , μ is mean molecular weight, m_{H} is mass of the hydrogen atom, B_ν is blackbody radiation at frequency ν , T_{dust} is temperature of a dust grain, κ_ν is opacity of a dust grain at frequency ν , Ω_{ap} is the solid angle used in the observation, and $m_{\text{dust}}/m_{\text{gas}}$ is dust-to-gas ratio, which we set to 0.01. In this work, we assume $T_{\text{dust}} = T_k$, where T_k is the kinetic temperature deduced from our ammonia observations. μ is 2.8. We use κ_ν of $5.04 \text{ cm}^2 \text{ g}^{-1}$ (OH5), which is column 5 of the ‘‘MNR with thin ice mantle’’ model from Ossenkopf & Henning (1994). The peak H_2 column density of NH_3 sources in the L1495-B218 filaments ranges from 6.0×10^{21} to $4.3 \times 10^{22} \text{ cm}^{-2}$, which is similar to the typical dense core column density in other molecular clouds (e.g., Jijina et al. 1999; Rosolowsky et al. 2008).

We define the size of an NH_3 source as the radius of a circle that has an area equal to that of an NH_3 CSAR leaf contour. In the L1495-B218 filaments, the FWHM from Gaussian fitting may not be a useful representation of the size of a dense core

because the FWHM contour of a dense core often overlaps with the FWHM contour of its neighboring dense core. Since CSAR separates neighboring sources through hierarchical structure, we use the area identified by CSAR to estimate the size of a structure. Structures were found on scales ranging from $2 \times 10^{-2} \text{ pc}$ (4375 AU) to 0.1 pc (20,000 AU).

The masses of NH_3 sources are estimated by summing up the column density deduced from $500 \mu\text{m}$ continuum within each NH_3 leaf and branch (Table 2 and black circles in Figure 10). This is a typical method for estimating mass of a dense source since three-dimensional morphology is usually unknown. If three-dimensional morphology is known or assumed, mass of a local background may be subtracted, which will result in a smaller dense source mass than the dense source mass estimated by simply summing up the column density. The resulting masses of NH_3 leaves range from 0.05 to $4.3 M_\odot$, which are similar to typical dense core masses observed in other studies (0.1 – $10 M_\odot$; Onishi et al. 1996, 2002; Motte et al. 1998, 2001; Schmalzl et al. 2010; Kirk et al. 2013). The masses of NH_3 branches range from 0.78 to $9.5 M_\odot$. In addition, we also compared three different methods of determining masses of NH_3 leaves in Table 2 and Figure 12 (mass estimated from dust continuum, virial mass shown in Section 4.1, and mass estimated from NH_3 column density with the fractional abundance of NH_3 relative to hydrogen molecules being 1.5×10^{-9}). The masses are strongly correlated with each other, with a Spearman’s rank correlation coefficient of $\rho = 0.93$. This strong linear correlation suggests that the assumptions (i.e., opacity and temperature) used to derive mass from the dust emission do not have strong

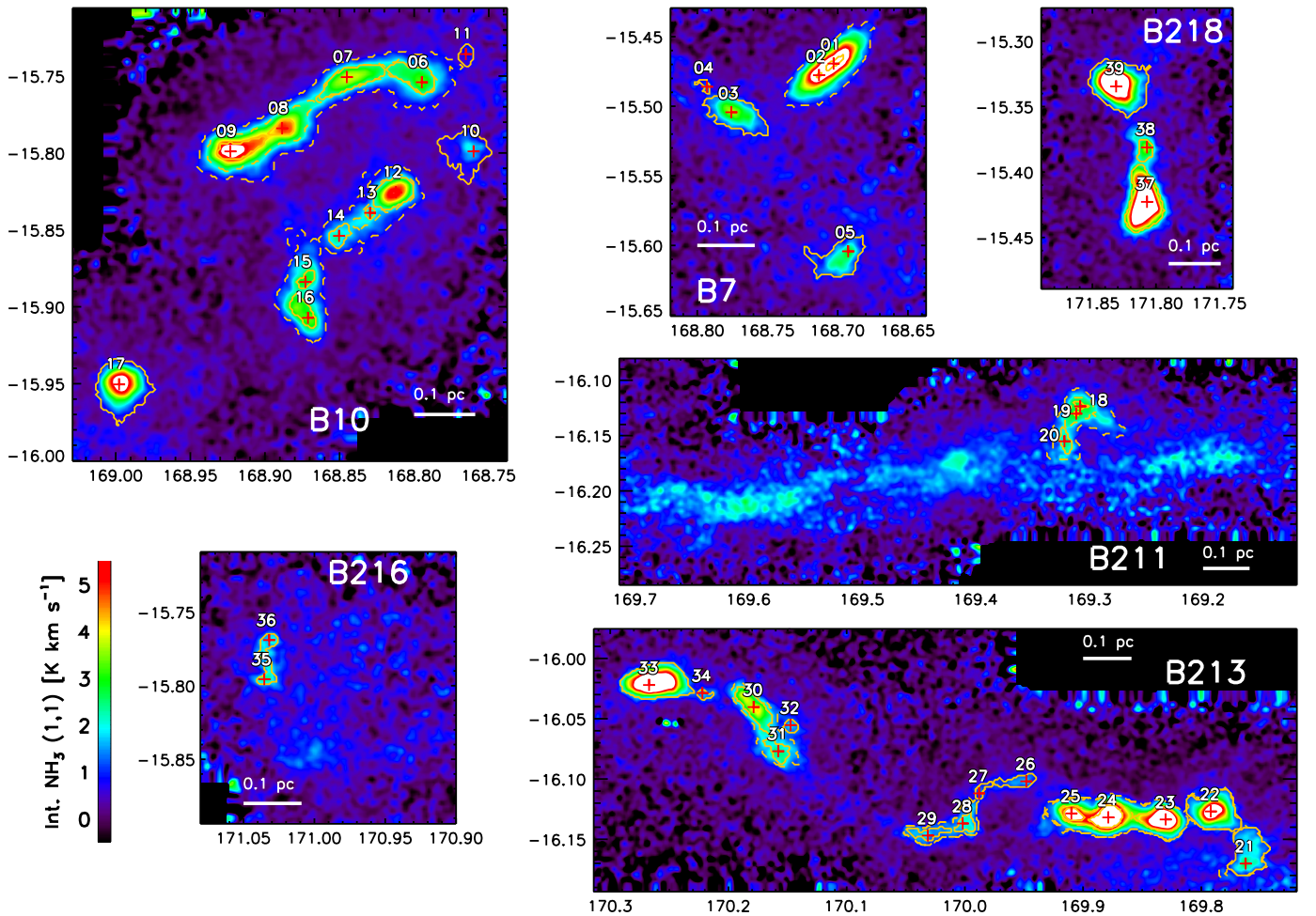


Figure 9. Location of NH_3 leaves. Solid and dashed orange contours are NH_3 leaves and branches, respectively, identified by CSAR.

systematic variations from the lowest-mass to highest-mass leaves. It also suggests that the properties derived from NH_3 sources identified by CSAR are representative of the properties of dense regions in the L1495-B218 filaments, regardless of whether those regions are traced by dust emission or NH_3 .

We also compared nonthermal support to thermal support within NH_3 leaves identified by CSAR in Figure 12. All of the NH_3 sources are dominated by thermal support, with an average value of $R_p = c_s^2/\sigma_{\text{nt}}^2$ equal to 4.9, and there is no dependency on R_p versus mass. This shows that nonthermal motions are efficiently dissipated in dense regions, making it easier to initiate star formation.

3.2.3. Shape and Orientation

The two-dimensional morphology of the NH_3 sources is estimated using the moment of integrated intensity of NH_3 (1, 1) with the center at the location of the intensity peak within a leaf or a branch. From the moment of integrated intensity we derive the principal axes, the axis ratios, and the angles with respect to galactic longitude, which are also summarized in Table 3. The distribution of angles of NH_3 leaves with respect to their lowest-level branches in the dendrogram is shown in the third panel of Figure 13. The minimum and the maximum phase angles of NH_3 leaves with respect to their lowest-level branches are -49° and 53° , respectively. Most of the NH_3 leaves are well aligned with their lowest-level

branches within a range of $\pm 40^\circ$. Since a lowest-level branch corresponds to a filament, this suggests that NH_3 leaves are well aligned with filaments and were likely formed within the filaments.

The axis ratio of the NH_3 leaves is estimated as short axis/long axis (Table 3). The distribution of axis ratios is shown in the fourth panel of Figure 13. The axis ratios range from 0.2 to 1.0 and are mostly around 0.5, which is close to the average value obtained from dense core observations by Myers et al. (1991). In order to deduce the three-dimensional morphology of NH_3 leaves, we compared the observed axis ratio distribution to the probability distribution of apparent axis ratios of spheroids using a Monte Carlo method (see Appendix B for more details). We found the best-fit axis ratio distribution when the spheroids are prolate and the orientation angles (the angle between the equatorial planes of spheroids and the observer's line of sight) range from -80° to 80° (thick solid line in the fourth panel of Figure 13). The parameters of the prolate spheroids of the best-fit model are a mean axis ratio (short axis/long axis) of 0.40 and a dispersion of 0.11 with $\chi^2 = 5.92$. We could not fit the distribution model using oblate spheroids within 3σ uncertainty ($\chi^2 = 9$) unless we limit the orientation angles much narrower than the observed distribution of the angles between the axes of NH_3 leaves and the axes of filaments (third panel of Figure 13). Thus, the NH_3 leaves are more likely prolate spheroids than oblate spheroids.

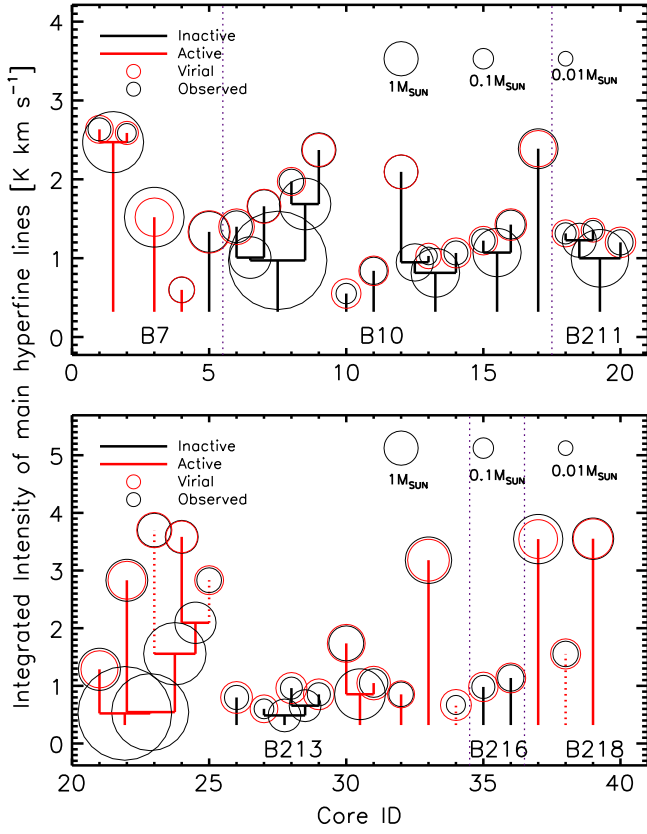


Figure 10. Dendrogram of NH_3 sources. Red solid lines denote active leaves (leaves that are embedding a Class I/flat spectrum protostar within their lowest-level branches or closely associated with a Class I/flat spectrum protostar within three times their leaf radii), and dashed red lines denote active leaves with an embedded protostar. Black circles indicate the mass of NH_3 sources estimated from $500\ \mu\text{m}$ dust continuum. Red circles denote the virial mass. Purple dashed vertical lines indicate different subregions.

4. DISCUSSION

The physical and dynamical properties of dense structures depend on the history of their formation. Theoretical studies of molecular filament and dense core formation in a turbulent environment (the gravoturbulence fragmentation scenario) show that a molecular cloud fragments and develops local density enhancements by colliding flows of turbulence and the density enhancements are grown by self-gravity to evolve into filaments and dense cores. Dense structures formed following this scenario tend to be pressure confined in their early evolution stage and proceed to a gravitationally bound state. On the other hand, dense cores formed in a quiescent, magnetized environment are typically gravitationally bound through their evolution since fragmentation typically takes place when a structure loses support against gravity. In addition, three-dimensional morphologies and alignments of dense structures with magnetic fields also depend on the history of their formation. In a quiescent environment, magnetic fields play an important role in shaping and aligning dense structures, while the magnetic fields may not play a major role in determining the properties of dense structures in a turbulent environment. In this section, we discuss the dynamical status, three-dimensional morphologies, and statistical properties of dense structures in the L1495-B218 filaments, as well as uncertainties in our analysis.

4.1. Virialization

We investigate the dynamical states of NH_3 leaves using the virial theorem. An equation of the virial theorem without magnetic contributions is

$$\frac{1}{2} \frac{d^2 I}{dt^2} = W + 2(T + \Pi) - \int p \vec{x} \cdot \hat{n} dS \quad (3)$$

where I is the moment of inertia, W is the gravitational energy, T is the kinetic energy of systemic motions, Π is the internal energy of thermal and nonthermal motions, and the integral term is the work done by the external pressure p . S is the core surface, and \hat{n} is the unit vector perpendicular to the core surface. We omitted the terms related to magnetic fields because there is no measurement of magnetic fields within NH_3 leaves. There are studies using the virial theorem including all terms except magnetic fields (e.g., Hunter 1979; Seo et al. 2013), but only the gravitational and the internal energies are conventionally used for studying dynamical stability of a dense core in observational studies because it is hard to estimate other terms. We also start with only the gravitational and the internal energies in estimating the virial mass and further check whether or not the pressure term is important in confining dense cores. We assume a time-independent steady state so that $d^2 I/dt^2 = 0$.

We assumed an NH_3 leaf as a homoeoidal ellipsoid with density falling as $\rho \sim r^{-\beta}$ (Bertoldi & McKee 1992). The gravitational energy of a homoeoidal ellipsoid is

$$W = -\frac{3}{5} \frac{1 - \frac{\beta}{3}}{1 - \frac{2\beta}{5}} \frac{GM^2}{R} \frac{\arcsin e}{e}, \quad (4)$$

where e is the eccentricity of a homoeoidal ellipsoid and R is the semimajor axis. The internal energy is estimated by

$$\Pi = \frac{3}{2} M \bar{\sigma}_v^2, \quad (5)$$

where $\bar{\sigma}_v$ is a representative value of velocity dispersion including thermal and nonthermal motions within an NH_3 leaf. It can be either the average, median, or mass-weighted values. In this study, we use median values of σ_v within NH_3 leaves. Finally, the virial mass when $W = 2U$ is given as

$$M_{\text{vir}} = 5 \frac{1 - \frac{2\beta}{5}}{1 - \frac{\beta}{3}} \frac{R \bar{\sigma}_v^2}{G} \frac{e}{\arcsin e}. \quad (6)$$

We first estimated a virial mass with $\rho \sim r^{-2}$ ($\beta = 2$), which is listed in Table 2. The eccentricities of leaves are estimated from the axis ratios of NH_3 leaves, which are given in Table 3. The virial masses of NH_3 leaves are shown as red circles in Figure 10. The virial mass is calculated for only the NH_3 leaves because the NH_3 branches usually have either very elongated or irregular shapes, which makes it difficult to calculate the virial mass with conventional assumptions. We find that 30 out of 39 leaves have observed masses smaller than their corresponding virial masses (the first panel in Figure 13), which suggests that most leaves are gravitationally unbound (the median ratio is about 2). Seven out of nine gravitationally bound leaves are active (red), while only 2 out of 22 inactive (blue) leaves are gravitationally bound. A virial mass of a homoeoidal ellipsoid

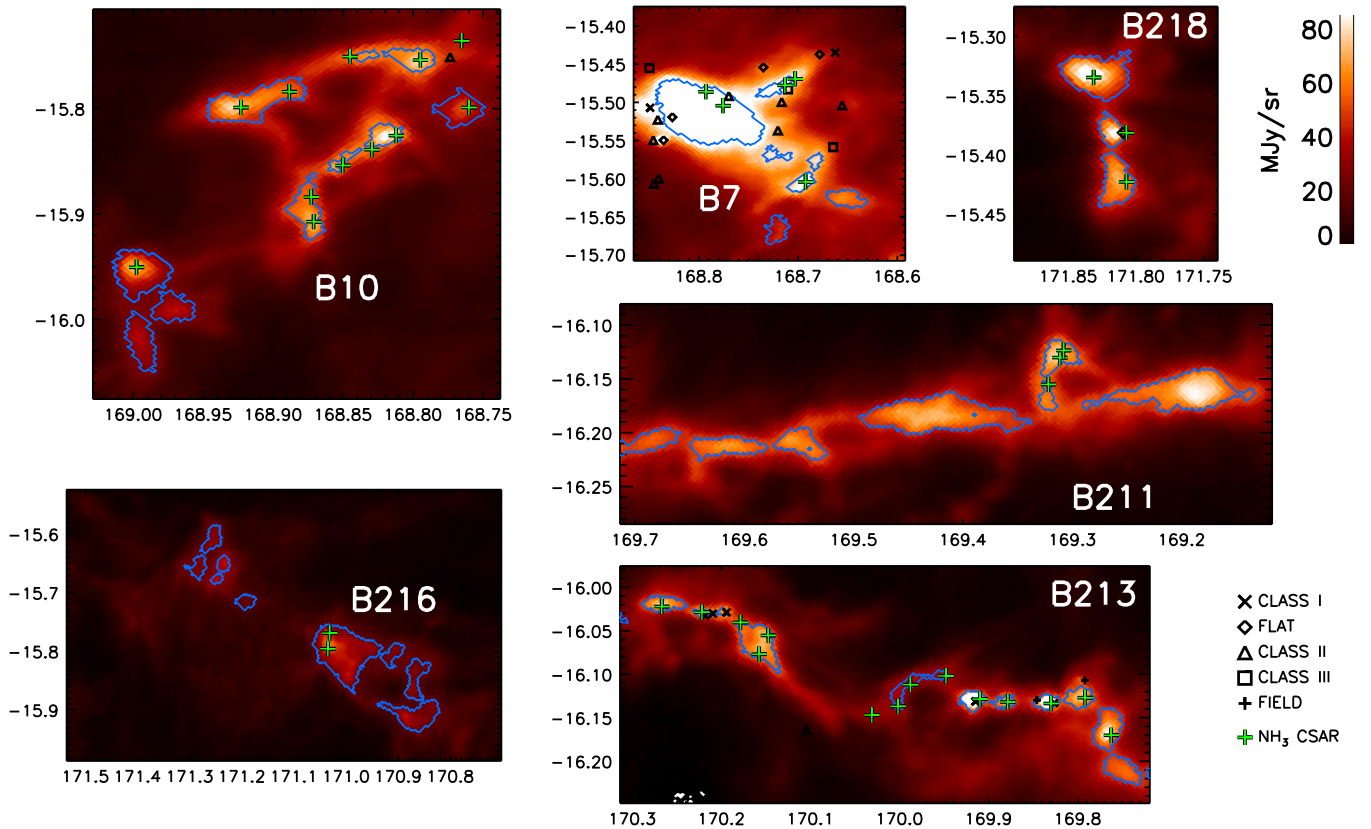


Figure 11. Location of dust and NH_3 leaves. Blue contours are boundaries of dust leaves, and green–black crosses are the peak positions of NH_3 leaves.

with $\rho \sim r^{-1}$ is 50% larger than the corresponding virial mass of a homoeoidal ellipsoid with $\rho \sim r^{-2}$. For $\rho \sim r^{-1}$, there are only two gravitationally bound leaves, both of which are active leaves.

In order to assess the validity of the virial analysis, we must first carefully analyze the uncertainties. One uncertainty may come from a choice of $\bar{\sigma}_v$. In this study, we chose median values of σ_v within NH_3 leaves, but one may use a mean of σ_v or a mass-weighted mean of σ_v (mass-weighted mean is $\bar{\sigma}_v^2 = \int N_{\text{H}_2} \mu m_{\text{H}} \sigma_v^2 dA / \int N_{\text{H}_2} \mu m_{\text{H}} dA$) within an NH_3 leaf. We found that the mean values of σ_v are at most 10% larger (typically 5%) than the corresponding median values, which may result in at most 20% increase of corresponding virial mass. The mean values may be larger than the median values because σ_v tends to be lower at the center of an NH_3 leaf and considerably increases toward edges of the NH_3 leaf. Mass-weighted means, on the other hand, range from 95% to 105% of the corresponding median σ_v values. Thus, uncertainties originating from choices of $\bar{\sigma}_v$ do not strongly affect the conclusion of virial mass analysis since ratios of virial masses to observed masses are quite large with respect to these uncertainties.

The largest uncertainties in estimating the observed mass from $500 \mu\text{m}$ continuum data are mainly due to assuming $T_d = T_k$ and uncertainty in dust opacity κ . Comparing the dust temperature, which is estimated by spectral energy distribution fitting of 70, 160, 250, 350, and $500 \mu\text{m}$ dust continuums (Palmeirim et al. 2013) to the gas kinetic temperature deduced from NH_3 (1, 1) and (2, 2), we found that the dust temperature is typically 3–5 K higher than the gas kinetic temperature. If the dust temperature is 5 K higher than the gas kinetic temperature, the mass estimated from the dust temperature is 35% less than

the mass estimated with the $T_d = T_k$ assumption, and only four active NH_3 leaves are gravitationally bound.

Another uncertainty is from the dust-to-gas ratio. In this study, we use 0.01, which is a standard value assumed in a molecular cloud (e.g., Beckwith et al. 1990; Lombardi et al. 2006; Schmalzl et al. 2010; Kirk et al. 2013). However, detailed observations of interstellar dust grains in the diffuse ISM indicate that the dust-to-gas ratio is close to 0.0064 (Draine 2011 and reference therein). This increases observed mass of the leaves by about 55% from the current values. In this case, 20 out of 39 leaves are gravitationally bound, and 19 leaves are still gravitationally unbound.

Not knowing three-dimensional morphologies of leaves also brings uncertainty in estimating masses of leaves. We estimate the mass of a leaf by simply summing up the column mass of pixels that belongs to the leaf, which corresponds to a cylindrical morphology rather than a spheroidal morphology. This has been a conventional method to estimate the masses of dense structures since we do not know three-dimensional morphologies (e.g., Kirk et al. 2013). In order to check the uncertainty from assuming different morphologies in estimating the mass of a dense structure, we estimated the masses of leaves by summing up the column density of pixels within leaves after subtracting the average column density of local backgrounds/branches. We found that the masses of leaves are typically 20%–50% less than the original values if we subtract a local background from the leaves in estimating leaf mass and that only 2 out of 39 leaves are gravitationally bound.

The typical uncertainty in the dust opacity is a factor of a few (e.g., Shirley et al. 2011), and this results in quite a large

Table 1
Properties of NH₃ Sources

ID ^a	<i>b</i>	<i>l</i>	α J2000.0	δ J2000.0	Peak NH ₃ ^b (K km s ⁻¹)	Peak Dust ^c (MJy sr ⁻¹)	NH ₂ ^d (10 ²² cm ⁻²)	Embedded ^e YSOs	Area (10 ⁻² pc ²)
1	+168:42:22.8	-15:28:12	4:18:33.0	+28:27:58	7.07 ± 0.09	85.9	1.69 ^{0.11} _{-0.14}	N	0.046
1.5	+168:42:22.8	-15:28:12	4:18:33.0	+28:27:58	7.07 ± 0.09	85.9	1.69 ^{0.11} _{-0.14}	...	1.206
2	+168:42:59.9	-15:28:42	4:18:33.1	+28:27:11	6.67 ± 0.08	91.2	2.28 ^{0.15} _{-0.17}	N	0.012
3	+168:46:43.4	-15:30:18	4:18:39.1	+28:23:29	3.60 ± 0.08	176.6	4.03 ^{0.53} _{-0.43}	N	0.526
4	+168:47:46.1	-15:29:12	4:18:45.9	+28:23:30	1.02 ± 0.13	112.4	4.30 ^{2.51} _{-2.03}	N	0.046
5	+168:41:41.8	-15:36:18	4:18:04.2	+28:22:52	2.82 ± 0.09	94.9	2.48 ^{0.73} _{-0.29}	N	0.473
6	+168:47:45.6	-15:45:18	4:17:52.8	+28:12:26	3.07 ± 0.06	75.0	2.33 ^{0.55} _{-0.27}	N	0.194
6.5	+168:50:46.4	-15:45:06	4:18:02.6	+28:10:28	3.83 ± 0.06	58.5	1.43 ^{0.14} _{-0.16}	...	0.507
7	+168:50:46.4	-15:45:06	4:18:02.6	+28:10:28	3.83 ± 0.06	58.5	1.43 ^{0.14} _{-0.16}	N	0.257
7.5	+168:55:25.8	-15:48:00	4:18:07.0	+28:05:13	6.41 ± 0.06	70.5	2.64 ^{0.17} _{-0.27}	...	2.881
8	+168:53:21.5	-15:47:06	4:18:03.7	+28:07:17	5.04 ± 0.05	57.3	1.60 ^{0.10} _{-0.12}	N	0.071
8.5	+168:55:25.8	-15:48:00	4:18:07.0	+28:05:13	6.41 ± 0.06	70.5	2.64 ^{0.17} _{-0.27}	...	0.768
9	+168:55:25.8	-15:48:00	4:18:07.0	+28:05:13	6.41 ± 0.06	70.5	2.64 ^{0.17} _{-0.27}	N	0.192
10	+168:45:39.7	-15:48:00	4:17:37.6	+28:12:02	1.57 ± 0.10	52.5	1.57 ^{0.80} _{-0.41}	N	0.348
11	+168:46:00.1	-15:44:12	4:17:51.2	+28:14:25	0.82 ± 0.10	39.2	1.27 ^{0.92} _{-0.52}	N	0.050
12	+168:48:46.1	-15:49:36	4:17:41.7	+28:08:46	5.34 ± 0.06	79.0	2.53 ^{0.19} _{-0.07}	N	0.226
12.5	+168:48:46.1	-15:49:36	4:17:41.7	+28:08:46	5.34 ± 0.06	79.0	2.53 ^{0.19} _{-0.07}	...	0.357
13	+168:49:48.1	-15:50:24	4:17:42.2	+28:07:29	2.08 ± 0.07	58.6	1.02 ^{0.12} _{-0.21}	N	0.017
13.25	+168:48:46.1	-15:49:36	4:17:41.7	+28:08:46	5.34 ± 0.06	79.0	2.53 ^{0.19} _{-0.07}	...	1.076
14	+168:51:02.6	-15:51:18	4:17:43.0	+28:06:00	2.19 ± 0.08	59.4	1.51 ^{0.52} _{-0.25}	N	0.070
15	+168:52:22.9	-15:53:06	4:17:41.1	+28:03:50	2.87 ± 0.06	57.4	2.14 ^{0.28} _{-0.31}	N	0.050
15.5	+168:52:16.1	-15:54:30	4:17:36.1	+28:02:57	3.43 ± 0.07	71.7	1.92 ^{0.37} _{-0.20}	...	0.884
16	+168:52:16.1	-15:54:30	4:17:36.1	+28:02:57	3.43 ± 0.07	71.7	1.92 ^{0.37} _{-0.20}	N	0.146
17	+168:59:50.6	-15:57:06	4:17:50.3	+27:55:52	6.17 ± 0.07	70.8	2.25 ^{0.23} _{-0.18}	N	0.655
18	+169:18:24.7	-16:07:30	4:18:11.7	+27:35:46	2.90 ± 0.07	74.7	1.87 ^{0.36} _{-0.17}	N	0.030
18.5	+169:18:37.1	-16:07:54	4:18:11.0	+27:35:21	2.86 ± 0.07	73.4	2.21 ^{0.28} _{-0.28}	...	0.242
19	+169:18:37.1	-16:07:54	4:18:11.0	+27:35:21	2.86 ± 0.07	73.4	2.21 ^{0.28} _{-0.28}	N	0.015
19.25	+169:18:37.1	-16:07:54	4:18:11.0	+27:35:21	2.86 ± 0.07	73.4	2.21 ^{0.28} _{-0.28}	...	1.161
20	+169:19:14.2	-16:09:24	4:18:07.9	+27:33:53	2.04 ± 0.09	55.9	1.74 ^{0.32} _{-0.50}	N	0.078
21	+169:45:40.7	-16:10:18	4:19:23.3	+27:14:46	2.30 ± 0.11	82.6	1.52 ^{0.50} _{-0.51}	N	0.481
21.925	+169:49:44.6	-16:08:06	4:19:42.5	+27:13:25	9.49 ± 0.07	120.0	2.05 ^{0.08} _{-0.07}	...	2.979
22	+169:47:27.3	-16:07:42	4:19:37.1	+27:15:18	7.40 ± 0.08	69.6	1.71 ^{0.15} _{-0.10}	N	0.610
22.85	+169:49:44.6	-16:08:06	4:19:42.5	+27:13:25	9.49 ± 0.07	120.0	2.05 ^{0.08} _{-0.07}	...	2.363
23	+169:49:44.6	-16:08:06	4:19:42.5	+27:13:25	9.49 ± 0.07	120.0	2.05 ^{0.08} _{-0.07}	Y	0.279
23.75	+169:49:44.6	-16:08:06	4:19:42.5	+27:13:25	9.49 ± 0.07	120.0	2.05 ^{0.08} _{-0.07}	...	1.687
24	+169:52:39.5	-16:08:00	4:19:51.5	+27:11:26	10.45 ± 0.06	67.0	2.24 ^{0.09} _{-0.08}	N	0.231
24.5	+169:52:39.5	-16:08:00	4:19:51.5	+27:11:26	10.45 ± 0.06	67.0	2.24 ^{0.09} _{-0.08}	...	0.524
25	+169:54:32.0	-16:07:48	4:19:57.6	+27:10:15	7.36 ± 0.08	74.7	1.57 ^{0.07} _{-0.08}	Y	0.075
26	+169:56:49.5	-16:06:12	4:20:09.7	+27:09:44	1.40 ± 0.08	35.4	0.83 ^{0.11} _{-0.22}	N	0.118
27	+169:59:13.1	-16:06:48	4:20:14.7	+27:07:39	1.11 ± 0.09	34.1	0.69 ^{0.14} _{-0.07}	N	0.045
27.75	+170:00:03.0	-16:08:18	4:20:12.2	+27:06:02	1.88 ± 0.10	33.6	0.60 ^{0.18} _{-0.11}	...	0.605
28	+170:00:03.0	-16:08:18	4:20:12.2	+27:06:02	1.88 ± 0.10	33.6	0.60 ^{0.18} _{-0.11}	N	0.133
28.5	+170:00:03.0	-16:08:18	4:20:12.2	+27:06:02	1.88 ± 0.10	33.6	0.60 ^{0.18} _{-0.11}	...	0.559
29	+170:01:49.1	-16:08:54	4:20:15.5	+27:04:23	1.90 ± 0.09	29.6	0.74 ^{0.11} _{-0.18}	N	0.124
30	+170:10:40.2	-16:02:30	4:21:02.5	+27:02:30	3.81 ± 0.09	53.9	1.29 ^{0.14} _{-0.21}	N	0.363
30.5	+170:09:25.2	-16:04:42	4:20:51.6	+27:01:54	2.23 ± 0.08	59.6	1.29 ^{0.51} _{-0.17}	...	0.927
31	+170:09:25.2	-16:04:42	4:20:51.6	+27:01:54	2.23 ± 0.08	59.6	1.29 ^{0.51} _{-0.17}	N	0.138
32	+170:08:47.8	-16:03:24	4:20:54.1	+27:03:13	1.54 ± 0.07	70.2	1.87 ^{0.61} _{-0.37}	N	0.051
33	+170:15:58.6	-16:01:24	4:21:21.7	+26:59:31	9.36 ± 0.09	73.2	2.38 ^{0.21} _{-0.10}	N	0.838
34	+170:13:16.3	-16:01:48	4:21:12.5	+27:01:09	1.41 ± 0.10	71.9	0.71 ^{0.38} _{-0.11}	Y	0.041
35	+171:02:00.7	-15:47:48	4:24:20.6	+26:36:02	2.22 ± 0.15	54.9	1.73 ^{1.59} _{-0.36}	N	0.091
36	+171:01:47.9	-15:46:12	4:24:25.3	+26:37:16	1.87 ± 0.12	44.3	1.43 ^{0.36} _{-0.21}	N	0.076
37	+171:48:05.3	-15:25:24	4:27:47.5	+26:17:58	9.33 ± 0.11	60.6	1.82 ^{0.15} _{-0.11}	N	0.639
38	+171:48:04.1	-15:22:54	4:27:55.8	+26:19:38	3.62 ± 0.11	48.6	1.96 ^{0.43} _{-0.42}	Y	0.090
39	+171:49:30.0	-15:20:06	4:28:09.2	+26:20:28	9.20 ± 0.12	89.6	2.64 ^{0.14} _{-0.23}	N	0.809

^a IDs with decimal points are NH₃ branches.

^b Total integrated intensity of NH₃ (1, 1) emission.

^c 500 μ m dust continuum of *Herschel Space Observatory*. Typical rms is 0.4 MJy/sr.

^d Statistical uncertainty of peak column density is only due to uncertainties of the 500 μ m dust continuum flux density and T_k . $T_d = T_k$ is assumed.

^e Branches are omitted and noted as “...”

Table 2
Physical Properties of NH₃ Sources

ID ^a	T_k^b (K)	σ_v^c (km s ⁻¹)	Mass from Dust (M_\odot)	Virial Mass ^d (M_\odot)	Mass from NH ₃ ^e (M_\odot)
1	10.24 ^{0.17} _{-0.42}	0.199 ^{0.005} _{-0.005}	0.18	0.45	0.36
1.5	9.92 ^{0.52} _{-0.86}	0.201 ^{0.011} _{-0.005}	4.56	2.21	3.91
2	9.66 ^{0.09} _{-0.08}	0.197 ^{0.005} _{-0.005}	0.06	0.19	0.09
3	10.25 ^{0.93} _{-0.84}	0.204 ^{0.014} _{-0.008}	4.38	1.45	1.03
4	8.49 ^{0.99} _{-0.99}	0.210 ^{0.011} _{-0.012}	0.31	0.34	0.05
5	9.65 ^{1.52} _{-1.34}	0.252 ^{0.018} _{-0.016}	1.74	1.93	0.71
6	9.47 ^{0.78} _{-0.50}	0.227 ^{0.005} _{-0.020}	0.77	1.15	0.50
6.5	9.49 ^{0.59} _{-0.52}	0.201 ^{0.028} _{-0.009}	1.85	1.61	1.39
7	9.48 ^{0.43} _{-0.55}	0.194 ^{0.006} _{-0.005}	0.88	0.98	0.77
7.5	9.29 ^{0.78} _{-0.77}	0.202 ^{0.022} _{-0.009}	9.52	3.89	7.58
8	9.26 ^{0.16} _{-0.21}	0.196 ^{0.002} _{-0.003}	0.26	0.47	0.37
8.5	8.99 ^{0.52} _{-0.54}	0.198 ^{0.008} _{-0.005}	3.20	1.88	3.64
9	8.61 ^{0.30} _{-0.24}	0.197 ^{0.007} _{-0.005}	1.02	0.89	1.35
10	9.63 ^{2.12} _{-2.11}	0.224 ^{0.029} _{-0.012}	0.41	0.61	0.25
11	10.00 ^{0.39} _{-0.54}	0.203 ^{0.012} _{-0.011}	0.10	0.58	0.12
12	9.29 ^{0.67} _{-0.38}	0.213 ^{0.026} _{-0.017}	0.95	0.98	0.98
12.5	9.49 ^{0.94} _{-0.57}	0.220 ^{0.024} _{-0.021}	1.32	1.47	1.24
13	10.90 ^{1.06} _{-1.41}	0.236 ^{0.009} _{-0.013}	0.04	0.31	0.03
13.25	9.68 ^{1.18} _{-0.75}	0.227 ^{0.036} _{-0.022}	2.79	2.67	2.12
14	9.68 ^{0.59} _{-0.37}	0.226 ^{0.010} _{-0.008}	0.23	0.61	0.13
15	8.84 ^{0.39} _{-0.50}	0.217 ^{0.035} _{-0.014}	0.21	0.50	0.15
15.5	9.50 ^{0.64} _{-1.06}	0.206 ^{0.039} _{-0.012}	2.73	2.02	1.88
16	9.66 ^{0.27} _{-0.30}	0.196 ^{0.007} _{-0.003}	0.53	0.75	0.46
17	9.31 ^{0.59} _{-0.54}	0.196 ^{0.007} _{-0.005}	1.62	1.22	1.97
18	9.75 ^{0.43} _{-0.40}	0.222 ^{0.006} _{-0.009}	0.12	0.40	0.09
18.5	9.48 ^{0.54} _{-0.47}	0.220 ^{0.006} _{-0.010}	0.99	1.09	0.66
19	9.11 ^{0.71} _{-0.47}	0.214 ^{0.006} _{-0.006}	0.07	0.22	0.05
19.25	9.45 ^{0.99} _{-1.24}	0.217 ^{0.013} _{-0.010}	4.06	2.15	2.09
20	9.50 ^{1.22} _{-1.29}	0.217 ^{0.012} _{-0.007}	0.30	0.66	0.15
21	9.17 ^{1.36} _{-1.30}	0.201 ^{0.016} _{-0.016}	1.92	1.30	0.70
21.925	9.80 ^{0.87} _{-0.82}	0.203 ^{0.017} _{-0.012}	8.97	3.82	9.74
22	9.74 ^{0.58} _{-0.75}	0.203 ^{0.014} _{-0.011}	1.89	1.39	1.73
22.85	9.85 ^{0.82} _{-0.77}	0.203 ^{0.017} _{-0.012}	6.84	3.55	8.97
23	10.39 ^{0.51} _{-0.54}	0.210 ^{0.005} _{-0.011}	0.95	1.11	1.45
23.75	9.91 ^{0.94} _{-0.80}	0.203 ^{0.018} _{-0.012}	4.77	3.04	7.16
24	9.08 ^{0.15} _{-0.16}	0.191 ^{0.003} _{-0.003}	0.88	0.77	2.14
24.5	9.20 ^{1.05} _{-0.23}	0.192 ^{0.013} _{-0.003}	1.81	1.38	3.63
25	10.26 ^{0.48} _{-0.78}	0.204 ^{0.009} _{-0.009}	0.27	0.53	0.45
26	9.75 ^{1.31} _{-1.22}	0.202 ^{0.012} _{-0.012}	0.24	0.77	0.16
27	10.27 ^{1.01} _{-1.09}	0.203 ^{0.004} _{-0.011}	0.08	0.45	0.05
27.75	10.63 ^{0.99} _{-1.31}	0.204 ^{0.010} _{-0.014}	0.85	1.65	0.73
28	11.32 ^{0.95} _{-0.58}	0.213 ^{0.010} _{-0.005}	0.15	0.70	0.15
28.5	10.64 ^{0.99} _{-1.32}	0.205 ^{0.010} _{-0.014}	0.77	1.66	0.68
29	10.03 ^{0.67} _{-0.97}	0.195 ^{0.008} _{-0.007}	0.19	0.68	0.18
30	9.92 ^{1.08} _{-1.18}	0.212 ^{0.008} _{-0.005}	1.08	1.39	0.99
30.5	9.77 ^{1.14} _{-1.09}	0.220 ^{0.022} _{-0.012}	3.09	2.56	2.03
31	9.55 ^{0.49} _{-0.52}	0.231 ^{0.014} _{-0.011}	0.50	0.93	0.29
32	8.95 ^{1.96} _{-1.32}	0.207 ^{0.018} _{-0.019}	0.26	0.40	0.08
33	9.54 ^{0.93} _{-0.58}	0.206 ^{0.013} _{-0.011}	2.49	1.87	4.61
34	13.39 ^{0.57} _{-0.91}	0.270 ^{0.027} _{-0.015}	0.07	0.69	0.04
35	9.22 ^{0.80} _{-1.11}	0.208 ^{0.007} _{-0.005}	0.36	0.60	0.17
36	9.81 ^{1.62} _{-0.92}	0.205 ^{0.012} _{-0.012}	0.19	0.57	0.11
37	9.83 ^{0.50} _{-0.62}	0.209 ^{0.018} _{-0.008}	1.82	1.61	2.97
38	9.55 ^{0.62} _{-1.48}	0.212 ^{0.006} _{-0.007}	0.31	0.62	0.26
39	9.55 ^{0.68} _{-0.56}	0.199 ^{0.014} _{-0.006}	2.89	1.51	3.22

^a IDs with decimal points are branches in dendrograms.

^b Median T_k of the NH₃ leaves and branches. Subscripts and superscripts are 15.9% and 84.1% of the T_k distribution within NH₃ leaves and branches.

^c Median σ_v of the NH₃ leaves and branches with the mean molecular weight $\mu = 2.33$. Subscripts and superscripts are 15.9% and 84.1% of the σ_v distribution within NH₃ leaves and branches.

^d The NH₃ leaves and branches are assumed to be homoeoidal ellipsoids for the virial mass calculation.

^e The fractional abundance of NH₃ is assumed to be 1.5×10^{-9} (typical fractional abundance ranges from 10^{-9} to 10^7 ; e.g., Jijina et al. 1999; Tafalla et al. 2004).

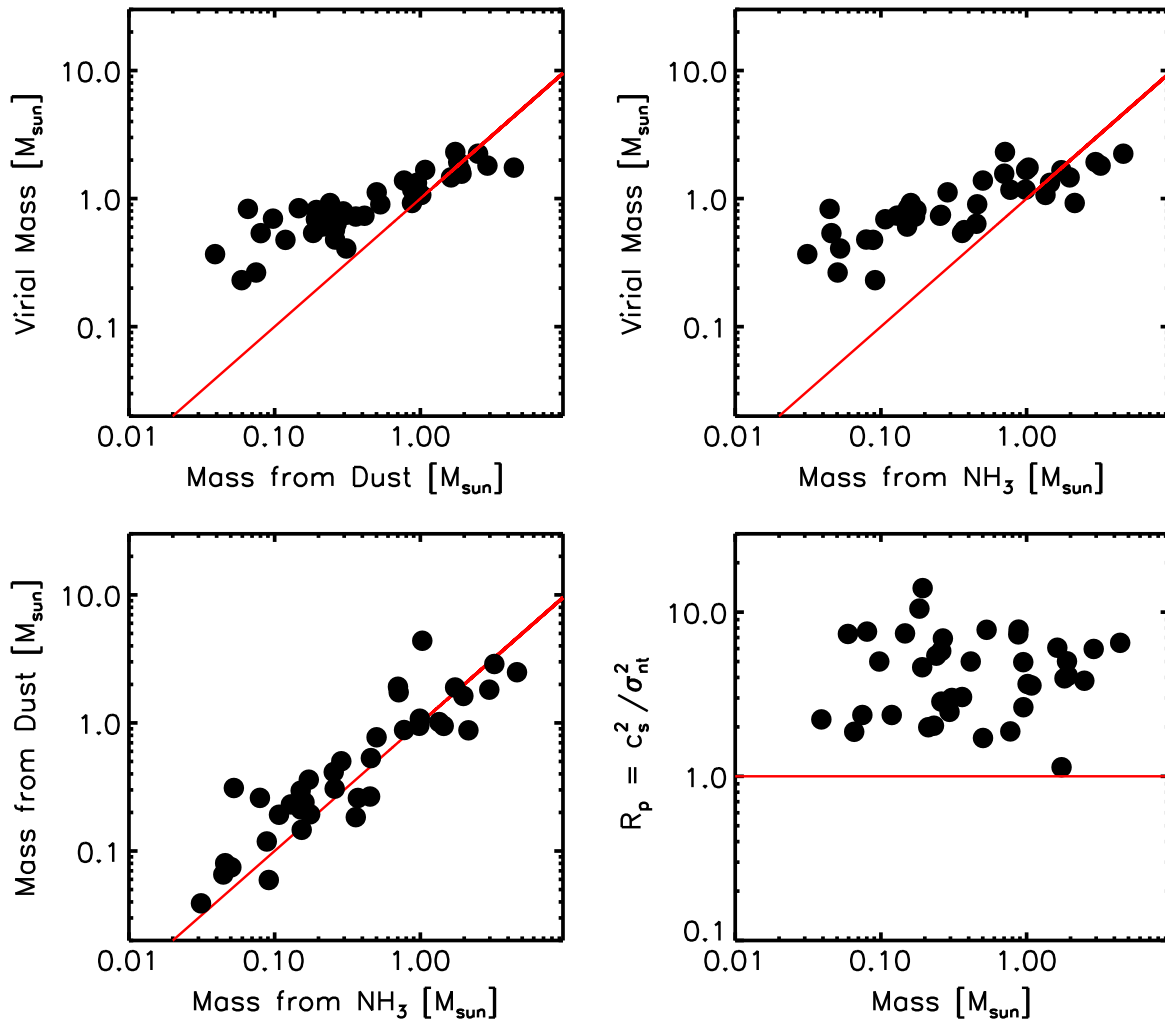


Figure 12. Relations between masses (the first, second, and third panels). The red line denotes $x = y$. Ratio of thermal support to nonthermal support (the fourth panel). The red line denotes $R_p = 1$.

uncertainty in estimating mass since $M \propto 1/\kappa$. We use OH5 dust opacity, but this is not a direct measurement of dust opacity from molecular clouds but a simulated dust opacity based on a coagulated dust model. Shirley et al. (2011) made a direct measurement of the dust opacity at 450 and 850 μm in the outer envelope of a low-mass Class 0 core, B335, through a comparison between infrared extinction and submillimeter dust continuum. We compared the dust opacity of Shirley et al. (2011) to OH5 dust opacity at 450 μm and applied the same uncertainty range of dust opacity to OH5 dust opacity at 500 μm ($\kappa = 5.04_{-1.10}^{3.91} \text{ cm}^2 \text{ g}^{-1}$). The uncertainty in the observed mass ranges from 57% lower to 28% higher with respect to the observed mass given in Table 2. If we take the lower limit of uncertainty in the observed mass, two active NH_3 leaves are gravitationally bound, while if we take the upper limit of uncertainty in the observed mass, 15 out of 39 are gravitationally bound.

Thus, uncertainties in σ_v , T_d , m_d/m_g , geometry, backgrounds, and dust opacity are unlikely to change our conclusion that most leaves are gravitationally unbound. This result suggests that a dense core may first form as a gravitationally unbound structure, evolve to a gravitationally bound core, and then undergo collapse to form a protostar. Indeed, 10 out of 15

bound leaves in the extreme opacity limit are in more evolved regions.

4.2. Pressure Confinement

External pressure may be a source to confine gravitationally unbound structure. Dib et al. (2007) carried out a detailed virial analysis for dense cores forming in a turbulent environment using a numerical method. They showed that the work done by the external pressure in the virial theorem is comparable to the other terms such as internal energy and gravitational energy (Dib et al. 2007). Since most of the NH_3 leaves are not gravitationally bound in our simple virial analysis, we checked whether or not work done by the external pressure is comparable to the internal and gravitational energy. The work done by external pressure is estimated as follows:

$$\int p\vec{x} \cdot \hat{n}dS = \frac{4}{3\sqrt{1-e^2}} \min\{N_{\text{H}_2}\mu m_{\text{H}}\sigma_v^2\}_C A, \quad (7)$$

where A is the projected area of the NH_3 leaf. $N_{\text{H}_2}\mu m_{\text{H}}\sigma_v^2$ is the integration of pressure along the line of sight, where N_{H_2} is column density estimated from 500 μm and σ_v is velocity dispersion of molecular gas with $\mu = 2.33$. We chose the

Table 3
Geometrical Properties of NH₃ Sources

ID ^a	Short Axis (10 ⁻² pc)	Long Axis (10 ⁻² pc)	Axis Ratio	Phase Angle ^b (Degree)
1	0.65	2.27	0.287	38.9
1.5	3.79	10.1	0.376	43.9
2	0.46	0.8	0.581	44.8
3	2.8	5.98	0.469	152.5
4	0.91	1.61	0.568	140.1
5	2.75	5.47	0.505	34.4
6	1.47	4.21	0.348	151.4
6.5	1.67	9.69	0.172	1.3
7	1.69	4.85	0.348	18.1
7.5	3.37	27.2	0.124	24.6
8	1.14	1.99	0.571	20.1
8.5	2.21	11.1	0.200	23.7
9	1.34	4.57	0.294	16.2
10	3.00	3.69	0.813	170.3
11	0.99	1.6	0.621	4.3
12	2.09	3.44	0.606	25.4
12.5	2.01	5.64	0.357	37.8
13	0.64	8.27	0.775	179.6
13.25	3.03	11.3	0.268	38.9
14	1.16	1.92	0.606	36.9
15	0.87	1.82	0.476	38.0
15.5	2.86	9.85	0.291	173.8
16	1.27	3.67	0.345	143.9
17	4.40	4.74	0.935	173.6
18	0.72	1.33	0.541	160.2
18.5	2.12	3.64	0.581	43.4
19	0.69	0.69	1.00	30.0
19.25	5.30	6.97	0.763	23.4
20	0.97	2.56	0.379	165.5
21	2.67	5.73	0.467	13.1
21.925	4.64	20.4	0.228	174.4
22	3.81	5.1	0.752	171.7
22.85	3.57	21.1	0.170	178.9
23	2.11	4.19	0.505	177.0
23.75	2.74	19.6	0.140	176.8
24	2.25	3.26	0.694	20.45
24.5	2.27	7.36	0.309	177.5
25	1.13	2.09	0.543	156.7
26	0.87	4.31	0.202	4.5
27	0.68	2.09	0.328	41.2
27.75	2.6	7.41	0.352	20.7
28	1.82	2.32	0.787	37.8
28.5	2.16	8.22	0.263	16.4
29	1.19	3.32	0.361	4.2
30	1.94	5.96	0.326	142.3
30.5	2.47	12	0.207	147.9
31	1.52	2.88	0.529	137.7
32	1.19	1.38	0.870	138.8
33	3.58	7.46	0.481	7.0
34	0.84	1.57	0.538	159.2
35	1.29	2.26	0.571	27.3
36	1.01	2.41	0.418	28.3
37	3.4	5.98	0.571	2.4
38	1.28	2.23	0.571	17.5
39	4.45	5.79	0.769	146.8

^a IDs with decimal points are branches in dendrograms.

^b The phase angle of NH₃ leaves with respect to the Galactic longitude. For the phase angle with respect to the equatorial plane, 62:6 should be added.

minimum value at the circumference of the NH₃ leaf, $\min\{N_{\text{H}_2}\mu m_{\text{H}}\sigma_v^2\}_C$, because it corresponds to the minimum external pressure exerted on an NH₃ leaf. The coefficient of

$4/(3\sqrt{1-e^2})$ is for spheroid geometry when one of the principal axes is aligned with the observer's line of sight. We estimate the work done by external pressure using $\min\{N_{\text{H}_2}\mu m_{\text{H}}\sigma_v^2\}_C$ because the external pressure is not well known. The estimated work done by external pressure ranges from 5×10^{40} to 1×10^{42} erg. In a majority of leaves, gravitational energies are larger than the corresponding work done by external pressure except for 12 leaves (the second panel of Figure 13), which suggests that those 12 leaves are pressure confined. Active leaves tend to have a lower average ratio than that of inactive leaves, which indicates that the gravity becomes more important than external pressure as a dense core evolves. Moreover, in 9 out of 12 leaves, the ratios of the work done by external pressure to the gravitational energy are larger than that of the critical Bonnor–Ebert sphere (black dashed vertical line; Bonnor 1956; Ebert 1955, 1957). Thus, these results suggest that the youngest condensations are pressure confined.

A source of the external pressure may be investigated by comparing the internal pressure of the NH₃ leaves and the pressure of the surrounding media. The mean internal pressure of NH₃ leaves is $\langle p/k \rangle = 2 \times 10^6 \text{ K cm}^{-3}$, where p is roughly estimated as

$$p = \frac{M\bar{\sigma}_v^2}{V}, \quad (8)$$

where V is the leaf volume and $\bar{\sigma}_v$ is the median value of σ_v within an NH₃ leaf. We assumed that the leaf volume is the same as the volume of a prolate spheroid having the observed axis ratio (see Section 3.2.3 for shapes of NH₃ leaves). If we assume that the density structure of a leaf resembles the critical Bonnor–Ebert sphere, the surface pressure is about 40% of the mean internal pressure, $\langle p_{\text{surface}}/k \rangle = 8 \times 10^5 \text{ K cm}^{-3}$. This is significantly higher than the gas pressure of the interstellar medium ($\langle p_{\text{ISM}}/k \rangle \approx 10^4 \text{ K cm}^{-3}$; Bertoldi & McKee 1992; Draine 2011) and still a bit higher than the interstellar turbulence ram pressure, $\langle p_{\text{ram}}/k \rangle \approx 5 \times 10^4 \text{ K cm}^{-3}$ (Lada et al. 2008).

Another source of external pressure may be the weight of the filament material outside of NH₃ leaves since the self-gravity of the filaments produces a gravitational potential well and the weight of filament material outside of NH₃ leaves exerts a confining pressure on the NH₃ leaves. We estimated the pressure due to the weight of the filament material outside of the NH₃ leaves as (Bertoldi & McKee 1992; Lada et al. 2008)

$$p_{\text{filaments}} = \frac{3\pi}{20} a G \Sigma^2, \quad (9)$$

where Σ is the mean mass surface density of material outside of leaves and a is a correction factor for the non-spherical geometry of the filaments. The values of a range from 1.0 to 3.3 depending on the eccentricities and density structures of the filaments (for $a = 3.3$, we took the maximum axis ratio of the NH₃ branches, $\max(Z/R) \sim 10$, and a density structure of $\rho \sim r^{-2}$). The mean of the pressure of the filaments due to their weight is $\langle p_{\text{filament}}/k \rangle = 6 \times 10^5 \text{ K cm}^{-3}$, which is a bit smaller than the surface pressure estimated from Equation (8)

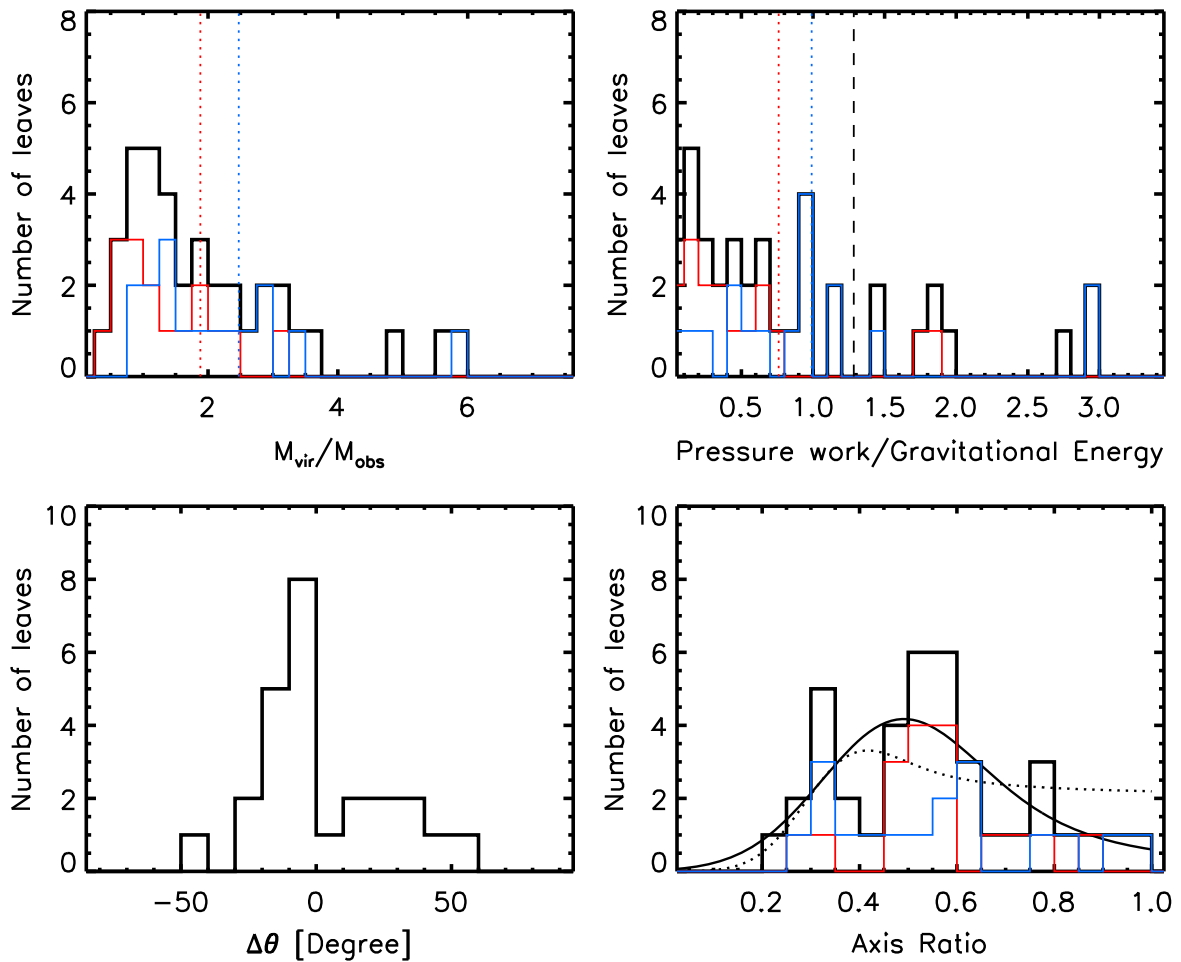


Figure 13. Distribution of properties of the NH_3 leaves. Red histograms denote active leaves, and blue histograms are inactive leaves. The first panel is the ratio of the virial mass to the observed mass. The red and blue vertical lines are the mean ratios of active and inactive leaves, respectively. The second panel is the ratio of the work done by pressure to the gravitational energy at the surface of NH_3 leaves. The red and blue vertical lines are the mean ratios of active and inactive leaves, respectively. The black dashed vertical line is the energy ratio of the critical Bonnor–Ebert sphere. The third panel is the angle difference of the NH_3 leaves to their branches. The fourth panel is the axis ratio of the NH_3 leaves deduced from the principal axis analysis. The solid and dashed lines are the best-fit probability density of apparent axis ratio of prolate and oblate spheroids with a uniform orientation angle distribution within $[-80^\circ, 80^\circ]$, respectively.

but within a factor of 2. This suggests that the weight of the filaments is one of the main sources that confines gravitationally unbound leaves.

Ram pressure due to the inflow of materials onto the filaments and dense cores from the molecular cloud may be another source of confining dense structures. Theoretical studies demonstrated that ram pressure due to mass accretion to dense structures may provide considerable confining pressure (Heitsch 2013a, 2013b) if a converging flow or an inflow is relatively isotropic (a non-isotropic converging flow may disrupt a dense structure; Did et al. 2007). ^{12}CO and ^{13}CO observations of the L1495-B218 filaments show that there is a difference of 2 km s^{-1} in the LSR velocities from the northeast to the southwest of B211 (Goldsmith et al. 2008; Palmeirim et al. 2013). This is similar to an infall velocity predicted in a similarity solution of gravitational infall onto a cylinder (Kawachi & Hanawa 1998). If we accept that the difference in the LSR velocity is due to relatively isotropic inflow of materials from the molecular cloud to the filaments, the ram pressure due to an inflow motion is

$$P_{\text{accretion}} = \rho_p(R)\delta V^2, \quad (10)$$

where ρ_p is the density of the best-fit Plummer model to the filament (Palmeirim et al. 2013) and R is the outer radius of the filament, which is 0.4 pc for the B211–B213 regions. δV is the difference in the LSR velocity across the B211 and B213 regions, which is about 2 km s^{-1} . The ram pressure due to the accretion of materials from the molecular cloud to filaments is $\langle p_{\text{filament}}/k \rangle \simeq 4.5 \times 10^5 \text{ K cm}^{-3}$, which is smaller than the surface pressure estimated from Equation (8) but still within a factor of 2. Since there is projection effect in measuring the true inflow velocity, this may be a lower limit of ram pressure due to an inflow motion. Thus, ram pressure due to inflow of materials from the molecular cloud to the filaments may also be one of the main sources of pressure that confine gravitationally unbound leaves.

4.3. Aligned Prolate Dense Structures

The formation of a filament or a dense core through the gravoturbulence fragmentation scenario predicts that a dense structure may not be strongly aligned with magnetic fields (Nakamura & Li 2008) unless the magnetic field pressure is

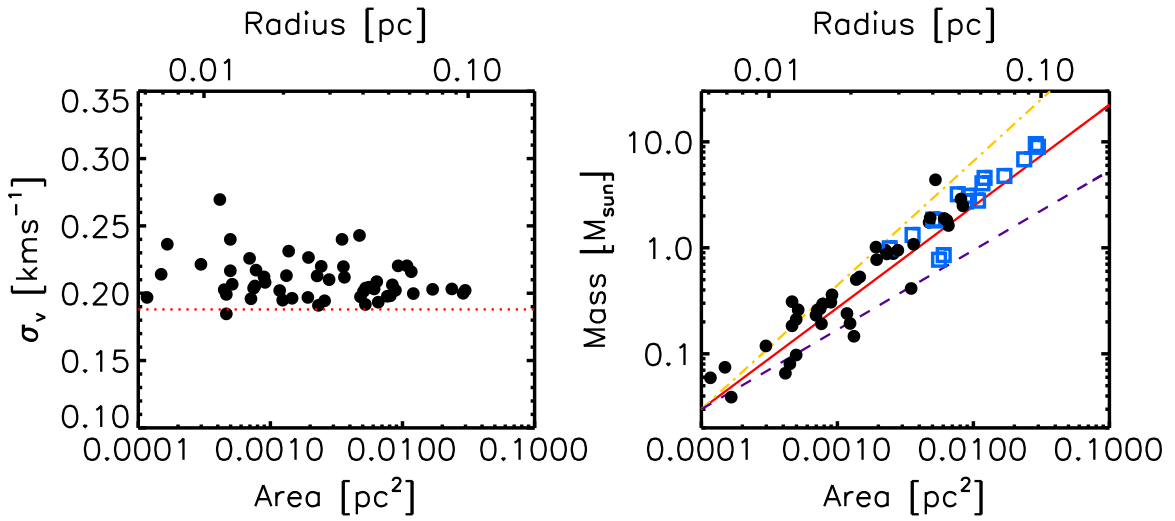


Figure 14. Relations between physical properties of NH_3 sources. The left panel shows the relation of the velocity dispersion ($\mu = 2.33$) and the size of the NH_3 leaves. The red dotted line denotes the thermal velocity dispersion when $T_k = 10$ and $\mu = 2.33$. The right panel is the mass–size relation of the NH_3 sources. Black filled circles are the NH_3 leaves, and blue boxes are the NH_3 branches. The red solid line is our best fit of $M \sim r^{1.9}$ to the NH_3 sources. The purple dashed line is $M \sim r^{1.5}$ from Kauffmann et al. (2010), and the orange dot-dashed line is $M \sim r^{2.35}$ from Kirk et al. (2013).

considerably stronger than the ram pressure of turbulence. On the other hand, formation through a quasi-static gravitational contraction may result in a strong alignment of the dense core with magnetic fields because contraction occurs more efficiently along magnetic field lines. Although magnetic field directions are not measured within the NH_3 sources, magnetic field directions on filament scales (a few 0.1 pc) have been measured through dust polarization in optical and infrared wavelengths along the L1495-B218 filaments (Chapman et al. 2011 and references therein). In B7 and B10 the magnetic fields are relatively parallel to the long axes of a filament. From B213 to B216 the magnetic fields are perpendicular to the long axes of filaments. Dust polarization in B218 is not measured. Since we do not know the magnetic field directions within dense cores and magnetic field directions are aligned in only some regions, it is difficult to ascertain the role of magnetic field in aligning dense cores.

In the gravoturbulence fragmentation scenario, a dense core forms as an oblate spheroid and quickly proceeds to a prolate spheroid or triaxial shape (e.g., Gong & Ostriker 2011; Kainulainen et al. 2014). The ratio of oblate dense cores to prolate dense cores depends on the Mach number of turbulence and the evolution time. A system with either a higher Mach number or a younger age shows a higher proportion of oblate dense cores. Since the NH_3 leaves are likely to be prolate (see Section 3.2.3), the L1495-B218 filaments may have been formed in a low Mach number turbulence ($M \leq 2$; Gong & Ostriker 2011) if the filaments are formed through the gravoturbulence fragmentation scenario. The velocity dispersions of filaments in the Taurus estimated from ^{13}CO observations are indeed low Mach number dispersions that range from 0.15 to 0.65 km s^{-1} (Panopoulou et al. 2014), corresponding to Mach numbers of 0.65–3.2, if we take the kinetic temperature of 15 K (Goldsmith et al. 2008). Alternatively, magnetic fields may also make a dense core to have a non-spherical shape because a dense core tends to contract along the magnetic field lines whereas a direction perpendicular to the field is supported by magnetic pressure. If magnetic pressure is the main force making a dense core’s non-spherical

shape, the dominant shape is an oblate spheroid (Lizano & Shu 1989). Since most of the NH_3 leaves are likely prolate spheroids, magnetic pressure does not seem to be the main cause of shaping a dense core into an elongated morphology, but gravoturbulence fragmentation may have played important roles in shaping the NH_3 leaves.

4.4. Comparing Size, Mass, and Velocity Dispersion

Larson proposed that there is an empirical relation between line width and size of a structure in a cloud scale (Larson 1981). To see whether there is such a relation in a sub-filament scale, we compare the mean velocity dispersion of NH_3 sources with the NH_3 source size in Figure 14. The velocity dispersion is almost flat on a scale from 0.005 to 0.1 pc (the mean velocity dispersion of molecular gas with $\mu = 2.33$ is 0.204 km s^{-1}), and it is close to the thermal velocity dispersion (0.188 km s^{-1} at 10 K and $\mu = 2.33$). This demonstrates that nonthermal motions are significantly dissipated on scales less than 0.2 pc in the L1495-B218 filaments, resulting in a breakdown in the cloud-scale supersonically turbulent scaling relation.

Observations toward molecular clouds show that molecular clouds are supersonic turbulent (e.g., Larson 1981; Scalo 1984; Miesch & Bally 1994; Padoan et al. 1999). In a smaller scale, observations toward molecular cloud cores show that dense cores are typically thermally supported and turbulence is significantly dissipated (e.g., Caselli & Myers 1994; Goodman et al. 1998; Jijina et al. 1999; Caselli et al. 2002). The dense NH_3 structures in this study also have the mean R_p of 4.9 (Section 3.2.2). On the other hand, the R_p values measured in $\text{C}^{18}\text{O } J = 1-0$ (Hacar et al. 2013) in the L1495-B218 filaments are close to unity, and the mean R_p value measured in $^{13}\text{CO } J = 1-0$ (Panopoulou et al. 2014) is 0.25. Since $\text{C}^{18}\text{O } J = 1-0$ traces less dense and larger structures than those seen by NH_3 (1, 1) and $^{13}\text{CO } J = 1-0$ traces even more extended regions than those traced by $\text{C}^{18}\text{O } J = 1-0$, the dependency of R_p values on the effective excitation density of the tracer suggests that supersonic turbulence cascades from a cloud scale to a core scale and is considerably dissipated on a scale smaller than

molecular filaments ($\lesssim 0.5$ pc) in the Taurus. A more detailed analysis of the velocity dispersion and associated kinematic structure will be presented in Paper II.

Mass–size relations are often pursued to investigate the correlation between density structures of sources and their size. The mass and size distributions of leaves and branches in the L1495-B218 filaments are shown in Figure 14. Mass and size show a strong correlation of $M \sim r^{1.9}$ (red solid line for NH_3 leaves and branches) (power-law indices of leaves only and that of branches only are close to 2 as well). This is close to a global relation for molecular clouds where the power-law index is 2 (Larson 1981), which indicates a nearly constant mean column density. Kirk et al. (2013) found a relation with a power-law index of 2.35 in the Taurus from *Herschel* dust continuum observations. Their analysis includes structures larger than 1 pc, whereas the largest structure in this study is only 0.1 pc. If we only take structures less than 0.1 pc from Kirk et al. (2013), the power-law index is shallower than 2.35 and close to 2. Kauffmann et al. (2010) studied mass–size relations resolved in several nearby molecular clouds. They also found that the power-law index is close to 2 in the Taurus when size is smaller than 0.1 pc, which agrees with our study.

A power-law index of 2 suggests that the dense structures in the L1495-B218 filaments are gravitationally unbound and have relatively constant column density while a gravitationally bound Bonner–Ebert-like core is expected to have a power-law index closer to 1 since $\rho \sim r^{-2}$ for the outer profile of a Bonnor–Ebert-like structure. Our virial analysis also shows that most of the NH_3 leaves in the L1495-B218 filaments are gravitationally unbound. If the NH_3 leaves are formed by colliding flows as shown in the gravoturbulence scenario (e.g., Gong & Ostriker 2011), density structures are more likely to be shallower than $\rho \sim r^{-2}$.

5. SUMMARY AND CONCLUSIONS

In this paper, we present extensive NH_3 (1, 1) and (2, 2) maps of the L1495-B218 filaments extending over 3° on the sky in the Taurus molecular cloud with unprecedented depth (average rms is 120 mK), angular resolution ($31''$), and velocity resolution (0.038 km s^{-1}). Using the maps, we study the physical properties of the L1495-B218 filaments by fitting 13,109 NH_3 (1, 1) and (2, 2) spectra using an adaptive mesh refinement (AMR) search of χ^2 space. The main results are as follow.

1. From our ammonia observations and a protostar catalog (Rebull et al. 2010), we confirm that B211 and B216 are young, less evolved regions, while B213 and B7 are actively star-forming, older, more evolved regions. The young regions have NH_3 column density around $1 \times 10^{13} \text{ cm}^{-2}$ and do not have any protostars. On the other hand, the more evolved, older regions have NH_3 column density up to $1 \times 10^{14} \text{ cm}^{-2}$ and have multiple protostars. NH_3 emission is mostly confined to a single velocity component, and the inversion levels are subthermally populated.
2. Gas kinetic temperatures in the L1495-B218 filaments deduced from NH_3 (1, 1) and (2, 2) lines reveal the filaments to be very cold (8–15 K with a median value equal to 9.5 K; 60% of spectra are in the range of 9.5 ± 1 K). We found that there is a small difference in gas kinetic temperature between the more evolved regions (B7, B213, and B218) and less evolved regions (B10, B211, and B216), with the more evolved regions having a higher median gas kinetic temperature (by at most 0.5 K) than the less evolved regions. Gas kinetic temperatures tend to decrease toward dense core centers at the level of a few kelvin. This may ultimately affect the stability and dynamics of dense cores and filaments.
3. The nonthermal velocity dispersion of NH_3 (1, 1) and (2, 2) lines in the L1495-B218 filaments ($\sim 0.08 \text{ km s}^{-1}$) is considerably narrower than those of $\text{C}^{18}\text{O } J = 1-0$ ($\sim 0.15 \text{ km s}^{-1}$; Hacar et al. 2013) and $^{13}\text{CO } J = 1-0$ ($\sim 1 \text{ km s}^{-1}$; Goldsmith et al. 2008) in the same region. This suggests that nonthermal motions in the regions traced by NH_3 have been significantly dissipated compared to those found in the more diffuse portions of the filaments. As a result, dense regions do not display a Larson’s size–line width relationship.
4. Results from the CSAR clump-finding algorithm found 39 NH_3 peaks (leaves) and 16 nested groups (branches), which is about twice the number that Hacar et al. (2013) found in N_2H^+ . This may be because NH_3 reveals lower-density cores than does N_2H^+ and our NH_3 observations have 67% better spatial resolution than the N_2H^+ data of Hacar et al. (2013). The NH_3 leaves and branches are identified on a scale from 0.01 to 0.1 pc and have masses ranging from 0.05 to $9.5 M_\odot$.
5. Masses of dense cores derived from dust continuum and NH_3 show a strong correlation in the L1495-B218 filaments. This suggests that NH_3 is an exceptional tracer for tracing dense cores in these filaments. A similar study across other molecular clouds will be interesting.
6. Most of the NH_3 leaves have observed masses smaller than the corresponding virial masses, which means they are likely to be gravitationally unbound structures. We found nine NH_3 leaves to be gravitationally bound and that seven out of nine leaves are either protostellar or within branches associated with star formation activity, while 30 NH_3 leaves are gravitationally unbound and only 10 out of 30 unbound leaves are either protostellar or within branches associated with star formation. We also found that 12 out of 30 gravitationally unbound leaves are pressure confined. This is a similar conclusion that Kainulainen et al. (2011) found in larger-scale clumps (>0.1 pc) in nearby clouds, while the dense structures in this study are from 0.005 to 0.1 pc.
7. Two sources may provide confining pressure to gravitationally unbound NH_3 leaves. The self-gravity of the filaments produces a gravitational potential well, and the weight of filament materials outside of NH_3 leaves may exert a confining pressure on the surface of NH_3 leaves. The estimated mean pressure due to weight of filaments is a bit smaller than the surface pressure needed to confine gravitationally unbound leaves but within factor of 2. The other source may be ram pressure due to large-scale inflows. ^{12}CO and ^{13}CO observations show that there may be inflows toward the L1495-B218 filaments. The minimum ram pressure due to the inflows is about half of the surface pressure needed to confine gravitationally unbound leaves.
8. Most of the NH_3 leaves are well aligned with their lowest-level branches within the range of $\pm 40^\circ$. The

distribution of the apparent axis ratios of NH_3 leaves is closer to that of randomly oriented prolate spheroids than that of randomly oriented oblate spheroids, which indicates that most of the NH_3 leaves are likely to be prolate. Since magnetic pressure would shape a dense core to be an oblate spheroid, magnetic fields do not seem to play an important role in determining the observed axis ratio of NH_3 leaves.

9. The NH_3 leaves and branches each follow a mass–radius relationship of $M \sim R^{-1.9 \pm 0.08}$.

Finally, both core-like and filamentary structures in the L1495-B218 filaments were successfully probed using NH_3 , which suggests that NH_3 is an excellent tracer of $\geq 10^3 \text{ cm}^{-3}$ gas for probing both dense cores and surrounding filaments in molecular clouds. We found that most of the NH_3 structures agree in the LSR velocity with the coherent filaments found by Hacar et al. (2013). We also found that most of the dense NH_3 structures (the CSAR leaves and branches) coincide with the dynamically critical filaments ($\geq 15 M_\odot \text{ pc}^{-1}$) in Hacar et al. (2013). These results suggest that a dense core may form as a pressure-confined structure, evolve to a gravitationally bound state within critical filaments, and then undergo star formation.

We are grateful to the anonymous referee for helpful suggestions. We are also grateful to A. Hacar and M. Tafalla for providing C^{18}O data. Y. Seo was supported by a NRAO Observer’s Grant (GBT/13A-126) and partially by NSF Grant AST-1008577. Y. Shirley was partially supported by NSF Grants AST-1008577 and AST-1410190. This work was carried out in part at the Jet Propulsion Laboratory, which is operated for NASA by the California Institute of Technology.

APPENDIX A METHODS OF ANALYZING PHYSICAL PROPERTIES

We derived physical quantities through finding the minimum reduced χ_r^2 value between the observed NH_3 (1, 1) and (2, 2) spectra and the spectra model. Our method of finding the minimum χ_r^2 value is a bit different from previous work in that we do not use a χ_r^2 minimization method that utilizes a covariance matrix to calculate the uncertainties but instead explore a wide range of parameter space in adaptive grids to obtain the global minimum and determine the shape of χ_r^2 volume as functions of the parameters. The common method of minimizing the χ_r^2 value utilizes a covariance matrix because the method is relatively easy and computationally fast, but parameters should be random variables. If a parameter has a specific non-random distribution, the 1σ uncertainty of that parameter may be not symmetric and may differ from the standard deviation estimated by the covariance matrix.

Exploring parameter space gives proper estimation of uncertainties, but it is usually computationally expensive if the parameter space is large and is searched at high resolution. To reduce computational time, we use the AMR method. First, we set up ranges of parameter space to explore $[x_{0,\text{lower}}, x_{0,\text{upper}}]$, where the subscript 0 denotes zeroth layer, the subscript “lower” means the lower limit of the parameter space that we are exploring, and the subscript “upper” means the upper limit. The number of grids in each parameter can be

chosen arbitrarily, but for efficiency we used fewer than 20 grids for each parameter. Second, we calculate the minimum χ_r^2 at given grid points and find its location $x_{0,\text{min}}$. Third, we set up new range of parameter space and explore as the first layer $[x_{1,\text{lower}}, x_{1,\text{upper}}]$. The range can be given as

$$x_{1,\text{lower}} = x_{0,\text{min}} - \frac{x_{0,\text{upper}} - x_{0,\text{lower}}}{2} \text{ when } x_{1,\text{lower}} \geq x_{0,\text{lower}} \quad (11)$$

and

$$x_{1,\text{upper}} = x_{0,\text{min}} + \frac{x_{0,\text{upper}} - x_{0,\text{lower}}}{2} \text{ when } x_{1,\text{upper}} \leq x_{0,\text{upper}}. \quad (12)$$

If $x_{1,\text{lower}}$ is smaller than $x_{0,\text{lower}}$, then $x_{1,\text{lower}} = x_{0,\text{lower}}$. Likewise, if $x_{1,\text{upper}}$ is larger than $x_{0,\text{upper}}$, then $x_{1,\text{upper}} = x_{0,\text{upper}}$. Fourth, we estimate the χ_r^2 value within the new range of parameter space with the same number of grids we used in the first step. At this step, the resolution is double that of the previous layer. Fifth, we repeat the second to the fourth steps until we achieve the desired resolution. If there is a global minimum of the χ_r^2 value within the range of the zeroth parameter space, this code can find the global minimum with an uncertainty of the resolution of the final layer unless the widths of local minima and global minimum are much narrower than the resolution of the final layer. In our calculations, we set the finest velocity resolution of the model to be at least one-quarter of the velocity resolution of our observation, so we may not miss the global minimum.

For the model of the NH_3 line profiles, we use the model described in Rosolowsky et al. (2008).

Figure 15 shows two examples of fitting the observed NH_3 spectra, and Figure 16 shows the χ_r^2 of the two examples in T_k versus τ_1 space. The top panel of Figure 15 is the best fit of the simple emission model to an observed strong NH_3 (1, 1) emission of $\sim 32\sigma_{T_{\text{mb}}}$, and the left panel of Figure 16 is the reduced χ^2 of fitting in T_k versus τ_1 space with the other three parameters fixed at the best-fit values. The bottom panel of Figure 15 shows an example of weaker emission spectra of NH_3 (1, 1), with the peak S/N being ~ 7.5 , and the right panel of Figure 16 is the reduced χ^2 of fitting in T_k versus τ_1 space with the other three parameters fixed at their best-fit values. Uncertainties of physical parameters are about three times larger in the weak line than those in the strong line.

We fit 13,109 spectra that satisfy the detection of NH_3 (1, 1) and (2, 2) emission above $5\sigma_{T_{\text{mb}}}$ and $3\sigma_{T_{\text{mb}}}$, respectively, where $\sigma_{T_{\text{mb}}}$ is the baseline rms. The parameter ranges for searching for the best fit are [7.5 K, 30.0 K] for T_k , [2.75 K, 30 K] for T_{ex} , $[5 \times 10^{-3}, 20]$ for τ_1 , and $[0.05 \text{ km s}^{-1}, 0.3 \text{ km s}^{-1}]$ for σ_v . The v_{lsr} is preliminarily estimated from the peak intensities of NH_3 (1, 1) and (2, 2) lines, and a more accurate value is searched for in a range of $\pm 0.1 \text{ km s}^{-1}$ from the guessed value. Typical 1σ uncertainties are $\pm 0.77 \text{ K}$ for T_k , $\pm 0.85 \text{ K}$ for T_{ex} , ± 0.26 for τ_1 , $\pm 0.013 \text{ km s}^{-1}$ for σ_v , and $\pm 0.020 \text{ km s}^{-1}$ for v_{lsr} . The overall uncertainty distributions of 13,109 fits to the spectra are shown in Figure 17.

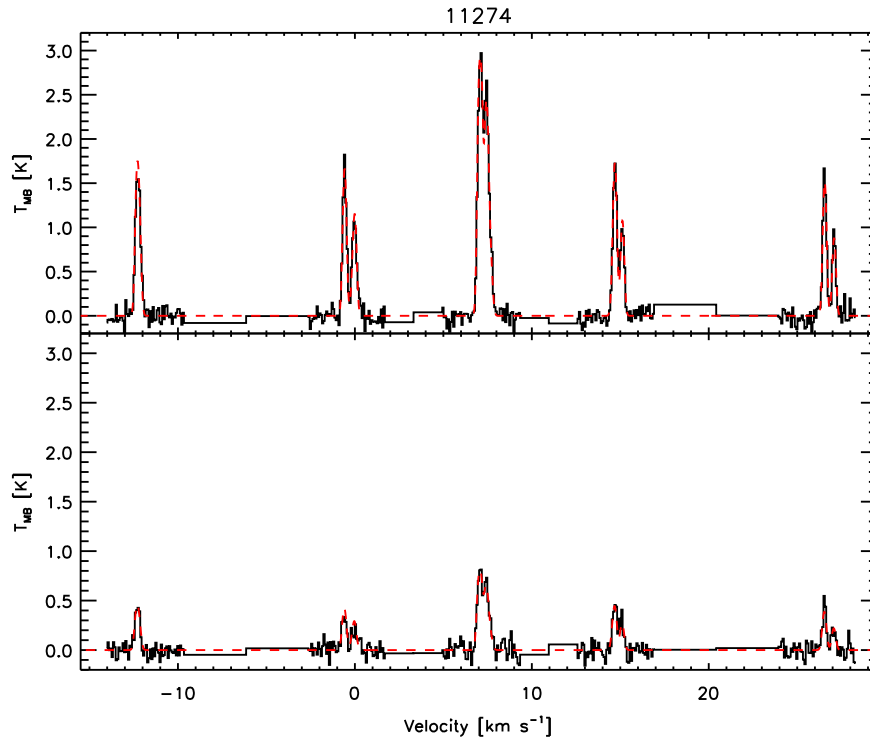


Figure 15. Examples of spectra model fitting (red dashed lines) to observed lines (black solid lines). The top panel shows NH_3 (1, 1) lines having a peak S/N equal to 32, and the bottom panel shows NH_3 (1, 1) lines having a peak S/N equal to 7.5.

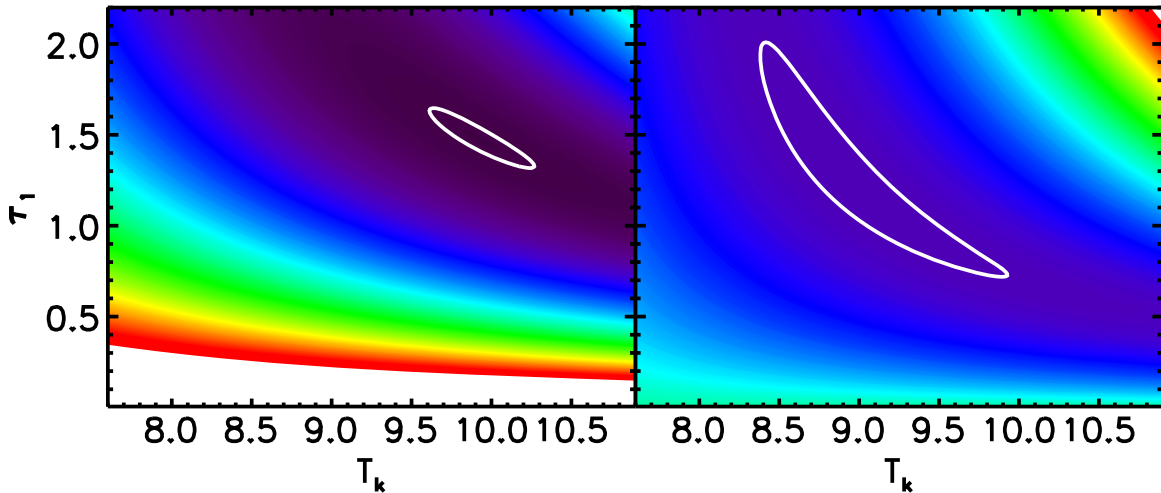


Figure 16. Examples of reduced χ^2 space in T_k vs. π_1 . The left panel shows the χ^2 space of fitting the line with a peak S/N of 32, and the right panel shows χ^2 space of fitting the line with a peak S/N of 7.5. The white contours are 1σ uncertainty limits.

APPENDIX B MODELING APPARENT AXIS RATIO DISTRIBUTIONS OF DENSE STRUCTURES USING A MONTE CARLO METHOD

We analyzed morphology of dense structures through estimating the minimum χ^2 value (not reduced χ^2) between the observed distribution of apparent axis ratios and distribution models. The distribution models are made using a Monte Carlo method. For each model, we imposed 10 million spheroids and assumed that all of the spheroids are in either oblate or prolate shapes. The apparent axis ratios of the

spheroids are determined by the intrinsic axis ratio of the spheroid and the angle between the observer's line of sight and the equatorial plane of the spheroid as follows:

$$p(q, \theta) = \left[1 - (1 - q^2) \cos^2 \theta \right]^{\frac{1}{2}} \text{ for oblate,} \quad (13)$$

$$p(q, \theta) = q \left[1 - (1 - q^2) \sin^2 \theta \right]^{\frac{1}{2}} \text{ for prolate,} \quad (14)$$

where p is the apparent axis ratio of the spheroid, q is the intrinsic axis ratio of the spheroid (short axis/long axis),

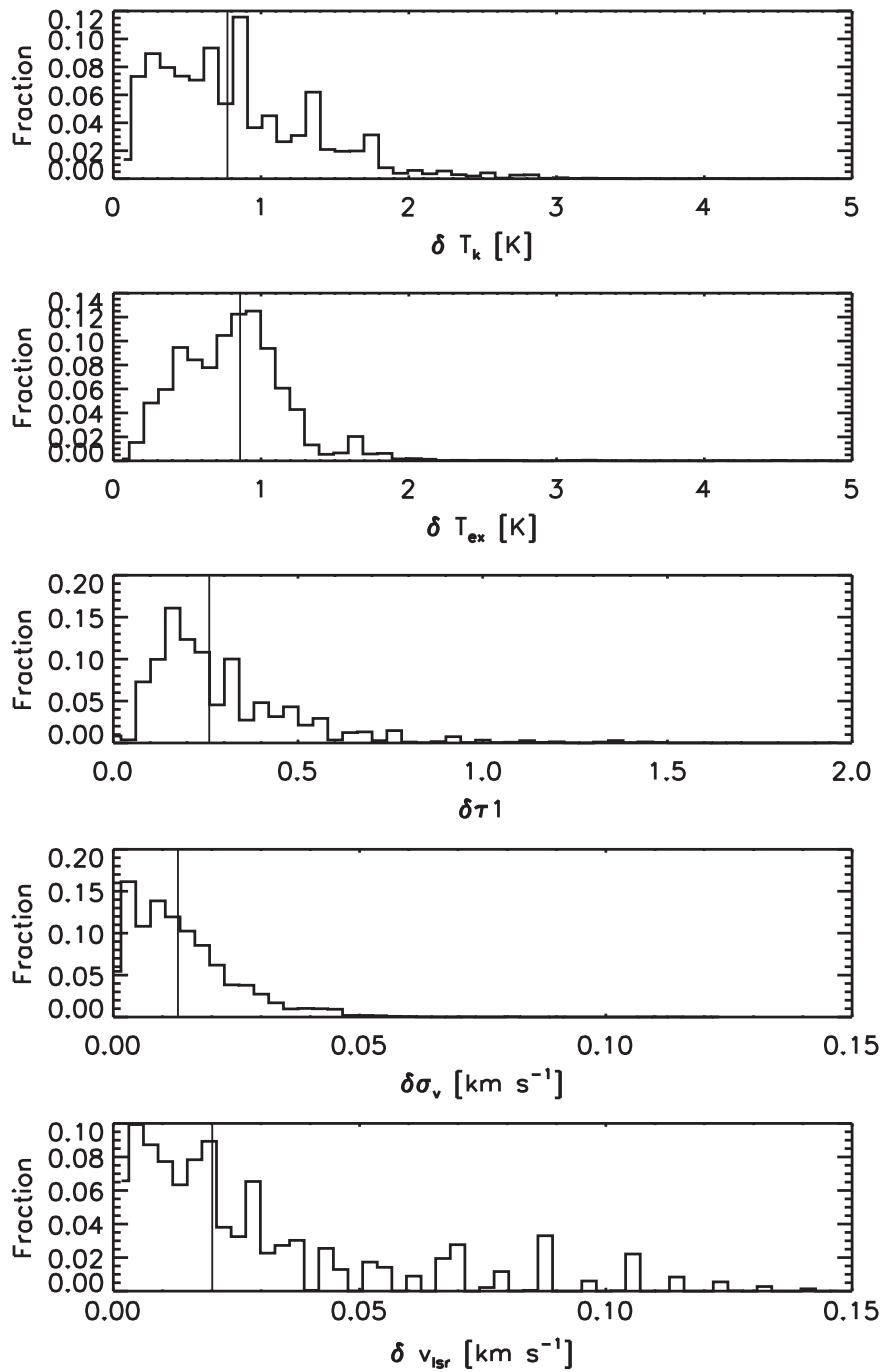


Figure 17. Distributions of 1σ uncertainties in the spectra fittings. Vertical lines represent the median values.

and θ is the angle between the observer's line of sight and the equatorial plane of the spheroid. We assumed that the intrinsic axis ratios of the spheroids follow a Gaussian distribution and the angles between the observer's line of sight and the equatorial planes of spheroids have random values with a uniform distribution within $[-\theta_{\text{limit}}, \theta_{\text{limit}}]$. The mean value and width of a Gaussian distribution and θ_{limit} serve as input parameters of the model. Using the above equations with the given input parameters, we modeled a distribution of apparent axis ratios of the spheroids. We made 400,000 models with different mean values $\langle q \rangle$ and widths σ_q of Gaussian distributions of the intrinsic axis ratios and θ_{limit} .

The range of $\langle q \rangle$ that is exploited in our models is from 0.01 to 1 with an interval of 0.01, and the range of σ_q is from 0.01 to 1 with an interval of 0.01. The range of θ_{limit} is from 0° to 90° with an interval of 5° . We compared all 400,000 distribution models to the observed distribution and found the best-fit model by minimizing the χ^2 value.

REFERENCES

- Aikawa, Y., Herbst, E., Roberts, H., & Caselli, P. 2005, *ApJ*, 620, 330
 André, P., Men'shchikov, A., Bontemps, S., et al. 2010, *A&A*, 518, L102

- André, P., di Francesco, J., Ward-Thompson, D., et al. 2014, Protostars and Planets VI, ed. H. Beuther, R. S. Klessen, C. P. Dullemond, & T. Henning (Tucson, AZ: Univ. Arizona Press), 27
- Bacmann, A., Lefloch, B., Ceccarelli, C., et al. 2002, *A&A*, **389**, L6
- Balsara, D., Ward-Thompson, D., & Crutcher, R. M. 2001, *MNRAS*, **327**, 715
- Barnard, E. E., Frost, E. B., & Calvert, M. R. 1927, CMWCI
- Beckwith, S. V. W., Sargent, A. I., Chini, R. S., & Guesten, R. 1990, *AJ*, **99**, 924
- Benson, P. J., & Myers, P. C. 1989, *ApJS*, **71**, 89
- Bergin, E. A., Alves, J., Huard, T., & Lada, C. J. 2002, *ApJL*, **570**, L101
- Bertoldi, F., & McKee, C. F. 1992, *ApJ*, **395**, 140
- Bonnor, W. B. 1956, *MNRAS*, **116**, 351
- Caselli, P., & Myers, P. C. 1994, Clouds, Cores, and Low Mass Stars, 65, ed. D. P. Clemens & R. Barvainis (San Francisco: ASP), 52
- Caselli, P., Benson, P. J., Myers, P. C., & Tafalla, M. 2002, *ApJ*, **572**, 238
- Caselli, P., Walmsley, C. M., Tafalla, M., Dore, L., & Myers, P. C. 1999, *ApJL*, **523**, L165
- Chapman, N. L., Goldsmith, P. F., Pineda, J. L., et al. 2011, *ApJ*, **741**, 21
- Chen, C.-Y., & Ostriker, E. C. 2014, *ApJ*, **785**, 69
- Codella, C., Welsch, R., Henkel, C., Benson, P. J., & Myers, P. C. 1997, *A&A*, **324**, 203
- Danby, G., Flower, D. R., Valiron, P., Schilke, P., & Walmsley, C. M. 1988, *MNRAS*, **235**, 229
- Dib, S., Kim, J., Vázquez-Semadeni, E., Burkert, A., & Shadmehri, M. 2007, *ApJ*, **661**, 262
- Di Francesco, J., Evans, N. J., II, Caselli, P., et al. 2007, Protostars and Planets V, ed. B. Reipurth, D. Jewitt, & K. Keil (Tucson, AZ: Univ. of Arizona Press), 17
- Draine, B. T. 2011, Physics of the Interstellar and Intergalactic Medium (Princeton, NJ: Princeton Univ. Press)
- Ebert, R. 1955, *ZAp*, **36**, 222
- Ebert, R. 1957, *ZAp*, **42**, 263
- Evans, N. J., II 1999, *ARAA*, **37**, 311
- Flower, D. R., Pineau Des Forêts, G., & Walmsley, C. M. 2006, *A&A*, **456**, 215
- Ford, A. B., & Shirley, Y. L. 2011, *ApJ*, **728**, 144
- Goldsmith, P. F., Heyer, M., Narayanan, G., et al. 2008, *ApJ*, **680**, 428
- Gómez, G. C., Vázquez-Semadeni, E., Shadmehri, M., & Ballesteros-Paredes, J. 2007, *ApJ*, **669**, 1042
- Gong, H., & Ostriker, E. C. 2009, *ApJ*, **699**, 230
- Gong, H., & Ostriker, E. C. 2011, *ApJ*, **729**, 120
- Goodman, A. A., Barranco, J. A., Wilner, D. J., & Heyer, M. H. 1998, *ApJ*, **504**, 223
- Hacar, A., Tafalla, M., Kauffmann, J., & Kovács, A. 2013, *A&A*, **554**, A55
- Heitsch, F. 2013a, *ApJ*, **769**, 115
- Heitsch, F. 2013b, *ApJ*, **776**, 62
- Heitsch, F., Ballesteros-Paredes, J., & Hartmann, L. 2009, *ApJ*, **704**, 1735
- Heitsch, F., Hartmann, L. W., & Burkert, A. 2008, *ApJ*, **683**, 786
- Hirota, T., Maezawa, H., & Yamamoto, S. 2004, *ApJ*, **617**, 399
- Ho, P. T. P., & Townes, C. H. 1983, *ARA&A*, **21**, 239
- Hunter, J. H., Jr. 1979, *ApJ*, **233**, 946
- Jijina, J., Myers, P. C., & Adams, F. C. 1999, *ApJS*, **125**, 161
- Kainulainen, J., Beuther, H., Banerjee, R., Federrath, C., & Henning, T. 2011, *A&A*, **530**, AA64
- Kainulainen, J., Federrath, C., & Henning, T. 2014, *Sci*, **344**, 183
- Kauffmann, J., Pillai, T., Shetty, R., Myers, P. C., & Goodman, A. A. 2010, *ApJ*, **716**, 433
- Kawachi, T., & Hanawa, T. 1998, *PASJ*, **50**, 577
- Kenyon, S. J., Gomez, M., & Whitney, B. A. 2008, Handbook of Star Forming Regions, Vol. 1, ed. B. Reipurth (San Francisco, CA: ASP), 405
- Khesali, A., Nejad-Asgar, M., & Mohammadpour, M. 2013, *MNRAS*, **430**, 961
- Kirk, J. M., Ward-Thompson, D., Palmeirim, P., et al. 2013, *MNRAS*, **432**, 1424
- Klessen, R. S., Ballesteros-Paredes, J., Vázquez-Semadeni, E., & Durán-Rojas, C. 2005, *ApJ*, **620**, 786
- Kryukova, E., Megeath, S. T., Gutermuth, R. A., et al. 2012, *AJ*, **144**, 31
- Kuiper, T. B. H., Langer, W. D., & Velusamy, T. 1996, *ApJ*, **468**, 761
- Lada, C. J., Muench, A. A., Rathborne, J., Alves, J. F., & Lombardi, M. 2008, *ApJ*, **672**, 410
- Larson, R. B. 1981, *MNRAS*, **194**, 809
- Lee, C. W., Myers, P. C., & Tafalla, M. 2001, *ApJS*, **136**, 703
- Lizano, S., & Shu, F. H. 1989, *ApJ*, **342**, 834
- Loinard, L., Torres, R. M., Mioduszewski, A. J., et al. 2007, *ApJ*, **671**, 546
- Lombardi, M., Alves, J., & Lada, C. J. 2006, *A&A*, **454**, 781
- Lovas, F. J., & Dragolet, R. 2003, Recommended Rest Frequencies for Observed Interstellar Molecular Microwave Transitions (Washington: NBS)
- Maret, S., Faure, A., Scifoni, E., & Wiesenfeld, L. 2009, *MNRAS*, **399**, 425
- Marsh, K. A., Griffin, M. J., Palmeirim, P., et al. 2014, *MNRAS*, **439**, 3683
- Men'shchikov, A., André, P., Didelon, P., et al. 2010, *A&A*, **518**, L103
- Miesch, M. S., & Bally, J. 1994, *ApJ*, **429**, 645
- Motte, F., André, P., & Neri, R. 1998, *A&A*, **336**, 150
- Motte, F., André, P., Ward-Thompson, D., & Bontemps, S. 2001, *A&A*, **372**, L41
- Myers, P. C., Fuller, G. A., Goodman, A. A., & Benson, P. J. 1991, *ApJ*, **376**, 561
- Nakamura, F., & Li, Z.-Y. 2008, *ApJ*, **687**, 354
- Narayanan, G., Heyer, M. H., Brunt, C., et al. 2008, *ApJS*, **177**, 341
- Onishi, T., Mizuno, A., Kawamura, A., Ogawa, H., & Fukui, Y. 1996, *ApJ*, **465**, 815
- Onishi, T., Mizuno, A., Kawamura, A., Tachihara, K., & Fukui, Y. 2002, *ApJ*, **575**, 950
- Ossenkopf, V., & Henning, T. 1994, *A&A*, **291**, 943
- Ostriker, J. 1964, *ApJ*, **140**, 1056
- Padoan, P., Bally, J., Billawala, Y., Juvela, M., & Nordlund, Å. 1999, *ApJ*, **525**, 318
- Padoan, P., Nordlund, Å., Rögnvaldsson, Ö E., & Goodman, A. 2001, From Darkness to Light: Origin and Evolution of Young Stellar Clusters, 243, ed. T. Montmerle, & P. André (San Francisco, CA: ASP), 279
- Palmeirim, P., André, P., Kirk, J., et al. 2013, *A&A*, **550**, A38
- Panopoulou, G. V., Tassis, K., Goldsmith, P. F., & Heyer, M. H. 2014, *MNRAS*, **444**, 2507
- Pineda, J. E., Goodman, A. A., Arce, H. G., et al. 2010a, *ApJL*, **712**, L116
- Pineda, J. L., Goldsmith, P. F., Chapman, N., et al. 2010b, *ApJ*, **721**, 686
- Pontoppidan, K. M. 2006, *A&A*, **453**, L47
- Rebull, L. M., Koenig, X. P., Padgett, D. L., et al. 2011, *ApJS*, **196**, 4
- Rebull, L. M., Padgett, D. L., McCabe, C.-E., et al. 2010, *ApJS*, **186**, 259
- Reiter, M., Shirley, Y. L., Wu, J., et al. 2011, *ApJS*, **195**, 1
- Ridge, N. A., Schnee, S. L., Goodman, A. A., & Foster, J. B. 2006, *ApJ*, **643**, 932
- Rosolowsky, E. W., Pineda, J. E., Foster, J. B., et al. 2008, *ApJS*, **175**, 509
- Scalo, J. M. 1984, *ApJ*, **277**, 556
- Schmalzl, M., Kainulainen, J., Quanz, S. P., et al. 2010, *ApJ*, **725**, 1327
- Seo, Y. M., Hong, S. S., & Shirley, Y. L. 2013, *ApJ*, **769**, 50
- Shirley, Y. L. 2015, *PASP*, **127**, 299
- Shirley, Y. L., Huard, T. L., Pontoppidan, K. M., et al. 2011, *ApJ*, **728**, 143
- Stodólkiewicz, J. S. 1963, *AcA*, **13**, 30
- Suzuki, H., Yamamoto, S., Ohishi, M., et al. 1992, *ApJ*, **392**, 551
- Tafalla, M., Myers, P. C., Caselli, P., & Walmsley, C. M. 2004, *A&A*, **416**, 191
- Tafalla, M., Myers, P. C., Caselli, P., Walmsley, C. M., & Comito, C. 2002, *ApJ*, **569**, 815
- Tafalla, M., & Santiago, J. 2004, *A&A*, **414**, L53
- Tatematsu, K., Hirota, T., Ohashi, S., et al. 2014, *ApJ*, **789**, 83
- Torres, R. M., Loinard, L., Mioduszewski, A. J., & Rodríguez, L. F. 2009, *ApJ*, **698**, 242
- Vázquez-Semadeni, E., Kim, J., & Ballesteros-Paredes, J. 2005, *ApJL*, **630**, L49
- Willacy, K., Langer, W. D., & Velusamy, T. 1998, *ApJL*, **507**, L171
- Yamamoto, S., Saito, S., Kawaguchi, K., et al. 1990, *ApJ*, **361**, 318
- Young, K. E., Lee, J.-E., Evans, N. J., II, Goldsmith, P. F., & Doty, S. D. 2004, *BAAS*, **36**, 775