

Central Lancashire Online Knowledge (CLOK)

Title	Estimating the prevalence, hospitalisation and mortality from type 2 diabetes mellitus in Nigeria: a systematic review and meta-analysis
Type	Article
URL	https://clock.uclan.ac.uk/id/eprint/17900/
DOI	https://doi.org/10.1136/bmjopen-2016-015424
Date	2017
Citation	Adeloye, Davies, Ige, Janet O, Aderemi, Adewale V, Adeleye, Ngozi, Amoo, Emmanuel O, Auta, Asa and Oni, Gbolahan (2017) Estimating the prevalence, hospitalisation and mortality from type 2 diabetes mellitus in Nigeria: a systematic review and meta-analysis. BMJ Open, 7 (5). e015424.
Creators	Adeloye, Davies, Ige, Janet O, Aderemi, Adewale V, Adeleye, Ngozi, Amoo, Emmanuel O, Auta, Asa and Oni, Gbolahan

It is advisable to refer to the publisher's version if you intend to cite from the work.
<https://doi.org/10.1136/bmjopen-2016-015424>

For information about Research at UCLan please go to <http://www.uclan.ac.uk/research/>

All outputs in CLOK are protected by Intellectual Property Rights law, including Copyright law. Copyright, IPR and Moral Rights for the works on this site are retained by the individual authors and/or other copyright owners. Terms and conditions for use of this material are defined in the <http://clock.uclan.ac.uk/policies/>

BMJ Open Estimating the prevalence, hospitalisation and mortality from type 2 diabetes mellitus in Nigeria: a systematic review and meta-analysis

Davies Adeloye,^{1,2} Janet O Ige,³ Adewale V Aderemi,⁴ Ngozi Adeleye,⁵ Emmanuel O Amoo,¹ Asa Auta,⁶ Gbolahan Oni¹

To cite: Adeloye D, Ige JO, Aderemi AV, *et al.* Estimating the prevalence, hospitalisation and mortality from type 2 diabetes mellitus in Nigeria: a systematic review and meta-analysis. *BMJ Open* 2017;**7**:e015424. doi:10.1136/bmjopen-2016-015424

► Prepublication history and additional material is available. To view please visit the journal (<http://dx.doi.org/10.1136/bmjopen-2016-015424>).

Received 2 December 2016
Revised 25 February 2017
Accepted 30 March 2017



CrossMark

¹Demography and Social Statistics, Covenant University, Ota, Nigeria

²Centre for Global Health Research, Usher Institute, University of Edinburgh, Edinburgh, UK

³Faculty of Health and Applied Sciences, University of the West of England, Bristol, UK

⁴Department of Biochemistry, College of Health Sciences, Osun State University, Osogbo, Nigeria

⁵Economics and Development Studies, Covenant University, Ota, Nigeria

⁶School of Pharmacy and Biomedical Sciences, University of Central Lancashire, Preston, UK

Correspondence to

Dr Davies Adeloye;
bummyadeloy@gmail.com

ABSTRACT

Background There is not yet a comprehensive evidence-based epidemiological report on type 2 diabetes mellitus (T2DM) in Nigeria. We aimed to estimate country-wide and zonal prevalence, hospitalisation and mortality rates of T2DM in Nigeria.

Methods We searched MEDLINE, EMBASE, Global Health, Africa Journals Online (AJOL) and Google Scholar for population and hospital-based studies on T2DM in Nigeria. We conducted a random-effects meta-analysis on extracted crude estimates, and applied a meta-regression epidemiological model, using the United Nations demographics for Nigeria in 1990 and 2015 to determine estimates of diabetes in Nigeria for the two years.

Results 42 studies, with a total population of 91 320, met our selection criteria. Most of the studies selected were of medium quality (90.5%). The age-adjusted prevalence rates of T2DM in Nigeria among persons aged 20–79 years increased from 2.0% (95% CI 1.9% to 2.1%) in 1990 to 5.7% (95% CI 5.5% to 5.8%) in 2015, accounting for over 874 000 and 4.7 million cases, respectively. The pooled prevalence rate of impaired glucose tolerance was 10.0% (95% CI 4.5% to 15.6%), while impaired fasting glucose was 5.8% (95% CI 3.8% to 7.8%). Hospital admission rate for T2DM was 222.6 (95% CI 133.1 to 312.1) per 100 000 population with hyperglycaemic emergencies, diabetic foot and cardiovascular diseases being most common complications. The overall mortality rate was 30.2 (95% CI 14.6 to 45.8) per 100 000 population, with a case fatality rate of 22.0% (95% CI 8.0% to 36.0%).

Conclusion Our findings suggest an increasing burden of T2DM in Nigeria with many persons currently undiagnosed, and few known cases on treatment.

INTRODUCTION

Many studies have reported increasing prevalence of type 2 diabetes mellitus (T2DM) globally.^{1–3} According to International Diabetes Federation (IDF), there were over 151 million people with diabetes in 2000,¹ 194 million in 2003,² 246 million in 2006,³ 285 million in 2010^{4,5} and 415 million in 2015.⁶ The WHO reported that people living with diabetes globally increased from 108 million

Strengths and limitations of this study

- This study provides a comprehensive report on the epidemiology of type 2 diabetes mellitus (T2DM) in Nigeria since the last nationwide survey of non-communicable diseases in 1997.
- Estimates provided are based on original population and hospital-based studies on type 2 diabetes conducted across the six geopolitical zones of Nigeria.
- The study is limited by lack of data on T2DM in northern parts of Nigeria, suggesting the need for more research in the region.

in 1980 to 422 million in 2014, with overweight and obesity being major risk factors.⁷ This increase was also observed in Africa, with diabetes cases increasing from 4 million to 25 million between 1980 and 2014.⁷ Research findings have shown that prevalence rates of diabetes in urban Africa are in fact similar with, or even higher than, what is obtained in some developed countries.^{8,9} This has been linked to rapidly changing demographic trends, increased rate of urbanisation, unhealthy diets and gradual adoption of Western lifestyles in many African settings.¹⁰

In Nigeria, the most populous country in Africa, the prevalence of T2DM has been high and still increasing, with the country widely reported as having Africa's highest burden of diabetes.^{10,11} However, there are no known country-wide surveys or any reported attempt within Nigeria in recent times to specifically estimate the burden of diabetes in the country. The last national survey of non-communicable diseases (NCDs) was conducted in 1997 with a prevalence of 2.2% reported for diabetes,¹² and the 2003 national NCDs survey was mainly in the South-West region and results were inconclusive.¹³ In the 2013 IDF global study, a prevalence of 5% was

estimated for Nigeria, accounting for 3.9 million cases among persons aged 20–79 years.⁸ The researchers specifically noted that Nigeria was among countries without up-to-date data on diabetes; hence, the Nigerian estimate was modelled from pooled estimates in Cameroon, due to relatively similar geographic, ethnic and socioeconomic patterns with Nigeria.⁸

Due to the relatively limited epidemiological evidence on the burden of T2DM in Nigeria,^{11 14} the few reported estimates may have been based on advanced modelling and extrapolation of very scarce data, and may not necessarily represent the true burden of the disease in the country.^{8 15} The WHO reports that there is still need for more research on the burden of diabetes, including country-specific response to diabetes treatment and management, and anthropological and cultural perspectives of diabetes in Africa.^{7 16} With many research, treatment and management gaps remaining unaddressed, a study focusing on estimating the burden for appropriate public health and policy response has been widely advocated.¹⁴ We aimed to systematically review the literature on T2DM in Nigeria towards providing national and regional estimates of the prevalence (including undiagnosed cases, persons on treatment and mean fasting plasma glucose (FPG) concentration), hospitalisation and mortality from T2DM in Nigeria.

METHODS

This study was conducted in accordance with the supplementary MOOSE guidelines of systematic reviews of observational studies.¹⁷

Search terms and strategy

Further to an initial scoping exercise with a librarian, Medical Subject Headings (MeSH), search terms and text words that fit into relevant health databases, including MEDLINE, EMBASE, Global Health and Africa Journals Online (AJOL), were identified (table 1).

The databases' search was conducted on 10 February 2017, and limited to studies published between 1 January 1985 and 31 December 2016, to ensure a relatively consistent diabetes diagnostic criteria not earlier than the WHO 1985 guidelines, which reflects to some degree the current WHO and American Diabetes Association (ADA) case definitions.^{16 18–20} Unpublished documents were sourced from Google Scholar and online sites. The abstracts of all studies were reviewed and full texts of relevant studies were accessed. The references of initially accessed studies were further hand-searched for additional studies and data sources. The authors of relevant papers were contacted for missing information.

Eligibility criteria

Studies were included in the review if they met the following criteria: (1) population based conducted among adults aged 20 years or more, residing in Nigeria, and reporting the prevalence, undiagnosed cases and treatment rates of type 2 diabetes and/or prediabetes, or enough data to compute these estimates; or (2) hospital based and providing information on hospitalisations, complications, death rates or case fatality rates of T2DM in a Nigerian population.

We excluded studies that were (1) primarily on type 1 diabetes; (2) conducted on paediatric population (0–14 years), or among populations of Nigerian origin residing outside Nigeria; (3) hospital based without any report on

Table 1 Search terms

#	Searches
1	africa/ or africa, western/ or nigeria/
2	exp vital statistics/
3	(incidence* or prevalence* or morbidity or mortality).tw.
4	(disease adj3 burden).tw.
5	exp 'cost of illness'/
6	case fatality rate.tw
7	hospital admissions.tw
8	Disability adjusted life years.mp.
9	(initial adj2 burden).tw.
10	exp risk factors/
11	2 or 3 or 4 or 5 or 6 or 7 or 8 or 9 or 10
12	exp glucose metabolism disorders/ or exp diabetes mellitus/ or exp diabetes mellitus/ or exp diabetes mellitus, type 2/ or exp diabetic ketoacidosis/ or exp prediabetic state/ or exp glycosuria/ or exp hyperglycemia/ or exp glucose intolerance/
13	1 and 11 and 12
14	Limit 13 to '1985-current'



hospitalisations, or deaths due to diabetes complications; (4) solely based on self-reported diagnosis of T2DM; (5) on diabetes, but conducted among persons with co-morbidities; or (6) case series, reviews, commentaries, letters or editorials.

Data extraction

Literature search and assessment of eligible studies were conducted by two parallel reviewers, with an eligibility guideline to ensure that the selection criteria were consistently applied. Data on location, study period, study design, study setting (urban or rural), sample size, diagnostic criteria and mean age of the population were extracted. These were matched with corresponding data on mean FPG, prevalence, undiagnosed cases, persons on treatment, hospital admission rates, indications for admission, deaths and case fatality rates of T2DM (and for impaired glucose tolerance (IGT) or impaired fasting glucose (IFG) when available). For studies conducted on the same study site, population or cohort, the first chronologically published study was selected, and all additional data from other studies were included in the selected paper. Extracted data were sorted by geopolitical zones in Nigeria, and stored in Microsoft Excel file format.

Quality assessment

For each full text selected, we further screened for explicit description of methodology, case definitions, blood glucose measurements and generalisability of reported estimates to a larger population within the geopolitical zone. For case definitions, we included studies with diagnosis of (1) *diabetes*—defined as chronic metabolic condition characterised by raised blood glucose resulting from impairment in secretion of insulin, its action or both, based on FPG levels of ≥ 126 mg/dL (7.0 mmol/L), or 2-hour postprandial glucose (2 hr-pG) reading of ≥ 200 mg/dL (11.1 mmol/L) after a glucose load of 75 g, or random blood glucose (RBG) readings of ≥ 200 mg/dL (11.1 mmol/L);^{16 18–20} (2) *impaired glucose tolerance*—defined as elevated non-diabetic levels of blood glucose, based on blood glucose levels of ≥ 140 mg/dL (7.8 mmol/L) 2 hours after consuming 75 g of glucose^{16 18–20}; and (3) *impaired fasting glucose*—defined as elevated non-diabetic fasting blood glucose, based on blood glucose levels of 110–125 mg/dL (6.1–6.9 mmol/L).^{16 18–20} To allow for fairly consistent pooled estimates, we assessed the appropriateness of statistical analyses employed in the estimation of T2DM prevalence or mortality, and further assessed studies for heterogeneities within and outside various population groups. For the quality grading, we adapted a previously used quality assessment criteria for studies examining the prevalence of chronic diseases (see online supplementary file, for details of the grading criteria).^{21–24} All studies graded as *high or moderate quality* were included, while the *low-quality* studies were excluded from the review.

Outcome measures and analysis

A random-effects meta-analysis, using DerSimonian and Laird Method,²⁵ was employed on the individual study estimates to arrive at crude national and regional summary estimates of prevalence, hospital admission and mortality of T2DM in Nigeria. Standard errors were determined from the reported crude estimates and population denominators, assuming a binomial (or Poisson) distribution. Heterogeneity between studies was assessed using I-squared (I^2) statistics,²⁶ and subgroup analysis was conducted to identify potential sources of heterogeneity. Population-based data (reporting on T2DM prevalence) and hospital-based data (reporting on hospitalisations, complications and deaths) were analysed separately. Due to limited data, a meta-regression epidemiological model was only applied to T2DM prevalence rates. The model was based on aggregated age from each study (as these had more data points), and adjusted for study period and sample size. Due to demographic and epidemiological transitions, it is understandable that the prevalence rates of diabetes and most chronic diseases may increase with age;¹⁰ however, the relationship may not be linear. Hence, in our preliminary analyses, we experimented with various models (linear, exponential, polynomial, logarithmic, etc) to determine which was most predictive, that is, the model with the greatest proportion of variance (R^2) of diabetes prevalence as explained by age. This was applied to the final model, and the best fit was used to determine the number of T2DM cases at midpoints of the United Nation (UN) population 5-year age groups for Nigeria for the years 1990 and 2015. Our data analysis has been described in detail in previous studies.^{27 28} All statistical analyses were conducted on STATA (Stata V.13).

Ethical review

This study is a review of publicly available literature and data on T2DM in Nigeria. Ethical review was therefore not required for this study. The study was however conducted in strict compliance to the MOOSE guidelines.

RESULTS

Search results

Our databases' search returned 1664 studies (MEDLINE 505, EMBASE 975, Global Health 132 and AJOL 52). Additional seven studies were identified through Google Scholar and search of reference list of relevant studies. There were 1232 studies assessed after duplicates were removed. On applying the inclusion and exclusion criteria, 1164 studies were excluded, and of the remaining 68 studies, 26 were excluded on applying the quality criteria (table 2, see online supplementary file). A total of 42 studies^{29–70} were finally selected for the review (figure 1).

Study characteristics

Of the 42 retained studies, 36 were population-based cross-sectional studies reporting on prevalence of T2DM

Table 2 Characteristics of retained T2DM studies in Nigeria

Zones	Location	Period	Design	Setting	Sample size	Diagnostic criteria	Age (years)	Mean FPG (mmol/l)	T2DM Prevalence (%)	Quality Grading
North-Central	Ilorin, Kwara State ²⁹	1988	Population-based cross-sectional study	Mixed	2800	2 hr-pG or RBG>11.1 mmol/L	60.7	4.6	1.4	Moderate
	Ilorin, Kwara State ³⁰	2008	Population-based cross-sectional study	Urban	281	FPG>7 mmol/L, RBG>11.1 mmol/L	50.5	–	1.5	Moderate
	Gindiri, Plateau State ³¹	2014	Population-based cross-sectional study	Rural	295	FPG>7 mmol/L	47.5	5.9	5.1	Moderate
North-East	Maiduguri, Borno State ³²	2009	Population-based cross-sectional study	Urban	242	WHO 1999	44.4	–	7.0	Moderate
	Maiduguri, Borno State ³³	1999	Population-based cross-sectional study	Rural	500	FPG>7 mmol/L	45.5	5.2	2.6	Moderate
North-West	Dakace Village, Zaria, Kaduna State ³⁴	2007	Population-based cross-sectional study	Rural	299	WHO 1998	59.4	–	2.0	Moderate
	Sokoto, Sokoto State ³⁵	2011	Population-based cross-sectional study	Urban	389	WHO 1999	39.3	5.4	4.6	Moderate
	Sokoto, Sokoto State ³⁶	2013	Population-based cross-sectional study	Rural	393	WHO 1999	38.5	5.0	0.8	Moderate
	Katsina, Katsina State ³⁷	2006	Population-based cross-sectional study	Urban	300	FPG>7 mmol/L, self-report, known diabetic on treatment	37.6	4.6	5.3	Moderate
	Umuahia, Abia State ³⁸	2000–2004	Hospital-based retrospective record review	Urban	1124*	FPG>7 mmol/L, past diabetes history, admission diagnosis	55 [†]	–	14.0 [†]	Moderate
	Umuahia, Abia State ³⁹	2014	Population-based cross-sectional study	Urban	365	WHO-IDF 2006	46	4.8	3.0	Moderate
	Imezi-Owa, Enugu State ⁴⁰	2011	Population-based cross-sectional study	Rural	858	WHO 1998	59.8	4.6	4.4	Moderate
	Aba, Abia State ⁴¹	2009–2011	Hospital-based retrospective record review	Urban	853*	FPG>7 mmol/L, past diabetes history, admission diagnosis	56.4 [†]	–	–	Moderate
	Nkanu East LGA, Enugu State ⁴²	2013	Population-based cross-sectional study	Rural	824	WHO-IDF 2006	51.1	5.3	4.8	Moderate
	Abia State ⁴³	2013	Population-based cross-sectional study	Mixed	2983	FPG>7 mmol/L, RBG>11.1 mmol/L, self report	41.7	–	5	Moderate

Continued

Table 2 Continued

Zones	Location	Period	Design	Setting	Sample size	Diagnostic criteria	Age (years)	Mean FPG (mmol/l)	T2DM Prevalence (%)	Quality Grading
South-South	Abia State ⁴⁴	2011–2012	Population-based cross-sectional study	Mixed	2183	FPG>7 mmol/L	43.7	–	3.6	Moderate
	Naze, Owerri, Imo State ⁴⁵	2009	Population-based cross-sectional study	Urban	253	FPG>7 mmol/L	53.4	5.8	6.7	Moderate
	Port Harcourt, Rivers State ⁴⁷	2010	Population-based cross-sectional study	Rural	500	WHO-IDF 2006	41.3	4	2.2	Moderate
South-West	Uyo, Akwa Ibom State ⁴⁶	2008–2010	Population-based cross-sectional study	Urban	3500	FPG>7 mmol/L, 2 hr-pG or RBG>11.1 mmol/L	49.8	–	10.5	Moderate
	Calabar, Cross Rivers State ⁴⁸	2014	Population-based cross-sectional study	Urban	1134	WHO 1999	38.9	–	6.5	High
	Esan South, Edo State ⁴⁹	2013	Population-based cross-sectional study	Rural	845	WHO-IDF 2006	56.4	–	4.6	Moderate
South-East	Port Harcourt, Rivers State ⁵⁰	2001	Population-based cross-sectional study	Urban	403	2 hr-pG or RBG>11.1 mmol/L	61.5	7.45	26.3	Moderate
	Port Harcourt, Rivers State ⁵¹	2000	Population-based cross-sectional study	Urban	502	2 hr-pG or RBG>11.1 mmol/L, WHO 1999	48	4.8	6.8	High
	Ndokwa West LGA, Delta State ⁵²	2014	Population-based cross-sectional study	Mixed	422	ADA 2003, WHO 1999	40.6	5.1	5.4	Moderate
South-West	Calabar, Cross River State ⁵³	2006–2010	Hospital-based retrospective record review	Urban	360 [*]	FPG>7 mmol/L, past diabetes history, admission diagnosis	48.5 [†]	–	0.8 [†]	Moderate
	Ido-Ekiti, Ekiti State ⁵⁵	2003–2007	Hospital-based retrospective record review	Urban	118 [*]	FPG>7 mmol/L, past diabetes history, admission diagnosis	57 [†]	–	3.0 [†]	Moderate
	Ikeja, Lagos State ⁵⁴	1990–2000	Hospital-based retrospective record review	Urban	242 [*]	FPG>7 mmol/L, past diabetes history, admission diagnosis	–	–	2.3.0 [†]	Moderate
South-West	Ikeja, Lagos State ⁵⁶	2006	Hospital-based prospective observational study	Urban	206 [∞]	WHO 1999, past diabetes history	–	–	73.0 [†]	Moderate
	Ogbomoso, Oyo State ⁵⁷	2013	Population-based cross-sectional study	Urban	206	2 hr-pG or RBG>11.1 mmol/L	45.3	–	1.5	Moderate

Continued

Table 2 Continued

Zones	Location	Period	Design	Setting	Sample size	Diagnostic criteria	Age (years)	Mean FPG (mmol/l)	T2DM Prevalence (%)	Quality Grading
	Ijora, Ajeunle and Makoko, Lagos State ⁵⁸	2010–2012	Population-based cross-sectional study	Urban	2434	2 hr-pG or RBG>11.1 mmol/L	51	–	3.4	Moderate
	Ogun State ⁵⁹	2013	Population-based cross-sectionals study	Mixed	58657	FPG>7 mmol/L, RBG>11.1 mmol/L	40.7	5.5	5.1	Moderate
	Osogbo, Osun State ⁶⁰	2009	Population-based cross-sectional study	Urban	586	FPG>7 mmol/L, RBG>11.1 mmol/L, known diabetic on treatment	42.4	5.0	3.8	Moderate
	Ibadan and Igbo-Ora, Oyo State ⁶¹	1994	Population-based cross-sectional study	Mixed	500	FPG>7 mmol/L, 2hr-pG>11.1 mmol/L	60.8	4.3	1.6	Moderate
	Aaye Ekiti, Ekiti State ⁶²	2013	Population-based cross-sectional study	Rural	208	ADA 2003	66.8	4.6	4.8	Moderate
	Lagos, Lagos State ⁶³	1988	Population-based cross-sectional study	Urban	1617	2 hr-pG or RBG>11.1 mmol/L	44.2	4.4	1.8	Moderate
	Ibadan, Oyo State ⁶⁴	2010–2011	Population-based cross-sectional study	Urban	301	WHO-IDF 2006	49	–	4.7	Moderate
	Egbeda, Oyo State ⁶⁵	2002–2005	Population-based cross-sectional study	Rural	2000	WHO-IDF 2006	42.1	6.4	2.5	Moderate
	Ibadan, Oyo State ⁶⁶	1995	Population-based cross-sectional study	Urban	245	WHO 1985	62	4.8	2.8	Moderate
	Ido-Ekiti, Ekiti State ⁶⁷	2015	Population-based cross-sectional study	Rural	750	ADA 2012, WHO-IDF 2006	61.7	–	6.8	Moderate
	Ibadan, Oyo State ⁶⁸	1995	Population-based cross-sectional study	Urban	849	WHO 1985	40.8	4.4	0.8	High
Multizonal	Interstate ⁶⁹	1999	Population based	Mixed	856	WHO 1998	49.5	–	1.0	Moderate
	Interstate ⁷⁰	2012	Population-based cross-sectional study	Mixed	1595	RBG>11.1 mmol/L, self-report	55.9	–	3.3	High

*Represents T2DM hospital admissions; ADA 2003,¹⁸ WHO 1985,¹⁹ WHO 1998,²⁰ WHO-IDF 2006.¹⁶

†Represents mean age at death.

‡Represents case fatality rates (expressed as proportion of deaths from T2DM hospital admissions).

ADA, American Diabetes Association; FPG, fasting plasma glucose; IDF, International Diabetes Federation; RBG, random blood glucose; T2DM, type 2 diabetes mellitus; 2hr-PG, 2-hour postprandial glucose.

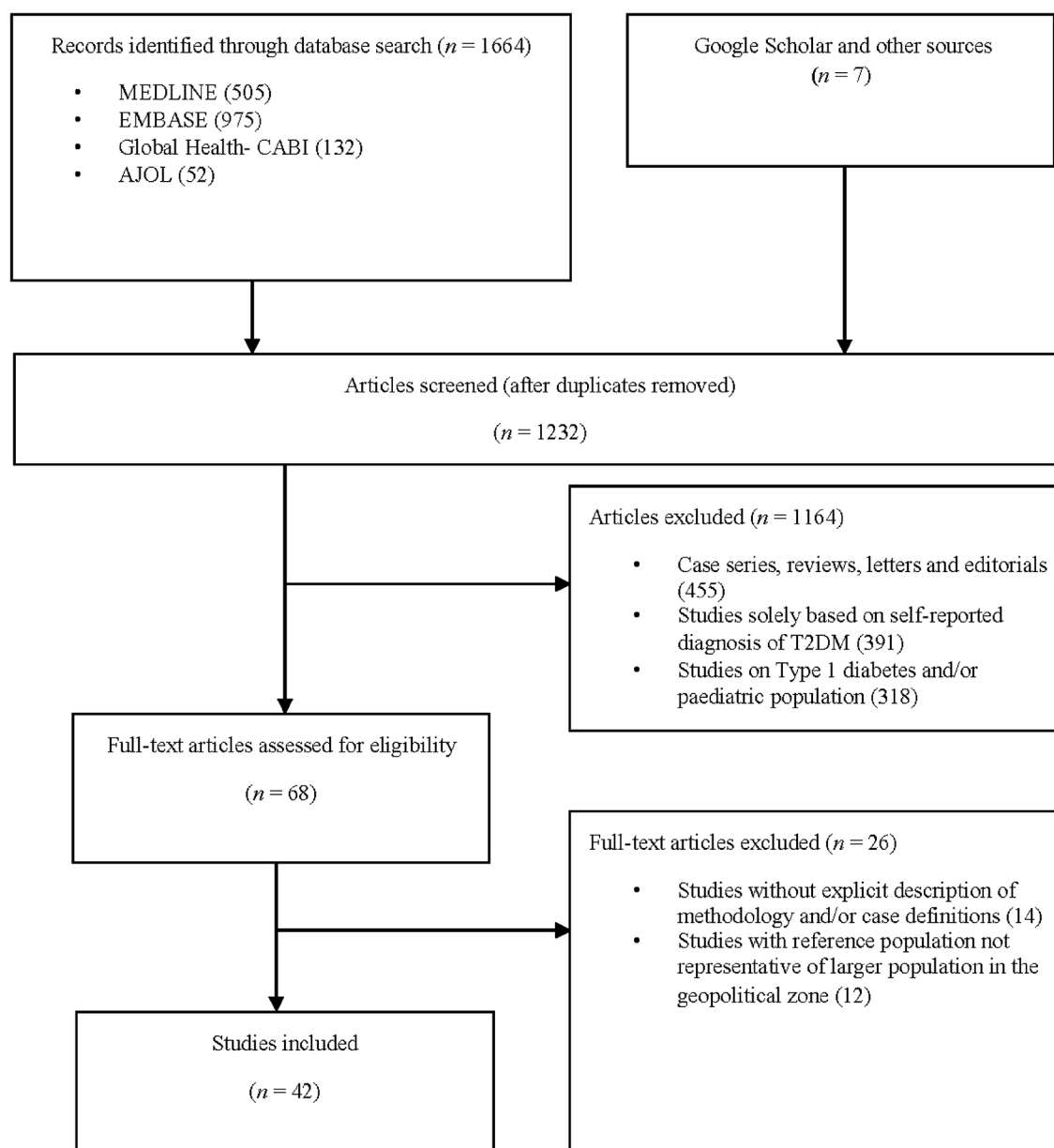


Figure 1 Flow chart of selection of T2DM studies in Nigeria. AJOL, Africa Journals Online; T2DM, type 2 diabetes mellitus.

and 6 were hospital based reporting on hospitalisations, complications and deaths from T2DM (table 2). Most studies (15) were conducted in the South-West region of Nigeria, followed by the South-East and South-South with 8 studies each. The North-West had four studies, North-Central three and North-East two. Two studies were conducted across multiple regions in the country. Study period ranged from 1988 to 2015, with 20 studies (47.6%) conducted after 2010. There were 23 studies (54.7%) conducted in urban settings. Excluding hospital-based studies, the total population included in the review was 91 320, with a mean age of 48.9 years (table 2). Of the 42 included studies, 4 (9.5%) met the criteria for high level of quality while 38 (90.5%) met the criteria for moderate level of quality. The risk of bias observed across studies included selection bias due to sampling

(33.3%, 14/42) and non-reporting of response rate (35.7%, 15/42). Measurement bias was minimal as all the included studies used standard diagnostic criteria to ascertain the prevalence of diabetes. However, the funnel plot was asymmetrical, with this suggestive of publication bias across selected studies (figure 2).

Outcome measures

Prevalence rates

The lowest prevalence of T2DM was 0.8% recorded in Ibadan, South-West Nigeria in 1995,⁶⁸ and Sokoto, North-West Nigeria in 2013,³⁶ both with mean ages 38.3 and 40.8 years, respectively. The highest prevalence rates of T2DM were reported among oil company workers in Port Harcourt in 2001 (26.3%, mean age 61.5 years)⁵⁰ and Uyo in 2010 (10.5%, mean age 49.8 years),⁴⁶ in

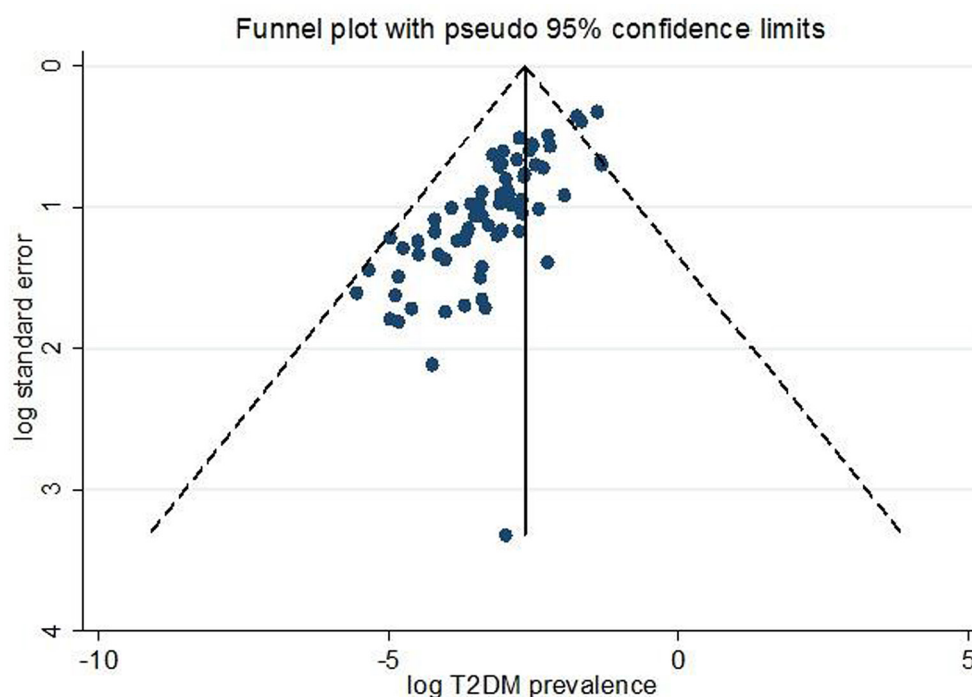


Figure 2 Funnel plot showing distribution of selected studies. T2DM, type 2 diabetes mellitus.

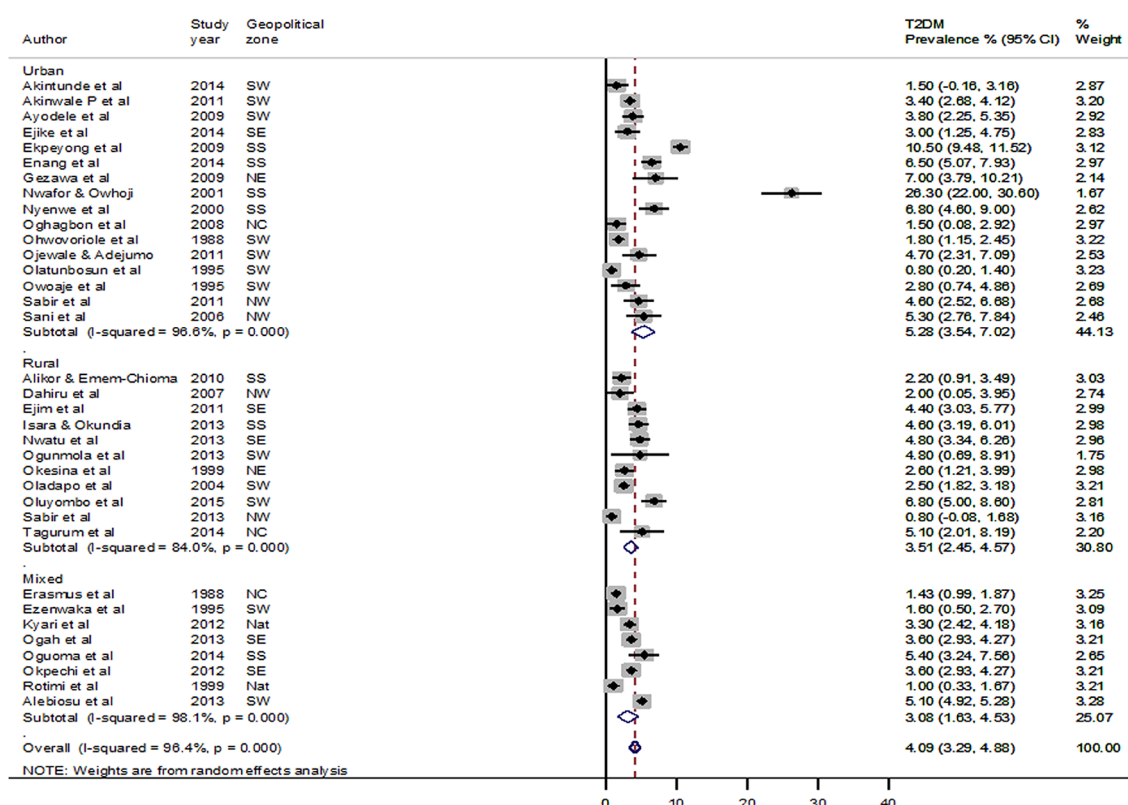


Figure 3 Pooled prevalence rate of T2DM in Nigeria. T2DM, type 2 diabetes mellitus.

**Table 3** Pooled prevalence rates of T2DM, IGT, IFG and mean FPG in Nigeria

Extracted data	All		Men		Women	
	Pooled estimate (95% CI)	I ² , p value	Pooled estimate (95% CI)	I ² , p value	Pooled estimate (95% CI)	I ² , p value
T2DM (%)	4.1 (3.3 to 4.9)	96.4%, p=0.000	4.4 (3.3 to 5.9)	92.9%, p=0.000	4.1 (3.1 to 5.1)	90.4%, p=0.000
Undiagnosed T2DM (%) [*]	39.4 (26.0 to 52.7)	92.5%, p=0.000	–	–	–	–
T2DM on treatment (%) [*]	32.7 (23.5 to 41.8)	44.2%, p=0.111	–	–	–	–
IGT (%)	10.0 (4.5 to 15.6)	98.0%, p=0.000	10.3 (0.7 to 19.9)	97.8%, p=0.000	11.9 (2.5 to 21.2)	97.4%, p=0.000
IFG (%)	5.8 (3.8 to 7.8)	93.4%, p=0.000	4.9 (2.6 to 7.2)	89.7%, p=0.000	4.8 (3.0 to 6.6)	85.1%, p=0.000
Mean FPG (mmol/L)	5.1 (4.9 to 5.4)	5.0%, p=0.395	4.6 (4.0 to 5.2)	10.0%, p=0.999	4.7 (4.0 to 5.3)	10.0%, p=1.000

^{*}Represents percentage of overall T2DM cases; there were no data to pool estimates separately for men and women.

I² represents the variation in pooled estimate attributable to heterogeneity.

p Value represents level of significance.

FPG, fasting plasma glucose; IFG, impaired fasting glucose; IGT, impaired glucose tolerance; T2DM, type 2 diabetes mellitus.

South–South Nigeria, which is possibly due to the higher socioeconomic statuses in these settings (table 2).

From all studies, the pooled crude prevalence of T2DM was 4.1% (95% CI 3.3% to 4.9%), with 4.4% (95% CI 3.3% to 5.9%) among men and 4.1% (95% CI 3.1% to 5.1%) among women. In the subgroup analysis, the prevalence was higher among urban dwellers at 5.3% (95% CI 3.5% to 7.0%), compared with 3.5% (95% CI 2.5% to 4.6%) among rural dwellers (figure 3, table 3).

The South–South region of Nigeria had the highest pooled prevalence of T2DM at 8.5% (95% CI 5.1% to 11.9%), followed by the North–East and South–East regions, at 4.6% (95% CI 0.3% to 8.8%) and 3.7% (95% CI 3.3% to 4.2%), respectively. The North–Central had the lowest pooled prevalence at 2.0% (95% CI 0.7% to 3.3%). Over the study period, the highest prevalence of T2DM was observed in the period 2000–2009 and 2010–2015 at 6.9% (95% CI 3.9% to 10.1%) and 4.0% (95% CI 3.3% to 4.7%), respectively. The pooled prevalence rates in the period 1985–1989 and 1990–1999 were 1.6% (95% CI 1.2% to 1.9%) and 1.4% (95% CI 0.8% to 2.1%), respectively. In the age group analysis, the highest prevalence was observed in the older age intervals of 60–69, 70–79 and 80+ years at 6.8% (95% CI 4.1% to 9.5%), 6.4% (95% CI 1.7% to 11.1%) and 9.9% (95% CI 2.7% to 17.2%), respectively (table 4).

Undiagnosed cases of T2DM, expressed as a percentage of all T2DM cases in each study, ranged from 7.8% in Uyo (South–South)⁴⁶ to 75% in Dakace village in Zaria (North–West),³⁴ with a pooled rate of 39.4% (95% CI 26.0% to 52.7%). T2DM cases on treatment, also expressed as a percentage of all T2DM cases in each study, ranged from 19.6% in Ido-Ekiti (South–West)⁶⁷ to 50% in Sokoto (North–West),³⁷ with a pooled rate of 32.7% (95% CI 23.5% to 41.8%) (table 3).

From all studies, prevalence of IGT ranged from 2.2% in Ibadan (South–West)⁶⁸ to 19.6% in Calabar (South–South),⁴⁸ and IFG from 1.1% in Umudike (South–East)³⁹ to 16.9% in Sokoto (North–West).³⁵ The pooled prevalence of IGT was 10.0% (95% CI 4.5% to 15.6%), with 10.3% (95% CI 0.7% to 19.9%) among men and 11.9% (95% CI 2.5% to 21.2%) among women. The pooled prevalence of IFG was 5.8% (95% CI 3.8% to 7.8%), with 4.9% (95% CI 2.6% to 7.2%) among men and 4.8% (95% CI 3.0% to 6.6%) among women (figures 4 and 5, and table 3).

The mean FPG concentration was not too different across studies ranging from 4.0 mmol/L in Port Harcourt (South–South)⁴⁷ to 5.9 mmol/L in Gindiri-Plateau (North–Central),³¹ with a pooled rate of 5.1 mmol/L (95% CI 4.9 to 5.4) (figure 6). The pooled mean FPG rates among men and women were also almost the same at 4.6 mmol/L (95% CI 4.0 to 5.2) and 4.7 (95% CI 4.0 to 5.3), respectively (table 3).

Hospitalisation, mortality and case fatality rates

Hospital data on T2DM were based on catchment population of the hospital. Crude hospital admission rate ranged from 23.9 to 763.8 per 100 000 population, with a pooled rate of 222.6 (95% CI 133.1 to 312.1) per 100 000 population. Hyperglycaemic emergencies (mainly diabetic ketoacidosis and hyperosmolar non-ketotic coma), diabetic foot, uncontrolled hypertension and stroke were the most common complications or indications of admission, with pooled rates at 36.1% (95% CI 13.9% to 58.4%), 19.6% (95% CI 12.3% to 26.9%), 16.7% (95% CI 13.4% to 20.1%) and 8.7% (95% CI 7.4% to 10.0%), respectively (table 5).

The crude mortality rate for T2DM ranged from 0.97 to 105.3 per 100 000 population. The overall mortality

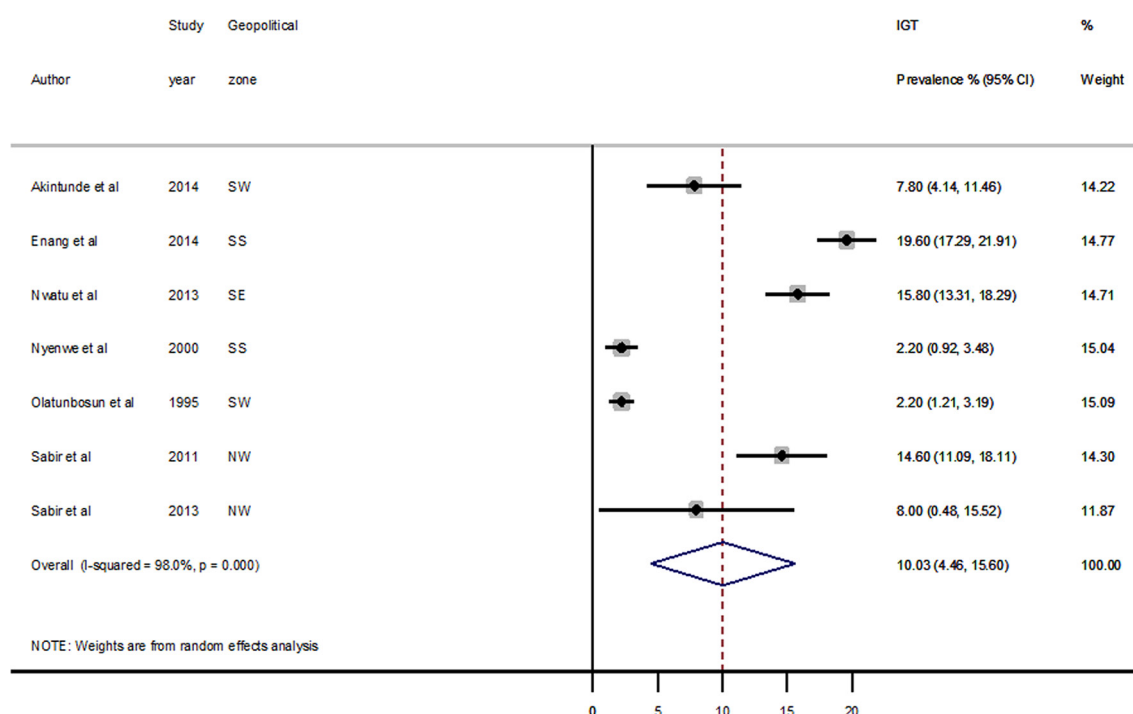
Table 4 Overview of subgroup meta-analysis of type 2 diabetes mellitus (T2DM) in Nigeria

Subgroup		T2DM prevalence % (95% CI)	I ² , p value
Setting	Urban	5.3 (3.5 to 7.0)	96.6%, p=0.000
	Rural	3.5 (2.5 to 4.6)	84.0%, p=0.000
	Mixed*	3.1 (1.6 to 4.5)	98.1%, p=0.000
Geopolitical zone	North-Central	2.0 (0.7 to 3.3)	62.4%, p=0.070
	North-East	4.6 (0.3 to 8.8)	83.5%, p=0.014
	North-West	3.0 (0.8 to 5.2)	84.4%, p=0.000
	South-East	3.7 (3.3 to 4.2)	0.0%, p=0.414
	South-South	8.5 (5.1 to 11.9)	96.8%, p=0.000
	South-West	3.2 (1.9 to 4.5)	96.8%, p=0.000
Year	1985–1989	1.6 (1.2 to 1.9)	0.0%, p=0.354
	1990–1999	1.4 (0.8 to 2.1)	54.3%, p=0.068
	2000–2009	6.9 (3.9 to 10.1)	97.3%, p=0.000
	2010–2015	4.0 (3.3 to 4.7)	90.1%, p=0.000
Age (years)	20–29	1.1 (0.3 to 1.9)	80.3%, p=0.000
	30–39	4.7 (2.9 to 6.6)	91.9%, p=0.000
	40–49	4.1 (3.1 to 5.1)	96.5%, p=0.000
	50–59	5.1 (3.5 to 6.7)	92.4%, p=0.000
	60–69	6.8 (4.1 to 9.5)	95.0%, p=0.000
	70–79	6.4 (1.7 to 11.1)	74.2%, p=0.021
	80+	9.9 (2.7 to 17.2)	16.1, p=0.275

*Study conducted in rural and urban settings with an overall estimate reported.

I² represents the variation in pooled estimate attributable to heterogeneity.

p Value represents level of significance.

**Figure 4** Pooled prevalence rate of IGT in Nigeria. IGT, impaired glucose tolerance.

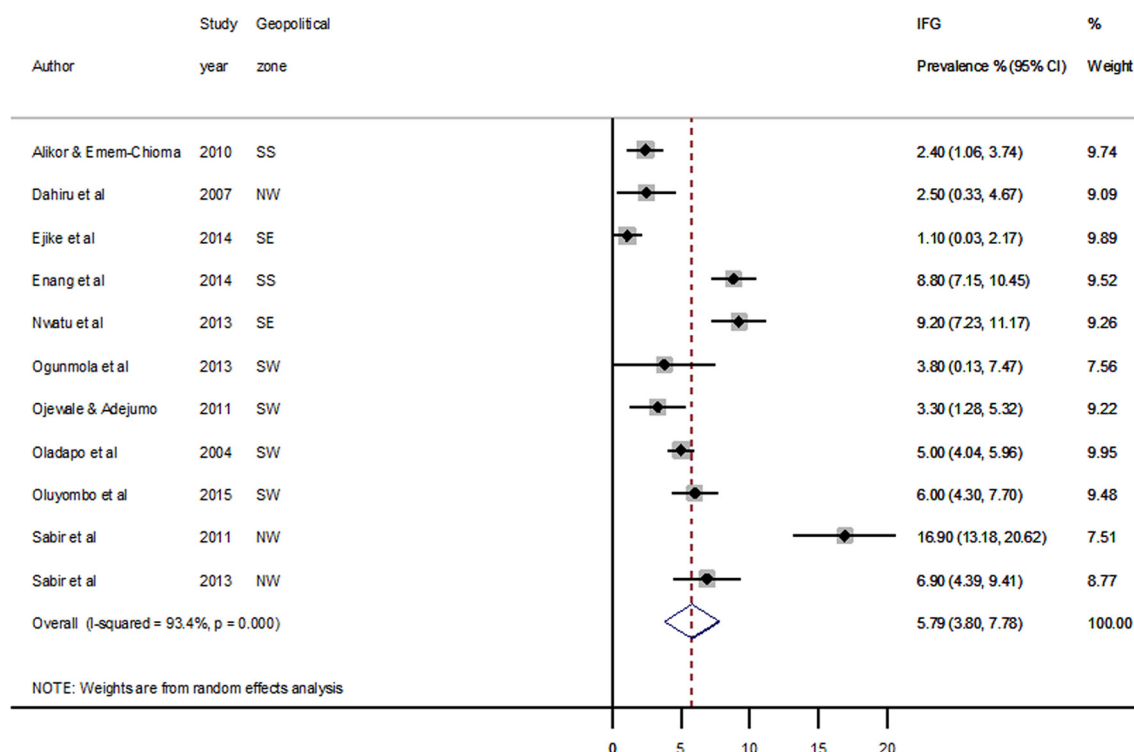


Figure 5 Pooled prevalence rate of IFG in Nigeria. IFG, impaired fasting glucose.

rate from all studies was 30.2 (95% CI 14.6 to 45.8) per 100 000 population, with a case fatality rate of 22.0% (95% CI 8.0% to 36.0%) (table 5). Assuming sociodemographic and epidemiological changes in Nigeria were fully

considered, this would amount to 54 297 (26 249–82 344) deaths in Nigeria in 2015 based on the UN population projections for Nigeria.

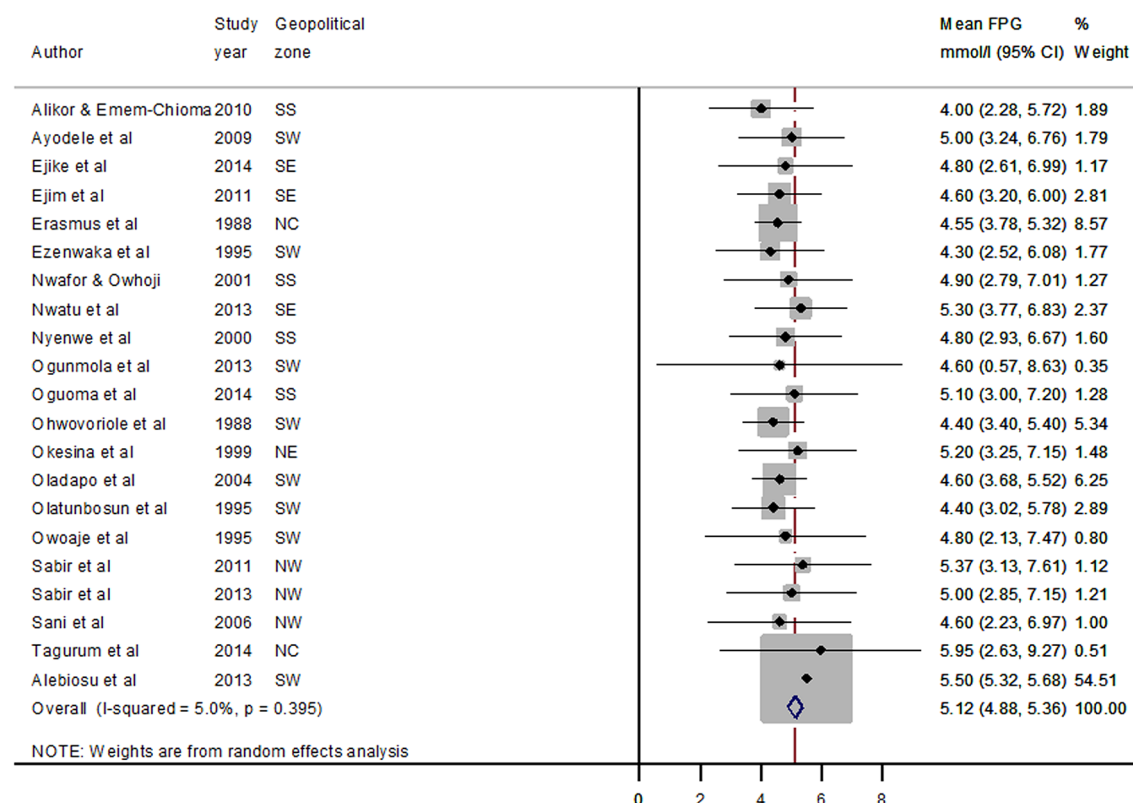


Figure 6 Pooled mean FPG concentration in Nigeria. FPG, fasting plasma glucose.

Table 5 Hospitalisation, mortality and case fatality rate of type 2 diabetes mellitus (T2DM) in Nigeria

Data		Pooled estimate (95% CI)	I ² , p value
Hospital admission rate* (per 100 000)		222.6 (133.1 to 312.1)	99.8%, p=0.000
Indication for hospital admissions† (%)	Hyperglycaemic emergencies	36.1 (13.9 to 58.4)	99.4%, p=0.000
	Diabetic foot	19.6 (12.3 to 26.9)	95.7%, p=0.000
	Uncontrolled hypertension	16.7 (13.4 to 20.1)	43.6%, p=0.170
	Stroke	8.7 (7.4 to 10.0)	0.0%, p=0.574
	Neuropathy	7.7 (2.3 to 13.2)	95.1%, p=0.000
	Sepsis	7.7 (5.3 to 10.1)	0.0%, p=0.732
	Hypoglycaemia	5.1 (0.9 to 9.3)	94.8%, p=0.000
	Nephropathy	4.2 (3.2 to 5.3)	27.0%, p=0.250
Mortality rate* (per 100 000)		30.2 (14.6 to 45.8)	99.2%, p=0.000
Case fatality rate‡ (%)		22.0 (8.0 to 36)	99.5%, p=0.000

*Estimate based on reference population of the hospital catchment area.

†Percentage of all T2DM hospital admissions.

‡Represents proportion of deaths from T2DM hospital admissions.

Meta-regression model

The meta-regression modelling, adjusted for study period and sample size, was applied to mean ages and crude prevalence rates from all studies, as these generated more data point. The modelling revealed an increasing prevalence with age ($p<0.05$) (table 6, figure 7).

Using the UN demographic projections for Nigeria, the age-adjusted prevalence rates of T2DM in Nigeria were 2.0% (95% CI 1.9% to 2.1%) and 5.7% (95% CI 5.5% to 5.8%) in 1990 and 2015, accounting for over 874 000 and 4.7 million T2DM cases, respectively, among persons aged 20–79 years. This represents over 440% increase in overall T2DM cases among persons aged 20–79 years between the two years (table 7).

DISCUSSION

With over 50% of studies conducted after 2010, our report suggests that research outputs on T2DM in Nigeria may be gradually increasing, although these may not be evenly distributed across the country as most studies (79%) originated from the Southern parts of the country. The evidence pool of diabetes, as reported by many experts, still remain limited across Nigeria and many parts of Africa.¹⁶

Our 1990 estimate is in keeping with the 1997 nationwide diabetes prevalence (2.2%) reported by Akinkugbe.¹² Although Abubakari and Bhopal reported a relatively higher diabetes prevalence (6.8%) in 2000,⁷¹ this may be expected as the seven studies included in their report were conducted among persons aged 40 years or older, and mainly in Southern parts of Nigeria, where we also reported higher prevalence rates in contrast to the Northern regions. However, our 2015 prevalence may further indicate an increasing trend in the prevalence of diabetes in Nigeria with over 440% increase in T2DM cases over the 1990 estimate. This is an important finding in this study, which is in congruence with the estimates reported by Guariguata and colleagues in the IDF global study, with a diabetes prevalence rates of 5% reported for Nigeria in 2013.⁸ The increasing rate of T2DM has also been documented across several African settings.^{1 3–5 7 72} Mbanya and colleagues specifically noted that diabetes prevalence is increasing in sub-Saharan Africa, with a regional prevalence of 2%–3% in mid-1990s increasing to about 4.6% in 2010.¹⁰ However, the 2015 Nigerian T2DM prevalence reported in this study is higher than the prevalence of adult diabetes reported in Cote d'Ivoire (2.3%), Ghana (1.9%) and Senegal (1.8%), according to

Table 6 Results of the meta-regression modelling

Prevalence	Coef.	Std. Err.	t	P>t	Upper 95% CI	Lower 95% CI
Age	0.0898737	0.0411097	2.19	0.032	0.0078621	0.1718853
Year	0.1253705	0.0630606	1.99	0.051	−0.000432	0.251173
_cons	−251.0127	126.3341	−1.99	0.051	−503.0424	1.017032

Note: REML estimate of between-study variance (tau2)=16.33.

% residual variation due to heterogeneity (I-squared_{res})=92.55%.

Proportion of between-study variance explained (Adj R-squared)=11.44%.

Joint test for all covariates in Model (F)=4.90.

With Knapp-Hartung modification Prob > F=0.0102.

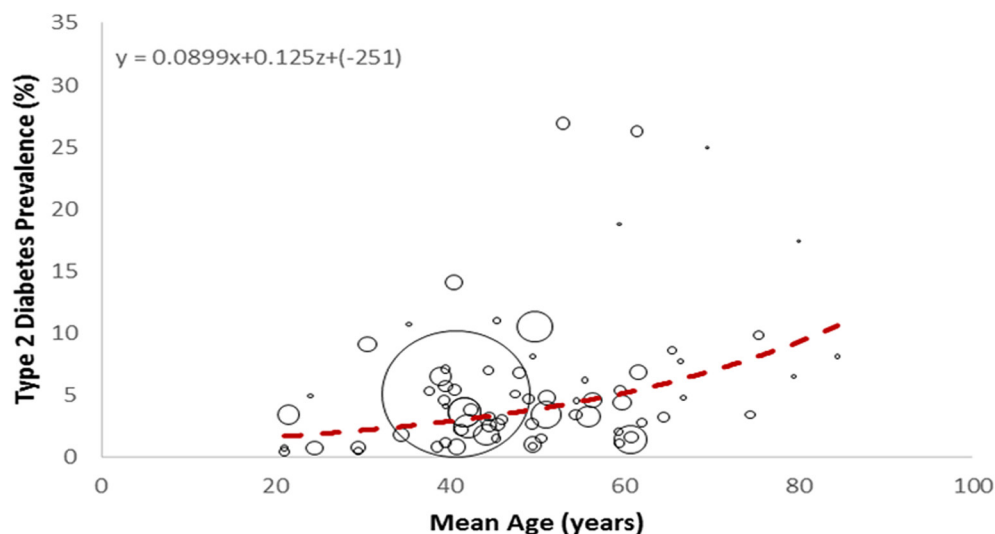


Figure 7 Meta-regression epidemiological modelling showing relationship between prevalence of T2DM and mean age of the population. T2DM, type 2 diabetes mellitus. Note: T2DM prevalence (y), age (x), year (z) and size of the bubble correspond to study sample size. Coefficients of 'x' and 'z' are '0.0899' and '0.125' for the meta-regressed line, with an intercept of '-251'.

the 2015 IDF atlas,⁶ suggesting a relatively higher burden in Nigeria compared with other West African countries.

Meanwhile, the mean country-wide FPG estimated in this study, to the best of our knowledge, is the first reported in Nigeria. At a mean FPG concentration of 5.1 mmol/L, many people across Nigeria may apparently be approaching the prediabetic states. This therefore may be suggestive of the high IGT and IFG prevalence rates reported in this study. The implication,

based on experts' reports, is that regions with relatively low diabetes prevalence but with fairly high prevalence of IGT and IFG may be at an early phase of a diabetes epidemic.⁷³ The sex distribution of our estimate is also consistent with many reports, with IGT affecting more women than men, and IFG vice versa.¹⁶ There is still no sufficient explanation for this sex difference, but increasing prevalence of diabetes observed among African women may be due to the relatively higher

Table 7 Age-adjusted prevalence rates and cases of type 2 diabetes mellitus (T2DM) in Nigeria in 1990 and 2015

Age group	1990			2015		
	Nigeria population (000s)	Prevalence* (%)	T2DM cases (000s)	Nigeria population (000s)	Prevalence* (%)	T2DM cases (000s)
20–24	8160.431	0.52	42.744	15 981.820	3.66	584.743
25–29	6920.907	0.97	67.361	14 051.040	4.11	577.259
30–34	5833.290	1.42	82.996	12 102.270	4.56	551.597
35–39	4876.116	1.87	91.295	9982.646	5.01	499.861
40–44	4140.621	2.32	96.137	7767.685	5.46	423.867
45–49	3579.784	2.77	99.207	6008.701	5.91	458.783
50–54	2949.801	3.22	95.007	4993.836	6.36	381.901
55–59	2373.829	3.67	87.127	4146.148	6.81	339.846
60–64	1861.811	4.12	76.703	3325.733	7.25	300.795
65–69	1373.048	4.57	62.739	2554.200	7.70	256.224
70–74	905.270	5.02	45.434	1821.521	8.15	208.264
75–79	499.574	5.47	27.318	1077.611	8.60	156.711
Total (age adjusted) 20–79 years	43 474.480	2.01	874.068	83 813.210	5.66	4739.851
Lower CI	–	1.88	817.321	–	5.50	4609.726
Upper CI	–	2.14	930.354	–	5.81	4869.547

*Estimate based on meta-regression epidemiological modelling adjusted for year and sample size from each study.

prevalence of overweight and obesity among women across many African settings,^{71 74} who have wrongly associated this with healthy living, and possibly been contented with the better social status it offered them.

Rapid urbanisation, as an important driver of the increasing burden of T2DM in Africa,¹⁰ was also confirmed in our report, with prevalence among urban dwellers well above the rural dwellers. Africa, and Nigeria in particular, is experiencing fastest rate of urbanisation globally, with over a third of the population currently residing in urban areas, and this is expected to increase to about 45% by 2025.^{75 76} This may also explain the higher T2DM prevalence in Southern Nigeria, a relatively urbanised region compared with the Northern parts, which is in fact further characterised by nomadic lifestyles. Age was another factor noted in our report, with higher prevalence rates observed in the older age groups. Experts have revealed a rising prevalence of diabetes with increasing age, particularly due to continued exposure to several other risks occasioned by prolonged life.^{10 77}

Our estimated mortality rate from T2DM in Nigeria is relatively lower compared with the overall rate (111.1 per 100 000 population) reported for the African region in the WHO global report.⁷ This may be due to the few data points on diabetes deaths in our study, and the fact that individual mortality rates were based on 'large' reference population of the hospital where the study was conducted. In the 2016 WHO diabetes profile, about 28 000 diabetes deaths were estimated in Nigeria, stating however that the estimates have high degree of uncertainty as there were no available national mortality data to compute these estimates.¹⁵ However, our estimates show hospital admissions (from complications) and case fatality rates were comparatively higher in Nigeria, with hyperglycaemic emergencies, diabetic foot and cardiovascular diseases being the most common indications. In Nigeria, there have been reports that many diabetes cases present to health facilities at advanced stages of the disease.¹⁴ Acute complications of diabetes, mainly diabetic ketoacidosis, hyperosmolar non-ketotic coma and hypoglycaemia, are frequent indications of hospital emergencies in Nigeria, with high mortalities recorded.⁵⁶ High numbers of undiagnosed cases and low treatment rates, as estimated in our study, may also be major factors responsible for the prevalent complications and high mortality rates. Recent reports within Nigeria show that undiagnosed cases of diabetes accounted for about 40% of the diabetes burden in the country.¹¹ According to IDF, about two million undiagnosed diabetes cases were estimated in Nigeria in 2013, with this responsible for over 40 000 deaths resulting from diabetes and its complications in the country.⁸ Personal health cost from diabetes, mostly out of pocket, may have also affected hospital visits and use of medications. The lack of a fully functional and equitable national health insurance scheme¹⁴ means many people with diabetes would prefer to stay at home, visit substandard facilities or patronise traditional herbal healers, due to high cost of treatment and medications,

only to present at an advanced stage of the disease to standard health facilities with widespread complications. Kirigia and colleagues estimated that the 7.1 million cases of diabetes reported in Africa in 2000 accounted for a regional economic loss of about 25.5 billion US\$, equivalent to about \$3633 per diabetic case.⁷⁸ The need for insulin and other medications was responsible for the bulk of the direct cost, accounting for about \$8.1 billion (\$1154/diabetic case).^{78 79}

While we attempted to provide population representative estimates of the burden of T2DM in Nigeria, we however could have been limited by a number of factors. First, retained studies were not evenly spread across various parts of Nigeria. Most studies selected were conducted in the Southern geopolitical zones of Nigeria, with the Northern zones having nine studies (21.4%). Data from many studies were also incomplete, as results of some studies, with explicit sampling strategy and study designs, were not always detailed. Besides, data points on age and sex-specific prevalence, including corresponding prevalence for urban and rural settings, were not always provided across studies. There were also sources of heterogeneity from study designs, measurement protocols and individual and population differences across selected studies. However, our selection and quality criteria may have excluded low-quality studies, and we conducted subgroup meta-analyses on selected studies to identify other sources of heterogeneity that may further aid the interpretation of results. There were few data points from hospital-based studies and representative population denominators were not provided. As hospital admissions and mortality rates were based on relatively larger catchment population of the hospital, an underestimation may not be ruled out. Finally, although we controlled for study period and sample population in our modelling, we are aware there could be uncertainties in our reported estimates of T2DM in Nigeria for 1990 and 2015, as varying population contexts, blood glucose measurements, case definitions and social determinants of health, beyond mean age of the population, are important factors that could have affected real-time trends. However, with 42 studies selected across all six geopolitical zones of Nigeria, and a total population of 91 320 included, our estimates may still point to a near-precise burden of T2DM in Nigeria.

Conclusion

Our findings suggest an increasing burden of T2DM in Nigeria with many persons currently undiagnosed, and few known cases on treatment. The rising burden of diabetes has presented huge cost to individuals, society and the Nigerian government. There is still need for more research on T2DM, including specific response to diabetes treatment and management, particularly in Northern Nigeria, where few researches have been conducted to date. We hope our findings may help towards improved research, control, treatment and policy response to diabetes in Nigeria.



Twitter Follow Davies Adeloye at @davyadeloye

Acknowledgements The authors thank the Covenant University Centre for Research, Innovation and Discovery (CUCRID) for the intellectual support during the conduct of this study.

Contributors DA conceptualised the study. DA, JOI and AA conducted the literature searches. JOI, AA and AVA extracted all data with oversight from DA. DA, NA and EOA performed all statistical analyses. DA and JOI drafted the paper. DA, AVA, AA, EOA and GO contributed to writing of the final version of the paper and checked the paper for important intellectual content.

Funding This research received no specific grant from any funding agency in the public, commercial or not-for-profit sectors

Competing interests None declared.

Provenance and peer review Not commissioned; externally peer reviewed.

Data sharing statement No additional data available.

Open Access This is an Open Access article distributed in accordance with the Creative Commons Attribution Non Commercial (CC BY-NC 4.0) license, which permits others to distribute, remix, adapt, build upon this work non-commercially, and license their derivative works on different terms, provided the original work is properly cited and the use is non-commercial. See: <http://creativecommons.org/licenses/by-nc/4.0/>

© Article author(s) (or their employer(s) unless otherwise stated in the text of the article) 2017. All rights reserved. No commercial use is permitted unless otherwise expressly granted.

REFERENCES

1. International Diabetes Federation. *Diabetes Atlas*. 1st ed. Brussels, Belgium: International Diabetes Federation, 2000.
2. International Diabetes Federation. *Diabetes Atlas*. 2nd ed. Belgium: International Diabetes Federation, 2003.
3. International Diabetes Federation. *Diabetes Atlas*. 3rd ed. Belgium: International Diabetes Federation, 2006.
4. Whiting DR, Guariguata L, Weil C, et al. IDF diabetes atlas: global estimates of the prevalence of diabetes for 2011 and 2030. *Diabetes Res Clin Pract* 2011;94:311–21.
5. International Diabetes Federation. *Diabetes Atlas*. 4th ed. Belgium: International Diabetes Federation, 2009.
6. International Diabetes Federation. *Diabetes Atlas*. 7th ed. Belgium: International Diabetes Federation, 2015.
7. World Health Organisation. Global report on diabetes. 2016 <http://who.int/diabetes/global-report/en/> (accessed 07 April 2016).
8. Guariguata L, Whiting DR, Hambleton I, et al. Global estimates of diabetes prevalence for 2013 and projections for 2035. *Diabetes Res Clin Pract* 2014;103:137–49.
9. Beran D, Yudkin JS. Diabetes care in sub-Saharan Africa. *Lancet* 2006;368:1689–95.
10. Mbanya JC, Motala AA, Sobngwi E, et al. Diabetes in sub-Saharan Africa. *Lancet* 2010;375:2254–66.
11. Ogbera AO, Ekpebegh C. Diabetes mellitus in Nigeria: the past, present and future. *World J Diabetes* 2014;5:905–11.
12. Akinkugbe OO. *Non-communicable diseases in Nigeria: national survey (Final Report) on hypertension, coronary heart disease, diabetes mellitus, haemoglobinopathies, G6PD deficiency and anaemia*. Lagos: Federal Ministry of Health and Social Services – National Expert Committee on Non-Communicable Diseases, 1997.
13. Onyemelukwe GC. *National survey of noncommunicable diseases (Southwest zone)*. Abuja: Federal Ministry of Health – National Expert Committee on Non-Communicable Diseases, 2003.
14. Chinenye S, Young E. State of Diabetes Care in Nigeria: a Review. *The Nigerian Health Journal* 2011;11:101–6.
15. World Health Organisation. *Nigeria- Diabetes country profiles*. Geneva, Switzerland: World Health Organization, 2016.
16. World Health Organisation. *Definition and diagnosis of diabetes mellitus and intermediate hyperglycemia: report of a WHO/IDF consultation*. Geneva, Switzerland: WHO, 2006.
17. Stroup DF, Berlin JA, Morton SC, et al. Meta-analysis of observational studies in epidemiology: a proposal for reporting. Meta-analysis of observational studies in Epidemiology (MOOSE) group. *JAMA* 2000;283:2008–12.
18. Gabir MM, Hanson RL, Dabelea D, et al. The 1997 American Diabetes Association and 1999 World Health Organization criteria for hyperglycemia in the diagnosis and prediction of diabetes. *Diabetes Care* 2000;23:1108–12.
19. World Health Organization. *Diabetes Mellitus: report of a WHO study group. Technical Report Series No.727* Geneva, Switzerland: WHO 1985.
20. Alberti KG, Zimmet PZ. Definition, diagnosis and classification of diabetes mellitus and its complications. Part 1: diagnosis and classification of diabetes mellitus provisional report of a WHO consultation. *Diabet Med* 1998;15:539–53.
21. Stanifer JW, Jing B, Tolan S, et al. The epidemiology of chronic kidney disease in sub-Saharan Africa: a systematic review and meta-analysis. *Lancet Glob Health* 2014;2:e174–e181.
22. Pai M, McCulloch M, Gorman JD, et al. Systematic reviews and meta-analyses: an illustrated, step-by-step guide. *Natl Med J India* 2004;17:86–95.
23. Guyatt GH, Rennie D. *Users' guides to the medical literature: a manual for evidence-based clinical practice*. Chicago: AMA Press, 2002.
24. Jüni P, Altman DG, Egger M. Systematic reviews in health care: assessing the quality of controlled clinical trials. *BMJ* 2001;323:42–6.
25. DerSimonian R, Laird N. Meta-analysis in clinical trials. *Control Clin Trials* 1986;7:177–88.
26. Higgins JP, Green S. *Cochrane Handbook for Systematic Reviews of Interventions*. Cochrane Collaboration: Oxford, 2011.
27. Adeloye D, Basquill C, Aderemi AV, et al. An estimate of the prevalence of hypertension in Nigeria: a systematic review and meta-analysis. *J Hypertens* 2015;33:230–42.
28. Adeloye D, Basquill C. Estimating the prevalence and awareness rates of hypertension in Africa: a systematic analysis. *PLoS One* 2014;9:e104300.
29. Erasmus RT, Fakeye T, Olukoga O, et al. Prevalence of diabetes mellitus in a Nigerian population. *Trans R Soc Trop Med Hyg* 1989;83:417–8.
30. Oghagbon EK, Okesina AB, Biliaminu SA. Prevalence of hypertension and associated variables in paid workers in Ilorin, Nigeria. *Niger J Clin Pract* 2008;11:342–6.
31. Tagurum YO, Okoh EO, Inalegwu E, et al. Non-communicable diseases: prevalence and risk factors among adults in a rural community in Plateau State, Nigeria. *Int J Biomed Res* 2015;6:228–34.
32. Gezawa ID, Puepet FH, Mubi BM, et al. Socio-demographic and anthropometric risk factors for type 2 diabetes in Maiduguri, North-Eastern Nigeria. *Sahel Medical Journal* 2015;18:1–7.
33. Okesina AB, Oparinde DP, Akindoyin KA, et al. Prevalence of some risk factors of coronary heart disease in a rural Nigerian population. *East Afr Med J* 1999;76:212–6.
34. Dahiru T, Jibo A, Hassan AA, et al. Prevalence of diabetes in a semi-urban community in Northern Nigeria. *Niger J Med* 2008;17:414–6.
35. Sabir AA, Isezuo SA, Ohwovorile AE. Dysglycaemia and its risk factors in an Urban Fulani population of Northern Nigeria. *West Afr J Med* 2011;30:325–30.
36. Sabir A, Ohwovorile A, Isezuo S, et al. Type 2 diabetes mellitus and its risk factors among the rural Fulanis of Northern Nigeria. *Ann Afr Med* 2013;12:217–22.
37. Sani MU, Wahab KW, Yusuf BO, et al. Modifiable cardiovascular risk factors among apparently healthy adult Nigerian population - a cross sectional study. *BMC Res Notes* 2010;3:11.
38. Aguocha BU, Ukpabi JO, Onyeonoro UU, et al. Pattern of diabetic mortality in a tertiary health facility in south-eastern Nigeria. *AJDM* 2013;21:14–16.
39. Ejike C, Uka NK, Nwachukwu SO. Diabetes and pre-diabetes in adult Nigerians: prevalence, and correlations of blood glucose concentrations with measures of obesity. *Afr J Biochem Res* 2015;9:55–60.
40. Ejim EC, Okafor CI, Emehel A, et al. Prevalence of cardiovascular risk factors in the middle-aged and elderly population of a Nigerian rural community. *J Trop Med* 2011;2011:1–6.
41. Ngwogu KO, Iek M, Ngwogu AC. Morbidity pattern of diabetic admissions at the Abia State University Teaching Hospital, Aba, Nigeria. *IJCR* 2012;1:49–53.
42. Nwatu CB, Ofoegbu EN, Unachukwu CN, et al. Prevalence of prediabetes and associated risk factors in a rural Nigerian community. *Int J Diab Dev Ctries* 2015;2015:1–7.
43. Ogah OS, Madukwe OO, Onyeonoro UU, et al. Cardiovascular risk factors and non-communicable diseases in Abia state, Nigeria: report of a community-based survey. *Int J Med Biomed Res* 2013;2:57–68.
44. Okpechi IG, Chukwuonyel Tiffin N, et al. Blood pressure gradients and cardiovascular risk factors in urban and rural populations in Abia State South Eastern Nigeria using the WHO STEPwise approach. *PLoS One* 2013;8:e73403.
45. U. Osuji C, A. Nzerem B, E. Dioka C, et al. Prevalence of diabetes mellitus in a group of women attending 'August meeting' at Naze South East Nigeria. *J Diabetes Mellitus* 2012;2:321–6.

46. Ekpenyong CE, Akpan UP, Ibu JO, *et al.* Gender and age specific prevalence and associated risk factors of type 2 diabetes mellitus in Uyo metropolis, South Eastern Nigeria. *Diabetologia Croatica* 2012;41:17–28.
47. Alikor CA, Emem-Chioma PC. Epidemiology of diabetes and impaired fasting glucose in a rural community of Nigerian Niger delta region. *Niger J Med* 2015;24:114–24.
48. Enang OE, Otu AA, Essien OE, *et al.* Prevalence of dysglycemia in Calabar: a cross-sectional observational study among residents of Calabar, Nigeria. *BMJ Open Diabetes Res Care* 2014;2:e000032.
49. Isara AR, Okundia PO. The burden of hypertension and diabetes mellitus in rural communities in southern Nigeria. *Pan Afr Med J* 2015;20.
50. Nwafor A, Owhoji A. Prevalence of diabetes mellitus among Nigerians in Port Harcourt correlates with socioeconomic status. *J Appl Sci Environ Mgmt* 2001;5:75–7.
51. Nyenwe EA, Odia OJ, Ihekwa AE, *et al.* Type 2 diabetes in adult Nigerians: a study of its prevalence and risk factors in Port Harcourt, Nigeria. *Diabetes Res Clin Pract* 2003;62:177–85.
52. Oguoma VM, Nwose EU, Skinner TC, *et al.* Prevalence of cardiovascular disease risk factors among a Nigerian adult population: relationship with income level and accessibility to CVD risks screening. *BMC Public Health* 2015;15:397.
53. Umoh VA, Otu AA, Enang OE, *et al.* The pattern of diabetic admissions in UCTH Calabar, South Eastern Nigeria: a five year review. *TNHJ* 2012;12:7–11.
54. Ogbera O. Burden of diabetic illness in an urban hospital in Nigeria. *Trop Doct* 2007;37:153–4.
55. Ajayi EA, Ajayi AO. Pattern and outcome of diabetic admissions at a federal medical center: a 5-year review. *Ann Afr Med* 2009;8:271–5.
56. Ogbera AO, Chinenye S, Onyekwere A, *et al.* Prognostic indices of diabetes mortality. *Ethn Dis* 2007;17:721–5.
57. Akintunde AA, Salawu AA, Opadijo OG. Prevalence of traditional cardiovascular risk factors among staff of Ladoke Akintola University of Technology, Ogbomoso, Nigeria. *Niger J Clin Pract* 2014;17:750–5.
58. Pheabian Akinwale O, John Oyefara L, Adejoh P, *et al.* Survey of hypertension, Diabetes and Obesity in three Nigerian Urban Slums. *Iran J Public Health* 2013;42:972–9.
59. Alebiosu OC, Familoni OB, Ogunsemi OO, *et al.* Community based diabetes risk assessment in ogun state, Nigeria (World Diabetes Foundation project 08-321). *Indian J Endocrinol Metab* 2013;17:653–8.
60. Ayodele OE, Okunola OO, Afolabi MO, *et al.* Prevalence of hypertension, diabetes and chronic kidney disease in participants of the 2009 World Kidney Day screening exercise in Southwest Nigeria. *HKJN* 2011;13:55–63.
61. Ezenwaka CE, Akanji AO, Akanji BO, *et al.* The prevalence of insulin resistance and other cardiovascular disease risk factors in healthy elderly southwestern Nigerians. *Atherosclerosis* 1997;128:201–11.
62. Ogunmola OJ, Olaifa AO, Oladapo OO, *et al.* Prevalence of cardiovascular risk factors among adults without obvious cardiovascular disease in a rural community in Ekiti State, Southwest Nigeria. *BMC Cardiovasc Disord* 2013;13:89.
63. Ohwovoriole AE, Kuti JA, Kabiawu SI. Casual blood glucose levels and prevalence of undiscovered diabetes mellitus in Lagos Metropolis Nigerians. *Diabetes Res Clin Pract* 1988;4:153–8.
64. Ojewale LY, Adejumo PO. Type 2 Diabetes Mellitus and impaired fasting blood glucose in Urban South Western Nigeria. *Int J Diabetes & Metab* 2012;21:9–12.
65. Oladapo OO, Salako L, Sodiq O, *et al.* A prevalence of cardiometabolic risk factors among a rural Yoruba south-western Nigerian population: a population-based survey. *Cardiovasc J Afr* 2010;21:26–31.
66. Owoaje EE, Rotimi CN, Kaufman JS, *et al.* Prevalence of adult diabetes in Ibadan, Nigeria. *East Afr Med J* 1997;74:299–302.
67. Oluyombo R, Olamoyegun MA, Olaifa O, *et al.* Cardiovascular risk factors in semi-urban communities in southwest Nigeria: patterns and prevalence. *J Epidemiol Glob Health* 2015;5:167–74.
68. Olatunbosun ST, Ojo PO, Fineberg NS, *et al.* Prevalence of diabetes mellitus and impaired glucose tolerance in a group of urban adults in Nigeria. *J Natl Med Assoc* 1998;90:293–301.
69. Rotimi CN, Cooper RS, Okosun IS, *et al.* Prevalence of diabetes and impaired glucose tolerance in Nigerians, Jamaicans and US blacks. *Ethn Dis* 1999;9:190–200.
70. Kyari F, Tafida A, Sivasubramaniam S, *et al.* Prevalence and risk factors for diabetes and diabetic retinopathy: results from the Nigeria national blindness and visual impairment survey. *BMC Public Health* 2014;14:1299.
71. Abubakari AR, Bhopal RS. Systematic review on the prevalence of diabetes, overweight/obesity and physical inactivity in Ghanaians and Nigerians. *Public Health* 2008;122:173–82.
72. Wild S, Roglic G, Green A, *et al.* Global prevalence of diabetes: estimates for the year 2000 and projections for 2030. *Diabetes Care* 2004;27:1047–53.
73. Mbanya JC, Kengne AP, Assah F. Diabetes care in Africa. *Lancet* 2006;368:1628–9.
74. Ogbera AO. Prevalence and gender distribution of the metabolic syndrome. *Diabetol Metab Syndr* 2010;2:1.
75. World Bank. *World development report*. New York: Oxford University Press for the World Bank, 1993.
76. United Nations. World Population Prospects, the 2010 Revision: definition of regions. 2012 <http://esa.un.org/unpd/wpp/Excel-Data/definition-of-regions.htm> (accessed 24 July 2012).
77. Aspray TJ, Unwin N. Diabetes in sub-Saharan Africa. *Adv Exp Med Biol* 2001;498:21–6.
78. Kirigia JM, Sambo HB, Sambo LG, *et al.* Economic burden of diabetes mellitus in the WHO African region. *BMC Int Health Hum Rights* 2009;9:6.
79. Mbanya JC, Mbanya D. Diabetes cost in sub-Saharan Africa. *J Cardiovasc Risk* 2003;10:191–3.

BMJ Open

Estimating the prevalence, hospitalisation and mortality from type 2 diabetes mellitus in Nigeria: a systematic review and meta-analysis

Davies Adeloye, Janet O Ige, Adewale V Aderemi, Ngozi Adeleye, Emmanuel O Amoo, Asa Auta and Gbolahan Oni

BMJ Open 2017 7:

doi: 10.1136/bmjopen-2016-015424

Updated information and services can be found at:
<http://bmjopen.bmj.com/content/7/5/e015424>

These include:

References

This article cites 63 articles, 4 of which you can access for free at:
<http://bmjopen.bmj.com/content/7/5/e015424#BIBL>

Open Access

This is an Open Access article distributed in accordance with the Creative Commons Attribution Non Commercial (CC BY-NC 4.0) license, which permits others to distribute, remix, adapt, build upon this work non-commercially, and license their derivative works on different terms, provided the original work is properly cited and the use is non-commercial. See: <http://creativecommons.org/licenses/by-nc/4.0/>

Email alerting service

Receive free email alerts when new articles cite this article. Sign up in the box at the top right corner of the online article.

Topic Collections

Articles on similar topics can be found in the following collections
[Diabetes and Endocrinology](#) (379)

Notes

To request permissions go to:
<http://group.bmj.com/group/rights-licensing/permissions>

To order reprints go to:
<http://journals.bmj.com/cgi/reprintform>

To subscribe to BMJ go to:
<http://group.bmj.com/subscribe/>