

Central Lancashire Online Knowledge (CLoK)

| | |
|----------|--|
| Title | SCOPE: SCUBA-2 Continuum Observations of Pre-protostellar Evolution – Survey Description and Compact Source Catalogue |
| Type | Article |
| URL | https://clok.uclan.ac.uk/id/eprint/26454/ |
| DOI | https://doi.org/10.1093/mnras/stz574 |
| Date | 2019 |
| Citation | Eden, D J, Liu, Tie, Kim, Kee-Tae, Juvela, M, Liu, S -Y, Tatematsu, K, Di Francesco, J, Wang, K, Wu, Y et al (2019) SCOPE: SCUBA-2 Continuum Observations of Pre-protostellar Evolution – Survey Description and Compact Source Catalogue. Monthly Notices of the Royal Astronomical Society, 485 (2). pp. 2895-2908. ISSN 0035-8711 |
| Creators | Eden, D J, Liu, Tie, Kim, Kee-Tae, Juvela, M, Liu, S -Y, Tatematsu, K, Di Francesco, J, Wang, K, Wu, Y, Thompson, M A, Fuller, G A, Li, Di, Ristorcelli, I, Kang, Sung-ju, Hirano, N, Johnstone, D, Lin, Y, He, J H, Koch, P M, Sanhueza, Patricio, Qin, S -L, Zhang, Q, Goldsmith, P F, Evans, N J, Yuan, J, Zhang, C -P, White, G J, Choi, Minho, Won Lee, Chang, Toth, L V, Mairs, S, Yi, H -W, Tang, M, Soam, A, Peretto, N, Samal, M R, Fich, M, Parsons, H, Malinen, J, Bendo, G J, Rivera-Ingraham, A, Liu, H -L, Wouterloot, J, Li, P S, Qian, L, Rawlings, J, Rawlings, M G, Feng, S, Wang, B, Li, Dalei, Liu, M, Luo, G, Marston, A P, Pattle, K M, Pelkonen, V -M, Rigby, A J, Zahorecz, S, Zhang, G, Bögnér, R, Aikawa, Y, Akhter, S, Alina, D, Bell, G, Bernard, J -P, Blain, A, Bronfman, L, Byun, D -Y, Chapman, S, Chen, H -R, Chen, M, Chen, W -P, Chen, X, Chen, Xuepeng, Chrysostomou, A, Chu, Y -H, Chung, E J, Cornu, D, Cosentino, G, Cunningham, M R, Demyk, K, Drabek-Maunder, E, Doi, Y, Eswaraiah, C, Falgarone, E, Fehér, O, Fraser, H, Friberg, P, Garay, G, Ge, J X, Gear, W K, Greaves, J, Guan, X, Harvey-Smith, L, Hasegawa, T, He, Y, Henkel, C, Hirota, T, Holland, W, Hughes, A, Jarken, E, Ji, T -G, Jimenez-Serra, I, Kang, Miju, Kawabata, K S, Kim, Gwanjeong, Kim, Jungha, Kim, Jongsoo, Kim, S, Koo, B -C, Kwon, Woojin, Kuan, Y -J, Lacaille, K M, Lai, S -P, Lee, C F, Lee, J -E, Lee, Y -U, Li, H, Lo, N, Lopez, J A P, Lu, X, Lyo, A -R, Mardones, D, McGehee, P, Meng, F, Montier, L, Montillaud, J, Moore, T J T, Morata, O, Moriarty-Schieven, G H, Ohashi, S, Pak, S, Park, Geumsook, Paladini, R, Pech, G, Qiu, K, Ren, Z -Y, Richer, J, Sakai, T, Shang, H, Shinnaga, H, Stamatellos, Dimitris, Tang, Y -W, Traficante, A, Vastel, C, Viti, S, Walsh, A, Wang, H, Wang, J, Ward-Thompson, Derek, Whitworth, A, Wilson, C D, Xu, Y, Yang, J, Yuan, Y -L, Yuan, L, Zavagno, A, Zhang, C, Zhang, G, Zhang, H -W, Zhou, C, Zhou, J, Zhu, L and Zuo, P |

It is advisable to refer to the publisher's version if you intend to cite from the work.
<https://doi.org/10.1093/mnras/stz574>

For information about Research at UCLan please go to <http://www.uclan.ac.uk/research/>

All outputs in CLoK are protected by Intellectual Property Rights law, including Copyright law. Copyright, IPR and Moral Rights for the works on this site are retained by the individual authors and/or other copyright owners. Terms and conditions for use of this material are defined in the <http://clok.uclan.ac.uk/policies/>



SCOPE: SCUBA-2 Continuum Observations of Pre-protostellar Evolution – survey description and compact source catalogue

D. J. Eden^{1,2}, Tie Liu^{3,4}, Kee-Tae Kim³, M. Juvela⁵, S.-Y. Liu⁶, K. Tatematsu⁷, J. Di Francesco^{8,9}, K. Wang¹⁰, Y. Wu¹¹, M. A. Thompson², G. A. Fuller¹², Di Li^{13,14}, I. Ristorcelli¹⁵, Sung-ju Kang³, N. Hirano⁶, D. Johnstone^{8,9}, Y. Lin¹⁶, J. H. He^{17,18,19}, P. M. Koch⁶, Patricio Sanhueza⁷, S.-L. Qin²⁰, Q. Zhang²¹, P. F. Goldsmith²², N. J. Evans, II^{3,23}, J. Yuan¹³, C.-P. Zhang¹³, G. J. White^{24,25}, Minho Choi³, Chang Won Lee^{3,26}, L. V. Toth^{27,28}, S. Mairs⁴, H.-W. Yi²⁹, M. Tang²⁰, A. Soam^{3,30}, N. Peretto³¹, M. R. Samal^{32,33}, M. Fich³⁴, H. Parsons⁴, J. Malinen³⁵, G. J. Bendo¹², A. Rivera-Ingraham³⁶, H.-L. Liu^{37,38}, J. Wouterloot⁴, P. S. Li³⁹, L. Qian¹³, J. Rawlings⁴⁰, M. G. Rawlings⁴, S. Feng⁴¹, B. Wang¹³, Dalei Li⁴², M. Liu¹³, G. Luo¹³, A. P. Marston⁴³, K. M. Pattle⁴⁴, V.-M. Pelkonen^{5,45}, A. J. Rigby³¹, S. Zahorecz^{46,47}, G. Zhang¹³, R. Bögner²⁷, Y. Aikawa⁴⁸, S. Akhter⁴⁹, D. Alina⁵⁰, G. Bell⁴, J.-P. Bernard¹⁵, A. Blain⁵¹, L. Bronfman¹⁹, D.-Y. Byun³, S. Chapman⁵², H.-R. Chen⁵³, M. Chen⁸, W.-P. Chen³², X. Chen⁵⁴, Xuepeng Chen⁵⁵, A. Chrysostomou⁵⁶, Y.-H. Chu⁶, E.J. Chung³, D. Cornu⁴⁵, G. Cosentino⁴⁰, M. R. Cunningham⁴⁹, K. Demyk¹⁵, E. Drabek-Maunder³¹, Y. Doi⁵⁷, C. Eswaraiah⁵³, E. Falgarone⁵⁸, O. Fehér^{27,59}, H. Fraser²⁴, P. Friberg⁴, G. Garay¹⁹, J. X. Ge¹⁹, W. K. Gear³¹, J. Greaves³¹, X. Guan⁶⁰, L. Harvey-Smith^{49,61}, T. Hasegawa⁷, Y. He, C. Henkel^{16,62}, T. Hirota⁷, W. Holland⁶³, A. Hughes¹⁵, E. Jarken, T.-G. Ji²⁹, I. Jimenez-Serra⁶⁴, M. Kang³, K. S. Kawabata^{65,66}, Gwanjeong Kim⁷, Jungha Kim²⁹, Jongsoo Kim³, S. Kim³, B.-C. Koo⁶⁷, Woojin Kwon^{3,68}, Y.-J. Kuan⁶⁹, K. M. Lacaille^{52,70}, S.-P. Lai^{6,53}, C. F. Lee⁶, J.-E. Lee²⁹, Y.-U. Lee³, H. Li, N. Lo¹⁹, J. A. P. Lopez⁴⁹, X. Lu⁷, A.-R. Lyo³, D. Mardones¹⁹, P. McGehee⁷¹, F. Meng⁶⁰, L. Montier¹⁵, J. Montillaud⁴⁵, T. J. T. Moore¹, O. Morata⁶, G. H. Moriarty-Schieven⁸, S. Ohashi⁷, S. Pak²⁹, Geumsook Park³, R. Paladini⁷¹, G. Pech⁶, K. Qiu⁷², Z.-Y. Ren¹³, J. Richer⁷³, T. Sakai⁷⁴, H. Shang⁶, H. Shinnaga⁷⁵, D. Stamatellos⁷⁶, Y.-W. Tang⁶, A. Traficante⁷⁷, C. Vastel¹⁵, S. Viti⁴⁰, A. Walsh⁷⁸, H. Wang⁵⁵, J. Wang⁵⁴, D. Ward-Thompson⁷⁶, A. Whitworth³¹, C.D. Wilson⁷⁰, Y. Xu⁵⁵, J. Yang⁵⁵, Y.-L. Yuan²³, L. Yuan¹³, A. Zavagno⁷⁹, C. Zhang²⁰, G. Zhang¹³, H.-W. Zhang¹¹, C. Zhou⁵⁵, J. Zhou, L. Zhu¹³ and P. Zuo¹³

Affiliations are listed at the end of the paper

Accepted 2019 February 22. Received 2019 February 8; in original form 2018 October 18

ABSTRACT

We present the first release of the data and compact-source catalogue for the JCMT Large Program SCUBA-2 Continuum Observations of Pre-protostellar Evolution (SCOPE). SCOPE

* E-mail: D.J.Eden@ljmu.ac.uk

consists of 850 μm continuum observations of 1235 *Planck* Galactic Cold Clumps (PGCCs) made with the Submillimetre Common-User Bolometer Array 2 on the James Clerk Maxwell Telescope. These data are at an angular resolution of 14.4 arcsec, significantly improving upon the 353 GHz resolution of *Planck* at 5 arcmin, and allowing for a catalogue of 3528 compact sources in 558 PGCCs. We find that the detected PGCCs have significant sub-structure, with 61 per cent of detected PGCCs having three or more compact sources, with filamentary structure also prevalent within the sample. A detection rate of 45 per cent is found across the survey, which is 95 per cent complete to *Planck* column densities of $N_{\text{H}_2} > 5 \times 10^{21} \text{ cm}^{-2}$. By positionally associating the SCOPE compact sources with young stellar objects, the star formation efficiency, as measured by the ratio of luminosity to mass, in nearby clouds is found to be similar to that in the more distant Galactic Plane, with the column density distributions also indistinguishable from each other.

Key words: surveys – stars: formation – ISM: clouds – submillimetre: ISM.

1 INTRODUCTION

The *Planck* survey, with its primary goal of mapping the cosmic microwave background, covered the thermal emission from dust of $\sim 14 \text{ K}$ at wavelengths of 350, 550, and 850 μm . In the process of removing local, Galactic emission, a catalogue of 13 188 *Planck* Galactic cold clumps (PGCCs) was compiled (Planck Collaboration XXIII 2011a, Planck Collaboration XXVIII 2016). By comparing the column densities and velocity widths of such clumps and those containing active star formation, the PGCCs were found to be significantly more quiescent and less evolved (Wu et al. 2012; Liu, Wu & Zhang 2013). The apparent quiescent nature of PGCCs makes them a valuable sample for studying the earliest stages of star formation, especially since they appear to have conditions suitable for star formation, with low dust temperatures of 6–20 K (Planck Collaboration XXVIII 2016). CO clumps have been detected towards PGCCs (e.g. Liu et al. 2013; Meng, Wu & Liu 2013; Parikka et al. 2015; Zhang et al. 2016; Fehér et al. 2017), as well as detections of line emission from dense gas tracers (Yuan et al. 2016). There can be, however, low levels of active star formation within PGCCs (Tóth et al. 2014; Liu et al. 2015; Tang et al. 2018; Yi et al. 2018; Zhang et al. 2018).

A large sample of pre-stellar cores and clumps needs to be studied to understand the evolution of cores and clumps after the formation of a young stellar object (YSO). In support of the effort to collect a large sample of pre- and protostellar cores and clumps, we present the SCUBA-2 Continuum Observations of Pre-protostellar Evolution Large Program (SCOPE). The project aims to test the earliest stages of star formation by observing 1235 PGCCs with the wide-field sub-mm bolometer camera, the Submillimetre Common-User Bolometer Array 2 (SCUBA-2; Holland et al. 2013) at the 850 μm wavelength beam size of 14.4 arcsec on the James Clerk Maxwell Telescope (JCMT). By observing with SCUBA-2 in the 850 μm continuum, matching the frequency of the *Planck* 353 GHz band, we can significantly improve over the 5 arcmin resolution of the *Planck* observations of PGCCs. The 5 arcmin resolution of *Planck* is prohibitive in that it hinders the positional cross-matching of higher resolution catalogues of YSOs (e.g. Wright et al. 2010; Gutermuth & Heyer 2015; Marton et al. 2016) and also does not reveal the highly structured nature of the PGCCs (Juvela et al. 2012; Liu, Wu & Zhang 2012).

The resolution of SCUBA-2 at 850 μm resolves PGCCs at 1.5 and 0.5 kpc to scales of 0.1 and 0.03 pc, respectively, the typical size of star-forming cores and clumps (e.g. Könyves et al. 2015), with 56 per cent and 43 per cent of sources falling within these distances, respectively (Planck Collaboration XXVIII 2016). It is important

to resolve individual cores in the PGCCs, especially because of the close connection between the core mass spectrum and the stellar IMF (e.g. Simpson, Nutter & Ward-Thompson 2008; Könyves et al. 2015; Montillaud et al. 2015),

The SCOPE survey was awarded 300 h in the JCMT weather bands 3 and 4, which correspond to sky opacity values of $\tau_{225} = 0.08\text{--}0.2$. Observations began with three periods of pilot observations occurring in 2014 September, and continued from 2015 December until 2017 July. SCUBA-2 does observe the 450 μm band simultaneously with the 850 μm band, but the weather bands available to SCOPE do not allow for reliable photometric calibration to be made on these shorter wavelength data.

1.1 SCOPE science goals

As previously mentioned, the *Planck* survey mapped the entire sky therefore PGCCs cover all Galactic longitudes and latitudes, from the Galactic Plane to high-latitude clouds. Previous works suggest that the Galaxy’s spiral arms do not have much of an impact on star formation, other than collecting the source material together (Eden et al. 2012, 2013; Moore et al. 2012). Understanding star formation out of the Galactic Plane, however, is restricted to nearby clouds in the Gould’s Belt (e.g. Ward-Thompson et al. 2007; André et al. 2010). Some clouds at higher latitudes show signs of star formation (e.g. McGehee 2008; Malinen et al. 2014; Kerp, Lenz & Röhser 2016). Hence, high-latitude clouds could be contributing to Galactic star formation, both at present and in the future by providing source material for fresh star formation. Indeed, gas at high latitudes could be a part of a Galactic fountain, where gas and dust is expelled into the Galactic halo by supernovae and stellar winds (Bregman 1980). This material would then fall back to the Galactic Plane, cooling and condensing into atomic clouds, with observations detecting H I high-latitude clouds (Röhser et al. 2016b). These clouds then fall back on to the Plane, replenishing the reservoir for star formation (Putman, Peek & Joungh 2012). In this regard, these clouds would also contain some molecular material (Magnani & Smith 2010; Röhser et al. 2016a) and dust (Planck Collaboration XXIV 2011b) therefore SCOPE is important in quantifying the amount of dense gas at high latitudes and to see if it has the same star formation efficiency as in the Plane.

Images of the dust-continuum emission found that the ISM and molecular clouds are highly filamentary with the vast majority of clumps and cores lying on, or in, these structures (André et al. 2010, 2014; Molinari et al. 2010). The formation mechanism of filaments is disputed, with global gravitational collapse

(Hartmann & Burkert 2007), large-scale colliding flows in the cloud-formation process (Heitsch & Hartmann 2008), and decaying supersonic turbulence (Padoan et al. 2007) being suggested as possible formation mechanisms. Observational evidence, however, has been unable to discriminate between these possibilities. The fact that most cores, both pre- and protostellar, are found on these filaments implies that the filamentary structures are crucial to their formation, regardless of how the filaments form. Follow-up studies have also found PGCCs to be filamentary (e.g. Rivera-Ingraham et al. 2016; Kim et al. 2017), and the increased resolution of the SCOPE survey allows the determination of the detection rate of filaments and the fragmentation of filaments into clumps and cores. Such detection of filaments, and the placement of clumps/cores along them, will allow for a greater understanding of the role that they play in star formation (Juvela et al. 2018b; Liu et al. 2018a,b).

Using the method of Sadavoy et al. (2013), we can combine *Herschel Space Observatory* data and simultaneously derive the dust temperature, column density, and dust emissivity spectral index. By calculating these values, we can study how dust properties vary between different Galactic environments and between sources in different stages of the star formation process, with some of the sources in this study already addressed by Juvela et al. (2018a,b).

Multiple papers have already been published using the SCOPE data, namely the maps and images (Liu et al. 2016; Kim et al. 2017; Tatematsu et al. 2017; Juvela et al. 2018a; Juvela et al. 2018b; Liu et al. 2018a,b; Tang et al. 2018; Yi et al. 2018; Zhang et al. 2018).

The layout of this paper is as follows: Section 2 introduces the observing strategy and complementary observations and surveys. Section 3 describes the data and the data reduction, whilst Section 4 includes the compact source extraction. Sections 5 and 6 describe data access and results, respectively. Finally, Section 7 provides summary and final conclusions.

2 SCOPE OBSERVING STRATEGY

The SCOPE selection of PGCCs was chosen randomly from the full PGCC sample to sample varying Galactic environments (Liu et al. 2018a). Sources from the catalogue of PGCCs were excluded if they had already been observed at the JCMT with SCUBA-2 at an rms sensitivity of at least 6 mJy beam^{-1} . These observations formed part of the JCMT Legacy Surveys (Chrysostomou 2010), namely the JCMT Plane Survey (JPS; Moore et al. 2015; Eden et al. 2017) and the JCMT Gould Belt Survey (GBS; Ward-Thompson et al. 2007). The SCUBA-2 Ambitious Sky Survey (SASSy; MacKenzie et al. 2011; Netke et al. 2017; Thompson et al., in preparation), covers half of the Galactic Plane but does not have the desired rms.

The PGCCs not previously observed at JCMT were placed into a 3D grid with each longitude bin 30° wide, latitude bins of $|b| = 0^\circ, 4^\circ, 10^\circ$, and 90° , and distance bins of 0, 0.2, 0.5, 1, 2, and 8 kpc. Sources with column densities $N_{\text{H}_2} < 2 \times 10^{21} \text{ cm}^{-2}$ were chosen randomly within each bin, with all sources with column densities $N_{\text{H}_2} > 2 \times 10^{21} \text{ cm}^{-2}$ observed. This column density criterium is due to the pilot study of the initial 300 PGCCs, where the detection rate of PGCCs with $N_{\text{H}_2} < 10^{21} \text{ cm}^{-2}$ was dramatically lower. The JCMT has through SCOPE, and other archival data, covered nearly all PGCCs with column densities of $N_{\text{H}_2} > 2 \times 10^{21} \text{ cm}^{-2}$ within the declination range of -30° – $+35^\circ$, the most likely star-forming PGCCs (Wang et al., in preparation).

The properties of the observed sources are displayed in Fig. 1. The presented properties are Galactic longitude, Galactic latitude, temperature, distance, column density, mass, luminosity, major axis, and aspect ratio. The physical properties are not derived for all

sources, and are as calculated by Planck Collaboration XXVIII (2016). These distributions are compared to the entire populations, as derived by Planck Collaboration XXVIII (2016). The biggest departure is with column density. We observed higher column density PGCCs than the average, which in turn skewed the SCOPE mass distribution to higher observed masses. Low column density ($N_{\text{H}_2} < 10^{21} \text{ cm}^{-2}$) PGCCs usually do not contain dense cores, based on our pilot observations, and thus are not interesting for star formation studies.

The average angular size of PGCCs is 8 arcmin (Planck Collaboration XXVIII 2016) therefore the CV Daisy mode of SCUBA-2 was used for these observations (Bintley et al. 2014). The CV Daisy mode is specifically designed for small, compact objects, with the telescope keeping to a circular pattern at $155 \text{ arcsec s}^{-1}$. Each SCOPE map takes 16 min to perform, with the CV Daisy mode producing $850 \mu\text{m}$ rms noise values of 6 mJy beam^{-1} in the central 3 arcmin, with $850 \mu\text{m}$ rms noise out to radii of 6 arcmin of 10 – 30 mJy beam^{-1} .

The SCOPE survey including pilot studies observed fields towards 1235 PGCCs in 1062 fields, with compact source detections towards ~ 51 per cent of fields, 45 per cent of PGCCs. The observed PGCCs in the SCOPE survey are displayed in their Galactic context in Fig. 2, with the 174 and 321 PGCCs observed by the JPS and GBS, respectively, overlaid. This paper will deal with only those observed as part of the SCOPE project.

The goal of SCOPE was to observe PGCCs in all Galactic environments. Comparison to the entire PGCC population and to sources in the GBS fields (Fig. 3) shows that SCOPE observations are representative of the high column density PGCC targets and complement the sources observed in GBS.

2.1 Complementary observations

In addition to the SCOPE survey, there are ongoing surveys at other facilities, giving complementary data to these PGCC detections (Liu et al. 2015, 2018a). The Taeduk Radio Astronomy Observatory (TRAO) Observations of *Planck* cold clumps (TOP) survey is observing ~ 2000 PGCCs in the rotational transition of $J = 1 - 0$ of CO isotopologues ^{12}CO and ^{13}CO at resolutions of 45 – 47 arcsec . A full description of this survey can be found in Liu et al. (2018a). Further $J = 1 - 0$ observations have been made at the Purple Mountain Observatory (PMO) at the same resolution. These observations will allow PGCCs to be put in the greater context of extended CO emission and structure.

The SMT (Submillimetre Telescope) ‘All-sky’ Mapping of *Planck* Interstellar Nebulae in the Galaxy (SAMPLING; Wang et al. 2018) survey follows up PGCCs in the $J = 2 - 1$ transition of ^{12}CO and ^{13}CO . The detection of two transitions will allow more accurate column densities to be calculated.

Further PI observations have occurred at the Nobeyama Radio Observatory 45 m telescope, the 21 m telescopes in Korean VLBI Network (KVN) and the Effelsberg 100 m telescope in the dense gas tracers such as HCO^+ , N_2H^+ , HC_3N , CCS , DNC , HN^{13}C , N_2D^+ , and NH_3 towards samples of SCUBA-2 dense cores in PGCCs. By observing these species, temperatures, depletion, and deuteration fractions can be determined (Tatematsu et al. 2017).

3 DATA REDUCTION AND SCOPE DATA

Liu et al. (2018a) provides a full description of different data reduction methods employed and tested within the SCOPE survey.

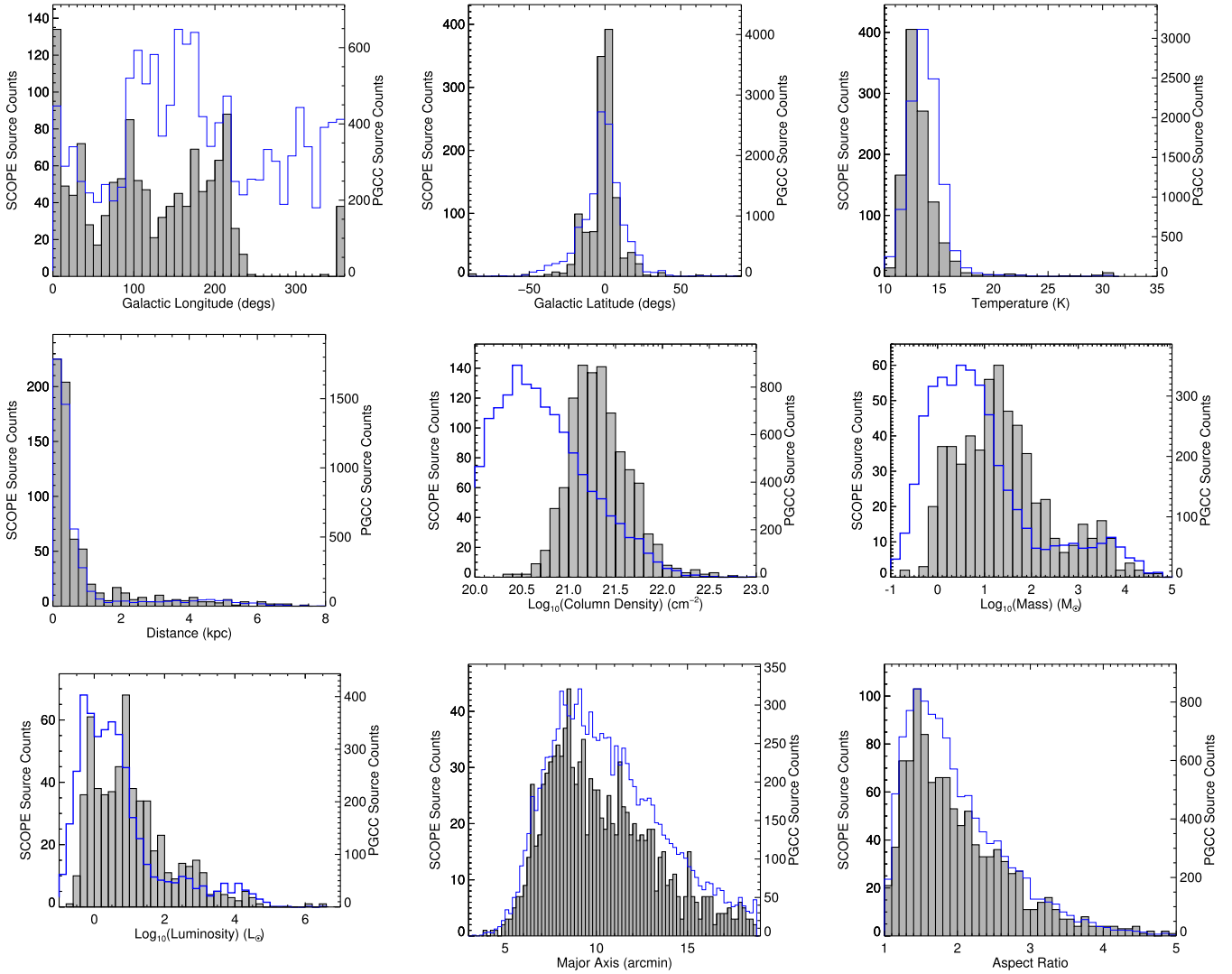


Figure 1. Properties of the PGCCs observed in the SCOPE survey (the grey histogram), with the total PGCC population from Planck Collaboration XXVIII (2016) overlaid in blue. The top row displays the Galactic longitude, Galactic latitude, and temperature, in the left-hand, central, and right-hand panels, respectively. The middle row are the distance, column density, and mass, with the bottom row showing the luminosity, major axis, and aspect ratio.

The data reduction employed within the first SCOPE data release uses the dynamic iterative map-maker (Chapin et al. 2013), part of the *Starlink* SMURF package (Jenness et al. 2011). These data use a 200 arcsec spatial filter, with no use of external masking. This initial data reduction is then filtered for regions with a signal-to-noise ratio (SNR) less than 3, with these high-SNR regions used then as a mask for a further reduction. A full description of the masking process can be found in Mairs et al. (2015).

A flux conversion factor of $554 \text{ Jy beam}^{-1} \text{ pW}^{-1}$ is used to convert from the native units of pW to Jy beam^{-1} . This value is ~ 3 per cent higher than the $537 \text{ Jy beam}^{-1} \text{ pW}^{-1}$ flux conversion factor recommended by Dempsey et al. (2013b), reflecting the pixel size (4 arcsec) and data reduction method used by the SCOPE survey as the pixel size is a factor in the flux conversion factor (FCF) equation.

Examples of two of the observed PGCCs are shown in Fig. 4, a complex, filamentary source, and a high-latitude cloud with simple morphology.

The mean rms within the central 12 arcmin of the 1062 fields (this is the number of fields observed, containing the ob-

served 1235 PGCCs) is $0.185 \text{ Jy arcsec}^{-2}$, which corresponds to $43.9 \text{ mJy beam}^{-1}$. This sensitivity is a factor of ~ 1.5 worse than the $25\text{--}31 \text{ mJy beam}^{-1}$ rms of the JPS (Eden et al. 2017). Within the central 3 arcmin, the rms is found to be $0.028 \text{ Jy arcsec}^{-2}$, which corresponds to $6.65 \text{ mJy beam}^{-1}$.

4 COMPACT SOURCE CATALOGUE

4.1 Compact source extraction

Compact sources were extracted from the images using the FELLWALKER algorithm (FW; Berry 2015).¹ Justification for the choice of source extraction algorithm and the parameters used is outlined in Moore et al. (2015) and Eden et al. (2017). The parameter FELLWALKER:MINPIX is adjusted to account for the larger pixel size used in the SCOPE reduction.

¹FW is part of the *Starlink* CUPID package outlined in Berry et al. (2007).

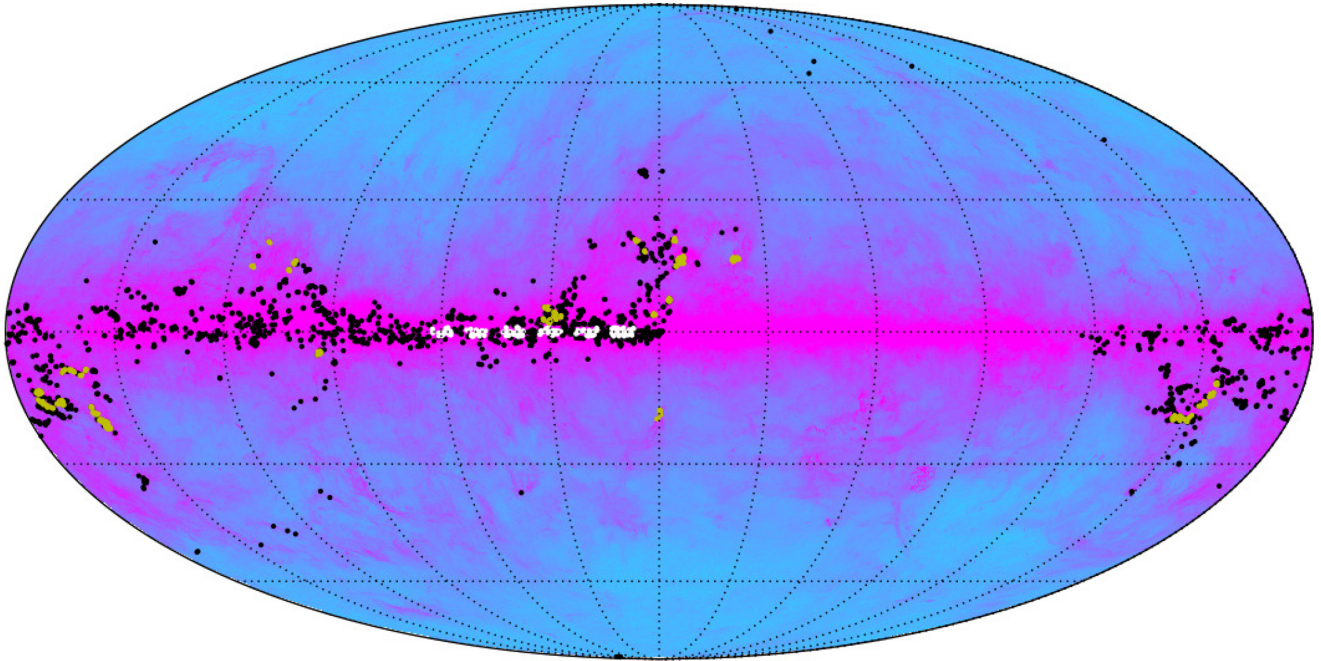


Figure 2. The distribution of observed PGCCs by the JCMT. The black points represent SCOPE sources, whilst the white and gold points were observed as part of the JPS and GBS, respectively. The underlying image is the *Planck* 353 GHz (850 μm) intensity map.

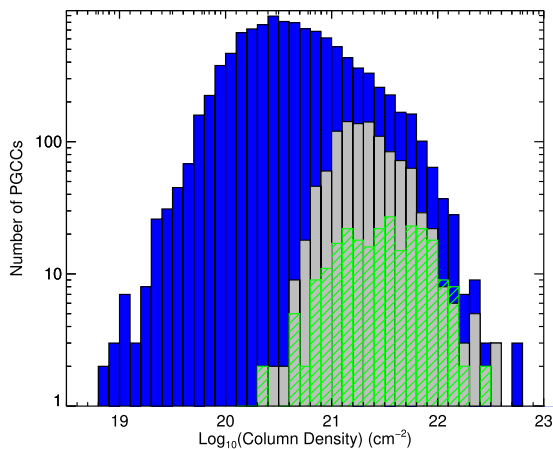


Figure 3. Histograms of column density of PGCCs with the entire population represented by the blue histogram, the grey histogram representing those PGCCs observed by SCOPE, and the green hashed histogram covering those PGCCs observed by the JCMT in the Gould's Belt Survey (Ward-Thompson et al. 2007).

The FW algorithm is run on the SNR maps, with the mask produced by CUPID:FINDCLUMPS used to extract flux from the emission maps.

Compact sources were initially identified in 821 of the 1062 observed fields. Sources that had a peak SNR < 5 were rejected, as well as sources with an aspect ratio > 5 . The sensitivity to extended, filamentary objects in the SCOPE survey will be explored in a future study (Fich et al., in preparation). These quality control cuts resulted in 3528 sources, with examples of the source extraction results for two fields shown in Fig. 4.

Table 1 contains a portion of the full SCOPE compact source catalogue. The columns are as follows: (1) SCOPE catalogue source name; (2) SCOPE Region; (3) and (4) Right Ascension and

Declination (J2000) of the peak flux position within the SCOPE source; (5) and (6) Right Ascension and Declination (J2000) of the central point; (7–9) semimajor axis, semiminor axis, and position angle, measured anticlockwise from equatorial north, of the ellipse fit to the shape of the SCOPE source that are not deconvolved sizes; (10) effective radius of source, calculated by $\sqrt{(A/\pi)}$, where A is the area of the source above the detection threshold of $3\sigma_{\text{rms}}$; (11–12) peak flux density, in units of Jy arcsec^{-2} , and associated uncertainty; (13–14) integrated 850 μm flux, in units of Jy, and associated uncertainty and (15) SNR of the source, calculated from the peak flux density and the σ_{rms} from the observed field. The uncertainties take account for errors in calibration, taken to be 5 percent (Dempsey et al. 2013b), and uncertainties in the FCF value used, also taken to be 5 percent. A full version is included in the supporting information. The 3528 sources were distributed across 558 PGCCs.

The FW routine was tested extensively within the JPS survey, with a 95 percent recovery fraction of artificial sources found to be at approximately 5σ . A full explanation can be found in Eden et al. (2017). Therefore, we are assuming that this completeness limit is valid for the observed SCOPE sources within the Galactic Plane. An improved recovery fraction of 99 percent was found in two SCOPE fields at $\|b\| > 30^\circ$.

4.2 Recovered flux densities

The FW algorithm is well understood (Eden et al. 2017). Therefore, any differences in the recovered flux densities compared to other surveys are likely due to calibration issues. To test the recovered fluxes, the SCOPE fluxes were compared to those of the JPS survey (Eden et al. 2017), both positionally matched and the survey as a whole.

The distributions of peak intensities and integrated fluxes for both surveys are displayed in Fig. 5. The JPS survey source intensities have been converted into mJy arcsec^{-2} and mJy in the peak intensity

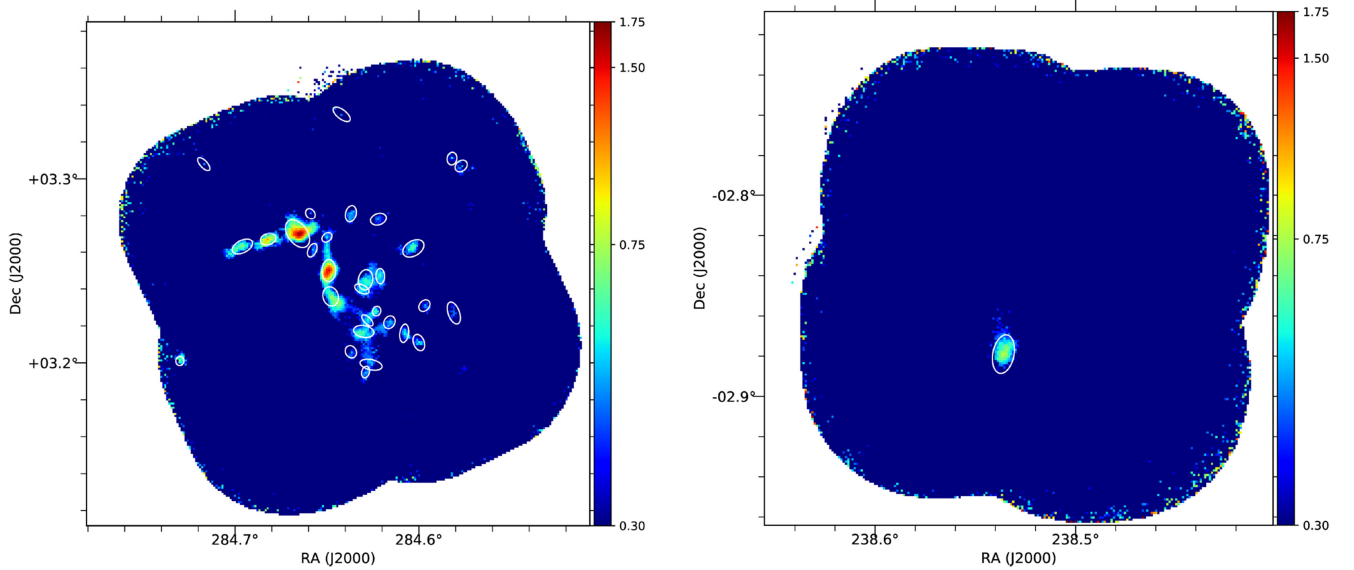


Figure 4. Examples of observed PGCCs in the SCOPE survey. Left-hand panel: A complicated, filamentary source at Galactic coordinates $\ell = 36.62$, $b = -0.11$, PGCC_G36.62–0.11. Right-hand panel: A high-latitude PGCC, positioned at $\ell = 6.04$, $b = 36.77$, PGCC_G6.04+36.77 (Liu et al., in preparation). The intensity scale in each image is mJy arcsec^{-2} , and the white ellipses represent the elliptical fits to the FW extractions within the observed field.

and integrated flux distributions, respectively. The peak intensity distribution of the JPS goes $\sim 2 \times$ deeper than SCOPE, which corresponds to the rms values of the respective surveys. The CV Daisy mode actually produces deeper observations in the central regions, with SCOPE having greater sensitivity in those regions. The peaks of the integrated flux distributions, however, are consistent with each other. By assuming single power-law laws for the tails of the distributions of the form $\Delta N/\Delta S_\nu \propto S^{-\alpha}$, values of α for the two distributions were found to be $\alpha = 2.10 \pm 0.13$ and $\alpha = 1.97 \pm 0.10$ for the peak intensity and integrated flux distributions, respectively, above limits of 0.5 mJy arcsec^2 and 2 mJy for the peak intensity and integrated flux distributions, respectively. The SCOPE peak intensity distribution is consistent with that of the JPS ($\alpha = 2.24 \pm 0.12$), but the SCOPE integrated flux distribution is flatter than that of the JPS survey ($\alpha = 2.56 \pm 0.18$).

There is actually a slight overlap between the SCOPE and the JPS surveys. By positionally matching the two surveys within a JCMT beam of 14.4 arcsec , we find 83 matches. A comparison of peak intensities and integrated fluxes for sources in common is shown in Fig. 6. The two distributions show a slight discrepancy, with the integrated fluxes departing by a greater amount. The difference between the peak fluxes can be accounted for by the difference in pixel sizes (3 arcsec in the JPS, 4 arcsec in SCOPE). As reported in Mairs et al. (2015) and Rumble et al. (2015), changing the pixel size, especially to smaller sizes, can change the peak value, with 3 arcsec pixels giving the most accurate peak fluxes. The difference in integrated fluxes is accounted for by larger sources in the SCOPE survey, with sources in the SCOPE survey found to have a mean size 1.32 times that of the reported JPS source size. A linear best fit to the relationship gives a gradient of 1.06 ± 0.05 . The different FCFs will also account for some of the difference. However, the major difference comes from the sensitivity in the outer edges of the SCOPE maps, where these 83 sources are found. In these regions, the JPS is $\sim 2 \times$ more sensitive, thus causing the sources to be broken up in the JPS. A full explanation of this effect is contained in Eden et al. (2017) in the context of JPS and ATLASGAL (Schuller et al. 2009) comparisons.

4.3 Angular size distribution

The angular size distribution of the SCOPE sources is shown in Fig. 7. The plotted quantity is the major axis of the elliptical fit to the source, provided by FW. The reported sizes are not deconvolved sizes. The peak of the distribution, found at 35 arcsec , is in marked contrast to the peak at 8 arcmin found in the *Planck* catalogue (Planck Collaboration XXVIII 2016). This difference further exemplifies the inner sub-structure identified by the higher resolution SCOPE survey and the presence of multiple SCUBA-2 sources inside a single PGCC, which is highlighted in Fig. 8, where 61 per cent of detected PGCCs have three or more SCOPE sources.

We present the aspect ratios of the SCOPE sources in Fig. 9. We have overlaid the aspect ratios of the observed *Planck* PGCCs in this survey. Planck Collaboration XXVIII (2016) found that 40 per cent of sources had an aspect ratio of between 2 and 3, with a shoulder at those values not present in the SCOPE compact source catalogue. This shoulder in the PGCC catalogue aspect ratios is a hint at the sub-structure observed by SCOPE, with a higher aspect ratio pointing towards more filamentary structures. It is also a reflection of the nature of the sources extracted by the FW algorithm, which is attuned more towards extracting compact objects.

5 SCOPE SURVEY AND DATA ACCESS

The SCOPE data products can be downloaded from the Canadian Astronomy Data Centre’s JCMT Science Archive,² with the proposal IDs MJLSY14B, M15AI05, M15BI06, and M16AL003. These IDs correspond to observations taken in the SASSy survey, two PI proposals, all of which formed the pilot observations, and the SCOPE survey, respectively. As well as these data, the raw observation data can also be downloaded from the same location.

The full source compact source catalogue is available as supporting information.

²<http://www.cadc-ccda.hia-ihp.nrc-cnrc.gc.ca/en/jcmt/>

Table 1. The SCOPE compact source catalogue. The columns are as defined in Section 4.1.

| Name | Region | R_{Apeak} ($^{\circ}$) (3) | Dec_{npk} ($^{\circ}$) (4) | R_{Ancn} ($^{\circ}$) (5) | Dec_{ncn} ($^{\circ}$) (6) | σ_{maj} (arcsec) (7) | σ_{min} (arcsec) (8) | PA ($^{\circ}$) (9) | R_{eff} (arcsec) (10) | S_{peak} (mJy arcsec $^{-2}$) (11) | ΔS_{peak} (mJy arcsec $^{-2}$) (12) | S_{int} (mJy) (13) | ΔS_{int} (mJy) (14) | SNR (15) |
|--------------------|---------------|--|---|---|---|---------------------------------------|---------------------------------------|--------------------------|-----------------------------------|---|--|--------------------------------|---------------------------------------|-------------|
| (1) | (2) | (3) | (4) | (5) | (6) | (7) | (8) | (9) | (10) | (11) | (12) | (13) | (14) | (15) |
| SCOPEG000.39+11.38 | G0.49+11.38a | 256.139 | -22.294 | 256.139 | -22.299 | 15 | 7 | 260 | 20 | 0.308 | 0.035 | 0.647 | 0.032 | 5.39 |
| SCOPEG000.41+11.41 | G0.49+11.38a | 256.120 | -22.259 | 256.115 | -22.258 | 17 | 11 | 207 | 29 | 0.943 | 0.025 | 4.232 | 0.212 | 16.53 |
| SCOPEG001.37+20.95 | G001.3+20.9A1 | 248.655 | -15.791 | 248.660 | -15.794 | 23 | 15 | 192 | 43 | 1.132 | 0.151 | 7.936 | 0.397 | 11.26 |
| SCOPEG001.37+20.94 | G001.3+20.9A1 | 248.647 | -15.782 | 248.647 | -15.781 | 21 | 18 | 132 | 46 | 1.379 | 0.202 | 14.625 | 0.731 | 13.71 |
| SCOPEG001.37+20.96 | G001.3+20.9A1 | 248.636 | -15.776 | 248.634 | -15.771 | 18 | 14 | 222 | 33 | 1.038 | 0.155 | 4.771 | 0.239 | 10.33 |
| SCOPEG001.82+16.56 | G001.8+16.5A1 | 252.559 | -18.105 | 252.559 | -18.104 | 24 | 15 | 190 | 42 | 0.651 | 0.081 | 4.494 | 0.225 | 7.82 |
| SCOPEG003.98+35.70 | G4.18+35.79a | 238.346 | -4.808 | 238.357 | -4.798 | 37 | 20 | 162 | 58 | 3.143 | 0.050 | 42.604 | 2.130 | 24.61 |
| SCOPEG004.00+35.71 | G4.18+35.79a | 238.350 | -4.788 | 238.356 | -4.778 | 48 | 33 | 167 | 79 | 1.515 | 0.081 | 35.849 | 1.792 | 11.86 |
| SCOPEG004.01+35.66 | G4.18+35.79a | 238.394 | -4.809 | 238.390 | -4.806 | 13 | 8 | 161 | 21 | 3.071 | 0.050 | 7.201 | 0.360 | 24.04 |
| SCOPEG004.02+35.66 | G4.18+35.79a | 238.398 | -4.808 | 238.400 | -4.801 | 15 | 10 | 140 | 26 | 2.137 | 0.027 | 6.655 | 0.333 | 16.73 |
| SCOPEG004.61+36.64 | G004.5+36.7A1 | 237.928 | -3.821 | 237.918 | -3.837 | 45 | 21 | 115 | 68 | 15.535 | 0.069 | 243.776 | 12.189 | 27.44 |
| SCOPEG004.62+36.64 | G004.5+36.7A1 | 237.927 | -3.816 | 237.918 | -3.817 | 29 | 8 | 156 | 37 | 13.091 | 0.062 | 68.204 | 3.410 | 23.12 |
| SCOPEG004.62+36.65 | G004.5+36.7A1 | 237.926 | -3.810 | 237.914 | -3.799 | 40 | 20 | 254 | 66 | 12.707 | 0.049 | 167.376 | 8.369 | 22.44 |
| SCOPEG005.00+18.99 | G005.0+19.0A1 | 252.391 | -14.230 | 252.389 | -14.229 | 9 | 4 | 143 | 11 | 1.117 | 0.026 | 0.755 | 0.038 | 17.61 |
| SCOPEG005.23+01.99 | G5.17+1.97 | 271.305 | -25.426 | 271.305 | -25.427 | 14 | 10 | 195 | 26 | 0.724 | 0.077 | 2.136 | 0.107 | 7.34 |
| SCOPEG005.64+00.23 | G5.73+0.19 | 269.408 | -23.968 | 269.411 | -23.972 | 22 | 13 | 219 | 36 | 1.930 | 0.147 | 9.894 | 0.495 | 10.58 |
| SCOPEG005.64+00.24 | G5.73+0.19 | 269.395 | -23.966 | 269.394 | -23.962 | 25 | 17 | 239 | 51 | 12.946 | 0.153 | 62.862 | 3.143 | 71.00 |
| SCOPEG005.65+00.22 | G5.73+0.19 | 269.416 | -23.964 | 269.416 | -23.960 | 28 | 14 | 254 | 47 | 1.665 | 0.225 | 10.648 | 0.532 | 9.13 |
| SCOPEG005.65+00.26 | G5.73+0.19 | 269.381 | -23.944 | 269.380 | -23.944 | 8 | 6 | 123 | 14 | 0.917 | 0.050 | 1.119 | 0.056 | 5.03 |
| SCOPEG005.83+00.94 | G005.91+01.00 | 270.615 | -24.383 | 270.618 | -24.382 | 15 | 9 | 227 | 26 | 1.654 | 0.050 | 5.157 | 0.258 | 12.63 |
| SCOPEG005.83+01.03 | G005.91+01.00 | 270.704 | -24.435 | 270.703 | -24.443 | 31 | 14 | 97 | 35 | 0.788 | 0.040 | 3.053 | 0.153 | 6.02 |
| SCOPEG005.84+01.00 | G005.91+01.00 | 270.676 | -24.406 | 270.678 | -24.412 | 32 | 24 | 267 | 65 | 2.297 | 0.246 | 22.732 | 1.137 | 17.54 |
| SCOPEG005.85+00.99 | G005.91+01.00 | 270.682 | -24.392 | 270.683 | -24.390 | 15 | 15 | 102 | 35 | 1.618 | 0.254 | 8.175 | 0.409 | 12.35 |
| SCOPEG005.85+01.00 | G005.91+01.00 | 270.693 | -24.397 | 270.697 | -24.399 | 18 | 14 | 204 | 32 | 0.753 | 0.105 | 3.974 | 0.199 | 5.75 |
| SCOPEG005.87+00.99 | G005.91+01.00 | 270.693 | -24.375 | 270.693 | -24.378 | 28 | 12 | 243 | 40 | 1.183 | 0.164 | 8.784 | 0.439 | 9.03 |
| SCOPEG005.88+00.94 | G005.91+01.00 | 270.648 | -24.345 | 270.645 | -24.352 | 27 | 25 | 109 | 58 | 0.999 | 0.138 | 15.217 | 0.761 | 7.62 |
| SCOPEG005.88+01.01 | G005.91+01.00 | 270.709 | -24.374 | 270.705 | -24.372 | 22 | 13 | 257 | 38 | 2.814 | 0.397 | 14.790 | 0.739 | 21.49 |
| SCOPEG005.89+00.91 | G005.91+01.00 | 270.624 | -24.325 | 270.629 | -24.320 | 23 | 14 | 161 | 39 | 0.723 | 0.091 | 5.750 | 0.287 | 5.52 |
| SCOPEG005.89+00.94 | G005.91+01.00 | 270.656 | -24.334 | 270.655 | -24.331 | 15 | 12 | 240 | 32 | 1.727 | 0.193 | 5.672 | 0.284 | 13.18 |
| SCOPEG005.90+00.93 | G005.91+01.00 | 270.650 | -24.317 | 270.648 | -24.315 | 16 | 10 | 234 | 31 | 1.162 | 0.123 | 4.413 | 0.221 | 8.88 |
| SCOPEG005.90+01.01 | G005.91+01.00 | 270.721 | -24.362 | 270.720 | -24.371 | 46 | 24 | 261 | 72 | 1.936 | 0.248 | 36.472 | 1.824 | 14.78 |
| SCOPEG005.91+00.95 | G005.91+01.00 | 270.675 | -24.318 | 270.671 | -24.319 | 25 | 18 | 256 | 51 | 2.880 | 0.294 | 14.736 | 0.737 | 21.99 |
| SCOPEG005.91+01.00 | G005.91+01.00 | 270.724 | -24.345 | 270.725 | -24.344 | 20 | 10 | 141 | 30 | 1.467 | 0.354 | 9.249 | 0.462 | 11.20 |
| SCOPEG005.91+01.02 | G005.91+01.00 | 270.742 | -24.357 | 270.740 | -24.354 | 23 | 21 | 223 | 54 | 2.246 | 0.442 | 20.771 | 1.039 | 17.15 |
| SCOPEG005.92+00.96 | G005.91+01.00 | 270.683 | -24.313 | 270.683 | -24.311 | 12 | 9 | 117 | 22 | 0.722 | 0.121 | 1.833 | 0.092 | 5.51 |
| SCOPEG005.92+00.97 | G005.91+01.00 | 270.696 | -24.317 | 270.696 | -24.316 | 13 | 12 | 170 | 29 | 0.695 | 0.138 | 2.919 | 0.146 | 5.31 |
| SCOPEG005.92+00.99 | G005.91+01.00 | 270.714 | -24.335 | 270.713 | -24.335 | 31 | 23 | 156 | 62 | 2.432 | 0.550 | 27.790 | 1.389 | 18.57 |
| SCOPEG005.96+01.12 | G005.91+01.00 | 270.857 | -24.359 | 270.843 | -24.361 | 23 | 15 | 162 | 36 | 0.701 | 0.032 | 4.665 | 0.233 | 5.35 |

Note. Only a small portion of the catalogue is shown here. The entire catalogue is available in the supporting information.

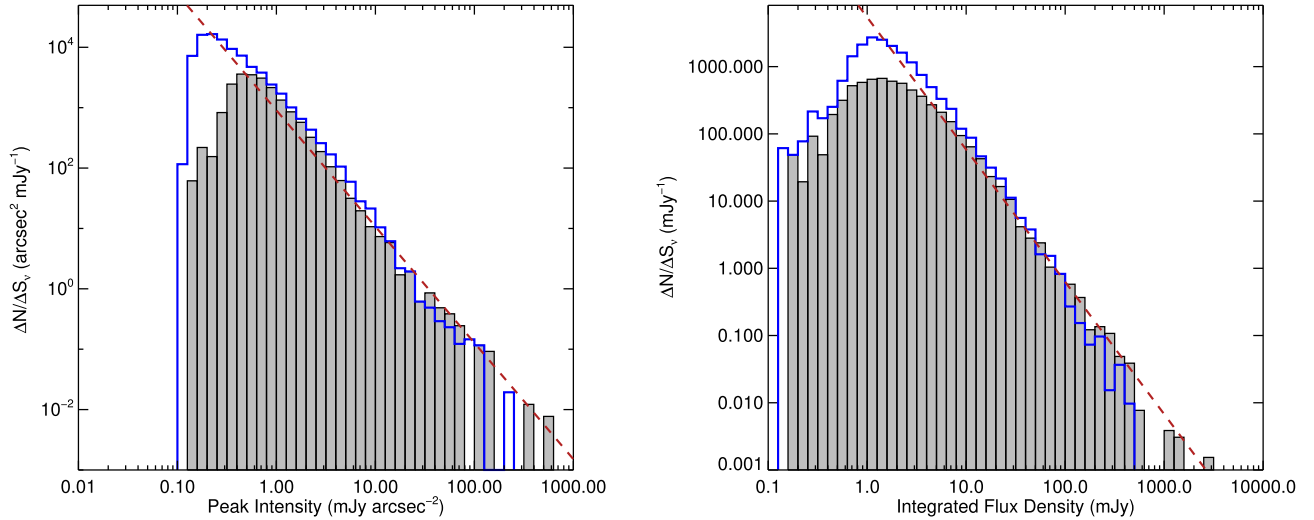


Figure 5. Peak and integrated flux distributions for the SCOPE survey (the grey, filled histogram) compared to the JPS (the blue histogram) in the left-hand and right-hand panels, respectively. The least-squares fit to the SCOPE distributions are indicated by the red, dashed line.

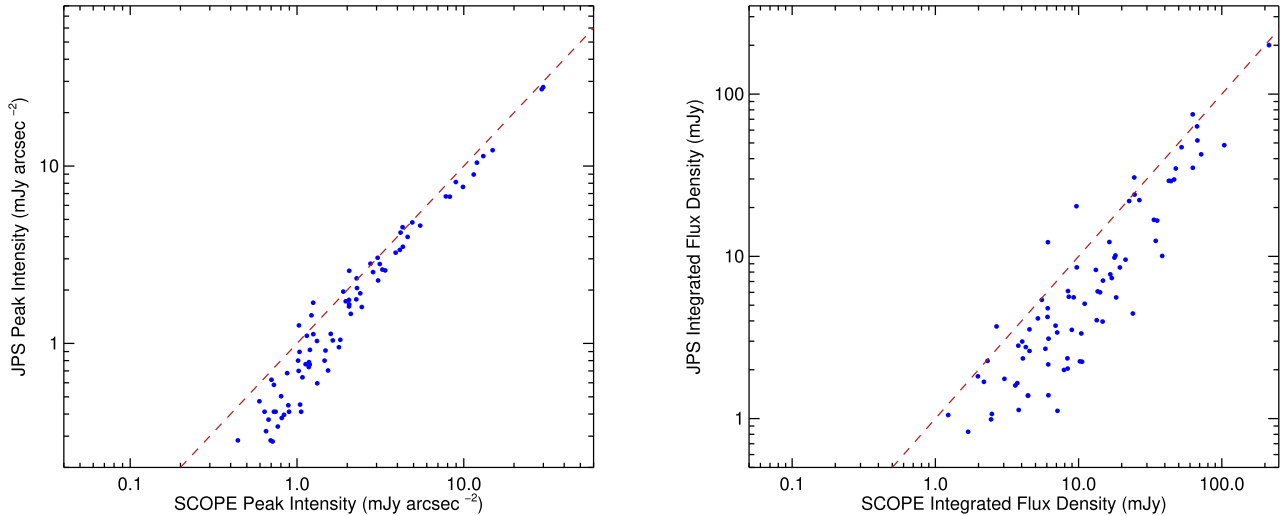


Figure 6. Comparison of the recovered peak and total fluxes for positionally matched SCOPE and JPS sources, in the left-hand and right-hand panels, respectively. The red dashed line represents the 1:1 line.

6 RESULTS

6.1 Detection statistics

The PGCCs observed in the SCOPE survey were chosen to sample across the spectrum of a host of statistics, as displayed in Fig. 1, with a bias towards the highest column density sources, as described earlier. The detection rate of each statistic is shown in Fig. 10. Six high-latitude PGCCs with detections ($\|b\| > 30^\circ$) were excluded from the statistics as they were found to be associated with lensed galaxies (Liu et al., in preparation).

The longitude detection rates are approximately equal to the overall detection rate (0.46), with lower rates found in the central 20° . In these longitudes, higher latitude sources are observed, with lower detection rates found outside the central 4° ($\|b\| > 2^\circ$) of the Galactic Plane. In the latitude range of $\|b\| < 2^\circ$, the detection rate is slightly higher than the overall rate, approximately 0.50. This is also reflected in the detection rate as a function of distance. The

detection rate at higher distances, those classically taken to be in the Galactic Plane, is well detected. However, the local, higher latitude sources are not detected at a higher rate.

The column densities are 95 per cent complete above densities of $N_{\text{H}_2} > 5 \times 10^{21} \text{ cm}^{-2}$. This detection rate corresponds to the threshold for star formation found in studies of nearby star-forming clouds (André et al. 2010; Heiderman et al. 2010; Lada, Lombardi & Alves 2010; André et al. 2014). Some bins are subject to low detection rates due to low number statistics. The mass and luminosities are complete to a 95 per cent rate above $5 \times 10^3 M_\odot$ and $1 \times 10^3 L_\odot$, respectively.

The column density detection rate does not account for the selection bias imposed on the initial sample. When comparing the entire PGCC population, the observed SCOPE sample, and the detected PGCCs in SCOPE, we can see that the highest column density sources are confined to the lower latitudes, which are the PGCCs with the largest distances, as seen in Fig. 11. Deeper

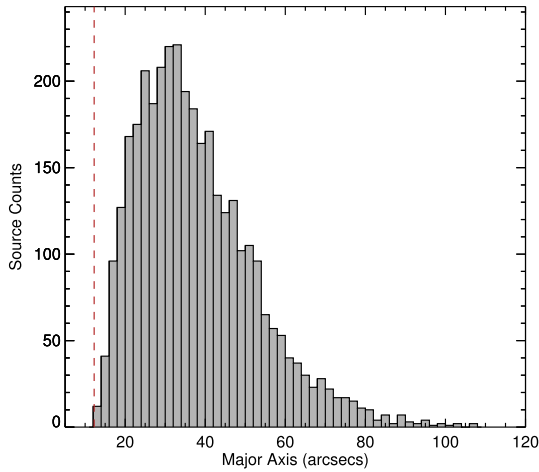


Figure 7. Histogram of the major axes identified by FW of the extracted SCOPE compact sources. The red dashed line indicates the beam size of the JCMT at 850 μm .

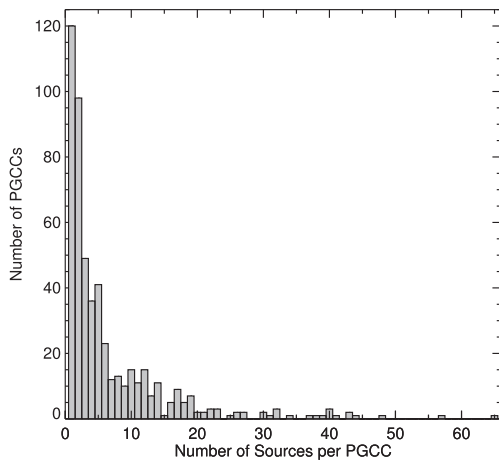


Figure 8. Histogram of the number of compact sources extracted per PGCC with a detection in the SCOPE survey.

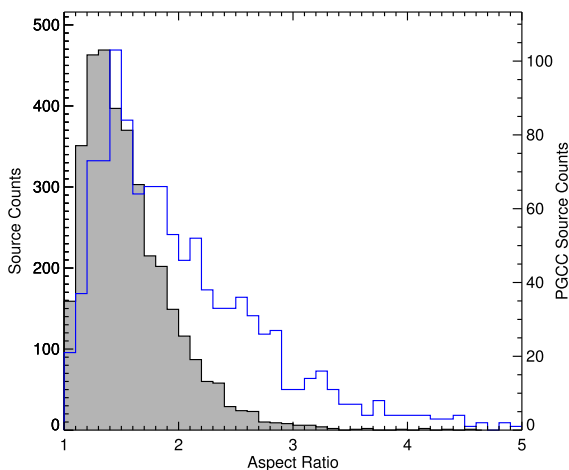


Figure 9. Histogram of the aspect ratios of all SCOPE sources (the grey histogram) with the aspect ratios of the SCOPE-observed PGCCs overlaid in the blue histogram.

observations will be required to trace the lowest column density objects.

The major axes and aspect ratios fluctuate around the actual detection rate of the SCOPE survey.

The detection rate of the temperatures is skewed by the lack of derived temperatures by Planck Collaboration XXVIII (2016). 619 of the 1235 observed PGCCs do not have derived temperatures, with 360 of those 619 detected in SCOPE. The detection rate at the lower temperatures of less than 15 K is 0.15.

6.2 Star formation out of the Galactic plane

The SCOPE survey gives a sample of potentially star-forming cores and clumps in different Galactic environments. The YSO catalogue of Marton et al. (2016) provides an all-sky catalogue derived from the AllWISE catalogue (Cutri et al. 2013). By positionally matching these two catalogues, we find 865 YSOs located within the map extents of 201 observed PGCCs that have detected compact sources.

The YSO catalogue of Marton et al. (2016) contains the magnitudes of the four WISE bands (3.4, 4.6, 12, and 22 μm) as well as the *J*, *H*, and *K* bands from the positional matching of 2MASS Point Sources (Cutri et al. 2003). These seven bands can be used to calculate the luminosities of each YSO, and therefore the total YSO luminosity associated with a PGCC. The luminosities are calculated, once the magnitudes are converted into fluxes, using a trapezium rule estimation in log–log space, which was shown to provide a good approximation of the luminosity (Eden et al. 2015), with other studies using this method (e.g. Veneziani et al. 2013).

These luminosities, L , can be compared to the masses, M , of the SCOPE-detected YSOs to determine the ratio of L/M , a measure of the current star formation and an indicator of the evolutionary state of that star formation (e.g. Elia et al. 2017; Urquhart et al. 2018). Comparing this ratio between the nearby sources, complementary to the Gould’s Belt, and the more distant Galactic Plane can determine whether the star formation in either environment is at a different evolutionary stage (on average).

The masses were derived from the total emission within the SCOPE maps. The masses in the SCOPE maps are estimated using the optically thin approximation:

$$M = \frac{S_\nu D^2}{\kappa_\nu B_\nu(T_d)}, \quad (1)$$

where S_ν is the integrated flux of the emission, D is the distance (omitted in the calculation for the ratio of L/M), κ_ν is the mass absorption coefficient taken to be $0.01 \text{ cm}^2 \text{ g}^{-1}$ (Mitchell et al. 2001), which accounts for a gas-to-dust ratio of 100, and $B_\nu(T_d)$ is the Planck function evaluated at temperature, T_d , taken to be 13 K, the peak of the SCOPE-observed PGCC-temperature distribution.

The sample of 201 PGCCs with a YSO was split into two populations, a Gould’s Belt-like population and the distant Galactic Plane. This was done using a distance cut of 0.5 kpc, as this is taken to be the furthest Gould’s Belt sources (Ward-Thompson et al. 2007), with distances below this in the Gould’s Belt, and greater distances in the Galactic Plane. From hereafter, these populations will be referred to as the nearby and distant samples, respectively. The distances were estimated in three ways. The first was to take the distances as derived by Planck Collaboration XXVIII (2016). This accounted for 91 PGCCs. The second was to extract spectra from spectral line data from existing surveys (Dame, Hartmann & Thaddeus 2001; Jackson et al. 2006; Dempsey, Thomas & Currie 2013a; Rigby et al. 2016), with sources in the Plane compared to the Galactic rotation curve of Brand & Blitz (1993). This accounted

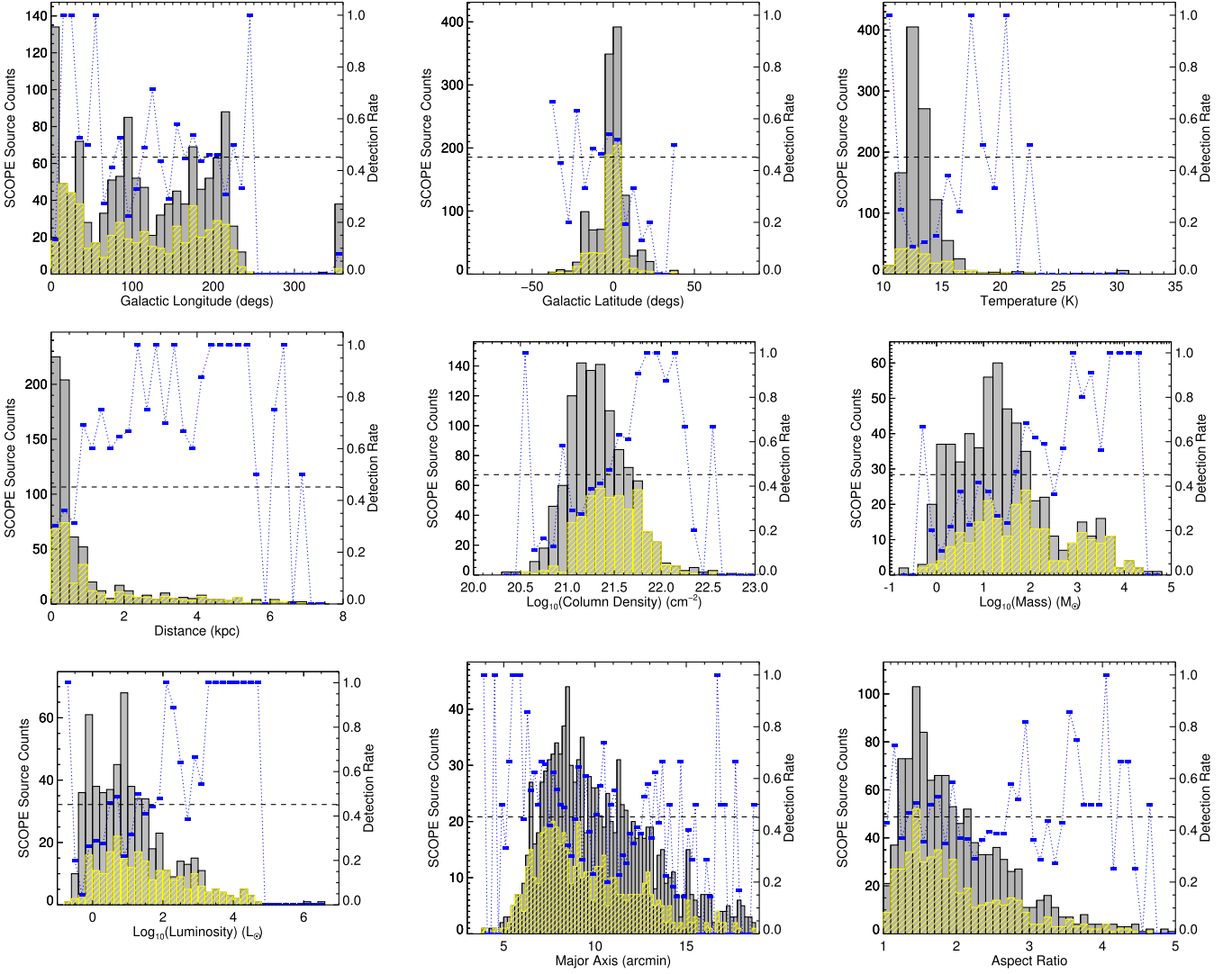


Figure 10. Distributions of the observed, *Planck*-derived statistics of SCOPE sources (the grey histograms) overlaid with the detected PGCCs (the yellow hashed histogram). The ratio of the two histograms is overlaid by the blue dotted line. The black dashed line represents the overall detection rate. As in Fig. 1, the top row displays the Galactic longitude, Galactic latitude, and temperature, in the left, central, and right-hand panels, respectively. The middle row are the distance, column density, and mass, with the bottom row showing the luminosity, major axis, and aspect ratio.

for a further 108 PGCCs. The final two were well out of the Plane at high latitudes, and were assumed to be local.

We found 114 and 87 PGCCs in the distant and nearby samples, respectively. The distribution of the L/M ratios for each of these populations is shown in Fig. 12. The mean values of the two populations are $0.78 \pm 0.16 L_{\odot}/M_{\odot}$ and $1.14 \pm 0.30 L_{\odot}/M_{\odot}$ for the distant and nearby samples, respectively, with median values of $0.21 \pm 0.16 L_{\odot}/M_{\odot}$ and $0.32 \pm 0.28 L_{\odot}/M_{\odot}$, respectively. The populations are consistent with each other, within the errors, indicating that the star formation in the distant Galactic Plane is at roughly the same evolutionary stage as that within the nearby Gould’s Belt-like sample. A Kolomogorov–Smirnov (K–S) test of the two sub-samples finds a 25 per cent chance they are not drawn from the same distribution. We therefore cannot strongly reject the null hypothesis that they are not drawn from the same sample and that the distributions at different distances are different. The sample of the Galactic Plane PGCCs will be extended when JPS sources are also included, and this analysis will be the subject of a further study (Eden et al., in preparation).

6.3 Column densities of SCOPE sources

The column densities of the SCOPE sources in the nearby environments and the distant Galactic Plane are compared. The column densities were calculated using the following:

$$N_{\text{H}_2} = \frac{S_{\text{v,peak}}}{B_{\text{v}}(T_{\text{d}})\Omega_{\text{b}}\kappa_{\text{v}}m_{\text{H}}\mu}, \quad (2)$$

where $S_{\text{v,peak}}$ is the peak intensity, $B_{\text{v}}(T_{\text{d}})$ and κ_{v} are as defined above, Ω_{b} is the solid angle of the beam, m_{H} is the mass of a hydrogen atom, and μ is the mean mass per hydrogen molecule, taken to be 2.8 (Kauffmann et al. 2008).

The distribution of column densities for the entire SCOPE sample, as well as the two sub-samples is displayed in Fig. 13 (top, middle), with the cumulative distribution also included. A K–S test of the two sub-samples gives a $\sim 2.5\sigma$, or a 2.5 per cent chance that they are not drawn from the same population. We therefore cannot strongly reject the null hypothesis that they are not drawn from the same sample.

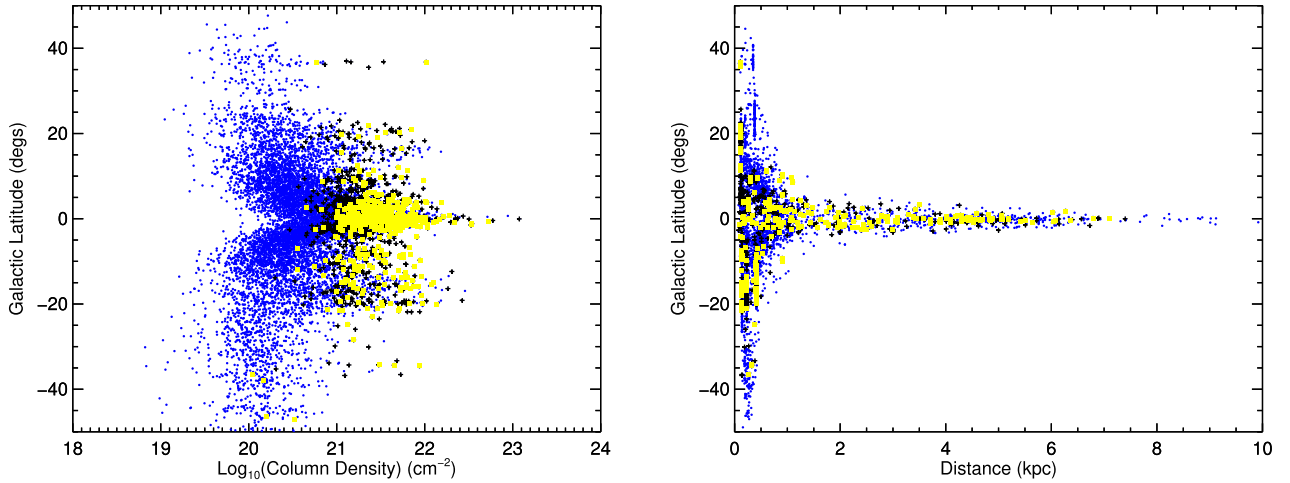


Figure 11. Latitude of PGCCs against column density (left-hand panel) and distance (right-hand panel). The blue circles are the entire PGCC sample from Planck Collaboration XXVIII (2016), the black plus symbols are the observed SCOPE PGCCs, with the yellow squares representing the detected SCOPE PGCCs.

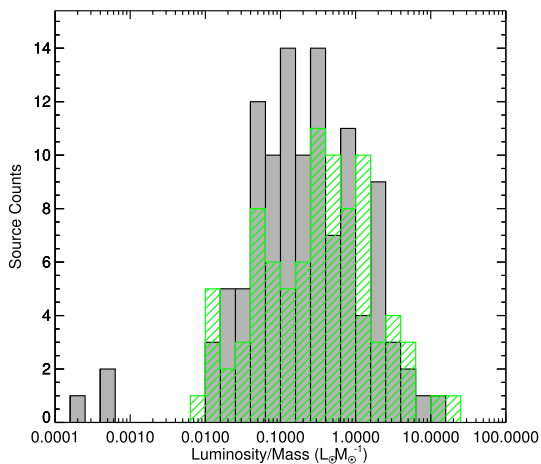


Figure 12. Histogram of the L/M ratios in SCOPE-detected PGCCs in the further (grey) and in the nearby (green) Galactic Plane.

When comparing only the star-forming samples, as shown in Fig. 13 (bottom), the K-S test gives a 94 per cent result that the nearby and distant Galactic Plane SCOPE sources are drawn from the same population. We can assume, however, that the total star-forming sample is considerably different from the entire SCOPE sample due to a K-S test giving a probability of their being the same of 0.001. This result is consistent with that of Urquhart et al. (2014), who found that the star-forming clumps in the ATLASGAL survey had a considerably different column density distribution than that of the entire population.

7 SUMMARY

We present the first data release of the SCOPE survey, presenting the data images and a compact source catalogue. The data consist of observations of 1235 PGCCs at angular resolutions of 14.4 arcsec, significantly improving upon the 5 arcmin resolution of *Planck*. The improved resolution reveals significant sub-structure within these sources, reflected by a compact source catalogue consisting of 3528 sources. The data are downloadable from the CADC, with

the compact source catalogue included as supporting information in this article.

The compact source catalogue was produced using the FW algorithm, reflecting the same method used within the JPS (Eden et al. 2017). A comparison of peak intensities and integrated fluxes in overlapping sources between the JPS and SCOPE surveys shows slight discrepancies, but otherwise good agreement. The SCOPE sources are significantly smaller than those within the *Planck* catalogue, with peaks of the angular-size distribution found at 35 arcsec compared to 8 arcmin.

The detection rate of PGCCs within the SCOPE survey is 45 percent, with 558 PGCCs detected of the 1235 observed. The survey is 95 complete in PGCCs with column densities $N_{\text{H}_2} > 5 \times 10^{21} \text{ cm}^{-2}$, and to masses and luminosities of $5 \times 10^3 M_\odot$ and $1 \times 10^3 L_\odot$, respectively.

By positionally matching the SCOPE compact sources with YSOs from the WISE catalogue, and splitting the sample into sources that are within 0.5 kpc and those at greater distances, we found that the ratio of L/M is consistent between these samples. The column densities of these two samples of SCOPE sources are also consistent. The distribution of column densities of star-forming sources, however, was found to be significantly different from those of the whole SCOPE compact source catalogue.

ACKNOWLEDGEMENTS

The authors would like to thank the anonymous referee for their comments; they have greatly improved the quality of the paper. DJE is supported by an STFC postdoctoral grant (ST/M000966/1). MJ acknowledges the support of the Academy of Finland Grant No. 285769. DC is currently supported by the Centre National d'Études Spatiales (CNES) through PhD grant 0102541 and the Région Bourgogne Franche-Comté. MK was supported by Basic Science Research Program through the National Research Foundation of Korea (NRF) funded by the Ministry of Science, ICT & Future Planning (No.NRF-2015R1C1A1A01052160). CWL is supported by Basic Science Research Program through the National Research Foundation of Korea (NRF) funded by the Ministry of Education, Science and Technology (NRF-2016R1A2B4012593). JHH is supported by the NSF of China under Grant Nos. 11873086 and U1631237, partly

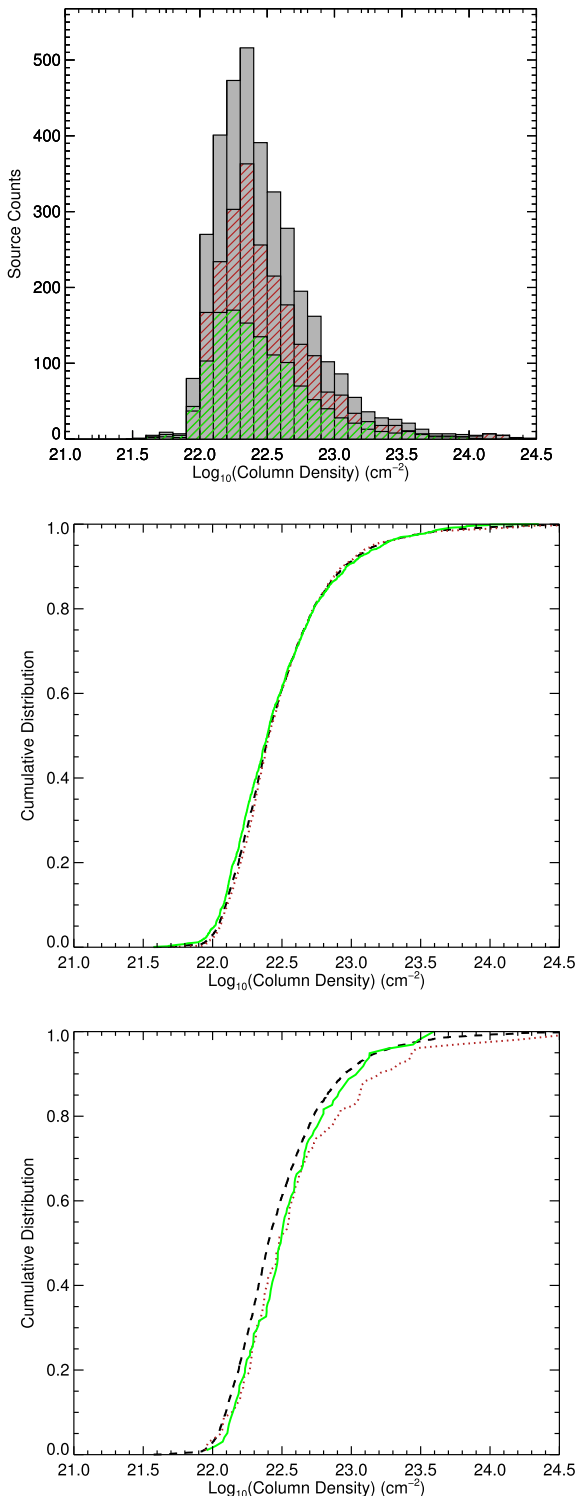


Figure 13. Top panel: column density distribution of all SCOPE compact sources (the grey histogram), with those in the distant Galactic Plane ($d > 500$ pc; the red histogram) and nearby sample ($d < 500$ pc; the green histogram). Middle panel: the cumulative distributions of the same histograms with the dashed black line, the dotted red line, and the green solid line representing, the whole sample, in the distant Galactic Plane and nearby Plane, respectively. Bottom panel: the cumulative distributions of the star-forming samples, with the dashed black line representing the total sample (as in the middle panel, includes non-star-forming sources), and the dotted red lines and the green solid lines represent the star-forming sources in distant and nearby environments, respectively.

by Yunnan province (2017HC018), and also partly by the Chinese Academy of Sciences (CAS) through a grant to the CAS South America Center for Astronomy (CASSACA) in Santiago, Chile. K.W. acknowledges support by the National Key Research and Development Program of China (2017YFA0402702), the National Science Foundation of China (11721303), and the starting grant at the Kavli Institute for Astronomy and Astrophysics, Peking University (7101502016). The James Clerk Maxwell Telescope is operated by the East Asian Observatory on behalf of The National Astronomical Observatory of Japan; Academia Sinica Institute of Astronomy and Astrophysics; the Korea Astronomy and Space Science Institute; the Operation, Maintenance, and Upgrading Fund for Astronomical Telescopes and Facility Instruments, budgeted from the Ministry of Finance (MOF) of China and administrated by the Chinese Academy of Sciences (CAS), as well as the National Key R&D Program of China (No. 2017YFA0402700). Additional funding support is provided by the Science and Technology Facilities Council of the United Kingdom and participating universities in the United Kingdom and Canada. The James Clerk Maxwell Telescope (JCMT) has historically been operated by the Joint Astronomy Centre on behalf of the Science and Technology Facilities Council of the United Kingdom, the National Research Council of Canada, and the Netherlands Organization for Scientific Research. Additional funds for the construction of SCUBA-2 were provided by the Canada Foundation for Innovation. This research was carried out in part at the Jet Propulsion Laboratory, which is operated for NASA by the California Institute of Technology. This research has made use of NASA's Astrophysics Data System. The STARLINK software (Currie et al. 2014) is currently supported by the East Asian Observatory. DJE would like to dedicate this work to his auntie, Marjorie Eden.

REFERENCES

- André P. et al., 2010, *A&A*, 518, L102
 André P., Di Francesco J., Ward-Thompson D., Inutsuka S.-I., Pudritz R. E., Pineda J. E., 2014, in Beuther H., Klessen R. S., Dullemond C. P., Henning T., eds, *Protostars and Planets VI*. Univ. Arizona Press, Tucson, AZ, p. 27
 Berry D. S., 2015, *Astron. Comput.*, 10, 22
 Berry D. S., Reinhold K., Jenness T., Economou F., 2007, in Shaw R. A., Hill F., Bell D. J., eds, *ASP Conf. Ser. Vol. 376, Astronomical Data Analysis Software and Systems XVI*. Astron. Soc. Pac., San Francisco, p. 425
 Bintley D. et al., 2014, in *Proc. SPIE Conf. Ser. Vol. 9153, Millimeter, Submillimeter, and Far-Infrared Detectors and Instrumentation for Astronomy VII*. SPIE, Bellingham, p. 915303
 Brand J., Blitz L., 1993, *A&A*, 275, 67
 Bregman J. N., 1980, *ApJ*, 236, 577
 Chapin E. L., Berry D. S., Gibb A. G., Jenness T., Scott D., Tilanus R. P. J., Economou F., Holland W. S., 2013, *MNRAS*, 430, 2545
 Chrysostomou A., 2010, *Highlights Astron.*, 15, 797
 Currie M. J., Berry D. S., Jenness T., Gibb A. G., Bell G. S., Draper P. W., 2014, in Manset N., Forshay P., eds, *ASP Conf. Ser. Vol. 485, Astronomical Data Analysis Software and Systems XXIII*. Astron. Soc. Pac., San Francisco, p. 391
 Cutri R. M. et al., 2003, *The IRSA 2MASS All-Sky Point Source Catalog*, NASA/IPAC Infrared Science Archive. Available at: <http://irsa.ipac.caltech.edu/applications/Gator/>
 Cutri R. M. et al., 2013, *VizieR Online Data Catalog*, 2328
 Dame T. M., Hartmann D., Thaddeus P., 2001, *ApJ*, 547, 792
 Dempsey J. T., Thomas H. S., Currie M. J., 2013a, *ApJS*, 209, 8
 Dempsey J. T. et al., 2013b, *MNRAS*, 430, 2534

- Eden D. J., Moore T. J. T., Plume R., Morgan L. K., 2012, *MNRAS*, 422, 3178
- Eden D. J., Moore T. J. T., Morgan L. K., Thompson M. A., Urquhart J. S., 2013, *MNRAS*, 431, 1587
- Eden D. J., Moore T. J. T., Urquhart J. S., Elia D., Plume R., Rigby A. J., Thompson M. A., 2015, *MNRAS*, 452, 289
- Eden D. J. et al., 2017, *MNRAS*, 469, 2163
- Elia D. et al., 2017, *MNRAS*, 471, 100
- Fehér O., Juvela M., Lunttila T., Montillaud J., Ristorcelli I., Zahorecz S., Tóth L. V., 2017, *A&A*, 606, A102
- Gutermuth R. A., Heyer M., 2015, *AJ*, 149, 64
- Hartmann L., Burkert A., 2007, *ApJ*, 654, 988
- Heiderman A., Evans N. J., II, Allen L. E., Huard T., Heyer M., 2010, *ApJ*, 723, 1019
- Heitsch F., Hartmann L., 2008, *ApJ*, 689, 290
- Holland W. S. et al., 2013, *MNRAS*, 430, 2513
- Jackson J. M. et al., 2006, *ApJS*, 163, 145
- Jenness T., Berry D., Chapin E., Economou F., Gibb A., Scott D., 2011, in Evans I. N., Accomazzi A., Mink D. J., Rots A. H., eds, ASP Conf. Ser. Vol. 442, Astronomical Data Analysis Software and Systems XX. Astron. Soc. Pac., San Francisco, p. 281
- Juvela M. et al., 2012, *A&A*, 541, A12
- Juvela M. et al., 2018a, *A&A*, 612, A71
- Juvela M. et al., 2018b, *A&A*, 620, A26
- Kauffmann J., Bertoldi F., Bourke T. L., Evans N. J., II, Lee C. W., 2008, *A&A*, 487, 993
- Kerp J., Lenz D., Röhser T., 2016, *A&A*, 589, A123
- Kim J. et al., 2017, *ApJS*, 231, 9
- Könyves V. et al., 2015, *A&A*, 584, A91
- Lada C. J., Lombardi M., Alves J. F., 2010, *ApJ*, 724, 687
- Liu T., Wu Y., Zhang H., 2012, *ApJS*, 202, 4
- Liu T., Wu Y., Zhang H., 2013, *ApJ*, 775, L2
- Liu T. et al., 2015, *Publ. Korean Astron. Soc.*, 30, 79
- Liu T. et al., 2016, *ApJS*, 222, 7
- Liu T. et al., 2018a, *ApJS*, 234, 28
- Liu T. et al., 2018b, *ApJ*, 859, 151
- MacKenzie T. et al., 2011, *MNRAS*, 415, 1950
- Magnani L., Smith A. J., 2010, *ApJ*, 722, 1685
- Mairs S. et al., 2015, *MNRAS*, 454, 2557
- Malinen J. et al., 2014, *A&A*, 563, A125
- Marton G., Tóth L. V., Paladini R., Kun M., Zahorecz S., McGehee P., Kiss C., 2016, *MNRAS*, 458, 3479
- McGehee P. M., 2008, in Reipurth B., ed., Handbook of Star Forming Regions. Astron. Soc. Pac., San Francisco, p. 813
- Meng F., Wu Y., Liu T., 2013, *ApJS*, 209, 37
- Mitchell G. F., Johnstone D., Moriarty-Schieven G., Fich M., Tothill N. F. H., 2001, *ApJ*, 556, 215
- Molinari S. et al., 2010, *A&A*, 518, L100
- Montillaud J. et al., 2015, *A&A*, 584, A92
- Moore T. J. T., Urquhart J. S., Morgan L. K., Thompson M. A., 2012, *MNRAS*, 426, 701
- Moore T. J. T. et al., 2015, *MNRAS*, 453, 4264
- Nettke W. et al., 2017, *MNRAS*, 468, 250
- Padoan P., Nordlund Å., Kritsuk A. G., Norman M. L., Li P. S., 2007, *ApJ*, 661, 972
- Parikka A., Juvela M., Pelkonen V.-M., Malinen J., Harju J., 2015, *A&A*, 577, A69
- Planck Collaboration XXIII, 2011a, *A&A*, 536, A23
- Planck Collaboration XXIV, 2011b, *A&A*, 536, A24
- Planck Collaboration XXVIII, 2016, *A&A*, 594, A28
- Putman M. E., Peek J. E. G., Jounge M. R., 2012, *ARA&A*, 50, 491
- Rigby A. J. et al., 2016, *MNRAS*, 456, 2885
- Rivera-Ingraham A. et al., 2016, *A&A*, 591, A90
- Röhser T., Kerp J., Ben Bekhti N., Winkel B., 2016a, *A&A*, 592, A142
- Röhser T., Kerp J., Lenz D., Winkel B., 2016b, *A&A*, 596, A94
- Rumble D. et al., 2015, *MNRAS*, 448, 1551
- Sadavoy S. I. et al., 2013, *ApJ*, 767, 126
- Schuller F. et al., 2009, *A&A*, 504, 415
- Simpson R. J., Nutter D., Ward-Thompson D., 2008, *MNRAS*, 391, 205
- Tang M. et al., 2018, *ApJ*, 856, 141
- Tatematsu K. et al., 2017, *ApJS*, 228, 12
- Tóth L. V. et al., 2014, *PASJ*, 66, 17
- Urquhart J. S. et al., 2014, *MNRAS*, 443, 1555
- Urquhart J. S. et al., 2018, *MNRAS*, 473, 1059
- Veneziani M. et al., 2013, *A&A*, 549, A130
- Wang K. et al., 2018, *Res. Notes Am. Astron. Soc.*, 2, 2
- Ward-Thompson D. et al., 2007, *PASP*, 119, 855
- Wright E. L. et al., 2010, *AJ*, 140, 1868
- Wu Y., Liu T., Meng F., Li D., Qin S.-L., Ju B.-G., 2012, *ApJ*, 756, 76
- Yi H.-W. et al., 2018, *ApJS*, 236, 51
- Yuan J. et al., 2016, *ApJ*, 820, 37
- Zhang T., Wu Y., Liu T., Meng F., 2016, *ApJS*, 224, 43
- Zhang C.-P. et al., 2018, *ApJS*, 236, 49

SUPPORTING INFORMATION

Supplementary data are available at *MNRASJ* online.

Table1.txt

Please note: Oxford University Press is not responsible for the content or functionality of any supporting materials supplied by the authors. Any queries (other than missing material) should be directed to the corresponding author for the article.

¹Astrophysics Research Institute, Liverpool John Moores University, IC2, Liverpool Science Park, 146 Brownlow Hill, Liverpool L3 5RF, UK

²Centre for Astrophysics Research, Science & Technology Research Institute, University of Hertfordshire, College Lane, Hatfield, Herts AL10 9AB, UK

³Korea Astronomy and Space Science Institute, 776 Daedeokdae-ro, Yuseong-gu, Daejeon 34055, Republic of Korea

⁴East Asian Observatory, 660 N. Aohoku Place, University Park, Hilo, HI 96720, USA

⁵Department of Physics, University of Helsinki, P.O.Box 64, FI-00014, Helsinki, Finland

⁶Institute of Astronomy and Astrophysics, Academia Sinica. 11F of Astronomy-Mathematics Building, AS/NTU No.1, Section 4, Roosevelt Rd, Taipei 10617, Taiwan

⁷Nobeyama Radio Observatory, National Astronomical Observatory of Japan, National Institutes of Natural Sciences, Nobeyama, Minamimaki, Minamisaku, Nagano 384-1305, Japan

⁸NRC Herzberg Astronomy and Astrophysics, 5071 West Saanich Rd, Victoria, BC V9E 2E7, Canada

⁹Department of Physics and Astronomy, University of Victoria, Victoria, BC V8W 2Y2, Canada

¹⁰Kavli Institute for Astronomy and Astrophysics, Peking University, 5 Yiheyuan Road, Haidan District, Beijing 100871, China

¹¹Department of Astronomy, Peking University, 100871 Beijing, China

¹²Jodrell Bank Centre for Astrophysics, School of Physics and Astronomy, University of Manchester, Oxford Road, Manchester M13 9PL, UK

¹³National Astronomical Observatories, Chinese Academy of Sciences, Beijing 100012, China

¹⁴Key Laboratory of Radio Astronomy, Chinese Academy of Science, Nanjing 210008, China

¹⁵IRAP, Université de Toulouse, CNRS, UPS, CNES, 31400, Toulouse, France

¹⁶Max-Planck-Institut für Radioastronomie, Auf dem Hügel 69, D-53121 Bonn, Germany

¹⁷Yunnan Observatories, Chinese Academy of Sciences, 396 Yangfangwang, Guandu District, Kunming 650216, People's Republic of China

¹⁸Chinese Academy of Sciences South America Center for Astronomy, China-Chile Joint Center for Astronomy, Camino El Observatorio #1515, Las Condes, Casilla 36-D, Santiago, Chile

- ¹⁹Departamento de Astronomía, Universidad de Chile, Camino el Observatorio 1515, Las Condes, Casilla 36-D, Santiago, Chile
- ²⁰Department of Astronomy, Yunnan University, Key Laboratory of Astroparticle Physics of Yunnan Province, Kunming 650091, China
- ²¹Harvard-Smithsonian Center for Astrophysics, 60 Garden Street, Cambridge, MA 02138, USA
- ²²Jet Propulsion Laboratory, California Institute of Technology, 4800 Oak Grove Drive, Pasadena, CA 91109, USA
- ²³Department of Astronomy, The University of Texas at Austin, 2515 Speedway, Stop C1400, Austin, TX 78712-1205, USA
- ²⁴Department of Physics and Astronomy, The Open University, Walton Hall, Milton Keynes MK7 6AA, UK
- ²⁵RAL Space, STFC Rutherford Appleton Laboratory, Chilton, Didcot, Oxfordshire OX11 0QX, UK
- ²⁶Korea University of Science & Technology, 176 Gajeong-dong, Yuseong-gu, 34113, Daejeon, Republic of Korea
- ²⁷Department of Astronomy, Eötvös Loránd University, Pázmány Péter sétány 1/A, H-1117 Budapest, Hungary
- ²⁸Konkoly Observatory of the Hungarian Academy of Sciences, Konkoly Thege Miklós út 15-17, H-1121 Budapest, Hungary
- ²⁹School of Space Research, Kyung Hee University, Yongin-Si, Gyeonggi-Do 17104, Korea
- ³⁰SOFIA Science Center, Universities Space Research Association, NASA Ames Research Center, Moffett Field, CA 94035, USA
- ³¹School of Physics & Astronomy, Cardiff University, Queens Buildings, The Parade, Cardiff CF24 3AA, UK
- ³²Institute of Astronomy, National Central University, Jhongli 32001, Taiwan
- ³³Physical Research Laboratory, Navrangpura, Ahmedabad, Gujarat 380009, India
- ³⁴Department of Physics and Astronomy, University of Waterloo, Waterloo, ON N2L 3G1, Canada
- ³⁵Institute of Physics I, University of Cologne, Zùlpicher Str 77, D-50937 Cologne, Germany
- ³⁶Department of Operations, European Space Astronomy Centre (ESA/ESAC), Villanueva de la Cañada (Madrid), 28692, Spain
- ³⁷Department of Physics, The Chinese University of Hong Kong, Shatin, New Territory, Hong Kong, China
- ³⁸Departamento de Astronomía, Universidad de Concepción, Av. Esteban Iturra s/n, Distrito Universitario, 160-C, Concepción, Chile
- ³⁹Department of Astronomy, University of California, Berkeley, CA 94720, USA
- ⁴⁰Department of Physics and Astronomy, University College London, Gower Street, London WC1E 6BT, UK
- ⁴¹Max-Planck-Institut für Extraterrestrische Physik, Giessenbachstrasse 1, D-85748 Garching, Germany
- ⁴²Xinjiang Astronomical Observatory, Chinese Academy of Sciences, University of the Chinese Academy of Sciences, 150 Kexue 1st St., Xinshi Qu, Wulumuqi Shi, Xinjiang, Weiwuerzizhiqu, 830011, China
- ⁴³ESA/STScI, 3700 San Martin Drive, Baltimore, MD 21218 USA
- ⁴⁴Department of Physics, National Tsing Hua University, Guangfu Road, East District, Hsinchu City, Taiwan
- ⁴⁵Institut UTINAM, UMR 6213, CNRS, Univ Bourgogne Franche Comté, 32 Avenue de l'Observatoire, 25000 Besançon, France
- ⁴⁶Department of Physical Science, Graduate School of Science, Osaka Prefecture University, 1-1 Gakuen-cho, Naka-ku, Sakai, Osaka 599-8531, Japan
- ⁴⁷Chile Observatory, National Astronomical Observatory of Japan, National Institutes of Natural Science, 2-21-1 Osawa, Mitaka, Tokyo 181-8588, Japan
- ⁴⁸Center for Computational Sciences, The University of Tsukuba, 1-1-1, Tennodai, Tsukuba, Ibaraki 305-8577, Japan
- ⁴⁹School of Physics, University of New South Wales, Sydney, NSW 2052, Australia
- ⁵⁰Department of Physics, School of Science and Technology, Nazarbayev University, Astana 010000, Kazakhstan
- ⁵¹Department of Physics & Astronomy, University of Leicester, 1 University Road, Leicester LE1 7RH, UK
- ⁵²Department of Physics and Atmospheric Science, Dalhousie University, Halifax, NS B3H 4R2, Canada
- ⁵³Institute of Astronomy and Department of Physics, National Tsing Hua University, 300, Hsinchu, Taiwan
- ⁵⁴Key Laboratory for Research in Galaxies, and Cosmology, Shanghai Astronomical Observatory, Chinese Academy of Sciences, 80 Nandan Road, Shanghai 200030, China
- ⁵⁵Purple Mountain Observatory, Chinese Academy of Sciences, Nanjing 210008, China
- ⁵⁶Square Kilometre Array Organisation, Jodrell Bank Observatory, Lower Withington, Macclesfield, Cheshire SK11 9DL, UK
- ⁵⁷Department of Earth Science and Astronomy, Graduate School of Arts and Sciences, The University of Tokyo, 3-8-1 Komaba, Meguro, Tokyo 153-8902, Japan
- ⁵⁸LERMA, Observatoire de Paris, PSL Research University, CNRS, Sorbonne Universités, UPMC Univ. Paris 06, Ecole normale supérieure, F-75005 Paris, France
- ⁵⁹Konkoly Observatory, Research Centre for Astronomy and Earth Sciences, Hungarian Academy of Sciences, Konkoly Thege Miklós út 15-17, H-1121 Budapest, Hungary
- ⁶⁰Physikalisches Institut, Universität zu Köln, Zùlpicher Str 77, D-50937 Köln, Germany
- ⁶¹CSIRO Astronomy and Space Science, PO Box 76, Epping NSW, 1710, Australia
- ⁶²Department of Astronomy, Abdulaziz University, PO Box 80203, 21589 Jeddah, Saudi Arabia
- ⁶³UK Astronomy Technology Center, Royal Observatory, Blackford Hill, Edinburgh EH9 3HJ, UK; Institute for Astronomy, University of Edinburgh, Royal Observatory, Blackford Hill, Edinburgh EH9 3HJ, UK
- ⁶⁴School of Physics and Astronomy, Queen Mary University of London, Mile End Road, London E1 4NS, UK
- ⁶⁵Hiroshima Astrophysical Science Center, Hiroshima University, Kagamiyama, Higashi-Hiroshima, Hiroshima 739-8526, Japan
- ⁶⁶Department of Physical Science, Hiroshima University, Kagamiyama, Higashi-Hiroshima 739-8526, Japan
- ⁶⁷Department of Physics and Astronomy, Seoul National University, Gwanak-gu, Seoul 08826, Korea
- ⁶⁸Korea University of Science and Technology, 217 Gajeong-ro, Yuseong-gu, Daejeon 34113, Republic of Korea
- ⁶⁹Department of Earth Sciences, National Taiwan Normal University, 88 Section 4, Ting-Chou Road, Taipei 116, Taiwan
- ⁷⁰Department of Physics and Astronomy, McMaster University, Hamilton, ON L8S 4M1 Canada
- ⁷¹Infrared Processing Analysis Center, California Institute of Technology, 770 South Wilson Ave., Pasadena, CA 91125, USA
- ⁷²School of Astronomy and Space Science, Nanjing University, Nanjing 210023, China
- ⁷³Astrophysics Group, Cavendish Laboratory, J J Thomson Avenue, Cambridge CB3 0HE, UK
- ⁷⁴Graduate School of Informatics and Engineering, The University of Electro-Communications, Chofu, Tokyo 182-8585, Japan
- ⁷⁵Department of Physics and Astronomy, Graduate School of Science and Engineering, Kagoshima University, 1-21-35 Korimoto, Kagoshima 890-0065, Japan
- ⁷⁶Jeremiah Horrocks Institute for Mathematics, Physics and Astronomy, University of Central Lancashire, Preston PR1 2HE, UK
- ⁷⁷IAPS-INAF, via Fosso del Cavaliere 100, I-00133 Rome, Italy
- ⁷⁸International Centre for Radio Astronomy Research, Curtin University, GPO Box U1987, Perth, WA 6845, Australia
- ⁷⁹Aix Marseille Université, CNRS, LAM (Laboratoire d'Astrophysique de Marseille) UMR 7326, F-13388 Marseille, France

This paper has been typeset from a \LaTeX file prepared by the author.