

Central Lancashire Online Knowledge (CLoK)

Title	High-intensity interval training versus moderate-intensity steady-state training in UK cardiac rehabilitation programmes (HIIT or MISS UK): study protocol for a multicentre randomised controlled trial and economic evaluation
Type	Article
URL	https://clock.uclan.ac.uk/id/eprint/28531/
DOI	https://doi.org/10.1136/bmjopen-2016-012843
Date	2016
Citation	McGregor, Gordon, Nichols, Simon, Hamborg, Thomas, Bryning, Lucy, Tudor-Edwards, Rhiannon, Markland, David, Mercer, Jenny, Birkett, Stefan, Ennis, Stuart et al (2016) High-intensity interval training versus moderate-intensity steady-state training in UK cardiac rehabilitation programmes (HIIT or MISS UK): study protocol for a multicentre randomised controlled trial and economic evaluation. <i>BMJ Open</i> , 6 (11). e012843.
Creators	McGregor, Gordon, Nichols, Simon, Hamborg, Thomas, Bryning, Lucy, Tudor-Edwards, Rhiannon, Markland, David, Mercer, Jenny, Birkett, Stefan, Ennis, Stuart, Powell, Richard, Begg, Brian, Haykowsky, Mark J, Banerjee, Prithwish, Ingle, Lee, Shave, Rob and Backx, Karianne

It is advisable to refer to the publisher's version if you intend to cite from the work.
<https://doi.org/10.1136/bmjopen-2016-012843>

For information about Research at UCLan please go to <http://www.uclan.ac.uk/research/>

All outputs in CLoK are protected by Intellectual Property Rights law, including Copyright law. Copyright, IPR and Moral Rights for the works on this site are retained by the individual authors and/or other copyright owners. Terms and conditions for use of this material are defined in the <http://clock.uclan.ac.uk/policies/>

BMJ Open High-intensity interval training versus moderate-intensity steady-state training in UK cardiac rehabilitation programmes (HIIT or MISS UK): study protocol for a multicentre randomised controlled trial and economic evaluation

Gordon McGregor,^{1,2} Simon Nichols,³ Thomas Hamborg,⁴ Lucy Bryning,⁵ Rhiannon Tudor-Edwards,⁵ David Markland,⁶ Jenny Mercer,² Stefan Birkett,³ Stuart Ennis,^{1,2} Richard Powell,¹ Brian Begg,^{2,7} Mark J Haykowsky,⁸ Prithwish Banerjee,^{1,9} Lee Ingle,³ Rob Shave,² Karianne Backx²

To cite: McGregor G, Nichols S, Hamborg T, *et al*. High-intensity interval training versus moderate-intensity steady-state training in UK cardiac rehabilitation programmes (HIIT or MISS UK): study protocol for a multicentre randomised controlled trial and economic evaluation. *BMJ Open* 2016;**6**:e012843. doi:10.1136/bmjopen-2016-012843

► Prepublication history for this paper is available online. To view these files please visit the journal online (<http://dx.doi.org/10.1136/bmjopen-2016-012843>).

Received 26 May 2016
Revised 12 September 2016
Accepted 5 October 2016



CrossMark

For numbered affiliations see end of article.

Correspondence to

Dr Gordon McGregor;
Gordon.mcgregor@uhcw.nhs.uk

ABSTRACT

Introduction: Current international guidelines for cardiac rehabilitation (CR) advocate moderate-intensity exercise training (MISS, moderate-intensity steady state). This recommendation predates significant advances in medical therapy for coronary heart disease (CHD) and may not be the most appropriate strategy for the 'modern' patient with CHD. High-intensity interval training (HIIT) appears to be a safe and effective alternative, resulting in greater improvements in peak oxygen uptake ($VO_{2\text{ peak}}$). To date, HIIT trials have predominantly been proof-of-concept studies in the laboratory setting and conducted outside the UK. The purpose of this multicentre randomised controlled trial is to compare the effects of HIIT and MISS training in patients with CHD attending UK CR programmes.

Methods and analysis: This pragmatic study will randomly allocate 510 patients with CHD to 8 weeks of twice weekly HIIT or MISS training at 3 centres in the UK. HIIT will consist of 10 high-intensity (85–90% peak power output (PPO)) and 10 low-intensity (20–25% PPO) intervals, each lasting 1 min. MISS training will follow usual care recommendations, adhering to currently accepted UK guidelines (ie, >20 min continuous exercise at 40–70% heart rate reserve). Outcome measures will be assessed at baseline, 8 weeks and 12 months. The primary outcome for the trial will be change in $VO_{2\text{ peak}}$ as determined by maximal cardiopulmonary exercise testing. Secondary measures will assess physiological, psychosocial and economic outcomes.

Ethics and dissemination: The study protocol V.1.0, dated 1 February 2016, was approved by the NHS Health Research Authority, East Midlands—Leicester South Research Ethics Committee (16/EM/0079). Recruitment will start in August 2016 and will be completed in June 2018. Results will be published in peer-reviewed journals, presented at national and

Strengths and limitations of this study

- To ensure the findings are applicable to the 'real world', this study will adopt a pragmatic, multi-centre approach to assessing the efficacy of high-intensity interval training (HIIT) in UK cardiac rehabilitation (CR) programmes.
- This study will conduct a holistic, multidisciplinary investigation into the physiological, psychosocial and economic value of HIIT in patients with CHD.
- As a limitation, participants will only attend supervised exercise twice weekly for 8 weeks. This is suboptimal in relation to published data recommending three times per week for 12 weeks.

international scientific meetings and are expected to inform future national guidelines for exercise training in UK CR.

Trial registration number: NCT02784873; pre-results.

INTRODUCTION

Coronary heart disease (CHD) accounts for one-third of all deaths globally, totalling 7.4 million in 2013.¹ In the UK alone, ~175 000 myocardial infarctions (MI) are recorded annually.² While this is a significant number, advances in preventative therapy and medical treatment have contributed to an overall reduction in CHD mortality in the UK.³ An estimated 2.3 million people are now living with the disease,² and with a

growing population of CHD survivors, the need for comprehensive and cost-effective chronic disease management is ever more apparent.

Integral to the long-term management of CHD is the provision of cardiovascular rehabilitation (CR) programmes.^{4 5} Exercise training is considered a key component alongside risk factor management and facilitation of long-term behavioural change.⁴ Compelling evidence exists for CR programmes, with meta-analyses historically highlighting a favourable effect on functional capacity, health-related quality of life (HR-QoL), hospital admissions and mortality.^{6–8} The most recent data, however, do not confirm a survival benefit from participation in CR.⁹ This may relate to the ability of contemporary medical care, interventional cardiology and secondary prevention pharmacotherapy, to achieve much of what was previously attributed to CR. However, CR does improve HR-QoL and, as such, strategies to maximise long-term physical functioning (ie, optimised, personalised exercise training programmes) should be pursued in patients with CHD. Tangible benefits are realistic for the individual and an overburdened healthcare system, and CR programmes have a vital role to play in this regard.

In addition to improved medical care, the prescribed intensity of the exercise training interventions included in the recent meta-analysis by Anderson *et al*⁹ may help explain the lack of improvement in mortality rates with CR. Exercise intensity ranged from 50% to 95% of peak oxygen uptake ($\text{VO}_{2\text{ peak}}$), with the vast majority of protocols at the lower end of this range, that is, equivalent to moderate-intensity exercise ($\sim 46\text{--}64\%$ $\text{VO}_{2\text{ peak}}$).¹⁰ This is in line with current international exercise guidelines for CHD which advocate moderate-intensity training ($<80\%$ $\text{VO}_{2\text{ peak}}$) prescribed as either interval or steady state (MISS, moderate-intensity steady state).¹⁰ It is well known that greater improvements in $\text{VO}_{2\text{ peak}}$ can be expected with exercise training of a higher intensity and that a higher $\text{VO}_{2\text{ peak}}$ is associated with an improvement in mortality risk.^{11 12} Given that current guidelines predate significant advances in interventional cardiology and medical therapy, moderate-intensity exercise may be considered conservative and suboptimal for the 'modern' patient with CHD.¹³ Greater benefit may be attained by participating in high-intensity interval training (HIIT) involving repeated bursts of harder exercise interspersed with periods of recovery.^{14 15} High intensity, in this context, describes exercise performed above moderate intensity (ie, $>64\%$ $\text{VO}_{2\text{ peak}}$) as opposed to the maximal or supramaximal exercise specified in some protocols in healthy individuals.¹⁶

Meta-analyses have indicated the superiority ($\sim 1.7\text{ mL/kg/min}$) of HIIT over MISS for improvements in $\text{VO}_{2\text{ peak}}$ in patients with CHD.^{14 15 17} These analyses, however, are limited by small sample sizes and the significant heterogeneity of study populations and HIIT protocols. HIIT protocols can be modified in numerous ways (eg, modality, intensity, interval duration) to suit

the population or intended outcome,¹⁸ but there is no consensus as to the optimal configuration for the CHD population.¹⁷ In a landmark European study, high-intensity intervals lasting 4 min were deemed unfeasible in patients with CHD and offered no additional benefit over continuous training.¹⁹ As an alternative, low-volume HIIT uses 1 min intervals to provide intermittent metabolic stimulus with non-sustained cardiovascular stress. This appears to be safe and well tolerated in addition to being effective at improving $\text{VO}_{2\text{ peak}}$ in patients with CHD.^{20 21} The benefit of this 'low-volume HIIT' approach in 'real world' CR programmes in the UK, however, cannot be confirmed. Previous studies have generally been proof-of-concept studies conducted under 'laboratory' conditions. Carefully selected populations, tightly controlled exercise protocols and researcher-led interventions may limit the ecological validity of such studies. Likewise, substantial international variation in the provision and implementation of exercise-based CR may reduce the extent to which non-UK data can be applied to CR programmes in the UK.

The high-intensity interval training versus moderate-intensity steady-state training in UK Cardiac Rehabilitation trial (HIIT or MISS UK) is a pragmatic multicentre randomised controlled trial and economic evaluation comparing two CR exercise interventions. The primary objectives of the trial are:

1. To assess the effect of HIIT on $\text{VO}_{2\text{ peak}}$ and cardiovascular health.
2. To assess the acceptability of HIIT and the psychological and motivational factors associated with compliance and adherence.
3. To assess the effect of HIIT on lifestyle physical activity and a HR-QoL.
4. To conduct an economic evaluation of HIIT compared with MISS in CR programmes in the UK.
5. To assess the safety of HIIT.

In patients attending CR programmes in the UK, we hypothesise that HIIT will improve $\text{VO}_{2\text{ peak}}$ to a greater extent than MISS training. In this population, data relating to the effects of HIIT (particularly low-volume HIIT) on clinical, physiological, psychosocial and economic outcomes are limited but appear to indicate at least an equivalent effect.^{22–24} As such, we also hypothesise that HIIT will (1) be more acceptable than MISS and demonstrate greater patient compliance and adherence; (2) improve cardiovascular health to a greater extent than MISS; (3) improve HR-QoL to a greater extent than MISS; (4) lead to more positive motivation and attitudes to exercise than MISS; (5) increase short-term and medium-term participation in lifestyle physical activity to a greater extent than MISS; (6) be a cost-effective alternative to MISS and (7) be as safe as MISS.

METHODS AND ANALYSIS

The HIIT or MISS UK study is a pragmatic, single-blind, multicentre, longitudinal, randomised controlled trial

and economic evaluation. In line with the median UK CR programme duration of 8.5 weeks,²⁵ participants will be randomly allocated to 8 weeks of HIIT or MISS training (usual care). Outcomes will be measured at baseline, 8 weeks and 12 months by assessors blinded to group allocation. Study interventions will be delivered by clinical (not research) staff. The study is pragmatic in nature in that it will be conducted in existing CR programmes. It is, therefore, accepted that some variation in the delivery of usual care will be evident between study sites. This will ensure generalisability of the findings to UK CR programmes. The trial protocol adheres to the Standard Protocol Items: Recommendations for Clinical Trials (SPIRIT) guidelines.²⁶

Setting

The HIIT or MISS study will be conducted at three community CR centres; (1) Atrium Health, Centre for Exercise & Health, Coventry, (2) Department of Sport, Health & Exercise Science, University of Hull and Hull Royal Infirmary, Kingston-upon-Hull and (3) Ystrad Fawr Hospital, Ystrad Mynach, South Wales. Programmes are commissioned by University Hospitals Coventry & Warwickshire NHS Trust, City Healthcare Partnership CIC (Hull) and Aneurin Bevan University Health Board (South Wales), respectively. Starting August 2016, 510 CR patients will be recruited over a 2-year period.

Participants

The study will recruit patients with established coronary artery disease (CAD) referred for CR exercise training. Patients with MI, coronary artery bypass graft (CABG) surgery, angiographically documented CAD and elective percutaneous coronary intervention (PCI) will be eligible.

General inclusion criteria

1. Successfully revascularised following PCI or CABG.
2. Angiographically documented non-obstructive CAD.
3. Left ventricular ejection fraction >40%.
4. Clinically stable (symptoms and medication) for >2 weeks.
5. 18–75-year of age.

General exclusion criteria

1. Symptoms of ischaemia.
2. Significant left main stem stenosis.
3. NYHA class III–IV symptoms.
4. Compromising ventricular arrhythmia.
5. Significant valvular heart disease.
6. Inability to comply with guidelines for participation in exercise testing and training.^{27–29}
7. Significant limiting comorbidities that would prevent full participation.

Additional exclusion criteria

Further to the analysis of cardiopulmonary exercise test (CPET) and resting echocardiography by the research

team at baseline, and prior to randomisation, patients will be prevented from continuing their involvement in the study if there is indication of:

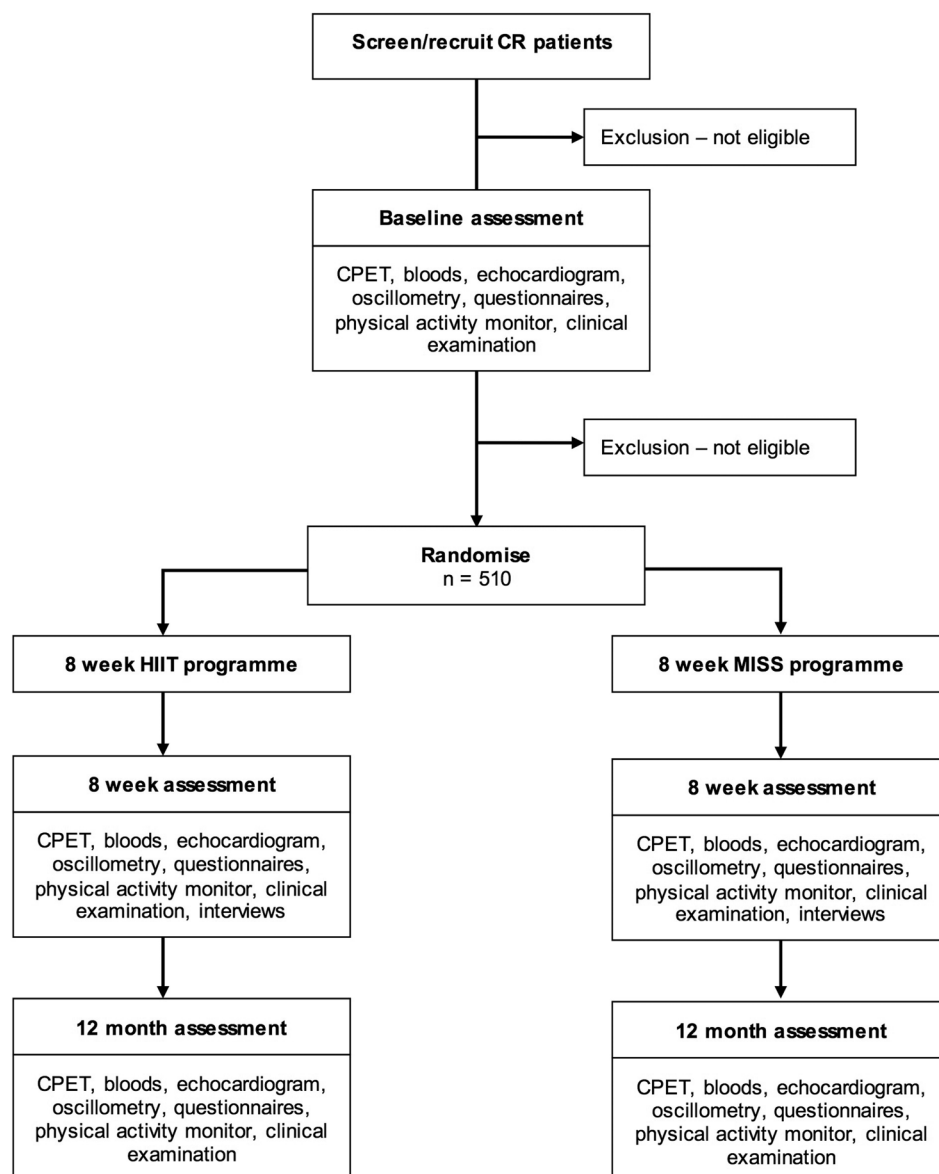
1. Exercise-induced ischaemia or significant haemodynamic compromise.
2. Left ventricular ejection fraction <40%.
3. Clinical instability in accordance with CR guidelines.^{27 29}
4. Inability to comply with guidelines for participation in exercise testing and training.^{28 29}

Study procedures

An outline of the participant pathway for the study is presented in [figure 1](#). Eligibility will be assessed by the research team at each site under the supervision of the local principal investigator (PI). Potential participants will be approached at their first outpatient CR appointment by a member of the study team: verbal and written information will be provided. A subsequent phone call (at least 48 hours later) will confirm those who wish to participate. Informed consent will be attained at the baseline assessment visit, which will coincide with an outpatient CR appointment. Baseline procedures will include CPET, echocardiogram, venipuncture, arterial oscillometry and clinical examination. Instruments to assess HR-QoL, health and social care use and the psychological and motivational factors associated with compliance and adherence will be administered, and a lifestyle physical activity monitor will be fitted (removed 1 week later). Further to the analysis of CPET and echocardiography at baseline, the local research team will rescreen potential participants for eligibility. Those who are ineligible will take no further part in the study but will continue with usual care CR. Eligible participants will subsequently be randomised to 8 weeks of twice weekly HIIT or MISS training. All measures completed at baseline will be repeated at 8 weeks and 12 months.

Interventions

The study will compare HIIT with current usual care in the UK—that is, moderate-intensity interval training progressing towards moderate-intensity steady-state (MISS) training.²⁹ [Table 1](#) provides a summary of both interventions, and [table 2](#) details the framework within which the HIIT intervention will be progressed. Participants will attend twice weekly CR exercise sessions for 8 weeks, performing either HIIT or MISS training for the cardiovascular component of their programme. In accordance with current UK standards,²⁹ a muscular strength and endurance training programme will also be completed by both study groups, and participation in additional home-based exercise recommended as standard. Participants who are unable/unwilling to comply with the HIIT protocol will be permitted to cease involvement in the HIIT intervention and continue with usual care CR (not as part of the trial). Where two or more consecutive training sessions are missed, the intervention period can be extended to 10 weeks. As is commonplace for CR programmes in the UK, there will be some

Figure 1 Study flow chart.

variation in the structure and delivery of the MISS intervention at each of the study sites. This is in keeping with the pragmatic nature of the trial. Each centre will, however, adhere to current UK standards.²⁹

The following exercise training criteria must be satisfied for participants to be regarded as having sufficiently adhered to the treatment protocol:

- ▶ A minimum of 80% of sessions completed (13 of 16).
- ▶ HIIT—10×1 min protocol achieved by week 4.
- ▶ MISS—20 min continuous CV exercise achieved by week 4.

The number of participants who do not meet the above criteria will be recorded.

Randomisation and blinding

Trial participants will be randomised to HIIT or MISS on a 1:1 basis. The random allocation sequence will be generated by the trial statistician using a random number generator and implemented by a central

telephone registration and randomisation service at Warwick Clinical Trials Unit. Randomisation will be stratified by site using random permuted blocks randomisation within each site to ensure approximately equal numbers of patients are allocated to HIIT and MISS. To ensure allocation concealment, researchers will request randomisation on completion of all baseline assessments. Outcome assessors will be blinded to group allocation, as will the trial statistician. Clinical staff delivering the interventions cannot be blinded, however, they will not be involved in data analysis or reporting.

Study outcome measures

The primary outcome measure is the change in peak oxygen uptake ($\text{VO}_{2\text{ peak}}$) at 8 weeks. A number of secondary outcome measures will also be assessed, namely (1) acceptability and the motivational and attitudinal factors associated with compliance and adherence; (2) HR-QoL; (3) service and resource use; (4) lifestyle

Table 1 Comparison of HIIT and MISS training interventions

HIIT	MISS
<p>► Exercise sessions conducted as follows:</p> <ol style="list-style-type: none"> 1. <i>Warm up</i>: 15 min total, 10 min <40% HRR, 5 min <70% HRR. 2. <i>Cardiovascular component</i>: exercise cycle ergometer interval training (Wattbike Trainer; Wattbike, Nottingham, UK): high=85–90% PPO from CPET, low=20–25% PPO (exercise intensity will not be prescribed from gas exchange data, ie, %VO_{2 peak}). Change in intensity from low to high achieved by altering cadence (rpm). Exercise HR will not exceed HR_{max} from CPET. 3. <i>Cool down</i>: 10 min, <40% HRR. <p>► Duration of intervals and total programme duration increased within a standardised framework (table 2).</p> <p>► Workload increased bi-weekly in response to participant reported RPE (only after the full 10×1 protocol has been achieved). If RPE <17 during the last two high-intensity intervals, then workload will be increased.</p>	<p>► Exercise sessions conducted in accordance with BACPR/ACPICR standards,²⁹ adhering to the following key principles:</p> <ol style="list-style-type: none"> 1. <i>Warm up</i>: 15 min, <40% HRR. 2. <i>Cardiovascular component</i>: moderate-intensity interval training progressing towards 20–40 min continuous cardiovascular exercise at 40–70% HRR (from CPET) and RPE 12–14. 3. <i>Cool down</i>: 10 min, <40% HRR. <p>► Initial duration based on participant's previous and current PA levels and CPET performance.</p> <p>► Duration and workload of cardiovascular component adjusted, as tolerated, within the above parameters, in response to exercising HR, participant reported RPE and symptoms. As per current practice, priority will be given to increasing duration until 20 min of continuous exercise has been achieved. Thereafter, workload can be increased in conjunction with duration.</p>

CPET, cardiopulmonary exercise test; HIIT, high-intensity interval training; HR, heart rate; HRR, heart rate reserve; MISS, moderate-intensity steady state; PA, physical activity; PPO, peak power output; RPE, rating of perceived exertion; VO_{2 peak}, peak oxygen uptake.

physical activity; (5) cardiovascular reserve; (6) cardiac remodelling; (7) arterial remodelling; (8) cardiovascular health and (9) safety. Table 3 provides the complete schedule for outcome assessment.

Cardiopulmonary exercise testing will be performed to measure VO_{2 peak} and other parameters representative of cardiovascular reserve. Tests will be conducted using a standard bicycle ramp protocol in accordance with American Thoracic Society guideline.³⁰ Participants will be encouraged to maintain a cadence of 70 rpm until symptom-limited volitional fatigue prevents continuation. Criteria for the assessment of a good participant effort will include peak respiratory exchange ratio (RER) >1.10, peak HR≥85% predicted and RPE ≥18.³¹

Compliance and adherence will be determined by recording the number of training sessions attended and successfully completed in accordance with the exercise protocol. Drop-out from the programme will also be documented for both study groups in addition to reason for drop-out, where provided voluntarily by participants. To assess the psychological and motivational factors associated with compliance and adherence to the exercise

training interventions, the predictive effects of self-efficacy, motivation, need satisfaction and implicit and explicit attitudes and, reciprocally, the effects of training on self-efficacy, motivation, need satisfaction and implicit and explicit attitudes, will be quantitatively measured using validated tools: (1) the Multidimensional Self-Efficacy for Exercise Scale (MSES);³² (2) the Behavioural Regulation in Exercise Questionnaire-2 (BREQ-2);³³ (3) the Psychological Need Satisfaction in Exercise Scale (PNSES);³² (4) Courneya and Bobick's 7-point Bipolar Adjectival Rating Scale³⁴ and (5) a Single-Category Implicit Association Test (SC-IAT).³⁵ Semistructured interviews will qualitatively evaluate acceptability in a subgroup of 40 patients, representative of completers and drop-outs in both intervention groups. Verbatim transcripts will be thematically analysed.³⁶

Health-related quality of life will be assessed with the five-item EuroQoL (EQ-5D-5L),³⁷ as recommended by the National Institute for Health and Care Excellence in the UK for economic evaluation in clinical trials.³⁸ General population preference-based tariffs for the UK

Table 2 Breakdown of HIIT training programme by week

Week	High-intensity intervals (number×time in min)	Low-intensity intervals (number×time in min)	Total high-intensity exercise (min)	Total low-intensity exercise (min)	Total exercise time (min)
1	5×0.5	5×1	2.5	5	7.5
2	5×1	5×1	5	5	10
3	7×1	7×1	7	7	14
4–8	10×1	10×1	10	10	20

HIIT, high-intensity interval training.

Table 3 Outcome measures and assessment schedule

Measure	Instrument	Assessment time point
Primary outcome		
VO _{2 peak}	CPET	Baseline, 8 weeks, 12 months
Secondary outcomes		
Compliance, adherence	Compliance/adherence/drop-out rates	Continuous
	MSES	Baseline, 8 weeks, 12 months
	BREQ-2	Baseline, 8 weeks, 12 months
	PNSSES	Baseline, 8 weeks, 12 months
	Bipolar adjectival rating scale	Baseline, 8 weeks, 12 months
	SC-IAT	Baseline, 8 weeks, 12 months
Acceptability	Semistructured interviews	8 weeks
HR-QOL	EQ-5D	Baseline, 8 weeks, 12 months
Service and resource use	CSRI	Baseline, 8 weeks, 12 months
Lifestyle physical activity	Physical activity monitor	Baseline, 8 weeks, 12 months
Cardiovascular reserve	CPET	Baseline, 8 weeks, 12 months
Cardiac remodelling	Echocardiography	Baseline, 8 weeks, 12 months
Arterial remodelling	Arterial oscillometry	Baseline, 8 weeks, 12 months
Cardiovascular health	Clinical examination	Baseline, 8 weeks, 12 months
	Blood sampling	Baseline, 8 weeks, 12 months
Safety	Adverse event monitoring	Continuous

BREQ-2, Behavioural Regulation in Exercise Questionnaire-2; CPET, cardiopulmonary exercise test; CSRI, client service receipt inventory; EQ-5D, 5 item EuroQol; HR-QoL, health-related quality of life; MSES, Multidimensional Self-Efficacy for Exercise Scale; PNSSES, Psychological Need Satisfaction in Exercise Scale; SC-IAT, Single-Category Implicit Association Test; VO_{2 peak}, peak oxygen uptake.

allow for the comparison of EQ-5D index scores with population norms and other health conditions.³⁹ An adapted client service receipt inventory (CSRI), based on examples in the DIRUM database,⁴⁰ will be administered at each time point to capture participant health and social care service use since the last time point (plus a retrospective 2-month period at baseline).

Lifestyle physical activity will be recorded over a 7-day period with an ActiGraph GT9X Link (Actigraph, Pensacola, Florida, USA) worn on the wrist. Comprehensive evaluation of participants' daily physical activity patterns will be derived from the unit's 3-axis accelerometer, magnetometer and gyroscope. The Actigraph GT9X Link is considered the gold standard in non-invasive research grade physical activity monitoring and has been extensively validated.

To quantify cardiac remodelling, echocardiographic images will be obtained and analysed as recommended in current guidelines.^{41 42} To assess cardiac structure and function (systolic and diastolic), standard techniques will be used including 2D, M-mode, pulse wave Doppler and tissue Doppler echocardiography. To investigate arterial remodelling, pulse wave velocity will be determined through the non-invasive method of brachial oscillometry (Mobil-O-Graph PWA Monitor, IEM GmbH, Stolberg, Germany). A blood pressure cuff will be placed on the participant's upper left arm and will inflate and deflate automatically. Mobil-O-Graph PWA has been validated against internationally recognised invasive and non-invasive gold standards.⁴³

Standard clinical examination will include medical history, stature, body mass and cardiovascular risk factor assessment, that is, resting blood pressure, diabetes,

family history of premature CHD and smoking status. Blood sampling will be performed to allow the measurement of biomarkers of cardiovascular and metabolic health. Routine testing will include full blood cell count, liver function, urea and electrolytes, glycaemic control and a full lipid profile. Serum and plasma will be stored for the analysis of current and emerging biochemical markers of cardiovascular and metabolic health relating to inflammation, cardiac remodelling, pro-thrombosis, endocrine function and lipids.^{44 45}

To verify the safety of HIIT and MISS training performed in CR, adverse and serious adverse events will be carefully monitored, recorded and reported. In line with the principles of Good Clinical Practice, the nature and severity of the event, in addition to its potential association with the exercise training intervention, will be ascertained by the local PI and ratified by the trial clinician.⁴⁶

Sample size

Given the pragmatic nature of the trial, a 1.5 mL/kg/min larger improvement of VO_{2 peak} in the HIIT group compared to the MISS group is considered a clinically relevant difference. Keteyian and colleagues reported a reduction of ~15% in all-cause mortality for each 1 mL/kg/min increase in VO_{2 peak} in a large CR cohort with revascularised coronary disease.⁴⁷ In the present study, a sample size of 191 patients in each group will be sufficient to detect this difference assuming a SD of 4.5 mL/kg/min, a power of 90% and a significance level of 5%. The assumed SD is based on observations from Conraads *et al.*¹⁹ This trial is similar to HIIT or MISS and reported a loss to follow-up from baseline to post-

intervention of 13%. A conservative drop-out of ~25% yields a required sample size of 510 patients (255 per group) to be randomised. Should the drop-out rate at 12 months be 50%, then the study would retain power of 76% to detect a difference of 1.5 mL/kg/min in the primary outcome at this time point using the aforementioned assumptions.

Data collection and management

Study data will be collected on a case report form by the research team at baseline, 8 weeks and 12 months. Each participant will be allocated a unique study ID number; a list of participants will be stored electronically by UHCW NHS Trust. Data will be anonymously entered into REDCap (Research Electronic Data Capture),⁴⁸ a secure, web-based application designed to support data capture for research studies. This will be hosted by Cardiff Metropolitan University.

Statistical analysis

The primary end point for the statistical analysis is the mean change in VO_2 peak (mL/kg/min) from baseline to 8 weeks of follow-up. The primary end point will be compared between intervention arms using a general linear model with the treatment group and baseline VO_2 peak fitted as covariates, and 8-week VO_2 peak as the dependant variable. The linear model will be adjusted for the continuous covariate age, and the categorical covariates sex and study site. Further adjustment variables may be investigated as part of the exploratory analysis. The robustness of the primary outcome analysis will be investigated using three standard multiple imputation methods (monotone regression, fully conditional specification regression and Markov chain Monte Carlo (MCMC)).

The secondary outcome measures will be analysed using the same covariates as the primary outcome analysis. Likewise, the differences between groups in terms of continuous secondary outcome measures will be assessed with the same statistical model as the primary outcome analysis. Differences between treatment arms for binary, unordered categorical and ordinal secondary outcome variables will be analysed using logistic regression, multinomial logistic regression and proportional odds models, respectively.

The primary and secondary outcome analyses will be conducted at the conventional (two-sided) 5% level. To reduce the risk of false-positive claims, all secondary analyses will be considered to be exploratory if a non-significant result is obtained from the primary analysis and, whenever reported, the failure to achieve a significant result in the primary analysis will be declared. It is not proposed to formally adjust for multiple testing among the secondary end points as these are likely to be correlated so that standard adjustment techniques such as the Bonferroni method would be conservative. All analyses will be performed on an intention-to-treat basis. A *per protocol* analysis will be conducted as an exploratory

analysis, as will subgroup analyses (for subgroups prespecified in the protocol) and repeated measures mixed models.

All data will be summarised and reported in accordance with the Consolidated Standards of Reporting Trials (CONSORT) guideline.⁴⁹ No formal interim analyses are anticipated.

Economic evaluation

In line with the National Institute for Health and Clinical Excellence (NICE) guidance on the economic evaluation of public health interventions,⁵⁰ from a societal perspective, a cost-consequence analysis of HIIT (embedded within CR) compared with MISS training (representing usual care) will be undertaken. Within the cost-consequence analysis, there will be an embedded cost-utility analysis, using Quality Adjusted Life Years (QALYs) gained with HR-QoL weights drawn from EQ-5D-5L. This approach has been chosen because QALYs allow comparison with the value for money of other medical and public health interventions but do not capture the full range of relevant outcomes in public health prevention.⁵⁰ We will use STATA V.14 to bootstrap (5000 replications) the differences in cost and outcomes, to produce a 95% CI, cost-effectiveness planes and cost-effectiveness acceptability curves, to present to healthcare policymakers and local commissioners the probability that the intervention is cost-effective at different payer thresholds.

The health economics component of the study will be written up in accordance with the Consolidated Health Economic Evaluation Reporting Standards (CHEERS) statement for the reporting of published economic evaluations.⁵¹

Patient and public involvement

Patient and public involvement has been integral to protocol development. A formal consultation event was attended by a representative sample of current CR participants in August 2015. Participants were introduced to various different approaches to exercise training and asked to comment on their suitability. A range of opinions and views were recorded with the overriding sentiment being that participants would be prepared to engage in HIIT with minimal concern. Close supervision by experienced CR exercise professionals was considered essential. The only significant negative comment related to the fact that HIIT would be performed solely on an exercise bike as opposed to a range of cardiovascular exercise equipment. However, participants confirmed that they would be prepared to tolerate this in the short term. Two CR participants will sit on the trial steering group for the duration of the trial.

Dissemination and impact

Throughout the trial, media outlets (including social media) will be informed of progress, and the experiences gained will be presented at national conferences

and non-academic outlets such as national governing body publications. On completion, the study results will be published in peer-reviewed journals and presented at scientific meetings. The results will also be disseminated in newsletter form throughout the UK via national governing bodies and at local research and patient conference events. It is anticipated that the results of the study will inform future national guidelines for exercise training in UK CR.

Author affiliations

¹Department of Cardiac Rehabilitation, Centre for Exercise & Health, University Hospital, Coventry, UK

²Cardiff Centre for Exercise & Health, Cardiff Metropolitan University, Cardiff, UK

³Department of Sport, Health & Exercise Science, University of Hull, Hull, UK

⁴Statistics and Epidemiology, Division of Health Sciences, Warwick Medical School, University of Warwick, Warwick, UK

⁵Centre for Health Economics and Medicines Evaluation, Bangor University, Bangor, Gwynedd, UK

⁶School of Sport, Health & Exercise Sciences, Bangor University, Bangor, Gwynedd, UK

⁷Aneurin Bevan University Health Board, Gwent, Wales, UK

⁸College of Nursing and Health Innovation, University of Texas at Arlington, Arlington, Texas, USA

⁹School of Health & Life Sciences, Coventry University, Coventry, UK

Twitter Follow Gordon McGregor at @HITorMISSUK

Contributors GM is the chief investigator for the trial, leading on protocol writing, ethics application and manuscript preparation. GM, KB, RS, SN, LI, SE, RP, SB, MJH, BB, TH and PB all contributed fully to study design. TH (statistics), RT-E, LB (health economics), DM (quantitative psychology) and JM (qualitative psychology) provided expertise in their respective discipline and authored the relevant section of the protocol and manuscript. KB, RS and SN edited the manuscript. All authors read and approved the final version of the manuscript.

Competing interests None declared.

Ethics approval The study protocol V.1.0, dated 1 February 2016, was approved by the NHS Health Research Authority, East Midlands—Leicester South Research Ethics Committee on 4 March 2016 (16/EM/0079).

Provenance and peer review Not commissioned; externally peer reviewed.

Open Access This is an Open Access article distributed in accordance with the Creative Commons Attribution Non Commercial (CC BY-NC 4.0) license, which permits others to distribute, remix, adapt, build upon this work non-commercially, and license their derivative works on different terms, provided the original work is properly cited and the use is non-commercial. See: <http://creativecommons.org/licenses/by-nc/4.0/>

REFERENCES

- WHO. *The top 10 causes of death. Fact sheet No. 310*. World Health Organization, 2014. <http://www.who.int/mediacentre/factsheets/fs310/en/> (updated May 2014).
- BHF. Coronary Heart Disease Statistics. A compendium of health statistics. 2012 edition, 2012.
- Allender S, Scarborough P, O'Flaherty M, *et al*. Patterns of coronary heart disease mortality over the 20th century in England and Wales: possible plateaus in the rate of decline. *BMC Public Health* 2008;8:148.
- Buckley JP, Furze G, Doherty P, *et al*. BACPR scientific statement: British standards and core components for cardiovascular disease prevention and rehabilitation. *Heart* 2013;99:1069–71.
- NICE. *Secondary prevention after a myocardial infarction*. NICE quality standard (QS99), 2015. <https://www.nice.org.uk/guidance/qs99>
- Valkeinen H, Aaltonen S, Kujala UM. Effects of exercise training on oxygen uptake in coronary heart disease: a systematic review and meta-analysis. *Scand J Med Sci Sports* 2010;20:545–55.
- Lawler PR, Filion KB, Eisenberg MJ. Efficacy of exercise-based cardiac rehabilitation post-myocardial infarction: a systematic review and meta-analysis of randomized controlled trials. *Am Heart J* 2011;162:571–84.e2.
- Heran BS, Chen JM, Ebrahim S, *et al*. Exercise-based cardiac rehabilitation for coronary heart disease. *Cochrane Database Syst Rev* 2011;(7):CD001800.
- Anderson L, Oldridge N, Thompson DR, *et al*. Exercise-based cardiac rehabilitation for coronary heart disease: Cochrane systematic review and meta-analysis. *J Am Coll Cardiol* 2016;67:1–12.
- ACSM. *Guidelines for exercise testing and prescription*. 9th edn. Lippincott Williams & Wilkins, 2014.
- Kodama S, Saito K, Tanaka S, *et al*. Cardiorespiratory fitness as a quantitative predictor of all-cause mortality and cardiovascular events in healthy men and women: a meta-analysis. *JAMA* 2009;301:2024–35.
- Garber CE, Blissmer B, Deschenes MR, *et al*. American College of Sports Medicine position stand. Quantity and quality of exercise for developing and maintaining cardiorespiratory, musculoskeletal, and neuromotor fitness in apparently healthy adults: guidance for prescribing exercise. *Med Sci Sports Exerc* 2011;43:1334–59.
- West RR, Jones DA, Henderson AH. Rehabilitation After Myocardial Infarction Trial (RAMIT): multi-centre randomised controlled trial of comprehensive cardiac rehabilitation in patients following acute myocardial infarction. *Heart* 2012;98:637–44.
- Liou K, Ho S, Fildes J, *et al*. High intensity interval versus moderate intensity continuous training in patients with coronary artery disease: a meta-analysis of physiological and clinical parameters. *Heart Lung Circ* 2016;25:166–74.
- Elliott AD, Rajopadhyaya K, Bentley DJ, *et al*. Interval training versus continuous exercise in patients with coronary artery disease: a meta-analysis. *Heart Lung Circ* 2015;24:149–57.
- Gillen JB, Martin BJ, MacInnis MJ, *et al*. Twelve weeks of sprint interval training improves indices of cardiometabolic health similar to traditional endurance training despite a five-fold lower exercise volume and time commitment. *PLoS One* 2016;11:e0154075.
- Pattyn N, Coeckelberghs E, Buys R, *et al*. Aerobic interval training vs. moderate continuous training in coronary artery disease patients: a systematic review and meta-analysis. *Sports Med* 2014;44:687–700.
- Gibala MJ, Little JP, Macdonald MJ, *et al*. Physiological adaptations to low-volume, high-intensity interval training in health and disease. *J Physiol* 2012;590(Pt 5):1077–84.
- Conraads VM, Pattyn N, De Maeyer C, *et al*. Aerobic interval training and continuous training equally improve aerobic exercise capacity in patients with coronary artery disease: the SAINTEX-CAD study. *Int J Cardiol* 2015;179:203–10.
- Currie KD, Dubberley JB, McKelvie RS, *et al*. Low-volume, high-intensity interval training in patients with CAD. *Med Sci Sports Exerc* 2013;45:1436–42.
- Currie KD, Bailey KJ, Jung ME, *et al*. Effects of resistance training combined with moderate-intensity endurance or low-volume high-intensity interval exercise on cardiovascular risk factors in patients with coronary artery disease. *J Sci Med Sport* 2015;18:637–42.
- Aamot IL, Karlsten T, Dalen H, *et al*. Long-term exercise adherence after high-intensity interval training in cardiac rehabilitation: a randomized study. *Physiother Res Int* 2016;21:54–64.
- Pattyn N, Vanhees L, Cornelissen VA, *et al*. The long-term effects of a randomized trial comparing aerobic interval versus continuous training in coronary artery disease patients: 1-year data from the SAINTEX-CAD study. *Eur J Prev Cardiol* 2016;23:1154–64.
- Ribeiro PA, Boidin M, Juneau M, *et al*. High-intensity interval training in patients with coronary heart disease: prescription models and perspectives. *Ann Phys Rehabil Med* 2016. doi:10.1016/j.rehab.2016.04.004
- The National Audit of Cardiac Rehabilitation Annual Statistical Report. 2015. http://www.cardiacrehabilitation.org.uk/docs/BHF_NACR_Report_2015.pdf
- Chan AW, Tetzlaff JM, Altman DG, *et al*. SPIRIT 2013 statement: defining standard protocol items for clinical trials. *Ann Intern Med* 2013;158:200–7.
- AACVPR. *Guidelines for cardiac rehabilitation and secondary prevention programs*. 4th edn. Champaign (IL): Human Kinetics, 2003.
- ACSM. *Guidelines for exercise testing and prescription*. 8th edn. Riverwoods (IL): Lippincott Williams & Wilkins, 2009.

29. ACPICR. Standards for physical activity and exercise in the cardiac population. 2015. http://acpicr.com/sites/default/files/ACPICR%20Standards%202015_0.pdf
30. Ross RM. ATS/ACCP statement on cardiopulmonary exercise testing. *Am J Respir Crit Care Med* 2003;167:1451; author reply 51.
31. Balady GJ, Arena R, Sietsema K, *et al.* Clinician's guide to cardiopulmonary exercise testing in adults: a scientific statement from the American Heart Association. *Circulation* 2010;122:191–225.
32. Rodgers WM, Wilson PM, Hall CR, *et al.* Evidence for a multidimensional self-efficacy for exercise scale. *Res Q Exerc Sport* 2008;79:222–34.
33. Markland D, Tobin V. A modification of the Behavioral Regulation in Exercise Questionnaire to include an assessment of amotivation. *J Sport Exerc Psychol* 2004;26:191–6.
34. Courneya KS, Bobick TM. Integrating the theory of planned behaviour with processes and stages of change in the exercise domain. *Psychol Sport Exerc* 2000;1:41–56.
35. Karpinski A, Steinman RB. The single category implicit association test as a measure of implicit social cognition. *J Pers Soc Psychol* 2006;91:16–32.
36. Clarke BA. *Successful qualitative research*. London: Sage, 2013.
37. The EuroQol Group. *EQ-5D user guide*. Rotterdam, The Netherlands: The EuroQol Group, 1996.
38. NICE. Guide to the methods of technology appraisal. 2013. <http://www.nice.org.uk/article/pmg9/resources/non-guidance-guide-to-the-methods-of-technology-appraisal-2013-pdf>
39. Kind P, Hardman G, Macran S. *UK Population Norms for EQ-5D*. Discussion Paper 172. UK: Centre for Health Economics Discussion Paper Series, University of York, 1999.
40. Ridyard CH, Hughes DA. Methods for the collection of resource use data within clinical trials: a systematic review of studies funded by the UK Health Technology Assessment program. *Value Health* 2010;13:867–72.
41. Nagueh SF, Smiseth OA, Appleton CP, *et al.* Recommendations for the evaluation of left ventricular diastolic function by echocardiography: an update from the American Society of Echocardiography and the European Association of Cardiovascular Imaging. *J Am Soc Echocardiogr* 2016;29:277–314.
42. Lang RM, Badano LP, Mor-Avi V, *et al.* Recommendations for cardiac chamber quantification by echocardiography in adults: an update from the American Society of Echocardiography and the European Association of Cardiovascular Imaging. *J Am Soc Echocardiogr* 2015;28:1–39.e14.
43. Luzardo L, Lujambio I, Sottolano M, *et al.* 24-h ambulatory recording of aortic pulse wave velocity and central systolic augmentation: a feasibility study. *Hypertens Res* 2012;35:980–7.
44. Vasan RS. Biomarkers of cardiovascular disease: molecular basis and practical considerations. *Circulation* 2006;113:2335–62.
45. Montgomery JE, Brown JR. Metabolic biomarkers for predicting cardiovascular disease. *Vasc Health Risk Manag* 2013;9:37–45.
46. ICH Harmonised Tripartite guideline—guideline for good clinical practice E6 (R1). 1996. <http://www.ich.org/products/guidelines/efficacy/efficacy-single/article/good-clinical-practice.html>
47. Keteyian SJ, Brawner CA, Savage PD, *et al.* Peak aerobic capacity predicts prognosis in patients with coronary heart disease. *Am Heart J* 2008;156:292–300.
48. Harris PA, Taylor R, Thielke R, *et al.* Research electronic data capture (REDCap)—a metadata-driven methodology and workflow process for providing translational research informatics support. *J Biomed Inform* 2009;42:377–81.
49. Moher D, Hopewell S, Schulz KF, *et al.* CONSORT 2010 explanation and elaboration: updated guidelines for reporting parallel group randomised trials. *BMJ* 2010;340:c869.
50. NICE. *Methods for the development of NICE public health guidance*. 3rd ed. NICE article [pmg4], 2012. <https://www.nice.org.uk/article/pmg4/chapter/1%20introduction>
51. Husereau D, Drummond M, Petrou S, *et al.* Consolidated Health Economic Evaluation Reporting Standards (CHEERS) statement. *BMJ* 2013;346:f1049.

BMJ Open

High-intensity interval training versus moderate-intensity steady-state training in UK cardiac rehabilitation programmes (HIIT or MISS UK): study protocol for a multicentre randomised controlled trial and economic evaluation

Gordon McGregor, Simon Nichols, Thomas Hamborg, Lucy Bryning, Rhiannon Tudor-Edwards, David Markland, Jenny Mercer, Stefan Birkett, Stuart Ennis, Richard Powell, Brian Begg, Mark J Haykowsky, Prithwish Banerjee, Lee Ingle, Rob Shave and Karianne Backx

BMJ Open 2016 6:
doi: 10.1136/bmjopen-2016-012843

Updated information and services can be found at:
<http://bmjopen.bmj.com/content/6/11/e012843>

These include:

References

This article cites 35 articles, 8 of which you can access for free at:
<http://bmjopen.bmj.com/content/6/11/e012843#BIBL>

Open Access

This is an Open Access article distributed in accordance with the Creative Commons Attribution Non Commercial (CC BY-NC 4.0) license, which permits others to distribute, remix, adapt, build upon this work non-commercially, and license their derivative works on different terms, provided the original work is properly cited and the use is non-commercial. See: <http://creativecommons.org/licenses/by-nc/4.0/>

Email alerting service

Receive free email alerts when new articles cite this article. Sign up in the box at the top right corner of the online article.

Topic Collections

Articles on similar topics can be found in the following collections

[Cardiovascular medicine](#) (659)
[Health economics](#) (284)
[Qualitative research](#) (586)
[Rehabilitation medicine](#) (245)
[Sports and exercise medicine](#) (185)

Notes

To request permissions go to:
<http://group.bmj.com/group/rights-licensing/permissions>

To order reprints go to:
<http://journals.bmj.com/cgi/reprintform>

To subscribe to BMJ go to:
<http://group.bmj.com/subscribe/>