

## Central Lancashire Online Knowledge (CLoK)

Title	Erratum: ALMA reveals the aftermath of a white dwarf-brown dwarf merger in CK Vulpeculae
Type	Article
URL	<a href="https://clock.uclan.ac.uk/30489/">https://clock.uclan.ac.uk/30489/</a>
DOI	<a href="https://doi.org/10.1093/mnras/stz2890">https://doi.org/10.1093/mnras/stz2890</a>
Date	2020
Citation	Eyres, Stewart Paul shore, Evans, A, Zijlstra, A, Avison, A, Gehrz, R D, Hajduk, M, Starrfield, S, Mohamed, S, Woodward, C E et al (2020) Erratum: ALMA reveals the aftermath of a white dwarf-brown dwarf merger in CK Vulpeculae. Monthly Notices of the Royal Astronomical Society, 493 (1). pp. 1328-1329. ISSN 1365-2966
Creators	Eyres, Stewart Paul shore, Evans, A, Zijlstra, A, Avison, A, Gehrz, R D, Hajduk, M, Starrfield, S, Mohamed, S, Woodward, C E and Wagner, R M

It is advisable to refer to the publisher's version if you intend to cite from the work.  
<https://doi.org/10.1093/mnras/stz2890>

For information about Research at UCLan please go to <http://www.uclan.ac.uk/research/>

All outputs in CLoK are protected by Intellectual Property Rights law, including Copyright law. Copyright, IPR and Moral Rights for the works on this site are retained by the individual authors and/or other copyright owners. Terms and conditions for use of this material are defined in the <http://clock.uclan.ac.uk/policies/>

# Erratum: ALMA reveals the aftermath of a white dwarf–brown dwarf merger in CK Vulpeculae

by S. P. S. Eyres<sup>1,2★</sup>, A. Evans,<sup>3</sup> A. Zijlstra,<sup>4</sup> A. Avison<sup>4</sup>, R. D. Gehrz,<sup>5</sup>  
M. Hajduk<sup>6</sup>, S. Starrfield,<sup>7</sup> S. Mohamed,<sup>8</sup> C. E. Woodward<sup>5</sup> and R. M. Wagner<sup>9,10</sup>

<sup>1</sup>Faculty of Computing, Engineering & Science, University of South Wales, Pontypridd CF37 1DL, UK

<sup>2</sup>Jeremiah Horrocks Institute, University of Central Lancashire, Preston PR1 2HE, UK

<sup>3</sup>Astrophysics Group, Keele University, Keele, Staffordshire ST5 5BG, UK

<sup>4</sup>Jodrell Bank Centre for Astrophysics, School of Physics and Astronomy, University of Manchester, Manchester, M13 9PL, UK

<sup>5</sup>Minnesota Institute for Astrophysics, School of Physics & Astronomy, 116 Church Street SE, University of Minnesota, Minneapolis, MN 55455, USA

<sup>6</sup>Space Radio-Diagnostics Research Centre, University of Warmia and Mazury, Prawocenskiego Str. 9, 10-720 Olsztyn, Poland

<sup>7</sup>School of Earth and Space Exploration, Arizona State University, Box 871404, Tempe, AZ 85287-1404, USA

<sup>8</sup>South African Astronomical Observatory, PO Box 9, Observatory 7935, Cape Town, Western Cape, South Africa

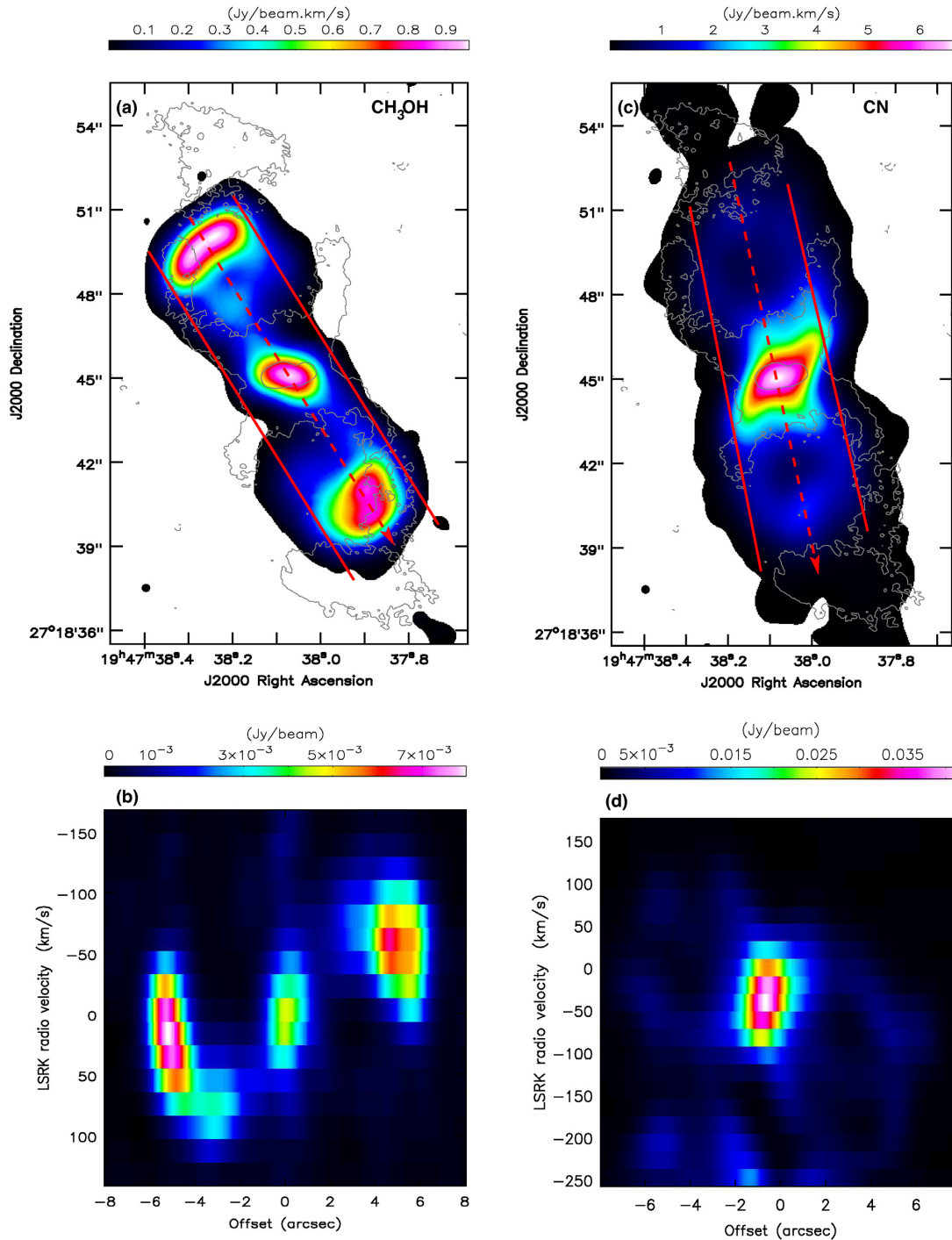
<sup>9</sup>Department of Astronomy, The Ohio State University, 140 West 18th Avenue, Columbus, OH 43210, USA

<sup>10</sup>LBT Observatory, University of Arizona, Tucson, AZ 85721-0065, USA

**Key words:** circumstellar matter – stars: individual, CK Vul – stars: peculiar – stars: jets – stars: winds, outflows – submillimetre: stars – errata, addenda.

This is an erratum for Eyres et al. (2018). In fig. 3(d) the direction of the offset axis was reversed. The corrected Fig. 1 included in this erratum corrects this. No other changes are necessary, and the direction of the position–velocity plot is not a factor in any of the conclusions of the paper.

\* E-mail: [stewart.eyres@southwales.ac.uk](mailto:stewart.eyres@southwales.ac.uk)



**Figure 1.** (a) Intensity map of CH<sub>3</sub>OH (colour scale, line 7 in table 1 in the original paper); contours of dust continuum at 0.12 and 0.48 mJy beam<sup>-1</sup> for reference; (b) position–velocity plot along the dashed–line with arrow in (a); (c) intensity map of CN (colour scale, line 5 in table 1 in the original paper), contours as (a); (d) position–velocity plot along the dashed–line with arrow in (b) from north to south. For the intensity maps in (a) and (c) the spatial resolution is represented by the small black circle to the bottom left in each image, where both the spectral line and continuum resolutions are over–plotted, but are indistinguishable at this scale.

## REFERENCE

Eyres S. P. S. et al., 2018, *MNRAS*, 481, 4931

This paper has been typeset from a  $\text{\TeX}/\text{\LaTeX}$  file prepared by the author.