

Central Lancashire Online Knowledge (CLoK)

Title	Multiscale friction in lubricant-surface systems for high performance transmissions under mild wear
Type	Article
URL	https://clock.uclan.ac.uk/id/eprint/32104/
DOI	https://doi.org/10.1007/s11249-018-1032-z
Date	2018
Citation	Humphrey, E, Morris, N, Leighton, M, Rahmani, R and Rahnejat, Homer (2018) Multiscale friction in lubricant-surface systems for high performance transmissions under mild wear. Tribology Letters, 66 (77). ISSN 1023-8883
Creators	Humphrey, E, Morris, N, Leighton, M, Rahmani, R and Rahnejat, Homer

It is advisable to refer to the publisher's version if you intend to cite from the work.
<https://doi.org/10.1007/s11249-018-1032-z>

For information about Research at UCLan please go to <http://www.uclan.ac.uk/research/>

All outputs in CLoK are protected by Intellectual Property Rights law, including Copyright law. Copyright, IPR and Moral Rights for the works on this site are retained by the individual authors and/or other copyright owners. Terms and conditions for use of this material are defined in the <http://clock.uclan.ac.uk/policies/>



Multiscale Friction in Lubricant-Surface Systems for High-Performance Transmissions Under Mild Wear

E. Humphrey¹ · N. Morris¹ · M. Leighton¹ · R. Rahmani¹ · H. Rahnejat¹

Received: 19 March 2018 / Accepted: 19 May 2018 / Published online: 24 May 2018
 © The Author(s) 2018

Abstract

The lubricant-surface system is complex in nature and can significantly affect the frictional performance of high-performance transmission systems. The complexity stems from the coupled mechanical and chemical phenomena that occur at the interfacial tooth conjunctions. A combined analytical and precision experimental approach is presented to analyse the salient parameters of the lubricant-surface system. A multiscale procedure comprising topographical measurement, pin-on-disc tribometry, atomic force microscopy in lateral force mode, X-ray photo-electron spectroscopy and continuum contact mechanics analysis under mixed non-Newtonian thermo-elastohydrodynamics is used to describe the formation of a tribo-film, as well as wear and frictional characteristics of the lubricant-surface system. The contribution of chemisorbed and physisorbed bonded tribo-film on the boundary coefficient of friction is ascertained at different physical scales. Therefore, the paper presents a novel multiscale analysis, promoting improved understanding of the complex interactions between mechanisms of friction, wear and surface chemistry.

Keywords Gear · Tribo · Film · Additive · ZDDP · AFM · Atomic force microscopy · Wear · Friction

List of Symbols

A	Apparent contact area
A_a	Asperity contact area
a	Contact footprint semi-half width
B	Damping coefficient
$c_{p(L)}, c_{p(s)}$	Specific heat capacities of the lubricant and surface material
D	Deborah number
E_1, E_2	Elastic moduli of contacting surfaces
E^*	Composite (effective) Young's modulus of elasticity of the contact
F	Applied load
f	Total friction
$F_2, F_{5/2}$	Statistical functions
f_b	Boundary friction
f_v	Viscous friction
G	Shear modulus of the lubricant
G_0	Atmospheric shear modulus of the lubricant
G^*	Dimensionless materials' parameter

G_e	Dimensionless elastic parameter
G_v	Dimensionless viscous parameter
h_o	Central contact lubricant film thickness
$K_{(L)}, K_{(s)}$	Thermal conductivities of the Lubricant and sample material
p	Pressure
p_0	Maximum contact pressure
\bar{p}	Average contact pressure
R	Effective contact radius (pin contact face radius)
S_0	A constant in lubricant viscosity–temperature relationship
U	Sliding velocity
U_e	Lubricant entrainment velocity
U^*	Dimensionless speed (rolling viscosity) parameter
W	Normal load
W_a	Load carried by asperities
W_v	Lubricant viscous reaction
W^*	Dimensionless load parameter
z	Pressure-viscosity coefficient

✉ N. Morris
 N.J.Morris@lboro.ac.uk

¹ Wolfson School of Mechanical, Electrical and Manufacturing Engineering, Loughborough University, Loughborough, UK

Greek Symbol

α_0	Piezo-viscosity index
β	Average asperity tip radius
β_0	Thermo-viscosity index

η	Lubricant dynamic viscosity
η_0	Atmospheric lubricant dynamic viscosity
μ_v	Coefficient of viscous friction
μ	Contact coefficient of friction
τ_0	Lubricant Eyring shear stress
τ_b	Shear stress of adsorbed/bonded tribo-film
ξ	Average asperity peak height density
ζ	Pressure coefficient of boundary shear strength
Θ	Bulk free surface temperature of disc sample
Θ_0	Reference temperature at ambient condition
Θ_e	Effective contact temperature
Θ_m	Contact temperature rise above that of the bulk
σ	Composite RMS roughness
λ	Stribeck's oil film ratio
ν_1, ν_2	Poisson's ratios of contacting surfaces
$\rho_{(s)}$	Density of disc sample

Abbreviation

AFM	Atomic force microscope
LFM	Lateral force mode
MTM	Mini-traction machine
SEM	Scanning electron microscope
XPS	X-ray photoelectron spectroscopy
ZDDP	Zinc dialkyldithiophosphates

1 Introduction

Improved energy efficiency of transmission systems is a key objective in high-performance vehicles. The losses attributed to friction include those due to meshing of gear pairs, their bearing supports, windage and drag within the air-oil mist environment of transmission casing, as well as pumping losses. These losses directly promote increased fuel use and harmful emissions, for which increasingly stringent directives are legislated. Therefore, the drive for increased efficiency involves all the vehicular powertrain components. For commercial road vehicles, the suggested efficiency improvements are between 3 and 5% through mitigation of friction and 4–5% for dual clutch and transmissions [1]. Research and development in technologies, purporting to improve system efficiency, commonly occur through the ‘track-to-road’ concept [2]. High-performance transmissions are routinely subjected to extreme contact pressures, temperatures and kinematics of contacting teeth pairs [3]. Owing to these prevailing extreme contact conditions, it is critical to fundamentally understand the effect of governing operating parameters, before suitable remedial actions can be proposed.

Major advances in transmission efficiency have already taken place through the evolving understanding of mixed elastohydrodynamic regime of lubrication at high loads,

often yielding thin films subjected to non-Newtonian shear [4–10]. A recent trend for improving high-performance transmissions is the development of dry sump concept, which reduces lubricant drag and windage losses, as well as reducing direct emissions from the transmission housing. Lowering of lubricant viscosity also helps in reducing pumping losses by scavenging small volumes of lubricant from the sump and recirculating via impinging directed oil jets. These actions can lead to lubrication problems. Therefore, high pressure, high shear characteristics of formulated lubricants [11] have been determined and used in elastohydrodynamic analysis. The conditions often prevalent in practice such as conjunctural inlet shear heating and starvation can then be considered in a realistic manner [12]. With reduced lubricant viscosity and ultra-thin films, subject to high pressure and shear, the role of surface-active lubricant additives has become crucial. Bench top tribometers, operating under mixed and boundary regimes of lubrication have been used to create conditions which are conducive to activation of additives and formation of desired tribo-films [13, 14]. Contact mechanics and frictional characterisation of tribo-films are, therefore, essential in development of predictive methods.

The advent of nanoscale mechanical testing using Atomic Force Microscopy (AFM) has provided an impetus in the fundamental understanding of tribo-film formation and mechanical behaviour [15–18]. Pidduck and Smith [18] showed that Lateral Force Mode (LFM) with AFM can be used to investigate tribo-films formed through tribometric activation. Carpick et al [19, 20] showed that measurements taken in a vacuum for nanoscale frictional properties, using LFM, are functions of contact area, adhesion, and surface shear strength. Umer et al [21] used a similar approach to benchmark automotive cylinder coatings using these nanoscale mechanical properties, including the shear strength and modulus of elasticity.

Nanoscale analysis has been used to determine the mechanical properties of thermal and thermo-mechanically generated tribo-films [22–24]. Bec et al [22] used a surface force apparatus to investigate the anti-wear properties of Zinc Dialkyldithiophosphates (ZDDP) films, such as the rate of film formation and its shear strength. Variations in nanoscale modulus of elasticity of ZDDP films were shown by Graham et al [23], using AFM. The mechanism and rate of tribo-film growth have been shown to be important for mechanical and thermally activated composition of ZDDP tribo-films. Kim et al [25] used a nano-indenter to investigate tribo-film hardness and elasticity of an ashless extreme-pressure additive generated through tribological tests. Topolovec-Miklozic et al [26, 27] used a mini-traction machine (MTM) to investigate ZDDP tribo-film formation on DLC. After the surface was lightly cleaned with propanol, surface height and lateral force images measured

using an AFM were used to gain an understanding of the tribometric results. Zhang and Spikes [28] investigated the mechanisms of anti-wear tribo-film formation using topographical imaging of the surface and showed the evolution of surface topography with the growth of the tribo-film.

The current paper uses LFM to investigate the mechanics of the tribo-film formed through application of representative pin-on-disc tribometry. Measurement of frictional characteristics in conjunction with surface wear and surface chemical analysis provides a detailed understanding of the complex multiscale interactions which influence the parasitic losses within high-performance transmission systems.

2 Experimental Methodology

2.1 Overview

A procedure, including a testing protocol, is established to enable precise and repeatable measurements within an integrated experimental–numerical analysis. This includes inspection of surfaces of test specimen prior and post tribometry to determine any topographical and chemical compositional changes, as well as frictional characteristics. Topographical measurements are carried out using an optical focus variation technique with the Alicona focus variation microscopy with a nominal vertical resolution of 10 nm and horizontal resolution (along the surface directions) of 0.44 μm . X-ray photoelectron spectrometry (XPS) is used for chemical analysis of tribo-films formed on the specimen surface. LFM is used to measure frictional characteristics of these evolving tribo-films, which are subject to growth as well as wear during tribometry. The results of measurements are then combined with an analytical continuum contact mechanics model to accrue further fundamental understanding of the results of experiments, particularly the frictional performance of formed tribo-films.

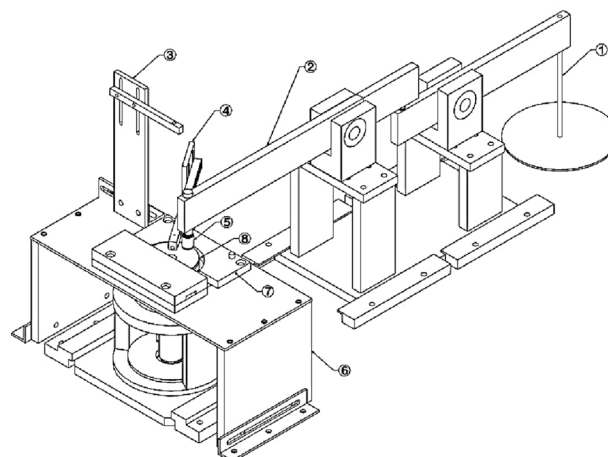
Table 1 Material properties

Component /material	Property	Value	Unit
Pin—AISI52100 (Grade 10)	E	212	GPa
	Poisson's ratio	0.28	—
	Hardness	700–900	HV
	RMS (Rq)	0.11	μm
	Skewness (Ssk)	−0.0632	—
	Kurtosis (Sku)	2.66	—
Disc—EN36C (Case carburised)	E	210	GPa
	Poisson's ratio	0.3	—
	Hardness	700	HV
	RMS (Rq)	0.24	μm
	Skewness (Ssk)	0.0402	—
	Kurtosis (Sku)	3.30	—

2.2 Tribometry

A precision pin-on-disc tribometer, Fig. 1, is used to replicate some aspects of meshing teeth pair cycles of a high-performance transmission. The normal contact force applied onto the sample disc surface (5) is generated by a cantilever loading mechanism (1). The rotation of the sample disc causes relative sliding between the two surfaces (pin and disc). Generated friction is measured by a strain gauge rosette mounted upon the cantilever arm. An enclosed heating system (6 & 7) is used to raise, maintain and determine the bulk temperature of the disc samples. A K-type thermocouple is used to create a feedback loop. Lubricant is fed into the contact using a fixed feed rate syringe driver and a roller wiper system is used to maintain a layer of lubricant of constant thickness on the surface of the disc, which acts as a consistent inlet meniscus height for all tests (4). The material and basic topographical data for the pin and disc samples are listed in Table 1. To manufacture the pin, AISI52100 grade bearing steel with high chromium content and readily

Fig. 1 A schematic diagram of the in-house unidirectional precision pin-on-disc tribometer



1. Cantilever loading mechanism
2. Measurement arm
3. Lubricant feed stand
4. Lubricant levelling roller wiper system
5. Pin holder
6. Heater system support structure
7. Heating enclosure
8. Sample disc

commercially available with similar properties to the gear steel in high performance racing transmissions is used. The disc is made from a typical gear steel (EN36C) which is very similar in mechanical properties to the pin. The discs are case carburised to a hardness of 700 HV.

Sample preparation is a key stage within the procedure as the presence of any contaminants on the surface would affect the integrity and repeatability of measurements. A non-polar solvent, petroleum ether, is used to thoroughly clean all the sample surfaces.

It is essential to characterise the contact of teeth pairs in a meshing cycle of the investigated high-performance transmission. This enables the determination of necessary pin-on-disc operational conditions (contact load, contact pressure and sliding velocities) to closely replicate that of the intended system as far as possible. It should be noted that pin-on-disc experiments promote pure sliding contact conditions, whereas the involute gear teeth of the investigated transmission are subject to slide-roll meshing condition. However, tribometry is primarily used to activate the lubricant's boundary active elements. Typical operating parameters for a simulated high-performance transmission system have been used [29]. The meshing cycle is compared with the range of operating conditions generated on the tribometer, using the Greenwood chart [30] and Deborah number [31].

The dimensionless parameters used in the Greenwood chart indicate the prevailing regime of lubrication. These are the dimensionless elastic, G_e , and viscous, G_v , parameters:

$$G_e = \frac{W^* \delta^{8/3}}{U^{*2}} \quad (1)$$

$$G_v = \frac{G^* W^{*3}}{U^{*2}} \quad (2)$$

where the dimensionless speed (rolling viscosity), load, and materials' parameters are as follows:

$$W^* = \frac{W}{E^* R^2}, \quad U^* = \frac{U_e \eta}{E^* R}, \quad G^* = E^* \alpha_0 \quad (3)$$

$$\frac{1}{E^*} = \frac{1}{\left(\frac{E_1}{1-\nu_1^2}\right)} + \frac{1}{\left(\frac{E_2}{1-\nu_2^2}\right)}, \quad (4)$$

where W is the applied normal contact load. In the case of meshing gear teeth, the value of W changes through the meshing cycle. This is obtained from an analysis of the same transmission, reported by Fatourehchi et al [3]. In the case of pin-on-disc tribometry, W is the applied contact load through the pin, and because of the hemispherical profile of the pin

contact face, the length L in definition of W^* is replaced by the pin contact face radius, R . U_e is the speed of lubricant entrainment into the contact; R is the equivalent radius of the meshing teeth pair along the semi-minor axis of their instantaneous contact during a meshing cycle (for the case of gears) and the pin radius in the case of tribometry; η is the dynamic viscosity of the lubricant used. E^* is the effective (reduced) Young's modulus of elasticity of the contacting pair, where $E_{1,2}$ and $\nu_{1,2}$ are their moduli of elasticity and Poisson's ratios, respectively.

The dimensionless elastic and viscous parameters are calculated to be in the range: $G_e = 10^5 - 10^{11}$ and $G_v = 10^7 - 10^{13}$ for the high-performance transmission meshing cycle and $G_e = 10^8 - 10^9$ and $G_v = 10^9 - 10^{10}$ for the pin-on-disc tribometry. The analysis shows that the contact condition of the transmission resides within Piezo-viscous Elastic (elastohydrodynamic) regime of lubrication. By using a 10-mm-radius hemispherical pin, a sufficiently small Hertzian contact footprint is formed, which allows for representative contact pressures (1–3 GPa) to be attained. Moreover, the high values of the dimensionless viscous parameter indicate high contact shear conditions and non-Newtonian lubricant behaviour.

The high values of G_v parameter at its upper bound range indicate non-Newtonian shear of the lubricant. However, as the contact footprint semi-minor half-width with the tribometer is typically smaller than that of the meshing teeth pairs, it is necessary to ascertain the lubricant response time in both cases. The Deborah number [31] is calculated for both the actual gear teeth pair contact as well as that of pin-on-disc to ensure that both contacts are within the same regime of lubricant traction and also help describe the extent of non-Newtonian shear behaviour. The Deborah number is described as the ratio of the lubricant relaxation time, (η/G) , to the time of its passage through the contact in the direction of entraining motion, $(U_e/2a)$ [31], thus

$$D = \frac{\eta U_e}{2aG} \quad (5)$$

where a is the Hertzian contact semi-half width in the direction of sliding, and G is the lubricant shear modulus. The lubricant rheological state (η, G) is adjusted for the prevailing contact pressure and temperature. For lubricant viscosity [32, 33],

$$\eta = \eta_0 e^{(\alpha^* p)} \quad (6)$$

$$\alpha^* = \frac{1}{p} [\ln(\eta_0) + 9.67] \left\{ \left(\frac{\Theta_e - 138}{\Theta_0 - 138} \right)^{-S_0} \left(1 + \frac{p}{1.98 \times 10^8} \right)^z - 1 \right\} \quad (7)$$

where α^* is a function of both pressure and temperature. S_0 and z are constants for the lubricant which are independent of the system pressure and viscosity. Θ_e is the effective contact

temperature and Θ_0 is a reference temperature at ambient atmospheric conditions.

$$z = \frac{\alpha_0}{5.1 \times 10^{-9} [\ln(\eta_0) + 9.67]}, \quad S_0 = \frac{\beta_0(\Theta_e - 138)}{\ln(\eta_0) + 9.67} \quad (8)$$

α_0 and β_0 are the pressure and temperature coefficients for the lubricant at ambient conditions, respectively.

For lubricant shear modulus [34],

$$G = (G_0 + \alpha_0 p) e^{\left\{ \beta_0 \left(\frac{1}{\Theta_e} - \frac{1}{\Theta_0} \right) \right\}}. \quad (9)$$

Using the adjusted lubricant rheological state, (η , G), the Deborah number is found to be $D \gg 1$ throughout the meshing cycle of the high-performance transmission, indicating non-Newtonian traction, which confirms the above analysis using the Greenwood chart [30]. For the pin-on-disc experiments the Deborah number falls in the range: 1–4.835. Therefore, it can be concluded that the lubricants response under the conditions created through tribometry is a good replication of those in situ within the transmission gearing contacts. As with the Greenwood chart analysis, the main limiting factor with tribometry is the lubricant entrainment velocity. Table 2 lists the evaluated tribometer test conditions.

3 Continuum Contact Mechanics

An analytical continuum contact mechanics model is used for micro-scale point contact of the pin and the disc. This model is used for a better understanding of the experimental results. The analytical model also links the scale-dependent measured parameters of the lubricant-surface system which include contact profile, surface topography and pressure coefficient of boundary shear strength. The effect of adhesion is negligible in the current analysis, as the surface energy is significantly reduced in the presence of a fully formulated lubricant. The results for load parameter $\bar{p} = \frac{P}{\pi w R} \approx 8 \times 10^3$ for the case studied here, which puts the conditions in the Hertzian region of the adhesion chart of Johnson and Greenwood [35]. Thus, the contact pressure and footprint dimensions are determined using the classical Hertzian theory [36, 37].

$$A = \pi \left(\frac{3WR}{4E^*} \right)^{2/3}, \quad (10)$$

Table 2 Tribometer conditions

Parameter	Value	Units
Sliding speed	0.8–5	m/s
Bulk surface Temperature	333	K
Contact pressure	1.16	GPa

where A is the apparent contact area. This is also measured from the wear spot made on the pin surface, using optical focus variation technique (Fig. 2). Therefore, the Hertzian contact pressure is obtained as follows:

$$p_0 = \frac{3}{2} \bar{p} = \left(\frac{6WE^{*2}}{\pi^3 R^2} \right)^{\frac{1}{3}}. \quad (11)$$

Hertzian theory is based upon contact of a pair of nominally smooth frictionless elastic ellipsoidal solids of revolution. However, real engineering surfaces are rough, and the interaction of their ubiquitous asperities in relative motion generates friction. To determine the boundary friction due to these interactions, it is necessary to calculate the asperity contact area and the load carried by the asperity tip contacts [38]:

$$A_a = \pi^2 (\xi \beta \sigma)^2 A F_2(\lambda) \quad (12)$$

$$W_a = \frac{16\sqrt{2}}{15} \pi (\xi \beta \sigma)^2 \sqrt{\frac{\sigma}{\beta}} E^* A F_{5/2}(\lambda), \quad (13)$$

where W_a is the share of applied contact load carried by the asperities and A_a is the total asperity contact area; β is the average asperity tip radius; σ is the composite RMS roughness of the contacting surface, and ξ is the average asperity peak density of the surface. These parameters are measured using the Alicona focus variation microscope. Equations (12) and (13) are based on the assumption of a Gaussian distribution of asperity peak heights. This is not true however for all engineering surfaces and non-Gaussian surfaces surface-specific distributions can be obtained through interferometry [39]. The topographical measurements in Table 1 show a kurtosis, $Sku \sim 3$ and a skewness of $Ssk \sim 0$, indicating Gaussian asperity height distribution and justifying the use of method expounded in [38]. In the current analysis, the surface-specific parameters such as the average asperity tip radius, RMS roughness and peak density are measured from the region of the wear scar in Fig. 2, when steady-state condition is reached after an initial period of running-in wear. The roughness parameter $(\xi \beta \sigma) = 6.99 \times 10^{-3}$ and the ratio that provides the

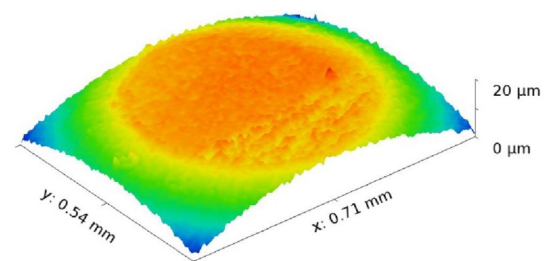


Fig. 2 Focus variation interferometric image of the wear spot on the hemispherical profiled pin

average asperity slope [37] $(\sigma/\beta) = 3.99 \times 10^{-2}$. The statistical functions $F_2(\lambda)$ and $F_{5/2}(\lambda)$ are functions of the Stribeck's oil film parameter: $\lambda = h_0/\sigma$. These are often approximated by a polynomial function of λ [40].

3.1 Lubricant Film Thickness

The lubricant film thickness can be obtained under the instantaneous contact conditions pertaining to the operations of tribometry using an extrapolated lubricant film equation, obtained through regression of a large number of numerical predictions. One such equation, used in the current analysis, is that of Chittenden et al [41]:

$$H_0^* = 4.31 (U_e^*)^{0.68} (W_e^*)^{-0.073} (G_e^*)^{0.49} \left\{ 1 - e^{[-1.23(R)^{0.67}]} \right\}, \quad (14)$$

where the non-dimensional parameters are as follows:

$$H_0^* = \frac{h_0}{R}, \quad U_e^* = \frac{\eta_0 U_e}{E^* R}, \quad W_e^* = \frac{W_v}{E^* R^2}, \quad G_e^* = E^* \alpha_0 \quad (15)$$

where R is the radius of curvature of the hemispherical pin; η_0 is the atmospheric lubricant dynamic viscosity; U_e is the lubricant entrainment velocity; α is the lubricant pressure viscosity index, and h_0 is the central film thickness. Equation (13) is applied to the portion of contact footprint, which is lubricated and subject to elastohydrodynamic regime of lubrication. Thus, W_v is the share of load carried by the lubricant film. This, in addition to the share of load carried by direct asperity pair contacts, W_a , should equate the applied contact load for instantaneous quasi-static equilibrium. As W_v is not known *a priori*, then all the non-dimensional groups in Eq. (15) are substituted into Eq. (14). The resulting equation is re-organised, yielding a relationship of the form:

$$W_v = K h_0^{-13.7}, \quad (16)$$

where K is a function of other system parameters in the dimensionless groups of Eq. (15), which are constant. The only other unknown in the resulting equation is the film thickness, h_0 . The following iterative procedure is used:

Step 1: An initial guess is made for the value of h_0 and W_v is obtained from Eq. (16).

Step 2: For a given value of the Stribeck's oil film parameter, λ , the share of contact load carried by the asperities is obtained from Eq. (13).

Step 3: The contact reaction is obtained as follows: $= W_v + W_a$. The contact reaction should equate the applied contact load (pin load), W , within a specified error tolerance.

Step 4: The convergence criterion is

$$\frac{F - W}{W} \leq \varepsilon, \quad (17)$$

where an error tolerance of $\varepsilon = 10^{-10}$ is used in the current analysis.

Step 5: If the convergence criterion is not met, then the film thickness is adjusted as follows:

$$h_0^n = (1 + B\vartheta) h_0^{n-1}, \quad (18)$$

where n is an iteration counter, and B is a damping factor with a typical value of 0.005 for this analysis, and $\vartheta = \frac{F-W}{\max\{W, F\}}$.

Then, steps 2 through 4 are repeated until the convergence criterion in Eq. (17) is satisfied.

3.2 Viscous Friction

The generated contact friction is partly due to the interaction of asperities on the counter face surfaces (i.e. pin and disc) and partly because of viscous shear of a thin lubricant film. The analysis described above has already shown that the shear of the thin lubricant film follows non-Newtonian behaviour (i.e. Deborah number, $D > 1$). Evans and Johnson [42] provided a relationship, based on combined measurement and analysis for viscous coefficient of friction of thin films subjected to non-Newtonian shear:

$$\mu_v = 0.87 \alpha_0 \tau_0 + 1.74 \frac{\tau_0}{\bar{p}} \ln \left[\frac{1.2}{\tau_0 h_0} \left(\frac{2K_L \eta_0}{1 + 9.6\xi} \right)^{0.5} \right], \quad (19)$$

where τ_0 is the lubricant characteristic Eyring shear stress, which is 4 MPa for the lubricant used in the current study; \bar{p} is the average (Pascal) contact pressure; $K_L = 0.148$ (W/mK) is the lubricant's thermal conductivity; $\alpha_0 = 1.69 \times 10^{-8}$ Pa.s⁻¹ is the lubricant pressure-viscosity index, and ξ is given as follows [42]:

$$\xi = \frac{4}{\pi} \frac{K}{h_0/R} \left(\frac{\bar{p}}{E^* R K_{(s)} \rho_{(s)} c_{p(s)} U_e} \right)^{1/2}, \quad (20)$$

where $K_{(s)}$, $\rho_{(s)}$, $c_{p(s)}$ are the thermal conductivity, density and specific heat capacity of the bulk solid surface material. For the samples used, $K_{(s)} = 52$ W/K, $\rho_{(s)} = 7850$ kg/m³ and $c_{p(s)} = 460$ J/(kg.K).

Therefore, viscous friction is obtained as follows:

$$f_v = \mu_v W_v. \quad (21)$$

3.3 Boundary Friction

Under the prevailing mixed regime of lubrication, some contribution due to boundary friction occurs as the result of counter face asperity interactions [43]:

$$f_b = \tau_b A_a, \quad (22)$$

where τ_b is the boundary shear stress of surface/tribo-film [43]:

$$\tau_b = \tau_0 + \zeta \bar{p}, \quad (23)$$

where ζ is the pressure coefficient of boundary shear strength and is measured using LFM (Sect. 4.2). τ_0 is the Eyring shear stress of the lubricant, which is 2.5 MPa in this case. \bar{p} is the mean pressure of contacting asperities:

$$\bar{p} = \frac{W_a}{A_a} \quad (24)$$

The high normal contact pressures $\bar{p} \approx 1 - 5 \text{ GPa}$ found at the interface between asperities determine the characteristic boundary shear stress of the surface/tribo-film which is significantly greater than the Eyring shear stress of the lubricant at the onset of non-Newtonian behaviour ($\tau_0 \sim 2.5 \text{ MPa}$). Thus, $\tau_b \approx \zeta \bar{p}$. The values for the pressure coefficient of boundary shear strength (ζ) are measured using AFM in lateral force mode (Sect. 4.2).

Therefore, the total generated friction becomes

$$f = f_v + f_b. \quad (25)$$

3.4 Temperature Rise Within the Contact

A proportion of input energy is dissipated through generated friction in the form of heat. This is used to readjust the contact temperature and therefore the viscosity and shear modulus of the lubricant in an iterative process. The contact flash temperature can be obtained as a mean temperature rise for the circular point contact of the hemispherical pin against the flat disc as [44, 45]

$$\Theta_m = \left(\frac{0.31fU}{ka} \right) \left(\sqrt{\frac{k}{\rho c_p Ua}} \right), \quad (26)$$

where f is the total friction from a previous iteration step (Eq. (25)). Equation (26) is shown to be accurate when the dimensionless speed parameter $\beta^* > 5$, where β^* is defined as [44, 45]

$$\beta^* = \frac{Ua\rho(s)c_{p(s)}}{2K(s)}. \quad (27)$$

The mean temperature obtained from Eq. (26) exceeds the bulk temperature of the disc surface Θ maintained within the heating enclosure (Fig. 1), and thus the effective contact temperature (used to adjust lubricant viscosity and shear modulus) becomes:

$$\Theta_e = \Theta_m + \Theta. \quad (28)$$

This method uses both analytical equations and measured surface-specific parameters to enable accurate

prediction of the complex lubricant-surface system frictional characteristics.

4 Results and Discussion

4.1 Micro-scale Topographic and Tribometric Measurements

Frictional performance of the EN36C disc sample with a commercial transmission lubricant (80W90 grade, with a kinematic viscosity of $140 \text{ mm}^2/\text{s}$ at 40°C) is ascertained using a precision in-house pin-on-disc tribometer (Fig. 1). Further description of the tribometer is provided in Sect. 2.2. The average coefficient of friction is taken from the nominal steady-state portion of the measured data in Fig. 3.

Figures 4 and 5 show surface topographical images using focus variation microscopy, as well as scanning electron microscopy (SEM) of a disc sample surface prior to and post tribometry. They show the evolution of surface topography. The images show that steady-state conditions are reached after an initial period of running-in wear has elapsed. This is shown within the indicated boxed region of the post-tribometric image, identifying the wear scar on the disc surface in Figs. 4 and 5.

4.2 Nanoscale Measurements

Post tribometry the samples are analysed for nanoscale boundary friction with LFM, following the detailed approach described by Leighton et al [17]. This is to determine the interfacial pressure coefficient of boundary shear strength between asperity contacts, ζ and the nanoscale boundary friction properties. These values are used as input data to the analytical continuum contact mechanics model described in Sect. 3. LFM enables measurement of these parameters on the disc samples before and after tribometry. Thus, the

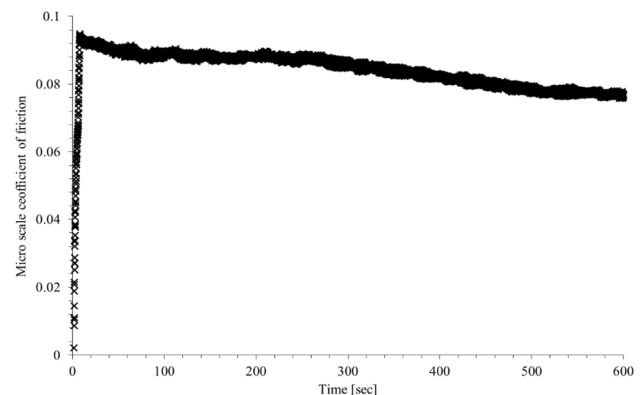


Fig. 3 An example of friction trace at sliding speed of 0.8 m/s

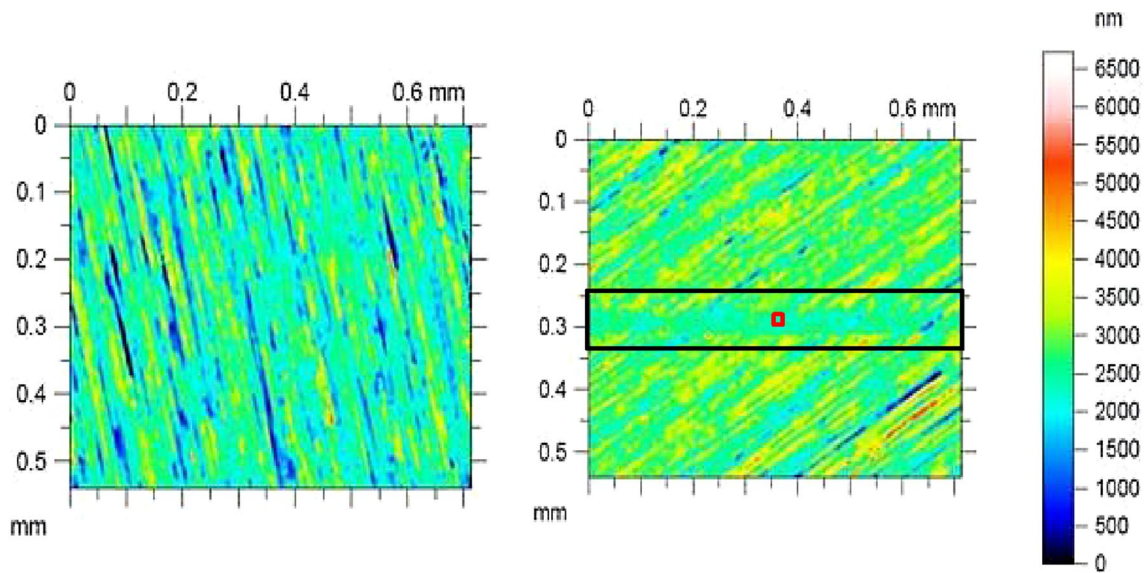


Fig. 4 Focus variation microscope images of a disc sample pre and post tribometry: (left) virgin surface, (right) worn sample with indicated wear scar

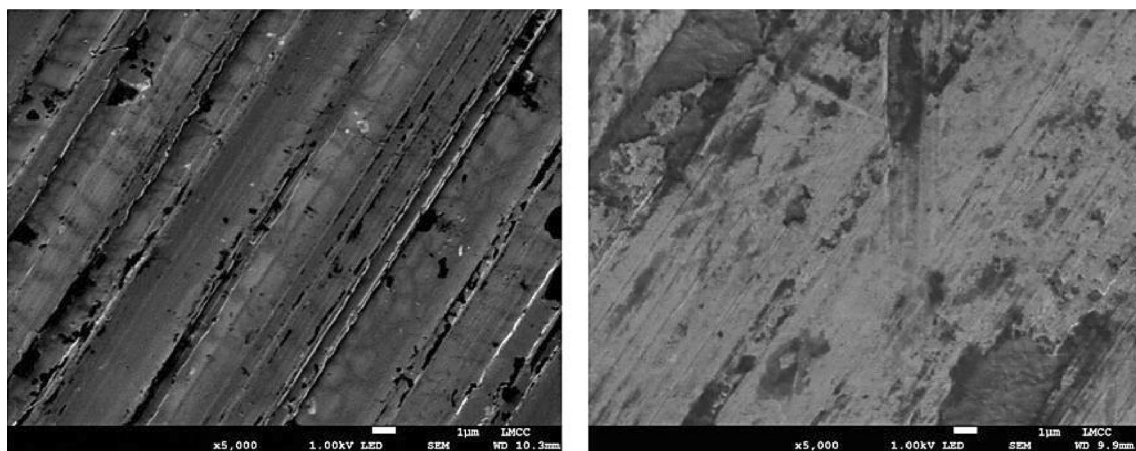


Fig. 5 SEM images of sample surfaces pre and post tribometry: (left) virgin sample, (right) post tribometry within the wear scar region of shown on Fig. 4

effect of any activated and retained tribo-film can be ascertained. A new approach is adopted to allow for analysis of any formed physisorbed or chemisorbed layers of an activated tribo-film. LFM is used to analyse the wear tracks on the disc sample surfaces post tribometry. The wear tracks are chosen as they represent areas of direct interactions of the contiguous contacting surfaces subject to shear, thermal and pressure activation of the lubricant additives at different contact sliding speeds. A $1 \mu\text{m}^2$ section of the wear scar, shown in Fig. 4 (red square—not to scale), is scanned using 1024 samples per line with 256 lines. A DNP-10 AFM probe with a triangular cantilever of spring stiffness 0.12 N m^{-1} and tip radius 20 nm is used. Calibration is performed for

each probe using a silicon-carbide calibration specimen with a known coefficient of friction of 0.19. For wet (lubricated) LFM, a tip holder is used to ensure that formed menisci are kept far away from the tip-sample conjunction, thus not affecting the measurements [17].

For each disc sample, its surface is first measured prior to tribometry in nominally dry condition (i.e. virgin surface-dry, relative humidity: $50 \pm 5\%$), as well as in the presence of a lubricant (i.e. virgin surface-wet). Post tribometry further LFM measurements are carried out in the region of wear tracks, corresponding to different sliding speeds, whilst the disc surface is still wetted (denoted by key identifiers: “value rpm – Wet”). These tests are intended to retain any

physisorbed and chemisorbed layers on the surface. The disc is then cleaned with a non-polar solvent (e.g. petroleum ether) to remove any weakly adsorbed physisorbed layer, and the surfaces are left to dry. A final set of LFM measurements are then conducted (denoted by identifiers: “value rpm – Dry”) to determine the nanoscale frictional behaviour of any strongly bonded chemisorbed tribo-film on the wear scar at each of the speed tracks on the surface of disc samples.

Figure 6 shows the LFM results under various stated conditions. The slope of the lines corresponds to the pressure coefficient of interfacial boundary shear strength of the surface, ζ . This is in effect the coefficient of friction at asperity interaction level (i.e. mesoscopic or nanoscale).

There are three distinct groups at the different stages of the measurement procedure. These are as follows:

Group 1: shows the results for dry and lubricated contacts of a virgin sample (pre-tribometry) with no thermally or mechanically activated tribo-film. The values of ζ are 0.22 (dry) and 0.20 (lubricated). The reduction of friction in the presence of a lubricant is because of reduced shear strength of a fluid film entrained into the contact. The small reduction in the value of ζ implies that there is little or no boundary active tribo-film present pre-tribometry.

Group 2: shows the analysis for a lubricated contact (wetted) post tribometry on a disc sample wear tracks. Therefore, the analysis corresponds to the combined effect of any physisorbed and chemisorbed layers of an activated tribo-film. It can be seen that there is a significant reduction in friction, with the value of the pressure coefficient of interfacial boundary shear strength, ζ measured in the range of 0.052–0.081, when compared with the lubricated virgin sample (without a formed tribo-film) with a value: $\zeta = 0.203$. This shows that a low friction physisorbed and chemisorbed layer must be formed and retained on the disc wear tracks post tribometry.

Group 3: shows the LFM results for cleaned and air-dried discs after tribometry. The results show increased friction after the removal of the lubricant residue. The dried sample has an increased interfacial shear strength compared with the dried virgin sample (pre-tribometry). This must be due to chemical bonding of surface-active lubricant additives to the surface of disc tracks, subjected to combined shear, pressure, and temperature activation. The measured values of ζ are in the range of 0.326–0.447. This finding is in line with those reported in literature for enhanced friction of ZDDP-dominated tribo-films, acting as an extreme pressure additive [13, 14, 26, 28].

Figure 7 shows the variation of measured coefficient of friction from tribometry with varying sliding velocity. The experimental data are compared with the analytical model presented in Sect. 3.2 and 3.3, also using the appropriate pressure coefficient of boundary shear strength, ζ measured by LFM (Table 3). At higher speeds, where there is

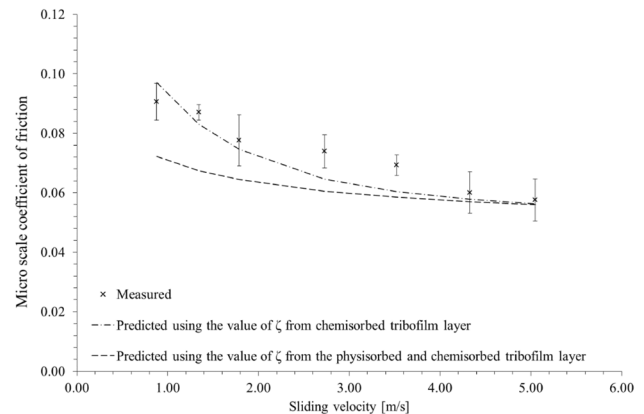


Fig. 7 Variation of measured coefficient of friction with sliding velocity and their predictions

Fig. 6 Nanoscale LFM measurements of interfacial boundary shear strength for EN36C disc samples under various conditions

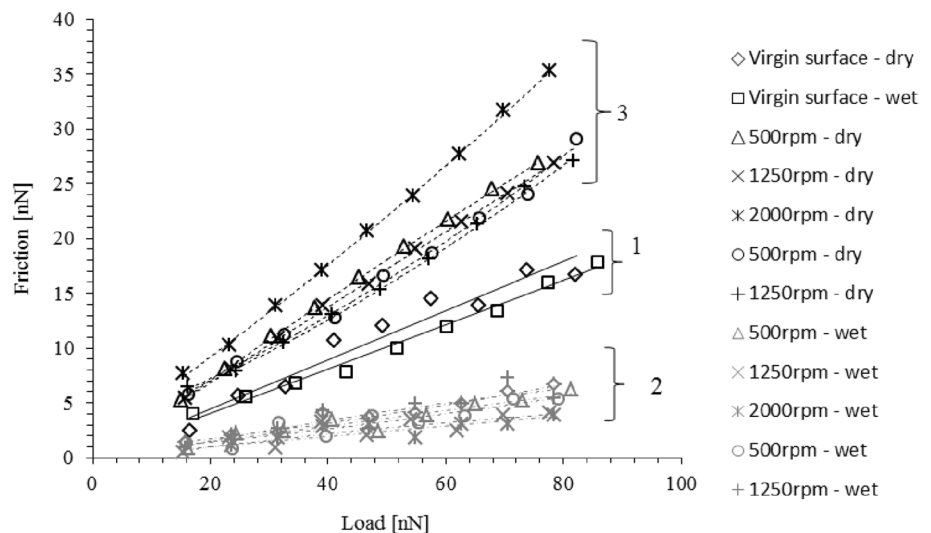


Table 3 Collection of interfacial boundary shear strength coefficients measured by LFM

Condition	Pressure coefficient of boundary shear strength average
0.9 m/s - Dry post tribometry	0.347
2.7 m/s - Dry post tribometry	0.334
5.0 m/s - Dry post tribometry	0.447
0.9 m/s - Lubricated post tribometry	0.070
2.7 m/s - Lubricated post tribometry	0.067
5.0 m/s - Lubricated post tribometry	0.065
Dry virgin surface	0.224
Lubricated virgin surface	0.203

diminutive boundary friction as the result of formation of a coherent elastohydrodynamic lubricant film, the predictions and measurement closely conform. The pressure coefficient of boundary shear strength for the surface with a retained physisorbed and chemisorbed film (group 2) significantly under-predicts the measured outcomes at slower sliding speeds. However, the pressure coefficient of boundary shear strength for the case where only a chemisorbed film is retained (group 3) conforms closely with the measurements.

The effect of adsorbed and bonded layers of any formed tribo-film, measured using LFM at nanoscale, can be compared with the micro-scale tribometric measurements. The two measured values for the pressure coefficient of boundary shear strength of a chemisorbed layer provide good correlation with tribometric data, implying that a formed tribo-film and its frictional properties under extreme contact conditions are a function of the regime of lubrication and wear behaviour in micro-scale tribology. This finding also implies that any weakly adsorbed or bonded physisorbed layer in the formed tribo-film is removed through wear, leaving only

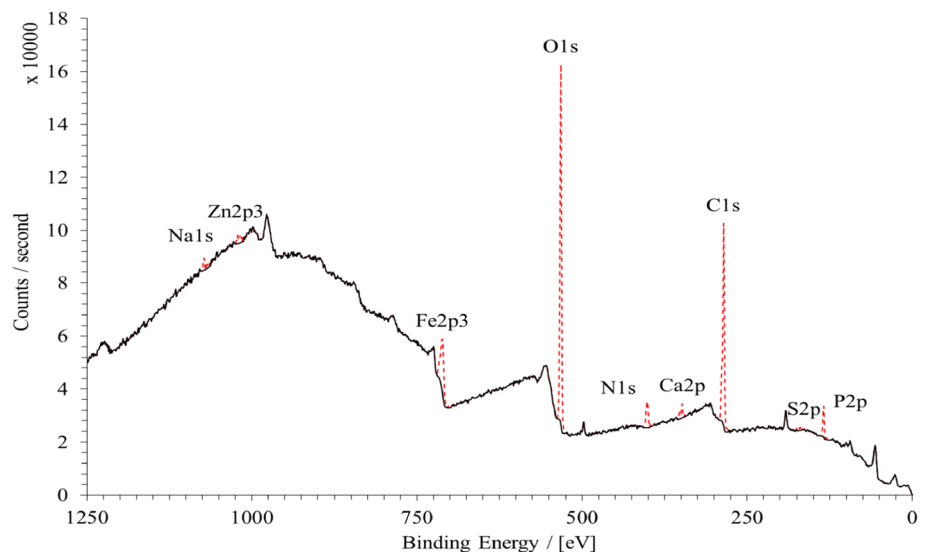
the chemically absorbed/bonded layer which dominates the boundary frictional characteristics.

4.3 Surface Chemical Analysis

Using the pin-on-disc tribometer as well as LFM, it is clear that the boundary active lubricant additives are thermo-mechanically activated through the testing procedure. Therefore, analysis of the composition of the bonded/absorbed layers on the surface of disc samples can be carried out using X-ray Photoelectron Spectroscopy (XPS). Disc samples are analysed for an area of $200\mu\text{m}^2$ on the wear scar tracks created by the tribometric tests. A survey scan with an extended dwell time is used to determine the chemical composition of the bonded tribo-film. An example of the XPS surface chemical analysis is shown in Fig. 8. The indicated peaks show detection of bonded elements onto the surface of the disc sample wear scar, in addition to the original background spectrum.

There is presence of Potassium, Sodium, Phosphorus, Sulphur and Zinc. All these elements offer performance enhancement as anti-wear, anti-oxidation agents and as friction modifiers [46]. Figure 9 shows a comparison of tribo-film elemental composition for slow, medium and fast sliding velocity test samples. It is clear that different shear rate affects the activation rate of different elements.

The results in Fig. 9 can be explained through two underlying mechanisms. Firstly, there is an increasing rate of energy generated in the contact with an increasing sliding velocity and available to activate elemental species adsorption/bonding onto the contacting surfaces. There can be an increase in contact oxidation, therefore greater activation of the anti-oxidant additives. Secondly, increased lubricant entrainment speed into the contact enhances the elastohydrodynamic lubricant film thickness, reducing the rate of

Fig. 8 An example spectrum of XPS surface chemical analysis

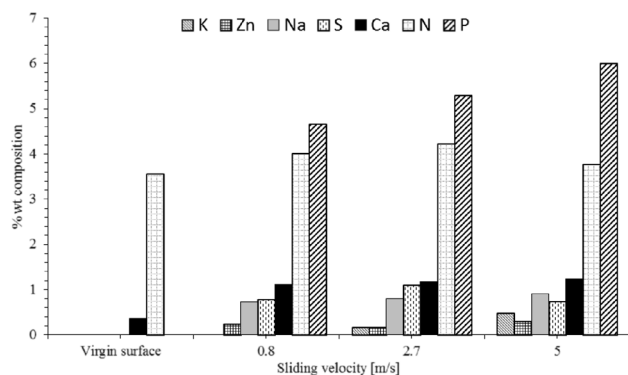


Fig. 9 Percentage weight composition of the adsorbed tribo-film post tribometry, note that the rest of the composition is made of carbon and oxygen deposits

wear. This is clearly shown in Fig. 10. Tribo-film growth is a complex interaction of film growth and removal through wear [23, 46].

Figure 10 shows the evolution of surface height across the sample disc track wear scars. This is a measure of tribo-film formation through the dual process of growth and wear. It shows that the contact conditions under high sliding velocity allow the deposition of a tribo-film on the surface. In comparison the slower sliding velocities do not show any significant tribo-film growth, but gradual wear of the surface. Therefore, it is clear that with reducing sliding velocity (reduced shear rate), the ensuing boundary regime of lubrication promotes an increased ratio of wear-to-growth of a tribo-film, leading to a gradual removal of the surface. This transition into the boundary regime of lubrication is predicted by the microscale analytical model (Fig. 7). The changing ratio wear-to-growth of a tribo-film means that the physisorbed layer of any formed tribo-film is continually subject to wear. Therefore, the chemisorbed interfacial shear

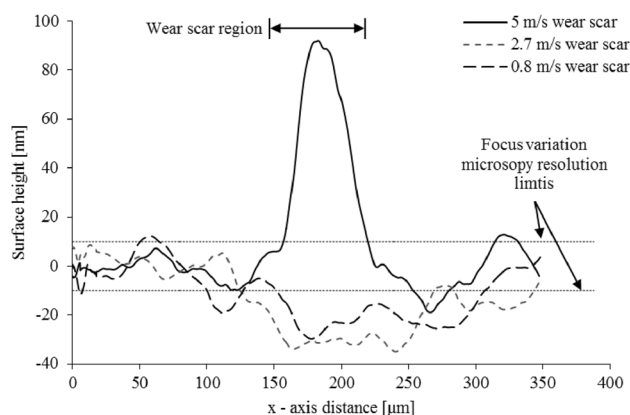


Fig. 10 Evolution of surface topography (tribo-film height) post tribometry for varying sliding velocities across the wear track scars

stress determined through use of LFM is more representative for the prevailing contact conditions. Under the slow sliding velocities, the ZDDP acts as an extreme pressure additive as designed; however, the tribo-film is continually removed by the interacting counter face asperities. At high sliding velocities, a full elastohydrodynamic lubricant film is formed with sufficient shear energy to activate the growth of a tribo-film [47]. It should be noted that the surface roughness along the direction of sliding was observed to consistently reduce when compared to the virgin surface, further indicating gradual wear of the surface when no tribo-film is formed and retained.

The evolution of surface topography is ascertained through a optical focus-variation technique. A x100 magnification optic is used with a measurement area of $10 \times 140 \mu\text{m}^2$. An averaged value is obtained over 10,000 surface profiles perpendicular to the direction of sliding (Fig. 11).

The presence of zinc in XPS results with the evidence of increased boundary shear strength from LFM and growth of wear track height using focus variation microscopy provide strong indication of the presence of the extreme pressure additive ZDDP tribo-film. Furthermore, the discolouration observed in Fig. 11 is documented within literature to be a formed oxide/ sulphide tribo-film and an indication of ZDDP surface additive activation from the lubricant onto the disc surface [48].

5 Concluding Remarks

The paper presents a procedure for analysing lubricant-surface combinations for multiscale boundary friction characteristics. It demonstrates the formation of a tribo-film through activation of additives from a transmission system lubricant onto disc samples in pin-on-disc tribometry, subjected to representative material, topographical and operating conditions of high-performance racing transmissions. The boundary frictional properties of the lubricant-surface system are obtained through use of lateral force microscopy,

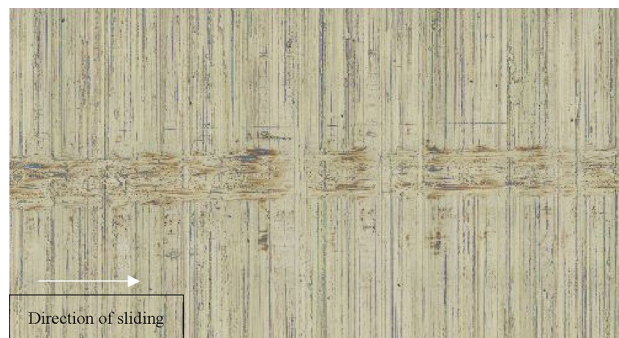


Fig. 11 An example of the wear scar for 5 m/s track

determining the pressure coefficient of interfacial boundary shear strength. The combination of the physisorbed and chemisorbed formed tribo-film layers are critical in the reduction of friction within a lubricant-surface system. Significant differences are observed between the boundary frictional characteristics of chemisorbed and physisorbed layers.

In-depth explanation for experimental measurements is provided through a developed microscale analytical model, linked to the nanoscale interactions through the input of the measured boundary interfacial shear strength of rough surfaces. The results show that the formed tribo-film frictional characteristics are a function of microscale regime of lubrication and wear. This finding is due to the severity of the replicated contact conditions and may be considered to be contact-specific.

Acknowledgements The authors are grateful to the Engineering and Physical Science Research Council (EPSRC) for the financial support extended to this research through the Doctoral Training Program (DTP). The authors also acknowledge use of facilities within the Loughborough Materials Characterisation Centre (LMCC).

Open Access This article is distributed under the terms of the Creative Commons Attribution 4.0 International License (<http://creativecommons.org/licenses/by/4.0/>), which permits unrestricted use, distribution, and reproduction in any medium, provided you give appropriate credit to the original author(s) and the source, provide a link to the Creative Commons license, and indicate if changes were made.

References

- King, J.: The king review of low-carbon cars Part 1: the potential for CO₂ reduction. Office of Public Sector Information, HM Treasury, HMSO, London (2007)
- Mourier, L., Crofts, P., Motta, M., Forastiero, G., Salino, P.: Engine Tribology: From F1 Performance on Track to Energy Efficiency on Road, World Tribology Congress, 2013, pp. 1–4
- Fatourehchi, E., Elisaus, V., Mohammadpour, M., Theodossiadis, S., Rahnejat, H.: Efficiency and durability predictions of high performance racing transmissions, SAE Int. J. Passeng. Cars, 9(3), pp. 2016-01-1852, 2016
- Grubin, A.N.: “Contact stresses in toothed gears and worm gears”, Cent. Sci. Res. Inst. Technol. Mech. Eng., 30(337) (1949)
- Dowson, D.: “History of Tribology”, Second. Professional Engineering Publishing Ltd, London (1998)
- Evans, C.R., Johnson, K.L., Regimes of traction in elastohydrodynamic lubrication, In: Proceedings of IMechE, Part C: Journal of Mechanical Engineering Science, 200(5), 313–324 (1986)
- Peiran, Y., Shizhu, W.: A generalized Reynolds equation for non-Newtonian thermal elastohydrodynamic lubrication. J. Tribol **112**, 631–636 (1990)
- Li, S., Kahraman, A.: A transient mixed elastohydrodynamic lubrication model for spur gear pairs. J. Tribol **132**(1), 011501 (2010)
- Mohammadpour, M., Theodossiadis, S., Rahnejat, H., Saunders, I.: Non-Newtonian mixed elastohydrodynamics of differential hypoid gears at high loads. Meccanica **49**(5), 1115–1138 (2014)
- Mohammadpour, M., Theodossiadis, S., Rahnejat, H., Dowson, D., Non-Newtonian mixed thermo-elastohydrodynamics of hypoid gear pairs, Proceedings of IMechE, Part J: Journal of Engineering Tribology, 2017, Mar 29:1350650117700756
- Habchi, W., Bair, S., Qureshi, F., Covitch, M.: A film thickness correction formula for double-newtonian shear-thinning in rolling EHL circular contacts. Tribol. Lett. **50**, 59–66 (2012)
- Paouris, L., Rahmani, R., Theodossiadis, S., Rahnejat, H., Hunt, G., Barton, W.: An analytical approach for prediction of elastohydrodynamic friction with inlet shear heating and starvation. Tribol. Lett. **64**(1), 10 (2016)
- Morina, A., Neville, A., Priest, M., Green, J.H.: ZDDP and MoDTC interactions in boundary lubrication-The effect of temperature and ZDDP/MoDTC ratio. Tribol. Int. **39**(12), 1545–1557 (2006)
- Morina, A., Neville, A.: Tribo-films: aspects of formation, stability and removal. J. Phys. D Appl. Phys. **40**(18), 5476–5487 (2007)
- Landman, U., Luedtke, W.D., Nitzan, A.: Dynamics of Tip-Substrate interactions in atomic force microscopy. Surf. Sci. Letters **10**, 177–184 (1989)
- Ruan, J., Bhushan, B.: Atomic-Scale friction measurements using friction force microscopy: Part 1—general principles and new measurement techniques. J. Lubr. Technol. **116**, 378–388 (1994)
- Leighton, M., Nicholls, T., De la Cruz, M., Rahmani, R., Rahnejat, H., “Combined lubricant-surface system perspective: Multi-scale numerical-experimental investigation”, Proceedings of Institute Mechanical Engineering Part J: Journal of Engineering Tribology, 2017, 231(7), pp. 910–924
- Pidduck, A.J., Smith, G.C.: Scanning probe microscopy of automotive anti-wear films. Wear **212**(2), 254–264 (1997)
- Carpick, R.W., Ogletree, D.F., Salmeron, M.: Variation of the Interfacial Shear Strength and Adhesion of a Nanometer-Sized Contact. Lungmuir **7463**(15), 3334–3340 (1996)
- Carpick, R.W., Agrait, N., Ogletree, D.F., Salmeron, M.: Measurement of interfacial shear (friction) with an ultrahigh vacuum atomic force microscope. J. Vac. Sci. Technol. B Microelectron. Nanom. Struct. **14**(2), 1289–1295 (1996)
- Umer, J., Morris, N., Leighton, M., Rahmani, R., Howell-Smith, S., Wild, R., Rahnejat, H.: “Asperity level tribological investigation of automotive bore material and coatings”. Tribol. Int. **117**, 131–140 (2018)
- Bec, S., Tonck, a, Georges, J.M., Coy, R.C., Bell, J.C., Roper, G.W., “Relationship between mechanical properties and structures of zinc dithiophosphate anti-wear films”, Proc. R. Soc. A Math. Phys. Eng. Sci., 1999, 455(1992), pp. 4181–4203
- Graham, J.F., Mccague, C., Norton, P.R.: Topography and nanomechanical properties of tribochemical films derived from zinc dialkyl and diaryl dithiophosphates. Tribol. Letters **6**(3–4), 149–157 (1999)
- Gosvami, N.N., Bares, J.A., Mangolini, F., Konicek, A.R., Yablon, D.G., Carpick, R.W.: Mechanisms of antiwear tribo-film growth revealed in situ by single-asperity sliding contacts. Science **348**(6230), 102–106 (2015)
- Kim, B., Mourhatch, R., Aswath, P.B.: Properties of tribo-films formed with ashless dithiophosphate and zinc dialkyl dithiophosphate under extreme pressure conditions. Wear **268**(2–3), 579–591 (2010)
- Topolovec-Miklozic, K., Forbus, T.R., Spikes, H.A.: Film thickness and roughness of ZDDP antiwear films. Tribol. Letters **26**(2), 161–171 (2007)
- Topolovec-Miklozic, K., Lockwood, F., Spikes, H.: “Behaviour of boundary lubricating additives on DLC coatings”. Wear **265**(11–12), 1893–1901 (2010)
- Zhang, J., Spikes, H.: “On the mechanism of ZDDP antiwear film formation”. Tribol. Lett. **63**(2), 24 (2016)

29. Elisaus, V., Mohammadpour, M., Theodossiades, S., Rahnejat, H., "Effect of teeth micro-geometrical form modification on contact kinematics and efficiency of high performance transmissions", *Proc. IMechE, Part, K.: J. Multi-body Dyn.*, 2017, 231(3), pp. 538–555
30. Greenwood, J.A., "Film thicknesses in circular elastohydrodynamic contacts", *Proc. IMechE, Part, C.: J. Mech. Eng. Sci.*, 1988, 202(1), pp. 11–17
31. Reiner, M.: The Deborah Number. *Phys. Today* **17**(1), 62 (1964)
32. Roelands, C., "Correlational Aspects of the Viscosity-Temperature Pressure Relationship of Lubricating Oils", PhD thesis, Delft University of Technology, Netherlands, 1966
33. Houpert, L.: New results of traction force calculations in elastohydrodynamic contacts. *J. Tribology* **107**(2), 241–248 (1985)
34. Dalmaz, G., Lubrecht, A., Dowson, D., Priest, M., "Transient Processes in Tribology", 30th Leeds-Lyon Symposium, Elsevier B.V., Amsterdam, Netherlands, 2004
35. Johnson, K.L., Greenwood, J.A.: "An adhesion map for the contact of elastic spheres. *J. colloid and interface science* **192**(2), 326–333 (1997)
36. Johnson, K.L.: "Contact Mechanics". Cambridge University Press, Cambridge (1985)
37. Gohar, R., Rahnejat, H.: "Fundamentals of Tribology". Imperial College Press, London (2008)
38. Greenwood, J.A., Tripp, J.H., "The Contact of Two Nominally Flat Rough Surfaces", *Proc. IMechE*, 1970, 185, pp. 625–633
39. Leighton, M., Morris, N., Gore, M., Rahmani, R., Rahnejat, H., King, P.D., "Boundary interactions of rough non-Gaussian surfaces", *Proc. IMechE, Part J: J. Engineering Tribology*, 2016, 230(11), pp. 1359–1370
40. Teodorescu, [M., Balakrishnan, S., Rahnejat, H.: "Integrated tribological analysis within a multi-physics approach to system dynamics", *Tribology and Interface Engineering Series*, 2005, 48, pp. 725–737, Elsevier
41. Chittenden, R.J., Dowson, D., Dunn, J.F., Taylor, C.M., "A Theoretical Analysis of the Isothermal Elastohydrodynamic Lubrication of Concentrated Contacts. II. General Case, with Lubricant Entrainment along Either Principal Axis of the Hertzian Contact Ellipse or at Some Intermediate Angle", *Proc. R. Soc. A Math. Phys. Eng. Sci.*, 1985, 397, pp. 271–294
42. Evans, C.R., Johnson, K.L., "Regimes of Traction in Elastohydrodynamic Lubrication", *Proc. IMech E, J. mech. Eng. Sci.*, 1985, 200, pp. 313–322
43. Briscoe, B.J., Evans, D.C.B.: The shear properties of Langmuir—Blodgett layers, In: *Proceedings of R Social A Mathamatics Physics English Science*, 1982, 380, pp. 389–407
44. Archard, J.F.: Contact and rubbing of flat surfaces. *J. Appl. Phys.* **24**(8), 981–988 (1953)
45. Archard, J.F.: The temperature of rubbing surfaces. *Wear* **2**(6), 438–455 (1959)
46. Rudnick, L.R.: "Lubricant Additives", 2nd. CRC Press, New York (2009)
47. Shimizu, Y., Spikes, H.A.: The influence of slide-roll ratio on ZDDP tribo-film formation. *Tribol. Lett.* **64**(2), 19 (2016)
48. Georges, J.M., Martin, J.M., Brison, J.F.: Contact surtemperature in a boundary lubricated interface. Relation to anti-wear additives action, In: *Proceedings of 6th Leeds-Lyon Symposium Tribology on Thermal Effects*, pp. 307–315 (1980)