

Central Lancashire Online Knowledge (CLoK)

Title	Influence of Including Patients with Premorbid Disability in Acute Stroke Trials: The HeadPoST Experience
Type	Article
URL	https://clock.uclan.ac.uk/36499/
DOI	https://doi.org/10.1159/000512608
Date	2021
Citation	Wang, Xia, Moullaali, Tom J, Ouyang, Menglu, Billot, Laurent, Sandset, Else Charlotte, Song, Lili, Delcourt, Candice, Hackett, Maree, Watkins, Caroline Leigh et al (2021) Influence of Including Patients with Premorbid Disability in Acute Stroke Trials: The HeadPoST Experience. Cerebrovascular diseases. ISSN 1015-9770
Creators	Wang, Xia, Moullaali, Tom J, Ouyang, Menglu, Billot, Laurent, Sandset, Else Charlotte, Song, Lili, Delcourt, Candice, Hackett, Maree, Watkins, Caroline Leigh, Robinson, Thompson G, Yang, Jie, Lavados, Pablo M, Brunser, Alejandro, Olavarría, Verónica V, Muñoz-Venturelli, Paula, Arima, Hisatomi, Middleton, Sandy, Pontes-Neto, Octávio M, Pandian, Jeyaraj Durai, Rogers, Kris and Anderson, Craig S

It is advisable to refer to the publisher's version if you intend to cite from the work.
<https://doi.org/10.1159/000512608>

For information about Research at UCLan please go to <http://www.uclan.ac.uk/research/>

All outputs in CLoK are protected by Intellectual Property Rights law, including Copyright law. Copyright, IPR and Moral Rights for the works on this site are retained by the individual authors and/or other copyright owners. Terms and conditions for use of this material are defined in the <http://clock.uclan.ac.uk/policies/>

Supplemental Appendix

Influence of including patients with pre-morbid disability in acute stroke trials: the

HeadPoST experience

Xia Wang,¹ Tom J Moullaali,² Menglu Ouyang,¹ Laurent Billot,¹ Else Charlotte Sandset,^{3,4} Lili Song,⁵ Candice Delcourt,^{1,6,7} Maree L. Hackett,^{1,8} Caroline L Watkins,⁸ Thompson G. Robinson,⁹ Jie Yang,¹⁰ Pablo M. Lavados,¹¹ Alejandro Brunser,¹¹ Veronica V. Olavarria,¹¹ Paula Munoz Venturelli,^{11,12} Hisatomi Arima,¹³ Sandy Middleton,¹⁴ Octávio M. Pontes-Neto,¹⁵ Jeyaraj Durai Pandian,¹⁶ Kris Rogers,¹ Craig S. Anderson;^{1,5,7,12} on behalf of the HeadPoST Investigators

¹The George Institute for Global Health, Faculty of Medicine, University of New South Wales, NSW, Australia

²Centre for Clinical Brain Sciences, University of Edinburgh, Edinburgh, UK

³Department of Neurology, Oslo University Hospital, Oslo, Norway

⁴The Norwegian Air Ambulance Foundation, Oslo, Norway

⁵The George Institute China at Peking University Health Science Center, Beijing, PR China

⁶The University of Sydney, Sydney, Australia

⁷Neurology Department, Royal Prince Alfred Hospital, Sydney, NSW, Australia

⁸College of Health and Wellbeing, University of Central Lancashire, Preston, Lancashire

⁹University of Leicester, Department of Cardiovascular Sciences and NIHR Leicester Biomedical Research Centre, Leicester, UK

¹⁰Department of Neurology, the First Affiliated Hospital of Chengdu Medical College, Chengdu, China

¹¹Unidad de Neurología Vascular, Servicio de Neurología, Departamento de Neurología y Psiquiatría, Clínica Alemana de Santiago, Facultad de Medicina, Universidad del Desarrollo, Santiago, Chile

¹²Departamento de Ciencias Neurológicas, Facultad de Medicina, Universidad de Chile, Santiago, Chile

¹³Department of Public Health, Fukuoka University, Japan

¹⁴Nursing Research Institute, Australian Catholic University and St Vincent's Health Australia

¹⁵Ribeirão Preto Medical School, University of São Paulo, Ribeirão Preto, Brazil

¹⁶Department of Neurology, Christian Medical College, Ludhiana, Punjab, India 141008

Table SI: Baseline characteristics according to categories of additional disability, defined by change in mRS scores from premorbid estimates to Day 7 (Δ mRS)

	Excluded		P value
	No	Yes	
<i>Demographic</i>			
Female	3222/8285 (38.9)	1207/2808 (43.0)	0.0001
Age, yr	67.7 (13.5)	68.7 (14.6)	<0.0001
<i>Region of recruitment</i>			
Australia/UK	3128/8285 (37.8)	1633/2808 (58.2)	<0.0001
South America	657/8285 (7.9)	253/2808 (9.0)	0.072
China (incl. Taiwan)	4019/8285 (48.5)	633/2808 (22.5)	<0.0001
India and Sri Lanka	481/8285 (5.8)	289/2808 (10.3)	<0.0001
<i>Clinical</i>			
Time from symptom onset to intervention,	15.0 (5.0 - 42.0)	11.0 (5.0 - 25.0)	<0.0001
Time from hospital admission to	9.0 (2.0 - 31.0)	5.0 (2.0 - 16.0)	<0.0001
Clinical diagnosis*			
AIS	1772/8285 (21.4%)	433/2808 (15.4)	<0.0001
ICH	240/8285 (2.9%)	47/2808 (1.7)	0.0004
NIHSS	4 (2-7)	8 (4-14)	<0.0001
GCS score	15 (14-15)	15 (13-15)	<0.0001
Systolic BP, mmHg	154.8 (27.1)	155.9 (29.3)	0.255
Diastolic BP, mmHg	86.5 (16.4)	86.8 (17.5)	0.955
Heart rate, bpm	76 (68-84)	77 (68-88)	<0.0001
Premorbid mRS 2-5	1984/8285 (24.0)	352/2786 (12.6)	<0.0001
<i>Medical history</i>			
Stroke	2087/8265 (25.3)	520/2793 (18.6)	<0.0001
Coronary artery disease	1154/8246 (14.0)	386/2777 (13.9)	0.901
Atrial fibrillation	774/8215 (9.4)	403/2759 (14.6)	<0.0001
Heart failure	280/8224 (3.4)	133/2773 (4.8)	0.001
Hypertension	5436/8274 (65.7)	1715/2787 (61.5)	<0.0001
Diabetes mellitus	2033/8266 (24.6)	619/2792 (22.2)	0.0095
Current smoker	1625/8211 (19.8)	500/2764 (18.1)	0.0503
Aspirin	3852/8281 (46.5)	948/2800 (33.9)	<0.0001
Other antiplatelet agent	1791/8279 (21.6)	421/2799 (15.0)	<0.0001
Anticoagulation	683/8277 (8.3)	268/2798 (9.6)	0.030

Data are n/N (%), mean (standard deviation) or median (1st quartile – 3rd quartile); P values were from chi-square and Kruskal-Wallis for categorical and continuous variables, respectively

AIS denotes acute ischemic stroke, BP blood pressure, GCS Glasgow coma scale, ICH intracerebral hemorrhage, mRS modified Rankin scale, NIHSS National Institutes of Health Stroke Scale.

*Clinician-reported from brain imaging and other investigations on hospital discharge.

Table III: Baseline characteristics by pre-stroke function on the mRS

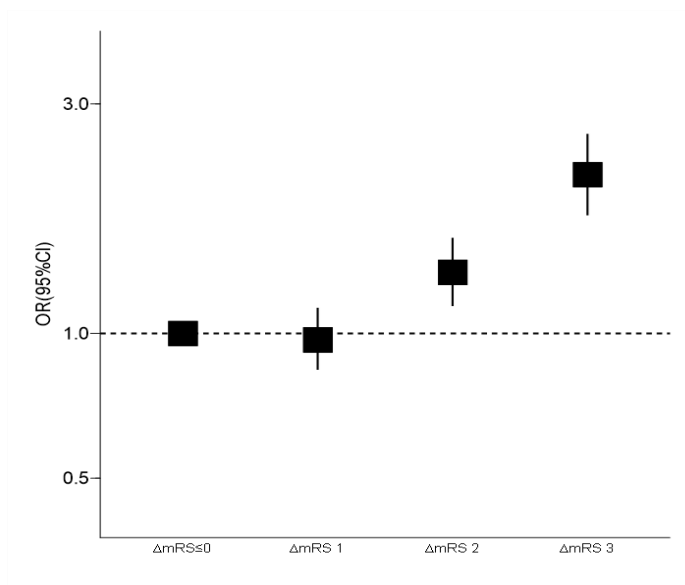
	mRS score		P value
	0-1	≥2	
<i>Demographic</i>			
Female	2280/6301 (36.2)	942/1984 (47.5)	<0.0001
Age, yr	66.2 (13.1)	72.5 (13.4)	<0.0001
<i>Region of recruitment</i>			
Australia/UK	2293/6301 (36.4)	835/1984 (42.1)	<0.0001
South America	478/6301 (7.6)	179/1984 (9.0)	
China (incl. Taiwan)	3141/6301 (49.8)	878/1984 (44.3)	
India and Sri Lanka	389/6301 (6.2)	92/1984 (4.6)	
<i>Clinical</i>			
Symptom onset to intervention, hrs	16.0 (5.0 - 43.0)	14.0 (5.0 - 37.0)	0.013
Hospital admission to intervention, hrs	9.0 (2.0 - 31.0)	8.0 (2.0 - 30.5)	0.767
Final diagnosis*			0.043
AIS	5471/6299 (86.9)	1691/1983 (85.3)	
ICH	440/6299 (7.0)	172/1983 (8.7)	
NIHSS score	3.0 (2.0 - 6.0)	6.0 (3.0 - 11.0)	<0.0001
GCS score	15.0 (15.0 - 15.0)	15.0 (13.0 - 15.0)	<0.0001
Systolic BP (mmHg)	154.9 (27.0)	154.3 (27.6)	0.246
Diastolic BP (mmHg)	86.9 (16.1)	85.2 (17.4)	<0.0001
Heart Rate (bpm)	76.0 (67.0 - 84.0)	76.0 (69.0 - 85.0)	0.0002
<i>Medical history</i>			
Previous stroke	1227/6286 (19.5)	860/1979 (43.5)	<0.0001
Coronary artery disease	784/6283 (12.5)	370/1963 (18.8)	<0.0001
Atrial fibrillation	491/6256 (7.8)	283/1959 (14.4)	<0.0001
Heart failure	148/6267 (2.4)	132/1957 (6.7)	<0.0001
Hypertension	4019/6293 (63.9)	1417/1981 (71.5)	<0.0001
Diabetes mellitus	1446/6287 (23.0)	587/1979 (29.7)	<0.0001
Current smoker	1350/6250 (21.6)	275/1961 (14.0)	<0.0001
<i>Medications</i>			
Aspirin	2849/6299 (45.2)	1003/1982 (50.6)	<0.0001
Other antiplatelet agent	1260/6299 (20.0)	531/1980 (26.8)	<0.0001
Anticoagulant	443/6295 (7.0)	240/1982 (12.1)	<0.0001

Data are n/N (%), mean (standard deviation) or median (1st quartile – 3rd quartile); P values were from chi-square and Kruskal-Wallis for categorical and continuous variables, respectively

AIS denotes acute ischemic stroke, BP blood pressure, GCS Glasgow coma scale, ICH intracerebral hemorrhage, mRS modified Rankin score, NIHSS National Institutes of Health Stroke Scale

*Clinician-reported from brain imaging and other investigations on hospital discharge.

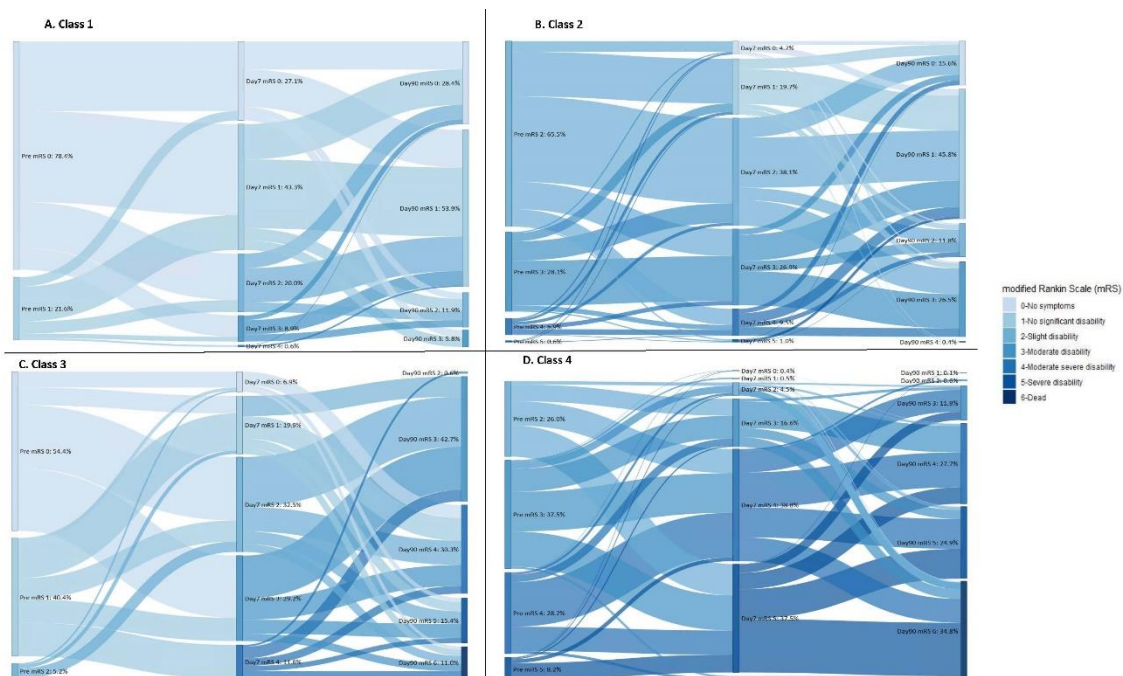
Figure SI Associations of mRS scores 3-6 at Day 90, by change from pre-morbid levels



Footnote: CI denotes confidence interval, mRS modified Rankin scale, OR odds ratio

Model adjusted for country, pre-morbid mRS, age, sex, baseline National Institutes of Health Stroke Scale score, time from symptom onset to intervention, and history of stroke, atrial fibrillation, current smoking, and prior antiplatelet and anticoagulant therapy. Solid boxes represent odds ratio for outcome. Vertical lines represent 95% confidence interval.

Figure SII. Sankey diagram of disability, pre-morbid and at Days 7 and 90, on the mRS by recovery pattern



Footnote: mRS denotes modified Rankin scale

Panel A, maintains stable good function; panel B, makes some meaningful recovery; panel C, shows decline; and panel D, maintains disability. Each color represents a different mRS score; the 3 horizontal positions indicate pre-morbid and Days 7 and 90 time points; the vertical ordering shows mRS scores 0 to 6.