



Article

ISOLATION WITH CHARACTERIZATION OF COLUMBIN AND NOVEL CLERODANE FURANO-DITERPENE WITH GC-MS AND ANTIMICROBIAL ANALYSES OF ESSENTIAL OILS FROM *Sphenocentrum jollyanum* Pierre

Moronkola, D. O., Jaspars, M., Rainer, E., Oluwabusola, E. T., Petrelli, R., Nzekoue, F. K., Cappellacci, L, Giordani, C., Tabudravu, Jioji, Osamudiamen, P., Ajiboye, C. O., Ojah, E.O. and Salawu, K. A.

Available at <https://clock.uclan.ac.uk/45846/>

Moronkola, D. O., Jaspars, M., Rainer, E., Oluwabusola, E. T., Petrelli, R., Nzekoue, F. K., Cappellacci, L, Giordani, C., Tabudravu, Jioji orcid iconORCID: 0000-0002-6930-6572 et al (2021) ISOLATION WITH CHARACTERIZATION OF COLUMBIN AND NOVEL CLERODANE FURANO-DITERPENE WITH GC-MS AND ANTIMICROBIAL ANALYSES OF ESSENTIAL OILS FROM Sphenocentrum jollyanum Pierre. Journal of Chemical Society of Nigeria, 46 (6). pp. 1084-1098. ISSN 0795-2066

It is advisable to refer to the publisher's version if you intend to cite from the work.

doi:10.46602/jcsn.v46i6.689

For more information about UCLan's research in this area go to <http://www.uclan.ac.uk/researchgroups/> and search for <name of research Group>.

For information about Research generally at UCLan please go to <http://www.uclan.ac.uk/research/>

All outputs in CLoK are protected by Intellectual Property Rights law, including Copyright law. Copyright, IPR and Moral Rights for the works on this site are retained by the individual authors and/or other copyright owners. Terms and conditions for use of this material are defined in the policies page.



University of
Central Lancashire
UCLan

CLoK
Central Lancashire online Knowledge
www.clok.uclan.ac.uk



ISOLATION WITH CHARACTERIZATION OF COLUMBIN AND NOVEL CLERODANE FURANO-DITERPENE WITH GC-MS AND ANTIMICROBIAL ANALYSES OF ESSENTIAL OILS FROM *Sphenocentrum jollyanum* Pierre

^{a,b*}D. O. Moronkola; ^bM. Jaspars; ^bE. Rainer; E. T. ^bOluwabusola; ^cR. Petrelli; ^cF. K. Nzekoue; ^cL. Cappellacci; ^{d,e}C. Giordani; ^{b,f}J. N. Tabudravu; ^{a,g}P. Osamudiamen; ^{a,h}C. O. Ajiboye; ^{a,i}E.O. Ojah and ^aK. A. Salawu.

^aDepartment of Chemistry, University of Ibadan, Ibadan, Nigeria.

^bMarine and Biodiversity Centre, Chemistry Department, University of Aberdeen, Scotland, UK.

^cSchool of Pharmacy, Medicinal Chemistry Unit, University of Camerino, Italy.

^dInstituto de Física, Universidad de Antioquia, UdeA, Calle 70 No 52-21, Medellín-Colombia.

^eGrupo Productos Naturales Marinos, Facultad de Ciencias Farmacéuticas Alimentarias, Universidad de Antioquia, UdeA, Calle 70 No 52-21, Medellín-Colombia.

^fSchool of Forensic and Applied Sciences, Faculty of Science and Technology, University of Central Lancashire, PR1 2HE, UK.

^gChemical and Food Sciences Department, Bells University, Sango-Otta, Nigeria.

^hNatural Product Chemistry Laboratory, Natural Product and Medicinal Chemistry Division, CSIR-Indian Institute of Integrative Medicine, Canal Road, Jammu, India..

ⁱDepartment of Chemistry, School of Science and Engineering, Tulane University, New Orleans, Louisiana, USA.

*+2349032442392, +2348023416336; funkemoronkola@gmail.com, do.moronkola@ui.edu.ng,

ABSTRACT

The methanol extract of the seed of *Sphenocentrum jollyanum* Pierre, was subjected to partition chromatography in gradient elutions, using vacuum liquid chromatography (VLC) and HPLC techniques. It led to the isolation of two compounds labelled as DO5d-2 and DO6, whose structures were determined by complete analyses of their spectroscopic data, utilizing modern techniques (LC-MS, ¹H- and ¹³C-NMR, DEPT-NMR, HSQC, HMBC, COSY and NOESY). The Essential oils of the leaf and stem were extracted by hydro-distillation using Clevenger-typed apparatus and analysed by GC-MS technique. It was subsequently subjected to antimicrobial analysis using the agar diffusion method. The major isolated compound – DO6, was further characterized as ‘columbin’, while DO5d-2 was characterized as a new clerodane type furano-diterpene, which has not been previously reported. Essential oils obtained by hydro distillation from leaf and stem of *Sphenocentrum jollyanum* Pierre, were dominated by aldehydes in 10.93% and 15.14% respectively. Fifty (50) compounds were identified in leaf oil comprising 68.73% of it, with phytol (6.62%) and n-hexanol (6.28%) as most abundant compounds. Twenty-eight (28) compounds identified in the stem oil comprised 44.90% containing pentadecanal (14.72%) and phytol (6.38%) as its prominent compounds. The antimicrobial result showed the oil from the leaf was active against all the bacterial and fungi tested, while that from the stem revealed moderate activity against the tested bacterial and fungi.

KEYWORDS: *Sphenocentrum jollyanum*, Menispermaceae, furano-diterpene, columbin, Essential oils, Antimicrobial.

INTRODUCTION

In our quest for drug discovery from natural products, 40 plants, which are utilized in ethno-medicinal treatment of malaria, were investigated, out of which six, including

Sphenocentrum jollyanum were found to be promising [1,2]. *Sphenocentrum jollyanum* Pierre (Menispermaceae) is an evergreen indigenous medicinal plant commonly referred to as ‘akerejupon in Yorubaland of Nigeria [3,4]. It is utilized in the treatment of abdominal

disorders, coughs, high blood pressure, tumors; relieve stomach-ache and constipation for better appetite; an antidote for poisoning (including snake bite) and as food sweetener. Different parts of the plant are utilized in ethno-medicine as anti-diabetic, hepato-protective, antioxidant, molluscicidal, antimalarial, antimicrobial, anti-inflammatory, anthelmintic, antiviral, anti-cholinesterase, anti-hyperglycaemic, anti-arthritis, antitumor and hypotensive activities [5,6]. There are experimental justifications for these bioactivities [7-16]. Compounds isolated and reported from different parts of the plant include isoquinoline alkaloids: palmatine, jatrorrhizine, tetrahydrojatrorrhizine and columbamine; the inositol-derivative: (-)-viburnitol; the sterols: sitosterol, campesterol and stigmaterol; and furano-diterpenes: columbin, isocolumbin and fibleucin [17-20]. A total of 19 compounds have been reported present in the root essential oil of *Sphenocentrum jollyanum*, consisting of monoterpenoids (33.5%) and sesquiterpenoids (56.3%) [21]. However, essential oils from the leaf and stem have not been reported, which this study presents.

So, this study is reporting the chromatographic purifications on the methanol extracts of seed, and the gas chromatographic-mass spectrometric identification of the chemical constituents with the antimicrobial activities of essential oils from the leaf and stem of *Sphenocentrum jollyanum*.

MATERIALS AND METHODS

Plant Collection and Identification:

Sphenocentrum jollyanum Pierre (from Nigeria) were identified and authenticated at the Herbarium, Department of Botany, University of Ibadan where voucher specimens were deposited, with identity number UIH-22643. The plant was sorted into seeds, leaf and stem parts.

Plant Extractions:

Seed part (100 g) of *Sphenocentrum jollyanum* were air-dried and ground to fine powder. This was extracted with methanol and concentrated under reduced pressure, at 40 °C to give 4 g of the crude extract. Leaf and stem essential oils were extracted by hydro-distillation method using all glass Clevenger apparatus designed to British pharmacopoeia specifications [22], with a small quantity of distilled n-hexane (1mL), for 3 hours.

Chromatographic Purification of isolates from the Plant Extract:

Methanol extract (3.83 g) of *Sphenocentrum jollyanum* seed was subjected to partition chromatography, using VLC in gradient elutions utilizing hexane, ethyl acetate and methanol to give 18 sub-fractions (DO1 to DO18). The fractions were dried and dereplicated with the use of LC-MS spectroscopy and reaxys database search to identify any unique masses. As a result of the search, DO5 was purified by the reversed-phase HPLC to obtain DO5d-2, which is compound-1 (8 mg); DO6, DO7 and DO8 were combined and purified by same method to obtain 52.1 mg of compound-2 (DO6) a whitish elongated threadlike crystal.

Instrumentation:

NMR spectra were recorded on Bruker BioSpin GmbH 400 and 600 MHz and Bruker AVANCE III spectrometer at 600 MHz. HRESI-MS spectra were obtained using a Thermo Instruments MS system (LTQ XL/LTQ Orbitrap Discovery) coupled to a Thermo instruments HPLC system (Accela PDA detector, Accela PDA autosampler and Accela pump). Fractionation was carried out with VLC column packed with silica gel and connected to a vacuum pump. Purification was done with semi-preparative gradient Agilent HPLC apparatus (1100series) equipped with Binary pump, Diode array detector (G1315B), Sunfire reversed phase column C18 (5µm 10×250 mm) and Agilent C18 (5 µm 9.4×250 mm), and a mobile phase solvent gradient 95:5% H₂O

(Milli-Q filter water 18 M Ω cm, Millipore, Germany) and 100% MeOH (Sigma Aldrich, UK).

GC-MS Analyses:

GC-MS analyses were carried out by using an Agilent 7890B-5977B GC-MS (Santa Clara, CA, USA) system operating in the EI mode at 70 eV, using an HP-5MS capillary column (5% phenylmethyl polysiloxane, 30 m, 0.25 mm i.d., 0.1 μ m film thickness) (J & W Scientific, Folsom).

GC-MS was programmed with the following conditions: 60 °C for 4 min, then 4 °C/min to 160 °C, followed by 11 °C/min up to 280 °C, held for 15 min, and finally 15 °C/min up to 300 °C. The carrier gas was helium at a flow rate of 1.2 ml/min; the injector temperature was 280 °C, while the transfer line temperature was 300 °C; injection volume: 1 μ l; split ratio: 1:100; run time: 57 min; acquisition mass range: 29–400 amu. Identification of the essential oil components were based on their retention indices (experimentally determined using homologous series of C8–C30 alkanes), and by comparison of their mass spectral fragmentation patterns in computer matching against library Linear retention index and mass spectra taken from Adams and NIST 17[25] FFNSC2 and MAGGI libraries (Adams 2007; NIST 17 2017; FFNSC2 2012). Relative peak area percentages were obtained by peak area normalization without using correction factors and were the mean of three determinations with a RSD% in all cases below 10%.

Antimicrobial Assay:

Agar well diffusion method according to Valgas *et al.*, 2007 was used to screen the antimicrobial activity of the essential oils [23].

The antimicrobial activity was performed using Gram-positive and Gram-negative bacterial and fungi respectively, which are pathogenic and associated with various diseases such as urinary tract infections and alimentary tract infection. The microbes used are *Staphylococcus aureus*, *Escheria coli*, *Bacillus Substilis*, *Pseudomonas aeruginosa*, *Salmonella typhi*, *Klebsiella*

pneumonia, and the fungi are *Candida albicans*, *Rhizopus stolonifer*, *Aspergillus niger*, and *Penicillin notatum*.

RESULTS AND DISCUSSION

Compound-1 DO5d-2 (8 mg) was obtained as a yellowish crystal. Its LC-MS orbit trap experiment gave its HREIMS [M+H] as 375.14413 [Exact mass = 374.1366], with molecular formula of C₂₀H₂₂O₇, corresponding to 10 double bond equivalence, which can be accounted for as four ring systems, three carbonyl groups and three carbon-to-carbon double bonds (Fig. 1).

Infra-red (IR) spectrum confirms the functional group for compound 1 by showing absorptions at 3149 cm⁻¹ (C=C-H); 1505 cm⁻¹ (C=C); very strong and sharp absorptions at 1746 and 1716 cm⁻¹ corresponding to C=O stretches. The O-H_{stretch} absorption is observed as the medium signal at 3464 cm⁻¹, which also indicate it is a weakly H bonded O-H. While 1343, 1301 and 1279 cm⁻¹ accounts for the O-H bending vibrations. The alkoxy C-O_{stretch} is a very strong and sharp absorption at 1150 cm⁻¹ (Fig.2a).

¹H-NMR spectrum (Table 1) showed two peaks at 1.19 and 1.35 ppm representing two methyl protons (H-19 and H-20). The three methylene peaks are at 1.34 and 1.63 (H-6), 1.89 and 2.06 (H-7) and 2.89 and 3.49 ppm (H-11) (Fig.1) (diastereotopic protons). The spectrum indicates presence of two cis coupled olefinic protons (δ 6.47, 1H (dd, J = 5.2, 7.9 Hz, H-2) and (δ 6.29, 1H (dd, J = 7.6, 1.4 Hz, H-3); the three furan methine protons have their absorptions at (δ 6.72, 1H (d, J = 1.8), 8.04 and 7.43, for H-14, H-15, H-16, respectively.

Its ¹³C-NMR spectrum shows absorptions at δ 129.4 (C-2) and 134.3 (C-3) ppm, with three furan methine carbons at 107.4 (C-14), 146.9 (C-15) and 143.4 ppm (C-16) respectively and two methyl peaks at 25.6 (C-19) and 23.6 ppm (C-20). The three methylenes are observed at 24.8 (C-6), 20.8 (C-7) and 45.1 ppm (C-11) respectively. Absorptions of the three carbonyl

carbons are at δ 195.1 (C-12), 173.6 (C-17) and 176.7 (C-18). The two-alkoxy carbons are at δ 74.5 (C-1) and 81.4 (C-4). The information from the HMBC and COSY (table 2) spectra indicated a strong correlation of furan protons signals δ 6.72 (H-14) and δ 7.43 (H-16) to the quaternary carbon δ 195.1 (C-12) and a weak correlation from a methylene proton signal δ 3.49 (H-11), methine proton δ 2.61 (H-10) and methyl proton δ 1.35 (H-20) to the latter (C-12) were observed. Also, the diastereotopic methylene protons signal δ 2.06 (H-7) show connectivity to the carbon signal δ 173.7 (C-17), of the carboxylic acid.

Compound-1 have similar spectroscopic data to that of columbin, with exceptions and major differences at carbon 12, which support compound 1 as the open analogue of the δ -lactone (6-membered cyclic ester) of columbin. Such skeleton is similar to that in spiciflorin, a previously isolated compound from *Cleidion spiciflorum* [24]. Based on these spectra data, the structure of compound 1 is characterized as a new clerodane furano-diterpene (Fig. 1).

52.1 mg of compound **2** was obtained as a whitish threadlike crystal. Its LC-MS orbit trap experiment gave the HREIMS as 358.12344 [Exact mass= 358.1416], which led to the determination of its molecular formula as $C_{20}H_{22}O_6$. 1H - and ^{13}C -NMR data for compound-**2** are identical with the structure of columbin, which was previously reported [19,25]. Its IR spectrum shows major characteristic absorptions that confirm the functional groups in columbin (Fig.2b). Hence its overall characterization correlated with columbin previously reported in literature [19,25].

Columbin has been previously reported as constituent of many ethno-medicinally utilized plants from different parts of the world, with its structural elucidation being constantly reviewed [24-35]. Columbin and its derivatives are also known to have several bioactivities such as reduction of toxicity and remedies, including venom of snakebite from cobra, puff adder and shortening of sleeping time of anaesthetized patients [30], [36-38].

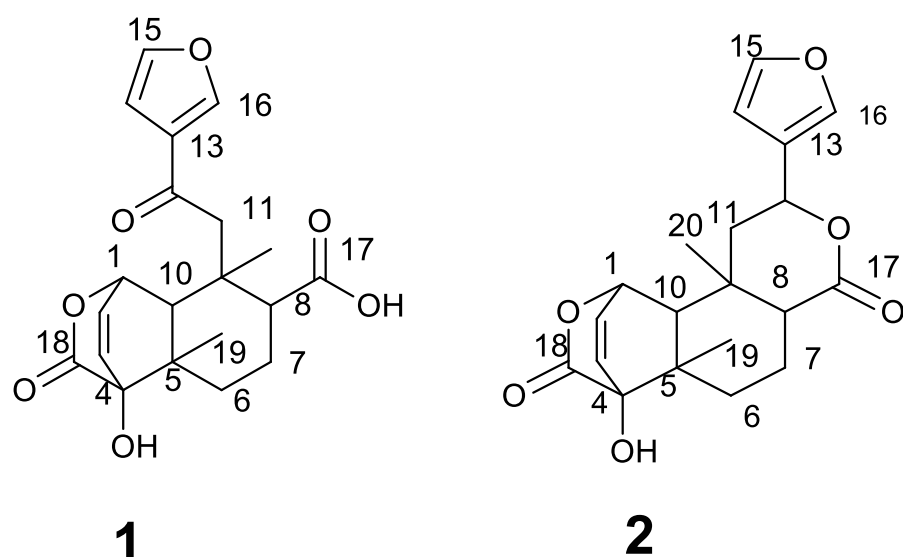
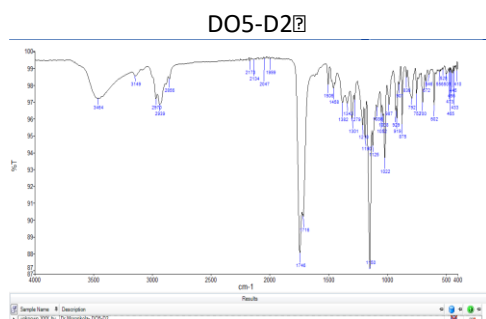


Fig. 1: Structures of **1** and **2** isolated from *Sphenocentrum jollyanum* Pierre

Table 1: ^1H -NMR and ^{13}C -NMR data for compound 1 and 2

Position	Compound 1		Compound 2	
	^{13}C	^1H	^{13}C	^1H
1	74.5	5.31, (1H, m)	74.4	5.15(1H, d, $J=5.4$)
2	129.4	6.47,(1H, dd, $J = 5.2, 7.9$)	129.1	6.46 (1H,dd, $J=13.4, 7.7$)
3	134.3	6.29, (1H, dd, $J = 7.6, 1.4$)	137.4	6.35 (1H,dd, $J=8.0, 6.3, 1.7$)
4	81.4	-	80.5	-
5	37.5	-	37.0	-
6	24.8	1.34,1.63	25.6	1.75 (1H, m), 1.40 (1H,m)
7	20.8	1.89,2.06	17.3	2.63 (1H, m, $J=27.2, 15.7, 8.0$)
8	49.5	2.5	44.5	2.42 (dd, $J=11.0, 1.8$)
9	35.1		35.2	
10	47.6	2.61 (d, $J=7.7$ Hz)	47.9	1.73 (1H,d, $J=6.2$)
11	45.1	2.89,3.49	42.0	2.26(1H,dd, $J=14.9, 4.4$) 1.94 (1H, dd , $J=15.5, 12.0$)
12	195.1		70.9	5.40 (1H, dd) [$J=12.0, 4.2$]
13	128.8		125.0	-
14	107.4	6.72, 1H (d, $J=1.8$)	108.7	6.44(1H,d) [$J=7.5$]
15	146.9	8.04 (s)	144.3	7.43(1H,d/ 1H,s)
16	143.4	7.43 (s)	140.2	7.47(1H,s)
17	173.6		173.5	-
18	176.7		175.6	-
19	25.6	1.19 (s)	24.1	1.07 (3H,s)
20	23.6	1.35 (s)	28.3	1.24 (3H,s)

(a)



(b)

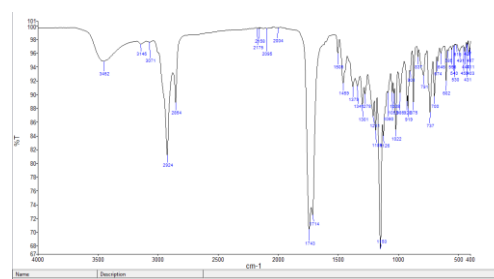


Fig. 2: Infra red (IR) spectrum of compounds 1(a) and 2(b)

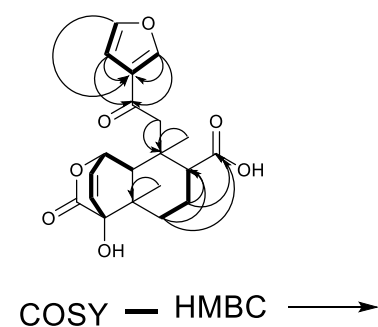


Fig. 3: COSY and HMBC correlation of compound 1

Table 2: COSY and HMBC correlation of compound 1

Carbon #	¹³ C	¹ H	COSY	HMBC
1	74.5	5.31, (1H, m)	H2	
2	129.4	6.47, (1H, dd, J = 5.2, 7.9)	H1, H3	
3	134.3	6.29, (1H, dd, J = 7.6, 1.4)	H2	H6a, H6b
4	81.4	-		H19
5	37.5	-		H11, H20
6	24.8	1.34, 1.63	H7, H8	H8
7	20.8	1.89, 2.06	H6, H10	
8	49.5	2.5	H6	H11
9	35.1			H20
10	47.6	2.61 (d, J=7.7 Hz)	H7	H20
11	45.1	2.89, 3.49		
12	195.1			H11a, H11b
13	128.8			H6a
14	107.4	6.72, 1H (d, J=1.8)		
15	146.9	8.04 (s)		
16	143.4	7.43 (s)		
17	173.6			H7
18	176.7			H10
19	25.6	1.19 (s)		
20	23.6	1.35 (s)		

Chemical Composition of Leaf and Stem Essential Oils of *Sphenocentrum jollyanum* Pierre

Leaf and stem essential oils were obtained from *Sphenocentrum jollyanum* in 0.266% and 0.128% yields, respectively. (Table 3).

Fifty compounds (Table 4) identified in the leaf oil are responsible for 68.73% of it and was dominated by phytol (6.62%), n-hexanol

(6.28%), dihydroedulan (6.19%), methyl salicylate (4.48%) and 4-(dimethoxymethyl)-methylbenzoate (4.48%). Aldehydes (10.93%), hydrocarbons (12.25%) and norisoprenoids (09.57%) were the most abundant classes of compounds present in the leaf oil. Twenty-eight

compounds were identified in the stem oil responsible for 44.90% of it, with pentadecanal (14.72%), phytol (6.38%) and pentacosane (3.45%) as its major compounds.

Both leaf and stem oils are rich in aldehydes (10.93%, 15.14%), hydrocarbons (12.25%, 10.49%) (and oxygenated diterpenes (6.62%, 6.38%) respectively. The phenylpropanoid E-anethole (0.32%) is exclusively identified in the stem oil. Alcohols (7.62%) and the amide (Z)-9-octadecenamide (0.33%) is peculiar to the leaf oil. Norisoprenoids are more abundant in leaf oils (9.57%), while sesquiterpenes are present in greater amount in stem oil (1.35%) (Tables 4 and 5).

The root oil of *S. jollyanum* reported by Aboaba and Ekundayo 2010, showed that α -pinene is in appreciable quantity (11.2%); it is in trace amount in the stem oil studied.

Ionones (3.38% and 2.71% in leaf and stem oils respectively) were also reported in comparable amount in the root oil (2.5%) [21].

Other major reported constituents in the root are 1,8-Cineole (6.3%), Isocaryophyllene 7.7%, α -

eudesmol (26.1%) and γ -terpinene (4.1%) [21], most of which are in minimal amount in the leaf and stem oils.

Phytol is a prominent compound in the two oils (leaf and stem). It is an acyclic diterpenoid, a vital precursor for vitamins E and K1, an antioxidant and a preventive agent against epoxide-induced breast cancer carcinogenesis [39,40]. Methyl salicylate a known constituents and fragrance and perfumery industry has been reported to have significant antioxidant and antimicrobial activities [41]. Pentacosane, nonacosane, tricosane are known to exhibit antibacterial activity [39]. Presence of norisoprenoids such as dihydroedulan and ionones could also be responsible for the anticancer activity of the plant [42]. Linalool in leaf and anethole in stem oil are both bioactive agents in experimental models and has shown antibacterial, sedative and anti-inflammatory activities [43]. The vast importance of the components identified in the leaf and stem essential oils of *Sphenocentrum jollyanum* justifies its use in the treatment of many diseases.

Table 3: Yields of essential oils procured from leaf and stem parts of *Sphenocentrum jollyanum* Pierre

Plant	Parts	Weight of sample(g)	Weight of volatile oil procured (g)	% Yield of essential oil procured
<i>Sphenocentrum jollyanum</i>	Leaf	1000	1.33	0.266
	Stem	800	1.02	0.128

Table 4: Essential oil composition of Leaf and Stem of *Sphenocentrum jollyanum* Pierre

S/N	RT	RI (Calc)	% Composition (Leaf)	% Composition (Stem)	Compound identified	Class of Compounds
1	2.72	783	0.15	-	3-Hexanone	ketone
2	2.78	788	0.44	-	2-Hexanone	ketone
3	2.83	794	0.1	-	3-Hexanol	alcohol
4	2.91	800	3.81	-	Hexanal	aldehyde
5	3.84	844	3.86	-	(E)-2-Hexenal	aldehyde
6	4.13	857	0.65	-	Hex-2-en-1-ol	alcohol
7	4.18	859	6.28	-	n-Hexanol	alcohol
8	4.26	863	1.06	-	p-xylene	hydrocarbon
9	5.87	923	0.32	-	Acetonyl acetone	ketone
10	6.17	932	0.25	-	α -pinene	monoterpene
11	7.11	958	0.2	-	Benzaldehyde	aldehyde
12	7.83	978	0.39	-	1-Octen-3-ol	alcohol
13	8.12	987	0.81	-	6-methyl-5-Hepten-2-one	ketone
14	8.31	992	1.55	-	Myrcene	monoterpene
15	8.66	1002	0.11	-	Trans-2-(2-pentenyl)-Furan	furan
16	8.99	1010	0.09	-	3-Carene	monoterpene
17	9.2	1016	-	0.04	α -Terpinene	monoterpene
18	9.5	1024	-	0.13	p-Cymene	monoterpene
19	9.7	1028	-	0.28	D-Limonene	monoterpene
20	9.77	1030	0.81	0.1	1,8-Cineole	monoterpenoid
21	9.9	1034	0.17	-	2,2,6-trimethyl cyclohexanone	ketone
22	10.3	1043	0.21	-	Benzene acetaldehyde	aldehyde
23	10.9	1058	0.24	0.3	γ -terpinene	monoterpene
24	12.5	1100	0.55	-	Linalool	monoterpenoid
25	12.7	1105	0.18	-	Nonanal	aldehyde
26	15	1166	1.27	0.16	1,3-dimethoxy-Benzene	aromatic ether
27	15.5	1179	2.69	-	Naphthalene	hydrocarbon
28	16	1193	4.48	-	Methyl salicylate	ester
29	16.9	1220	0.66	-	β -cyclocitral	monoterpenoid
30	19.2	1285	-	0.32	E-Anethole	phenylpropanoid
31	19.3	1287	6.19	-	Dihydroedulan	norisoprenoid
32	21.5	1352	0.19	-	1,2-dihydro-1,1,6-trimethyl-Naphthalene	hydrocarbon
33	23.1	1400	0.44	0.17	Tetradecane	hydrocarbon
34	23.2	1405	-	0.11	Methyl eugenol	monoterpenoid

35	23.9	1428	-	1.14	α -Ionone	norisoprenoid
36	24	1428	4.48	-	4-(dimethoxy methyl)-methyl benzoate	ester
37	24.8	1454	2.02	1.65	6,10-dimethyl-5,9-undecadien-2-one	ketone
38	25.5	1477	0.07	-	γ -Muurolene	sesquiterpene
39	25.8	1486	3.38	1.57	Trans-(E)- β -Ionone	norisoprenoid
40	26.1	1496	-	0.42	β -alaskene	sesquiterpene
41	26.5	1509	0.19	0.93	β -bisabolene	sesquiterpene
42	28.5	1580	-	0.76	(3E,7E)-4,8,12-Trimethyltrideca-1,3,7,11-tetraene	hydrocarbon
43	31.2	1682	1.27	0.86	(Z)-3-Heptadecene,	hydrocarbon
44	31.9	1716	2.43	14.72	Pentadecanal	aldehyde
45	33.3	1800	0.19	0.43	Octadecane	hydrocarbon
46	33.5	1818	0.24	0.42	Hexadecanal	aldehyde
47	33.9	1848	0.68	1.53	Hexahydrofarnesyl acetone	sesquiterpenoid
48	34.5	1890	-	8.57	N.I	
49	34.6	1896	-	8.94	N.I	
50	34.9	1922	0.82	2.31	Farnesyl acetone	sesquiterpenoid
51	34.9	1928	0.32	0.96	Methyl-Palmitate	ester
52	36	2086	0.2	-	Z-2-Octadecen-1-ol	alcohol
53	36.9	2154	6.62	6.38	Phytol	diterpenoids
54	37.6	2200	1.81	2.12	Docosane	hydrocarbon
55	38.5	2324	1.08	1.23	Tricosane	hydrocarbon
56	39	2374	0.33	-	(Z)-9-octadecenamide	amide
57	40	2496	1.64	3.45	Pentacosane	hydrocarbon
58	40.4	2556	-	5.52	N.I	
59	40.7	2599	1.31	-	Hexacosane	hydrocarbon
60	42.5	2830	0.93	0.94	Squalene	triterpene
61	43.1	2900	0.57	1.47	Nonacosane	hydrocarbon
		Total % Identified	68.73	44.90		
		Total No of Compounds Identified	50	28		
		Total % EO	68.73	67.93		

Table 5: Comparisons between the class of organic compounds of the leaf and stem essential oils of *Sphenocentrum jollyanum* Pierre

S/N	Class of Organic compounds	% Identified in Leaf Essential oil	% Identified in Stem Essential oil
1.	Alcohols	7.62	-
2.	Aldehyde	10.93	15.14
3.	amide	0.33	-
4.	ester	9.28	0.96
5.	Hydrocarbon	12.25	10.49
6.	Ketone	3.91	1.65
7.	Monoterpenes	2.13	0.75
8.	norisoprenoid	9.57	2.71
9.	Monoterpenoids	2.02	0.21
10.	Diterpenoids	6.62	6.38
11.	Sesquiterpenes	0.26	1.35
12.	Sesquiterpenoid	1.5	3.84
13.	Triterpenes	0.93	0.94
14.	phenylpropanoid	-	0.32
15.	furan	0.11	-
16.	Aromatic ether	1.27	0.16

Antimicrobial activities

The essential oil of the leaf and stem were tested against six (6) bacteria (*Staphylococcus aureus*, *Escheria coli*, *Bacillus Substilis*, *Pseudomonas aeruginosa*, *Salmonella typhi* and *Klebsiella pneumonia*) and four (4) fungi (*Candida albicans*, *Rhizophus stolonifer*, *Aspergillus niger*, and *Penicillin notatum*).

The leaf oil was effective against all the six (6) bacteria and four (4) fungi tested at concentrations between 31.25 µg/mL and 1000 µg/mL. Antibacterial and antifungal activities of the oils are comparable to the activities of the standards (gentamycin and tioconazole) used in

this study. Leaf essential oil exhibited good antibacterial and antifungal activities.

The stem essential oil was effective against all the six (6) bacteria at concentrations between 500µg/mL and 1000µg/mL. While at concentration of 250µg/mL, it was effective on *Staphylococcus aureus*, *Bacillus substilis*, *Pseudomonas aeruginosa* and *Salmonella typhi*. (Table 7).

Based on the results obtained, it can be inferred that the essential oil of the stem of *Sphenocentrum jollyanum* has moderate antibacterial and antifungal properties.

Table 6: Antibacterial activities of leaf and stem essential oils *Sphenocentrum jollyanum* (Clear zones of inhibition (mm))

S/N	Conc. (µg/ml) of oil	Leaf EO	Stem EO	Leaf EO	Stem EO	Leaf EO	Stem EO	Leaf EO	Stem EO	Leaf EO	Stem EO	Leaf EO	Stem EO
		<i>S. aureus</i> (mm)		<i>E. coli</i> (mm)		<i>B. subtilis</i> (mm)		<i>P. aeruginosa</i> (mm)		<i>S. typhi</i> (mm)		<i>K. pneumonia</i> (mm)	
1	1000	28	18	26	14	28	20	26	16	24	14	27	12
2	500	24	16	22	12	24	18	22	14	21	12	25	10
3	250	22	14	18	-	21	16	18	10	17	10	23	-
4	125	18	12	14	-	18	14	15	-	14	-	20	-
5	62.5	14	10	12	-	16	10	13	-	12	-	18	-
6	31.25	12	-	10	-	14	-	11	-	10	-	14	-
7	Methanol(-ve)	-	-	-	-	-	-	-	-	-	-	-	-
8	Gentamycin(+ve)	38	38	38	38	38	38	36	36	36	36	38	38

Key: S.a = *Staphylococcus aureus*, E.c = *Escherichia coli*, B. sub = *Bacillus Subtilis*, Ps.a = *Pseudomonas aeruginosa*, Sal = *Salmonella typhi*, Kleb = *Klebsiella pneumonia*, - = Not detected

It is noteworthy that essential oils are more active against gram-positive than gram-negative bacteria [44, 45], this was also established in our results. Gram-negative bacteria, which are *Escherichia coli*, *Pseudomonas aeruginosa*, *Salmonella typhimurium* and *Klebsiella pneumoniae* are less susceptible to the effect of

the stem essential oil (Table 6). This can be due to the presence of a double layer of phospholipids which is linked to the inner membrane by lipoprotein and lipopolysaccharide in the cell wall of gram-negative bacteria that serve as a barrier from hydrophobic substances [44].

Table 7: Antifungal activities of essential oil of leaf and stem of *Sphenocentrum jollyanum* (zone of inhibition (mm))

S/N	Conc(µg/ml)	Leaf EO	Stem EO	Leaf EO	Stem EO	Leaf EO	Stem EO	Leaf EO	Stem EO
		<i>C.a</i>		<i>A.n</i>		<i>Pen</i>		<i>Rhiz</i>	
1	1000	20	16	20	18	18	14	18	-
2	500	18	14	18	16	16	12	16	-
3	250	16	12	16	14	14	10	14	-
4	125	14	10	14	10	13	-	12	-
5	62.5	12	-	12	-	11	-	10	-
6	31.25	10	-	10	-	10	-	10	-
7	Methanol(-ve)	-	-	-	-	-	-	-	-
8	Tioconazole(+ve)	28	28	26	26	28	28	28	28

Key: C.a = *Candida albicans*, Rhiz = *Rhizopus stolonifer*, A.n = *Aspergillus niger*
Pen = *Penicillin notatum*, - = Not detected

CONCLUSIONS

Two compounds (a novel clerodane furano-diterpene and columbin) were isolated and characterized from *Sphenocentrum jollyanum* Pierre (Menispermaceae). The structural elucidation of this new clerodane compound-1 is established in this study, and it has structural similarity to spiciflorin in literature [24].

Columbin has been earlier reported in fruit extract of *Sphenocentrum jollyanum* [19] and other plants [24, 25, 27-37], but this is the first time it is reported as a major compound in the seed extract of *Sphenocentrum jollyanum*. We suggest biogenetic relationship between the new clerodane diterpenoid (compound-1) and columbin (compound-2) in the methanol extract of seed of *Sphenocentrum jollyanum* Pierre (Menispermaceae).

The essential oils from leaf and stem parts are fairly terpenoidal, also dominated by aldehydes, norisoprenoids, alcohols and hydrocarbons. The antimicrobial result showed that the oil from the leaf exhibited good antimicrobial activity while the stem oil gave moderate activity. These compositions and observed inhibition of selected bacteria and fungi by the oils of *Sphenocentrum jollyanum* makes it a promising antimicrobial agent.

Our studies on chemical constituents of this plant reveal and assist in understanding the vast ethno-medicinal and folkloric utilization of it. This study is important in natural product drug discovery in a bid to discover active biological compounds.

ACKNOWLEDGEMENTS

Authors are grateful to ACTF DWS for postdoctoral fellowships utilized by D.O. Moronkola (honorary ID number: 42015006) in Chemistry Department, Meston Building, University of Aberdeen, Aberdeen, UK. It was an avenue for use of state-of-the-art analytical equipment for better phytochemical studies, and exposure to the use of modern analytical

techniques and tools. We also acknowledge supports from the following: Chemical Science Department, OOU and Chemistry Department, University of Ibadan (DOM's 400 level and M.Sc project students) who assisted in collection of plant samples and preparation of extracts; The Herbarium staff headed by Prof. A.E. Ayodele, and Mr E. Donatus, University of Ibadan, Nigeria for scientific identification of plant; Owoyinfas in Luton, Ajani Gbenga and Aremus in London for diverse assistances during my short stay in UK.

REFERENCES:

1. DO Moronkola, AA Adedeji, IO Oyewole, IA Ogunwande and IA Oladosu. 2009. Survey and Accounts of Anti-Malaria Ethno medicinal Herbs Used In Southwestern Nigeria and Vector Repellant Activities of Their Volatile Oils. The African Network for Drugs and Diagnostics [ANDI], 2nd Stakeholders Meeting & Conference. 4th to 7th October, 2009, Medical Research Council [MRC], Cape Town, South Africa.
2. DO Moronkola, OO Olaoluwa, IA Oladosu, SA Aboaba and OO Aiyelaagbe. 2018. Phytochemical and antimicrobial activities of extracts from six medicinal plants utilized as anti-malarial in ethno-medicine. The Pharmaceutical and Chemical Journal, 2018, Vol. 5, (2): 52-61.
3. HM Burkill. 1997. The useful plants of West Tropical Africa. 2nd Edition. Volume 4, Families M–R. Royal Botanic Gardens, Kew, Richmond, United Kingdom. 969
4. AJFM Dekker. 1983. A revision of the genera *Penianthus* Miens and *Sphenocentrum* Pierre (Menispermaceae) of West and Central Africa. Bulletin du Jardin Botanique National de Belgique 53(1–2): 17–66.
5. A Egunyomi, TR Fasola and O Oladunjoye. 2005. Charring medicinal plants: a traditional method of preparing phytomedicines in southwestern Nigeria. Ethnobotany Research and Applications 3: 73–77.
6. TO Odugbemi, OR Akinsulire, IE Aibinu and PO Fabeku. 2007. Medicinal Plants Useful For Malaria Therapy In Okeigbo, Ondo State, Southwest Nigeria. African Journal of Traditional,

Complementary and Alternative Medicines, 2007, 4: 191-198.

7. GO Mbaka, OO Adeyemi, SO Ogbonnia, CC Noronha and OA Okanlawon. 2011. The Protective Effect of Ethanol Root Extract of *Sphenocentrum jollyanum*. on the Morphology of Pancreatic Beta Cells of Alloxan Challenged Rabbits. Journal of Morphological Science, 2011, 28: 37-45.

8. GO Mbaka, OO Adeyemi, CC Noronha, CC Anunobi and AO Okanlawon. 2009. Anti-Hyperglycaemic and Hypoglycaemic Effects of Ethanol Root Extract of *Sphenocentrum jollyanum* in Normal and Alloxan-Induced Diabetic Rabbits. Brazilian Journal of Morphological Sciences, 2009, 26: 123-127.

9. GO Mbaka, OO Adeyemi, A Osinubi, CC Noronha and OA Okanlawon. 2009. The Effect of Aqueous Root Extract of *Sphenocentrum jollyanum* on Blood Glucose Level of Rabbits. Journal of Medicinal Plants Research, 2009, 3: 870-874.

10. GO Mbaka, OO Adeyemi, CC Anunobi, CC Noronha and OA Okanlawon. 2008. Anti-Hyperglycaemic Effects of Ethanol Leaf Extract of *Sphenocentrum jollyanum* in Normal and Alloxan-Induced Diabetic Rabbits. Global Journal of Pharmacology, 2008, 2: 46-51.

11. R Nia, DH Paper, EE Essien, KC Lyadi, AIL Bassey, AB Antai, and G Franz. 2004. Evaluation of the Anti-oxidant and Anti-angiogenic Effects of *Sphenocentrum jollyanum* Pierre. African Journal of Biomedical Research, 2004, 7: 129-132.

12. JM Oke and MO Hamburger. 2002. Screening of some Nigerian medicinal plants for antioxidant activity using 2,2-diphenyl-picrylhydrazyl radical. African Journal of Biomedical Research 5: 77–79.

13. Y Raji, OO Fadare, RA Adisa and SA Salami. 2006. Comprehensive assessment of the effect of *Sphenocentrum jollyanum* root extract on male reproductive activity in albino rats. Reproductive Medicine and Biology 5(4): 283–292.

14. JO Moody, VA Robert and JDA Hughes. 2002. Antiviral activities of selected medicinal

plants II: Effect of extracts of *Diospyros bacteri*, *Diospyros monbutensis* and *Sphenocentrum jollyanum* on Cowpea Mosaic viruses. Pharmaceutical Biology 40(5): 342–345.

15. KN Muko, PC Ohiri and CO Ezugwu. 1998. Antipyretic and analgesic activities of *Sphenocentrum jollyanum*. Nigerian Journal of Natural Products and Medicine 2: 52–53.

16. R Nia, DH Paper, EE Essien, KC Iyadi, AIL Bassey, AB Antai and G Franz. 2004. Evaluation of the anti-oxidant and anti-angiogenic effects of *Sphenocentrum jollyanum* Pierre. African Journal of Biomedical Research 7: 129–132.

17. SA Aboaba, O Ekundayo. 2010. Constituents, Antibacterial Activities and Toxicological Assay of Essential Oils of *Artocarpus communis* Forst (Moraceae) and *Sphenocentrum jollyanum*, International Journal of Biological and Chemical Sciences, 2010, 4: 1455-1461.

18. JNT Gilbert, DW Mathieson and MB Patel. 1967. The bitter principle of *Sphenocentrum jollyanum*. Phytochemistry, Vol.6, No.1, 1967, pages 135-136.

19. JO Moody, VA Robert, JD Connolly and PJ Houghton. 2005. Anti-inflammatory activities of the methanol extracts and an isolated furanoditerpene constituent of *Sphenocentrum jollyanum* Pierre (Menispermaceae). Journal of Ethnopharmacology 104(1–2): 87–91.

20. D Dwuma-Badu, AN Tackie, TU Okarter, PL Schiff, JE Knapp and DJ Slatkin. 1976. Constituents of West African medicinal plants. XVIII. Constituents of *Sphenocentrum jollyanum* Pierre (Menispermaceae). Phytochemistry 15(12): 2027.

21. SA Aboaba and O Ekundayo. 2010. Constituents, antibacterial activities and toxicological assay of essential oils of *Artocarpus communis* Forst (Moraceae) and *Sphenocentrum jollyanum* (Menispermaceae). International Journal of Biological and Chemical Sciences, 4(October), 1455–1461.

22. The British Pharmacopoeia 1980. 1980. Drug and Therapeutics Bulletin, 18(25), 100–100. <https://doi.org/10.1136/DTB.18.25.100>

23. C Valgas, SM De Souza, EFA Smânia, and AS Jr. 2007. Screening methods to determine antibacterial activity of natural products, 369–380.
24. Warea Naengchomnong, PM Pinho, A Kijjoa, P Sawangwong, MJ Gonzalez, AMS Silva, G Eaton and W Herz. 2006. Clerodanes and other constituents of *Cleidion spiciflorum* Phytochemistry 67 (2006) 1029–1033.
25. NL Hungerford, DPA Sands and W Kitching. 1998. Isolation and Structure of Some Constituents of the Australian Medicinal Plant *Tinospora smilacina* ('Snakevine'). Aust. J. Chem., 1998, 51, 1103–1111.
26. M Yonemitsu, N Fukuda, T Kimura, T Komori. 1986. Studies on the constituents of *Jateorhiza palmate* Miers (colombo root). I. Separation and structure of a new furanoid diterpene glucoside (palmatoside A). Liebigs Ann. Chem. pp. 1327–1333.
27. PG Waterman, CM Hasan, A Jabbar. 1985. Columbin from the root of *Momordica cochinchinensis*: high-field NMR studies. Planta Med 51(2):181–182
28. MK Choudhury, AK Haruna, EC Johnson and PJ Houghton. 1997. Structural Education of Columbin, A Diterpene Isolated From The Rhizomes Of *Artisotlochia albida*. Indian J. Pharm. Sci., 1997, 59, 34-37
29. AK Haruna and MK Choudhury. 1995. In Vivo Antisnake Venom Activity of a Furanoid Diterpene from *Artisotlochia albida* Duch (Artisotlochiaceae). Indian J. Pharm. Sci., 1995, 57, 222-224.
30. V Wazir, R Maurya and RS Kapil. 1995. Cordioside, a clerodane furano diterpene glucoside from *Tinospora cordifolia*, 1995, 38(2), 447-449.
31. K Swaminathan, UC Sinha, R Ramakumar, RK Bhatt and BK Sabata. 1989. Structure of columbin, a diterpenoid furanolactone from *Tinospora cordifolia* Miers. ActaCrystallogr., Sect. C, 45, 300-303.
32. C Ih-Sheng. 1975. J. Chin. Chem. Soc. (Taipei), 1975, 22, 271.
33. S Chun-Qing, Z Ren-Sheng and X Ya-Ming. 1988. Acta Chim. Sin., 1988, 46, 1049.
34. JU Oguakwa. 1985. Fitoterapia, 1985, 56, 59. ^[1]_{SEP}
35. KH Overton, NG Weir and AJ Wylie. 1966. Stereochemistry of Colombo Root Bitter Principles. Chem. Soc. C, (17) 1482.
36. KK Cheung, D Melville, KH Overton, JM Robertson and GA Sim. 1966. The stereochemistry of isocolumbin: X-ray analysis of the 1-p-iodophenyl-3-phenylpyrazoline adduct of isocolumbin. J. Chem. Soc. B, 1966, 853.
37. K Wada, T Kurihara, M Yagi, R Kobayashi, H Kami-naga, K Toi and M Haga. 1995. Columbin isolated from *calumbae radix* affects the sleeping time of anesthetized mice Biol. Pharm. Bull., 1995, 18, 634.
38. K Wada. 1996. Studies on the constituents of edible and medicinal plants to affect the metabolizing system in mammals (in Japanese with English abstract). Natural Medicines 50: 195–203.
39. O Konovalova, E Gergel and V Herhel. 2013. GC-MS Analysis of Bioactive Components of *Shepherdia argentea* (Pursh .) Nutt . from Ukrainian Flora. The Pharma Innovation - Journal 1–5.
40. K Parameswararao, BV Ramesh, CS Prasad and MC Rao. 2016. GC-MS Screening of Bioactive Compounds from Seeds of *Croton bonplandianum* baill (Euphorbiaceae), 8(9), 341–348.
41. GK Oloyede and MS Oyelola. 2013. Chrysen-2-ol derivative from west indian wood nettle *Laportea aestuans* (L.) Chew inhibits oxidation and microbial growth in vitro. EXCLI Journal, 12, 894–906.
42. EO Ojah, DO Moronkola, CO Ajiboye, TL Yusuf and MA Adeniyi-Akee. 2021. Chemical Compositions, Antioxidant and Anti-diabetic Activities of Root Wood and Root Bark Essential Oils from *Pterocarpus soyauxii* TAUB. Journal of Essential Oil-Bearing Plants, 24(1), 53–67.
<https://doi.org/10.1080/0972060X.2020.1864483>

43. RN Almeida, MDF De Agra, F Negromonte, S Maior and DP Sousa De. 2011. Essential Oils and Their Constituents: Anticonvulsant Activity. *Molecules*, 2726–2742. <https://doi.org/10.3390/molecules16032726>

44. N Canillac and A Mourey. 2001. Antibacterial activity of the essential oil of *Picea excelsa* on *Listeria*, *Staphylococcus aureus* and *coliform* bacteria. *Food Microbiology*, 18(3), 261–268. <https://doi.org/10.1006/fmic.2000.0397>

45. O Sinbad Olorunnisola, S Fadahunsi and P Adegbola. 2017. A Review on Ethno-Medicinal and Pharmacological Activities of *Sphenocentrum jollyanum* Pierre. *Journal of Multidisciplinary Digital Publishing Institute*. <https://doi.org/10.3390/medicines4030050>