



Ethnic variation in asthma healthcare utilisation and exacerbation: systematic review and meta-analysis

AbdulQadr Akin-Imran ^{1,2}, Achint Bajpai ³, Dáire McCartan ¹, Liam G. Heaney ⁴, Frank Kee ¹, Charlene Redmond ¹ and John Busby ¹

¹Centre for Public Health, School of Medicine, Dentistry and Biomedical Sciences, Queen's University, Belfast, UK. ²Faculty of Health and Life Sciences, Oxford Brookes University, Oxford, UK. ³University of Central Lancashire, University of Central Lancashire Faculty of Clinical and Biomedical Sciences, Preston, UK. ⁴Centre for Experimental Medicine, School of Medicine, Dentistry and Biomedical Sciences, Queen's University, Belfast, UK.

Corresponding author: John Busby (John.Busby@qub.ac.uk)



Shareable abstract (@ERSpublications)

Patients from ethnic minority groups have substantially increased secondary healthcare utilisation and exacerbations with evidence suggestive of lower primary care attendances #asthma <https://bit.ly/3lvKWgY>

Cite this article as: Akin-Imran AQ, Bajpai A, McCartan D, *et al.* Ethnic variation in asthma healthcare utilisation and exacerbation: systematic review and meta-analysis. *ERJ Open Res* 2023; 9: 00591-2022 [DOI: 10.1183/23120541.00591-2022].

Copyright ©The authors 2023

This version is distributed under the terms of the Creative Commons Attribution Licence 4.0.

Received: 9 Nov 2022
Accepted: 10 Feb 2023

Abstract

Background Patients from ethnic minority groups (EMGs) frequently report poorer asthma outcomes; however, a broad synthesis summarising ethnic disparities is yet to be undertaken. What is the magnitude of ethnic disparities in asthma healthcare utilisation, exacerbations and mortality?

Methods MEDLINE, Embase and Web of Science databases were searched for studies reporting ethnic variation in asthma healthcare outcomes (primary care attendance, exacerbation, emergency department (ED) visits, hospitalisation, hospital readmission, ventilation/intubation and mortality) between White patients and those from EMGs. Estimates were displayed using forest plots and random-effects models were used to calculate pooled estimates. We conducted subgroup analyses to explore heterogeneity, including by specific ethnicity (Black, Hispanic, Asian and other).

Results 65 studies, comprising 699 882 patients, were included. Most studies (92.3%) were conducted in the United States of America (USA). Patients from EMGs had evidence suggestive of lower levels of primary care attendance (OR 0.72, 95% CI 0.48–1.09), but substantially higher ED visits (OR 1.74, 95% CI 1.53–1.98), hospitalisations (OR 1.63, 95% CI 1.48–1.79) and ventilation/intubation (OR 2.67, 95% CI 1.65–4.31) when compared to White patients. In addition, we found evidence suggestive of increased hospital readmissions (OR 1.19, 95% CI 0.90–1.57) and exacerbation rates (OR 1.10, 95% CI 0.94–1.28) among EMGs. No eligible studies explored disparities in mortality. ED visits were much higher among Black and Hispanic patients, while Asian and other ethnicities had similar rates to White patients.

Conclusions EMGs had higher secondary care utilisation and exacerbations. Despite the global importance of this issue, the majority of studies were performed in the USA. Further research into the causes of these disparities, including whether these vary by specific ethnicity, is required to aid the design of effective interventions.

Introduction

Asthma is one of the most common chronic diseases in the world, affecting >400 million patients [1]. Although it is prevalent across society [2], the burden of asthma is known to disproportionately affect patients from ethnic minority groups (EMGs). Compared with White Americans, EMGs have higher asthma prevalence, morbidity and adverse outcomes [3, 4]. Higher rates of emergency department (ED) visits, hospital admission and asthma mortality have been reported among EMGs when compared to White patients [3, 4].

Language barriers, poorer housing conditions and inadequate self-management have previously been considered as potential contributors to the observed ethnic disparities in asthma outcomes [5, 6]. Belonging



to an EMG is associated with lower socioeconomic status in many countries [7], which can make it difficult to disentangle differences driven by ethnic factors such as culture, from those related to socioeconomic disadvantage. A recent study by the Severe Asthma Research Program in the USA found that the greater ED use observed in Black patients was entirely explained after accounting for socioeconomic circumstances and environmental factors [8]. Cultural differences in asthma medication adherence and health literacy [9, 10] have also been previously identified and are known to materially affect asthma outcomes [11, 12].

Despite substantial literature examining ethnic differences in asthma outcomes, previous systematic reviews have been limited to specific countries, populations (*e.g.* paediatrics) or outcomes [13, 14]. Despite a well-established literature on the topic from the USA, where issues around ethnic disadvantage are of particular interest, these studies have yet to be systematically synthesised. A broader analysis, including all relevant evidence worldwide, would help improve knowledge of potential ethnic inequalities and facilitate an investigation of where disparities are largest, and action is most needed to improve and standardise care.

Methods

Search strategy

A search strategy was developed to identify studies reporting differences in asthma healthcare outcomes and resource utilisation between White and EMG patients (supplementary tables S1 and S2). The specific outcomes of interest were primary care attendance, asthma exacerbation, ED visit, hospitalisation, ventilation/intubation, hospital readmission and asthma mortality. Three electronic databases (MEDLINE, Embase and Web of Science) were searched from inception (*i.e.* 1946 for MEDLINE, 1974 for Embase and 1997 for Web of Science) on 4 January 2023. Individual search results were combined, duplicates removed automatically using an online software (Covidence; Veritas Health Innovation, Australia) and manually checked. This systematic review was reported in accordance with the Preferred Reporting Items for Systematic Reviews and Meta-Analyses statement [15] and it was registered on PROSPERO prior to data extraction (registration number CRD42020200392). Patient representatives were not involved in the design, analysis or interpretation of the study.

Study eligibility and selection

Studies were eligible if they were reported in peer-reviewed journals and all participants had physician-diagnosed or self-reported asthma. Asthma was defined as either a physician-diagnosed or self-reported (*e.g.* asthma diagnosis reported by the patient, but not corroborated through linkage to medical records). We excluded ecological studies as these are prone to the ecological bias [16]. Due to resource constraints our analysis was limited to studies published in the English language although a recent study concluded that this restriction is unlikely to have a material impact on the conclusion of a systematic review [17]. Titles and abstracts were screened independently by three reviewers (A. Akin-Imran, A. Bajpai and D. McCartan) and full texts were retrieved if potentially relevant. Three reviewers (A. Akin-Imran, A. Bajpai and D. McCartan) screened the full-text articles. Two independent reviewers (A. Akin-Imran and D. McCartan) conducted backward and forward citation searches on all studies initially included from the electronic search using Scopus (Elsevier, USA) and Web of Science (Clarivate Analytics, USA). Authors were not contacted to provide additional data outside that available in the published study. Throughout the process, disagreements were resolved by consensus or through referral to an additional reviewer (J. Busby).

Data extraction and risk of assessment

Four reviewers (A. Akin-Imran, A. Bajpai, D. McCartan and C. Redmond) extracted data in duplicate using a pre-defined data extraction form (supplementary table S3). We extracted details on the study (country, design, clinical setting and time period), characteristics of the population (*e.g.* size, mean age, sex) and statistical methodology (*e.g.* confounder adjustment).

Odds ratios and their corresponding 95% confidence intervals comparing relevant outcomes were extracted. The principal quantitative synthesis involved a comparison of White patients *versus* those from EMGs. Univariable and multivariable effect estimates were retrieved; however, the multivariable estimate was used when possible. Unadjusted effect estimates and 95% confidence intervals were calculated manually where necessary using the methods outlined in the Cochrane Handbook [18]. Where studies presented multiple eligible estimates (*e.g.* separate estimates comparing Black *versus* White and Asian *versus* White), we used a within-study meta-analysis to calculate a pooled estimate comparing all EMGs *versus* White patients for that study.

The methodological quality of the included studies was assessed using the Newcastle–Ottawa Quality Assessment Scale for cohort, case–control [19] and cross-sectional [20] studies, using pre-defined assessment criteria (supplementary table S4). Studies were scored across three domains: selection of participants, comparability and ascertainment or assessment of the exposure and outcome. Domain scores were totalled, and each study was awarded an overall quality rating (poor or good).

Data synthesis and analysis

Descriptive statistics including means, medians and percentages were calculated to summarise study characteristics. Meta-analyses were conducted using a random-effects model, as described by DER-SIMONIAN and LAIRD [21], with the degree of statistical heterogeneity assessed using the I^2 statistic. Hazard ratios and relative risks were treated as odds ratios to facilitate the pooling of estimates. We conducted sensitivity analyses restricting to studies deemed good-quality. We undertook several pre-specified subgroup analyses to explore heterogeneity including by specific ethnic groups (Black, Hispanic, Asian and other), patient age (paediatric *versus* others), study data collection frame (pre- *versus* post-2010) and healthcare financing (public *versus* private). Subgroups were only compared if they comprised at least four studies, in line with recommendations [22]. Both funnel plots and Egger's test were used to investigate potential small study effects for all outcomes comprising ≥ 10 studies [23]. Analyses were performed using STATA (version 14).

Results

The electronic search identified 9941 unique studies (figure 1), of which 205 were retained after title and abstract screening. A further 154 studies were excluded after full-text review due to failing to report a relevant outcome or exposure (n=63), an ecological study design (n=51), comprising nonasthmatic patients (n=28) or conference abstracts (n=12), leaving 51 eligible studies. An additional 14 studies were included following the forward and backward citation searches. Eight of the included studies were only included in the narrative synthesis: three studies [24–26] presented only narrative results, and five [27–31] did not provide sufficient details for comparative effect estimates to be derived. Therefore, 57 of the 65 studies were included in the meta-analysis.

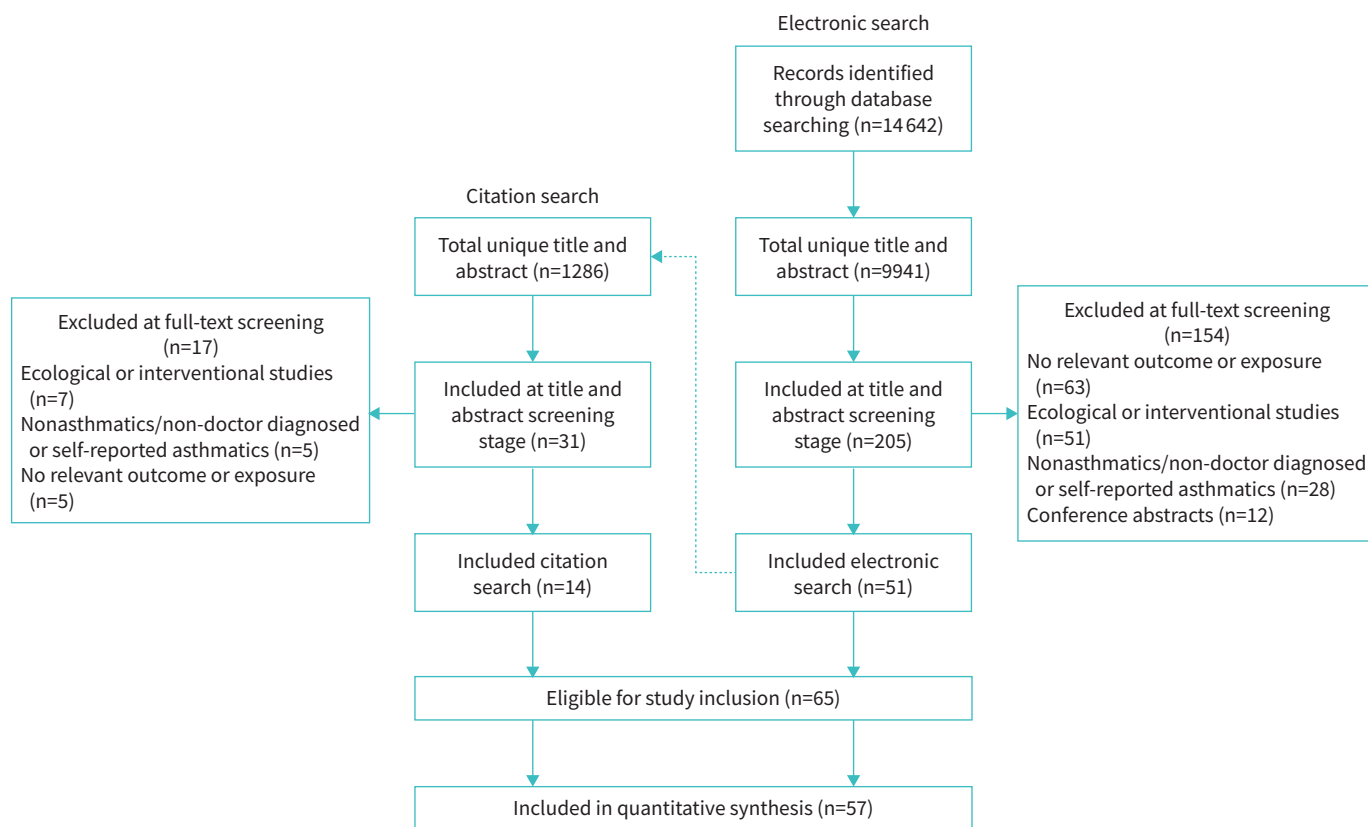


FIGURE 1 Preferred Reporting Items for Systematic Reviews and Meta-Analyses flowchart diagram outlining the study search and selection process.

Quality assessment and small-study effects

The methodological quality of the included studies was deemed good in 37 (56.9%) studies (supplementary table S5). The most common factor for a study being deemed poor-quality was a failure to adjust for at least age and/or sex, which occurred in all but three of the 28 poor-quality studies. Within the cohort studies, there were also potential issues with outcome ascertainment resulting from patient self-report (n=8, 38.1% of poor-quality studies), whereas in cross-sectional studies the response rate was frequently unsatisfactory (n=12, 60.0%). Overall, studies differed considerably in the level of statistical adjustment used in their analysis. Of those that performed some adjustment (n=39), most (89.7%) adjusted for age and/or sex, while some additionally accounted for income (41.0%), asthma severity (33.3%) and education (30.8%) (supplementary table S6).

There was some evidence of small-study effects in studies investigating ED visits ($p < 0.001$), with the funnel plot displaying a marked asymmetry in which substantially more studies reported marked ethnic disparities than would have been expected (supplementary figure S1). However, no indication of small-study effects was observed for hospitalisations (supplementary figure S2).

Study characteristics

The 65 included studies included 699 882 patients, with the population size varying considerably across studies, from 80 to 133 509 patients. Most studies (n=35, 53.8%) were published before 2010 and the majority were conducted in the USA (n=60, 92.3%), including three set in both the USA and Canada [32–34]. Three studies [35–37] were conducted in the United Kingdom (UK), while a single study was conducted in each of New Zealand [38] and Canada [39] (table 1). The majority of studies were cohort (n=44, 67.7%) or cross-sectional (n=20, 30.8%), with only one employing a case–control design. The median (interquartile range) age of study populations was 35.2 (10.1–49.5) years, with 23 (43.1%) studies reporting solely on paediatric patients. Most studies investigated the effect of ethnicity on multiple outcomes, but most commonly reported on differences in ED visits (n=41, 40.6%) and hospitalisations (n=33, 32.7%). Studies rarely investigated differences in exacerbation (n=10, 9.9%), hospital readmission (n=6, 5.9%), ventilation/intubation (n=5, 5.0%) and primary care attendance (n=4, 4.0%). None of the studies included in our review reported on asthma mortality (table 1).

The association between ethnicity and healthcare utilisation

Primary care attendances were lower among EMG patients when compared to White patients; however, this was imprecisely estimated (OR 0.72, 95% CI 0.48–1.09; $I^2=70.5%$) (table 2 and supplementary figure S3) compared to White patients. However, EMGs had higher secondary healthcare utilisation (ED visits, hospital admission and hospital readmission). The proportion attending ED was higher (OR 1.74, 95% CI 1.53–1.98) among patients of EMGs than their White counterparts, although there was evidence of between-study heterogeneity ($I^2=90.3%$) (figure 2). Findings of higher ED visits among EMGs were largely consistent across individual studies (91.7%), including within a recent study from the USA which reported that 14% of White patients attended the ED in the past 12 months due to their asthma compared to 32% of Black patients (adjusted OR 2.34, 95% CI 1.65–3.33; $p < 0.001$) and 23% of Hispanic patients (adjusted OR 2.17, 95% CI 1.51–3.10; $p < 0.001$) [84]. Similarly, patients from EMGs were substantially more likely to be hospitalised (OR 1.63, 95% CI 1.48–1.79; $I^2=43.1%$) (figure 3), while there was a trend for increased rates of hospital readmissions (OR 1.19, 95% CI 0.90–1.57; $I^2=78.0%$) (supplementary figure S4). In addition, patients from EMGs were more likely to be ventilated/intubated (OR 2.67, 95% CI 1.65–4.31; $I^2=74.2%$) (supplementary figure S5). The magnitude of these differences varied between studies and there was substantial heterogeneity between studies across all outcomes.

The association between ethnicity and asthma exacerbations

Few studies explored the association between ethnicity and asthma exacerbation (table 2), with most (71.4%) reporting higher rates among EMGs (pooled OR 1.10, 95% CI 0.94–1.28; $I^2=78.8%$) (supplementary figure S6).

Sensitivity and subgroup analyses

Our overall conclusions were similar in sensitivity analyses restricted to studies deemed good-quality; however, we found a stronger and statistically significant relationship between EMGs and lower primary care attendance in this analysis (OR 0.61, 95% CI 0.44–0.83; $I^2=6.9%$) (table 2). The pooled estimate for the other outcomes were similar when restricting to good quality studies, and in most cases, the heterogeneity was substantially reduced (table 2).

The pattern of secondary healthcare utilisation differed by specific ethnicity (supplementary table S7). Rates of ED visits were much higher among Black (OR 1.86, 95% CI 1.68–2.06) and Hispanic (OR 1.52,

TABLE 1 Demographic and characteristics of studies evaluating healthcare utilisation of asthmatic patients

First author, year [reference]	Country	Design	Patients	Female, %	Mean age, years	Clinical setting	Exposure	Outcomes measured
MITCHELL, 1988 [38]	New Zealand	CS	355	NS	5.8	General population [#]	Asian	Readmission
LOZANO, 1995 [40]	USA	CS	1945	41.7	8.1	Insurance	Black	ED visit, hospitalisation, PCA
SARPONG, 1997 [41]	USA	CS	138	65.0	10.1	Secondary care	Black	Hospitalisation
JOSEPH, 1998 [42]	USA	CS	570	38.0	NS	Secondary care	Black	ED visit, hospitalisation
ZORATTI, 1998 [25]	USA	CSS	2073	65.0	30.7	Insurance	Black	ED visit, hospitalisation, PCA
BLIXEN, 1999 [43]	USA	CS	193	77.2	37.3	Hospitalisation record	Black	ED visit, PCA
MEURER, 2000 [44]	USA	CSS	307	NS	NS	General population [#]	Black, Hispanic	ED visit
EISNER, 2001 [45]	USA	CS	242	73.0	40.5	General population [#]	Black, Hispanic, Asian	Hospitalisation
KRISHNAN, 2001 [46]	USA	CSS	5062	71.6	44.0	General population [#]	Black	ED visit, hospitalisation
ORTEGA, 2001 [47]	USA	CS	1002	37.0	5.3	General population [#]	Black, Hispanic	ED visit, hospitalisation
ORTEGA, 2001 [48]	USA	CS	897	37.3	NS	General population [#]	Black, Hispanic	ED visit, hospitalisation
AMRE, 2002 [39]	Canada	CS	457	44.1	NS	ED record	Other	ED visit, hospitalisation
DIETTE, 2002 [49]	USA	CS	6590	70.1	NS	General population [#]	Black, other	Hospitalisation
LAFATA, 2002 [50]	USA	CS	452	37.0	8.7	Insurance	Black, other	ED visit, hospitalisation
WEBER, 2002 [32]	USA and Canada	CS	1805	65.3	35	ED record	Black, Hispanic	Hospitalisation
BLOOMBERG, 2003 [33]	USA	CS	8761	37.2	NS	Hospitalisation record	Black, other	Readmission
BOUDREAU, 2003 [34]	USA and Canada	CS	1800	65.2	34.7	ED record	Black, Hispanic	ED visit, hospitalisation
BOUDREAU, 2003 [51]	USA and Canada	CS	1095	40.2	7.8	ED record	Black, Hispanic	Hospitalisation, intubation
SHIELDS, 2004 [52]	USA	CS	5773	40.6	NS	Insurance	Black	ED visit, hospitalisation
CARROLL, 2005 [53]	USA	CS	4315	100	NS	Insurance	Black	ED visit, hospitalisation
GRANT, 2005 [54]	USA	CSS	152	61.8	NS	General population [#]	Black	ED visit, hospitalisation
GRISWOLD, 2005 [55]	USA	CS	3151	63.1	35.2	General population [#]	Black, Hispanic, other	ED visit
ASH, 2006 [56]	USA	CS	10 145	67.4	NS	Hospitalisation record	Black, Hispanic, other	Readmission
MENG, 2006 [57]	USA	CSS	4359	68.2	NS	General population [#]	Black, Hispanic, Asian, other	ED visit
DEWALT, 2007 [58]	USA	CSS	150	NS	7.7	General population [#]	Black	ED visit, hospitalisation
ERICKSON, 2007 [59]	USA	CS	678	71.2	61.1	Hospitalisation record	Black	ED visit, hospitalisation
FORESTER, 2008 [60]	USA	CSS	80	45.0	9	General population [#]	Black, Hispanic	Hospitalisation
HASELKORN, 2008 [61]	USA	CS	2128	71.9	50.3	General population [#]	Black	ED visit
CHANDRA, 2009 [62]	USA	CS	1232	55.7	NS	Hospitalisation record	Black, Hispanic	Hospitalisation
CROCKER, 2009 [63]	USA	CSS	1485	NS	NS	General population [#]	Black, Hispanic	ED visit, hospitalisation
DIETTE, 2009 [64]	USA	CSS	406	42.3	10.2	General population [#]	Black, other	Hospitalisation, PCA
GORMAN, 2009 [65]	USA	CSS	133 509	51.7	45.2	General population [#]	Black, Hispanic, Asian, other	ED visit
HASELKORN, 2009 [66]	USA	CS	563	31.3	NS	General population [#]	other	Exacerbation
KIM, 2009 [67]	USA	CSS	982	36.2	NS	General population [#]	Black, Hispanic	ED visit
WRIGHT, 2009 [68]	USA	CSS	1313	38.0	NS	General population [#]	Black, Hispanic	ED visit
CARROLL, 2010 [69]	USA	CS	306	42.2	8.1	Hospitalisation record	Black, Hispanic	Exacerbation
CANINO, 2012 [70]	USA	CSS	804	43.6	10.6	General population [#]	Hispanic	ED visit
HASEGAWA, 2014 [71]	USA	CS	86 224	NS	NS	Insurance	Black, Hispanic, other	ED visit
KENYON, 2014 [72]	USA	CS	36 601	38.9	NS	Hospitalisation record	Black, Hispanic, other	Readmission
LEE, 2014 [73]	USA	CSS	1323	67.2	74.4	General population [#]	Black, Hispanic, Asian, other	ED visit
AUGER, 2015 [74]	USA	CS	601	NS	5.1	Tertiary care	Black, other	Readmission
VENKAT, 2015 [75]	USA	CS	1785	59.8	NS	Secondary care	Black, Hispanic	ED visit, hospitalisation

Continued

TABLE 1 Continued

First author, year [reference]	Country	Design	Patients	Female, %	Mean age, years	Clinical setting	Exposure	Outcomes measured
WELLS, 2015 [76]	USA	CCS	719	74.1	32.4	Secondary care	Black, Hispanic, other	ED visit
HULL, 2016 [35]	UK	CS	35 864	53.3	NS	Primary care	Black, Asian	Hospitalisation
MITCHELL, 2016 [26]	USA	CS	273	41.4	7.5	General population [#]	Black	Hospitalisation, intubation
FRANKLIN, 2017 [77]	USA	CS	265	42.6	11.5	Hospitalisation record	Black	ED visit, hospitalisation, intubation
HUGHES, 2017 [78]	USA	CSS	33 201	49.7	NS	General population [#]	Black, Hispanic, Asian	ED visit
PARIKH, 2017 [79]	USA	CS	36 906	37.4	5	Tertiary care	Black, Hispanic, other	Readmission
ZHANG, 2017 [80]	USA	CSS	5535	42.7	11.8	General population [#]	Black, Hispanic	ED visit
DESHPANDE, 2018 [24]	USA	CSS	5672	68.3	49.3	General population [#]	Black, Hispanic	ED visit
GRUNWELL, 2018 [81]	USA	CS	579	41.8	NS	Secondary care	Black, other	Hospitalisation, intubation
TRENT, 2018 [82]	USA	CS	913	53.3	NS	Hospitalisation record	Black, Hispanic	ED visit, hospitalisation, intubation
ARATANI, 2020 [83]	USA	CS	47 657	36.0	2.7	Secondary care	Black, Hispanic, Asian, other	Hospitalisation
FITZPATRICK, 2019 [8]	USA	CS	631	59.3	38.2	Secondary care	Black	ED visit, hospitalisation
CREMER, 2020 [84]	USA	CSS	4700	67.3	66.5	General population [#]	Black, Hispanic	ED visit, hospitalisation
URQUHART, 2020 [85]	USA	CSS	3336	41.3	NS	General population [#]	Black, Hispanic	ED visit
ZEIN, 2021 [86]	USA	CS	60 302	62.1	47.5	Secondary care	Black, Asian, other	Exacerbation
BANTA, 2021 [87]	USA	CSS	61 625	49	NS	General population [#]	Hispanic, other	ED visit, exacerbation
KRAFT, 2021 [27]	USA	CS	5701	66	49.5	Hospitalisation record	Black, Asian, other	Exacerbation
SHEIKH, 2021 [30]	USA	CS	345	44.6	6.2	Tertiary care	Black	ED visit
ADEJARE, 2022 [29]	USA	CS	42 375	67.2	49.6	Hospitalisation record	Black	ED visit
BEUTHER, 2022 [31]	USA	CS	1112	70.5	43.9	Tertiary care	Other	Exacerbation
BUSBY, 2022 [37]	UK	CS	3402	63.6	50.0	Tertiary care	Black, Asian, other	ED visit, exacerbation
BUSBY, 2022 [37]	UK	CS	13 936	67.9	55.8	Primary care	Black, Asian, other	ED visit, exacerbation
LUGOGO, 2022 [28]	USA	CS	1884	69	54	Tertiary care	Black, Hispanic, other	ED visit, hospitalisation, exacerbation
REDMOND, 2022 [36]	UK	CS	1140	61.1	50.6	Hospitalisation record	Other	Exacerbation

Data are presented as n, unless otherwise stated. CS: cohort study; NS: not specified; ED: emergency department; PCA: primary care attendance; CSS: cross-sectional study; CCS: case-control study. #: survey/interview.

TABLE 2 Pooled effect of ethnicity on asthma-related healthcare utilisation and morbidity

	All studies			Good-quality studies		
	Studies	OR [#] (95% CI)	I ²	Studies	OR [#] (95% CI)	I ²
Healthcare utilisation						
Primary care attendance	4	0.72 (0.48–1.09)	70.5	3	0.61 (0.44–0.83)	6.9
ED visit	36	1.74 (1.53–1.98)	90.3	21	1.74 (1.56–1.93)	49.8
Hospitalisation	30	1.63 (1.48–1.79)	43.1	15	1.54 (1.35–1.77)	29.9
Hospital readmission	6	1.19 (0.90–1.57)	78.0	5	1.12 (0.84–1.51)	79.3
Ventilation/intubation	5	2.67 (1.65–4.31)	74.2	NS		
Exacerbations	7	1.10 (0.94–1.28)	78.8	5	1.06 (0.91–1.23)	78.6

Data are presented as n, unless otherwise stated. ED: emergency department; NS: not specified. #: ethnic minority groups versus White patients.

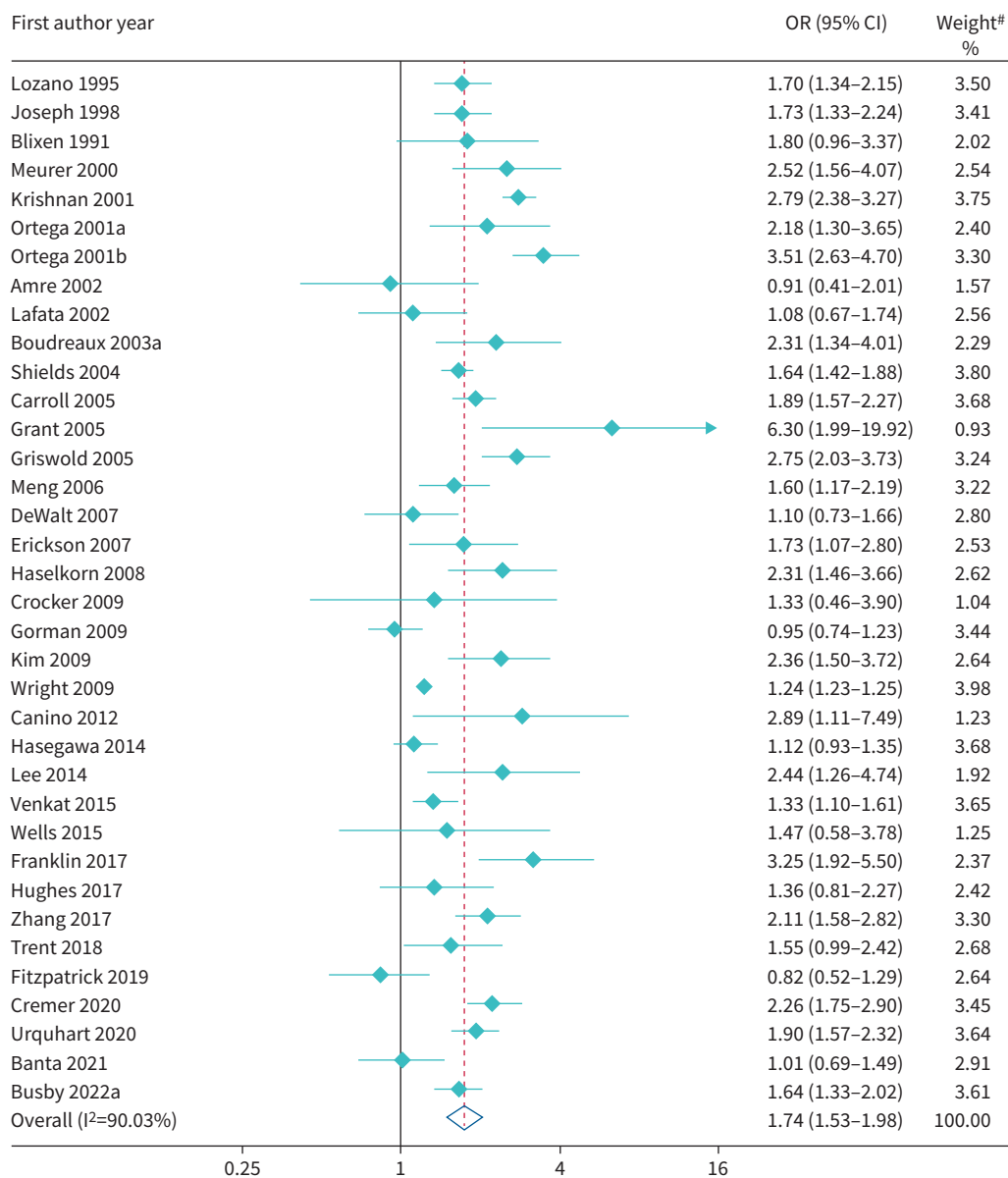


FIGURE 2 Forest plot of odds ratio of asthma-related emergency department visits. #: weights are from random-effects model.

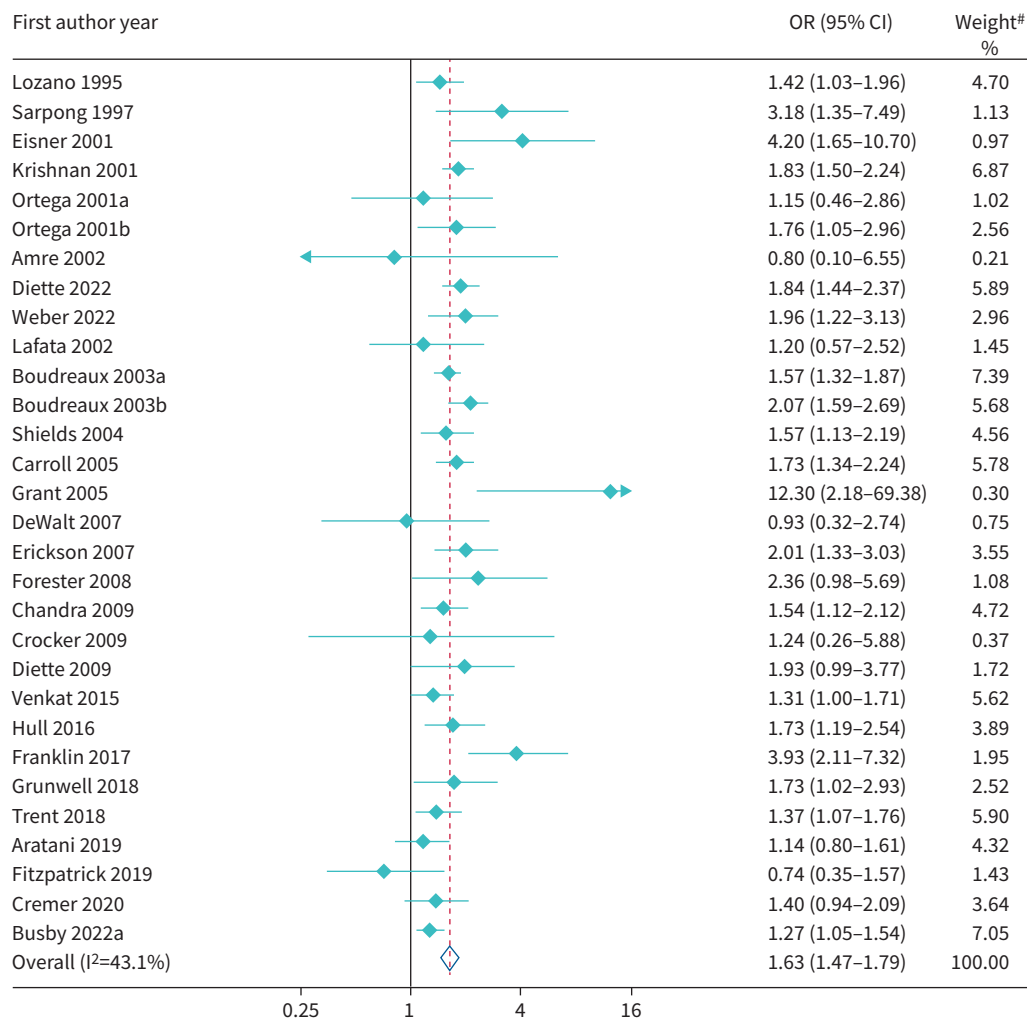


FIGURE 3 Forest plot of odds ratio of asthma-related hospitalisation. #: weights are from random-effects model.

95% CI 1.35–1.71) patients (p=0.001), while Asian (OR 0.97, 95% CI 0.59–1.61) and those from other ethnicities (OR 1.13, 95% CI 0.86–1.48) had similar rates to White patients. Black patients also had higher rates of hospitalisation (OR 1.69, 95% CI 1.40–2.06) than Hispanic patients (OR 1.33, 95% CI 1.09–1.62), Asian patients (1.42, 95% CI 0.85–2.38) or those from other ethnicities (OR 1.23, 95% CI 0.88–1.72) (p=0.068), and higher rates of readmission (OR 1.76, 95% CI 1.61–1.91) than those from other ethnicities (OR 1.05, 95% CI 0.97–1.13) (p<0.001). There was little evidence of any difference in disparities by age (ED visits and hospitalisations) or time period (ED visits) (supplementary table S7). Data were not available to allow robust subgroup analyses for other outcomes, and no subgroup analyses comparing healthcare system funding models were possible.

Discussion

In this systematic review, comprising 65 studies and 699 882 asthma patients, we found that patients from EMGs had higher secondary healthcare utilisation, evidence to suggest increased rates of exacerbation, and, when restricting to good-quality studies, reduced primary care attendance when compared to White patients. Black and Hispanic patients had particularly high rates of secondary healthcare utilisation, while rates among those from Asian and other ethnicities were relatively similar to White patients. Despite the global importance of this issue, the vast majority of relevant research was conducted in the USA, and most eligible studies were published ≥10 years ago.

Our findings are consistent with other systematic reviews in asthma [13, 14], which have reported poorer healthcare outcomes among EMGs. Importantly, these reviews were limited to only UK-based studies (published >15 years ago) [13], or paediatric patients [14], while the current review provides an update of

this evidence and includes all relevant studies worldwide regardless of patient demographics. The findings in this review are consistent with findings of ethnic disparities across a broad array of diseases and outcomes [88–91]. Compared to White patients, Black patients had greater COPD severity [88, 89] and were more likely to be admitted to hospital for respiratory causes [89]. Additionally, increased hospitalisation and mortality have been observed among EMGs in coronary heart disease, congestive heart failure and cerebrovascular disease [90, 91].

Minority ethnicity has been related to increased obesity and comorbidities, which are known correlates of asthma morbidity [92], and is strongly associated with lower socioeconomic status in many countries [7]. Evidence from the Severe Asthma Research Program in the USA has found that socioeconomic factors are a strong mediator of ethnic disparities in asthma ED attendance [8]. This could be particularly relevant for the results of our review, as the studies included were overwhelmingly based in the USA, where issues relating to variable healthcare insurance and poverty are common among EMGs, and in particular Black and Hispanic patients [93, 94]. We did not find any evidence of higher rates of ED attendance among Asian patients, who have a more similar socioeconomic status to the White population within the USA [94].

EMGs, particularly those with limited English proficiency living in countries where this is the primary language [95], and limited reading ability [10], are known to have lower health literacy [11]. This is important, as poor health literacy has been associated with incorrect metered-dose inhaler technique [10], increased likelihood of inpatient visits [95, 96], emergency care [96] and worse asthma control [95]. EMGs express greater concern regarding preventive asthma medications [97] and are known to have poorer adherence to their maintenance asthma medications, which has been consistently associated with poorer outcomes in several studies [12]. Inadequate living conditions among EMGs may also contribute to the development and severity of asthma symptoms, and reduced asthma control, possibly due to increased allergen exposure [14].

When restricting to good-quality studies we found evidence of lower primary care attendances, but higher secondary healthcare utilisation among the EMGs, which may reflect differences in healthcare-seeking behaviour [13, 98]. The decision to seek primary or secondary care interventions are influenced by various factors, including those related to socioeconomic circumstances and specialist accessibility [99]. One USA-based study reported significantly fewer primary care attendances among African Americans when compared to Whites even within the same insurance scheme, suggesting that cultural factors and personal beliefs may also be important contributory factors [43]. Substantial evidence has shown that African American patients are more reliant on ED services for asthma and other conditions [100, 101]. Similarly, studies have demonstrated poor awareness of the need for preventative care among Black men, who often wait until symptoms appear to seek treatment, and sometimes prioritise treatment for their family rather than themselves [102].

There is some evidence that EMGs have poorer satisfaction with their healthcare providers and have been reported to receive poorer care with lower levels of adherence to guidelines and a greater propensity to underestimate asthma severity than their White counterparts [103–105]. Children from minority backgrounds are less likely to have their asthma treatment escalated and use more oral corticosteroid at all treatment steps [106–108]. In addition, racism and mistrust of healthcare providers have been shown to result in fewer visits to primary healthcare centres and an increased tendency to attend the ED, which could have contributed to our results [102]. It should be noted that many of the other potential drivers of poorer outcomes among EMGs cited previously, including lower socioeconomic status and poorer housing conditions, may also be driven by racism or structural inequality as a root cause [7].

Given the myriad factors that are potentially driving ethnic disparities, solutions are unlikely to be straightforward. Evidence suggests that culturally sensitive and tailored interventions are required to mitigate asthma ethnic disparities [109]. A recently updated Cochrane review demonstrated the benefits of culturally specific asthma education programmes in reducing severe asthma exacerbations in minority children, compared to generic programmes or usual care [109]. A citywide asthma management programme directed towards poor, minority, urban children in the USA found that adherence to anti-inflammatory guidelines by primary care providers reduced asthma-related hospitalisations, ED visits and outpatient visits [110]. Interventions to improve medication adherence and health literacy are typically cited as potential techniques to reduce health inequalities; however, more work is needed to evaluate their cost-effectiveness and explore their impact on healthcare outcomes [111, 112]. A recent review of patient and family-led interventions aiming to improve inhaled corticosteroid adherence among Black/African Americans reported that no randomised controlled trials have found a statistically significant improvement in adherence [113].

This review is novel, as it is the first to systematically report on the association of ethnicity on various aspects of asthma healthcare outcomes and it was not restricted to specific countries or patient demographics. Our results provide an at-a-glance summary of all relevant studies and our exploration of heterogeneity highlights specific subgroups where disparities are largest and action is urgently needed to standardise care.

Several of the studies included in our primary analysis were of poor quality and there were high levels of heterogeneity for several outcomes, which could be related to differences in outcome classification, exposure definition, methodology (*e.g.* type of effect estimate) or study definition, and may hinder the interpretability of our results. However, this was largely reduced when restricted to good-quality studies and our overall conclusions of increased secondary healthcare utilisation and exacerbations among EMGs were unaltered. Although we used subgroup analyses to explore heterogeneity, this was limited by the analyses that were reported in the primary studies. Data on important subgroups, for example sex-specific estimates, were generally not available. We restricted our review to studies that used White patients as their reference group, which may have biased our analysis to Northern American and European countries.

Our primary analysis presented all EMGs combined; however, this is unlikely to be valid. Although we presented separate estimates for Black, Hispanic and Asian patients, important differences are likely to exist even within these groups. For example, Mexican Americans have markedly lower asthma morbidity than Puerto Ricans [4]. The majority of the studies included in this review were based in the USA, which may limit the generalisability of our results. We believe that this is an important finding in itself and may suggest a lack of research into the magnitude and drivers of ethnic disparities in asthma outcomes within many countries. Despite our finding of a broad literature on ethnic disparities among adults living in the USA, this evidence had not previously been considered within a systematic review prior to the present study. Consequently, our results provide new and important evidence for practitioners in that region. Surprisingly, no studies have explored ethnic differences in mortality using individual patient data and this is an important area for future research. Lastly, our study did not include data on intermediate outcomes such as asthma control.

Conclusion

In summary, EMGs with asthma had substantially higher rates of secondary healthcare utilisation and exacerbations with evidence suggestive of lower primary care attendances. Despite the global importance of this issue, the vast majority of relevant studies were from the USA and it remains largely unclear whether these disparities are replicated in other countries with different populations and healthcare funding models. Further research into the causes of these disparities, including whether these vary by specific ethnicity, is required to aid the design of effective interventions. To understand the mechanisms behind these disparities it is likely that innovative ways of combining qualitative and quantitative studies and of examining mediation effects will need to be pursued or developed further [114–116].

Provenance: Submitted article, peer reviewed.

This study is registered at www.crd.york.ac.uk/prospero with identifier number CRD42020200392.

Author contributions: A. Akin-Imran (guarantor) conducted the search, screened the articles, performed data curation, analysed data and wrote and edited the original draft. J. Busby, L.G. Heaney and C. Redmond were instrumental in designing and developing the search strategy. A. Bajpai and D. McCartan both screened and extracted data from articles. J. Busby conceived the idea for the review, supervised the work and assisted with data analysis, and drafting and editing the original and subsequent drafts. F. Kee monitored the progress of work, and revised and edited the draft paper. L.G. Heaney, A. Bajpai, D. McCartan and C. Redmond edited the draft paper.

Support statement: A. Akin-Imran is supported by Health Data Research UK (grant number JHR1157-100/1230). A. Bajpai was on a studentship placement programme at the Centre for Public Health, Queen's University Belfast. C. Redmond is in receipt of a PhD stipend alongside the payment of university fees, from the Department for the Economy, Northern Ireland. Funding information for this article has been deposited with the Crossref Funder Registry.

Conflict of interest: L.G. Heaney reports grant funding from Medimmune, Novartis UK, Roche/Genentech Inc., GlaxoSmithKline, Amgen, Genentech/Hoffman la Roche, AstraZeneca, Aerocrine and Vitalograph, and has given lectures supported by Novartis, Hoffman la Roche/Genentech Inc., Sanofi, GlaxoSmithKline, AstraZeneca, Teva and Circassia; and reports support for attending meetings from AstraZeneca, Boehringer Ingelheim, Chiesi, Glaxo Smith

Kline and Napp Pharmaceuticals. L.G. Heaney has taken part in advisory boards supported by Novartis, Hoffman la Roche/Genentech Inc., Sanofi, Evelo Biosciences, GlaxoSmithKline, AstraZeneca, Teva, Theravance and Circassia. The rest of the authors declare that they have no relevant conflicts of interest.

References

- 1 James SL, Abate D, Abate KH, *et al.* Global, regional, and national incidence, prevalence, and years lived with disability for 354 diseases and injuries for 195 countries and territories, 1990–2017: a systematic analysis for the Global Burden of Disease Study 2017. *Lancet* 2018; 392: 1789–1858.
- 2 Wang E, Wechsler ME, Tran TN, *et al.* Characterization of severe asthma worldwide: data from the International Severe Asthma Registry. *Chest* 2020; 157: 790–804.
- 3 Asthma and Allergy Foundation of America. Asthma Disparities in America: a Roadmap to Reducing Burden on Racial and Ethnic Minorities. 2020. <https://aafa.org/wp-content/uploads/2022/08/asthma-disparities-in-america-burden-on-racial-ethnic-minorities.pdf>.
- 4 Moorman JE, Akinbami LJ, Bailey CM, *et al.* National surveillance of asthma: United States, 2001–2010. *Vital Health Stat* 2012; 3: 1–58.
- 5 Hill TD, Graham LM, Divgi V. Racial disparities in pediatric asthma: a review of the literature. *Curr Allergy Asthma Rep* 2011; 11: 85–90.
- 6 Miles C, Arden-Close E, Thomas M, *et al.* Barriers and facilitators of effective self-management in asthma: systematic review and thematic synthesis of patient and healthcare professional views. *NPJ Prim Care Respir Med* 2017; 27: 57.
- 7 Williams DR, Priest N, Anderson NB. Understanding associations among race, socioeconomic status, and health: patterns and prospects. *Health Psychol* 2016; 35: 407–411.
- 8 Fitzpatrick AM, Gillespie SE, Mauger DT, *et al.* Racial disparities in asthma-related health care use in the National Heart, Lung, and Blood Institute’s Severe Asthma Research Program. *J Allergy Clin Immunol* 2019; 143: 2052–2061.
- 9 Lakhampaul M, Bird D, Manikam L, *et al.* A systematic review of explanatory factors of barriers and facilitators to improving asthma management in South Asian children. *BMC Public Health* 2014; 14: 403.
- 10 Williams MV, Baker DW, Honig EG, *et al.* Inadequate literacy is a barrier to asthma knowledge and self-care. *Chest* 1998; 114: 1008–1015.
- 11 Apter AJ, Wan F, Reisine S, *et al.* The association of health literacy with adherence and outcomes in moderate-severe asthma. *J Allergy Clin Immunol* 2013; 132: 321–327.
- 12 Engelkes M, Janssens HM, de Jongste JC, *et al.* Medication adherence and the risk of severe asthma exacerbations: a systematic review. *Eur Respir J* 2015; 45: 396–407.
- 13 Netuveli G, Hurwitz B, Levy M, *et al.* Ethnic variations in UK asthma frequency, morbidity, and health-service use: a systematic review and meta-analysis. *Lancet* 2005; 365: 312–317.
- 14 Ardura-Garcia C, Stolbrink M, Zaidi S, *et al.* Predictors of repeated acute hospital attendance for asthma in children: a systematic review and meta-analysis. *Pediatr Pulmonol* 2018; 53: 1179–1192.
- 15 Page MJ, McKenzie JE, Bossuyt PM, *et al.* The PRISMA 2020 statement: an updated guideline for reporting systematic reviews. *BMJ* 2021; 372: n71.
- 16 Subramanian SV, Jones K, Kaddour A, *et al.* Revisiting Robinson: the perils of individualistic and ecologic fallacy. *Int J Epidemiol* 2009; 38: 342–360.
- 17 Dobrescu AI, Nussbaumer-Streit B, Klerings I, *et al.* Restricting evidence syntheses of interventions to English-language publications is a viable methodological shortcut for most medical topics: a systematic review. *J Clin Epidemiol* 2021; 137: 209–217.
- 18 Higgins JPT, Li T, Deeks JJ. Chapter 6: Choosing effect measures and computing estimates of effect. In: Higgins JPT, Thomas J, Chandler J, *et al.*, eds. *Cochrane Handbook for Systematic Reviews of Interventions*, version 6.1 (updated September 2020). 2020. <https://training.cochrane.org/handbook/current/chapter-06>. Date last accessed: 19 May 2021.
- 19 Wells GA, Shea B, O’Connell D, *et al.* The Newcastle-Ottawa Scale (NOS) for Assessing the Quality of Nonrandomised Studies in Meta-Analyses. www.ohri.ca/programs/clinical_epidemiology/oxford.asp. Date last accessed: 12 March 2018.
- 20 Modesti PA, Reboldi G, Cappuccio FP, *et al.* Panethnic differences in blood pressure in Europe: a systematic review and meta-analysis. *PLoS One* 2016; 11: e0147601.
- 21 DerSimonian R, Laird N. Meta-analysis in clinical trials. *Control Clin Trials* 1986; 7: 177–188.
- 22 Fu R, Gartlehner G, Grant M, *et al.* Conducting quantitative synthesis when comparing medical interventions: AHRQ and the Effective Health Care Program. *Methods Guide for Effectiveness and Comparative Effectiveness Reviews* 2010; 64: 1187–1197.
- 23 Sterne JAC, Sutton AJ, Ioannidis JPA, *et al.* Recommendations for examining and interpreting funnel plot asymmetry in meta-analyses of randomised controlled trials. *BMJ* 2011; 343: d4002.
- 24 Deshpande M, Look KA. Exploring factors associated with asthma-related emergency department visits among adults: a path analysis approach. *Res Soc Adm Pharm* 2018; 14: 46–52.

- 25 Zoratti EM, Havstad S, Rodriguez J, *et al.* Health service use by African Americans and Caucasians with asthma in a managed care setting. *Am J Respir Crit Care Med* 1998; 158: 371–377.
- 26 Mitchell SJ, Bilderback AL, Okelo SO. Racial disparities in asthma morbidity among pediatric patients seeking asthma specialist care. *Acad Pediatr* 2016; 16: 64–67.
- 27 Kraft M, Brusselle G, FitzGerald JM, *et al.* Patient characteristics, biomarkers and exacerbation risk in severe, uncontrolled asthma. *Eur Respir J* 2021; 58: 2100413.
- 28 Lugogo N, Judson E, Haight E, *et al.* Severe asthma exacerbation rates are increased among female, Black, Hispanic, and younger adult patients: results from the US CHRONICLE study. *J Asthma* 2022; 59: 2495–2508.
- 29 Adejare AA, Gautam Y, Madzia J, *et al.* Unraveling racial disparities in asthma emergency department visits using electronic healthcare records and machine learning. *J Asthma* 2022; 59: 79–93.
- 30 Sheikh SI, Ryan-Wenger NA, Pitts J, *et al.* Impact of guideline adherence and race on asthma control in children. *World J Pediatr* 2021; 17: 500–507.
- 31 Beuther DA, Murphy KR, Zeiger RS, *et al.* Asthma Impairment and Risk Questionnaire (AIRQ) control level predicts future risk of asthma exacerbations. *J Allergy Clin Immunol Pract* 2022; 10: 3204–3212.
- 32 Weber EJ, Silverman RA, Callahan ML, *et al.* A prospective multicenter study of factors associated with hospital admission among adults with acute asthma. *Am J Med* 2002; 113: 371–378.
- 33 Bloomberg GR, Trinkaus KM, Fisher EB, *et al.* Hospital readmissions for childhood asthma: a 10-year metropolitan study. *Am J Respir Crit Care Med* 2003; 167: 1068–1076.
- 34 Boudreaux ED, Emond SD, Clark S, *et al.* Acute asthma among adults presenting to the emergency department: the role of race/ethnicity and socioeconomic status. *Chest* 2003; 124: 803–812.
- 35 Hull SA, McKibben S, Homer K, *et al.* Asthma prescribing, ethnicity and risk of hospital admission: an analysis of 35,864 linked primary and secondary care records in East London. *NPJ Prim Care Respir Med* 2016; 26: 16049.
- 36 Redmond C, Heaney LG, Chaudhuri R, *et al.* Benefits of specialist severe asthma management: demographic and geographic disparities. *Eur Respir J* 2022; 60: 2200660.
- 37 Busby J, Heaney LG, Brown T, *et al.* Ethnic differences in severe asthma clinical care and outcomes: an analysis of United Kingdom primary and specialist care. *J Allergy Clin Immunol Pract* 2022; 10: 495–505.
- 38 Mitchell EA, Quested C. Why are Polynesian children admitted to hospital for asthma more frequently than European children? *NZ Med J* 1988; 101: 446–448.
- 39 Amre D, Infante-Rivard C, Gautrin D, *et al.* Socioeconomic status and utilization of health care services among asthmatic children. *J Asthma* 2002; 39: 625–631.
- 40 Lozano P, Connell FA, Koepsell TD. Use of health services by African-American children with asthma on Medicaid. *JAMA* 1995; 274: 469–473.
- 41 Sarpong SB, Karrison T. Sensitization to indoor allergens and the risk for asthma hospitalization in children. *Ann Allergy Asthma Immunol* 1997; 79: 455–459.
- 42 Joseph CLM, Havstad SL, Ownby DR, *et al.* Racial differences in emergency department use persist despite allergist visits and prescriptions filled for antiinflammatory medications. *J Allergy Clin Immunol* 1998; 101: 484–490.
- 43 Blixen CE, Havstad S, Tilley BC, *et al.* A comparison of asthma-related healthcare use between African-Americans and Caucasians belonging to a health maintenance organization (HMO). *J Asthma* 1999; 36: 195–204.
- 44 Meurer JR, George V, Subichin SJ, *et al.* Risk factors for pediatric asthma emergency visits. Milwaukee Childhood Asthma Project Team. *J Asthma* 2000; 37: 653–659.
- 45 Eisner MD, Katz PP, Yelin EH, *et al.* Risk factors for hospitalization among adults with asthma: the influence of sociodemographic factors and asthma severity. *Respir Res* 2001; 2: 53–60.
- 46 Krishnan JA, Diette GB, Skinner EA, *et al.* Race and sex differences in consistency of care with National Asthma Guidelines in managed care organizations. *Arch Intern Med* 2001; 161: 1660–1668.
- 47 Ortega AN, Belanger KD, Paltiel AD, *et al.* Use of health services by insurance status among children with asthma. *Med Care* 2001; 39: 1065–1074.
- 48 Ortega AN, Belanger KD, Bracken MB, *et al.* A childhood asthma severity scale: symptoms, medications, and health care visits. *Ann Allergy Asthma Immunol* 2001; 86: 405–413.
- 49 Diette GB, Krishnan JA, Dominici F, *et al.* Asthma in older patients: factors associated with hospitalization. *Arch Intern Med* 2002; 162: 1123–1132.
- 50 Lafata JE, Xi H, Divine G. Risk factors for emergency department use among children with asthma using primary care in a managed care environment. *Ambul Pediatr* 2002; 2: 268–275.
- 51 Boudreaux ED, Emond SD, Clark S, *et al.* Race/ethnicity and asthma among children presenting to the emergency: differences in disease severity and management. *Pediatrics* 2003; 111: e615–e621.
- 52 Shields AE, Comstock C, Weiss KB. Variations in asthma care by race/ethnicity among children enrolled in a state Medicaid program. *Pediatrics* 2004; 113: 496–504.
- 53 Carroll KN, Griffin MR, Gebretsadik T, *et al.* Racial differences in asthma morbidity during pregnancy. *Obstet Gynecol* 2005; 106: 66–72.

- 54 Grant EN, Malone A, Lyttle CS, *et al.* Asthma morbidity and treatment in the Chicago metropolitan area: one decade after national guidelines. *Ann Allergy Asthma Immunol* 2005; 95: 19–25.
- 55 Griswold SK, Nordstrom CR, Clark S, *et al.* Asthma exacerbations in North American adults: who are the “frequent fliers” in the emergency department? *Chest* 2005; 127: 1579–1586.
- 56 Ash M, Brandt S. Disparities in asthma hospitalization in Massachusetts. *Am J Public Health* 2006; 96: 358–362.
- 57 Meng YY, Babey SH, Brown ER, *et al.* Emergency department visits for asthma: the role of frequent symptoms and delay in care. *Ann Allergy Asthma Immunol* 2006; 96: 291–297.
- 58 DeWalt DA, Dilling MH, Rosenthal MS, *et al.* Low parental literacy is associated with worse asthma care measures in children. *Ambul Pediatr* 2007; 7: 25–31.
- 59 Erickson SE, Iribarren C, Tolstykh IV, *et al.* Effect of race on asthma management and outcomes in a large, integrated managed care organization. *Arch Intern Med* 2007; 167: 1846–1852.
- 60 Forester JP, Ong BA, Fallot A. Can equal access to care eliminate racial disparities in pediatric asthma outcomes? *J Asthma* 2008; 45: 211–214.
- 61 Haselkorn T, Lee JH, Mink DR, *et al.* Racial disparities in asthma-related health outcomes in severe or difficult-to-treat asthma. *Ann Allergy Asthma Immunol* 2008; 101: 256–263.
- 62 Chandra D, Clark S, Camargo CA. Race/ethnicity differences in the inpatient management of acute asthma in the United States. *Chest* 2009; 135: 1527–1534.
- 63 Crocker D, Brown C, Moolenaar R, *et al.* Racial and ethnic disparities in asthma medication usage and health-care utilization: data from the National Asthma Survey. *Chest* 2009; 136: 1063–1071.
- 64 Diette GB, Sajjan S, Skinner EA, *et al.* Using the pediatric asthma therapy assessment questionnaire to measure asthma control and healthcare utilization in children. *Patient* 2009; 2: 233–241.
- 65 Gorman BK, Chu M. Racial and ethnic differences in adult asthma prevalence, problems, and medical care. *Ethn Health* 2009; 14: 527–552.
- 66 Haselkorn T, Zeiger RS, Chipps BE, *et al.* Recent asthma exacerbations predict future exacerbations in children with severe or difficult-to-treat asthma. *J Allergy Clin Immunol* 2009; 124: 921–927.
- 67 Kim H, Kieckhefer GM, Greek AA, *et al.* Health care utilization by children with asthma. *Prev Chronic Dis* 2009; 6: A12.
- 68 Wright K. Disparities and predictors of emergency department use among California’s African American, Latino, and White children, aged 1–11 years, with asthma. *Ethn Dis* 2009; 19: 71–77.
- 69 Carroll CL, Uygungil B, Zucker AR, *et al.* Identifying an at-risk population of children with recurrent near-fatal asthma exacerbations. *J Asthma* 2010; 47: 460–464.
- 70 Canino G, Garro A, Alvarez MM, *et al.* Factors associated with disparities in emergency department use among Latino children with asthma. *Ann Allergy Asthma Immunol* 2012; 108: 266–270.
- 71 Hasegawa K, Tsugawa Y, Brown DFM, *et al.* A population-based study of adults who frequently visit the emergency department for acute asthma: California and Florida, 2009–2010. *Ann Am Thorac Soc* 2014; 11: 158–166.
- 72 Kenyon CC, Melvin PR, Chiang VW, *et al.* Rehospitalization for childhood asthma: timing, variation, and opportunities for intervention. *J Pediatr* 2014; 164: 300–305.
- 73 Lee JA, Reed PL, Berg JP. Asthma characteristics among older adults: using the California Health Interview Survey to examine asthma incidence, morbidity and ethnic differences. *J Asthma* 2014; 51: 399–404.
- 74 Auger KA, Kahn RS, Davis MM, *et al.* Pediatric asthma readmission: asthma knowledge is not enough? *J Pediatr* 2015; 166: 101–108.
- 75 Venkat A, Hasegawa K, Basior JM, *et al.* Race/ethnicity and asthma management among adults presenting to the emergency department. *Respirology* 2015; 20: 994–997.
- 76 Wells RE, Garb J, Fitzgerald J, *et al.* Factors associated with emergency department visits in asthma exacerbation. *South Med J* 2015; 108: 276–280.
- 77 Franklin JM, Grunwell JR, Bruce AC, *et al.* Predictors of emergency department use in children with persistent asthma in metropolitan Atlanta, Georgia. *Ann Allergy Asthma Immunol* 2017; 119: 129–136.
- 78 Hughes HK, Matsui EC, Tschudy MM, *et al.* Pediatric asthma health disparities: race, hardship, housing, and asthma in a national survey. *Acad Pediatr* 2017; 17: 127–134.
- 79 Parikh K, Berry J, Hall M, *et al.* Racial and ethnic differences in pediatric readmissions for common chronic conditions. *J Pediatr* 2017; 186: 158–164.
- 80 Zhang Q, Lamichhane R, Diggs LA. Disparities in emergency department visits in American children with asthma: 2006–2010. *J Asthma* 2017; 54: 679–686.
- 81 Grunwell JR, Travers C, Fitzpatrick AM. Inflammatory and comorbid features of children admitted to a PICU for status asthmaticus. *Pediatr Crit Care Med* 2018; 19: e585–e594.
- 82 Trent SA, Hasegawa K, Ramratnam SK, *et al.* Variation in asthma care at hospital discharge by race/ethnicity groups. *J Asthma* 2018; 55: 939–948.
- 83 Aratani Y, Nguyen HA, Sharma V. Asthma-related emergency department visits among low-income families with young children by race/ethnicity and primary language. *Pediatr Emerg Care* 2020; 36: e636–e640.

- 84 Cremer NM, Baptist AP. Race and asthma outcomes in older adults: results from the national asthma survey. *J Allergy Clin Immunol Pract* 2020; 8: 1294–1301.
- 85 Urquhart A, Clarke P. US racial/ethnic disparities in childhood asthma emergent health care use: National Health Interview Survey, 2013–2015. *J Asthma* 2020; 57: 510–520.
- 86 Zein JG, Wu CP, Attaway AH, et al. Novel machine learning can predict acute asthma exacerbation. *Chest* 2021; 159: 1747–1757.
- 87 Banta JE, Ramadan M, Alhuseini N, et al. Socio-demographics and asthma prevalence, management, and outcomes among children 1–11 years of age in California. *Glob Health Res Policy* 2021; 6: 17.
- 88 Eisner MD, Blanc PD, Omachi TA, et al. Socioeconomic status, race and COPD health outcomes. *J Epidemiol Community Health* 2011; 65: 26–34.
- 89 Martin A, Badrick E, Mathur R, et al. Effect of ethnicity on the prevalence, severity, and management of COPD in general practice. *Br J Gen Pract* 2012; 62: e76–e81.
- 90 Mozaffarian D, Benjamin EJ, Go AS, et al. Heart Disease and Stroke Statistics – 2015 update: a report from the American Heart Association. *Circulation* 2015; 131: e29–e332.
- 91 Mensah GA, Mokdad AH, Ford ES, et al. State of disparities in cardiovascular health in the United States. *Circulation* 2005; 111: 1233–1241.
- 92 Forno E, Celedón JC. Asthma and ethnic minorities: socioeconomic status and beyond. *Current Opin Allergy Clin Immunol* 2009; 9: 154–160.
- 93 Dickman SL, Himmelstein DU, Woolhandler S. Inequality and the health-care system in the USA. *Lancet* 2017; 389: 1431–1441.
- 94 Bailey ZD, Krieger N, Agénor M, et al. Structural racism and health inequities in the USA: evidence and interventions. *Lancet* 2017; 389: 1453–1463.
- 95 Wisnivesky JP, Krauskopf K, Wolf MS, et al. The association between language proficiency and outcomes of elderly patients with asthma. *Ann Allergy Asthma Immunol* 2012; 109: 179–184.
- 96 Berkman ND, Sheridan SL, Donahue KE, et al. Low health literacy and health outcomes: an updated systematic review. *Ann Intern Med* 2011; 155: 97–107.
- 97 Conn KM, Halterman JS, Lynch K, et al. The impact of parents' medication beliefs on asthma management. *Pediatrics* 2007; 120: e521–e526.
- 98 Adamson J, Ben-Shlomo Y, Chaturvedi N, et al. Ethnicity, socio-economic position and gender – do they affect reported health-care seeking behaviour? *Soc Sci Med* 2003; 57: 895–904.
- 99 Flores G, Snowden-Bridon C, Torres S, et al. Urban minority children with asthma: substantial morbidity, compromised quality and access to specialists, and the importance of poverty and specialty care. *J Asthma* 2009; 46: 392–398.
- 100 Wagner F, Steefel L. Beliefs regarding asthma management relating to Asthma Action Plans (AAPs) of African American caregivers residing in Newark, New Jersey public housing communities. *J Pediatr Nurs* 2017; 36: 92–97.
- 101 Brown LE, Burton R, Hixon B, et al. Factors influencing emergency department preference for access to healthcare. *West J Emerg Med* 2012; 13: 410–415.
- 102 Cheatham CT, Barksdale DJ, Rodgers SG. Barriers to health care and health-seeking behaviors faced by Black men. *J Am Acad Nurse Pract* 2008; 20: 555–562.
- 103 Davidson E, Liu JJ, Sheikh A. The impact of ethnicity on asthma care. *Primary Care Respir J* 2010; 19: 202–208.
- 104 Chauhan A, Walton M, Manias E, et al. The safety of health care for ethnic minority patients: a systematic review. *Int J Equity Health* 2020; 19: 118.
- 105 Hunt KA, Gaba A, Lavizzo-Mourey R. Racial and ethnic disparities and perceptions of health care: does health plan type matter? *Health Serv Res* 2005; 40: 551–576.
- 106 Lucas JA, Marino M, Fankhauser K, et al. Oral corticosteroid use, obesity, and ethnicity in children with asthma. *J Asthma* 2020; 57: 1288–1297.
- 107 Kuehni CE, Strippoli MPF, Low N, et al. Wheeze and asthma prevalence and related health-service use in white and south Asian pre-schoolchildren in the United Kingdom. *Clin Exp Allergy* 2007; 37: 1738–1746.
- 108 Simpson CR, Sheikh A. Understanding the reasons for poor asthma outcomes in ethnic minorities: welcome progress, but important questions remain. *Clin Exp Allergy* 2007; 37: 1730–1732.
- 109 McCallum GB, Morris PS, Brown N, et al. Culture-specific programs for children and adults from minority groups who have asthma. *Cochrane Database Syst Rev* 2017; 8: CD006580.
- 110 Cloutier MM, Hall CB, Wakefield DB, et al. Use of asthma guidelines by primary care providers to reduce hospitalizations and emergency department visits in poor, minority, urban children. *J Pediatr* 2005; 146: 591–597.
- 111 Dima AL, Hernandez G, Cunillera O, et al. Asthma inhaler adherence determinants in adults: systematic review of observational data. *Eur Respir J* 2015; 45: 994–1018.
- 112 Walters R, Leslie SJ, Polson R, et al. Establishing the efficacy of interventions to improve health literacy and health behaviours: a systematic review. *BMC Public Health* 2020; 20: 1040.

- 113 Riley IL, Murphy B, Razouki Z, *et al.* A systematic review of patient- and family-level inhaled corticosteroid adherence interventions in Black/African Americans. *J Allergy Clin Immunol Pract* 2019; 7: 1184–1193.
- 114 Cashin AG, Lee H, Lamb SE, *et al.* An overview of systematic reviews found suboptimal reporting and methodological limitations of mediation studies investigating causal mechanisms. *J Clin Epidemiol* 2019; 111: 60–68.
- 115 Cerigo H, Quesnel-Vallée A. Systematic mixed studies reviews: leveraging the literature to answer complex questions through the integration of quantitative and qualitative evidence. *Int J Public Health* 2020; 65: 699–703.
- 116 Hong QN, Pluye P. A conceptual framework for critical appraisal in systematic mixed studies reviews. *J Mix Methods Res* 2019; 13: 446–460.