

## Central Lancashire Online Knowledge (CLoK)

Title	Late Pleistocene Neanderthal exploitation of stable and mosaic ecosystems in northern Iberia shown by multi-isotope evidence
Type	Article
URL	<a href="https://clock.uclan.ac.uk/46978/">https://clock.uclan.ac.uk/46978/</a>
DOI	##doi##
Date	2023
Citation	Pederzani, Sarah, Britton, Kate, Jones, Jennifer Rose orcid iconORCID: 0000-0002-9247-7994, Lucía, Agudo Pérez, Geiling, Jeanne Marie and Marín-Arroyo, Ana B. (2023) Late Pleistocene Neanderthal exploitation of stable and mosaic ecosystems in northern Iberia shown by multi-isotope evidence. <i>Quaternary Research</i> . ISSN 0033-5894
Creators	Pederzani, Sarah, Britton, Kate, Jones, Jennifer Rose, Lucía, Agudo Pérez, Geiling, Jeanne Marie and Marín-Arroyo, Ana B.


It is advisable to refer to the publisher's version if you intend to cite from the work. ##doi##

For information about Research at UCLan please go to <http://www.uclan.ac.uk/research/>

All outputs in CLoK are protected by Intellectual Property Rights law, including Copyright law. Copyright, IPR and Moral Rights for the works on this site are retained by the individual authors and/or other copyright owners. Terms and conditions for use of this material are defined in the <http://clock.uclan.ac.uk/policies/>

## Research Article

# Late Pleistocene Neanderthal exploitation of stable and mosaic ecosystems in northern Iberia shown by multi-isotope evidence

Sarah Pederzani<sup>a,b,c\*</sup> , Kate Britton<sup>a,b</sup>, Jennifer Rose Jones<sup>d,e</sup>, Lucía Agudo Pérez<sup>d</sup>, Jeanne Marie Geiling<sup>d</sup> and Ana B. Marín-Arroyo<sup>d\*</sup>

<sup>a</sup>Department of Human Evolution, Max-Planck-Institute for Evolutionary Anthropology, 04103 Leipzig, Germany; <sup>b</sup>Department of Archaeology, University of Aberdeen, Aberdeen AB24 3UF, United Kingdom; <sup>c</sup>Archaeological Micromorphology and Biomarkers Laboratory (AMBI Lab), Instituto Universitario de Bio-Orgánica “Antonio González”, Universidad de La Laguna, 38206 San Cristóbal de La Laguna, Tenerife, Spain; <sup>d</sup>Grupo de I+D+i EVOADAPTA (Evolución Humana y Adaptaciones durante la Prehistoria), Departamento de Ciencias Históricas, Universidad de Cantabria, 44. 39005 Santander, Spain and <sup>e</sup>School of Natural Sciences, University of Central Lancashire, Preston PR1 2HE, United Kingdom

### Abstract

During the last glacial period, rapidly changing environments posed substantial challenges to Neanderthal populations in Europe. Southern continental regions, such as Iberia, have been proposed as important climatic “buffer” zones during glacial phases. Contextualising the climatic and ecological conditions Neanderthals faced is relevant to interpreting their resilience. However, records of the environments and ecosystems they exploited across Iberia exhibit temporal and spatial gaps in coverage. Here we provide new evidence for palaeotemperatures, vegetation structure, and prey herbivore ecology during the late Pleistocene (MIS 5–3) in northern Spain, by applying multiple stable isotope tracers ( $\delta^{18}\text{O}$ ,  $\delta^{13}\text{C}$ ,  $\delta^{15}\text{N}$ ,  $\delta^{34}\text{S}$ ) to herbivore skeletal remains associated with Neanderthal occupations at Axlor Cave, Bizkaia. The results show little change over time and indicate stable climatic conditions and ecosystems across different occupations. Large within-layer isotopic variability in nitrogen and sulphur suggests the presence of a mosaic environment and a variety of isotopic ecotones that were exploited by Neanderthals and their prey. We implement a combination of carbonate and phosphate  $\delta^{18}\text{O}$  measurements to estimate palaeotemperatures using a cost-effective workflow. We show that the targeted use of phosphate  $\delta^{18}\text{O}$  measurements to anchor summer peak and winter trough areas enables high-precision seasonal palaeoclimatic reconstructions.

**Keywords:** Middle Palaeolithic, MIS 3, archaeozoology, Cantabria, Palaeoclimatology, Palaeoecology, tooth enamel, bone collagen

(Received 25 October 2022; accepted 24 May 2023)

### INTRODUCTION

How Neanderthals exploited and adapted to rapidly changing environments during the late Pleistocene is relevant for understanding Neanderthal ecology and of particular importance during the late Marine Isotope Stage (MIS) 3, when they disappeared from the continent. Establishing the ecological niche and adaptability of Neanderthal groups during this time is especially relevant for exploring ecological and evolutionary differences with *Homo sapiens* to elucidate the contrasting fate of these two species. It has frequently been suggested that Atlantic and Mediterranean coastal areas provided a relatively mild climate and a stable species-rich ecosystem that buffered a number of late Pleistocene plant and mammal species, including Neanderthals, against harsher climates (O’Regan, 2008; González-Sampériz

et al., 2010; Jennings et al., 2011; Bradtmöller et al., 2012; López-García et al., 2012; Sánchez Yustos and Díez Martín, 2015; Bicho and Carvalho, 2022). There is abundant evidence of hominin life in this period and region, particularly in the northern Atlantic zone of Iberia (in the areas of modern-day Asturias, Cantabria, and the Basque Country), including several MIS 3 Middle Palaeolithic deposits such as La Güelga, El Castillo, Esquilieu, Morín, El Cuco, Amalda I, and Axlor (Maroto et al., 2012; Higham et al., 2014; Straus and González Morales, 2016; Marín-Arroyo et al., 2018) as well as a small number of assemblages that are consistent with the Châtelperronian technocomplex (Ríos-Garaizar et al., 2022). Extensive archaeological and archaeozoological assemblages have been excavated from many of these sites (Ríos-Garaizar et al., 2012; Yravedra-Sainz de los Terreros et al., 2016; Rasilla et al., 2020; Álvarez-Vena et al., 2021), and key lines of research into late Neanderthal subsistence, behaviour, and resilience are ongoing in the region (Gómez-Olivencia et al., 2018; Marín-Arroyo et al., 2020; Marín-Arroyo and Sanz-Royo, 2022; Vidal-Cordasco et al., 2022).

Despite the abundant record of hominin activities, palaeoclimatic records to support the notion of contemporary climatic

\*Corresponding authors: Sarah Pederzani; Email: [scpederz@ull.edu.es](mailto:scpederz@ull.edu.es); Ana B. Marín-Arroyo; Email: [anabelen.marin@unican.es](mailto:anabelen.marin@unican.es)

**Cite this article:** Pederzani S, Britton K, Jones JR, Agudo Pérez L, Geiling JM, Marín-Arroyo AB (2023). Late Pleistocene Neanderthal exploitation of stable and mosaic ecosystems in northern Iberia shown by multi-isotope evidence. *Quaternary Research* 1–25. <https://doi.org/10.1017/qua.2023.32>



stability and mildness are predominantly far removed from archaeological sites (e.g., marine cores in the Bay of Biscay and at the Iberian margin; Roucoux *et al.*, 2005; Martrat *et al.*, 2007; Sánchez Goñi *et al.*, 2008; Moreno *et al.*, 2014). Furthermore, terrestrial records and local reconstructions from archaeological deposits are not abundant and provide inconsistent coverage of the peninsula and are particularly sparse in the region surrounding modern-day Cantabria and the Basque Country (Moreno *et al.*, 2014; Fernández-García *et al.* 2023).

In recent years, substantial efforts have been made to reconstruct the chronology of archaeological sites and to better understand the local palaeoenvironmental conditions Neanderthals faced (Wood *et al.*, 2014, 2018; Jones *et al.*, 2018, 2020; Marín-Arroyo *et al.*, 2018). One established way of generating information on landscape-scale changes in past climates, environments, and ecosystems is the analysis of stable isotope ratios of macromammal remains from archaeozoological and palaeontological assemblages. Particularly in the case of anthropogenically accumulated faunal assemblages, a direct association with the archaeological record, and therefore, traces of hominin behaviour, can be established. A variety of isotopic tracers can be applied to skeletal faunal remains to yield a wealth of palaeoclimatic, palaeoenvironmental, and palaeoecological information (Drucker *et al.*, 2003, 2011; Stevens and Hedges, 2004; Stevens *et al.*, 2008, 2014; Bocherens *et al.*, 2014; Nehlich, 2015; Jones *et al.*, 2018, 2019, 2020; Pederzani and Britton, 2019; Reade *et al.*, 2020). Stable isotope studies of faunal remains, specifically using carbon and nitrogen stable isotope analyses, have already started to provide valuable information concerning the local environmental conditions experienced by late Neanderthals and Upper Palaeolithic *Homo sapiens* in the Cantabrian region (Jones *et al.*, 2018, 2019), indicating, for example, a tentative shift to a more open steppe environment with a niche separation between horses (*Equus ferus*) and red deer (*Cervus elaphus*) after the end of Middle Palaeolithic and initial Aurignacian (Jones *et al.*, 2018, 2020; Rodríguez-Almagro *et al.*, 2021). Such palaeoecological information has recently increasingly been supplemented by information on spatial ecology from sulphur stable isotope analysis (Jones *et al.*, 2019; Reade *et al.*, 2020). In these examples, addition of sulphur stable isotope analysis as a spatially informative tracer has been very effective in teasing apart dietary and spatial niche separation between different species. Together, these environmental and spatial isotopic tracers effectively track landscape and palaeoecological changes and the presence of isotopic microenvironments, whereas identifying clear climatic trends has been more challenging (Jones *et al.*, 2019).

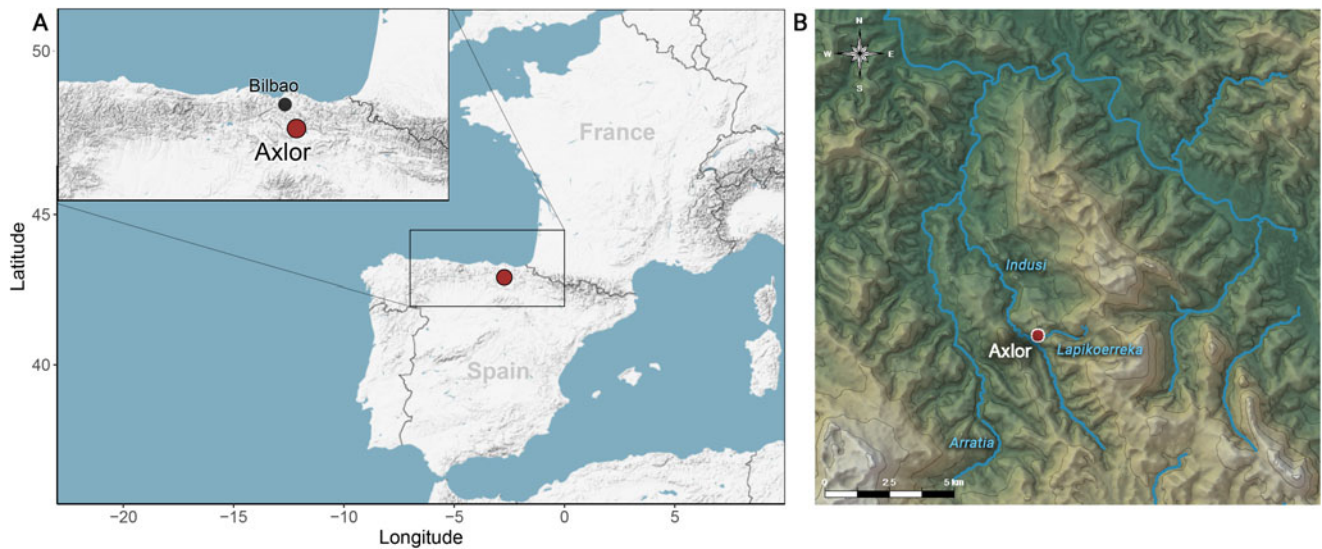
Larger data sets from more strongly climatically driven stable isotope systems, such as  $\delta^{18}\text{O}$ , are needed to better understand the palaeoclimatic context for the late Pleistocene on the northern Spanish coast and to reconstruct palaeotemperatures. Temperature conditions, particularly seasonal temperature variations, are important drivers of plant and animal ecosystems and shape landscapes that hominins inhabit, the subsistence resources that are available for their consumption, and the conditions they need to shelter from. The existing stable isotopic proxies indicate a complex ecosystem with an extensive range of different microenvironments coexisting within this particular orographic region (Jones *et al.*, 2018, 2019; Marín-Arroyo *et al.*, 2020). Such strong spatial gradients in the Cantabrian environment necessitate more local climatic information to disentangle how the northern Iberian coast may have acted as an area that sheltered populations of late Pleistocene mammal species, including Neanderthals, from the rapid and dramatic climatic changes of this time period.

Axlor is a particularly suitable site to reveal the climatic and environmental conditions Neanderthals faced from MIS 5 to early MIS 3 in northern Iberia, as it preserves a long Middle Palaeolithic sequence containing lithics, fauna, and hominin skeletal remains. Using ungulate remains from the anthropogenically accumulated faunal assemblage, we apply an extensive and complementary suite of stable isotopic analyses ( $\delta^{18}\text{O}$ ,  $\delta^{13}\text{C}$ ,  $\delta^{15}\text{N}$ ,  $\delta^{34}\text{S}$ ) to provide new insights into local palaeoclimate, including seasonal palaeotemperatures—a first for the Middle Palaeolithic of this region. We employ an innovative combination of carbonate and phosphate oxygen stable isotope analyses of sequentially sampled tooth enamel, in which carbonate measurements are used to first identify intra-tooth  $\delta^{18}\text{O}$  peaks and troughs, followed by phosphate oxygen isotope analysis of a limited sample selection for palaeotemperature reconstructions. Not only does our approach allow the reconstruction of seasonal palaeotemperatures in a streamlined and cost-effective way, but it also allows us to explore the amount of uncertainty introduced from converting  $\delta^{18}\text{O}$  values between measurements of the different fractions, permitting us to provide recommendations for optimal extraction of palaeotemperature information from combined carbonate/phosphate oxygen isotope time series. In parallel,  $\delta^{13}\text{C}$ ,  $\delta^{15}\text{N}$ , and  $\delta^{34}\text{S}$  are measured on red deer, horse, and large bovine (aurochs/bison [*Bos primigenius*/*Bison priscus*]) bone elements to extract information on landscape and vegetation structure and herbivore feeding ecology ( $\delta^{13}\text{C}$ ,  $\delta^{15}\text{N}$ ), as well as herbivore spatial ecology ( $\delta^{34}\text{S}$ ) associated with the late Pleistocene Neanderthal occupations at the site.

## THE SITE OF AXLOR

Axlor Cave is located in Dima municipality, Bizkaia Province, in the Basque Autonomous Community located in northern Iberia (Fig. 1). The region is characterised by a narrow coastal band, bounded by the Cantabrian Mountains to the south, with mountain ridges often extending up to the shore. The valleys in this coastal corridor are typically deep and narrow, running perpendicular to the coastline. Bizkaia is ecologically and topographically distinct from the western parts of the Cantabrian region and is situated between the Atlantic coast and a relatively low section of the Cantabrian Cordillera, with winding, narrow, steep-sided valleys, creating a structurally complex, “banded” topography. Axlor is located close to one of the lowest mountain passes linking the Cantabrian basins and the Alavese Plateau (43°7.27'N, 2°43.68'W; see Fig. 1), at an elevation of approximately 320 m above sea level (m asl), on the southwestern slope of the Dima valley. The area is characterised by rugged, mountainous terrain (Ríos-Garaizar and Moreno, 2015). Several streams and rivers exist in the vicinity of the site, which is relevant for the interpretation of oxygen stable isotope dynamics. The valley bottom is formed by the stream of the Indusi River, which originates in the nearby Altungane (765 m asl) and Saibigain (800 m asl) mountains (Basaguren and Orive, 1991). An additional small stream runs close to the site, which later merges into the Indusi River (Fig. 1). To the southwest, the Dima valley is bordered by the Sierra de Ugatxa (Urragiko Atxa, 588 m asl), which forms the separation from the parallel valley containing the Arratia River (Basaguren and Orive, 1991). The two valleys, as well as the Indusi and Arratia Rivers, merge at a point ~9 km northwest of Axlor. These rivers form part of the watershed of the Ibaizabal River (Ocio *et al.*, 2016).

Axlor preserves an important Middle Palaeolithic sequence originally excavated by Barandiarán from 1967 to 1974; more



**Figure 1.** (A) Location of Axlor in the Cantabrian region, northern Spain. (B) Hydrotopographic setting of the area surrounding Axlor. Elevation contour lines are spaced 200 m apart. Elevation data from the European Digital Elevation Model v. 1.1 (European Environment Agency, 2016). Site location and waterways imported from OpenStreetMap (OpenStreetMap Contributors, 2020).

recently from 2000 to 2008 by González-Urquijo, Ríos-Garaizar, and Ibáñez-Estévez; and since 2019, by González-Urquijo and Laszúen. These new excavations have yielded a stratigraphic sequence overlapping with, but not identical to, the one described by Barandiarán (1980; for further discussion, see Gómez-Olivencia et al. 2018; Table 1). The material used in this study stems from the faunal collection of the Barandiarán excavation curated at the Biscay Archaeological Museum in Bilbao. In this early excavation, nine layers (I–IX) were identified. Layers III to VIII were attributed to the Middle Palaeolithic based on the lithic record, but with some technological differences between the upper and lower parts of this sequence. In the upper part of the Middle Palaeolithic sequence (Layers III–V), the lithic record has been described as consistent with the Quina Mousterian technocomplex, while the lithic record of the lower sequence (Layers VI–VIII) is dominated by Levallois blank production (Ríos-Garaizar, 2017). The upper part of the Middle Palaeolithic sequence also contains a substantial number of bone tools (Mozota Holgueras, 2012).

The faunal assemblage appears to be predominantly of anthropogenic origin, with very little evidence of carnivore activity. In both the Barandiarán faunal collection (Altuna, 1989) and the collection from the recent re-excavations (Castaños, 2005), a change in the relative abundance of prey species is evident. In Layers III–V (~MIS 4 to early MIS 3) the most abundant taxa, to an approximately equal extent, are red deer (*Cervus elaphus*), aurochs/bison (*Bos primigenius/Bison priscus*), and Iberian ibex (*Capra pyrenaica*) (Altuna, 1989; Castaños, 2005; Gómez-Olivencia et al., 2018). In Layer VII (possible MIS 5c) the faunal spectrum is dominated by *Capra pyrenaica* and in Layer VIII (possible MIS 5c) a substantial proportion of the faunal remains stem from *Cervus elaphus*. A dominance of *Capra pyrenaica* could indicate cold-arid conditions, as it has been shown in northern Iberian examples that they may have been more resistant to arid conditions or phases of low primary productivity than other taxa such as large bovines (Jones et al., 2020, 2021; but see Yravedra and Cobo-Sánchez, 2015). It should be noted that the Barandiarán faunal collection exhibits significant collection bias in favour of morphologically identifiable fragments and likely also mixes to some extent the material of

different deposits due to excavation in artificial spits identified lying horizontally (Gómez-Olivencia et al., 2018), but species abundances in the material here are very similar to those in the more recent excavations (Castaños, 2005) and appear not significantly affected by this collection bias.

Radiocarbon dates obtained from ultrafiltered collagen extracts from Layer IV yielded infinite ages, making this layer and the sequence below (Layers V–IX) older than 51 ka BP (before 1950), but otherwise of unknown age today (Marín-Arroyo et al., 2018; Table 1). It should be noted that many of the radiocarbon dates that have been obtained from the site, including the finite dates from Layers B and D, represent minimum ages. Three of four dates obtained from Layer IV (corresponding Layers B and D) from the 2000–2008 excavations returned infinite radiocarbon ages (Table 1). Two of the infinite ages have minimum age cutoffs that are 3000 yr older than the date recently obtained from Layer III. The only finite date from Layer D (Beta-203,107:  $44,920 \pm 1950$ ) calibrates to 54,805–44,624 cal yr BP, which does overlap to some extent with the new date for Layer III. However, the confidence in the Beta dates is undermined by the fact that most of the series is performed by accelerator mass spectrometry (AMS) without ultrafiltration (Gómez-Olivencia et al., 2020). In addition, those dates lack information on provenance within the site. Therefore, those AMS Beta dates performed without the ultrafiltration protocol must be considered with caution. When dating materials near the limit of radiocarbon dating, if there is a discrepancy between the results, the older dates are generally considered more accurate, assuming that contaminants were not properly removed from the younger ones (Higham, 2011). Accordingly, our examination of chronological hygiene favours the Oxford Radiocarbon Accelerator Unit (ORAU) ultrafiltration bone  $^{14}\text{C}$  ages for final dating assessments owing to their exact provenance, completeness of the bone collagen suitability indicators, and the more conservative results and uncertainties obtained for replicate samples in Axlor. Based on the abundance of red deer in the lower layers of the Middle Palaeolithic sequence and the archaeological similarities in stone tool technology and fire structures between Axlor Layers VI and VII and Arrillor's Medium Complex (Amk and Smkl), it has

**Table 1.** Overview of the Middle Palaeolithic layers identified at Axlør, including published information on their ages.

Barandiáran layer	2000–2008 excavation layer	Lithic technology	Lab reference	Date <sup>14</sup> C yr BP	Error	Method <sup>a</sup>	Material	Element	Sample code	% C	% N	C/N	δ <sup>13</sup> C	δ <sup>15</sup> N	% yield	Approximate age assignment	References
III	B and C	Quina Mousterian	new data in this study – OxA-40151	46,200	3000	UF-AMS	Bone with anthropic breakage	<i>Bos/Bison</i> tibia	AX.11E.255.128/AXL55	32.4	11.5	3.3	–20.0	6.4	1.1	Early MIS 3	González-Urquijo et al., 2021; Gómez-Olivencia et al., 2023
			Beta-144,262	42,010	1280	AMS	Bone	Unidentified									
			Beta-203,108	42,720	900	AMS	Bone	<i>Bos/Bison</i> tibia									
IV	D	Quina Mousterian	OxA-32428	>49,300		UF-AMS	Bone with anthropic breakage	<i>Cervus elaphus</i> medial phalanx	AX.11C.290.149	42.3	14.9	3.3	–19.8	3.5	3.1	Early MIS 3 /MIS 4	Marín-Arroyo et al., 2018; Gómez-Olivencia et al., 2018; González-Urquijo et al., 2021
			OxA-32429	>49,900		UF-AMS	Bone with anthropic breakage	<i>C. elaphus</i> carpal	AX.11C.300.178	43.0	15.2	3.3	–19.2	6.3	6.0		
			Beta-203,107	44,920	1950	AMS	Bone	<i>Bos/Bison</i> axis									
			Beta-225,486	>43,000		AMS	Bone	<i>C. elaphus</i> metapodial									
V	E	Quina Mousterian													MIS 4	Gómez-Olivencia et al., 2018; González-Urquijo et al., 2021; Sánchez Hernández, 2021	
VI	F	Levallois	Beta-225,478	>47,500		AMS	Bone	<i>C. elaphus</i> metapodial							MIS 4/MIS5	Gómez-Olivencia et al., 2018; González-Urquijo et al., 2021; Sánchez Hernández, 2021	
			Beta-225,485	33,310	360	AMS	Bone	<i>C. elaphus</i> metapodial									
VII	M	Levallois													MIS 5c	Sánchez Hernández, 2021	
VIII	N	Levallois													MIS 5c	Sánchez Hernández, 2021	

<sup>a</sup>Only samples marked with UF-AMS (ultrafiltration and accelerator mass spectrometry) have been produced on ultrafiltered collagen. Sample Beta-144,262 was initially attributed to Layer D (González-Urquijo et al., 2002), but has recently been included in Layer B (González-Urquijo et al., 2021).



been suggested that Layers VI–VIII can be attributed to early MIS 3/ MIS 4 and MIS 4 (Ríos-Garaizar, 2017), but new data suggest an older attribution for these levels to ~60 ka BP and an attribution of the lower levels VII and VIII to MIS 5c (~100 ka BP) (Sánchez Hernández, 2021).

A small number of hominin fossil remains were recovered during excavations, some of which were published soon after the completion of the Barandiarán excavations (Basabe, 1973), while others were only identified as hominin fossil remains during later reanalyses of the collections (Gómez-Olivencia et al., 2020). These recent analyses identified two teeth stemming from Layers IV and V as belonging to Neanderthals and also confirmed the taxonomic and stratigraphic identification of a Neanderthal cranial fragment from Layer VIII identified during the Barandiarán excavations (Gómez-Olivencia et al., 2020). Other hominin remains, described initially by Basabe (1973), have recently come under debate, with some researchers suggesting a *Homo sapiens* taxonomic identification and an origin from the upper layers of the stratigraphy that may have been redeposited due to earlier disturbances of the site during the nineteenth and early twentieth centuries (Gómez-Olivencia et al., 2020, 2023), while others support the original assignment to Neanderthals and argue against any influence of disturbance (González-Urquijo et al., 2021). A recent reply to the latter marks the end of this debate (Gómez-Olivencia et al., 2023), which will likely only be definitively solved using biomolecular evidence and direct dating.

## ISOTOPE ARCHAEOZOOLOGY APPROACHES TO PAST PALAEOENVIRONMENTS

### Oxygen isotope analyses as a proxy of seasonal climate

The use of the oxygen stable isotope composition ( $\delta^{18}\text{O}$ ) of faunal tooth enamel as a proxy of past climates rests on two underlying relationships between  $\delta^{18}\text{O}$  of tooth enamel ( $\delta^{18}\text{O}_{\text{enamel}}$ ) and  $\delta^{18}\text{O}$  of animal drinking water ( $\delta^{18}\text{O}_{\text{dw}}$ ) and between  $\delta^{18}\text{O}$  of environmental water ( $\delta^{18}\text{O}_{\text{ew}}$ ) and air temperature, which is a dominant effect in mid- to high latitudes (see below in this paragraph) (Longinelli, 1984; Luz et al., 1984; Rozanski et al., 1993; Iacumin et al., 1996; Kohn et al., 1996; Clark and Fritz, 1997; Müller et al., 2017). Tooth enamel is formed in isotopic equilibrium with animal body water (Longinelli, 1984; Luz et al., 1984; Iacumin et al., 1996; Daux et al., 2008), which in turn mirrors variability in  $\delta^{18}\text{O}$  of drinking water for large-bodied, obligate drinking terrestrial mammals such as horses, large bovines, rhinocerotids, or proboscideans, due to the large amounts of drinking water consumed by these animals (D'Angela and Longinelli, 1990; Bryant et al., 1994, 1996a; Sánchez Chillón et al., 1994; Hoppe et al., 2004; Hoppe, 2006). Consequently,  $\delta^{18}\text{O}_{\text{enamel}}$  of these animals empirically shows a strong linear correlation with  $\delta^{18}\text{O}$  of drinking water (Longinelli, 1984; Luz et al., 1984; Rozanski et al., 1992; Hoppe, 2006; Tütken et al., 2007; Arppe and Karhu, 2010; Pryor et al., 2014; Skrzypek et al., 2016). The isotopic composition of surface waters that are available for drinking is determined by several complex effects, but the oxygen isotopic composition of precipitation ( $\delta^{18}\text{O}_{\text{precip}}$ ) at mid- to high-latitude locations in temperate climate zones generally shows a strong dependence on air temperature within a single location, and this translates into precipitation-fed surface waters (Dansgaard, 1964; Rozanski et al., 1993; Clark and Fritz, 1997; Kohn and Welker, 2005; Gat, 2010; Stumpp et al., 2014; Müller et al., 2017). Through this effect, the role of  $\delta^{18}\text{O}_{\text{enamel}}$  as a

proxy for palaeotemperatures at mid- to high-latitude sites is derived, where higher  $\delta^{18}\text{O}$  in tooth enamel indicates higher air temperatures, while low  $\delta^{18}\text{O}$  values indicate lower temperatures. This is true on longer timescales of climatic change as well as on subannual timescales (Stumpp et al., 2014; Müller et al., 2017), and such subannual  $\delta^{18}\text{O}$  change is recorded as a sinusoidal seasonal pattern of  $\delta^{18}\text{O}$  in sequential tooth enamel samples of animal teeth, with peaks indicating the summer season and troughs the winter season (Fricke and O'Neil, 1996; Fricke et al., 1998). Such an extraction of a time-dependent measurement series is possible due to the incremental formation of tooth enamel from the crown to the enamel–root junction (ERJ) with no remodelling of the tissue after mineralisation has been completed (Dean, 1987; Hillson, 2005). The stable isotope measurement series obtained from one tooth, therefore, covers the time of tooth formation, which is usually several months to over a year in *Bos/Bison* sp. (Brown et al., 1960). The use of tooth enamel  $\delta^{18}\text{O}$  as a palaeotemperature proxy can be formalised for palaeotemperature estimation by establishing species- and site-specific relationships between  $\delta^{18}\text{O}_{\text{enamel}}$  and  $\delta^{18}\text{O}_{\text{dw}}$  and between  $\delta^{18}\text{O}_{\text{precip}}$  and air temperature via linear regression of modern calibration data (Tütken et al., 2007; Arppe and Karhu, 2010; Skrzypek et al., 2011, 2016; Pryor et al., 2014). It is assumed that the linear relationships established in this way are applicable to the late Pleistocene, as other factors such as animal metabolism, physiology, and drinking requirements are thought to be stable through time (see Supplementary Text 1). For the relationship between  $\delta^{18}\text{O}_{\text{precip}}$  and air temperature, a certain degree of stability in atmospheric circulation is assumed, which, based on circulation models and measurements of old groundwater, seems sufficiently well supported for the timescales covered here (see Supplementary Text 1). Other assumptions, such as a rough isotopic equivalency between animal drinking water and precipitation should be validated on a case-by-case basis. A more detailed breakdown of these assumptions can be found in Supplementary Text 1.

### Bioapatite phosphate and carbonate groups as isotope ratio mass spectrometry (IRMS) analytes

Many palaeotemperature studies focus on the oxygen-bearing phosphate ( $\text{PO}_4^{3-}$ ) component of tooth enamel (a biogenic carbonate-substituted hydroxyapatite, or “bioapatite”), but the carbonate ( $\text{CO}_3^{2-}$ ) moiety presents another oxygen-bearing group that is commonly analysed for  $\delta^{18}\text{O}$ . The oxygen isotopic composition of these different moieties reflects the same environmental proxy information, but each has specific advantages and disadvantages in regard to stable isotope analysis. While analysis of carbonates is generally simpler and comparatively inexpensive, the analysis of the more laborious to analyse phosphate component offers important advantages in preservation and resistance to diagenesis (Iacumin et al., 1996; Zazzo et al., 2004; Lee-Thorp, 2008). Analytical precision can be significantly better for carbonate analyses (between ~0.05‰ and 0.1‰ for dual-inlet IRMS and an automated carbonate preparation device setup) but is practically often similar to the precision achieved for phosphate analyses (0.2–0.3‰) due to widespread use of continuous-flow (CF) IRMS with GasBench peripherals. Analyses of bioapatite phosphate, furthermore, may have an advantage in the context of palaeotemperature reconstruction specifically, as the vast majority of modern calibration data has so far been generated from this analytical fraction (Pederzani and Britton, 2019). The use of

bioapatite carbonate  $\delta^{18}\text{O}$  ( $\delta^{18}\text{O}_{\text{carb}}$ ) for palaeotemperature estimation therefore usually requires an additional conversion step to predicted  $\delta^{18}\text{O}$  of bioapatite phosphate ( $\delta^{18}\text{O}_{\text{phos}}$ ), which incurs an increased estimation uncertainty that may offset the lower analytical precision of some  $\delta^{18}\text{O}_{\text{carb}}$  analyses (Skrzyppek *et al.*, 2016).

Due to the complementary advantages of each fraction, a combination of both types of analysis is desirable. A conversion between  $\delta^{18}\text{O}_{\text{carb}}$  and  $\delta^{18}\text{O}_{\text{phos}}$  is possible, as these measures show a strong linear relationship with a slope close to 1 and an intercept offset ( $\delta^{18}\text{O}_{\text{carb-phos}}$ ) of approximately 9‰ that shows little species-specific variation (Longinelli and Nuti, 1973; Bryant *et al.*, 1996b; Iacumin *et al.*, 1996; Martin *et al.*, 2008; Pellegrini *et al.*, 2011; Chenery *et al.*, 2012; Trayler and Kohn, 2016). This linear relationship can be used to convert between measurements of the different moieties. While  $\delta^{18}\text{O}_{\text{carb-phos}}$  is relatively consistent in empirical studies and matches well with modelled values (Aufort *et al.*, 2017), a certain degree of interindividual variability causes a prediction uncertainty for converting measurements that is not insignificant. Based on a large collection of empirical data, Pellegrini *et al.* (2011) showed that  $\delta^{18}\text{O}_{\text{carb-phos}}$  can vary by a magnitude of approximately 1.5‰. For this reason, the use of the spacing between the fractions as a diagenetic indicator on the level of individual samples has been discouraged by some (Pellegrini *et al.*, 2011; France and Owsley, 2015). In contrast to this, Pryor *et al.* (2014) argued that in the context of palaeotemperature estimation, the error introduced from this conversion is insignificant compared with the calibration errors of the temperature conversion. However, the propagation of this error through the additional temperature calibration steps was not quantitatively considered in Pryor *et al.* (2014), and the particular concerns related to sequentially sampled  $\delta^{18}\text{O}$  time-series data were not discussed. To explore this further, we specifically investigate how the uncertainty introduced from converting  $\delta^{18}\text{O}_{\text{carb}}$  and  $\delta^{18}\text{O}_{\text{phos}}$  affects seasonal palaeotemperature estimates in a workflow that includes inverse modelling of oxygen isotopic time series (e.g., Passey *et al.*, 2005) before temperature estimation.

### Carbon, nitrogen, and sulphur isotopes

The carbon ( $\delta^{13}\text{C}$ ) and nitrogen ( $\delta^{15}\text{N}$ ) isotopic composition of animal bone collagen reflects the isotopic composition of the animal's diet with approximately fixed offsets of ~1‰ for carbon and 3–5‰ for nitrogen on a plant diet (DeNiro and Epstein, 1978, 1981). For herbivores, this means that these systems reflect isotopic dynamics in the plant biome, where  $\delta^{13}\text{C}$  varies with plant photosynthetic pathway ( $\text{C}_3$ ,  $\text{C}_4$ , or CAM); plant functional type (graze vs. browse, woody plants vs. herbaceous plants); vegetation density; and climatic and atmospheric factors such as temperature, aridity, and atmospheric  $\text{CO}_2$  concentration (Park and Epstein, 1961; Tieszen and Boutton, 1989; Merwe and Medina, 1991; Tieszen, 1991). Plant  $\delta^{15}\text{N}$  is driven by climatic factors such as aridity/rainfall and temperature, as well as nitrogen isotopic effects in soils related to soil moisture, bacterial activity, and nutrient availability, which in the late Pleistocene appear to be partially driven by the presence or absence of permafrost (Amundson, 2003; Stevens and Hedges, 2004; Stevens *et al.*, 2008, 2014; Drucker *et al.*, 2011; Craine *et al.*, 2015). These factors create isotopic differences between different plant communities, and through this herbivore  $\delta^{13}\text{C}$  and  $\delta^{15}\text{N}$  act as proxies for dietary specialisation. Moreover, the climatic factors influencing  $\delta^{13}\text{C}$

and  $\delta^{15}\text{N}$ , as well as the climatic tolerances of different plants and the resulting relationship between landscape change and climate change, mean that plant and herbivore  $\delta^{13}\text{C}$  and  $\delta^{15}\text{N}$  also track underlying changes in climate and landscape structure.

The sulphur isotopic composition ( $\delta^{34}\text{S}$ ) of herbivore collagen reflects plant  $\delta^{34}\text{S}$  with little biological fractionation and, through this, underlying isotopic variability in the geosphere and hydrosphere. Differences in  $\delta^{34}\text{S}$  exist between different bedrock types and soils, which are often strongly driven by the isotopic differentiation between sulphur sources of marine and nonmarine origin (Thode, 1991; Nehlich, 2015). Furthermore, wetland plants can show very distinct  $\delta^{34}\text{S}$  signatures due to their uptake of sulphides that accumulate in anoxic growing conditions (Guiry *et al.*, 2021). These dynamics create spatial differences in  $\delta^{34}\text{S}$  of bioavailable sulphur, enabling the use of  $\delta^{34}\text{S}$  as a movement or location tracer, particularly in coastal regions (McArdle *et al.*, 1998; Nehlich, 2015; Bataille *et al.*, 2021). However, spatial patterns of bioavailable sulphur, and therefore spatial variability of  $\delta^{34}\text{S}$  of plants, are complex and do not exactly mirror those in bedrock. At the same time, modern anthropogenic impacts (e.g., from fertilizers) make it additionally difficult to establish spatial variability in  $\delta^{34}\text{S}$  in a way that is useful for archaeological applications (Mizota and Sasaki, 1996; Szpak *et al.*, 2019; Bataille *et al.*, 2021). At the same time, an impact of permafrost presence and climatically induced changes in baseline  $\delta^{34}\text{S}$  have been proposed (Reade *et al.*, 2020). Specific assignment of spatial ecologies based on  $\delta^{34}\text{S}$  therefore remains experimental but can be useful in indicating changes in spatial ecology or an overlap (or lack thereof) in the habitats used by different species within a single food web (e.g., Britton *et al.*, 2023). This is particularly the case in coastal environments, where larger  $\delta^{34}\text{S}$  gradients are to be expected.

## MATERIALS AND METHODS

### Materials and sampling methodology

Multiple isotopic approaches were applied to herbivore skeletal remains, including bones and teeth, to obtain climatic, environmental, and ecological information for the Middle Palaeolithic landscapes around Axlör. Faunal specimens were sampled from the collections of the Arkeologi Museoa Bilbao, where the material is curated. All specimens were photographed before and after sampling. A total of seven suitable aurochs/bison (*Bos primigenius/Bison priscus*) teeth from Layers III, IV, and VI were chosen for oxygen stable isotope analysis of sequentially sampled tooth enamel from the entire sequence (Table 2). The sample obtained here represents a mixture of lower second (M2) and third molars (M3) (Table 2). Sequential samples were drilled from the occlusal surface to the ERJ along the full crown height. Each sample was removed as a small strip of ~1 mm × 5 mm dimension perpendicular to the tooth growth using a diamond tipped drill bit. Drill bits were cleaned with ~1 M nitric acid and two cycles of ultrasonication in Milli-Q ultra-pure water (5 minutes each) to prevent cross-contamination between samples. A total of 106 sequential samples were obtained and analysed for  $\delta^{18}\text{O}_{\text{carb}}$ . Summer peak and winter trough areas of the  $\delta^{18}\text{O}$  time series were identified by visual examination, and three samples each per summer peak and winter trough (n = 47) were chosen to be analysed for  $\delta^{18}\text{O}_{\text{phos}}$  as well.

Additionally, bone samples were taken from aurochs/bison, horses, and red deer for Layers III, IV, VI, and VIII (Table 3) to generate new carbon and nitrogen (n = 24) and sulphur (n = 65)

**Table 2.** Contextual information of teeth sampled for oxygen isotope analysis of tooth enamel bioapatite carbonate and bioapatite phosphate.

Sample code	Layer	Chronology <sup>a</sup>	Taxon	Tooth position	No. seq. samples bioapatite carbonate	No. seq. samples bioapatite phosphate
AXL59	III	Early MIS 3	<i>Bos/Bison</i> sp.	M3, lower, right	14	6
AXL60	III			M2, lower, right	18	9
AXL65	III			M2, lower, right	14	5
AXL66	III			M3, lower, right	16	7
AXL70	IV	Early MIS 3/MIS 4		M3, lower, right	12	4
AXL77	VI	MIS 4/MIS5		M3, lower, left	14	7
AXL86	VI			M3, lower, left	18	9
Total					106	47

<sup>a</sup>MIS, Marine Isotope Stage.

stable isotope data from bone collagen. An existing data set of carbon and nitrogen stable isotope data from 42 bone samples from Axlor published in Jones et al. (2018) was expanded to a total sample size of 66 (Table 3). Sulphur stable isotope data were generated from the same collagen samples extracted for this study, and bone originally used by Jones et al. (2018) was resampled to generate sulphur stable isotope data for the existing carbon and nitrogen stable isotope data set. A tibia fragment from a large bovine (AXL55) from Layer III was additionally sent for radiocarbon dating at the ORAU, University of Oxford, UK.

### Stable isotope analysis of bioapatites ( $\delta^{18}\text{O}_{\text{phos}}$ , $\delta^{18}\text{O}_{\text{carb}}$ , $\delta^{13}\text{C}_{\text{carb}}$ )

For carbon and oxygen stable isotope analysis of tooth enamel carbonates, approximately 5 mg of untreated tooth enamel powder was sent for analysis at IsoAnalytical (Crewe, UK), where samples were weighed into clean exetainer tubes, which were then flushed with 99.995% helium. Phosphoric acid was prepared following guidelines in Coplen et al. (1983) and was then injected

through vial septa, and samples were left to react overnight to allow for complete conversion to  $\text{CO}_2$ . The resulting  $\text{CO}_2$  was then analysed for  $\delta^{13}\text{C}$  and  $\delta^{18}\text{O}$  by CF-IRMS using a Europa Scientific 20–20 isotope ratio mass spectrometer. Stable isotope measurements were calibrated to the VPDB (Vienna Pee Dee Belemnite) scale and quality controlled using an in-house calcium carbonate standard (IA-R022, accepted values:  $\delta^{13}\text{C} = -28.63\text{‰}$  VPDB and  $\delta^{18}\text{O} = -22.69\text{‰}$  VPDB), the international carbonate standard NBS-18 ( $\delta^{13}\text{C} = -5.01\text{‰}$  VPDB and  $\delta^{18}\text{O} = -23.2\text{‰}$  VPDB), and an in-house chalk standard (IA-R066, accepted values:  $\delta^{13}\text{C} = 2.33\text{‰}$  VPDB and  $\delta^{18}\text{O} = -1.52\text{‰}$  VPDB). The accepted values of the in-house standards IA-R022 and IA-R066 were obtained by calibrating against international reference materials. Values of IA-R022 were obtained by calibrating against NBS-18 and NBS-19 (TS-limestone,  $\delta^{13}\text{C} = 1.95\text{‰}$  VPDB and  $\delta^{18}\text{O} = -2.20\text{‰}$  VPDB), while values of IA-R066 were obtained using NBS-18 and IAEA-CO-1 (Carrara marble,  $\delta^{13}\text{C} = 2.5\text{‰}$  VPDB and  $\delta^{18}\text{O} = -2.4\text{‰}$  VPDB), respectively. A limestone in-house standard, ILC1, was used as an additional quality-control standard. Values obtained for this standard during the analyses of Axlor samples of  $\delta^{13}\text{C} = 2.21 \pm 0.09\text{‰}$  VPDB (1 SD,  $n = 2$ ) and  $\delta^{18}\text{O} = -3.83\text{‰}$  VPDB (1 SD,  $n = 2$ ) compare well with the long-term mean values of this standard, which were  $\delta^{13}\text{C} = 2.13\text{‰}$  VPDB (1 SD,  $n = 2$ ) and  $\delta^{18}\text{O} = -3.99\text{‰}$  VPDB. Analytical precision of quality-control standard replicates was better than 0.09‰ for  $\delta^{13}\text{C}$  and better than 0.14‰ for  $\delta^{18}\text{O}$ .

Tooth enamel powder samples were converted to silver phosphate for oxygen stable isotope analysis of bioapatite phosphate using digestion with hydrofluoric acid (HF), followed by crash precipitation of silver phosphates following an adapted version of the protocol developed by Dettman et al. (2001) and modified by Tütken et al. (2006), as described in Britton et al. (2015). A full description of this protocol can be found in Supplementary Text 2.

Oxygen isotope delta measurements of  $\text{Ag}_3\text{PO}_4$  were conducted using a high-temperature elemental analyser (TC/EA) coupled to a Delta V isotope ratio mass spectrometer via a Conflo IV interface (Thermo Fisher Scientific, Bremen, Germany) at the Max-Planck-Institute for Evolutionary Anthropology (MPI-EVA). Approximately 0.5 mg of each silver phosphate sample was weighed into cleaned silver capsules (3 mm × 4 mm, IVA Analysentechnik, Meerbusch, Germany) and introduced to the TC/EA using a Costech Zero Blank Autosampler (Costech International, Cernusco sul Naviglio, Italy). Conversion to CO was achieved using a reactor temperature

**Table 3.** Number of data points used in this study for different isotopic analyses of bone collagen.

Layer	Taxon	$\delta^{13}\text{C}$ & $\delta^{15}\text{N}^a$	$\delta^{34}\text{S}$
		N	
III	<i>Bos/Bison</i> sp.	8	8
	<i>Cervus elaphus</i>	1	1
	<i>Equus ferus</i>	1	1
IV	<i>Bos/Bison</i> sp.	7	7
	<i>C. elaphus</i>	12*	12
	<i>E. ferus</i>	2*	2
VI	<i>Bos/Bison</i> sp.	7	7
	<i>C. elaphus</i>	15*	15
	<i>Equus ferus</i>	3*	3
VIII	<i>C. elaphus</i>	10*	9
Total		66	65

<sup>a</sup>Carbon and nitrogen stable isotope data points included from Jones et al. (2018) are marked with an asterisk (\*).



of 1450°C, and gases were separated using an Eurovector E11521 1.4 m × 4 mm × 6 mm stainless steel GC column with 80/100 mesh 5 Å molecular sieve packing (Eurovector Instruments & Software, Pavia, Italy) maintained at 120°C with a carrier gas pressure of 1.3 bar. Samples were measured in triplicate, but in rare cases, individual measurements were rejected if they did not meet quality-control criteria such as appropriate peak area to sample amount relationship. In such cases,  $\delta^{18}\text{O}$  values are therefore only based on two replicates.

The  $\delta^{18}\text{O}$  values were two-point scale normalised to the VSMOW (Vienna Standard Mean Ocean Water) scale using matrix-matched standards calibrated to international reference materials. Scale normalisation was checked using three separate quality-control standards. Scale normalisation was conducted using the B2207 silver phosphate standard ( $\delta^{18}\text{O} = 21.7 \pm 0.3\text{‰}$ , 1 SD; Elemental Microanalysis, Okehampton, UK) and an in-house silver phosphate standard (KDHP.N,  $\delta^{18}\text{O} = 4.2 \pm 0.3\text{‰}$ , 1 SD). This in-house standard was obtained by equilibrating a  $\text{KH}_2\text{PO}_4$  solution with Leipzig winter precipitation at ca. 140°C for several days, after which the solution was neutralised using a small amount of  $\text{NH}_4\text{OH}$  and the phosphate precipitated as silver phosphate by addition of  $\text{AgNO}_3$  solution. The accepted value of this in-house standard was determined by two-point calibration using B2207 and IAEA-SO-6 (barium sulphate,  $\delta^{18}\text{O} = -11.35 \pm 0.3\text{‰}$ , 1 SD; Brand *et al.*, 2009).

Aliquots of an in-house modern cow enamel standard (BRWE, later replaced by BRWE.2 due to exhaustion of this material) and the standard material NIST SRM 120c (formerly NBS 120c) were precipitated and measured alongside each batch of samples to ensure equal treatment. Additionally, a commercially available silver phosphate (AS337382, Sigma Aldrich, Munich, Germany) was used as a third quality-control standard to check across-run consistency of scale normalisation independent of silver phosphate precipitation. Measurements of these standards gave  $\delta^{18}\text{O}$  values of  $15.2 \pm 0.1\text{‰}$  for BRWE (1 SD,  $n = 12$ ),  $14.7 \pm 0.3$  for BRWE.2 (1 SD,  $n = 10$ ),  $21.6 \pm 0.7\text{‰}$  for NIST SRM 120c (1 SD,  $n = 22$ ), and  $13.8 \pm 0.3\text{‰}$  for AS337382 (1 SD,  $n = 66$ ). This compares well with the consensus value for NIST SRM 120c of 21.7‰ (Puc at *et al.*, 2010), as well as the long-term averages for BRWE of  $15.2 \pm 0.3\text{‰}$ ,  $14.5 \pm 0.4$  for BRWE.2, and  $14.0 \pm 0.3\text{‰}$  for AS337382. Samples were usually measured in triplicate (as 0.5 mg aliquots), and average reproducibility of sample replicate measurements was 0.3‰. Consecutive analysis of sets of standards with widely spaced isotopic value showed no detectable memory effect, and consequently no memory effect correction was used. No effect of the blank, the sample amount, or peak height on the results was observed, and consequently no blank correction or linearity correction was used. If drift across the course of a run was detected in the quality-control standard AS337382, a linear drift correction based on the drift of both normalisation standards was used and checked with the quality-control standard.

#### Stable isotope analysis of bone collagen ( $\delta^{13}\text{C}_{\text{coll}}$ , $\delta^{15}\text{N}_{\text{coll}}$ , $\delta^{34}\text{S}_{\text{coll}}$ )

Typically, <1 g of bone was extracted from selected specimens using a low-vibration micromotor with a diamond-edge cutting wheel. Bones with evidence of anthropogenic modification (e.g., with evidence of fresh fractures or cut marks) were targeted to link specimens to periods of hominin activity. All sampled bones (but not teeth) exhibited such signs of anthropogenic

modification. Samples for bone collagen  $\delta^{13}\text{C}$ ,  $\delta^{15}\text{N}$ , and  $\delta^{34}\text{S}$  analysis were prepared using facilities in the Institute of Biomedicine and Biotechnology (IBBTEC) at the University of Cantabria in Spain. Collagen was extracted following the protocol of Richards and Hedges (1999) and is described in detail in Supplementary Text 3. Carbon, nitrogen, and sulphur stable isotope analyses of extracted bone collagen were undertaken at IsoAnalytical, in duplicate. Details of the IRMS instrumentation and operating parameters are described in Supplementary Text 3.

Carbon and nitrogen stable isotope measurements were calibrated to the VPDB and AIR (atmospheric  $\text{N}_2$ ) scales and quality checked using in-house standards IA-R068 (soy protein, accepted values:  $\delta^{13}\text{C} = -25.22\text{‰}$  VPDB and  $\delta^{15}\text{N} = 0.99\text{‰}$  AIR), IA-R038 (L-alanine, accepted values:  $\delta^{13}\text{C} = -24.99\text{‰}$  VPDB and  $\delta^{15}\text{N} = -0.65\text{‰}$  AIR), IA-R069 (tuna protein, accepted values:  $\delta^{13}\text{C} = -18.88\text{‰}$  VPDB and  $\delta^{15}\text{N} = 11.60\text{‰}$  AIR), and a mixture of IAEA-C7 (oxalic acid,  $\delta^{13}\text{C} = -14.48\text{‰}$  VPDB) and in-house standard IA-R046 (ammonium sulphate,  $\delta^{15}\text{N} = 22.04\text{‰}$  AIR). The accepted values of in-house standards were obtained via calibration against international reference materials: IA-R068, IA-R038, and IA-R069 against IAEA-CH6 (sucrose,  $\delta^{13}\text{C} = -10.449\text{‰}$  VPDB) and IAEA-N-1 (ammonium sulphate,  $\delta^{15}\text{N} = 0.40\text{‰}$  AIR). During the analysis of Axlor samples, IA-R069 gave values of  $\delta^{13}\text{C} = -18.90 \pm 0.04\text{‰}$  VPDB (1 SD,  $n = 6$ ) and  $\delta^{15}\text{N} = -0.65 \pm 0.03\text{‰}$  AIR (1 SD,  $n = 6$ ). Average reproducibility of samples measured in duplicate was 0.04‰ for  $\delta^{13}\text{C}$  and 0.01‰ for  $\delta^{15}\text{N}$ .

For sulphur stable isotope analysis, calibration to the VCDT (Vienna Ca on Diablo Troilite) scale and correction for  $^{18}\text{O}$  contribution were conducted using in-house standards IA-R061 (barium sulphate,  $\delta^{34}\text{S} = 20.33\text{‰}$  VCDT), IA-R025 (barium sulphate,  $\delta^{34}\text{S} = 8.53\text{‰}$  VCDT), and IA-R026 (silver sulphide,  $\delta^{34}\text{S} = 3.96\text{‰}$  VCDT). Accepted values for these in-house standards were obtained by calibrating against international reference materials NBS-17 (barium sulphide,  $\delta^{34}\text{S} = 5.25\text{‰}$  VCDT) and IAEA-S-1 (silver sulphide,  $\delta^{34}\text{S} = -0.30\text{‰}$  VCDT). IA-R061, IAEA-SO-5 (barium sulphate,  $\delta^{34}\text{S} = 20.3\text{‰}$  VCDT), IA-R068 (soy protein,  $\delta^{34}\text{S} = 5.25\text{‰}$  VCDT), and IA-R069 (tuna protein,  $\delta^{34}\text{S} = 18.91\text{‰}$  VCDT) were used as quality-control standards. The accepted values of IA-R068 and IA-R069 were obtained via calibration using the international reference materials NBS-17 and IAEA-SO-5. During the analysis of Axlor samples, the following values were obtained for the quality-control standards: IA-R061  $\delta^{34}\text{S} = 20.32 \pm 0.08\text{‰}$  VCDT (1 SD,  $n = 6$ ), IAEA-SO-5  $\delta^{34}\text{S} = 0.47 \pm 0.07\text{‰}$  VCDT (1 SD,  $n = 2$ ), IA-068  $\delta^{34}\text{S} = 5.17 \pm 0.15\text{‰}$  VCDT (1 SD,  $n = 4$ ), and IA-R069  $\delta^{34}\text{S} = 18.85 \pm 0.10\text{‰}$  VCDT (1 SD,  $n = 4$ ). Average reproducibility of samples measured in duplicate was 0.2‰.

#### Radiocarbon dating

A bone sample from a *Bos/Bison* sp. tibia (AXL55) from Layer III was radiocarbon dated at the ORAU under the sample code OxA-40151. Both collagen extraction for carbon and nitrogen stable isotope analyses and radiocarbon dating for this sample were conducted at the ORAU (see Supplementary Text 4).

#### Seasonal palaeotemperature estimation

To determine preservation status and establish the linear relationship between the two analytes,  $\delta^{18}\text{O}_{\text{phos}}$  and  $\delta^{18}\text{O}_{\text{carb}}$  measurements made on the same sample were first checked against each

other and against published data sets of the phosphate to carbonate  $\delta^{18}\text{O}$  spacing ( $\delta^{18}\text{O}_{\text{carb-phos}}$ ). The resulting relationship was then used to predict  $\delta^{18}\text{O}_{\text{phos}}$  for the samples with only  $\delta^{18}\text{O}_{\text{carb}}$  available, and then predicted  $\delta^{18}\text{O}_{\text{phos}}$  values were combined with direct  $\delta^{18}\text{O}_{\text{phos}}$  measurements in the peak and trough areas to form an aggregated  $\delta^{18}\text{O}_{\text{phos}}$  seasonal time series as the basis for palaeotemperature estimation (Fig. 2). For direct comparisons of seasonal  $\delta^{18}\text{O}_{\text{phos}}$  values across archaeological layers and with other sites, direct  $\delta^{18}\text{O}_{\text{phos}}$  measurements were used (Fig. 3).

Before summer and winter palaeotemperature estimation, aggregated  $\delta^{18}\text{O}_{\text{phos}}$  time series were put into an inverse model following Passey et al. (2005) to remove the damping of the seasonal  $\delta^{18}\text{O}$  amplitude that is caused by time averaging through enamel mineralization and homogenization within each incremental sample. This approach estimates the original  $\delta^{18}\text{O}$  input into tooth enamel by inverse modelling of the time averaging introduced through enamel mineralization and the sampling procedure by taking into account the sampling geometry and species-specific parameters of enamel formation. A detailed description of the modelling procedure with associated code can be found in Passey et al. (2005). It should be noted that this inverse model was originally developed for ever-growing teeth and does not take into account the slowing of enamel growth towards the ERJ seen in some molars of large ungulates, particularly horses (Zazzo et al., 2012; Bendrey et al., 2015). However, while such considerations have been used to develop updated inverse models for sheep (Green et al., 2018), no such model is currently available for cattle/bison, and several of the fundamental enamel mineralisation parameters necessary for such a model are unknown for these species. In cattle and bison, this effect is visible but not as pronounced as in other species, and mostly affects the late-growing portions of the third molar. Due to this effect, the amplitudes reconstructed here may represent minimum amplitudes; however, a systematic difference between the amplitudes reconstructed for second molars compared with third molars is not observed. Therefore, we estimate that this effect is relatively small in this study.

Enamel formation input parameters were chosen to reflect *Bos/Bison* sp. amelogenesis, following values given in Passey and Cerling (2002) and Kohn (2004). The initial mineral content of enamel was set at 25%, enamel appositional length as 1.5 mm, and maturation length as 25 mm. Additionally, sample input variables were given for distance between samples and sample depth. During the modelling procedure, a damping factor describing the damping of the isotopic profile amplitude needs to be chosen using an adjustment of a measured error term ( $E_{\text{meas}}$ ) to the prediction error ( $E_{\text{pred}}$ ). The damping factor in this study ranged between 0.01 and 0.06.

The most likely model solutions were used to extract corrected summer peak and winter trough  $\delta^{18}\text{O}$  values. Modelled summer and winter values were extracted in the  $\delta^{18}\text{O}$  profile locations that correspond to peaks and troughs in the original unmodelled  $\delta^{18}\text{O}$  profile. The extracted modelled summer peak and winter trough values were used as the input to generate summer and winter  $\delta^{18}\text{O}_{\text{dw}}$  values as well as summer and winter absolute temperatures. Mean annual  $\delta^{18}\text{O}$  values were computed directly from raw  $\delta^{18}\text{O}_{\text{phos}}$  values, rather than from model corrected curves. If a systematic sampling geometry is applied, the inverse model essentially symmetrically extends the amplitude of the sinusoidal  $\delta^{18}\text{O}$  curve, making little changes to the average  $\delta^{18}\text{O}$  of an annual cycle (for a detailed discussion, see Pederzani et al.,

2021). Therefore, we used annual averages directly from  $\delta^{18}\text{O}_{\text{phos}}$  values to avoid the impact of uncertainty on the model output inflating the error ranges on  $\delta^{18}\text{O}_{\text{dw}}$  and palaeotemperature estimates.

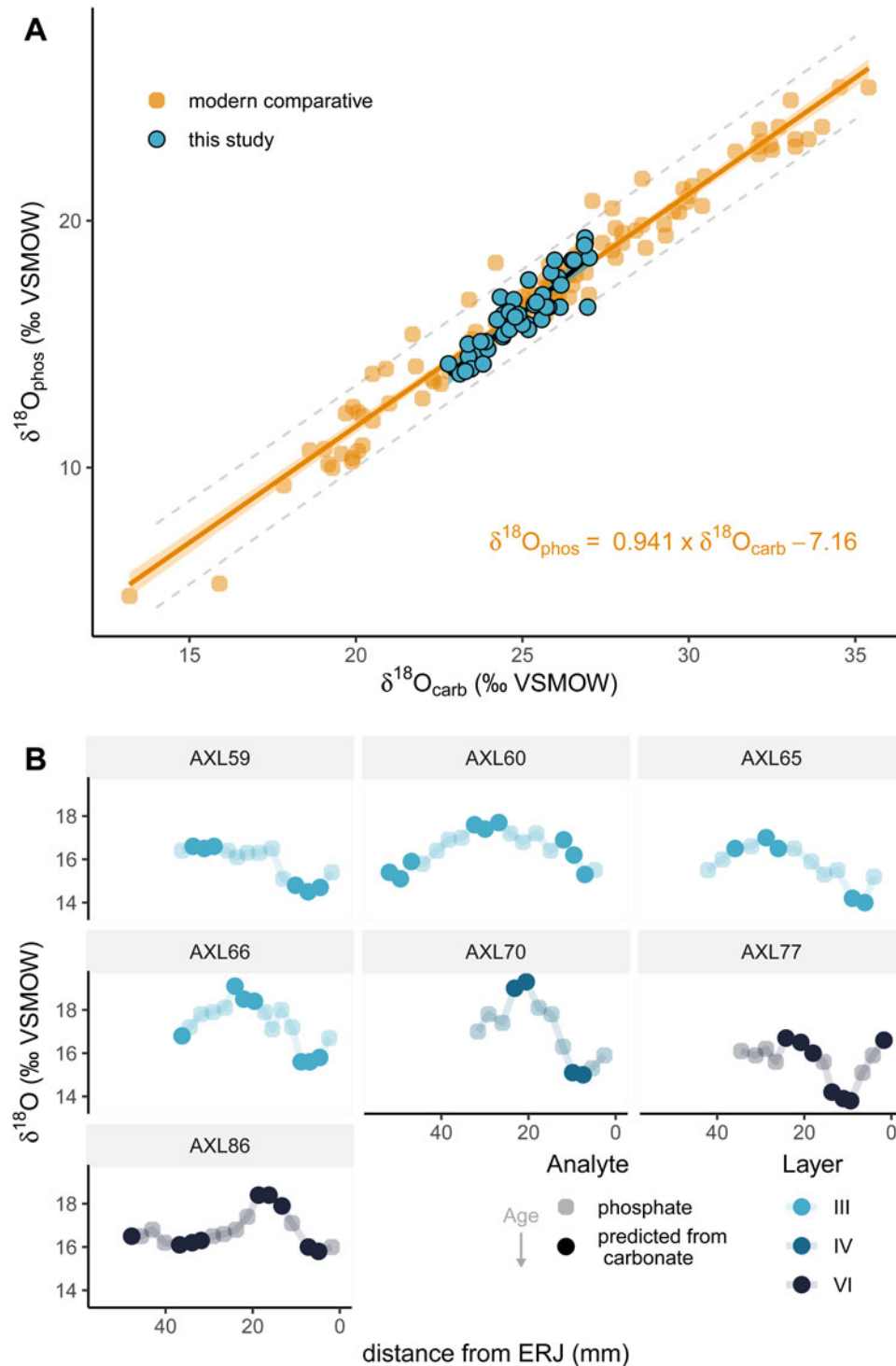
Palaeotemperatures were then computed following methods outlined in Pryor et al. (2014) using the Excel files published therein for computations of temperature estimates and associated uncertainties. Enamel  $\delta^{18}\text{O}$  to  $\delta^{18}\text{O}_{\text{dw}}$  regressions used in this study were established using ordinary least square regression (OLS) applied to published data from bison (Hoppe, 2006) and cattle (D'Angela and Longinelli, 1990). Modern calibration data to establish the relationship between precipitation  $\delta^{18}\text{O}$  and air temperature were obtained from Global Network of Isotopes in Precipitation (GNIP) stations (IAEA/WMO, 2020) in western, southern, and central Europe, as well as from circum-Mediterranean countries outside Europe that experience precipitation year-round. Usually, only stations with 5 or more years of measurements were used. As the slope of the  $\delta^{18}\text{O}_{\text{precip}}$ -air temperature relationship is known to vary seasonally, separate calibration data sets were generated for reconstructing summer, winter, and mean annual temperatures, using GNIP data for the warmest month (commonly July or August;  $n_{\text{stations}} = 75$ ), coldest month (commonly December or January;  $n_{\text{stations}} = 83$ ), and long-term mean annual averages ( $n_{\text{stations}} = 89$ ), respectively. Regression lines for the  $\delta^{18}\text{O}_{\text{precip}}$ -air temperature relationships were also obtained using OLS. In this workflow, palaeotemperature estimates are made as an average for each stratigraphic unit, with data from all specimens from the same layer being combined into one temperature estimate. This enables the use of a sample size-dependent calculation of estimation uncertainty but introduces a degree of averaging of between-year climatic variability and biological or behavioural variability between individuals. For this reason, temperature seasonality derived from subtracting such pooled summer and winter temperature estimates may deviate somewhat from the full extent of annual temperature change that occurred in some years.

### Predicting $\delta^{18}\text{O}_{\text{phos}}$ from $\delta^{18}\text{O}_{\text{carb}}$

As we use the  $\delta^{18}\text{O}_{\text{carb}}$  to  $\delta^{18}\text{O}_{\text{phos}}$  relationship in this study only to convert  $\delta^{18}\text{O}_{\text{carb}}$  measurements into  $\delta^{18}\text{O}_{\text{phos}}$  values specifically for a group of study specimens with some paired data available, we chose to use the  $\delta^{18}\text{O}_{\text{carb}}$  to  $\delta^{18}\text{O}_{\text{phos}}$  relationship that is specifically derived from our study specimens to predict  $\delta^{18}\text{O}_{\text{phos}}$  from samples that only have  $\delta^{18}\text{O}_{\text{carb}}$  measurements, rather than using the relationship established from modern comparative data.

To test prediction performance of this approach, we conducted a number of performance tests. The R code for these tests can be found in the RMarkdown file of the Supplementary Material. The data set of Axlør  $\delta^{18}\text{O}_{\text{phos}}/\delta^{18}\text{O}_{\text{carb}}$  pairs ( $n = 47$ ), was split into a training data set (two-thirds,  $N = 28$ ) and a validation data set (one-third,  $N = 19$ ), with random allocation of data points into each data set. A linear model (established using OLS) of the relationship between  $\delta^{18}\text{O}_{\text{carb}}$  to  $\delta^{18}\text{O}_{\text{phos}}$  in the training data set was used to predict  $\delta^{18}\text{O}_{\text{phos}}$  for the validation data set, and the results were compared with measured  $\delta^{18}\text{O}_{\text{phos}}$ .

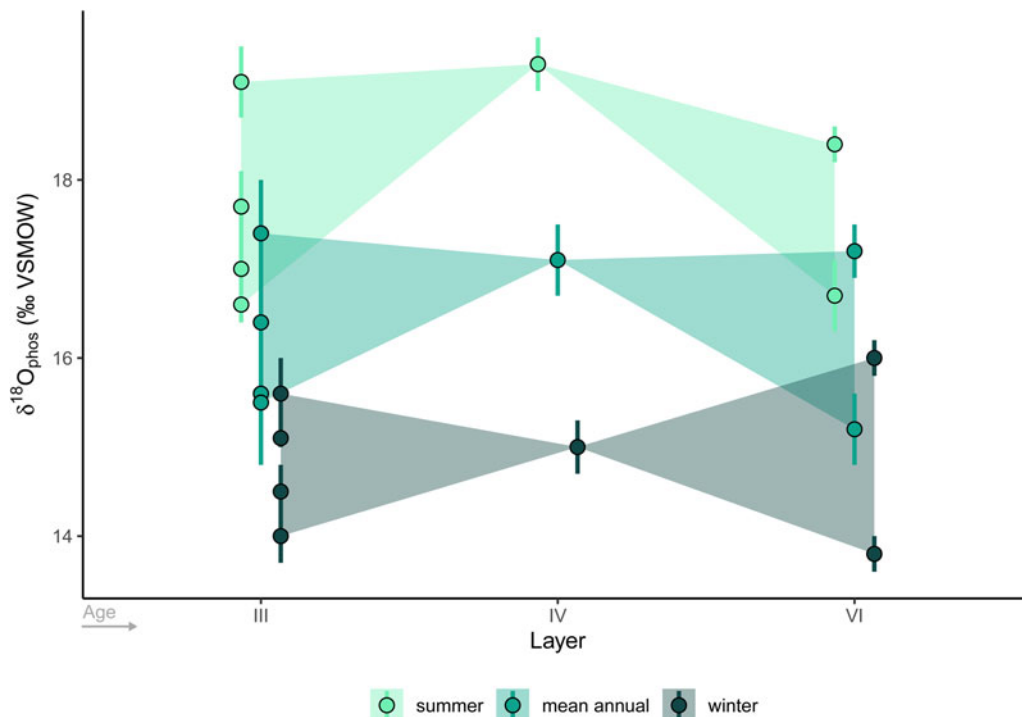
Beyond pure  $\delta^{18}\text{O}_{\text{phos}}$  prediction uncertainty, we also evaluate the effects of this uncertainty on seasonal palaeotemperature estimates, the outcome of interest in our study. For this purpose, we tested the impact of prediction uncertainty of  $\delta^{18}\text{O}_{\text{phos}}$  from  $\delta^{18}\text{O}_{\text{carb}}$  on the outcome of the inverse model, which serves as



**Figure 2.** (A)  $\delta^{18}\text{O}_{\text{carb}}$  and  $\delta^{18}\text{O}_{\text{phos}}$  show a strong linear correlation for *Bos/Bison* sp. samples from this study (blue) with a consistent isotopic spacing of around 9‰ that matches closely with previously reported data from modern enamel samples of large and medium non-human terrestrial mammals (orange; primarily bovines, equids and cervids; data from Bryant *et al.* [1996b]; Iacumin *et al.* [1996]; Shahack-Gross *et al.* [1999]; Zazzo *et al.* [2004]; Miller *et al.* [2019]; for discussion of lack of species differences, see Pellegrini *et al.* [2011]). Grey dashed lines represent the predictive interval of the linear model of the literature data. (B) The relationship between  $\delta^{18}\text{O}_{\text{carb}}$  and  $\delta^{18}\text{O}_{\text{phos}}$  was used to predict  $\delta^{18}\text{O}_{\text{phos}}$  values from  $\delta^{18}\text{O}_{\text{carb}}$  measurements and construct a combined  $\delta^{18}\text{O}$  time series of  $\delta^{18}\text{O}_{\text{phos}}$  measurements (opaque points) and predicted values (transparent points). ERJ, enamel-root junction.

the input for seasonal palaeotemperature estimation. To simulate the noise potentially generated by the uncertainty in predicting  $\delta^{18}\text{O}_{\text{phos}}$ , we chose a single  $\delta^{18}\text{O}$  time series (individual AXL66) and randomly generated 10 alternative combined carbonate/

phosphate time-series data sets by applying a random error onto the predicted  $\delta^{18}\text{O}_{\text{phos}}$  values using random draws from a normal distribution with mean 0 and standard deviation of the root-mean-square error of the model cross-validation test,



**Figure 3.** Summer peak, mean annual, and winter trough  $\delta^{18}\text{O}_{\text{phos}}$  data points extracted from *Bos/Bison* sp. seasonal  $\delta^{18}\text{O}$  sinusoidal curves are similar across the Middle Palaeolithic sequence of Axlor. This indicates that climatic conditions were similar in these different site occupations. Summer peaks and winter trough points were identified by visual inspection of sinusoidal curves, shown in Fig. 2. Shaded areas depict the maximal spread of the data in each layer.

mimicking the distribution of residuals in  $\delta^{18}\text{O}_{\text{phos}}$  prediction (Supplementary Fig. S3). We then processed each of these alternative time-series data sets through the inverse model (Supplementary Fig. S4) and compared the extracted summer peak and winter trough data points (Supplementary Fig. S5).

#### Software, code, and data

All stable isotope ( $\delta^{18}\text{O}$ ,  $\delta^{13}\text{C}$ ,  $\delta^{15}\text{N}$ ,  $\delta^{34}\text{S}$ ) and radiocarbon data, as well as palaeotemperature estimates and any other data generated during this study are openly accessible as .csv files at [https://github.com/ERC-Subsiliencia/Axlor\\_paleoclimatic\\_data](https://github.com/ERC-Subsiliencia/Axlor_paleoclimatic_data). Also included in the repository are all files needed to run the Passey inverse model and to reproduce the palaeotemperature estimates. This article, including code for all data analyses, was written in R (v. 4.2.0; R Core Team, 2020) on a Windows 10 operating system, and the manuscript was rendered to a .docx file using RMarkdown (Allaire et al., 2018). The RMarkdown files used to produce both the main text and Supplementary Material can also be found in the associated online repository and can be used to reproduce the plots, tables, and statistical analyses of this article. The code for data analyses and production of the article manuscript and SI rendering make use of the following packages: matrixcalc\_1.0-5 (Novomestky, 2021), Metrics\_0.1.4 (Hamner and Frasco, 2018), ggpubr\_0.4.0 (Kassambara, 2020a), patchwork\_1.1.1 (Pedersen, 2020), magick\_2.7.3 (Ooms, 2020), scales\_1.2.0 (Wickham and Seidel, 2020), rstatix\_0.7.0 (Kassambara, 2020b), officer\_0.4.2 (Gohel, 2020a), stringr\_1.4.0 (Wickham, 2019), flextable\_0.7.0 (Gohel, 2020b), knitr\_1.39 (Xie, 2014), wesanderson\_0.3.6 (Ram and Wickham, 2018), captioner\_2.2.3 (Alatheia, 2015), cowplot\_1.1.1 (Wilke, 2019), tidyr\_1.2.0 (Wickham and Henry, 2019), dplyr\_1.0.9 (Wickham et al., 2019), and ggplot2\_3.3.6 (Wickham, 2016).

## RESULTS

### Radiocarbon dating

A new  $^{14}\text{C}$  date obtained for Layer III (OxA-40151) provided a radiocarbon age of  $46,200 \pm 3,000$  yr BP, which calibrates between 45,510 cal yr BP and the end of the calibration curve at  $>55,000$  cal yr BP (calibrated using IntCal20 [Reimer et al., 2020], OxCal version 4.4 [Bronk Ramsey, 2009]; see Supplementary Fig. S1). The date gives a median calibrated age of 49,690 cal yr BP, but it should be noted that due to the truncation of the posterior probability curve at the end of the calibration curve, this may represent a slight age underestimation. The collagen extract falls within acceptable levels of quality-control criteria, with a C/N ratio of 3.3, 32.4% C and 11.5% N, and stable carbon and nitrogen isotope delta values of  $-20.0\text{‰}$   $\delta^{13}\text{C}$  and  $6.4\text{‰}$   $\delta^{15}\text{N}$  are consistent with expected values for a large bovine in this time period, indicating that the collagen is well preserved in this sample (Supplementary Table S1).

### Carbonate and phosphate oxygen

As expected from empirical and theoretical data on the relationship between  $\delta^{18}\text{O}_{\text{carb}}$  and  $\delta^{18}\text{O}_{\text{phos}}$ , we observe a clear linear relationship between the two fractions in our data with a slope close to 1, matching previously published data on modern—and therefore pristinely preserved—bioapatites from a variety of mammal species (Fig. 2). With the exception of a single sample (AXL65.4), all Axlor data points fall within the predictive interval of the modern comparative data (Bryant et al., 1996b; Iacumin et al., 1996; Shahack-Gross et al., 1999; Zazzo et al., 2004; Miller et al., 2019), and even this outlier sample still falls within the variation observed in these modern data (Fig. 2). The regression of our data results in an equation with a slope slightly higher



than 1:

$$\delta^{18}\text{O}_{\text{phos}} = 1.1 \cdot \delta^{18}\text{O}_{\text{carb}} - 11.8$$

while the regression equation of the modern comparative data shows a slope slightly below 1, with:

$$\delta^{18}\text{O}_{\text{phos}} = 0.9 \cdot \delta^{18}\text{O}_{\text{carb}} - 7.2$$

In a test of  $\delta^{18}\text{O}_{\text{phos}}$  prediction performance using a linear model of the relationship between  $\delta^{18}\text{O}_{\text{carb}}$  and  $\delta^{18}\text{O}_{\text{phos}}$  from a randomly selected subset training data set of  $\delta^{18}\text{O}_{\text{carb}}$  and  $\delta^{18}\text{O}_{\text{phos}}$  measurement pairs obtained in this study (see section “Predicting  $\delta^{18}\text{O}_{\text{phos}}$  from  $\delta^{18}\text{O}_{\text{carb}}$ ”), measured and predicted  $\delta^{18}\text{O}_{\text{phos}}$  values fall close to a 1:1 relationship with minimal scatter ( $R^2 = 0.87$ ; Supplementary Fig. S2). The prediction shows a root-mean-square error of 0.56‰, approximately twice the measurement uncertainty of  $\delta^{18}\text{O}_{\text{phos}}$  (Supplementary Fig. S3). While this error is substantially larger than measurement uncertainty, it has negligible influence in the context of obtaining seasonal palaeotemperature information. Using the previously determined  $\delta^{18}\text{O}_{\text{phos}}$  prediction error (Supplementary Fig. S3), we generated random variants of one existing  $\delta^{18}\text{O}$  time series (AXL66; Supplementary Fig. S4) and evaluated the variability between inverse model outcomes for these within-error prediction alternatives (see “Predicting  $\delta^{18}\text{O}_{\text{phos}}$  from  $\delta^{18}\text{O}_{\text{carb}}$ ”; Supplementary Fig. S5). The root-mean-square error of extracted seasonal  $\delta^{18}\text{O}$  data points from the alternative generated data sets compared with the original AXL66 time series is 1.21. This is much smaller than the mean inverse model uncertainty of  $\sim 4.5$  (95% confidence interval).

### Oxygen isotope palaeoclimatology

Summer peak, winter trough, and mean  $\delta^{18}\text{O}_{\text{phos}}$  were extracted from sinusoidal curves to yield information about changes in summer, winter, and mean annual temperatures during the use of Axlor by late Neanderthals. Across Layers III, IV, and VI,  $\delta^{18}\text{O}$  values are similar for summer, winter, and mean values (Fig. 3) and can be seen in detail in Table 4.

The single individual analysed from Layer IV falls on the higher end of the range of summer  $\delta^{18}\text{O}$  values observed in the

other layers, but within the variability observed in Layer III. A lack of detectable isotopic difference (given the available sample size) between analysed layers is supported by a lack of statistically significant (0.05 alpha level) differences between layers in summer, winter, or mean  $\delta^{18}\text{O}$  ( $P_{\text{summer}} = 0.44$ ,  $P_{\text{winter}} = 0.98$ ,  $P_{\text{mean annual}} = 0.75$ ).

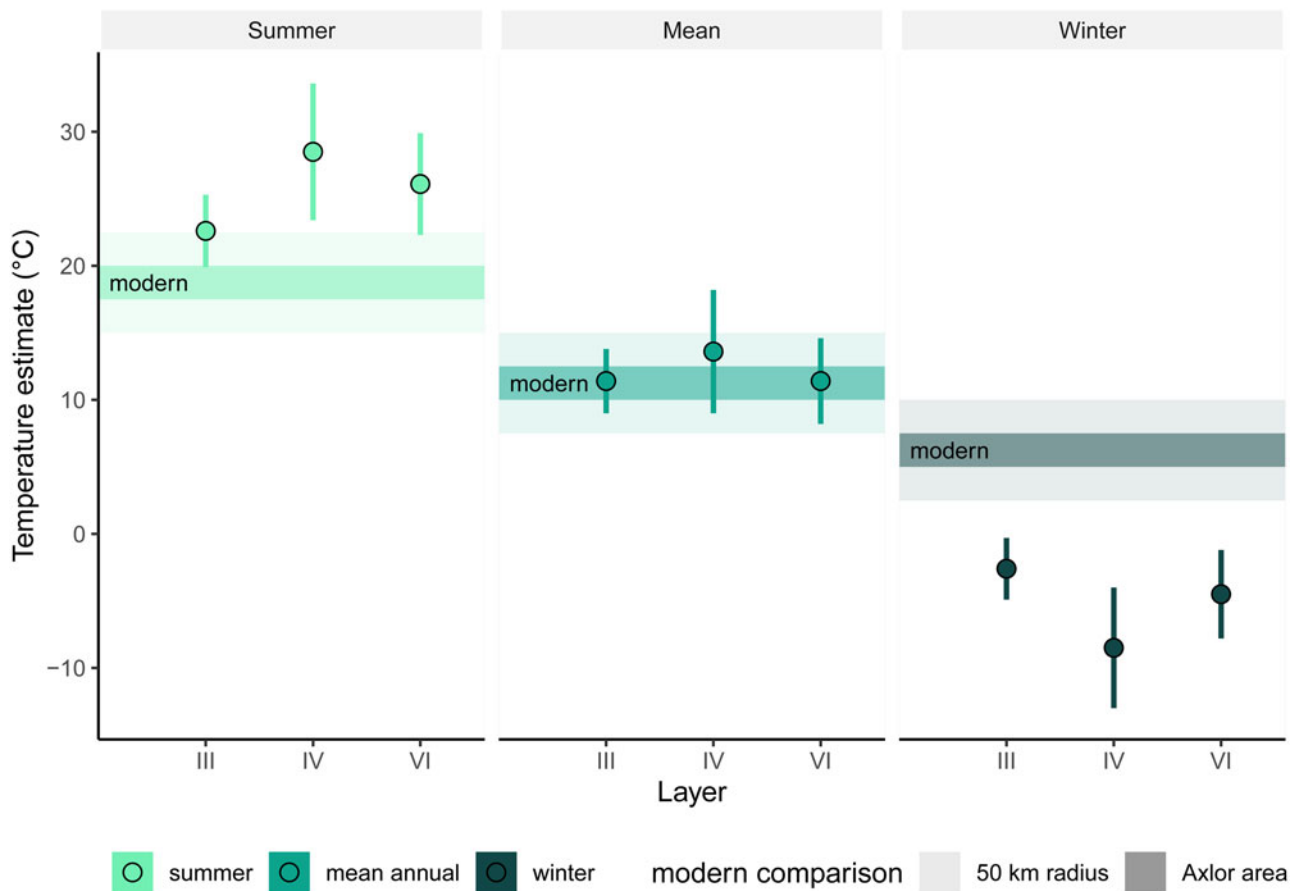
Given the limited amount of published  $\delta^{18}\text{O}$  data from *Bos/Bison* sp. that can serve as comparisons for our data, a comparison with other species is useful. To facilitate this, a conversion of enamel  $\delta^{18}\text{O}$  values to drinking water  $\delta^{18}\text{O}$  values is necessary, using a species-specific relationship. At the same time, this facilitates a comparison with modern measurements of  $\delta^{18}\text{O}$  in precipitation and environmental waters. The  $\delta^{18}\text{O}_{\text{dw}}$  for the Middle Palaeolithic *Bos/Bison* sp. from Axlor falls between  $\sim -4\text{‰}$  and  $-2\text{‰}$  in summer and at  $\sim -14\text{‰}$  in winter, with mean  $\delta^{18}\text{O}_{\text{dw}}$  between  $\sim -8\text{‰}$  and  $-7\text{‰}$  (Supplementary Fig. S6, Supplementary Table S2). To capture the pronounced orographic and isotopic variability in the vicinity of Axlor, modern comparison  $\delta^{18}\text{O}_{\text{precip}}$  data were estimated for the site location as well as the locations with lowest and highest elevations in a 50 km radius (Supplementary Fig. S6). For summer and annual means, the  $\delta^{18}\text{O}_{\text{dw}}$  estimates from the Axlor data fall within the local variability of modern-day  $\delta^{18}\text{O}_{\text{precip}}$ , while winter  $\delta^{18}\text{O}_{\text{dw}}$  estimates are lower than modern  $\delta^{18}\text{O}_{\text{precip}}$  values (Supplementary Fig. S6).

Results of seasonal and annual temperature estimations can be found in Supplementary Table S2. Mean annual palaeotemperature estimations for Layers III, IV, and VI fall close to modern-day conditions in the area of Axlor, with mean annual temperature estimates of  $\sim 12^\circ\text{C}$  and estimation uncertainties between  $2.4^\circ\text{C}$  and  $4.6^\circ\text{C}$  depending on the number of teeth analysed per layer (Fig. 4). Modern comparisons made here were founded on a spatial grid of temperature data based on observations between 1981 and 2010 provided by the Spanish State Meteorological Agency (AEMET, 2021). It should be noted that spatial variability in microclimate is very pronounced in the Cantabrian and Bizkaia region due to pronounced altitudinal gradients in close proximity to the coast. For this reason, we include as comparisons both temperature data for the site of Axlor and any areas within 50 km of the site. In contrast to mean annual temperatures, summer and winter palaeotemperature estimates fall outside the variability observed within 50 km of the site, with summer temperatures being higher and winter temperatures lower than modern-day

**Table 4.** Overview of summer peak, winter trough, and annual midpoint  $\delta^{18}\text{O}_{\text{phos}}$  values for each specimen, as well as the means and standard deviations summarised for each layer.<sup>a</sup>

Tooth	Layer	Summer $\delta^{18}\text{O}$	SD	Mean annual $\delta^{18}\text{O}$	SD	Winter $\delta^{18}\text{O}$	SD
AXL59	III	16.6	0.1	15.6	0.3	14.5	0.3
AXL60	III	17.7	0.4	16.4	0.4	15.1	0.1
AXL65	III	17.0	0.6	15.5	0.7	14.0	0.3
AXL66	III	19.1	0.4	17.4	0.6	15.6	0.4
AXL70	IV	19.3	0.3	17.1	0.4	15.0	0.3
AXL77	VI	16.7	0.4	15.2	0.4	13.8	0.2
AXL86	VI	18.4	0.2	17.2	0.3	16.0	0.2
	III	17.6	1.1	16.2	0.9	14.8	0.7
Mean	IV	19.3	—	17.1	—	15.0	—
	VI	17.5	1.2	16.2	1.4	14.9	1.6

<sup>a</sup>SDs of individual specimens represent the measurement uncertainty, while SDs of the layer summaries represent the SD of the mean.



**Figure 4.** Similar to raw oxygen isotope trends, reconstructed palaeotemperatures for summer, winter, and mean annual temperatures show little difference across the Middle Palaeolithic sequence of Axlor. Temperatures are close to and overlap with modern-day temperatures for summer and mean annual, but not winter, in the study region (based on data from the site location [dark bands] and a 50 km radius [light bands]) obtained from a spatial grid of temperature data based on observations between 1981 and 2010 provided by the Spanish State Meteorological Agency [AEMET, 2021].

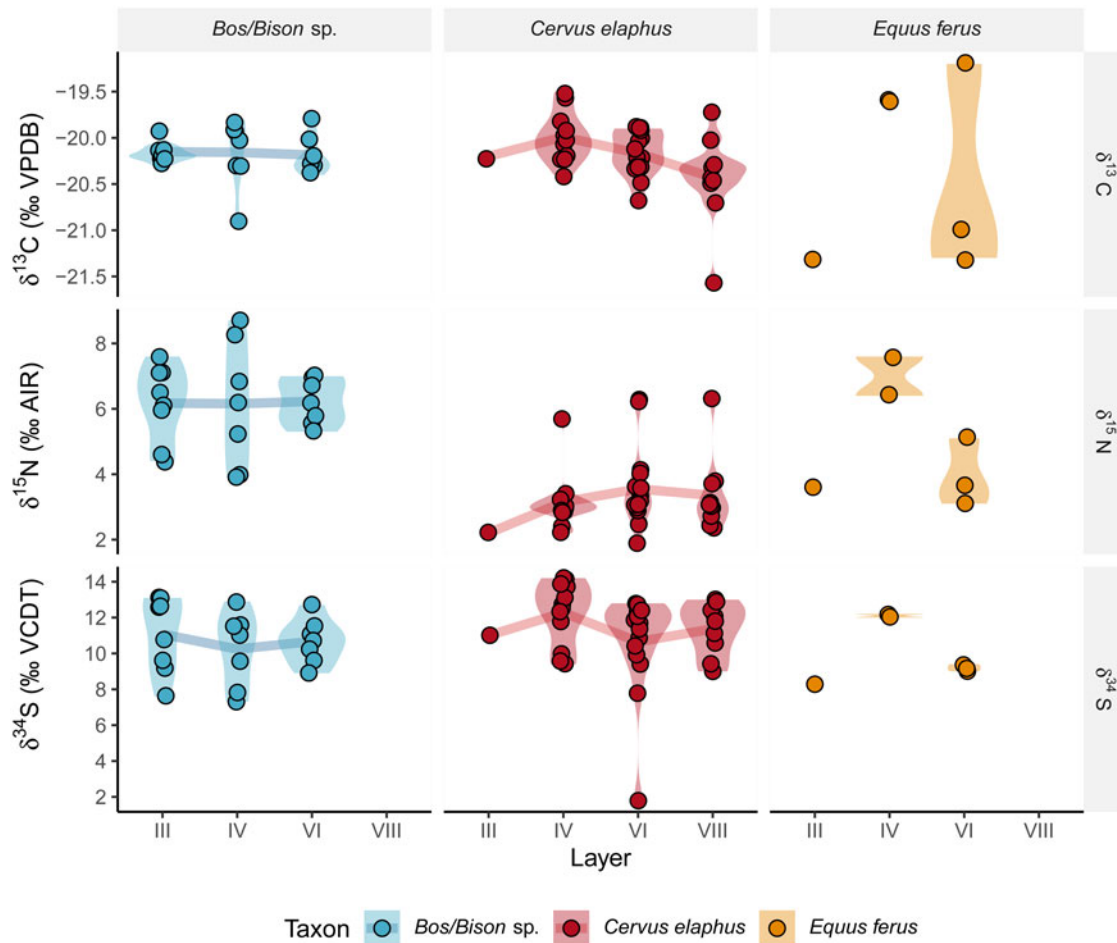
conditions (Fig. 4). This results in a stronger temperature seasonality estimated for the Middle Palaeolithic surroundings of Axlor compared with modern-day climates in the vicinity of the site. Temperature estimates are around  $\sim 26^{\circ}\text{C}$  in summer and  $-5^{\circ}\text{C}$  in winter, with uncertainties of  $\sim 3\text{--}5^{\circ}\text{C}$  depending on the number of teeth analysed per layer (Supplementary Table S2). Temperature seasonality appears slightly more pronounced in Layer IV, but only a single individual was analysed, so a meaningful difference compared with the other layers cannot be established. Overall, temperature results are stable across the three layers that were analysed, mirroring raw  $\delta^{18}\text{O}$  results.

### Carbon, nitrogen, and sulphur stable isotopes

The carbon, nitrogen, and sulphur isotopic composition of bone collagen was analysed for red deer (*Cervus elaphus*), large bovines (*Bos primigenius/Bison priscus*), and to a lesser extent, horses (*Equus ferus*). An overview of results by taxon and layer can be found in Figure 5. Collagen was well preserved across specimens ( $n = 56$  of  $N_{\text{total}} = 66$  with collagen yield  $>1\%$ ). Collagen extractions used for stable isotope analysis had C/N ratios between 3.0 and 3.4, consistent with *in vivo* collagen (Van Klinken, 1999). C/S and N/S ratios were  $640 \pm 110$  and  $199 \pm 34$ , respectively (mean and 1 SD), which is also consistent with good collagen preservation (Nehlich and Richards, 2009).

Results show little isotopic change in any of the isotopic systems and taxa across different layers at Axlor. In red deer, a slightly lower  $\delta^{13}\text{C}$  can be seen in Layer VIII compared with the other layers, but this is very strongly driven by a single outlier. If this outlier is excluded, analysis of variance does not detect any statistically significant differences between layers for either *C. elaphus* or *Bos/Bison* sp. in any of the isotopic systems ( $P_{B/B, \delta^{13}\text{C}} = 0.96$ ,  $P_{B/B, \delta^{15}\text{N}} = 1$ ,  $P_{B/B, \delta^{34}\text{S}} = 0.7$ ,  $P_{\text{deer}, \delta^{13}\text{C}} = 0.08$ ,  $P_{\text{deer}, \delta^{15}\text{N}} = 0.58$ ,  $P_{\text{deer}, \delta^{34}\text{S}} = 0.32$ ). The mean isotopic delta values for horses appear to change between layers; however, this could be a product of a small sample size, and more data would be needed to draw any conclusions about isotopic change. Due to the low number of individuals analysed for horses, no statistical tests comparing the layers were conducted.

It is interesting to note that *Bos/Bison* sp. and *C. elaphus* are comparable to each other in their carbon and sulphur stable isotope values, with means of  $\sim -20\text{‰}$   $\delta^{13}\text{C}$  and  $\sim 11\text{‰}$   $\delta^{34}\text{S}$ , respectively, but are noticeably distinct from each other in  $\delta^{15}\text{N}$ , with means of  $6.2\text{‰}$   $\delta^{15}\text{N}$  in *Bos/Bison* sp. and  $3.3\text{‰}$   $\delta^{15}\text{N}$  in *C. elaphus*, a separation that is consistent across all analysed layers (Figs. 5–7). Intra-individual variability is pronounced for all taxa and isotopic systems, with values ranging over a  $\sim 2\text{‰}$  spread in  $\delta^{13}\text{C}$ ,  $\sim 5\text{‰}$  in  $\delta^{15}\text{N}$ , and  $\sim 6\text{‰}$  in  $\delta^{34}\text{S}$  (excluding a *C. elaphus* outlier). Horses also show such large variability between individuals despite the small number of samples analysed here. Scatter



**Figure 5.** Carbon, nitrogen, and sulphur stable isotope values show little diachronic change for large bovines (*Bos/Bison* sp.), red deer (*Cervus elaphus*), or horses (*Equus ferus*). Intra-layer variability is generally high for all taxa and layers, but this is consistent across the sequence. Red deer are consistently lower in  $\delta^{15}\text{N}$  compared with the other taxa, but otherwise different taxa show consistent isotopic similarity. The lack of diachronic change indicates a similarity of environments and plant and herbivore ecosystems between the different Middle Palaeolithic layers analysed here. Data points represent individual analysed bone fragments, connecting lines depict the group mean, while shaded violin plots show the shape of data distribution. Depictions of group means were removed for horses, due to the very low sample size and consequent lack of robustness for any apparent diachronic trends.

plots of the different isotopic systems (Figs. 6 and 7) do not reveal any correlations between carbon, nitrogen, or sulphur stable isotope delta values of large bovines or red deer.

## DISCUSSION

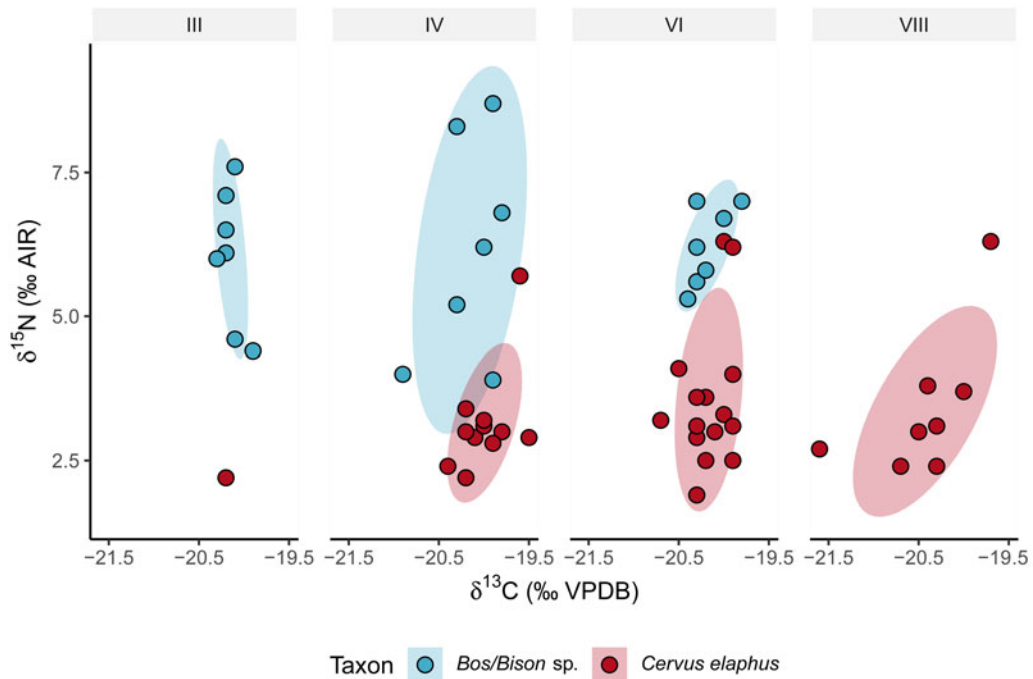
### Using combined carbonate-phosphate $\delta^{18}\text{O}$ time series for palaeoclimatology

The isotopic offset in  $\delta^{18}\text{O}$  between the carbonate and the phosphate moiety ( $\Delta^{18}\text{O}_{\text{carb-phos}}$ ) observed in *Bos/Bison* sp. tooth enamel samples in this study of  $8.7 \pm 0.7\text{‰}$  (1 SD) closely matches the average  $\Delta^{18}\text{O}_{\text{carb-phos}}$  offset in published modern comparative data of  $8.7 \pm 0.9\text{‰}$  (mean and 1 SD) (Bryant et al., 1996b; Pellegrini et al., 2011; Trayler and Kohn, 2016) as well as the theoretically predicted offset of  $\sim 8\text{‰}$  (Aufort et al., 2017). The regression equation in the Axlör sample between  $\delta^{18}\text{O}_{\text{carb}}$  and  $\delta^{18}\text{O}_{\text{phos}}$  differs slightly from published equations and the cross-study sample equation derived here from modern comparative data. Such small discrepancies are expected and commonly occur between different studies, due to interindividual or interpopulation differences and limited coverage of isotopic

space in different studies (Longinelli and Nuti, 1973; Bryant et al., 1996b; Iacumin et al., 1996; Martin et al., 2008; Pellegrini et al., 2011; Chenery et al., 2012; Trayler and Kohn, 2016). Overall, the good match between the Axlör samples and the theoretically and empirically documented relationship between  $\delta^{18}\text{O}_{\text{carb}}$  and  $\delta^{18}\text{O}_{\text{phos}}$  indicates that the enamel samples are well preserved and that it may be possible to predict  $\delta^{18}\text{O}_{\text{phos}}$  from  $\delta^{18}\text{O}_{\text{carb}}$  with reasonable accuracy and precision to reduce the amount of costly  $\delta^{18}\text{O}_{\text{phos}}$  measurements needed.

The consistency of  $\delta^{18}\text{O}_{\text{carb-phos}}$  between samples, individuals, species, or sites has been discussed at length in the literature, but predominantly in the context of diagenetic quality control (see section ‘‘Oxygen Isotope Analyses as a Proxy of Seasonal Climate’’). Particularly in this context, several studies caution against the use of  $\delta^{18}\text{O}_{\text{carb-phos}}$  as a fixed numeric indicator of preservation given the level of variability even between samples of the same individual (e.g., Pellegrini et al., 2011). However, an acceptable level of noise in this relationship differs depending on how data are used.

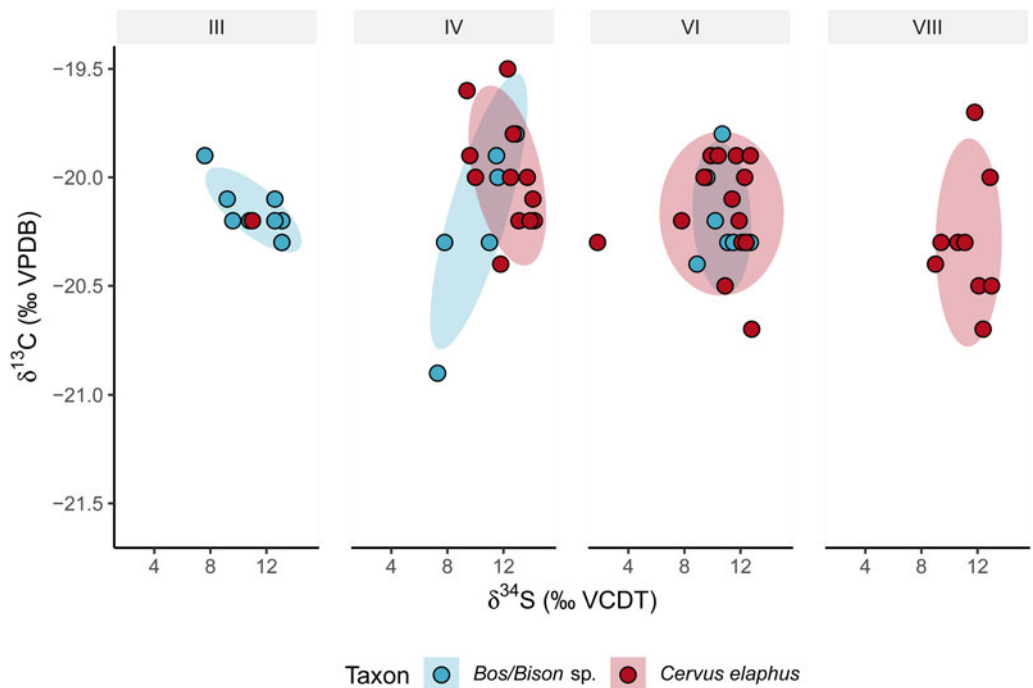
In this study, we investigated specifically the use case of predicting  $\delta^{18}\text{O}_{\text{phos}}$  from  $\delta^{18}\text{O}_{\text{carb}}$  for a subset of samples in a sequentially sampled  $\delta^{18}\text{O}$  time series, which serves as the input for



**Figure 6.** A plot of carbon and nitrogen stable isotope values of *Bos/Bison* sp. and *Cervus elaphus* shows that the two herbivore taxa occupy distinct nitrogen isotopic spaces, while being very similar in  $\delta^{13}\text{C}$ . This suggests a different feeding ecology or habitat use between these species, which remains stable across the layers analysed here. Data points represent measurements from individual bone fragments, while ellipses depict 1 SD (68%) of the data spread.

seasonal inverse modelling and subsequent palaeotemperature estimation of summer and winter temperatures (see sections “Oxygen Isotope Analyses as a Proxy of Seasonal Climate” and “Seasonal Palaeotemperature Estimation”). Using cross-validation

in samples with both  $\delta^{18}\text{O}_{\text{phos}}$  and  $\delta^{18}\text{O}_{\text{carb}}$  measurements, it has been possible to determine that prediction uncertainty of  $\delta^{18}\text{O}_{\text{phos}}$  is nonnegligible for raw (unmodelled) stable isotope data, approximately twice the measurement uncertainty. However, this



**Figure 7.** A plot of carbon and sulphur stable isotope values of *Bos/Bison* sp. and *Cervus elaphus* shows that these taxa heavily overlap in these isotopic systems. While the baseline variability in sulphur isotope delta values in Bizkaia is not well understood, a similarity in this isotopic system suggests that *Bos/Bison* sp. and *Cervus elaphus* did not systematically occupy spatially distinct habitats, particularly with regards to distance from the coast. Data points represent measurements from individual bone fragments, while ellipses depict 1 SD (68%) of the data spread.



uncertainty becomes much less significant when looking at the outcome of the inverse model. When reconstructing summer and winter palaeotemperatures, the summer peak and winter trough  $\delta^{18}\text{O}$  values are extracted after inverse modelling, and only these peak and trough areas are ultimately used as input for palaeotemperature estimation (see section “Seasonal Palaeotemperature Estimation”). The intermediate areas of the sinusoidal  $\delta^{18}\text{O}$  curve do influence the outcome of the inverse modelling procedure but are not themselves immediate areas of interest. In this approach, actual  $\delta^{18}\text{O}_{\text{phos}}$  measurements were conducted on samples in the summer peak and winter trough areas. This apparently sufficiently serves to anchor these parts of the  $\delta^{18}\text{O}$  curve and protects areas of interest for palaeotemperature estimation from being substantially influenced by the uncertainty of the  $\delta^{18}\text{O}_{\text{phos}}$  to  $\delta^{18}\text{O}_{\text{carb}}$  prediction. We simulated the effect of prediction uncertainty on  $\delta^{18}\text{O}$  curve shape and inverse model outcomes by generating alternative  $\delta^{18}\text{O}$  time series that represent possible variations of the  $\delta^{18}\text{O}$  curve within the prediction uncertainty of  $\delta^{18}\text{O}_{\text{phos}}$  from  $\delta^{18}\text{O}_{\text{carb}}$  and compared the extracted seasonal  $\delta^{18}\text{O}$  values of the inverse model outcome between each trial. Very little difference is noted between the summer and winter  $\delta^{18}\text{O}$  values extracted from each trial, with variability less than half of the inverse model 95% confidence interval. Therefore, it can be concluded that the impact on summer and winter temperatures estimated from  $\delta^{18}\text{O}$  curves, where intermediate (non-peak) curve areas have been predicted from  $\delta^{18}\text{O}_{\text{carb}}$ , is negligible. This validates the use of a combination of the two measurement types that retains both robustness of palaeotemperature estimates and enables a comparatively inexpensive workflow.

However, this conclusion applies specifically to  $\delta^{18}\text{O}$  time-series data that include actual  $\delta^{18}\text{O}_{\text{phos}}$  measurements in the peak and trough areas—the relevant sections for seasonal palaeoclimatic reconstructions. As would be expected, it can be seen in the inverse models of alternative simulated  $\delta^{18}\text{O}$  curves (Supplementary Figs. S3 and S4) that predicted (non-measured) curve areas show significantly more variability between trials than the curve areas that are “anchored” by actual measurements. Consequently, one should be cautious when using completely predicted  $\delta^{18}\text{O}_{\text{phos}}$  curves, and we recommend that any  $\delta^{18}\text{O}_{\text{phos}}$  measurements should be taken from peak and trough areas. In this study, it is demonstrated that three  $\delta^{18}\text{O}_{\text{phos}}$  measurements around each peak or trough area are necessary to sufficiently anchor these curve areas against excessive influence of the prediction uncertainty. Finally, systematic lagging sometimes proposed for  $\delta^{18}\text{O}_{\text{carb}}$  vs  $\delta^{18}\text{O}_{\text{phos}}$  time series has not been consistently observed (Pellegrini et al., 2011; Traylor and Kohn, 2016), but small variations in the location of the most extreme  $\delta^{18}\text{O}$  values commonly exist between time series of the two fractions. Thus, using approximately three values rather than only individual samples for each peak or trough is recommended.

It should be noted that these conclusions are only valid in the case of inverse modelled sequential  $\delta^{18}\text{O}$  series, but not necessarily for palaeotemperature estimates from unmodelled time series or bulk samples, as our arguments rest on the preservation of the  $\delta^{18}\text{O}$  seasonal curve shape through the inverse modelling procedure due to the use of strategic  $\delta^{18}\text{O}_{\text{phos}}$  anchor points. In case studies where  $\delta^{18}\text{O}_{\text{phos}}$  values are completely predicted and/or unmodelled, it is our opinion that a substantially larger number of individuals would need to be analysed per archaeological layer to offset the level of noise introduced by the  $\delta^{18}\text{O}_{\text{carb}}$  to  $\delta^{18}\text{O}_{\text{phos}}$  prediction uncertainty (for further discussion of bulk samples, see Pryor et al., 2014; Skrzypiek et al., 2016).

## Reconstructing the environmental and ecological setting of the Middle Palaeolithic at Axlor

### Chronology

Layers III to VIII of Axlor have previously been suggested to have formed during early MIS 3 and earlier, but the Beta dates generated from the site were produced without ultrafiltration removal of possible contaminants—the standard method currently applied in Middle Palaeolithic sites with a chronology close to the limit of the radiocarbon—and lack provenance information within the site (Ríos-Garaizar, 2017; Gómez-Olivencia et al., 2018; Marín-Arroyo et al., 2018; González-Urquijo et al., 2021; Sánchez Hernández, 2021; Table 1). An additional two infinite radiocarbon ages from Layer IV, produced by Marín-Arroyo et al. (2018), already indicated that the sequence may be older than previously suggested. This is supported again in this study by new data produced on ultrafiltered collagen from Layer III, which falls into early MIS 3. Of the dates that have been obtained from Layer D (equivalent to Layer IV) (e.g., Beta-203,107 and Beta-225,486; González-Urquijo et al., 2021) the former overlaps with the new age for Layer III presented here, while the latter provides an infinite age of >43,000 radiocarbon years. However, due to the concerns with the Beta dates mentioned earlier, we consider the ORAU dates to be more robust. With the upper Middle Palaeolithic sequence falling into early MIS 3 according to the newly presented radiocarbon date, an age of at least very early MIS 3 but possibly MIS 4 or older for the underlying layers is more likely. New data might confirm an older attribution for these lower levels VII and VIII corresponding to MIS 5c (Sánchez Hernández, 2021). However, additional studies of the site chronology, for instance using luminescence or electron spin resonance dating, are necessary to clarify the age of the lower part of the Middle Palaeolithic sequence of this important site.

### Palaeoclimate

While temperature is the predominant driver of precipitation  $\delta^{18}\text{O}$  values in northern Spain, other secondary impacts on  $\delta^{18}\text{O}_{\text{precip}}$ , and therefore  $\delta^{18}\text{O}_{\text{enamel}}$ , such as aridity, rainfall amount, differences in drinking water sources, changes in atmospheric circulation, or spatial variability from altitudinal gradients, exist as well. As discussed previously (see section “Oxygen Isotope Analyses as a Proxy of Seasonal Climate” and Supplementary Text 1), we argue that circulation changes likely play a minor role in this case study, but other factors should be examined before making climatic inferences.

In  $\text{C}_3$  ecosystems,  $\delta^{18}\text{O}$  and  $\delta^{13}\text{C}$  can both be impacted by aridity and rainfall amount, a positive correlation between the two tracers is normally observed in settings where aridity and rainfall amount are the main drivers of both isotopic systems (Drucker et al., 2008; Diefendorf et al., 2010; Feranec et al., 2010; Richards et al., 2017). In the Axlor *Bos/Bison* sp. samples, however, neither annual means nor sequential data of  $\delta^{18}\text{O}$  and  $\delta^{13}\text{C}$  systematically correlate with each other (Supplementary Figs. S7 and S8), indicating that aridity is not a major driver of  $\delta^{18}\text{O}$  and  $\delta^{13}\text{C}$  in these individuals. Palaeoclimatic reconstruction could also be biased by *Bos/Bison* sp. accessing water from sources that are not isotopically representative of local precipitation. Pronounced isotopic deviation from seasonally variable local precipitation occurs most commonly in waterbodies such as large lakes, large rivers, snowmelt, or ground water, as these undergo substantial evaporation, are significantly time averaged, introduce

a time lag, or transport water over large distances (Gonfiantini, 1986; Darling et al., 2003; Gat, 2010; Halder et al., 2015; Pederzani and Britton, 2019). Rivers in the study area are part of the watershed of the Ibaizabal River and are typically relatively small and short, in the range of tens of kilometres (Ocio et al., 2016). River water in the study region is, therefore, unlikely to be significantly time averaged, but rather is mostly fed from relatively local precipitation. While two lakes exist to the south of the site, the regular use of drinking water from substantially seasonally buffered water sources, such as larger lakes or ground water, is unlikely, given the seasonally variable  $\delta^{18}\text{O}$  time-series data in all sampled teeth from Axlor. Due to the presence of higher-altitude areas surrounding Axlor, river water in the watershed likely includes some input of precipitation from a higher elevation, which is characterised by lower  $\delta^{18}\text{O}$  values. For this reason, we account for this in our comparisons with modern water isotope data by including  $\delta^{18}\text{O}_{\text{precip}}$  estimates from high-elevation locations to represent as much as possible the local variability in  $\delta^{18}\text{O}$  of environmental waterbodies (Supplementary Fig. S6). Overall, we conclude that *Bos/Bison* sp.  $\delta^{18}\text{O}$  values at Axlor are a useful proxy of palaeotemperatures, but it is necessary to take into account that local waters imbibed by animals ranging in the site vicinity likely included some higher-elevation precipitation. It should be noted that there was also a presence of small cirque glaciers in the eastern Cantabrian Mountains during the Quaternary (Serrano et al., 2017), which could have supplied low  $\delta^{18}\text{O}$  glacial melt into the local watersheds. Potential low  $\delta^{18}\text{O}$  inputs, therefore, need to be considered when making comparisons with modern  $\delta^{18}\text{O}$  values of precipitation rather than river samples, as is the case in this study.

Oxygen stable isotope values of *Bos/Bison* sp. tooth enamel from Axlor are similar in all analysed layers (III, IV, and VI), indicating a comparability in temperature conditions between the different deposits (Fig. 3). The number of analysed individuals is relatively small, particularly in Layer IV. However, based on the available data, a consistency of climatic conditions between the different occupations is indicated. At the same time, both conversions to palaeotemperatures and comparisons with other published oxygen isotope data indicate that mean annual climatic conditions at Axlor were characterised by relatively high temperatures, akin to modern-day climates during the Middle Palaeolithic phases that are represented in the archaeological sequence, while temperature seasonality appears to have been more pronounced but stable across the different occupations.

The results from the temperature conversion resemble modern-day temperatures close to the site for mean annual conditions, while summer and winter palaeotemperature estimates fall higher and lower than modern-day, respectively (Fig. 4). This creates a more pronounced temperature seasonality for the Pleistocene sample represented here. It should be noted that summer  $\delta^{18}\text{O}_{\text{dw}}$  estimates overlap within error with current summer  $\delta^{18}\text{O}_{\text{precip}}$  values (Supplementary Fig. S6). This may indicate that the  $\delta^{18}\text{O}_{\text{precip}}-T_{\text{air}}$  relationship in the Cantabrian region today has a lower slope than in the broader European data set used for palaeotemperature estimation in this study. Indeed  $\delta^{18}\text{O}_{\text{precip}}$  data from Santander indicate a relatively low  $\delta^{18}\text{O}_{\text{precip}}-T_{\text{air}}$  slope of  $\sim 0.3$  (IAEA/WMO, 2020). Therefore, summer palaeotemperatures in our study may perhaps best be described as similar to modern day or higher, while winter values are lower than modern day for both  $\delta^{18}\text{O}_{\text{dw}}$  and temperature estimates, indicating a stronger temperature seasonality in the Pleistocene sample. A possible contribution of glacial melt from

Quaternary glaciers in the Cantabrian Mountains (Serrano et al., 2017) means that some palaeotemperatures may be underestimates of actual local temperatures. However, glacial melt and snowmelt would be expected to mostly impact spring and summer surface waters, when temperatures are higher and increase melting of snow and ice. An underestimation of winter temperatures from this effect is therefore not expected. We therefore conclude that most likely a higher temperature seasonality, mostly driven by lower winter temperatures, characterised the climate of the Middle Palaeolithic occupations of Axlor.

A higher temperature seasonality may have been driven by different orbital configuration, resulting in higher insolation during summer and lower insolation during winter. Several phases of orbital configurations producing stronger seasonality of insolation, and thus temperature, fall into the late Pleistocene, for instance, at  $\sim 60$  ka BP and  $\sim 85$  ka BP (Laskar et al., 2004). At the same time, the level of the Cantabrian Sea was lower than today during MIS 3 and MIS 4 as well as most of MIS 5 (Ballesteros et al., 2017), meaning that Axlor Cave was situated further inland at the time, which could have contributed to a more continental climate. In current climate conditions, the area around Axlor exhibits pronounced differences in microclimate over short distances, with the coastal areas being substantially wetter and with less pronounced seasonality, while southern valleys experience less precipitation and a temperature seasonality that is up to  $6^\circ\text{C}$  higher than at the coast (Pellitero et al., 2019). At the same time, these microclimatic differences over relatively short distances may mean that palaeoclimatic reconstructions could also relate to prey procurement in slightly different areas and microclimates than were present directly at the site. While we made efforts to capture the local isotopic variability in our comparisons of archaeological and modern data, a use of more southern valleys or lower-elevation areas by hunted *Bos/Bison* sp. cannot be fully excluded. Indeed, it has been previously proposed that *Bos/Bison* sp. game may have been procured at some distance from the site, due to the steep terrain around the cave (Ríos-Garaizar and Moreno, 2015).

For mean annual conditions, a similarity to Holocene climatic conditions is also supported by more direct comparisons of oxygen stable isotope data. Mean annual  $\delta^{18}\text{O}_{\text{dw}}$  values also match those reconstructed for residents of a twelfth-century CE site located  $\sim 15$  km from Axlor in a neighbouring valley (Guede et al., 2020). Estimates of  $\delta^{18}\text{O}_{\text{dw}}$  for human tooth enamel from this site range from  $\sim -5\text{‰}$  to  $-10\text{‰}$ . Strontium stable isotope analyses of the medieval human remains showed use of various areas in the vicinity of the site by the site inhabitants, making their oxygen stable isotope values more broadly representative of the isotopic variability of drinking water sources in the site area. A match of the Axlor data with these  $\delta^{18}\text{O}_{\text{dw}}$  values further underscores a climatic similarity with the relatively mild Holocene climatic conditions of the twelfth-century CE.

Comparisons with other herbivore oxygen stable isotope data also show that Axlor *Bos/Bison* sp. oxygen isotope values match well with values for warmer phases of the last glacial period. The  $\delta^{18}\text{O}$  values from Axlor are similar to those generated from *Bos/Bison* sp. remains from the MIS 3 and MIS 4 layers of La Ferrassie in southwest France (mean  $\delta^{18}\text{O}_{\text{phos}} = 16.3 \pm 0.7\text{‰}$ , mean summer  $\delta^{18}\text{O}_{\text{phos}} = 17.9 \pm 0.8\text{‰}$ , mean winter  $\delta^{18}\text{O}_{\text{phos}} = 14.2 \pm 1.0\text{‰}$ ; Pederzani et al., 2021). Our reconstructed  $\delta^{18}\text{O}_{\text{dw}}$  values are also slightly higher, but within error of  $\delta^{18}\text{O}_{\text{dw}}$  values calculated from  $\delta^{18}\text{O}_{\text{carb}}$  values of horse tooth enamel from the Mousterian layer 20E (undated MIS 3) of El Castillo (calculated

in this study as  $-9.8 \pm 2.8\%$ ), a Cantabrian site located  $\sim 150$  km west of Axlor with a similar distance to the coast (Jones et al., 2018). We used only the individual CAS61 as a comparison, as the other individuals from El Castillo do not show clearly sinusoidal  $\delta^{18}\text{O}$  curves. Axlor  $\delta^{18}\text{O}$  mean annual values are  $\sim 3\%$  lower than a *Bos/Bison* sp. sample from the approximately contemporary site of Valdegoba Cave near Burgos ( $\delta^{18}\text{O} = -8.6 \pm 0.9\%$ ) (Feranec et al., 2010). This difference closely matches the difference between the two localities in modern-day precipitation  $\delta^{18}\text{O}$  ( $\sim -6\%$  in Axlor [Bowen and Revenaugh, 2003] and  $\sim -9\%$  in Burgos [IAEA/WMO, 2020]), showing again that our results conform with the expectations for a warm-phase Middle Pleniglacial climate. The fact that this mainly hydrotopographically driven spatial difference in  $\delta^{18}\text{O}$  is well reflected in enamel samples also further supports the effectiveness of using  $\delta^{18}\text{O}_{\text{enamel}}$  as a proxy for water  $\delta^{18}\text{O}$ . The observed lack of correlation between  $\delta^{18}\text{O}$  and  $\delta^{13}\text{C}$  in the *Bos/Bison* sp. enamel carbonates (Supplementary Fig. S8) or  $\delta^{13}\text{C}$  and  $\delta^{15}\text{N}$  in bone collagen in *Bos/Bison* sp. or *Cervus elaphus* (Fig. 6) additionally suggests that relatively high  $\delta^{18}\text{O}$  are indeed more likely related to warm mean annual temperature conditions rather than an aridity effect.

The similarity in  $\delta^{18}\text{O}$  data between Axlor and La Ferrassie indicates that comparable conditions with warm mean annual temperatures characterised both the southwest of France and the northern Spanish coast during the Middle Pleniglacial. Under current climatic conditions in the southwest of France, mean annual temperatures are also similar to those in the Basque Country. However, the temperature seasonality is currently higher in France compared with the weather station closest to Axlor. The similarities between the Axlor and La Ferrassie data indicate that the archaeological deposits at Axlor were formed during more seasonal climatic conditions than today, creating a reduced climate gradient with the southwest of France. Whether Neanderthals occupied Axlor during the winter season is unknown, but seasonality studies in the Cantabrian region suggest that a number of sites were occupied in various seasons or year-round, while climatic and herbivore ecology were stable throughout the Middle Palaeolithic (e.g., Sánchez-Hernández et al., 2019). Lower winter temperatures likely influenced the growing season and availability of particular plant resources especially from forested habitats, but studies of dental calculus have shown that Neanderthals living in more open, colder environments incorporated a variety of plant taxa into their diet, including grass seeds, with similar dietary breadth as individuals living in warmer, more closed environments (Power et al., 2018). At the same time, climatic conditions at Axlor appear to have supported a rich and stable herbivore resource base, which likely formed an important part of Neanderthal subsistence (see section “Palaeoenvironment and Palaeoecology”).

It should be noted that the faunal assemblage from the Barandiaran excavation, which was used here, was recovered using an excavation methodology following artificial spits, likely leading to some imprecision in assigning faunal material to individual layers (Ríos-Garaizar, 2012; Gómez-Olivencia et al., 2018). While not ideal, we argue that the pattern of relatively homogeneous climatic conditions observed in the isotopic results is unlikely to exclusively be artefacts of the excavation methodology. If strong climatic differences had originally existed, but had been obscured by a mixing of the material between layers, a diachronically more homogeneous pattern but with a large intra-layer  $\delta^{18}\text{O}$  variability would be expected. Because the intra-layer variability in  $\delta^{18}\text{O}$  is not unusually high (e.g., see the comparison with

data from La Ferrassie), a strong temporal mixing of climatically different phases seems unlikely. While the other isotopic tracers show larger intra-layer variability, this pattern is typical for other sites in the region (Jones et al., 2018, 2019; Marín-Arroyo et al., 2020).

Overall, our results indicate that the late Neanderthal occupations analysed here took place during mild mean annual climatic conditions that are similar between the different occupations analysed. Due a lack of clear chronological information for some archaeological layers at Axlor, we cannot precisely pinpoint the mechanism behind this climatic similarity, but several scenarios would be consistent with the isotopic data:

1. The Bizkaia region was characterised by relatively mild climates throughout the time when Neanderthals occupied Axlor Cave, and climatic oscillations were less pronounced than in other parts of Europe.
2. Late Pleistocene time periods of colder climate are not represented in the material accumulation of Layers III, IV, and VI, because the site was not used by Neanderthals when climatic conditions were harsher. Instead Layers III, IV, and VI represent repeated occupations during warmer phases/interstadials.

A buffering of some of the more extreme environmental fluctuations of the late Pleistocene has been suggested previously for the Cantabrian region (e.g., Jones et al., 2018). Long-term climatic records from the region do show evidence of millennial-scale climatic change, including episodes of colder, drier climates in MIS 5–3 (e.g., Sánchez Goñi et al., 2013). For example, a speleothem from Cueva de las Perlas,  $\sim 100$  km west of Axlor, shows a more arid episode around 51–46.5 ka, expressed as growth rate changes (Deeprise, 2018). On the other hand, there are also examples of other terrestrial palaeoclimatic records that are not specifically tied to hominin activity, such as the micromammals from Cueva del Conde in Asturias showing a relative stability in climate in northern Spain during MIS 3 (e.g., López-García et al., 2011).

Due to the presence of sterile layers in the sequence of Layer III and below, an intermittent occupation of the site seems likely (Gómez-Olivencia et al., 2018), but additional chronological clarification and site-specific climatic information is needed to test whether this pattern is related to disuse of the site during unfavourable climatic conditions or not. Similarly, due to the lack of absolute chronological information for much of the Middle Palaeolithic sequence of Axlor, it is currently not possible to determine how much time is represented in these deposits. Nonetheless, some observations about the climatic framework for Neanderthal behaviour can be made within the context of the site itself. Layers III–V of Axlor have previously been proposed to have formed during less favourable climatic conditions, based on the presence of some reindeer (*Rangifer tarandus*) specimens, mainly in Layer IV, and the presence of Quina Mousterian lithic technology (Gómez-Olivencia et al., 2014; Ríos-Garaizar, 2017). However, it should be kept in mind that the faunal spectrum of these layers is generally dominated by red deer and aurochs/bison, which are erythermic species well adapted to both warm and cold conditions (Ríos-Garaizar and Moreno, 2015). In contrast, the number of reindeer specimens found at the site is very low ( $n = 21$  for all deposits), and their generally sparse presence in the Cantabrian region suggests that the area fell towards the edge of the reindeer biogeographic range



(Gómez-Olivencia et al., 2014). Additionally, given the climatic and ecological flexibility of larger mammals such as reindeer, we believe that the presence of low numbers of reindeer in Layers III–V are still compatible with the stable isotopic data from *Bos/Bison* sp., which suggest generally mild mean annual temperatures in all analysed deposits. It is also possible that the presence of reindeer was supported by lower winter temperatures, as reconstructed in our data set. However, whether reindeer migrated to the Cantabrian region in winter or were present year-round is currently unknown (Gómez-Olivencia et al., 2014), so this point warrants further investigation. On the other hand, it is also possible that accumulations of reindeer and larger bovines originate from climatically different short occupations that have been combined through the palimpsest character of the site, which is thought to represent repeated short and intensive occupations (Ríos-Garaizar, 2017). A more detailed investigation of the spatial distribution of reindeer bones within the site would help to make a stronger case one way or the other, but given that  $\delta^{18}\text{O}$  variability between different *Bos/Bison* sp. individuals assigned to one stratigraphic unit at Axlor is comparable to that of other Middle Palaeolithic sites, we suggest that there is at present no indication of an unusually pronounced palimpsest with accumulation of *Bos/Bison* sp. individuals across multiple climatic phases into single stratigraphic units.

#### Palaeoenvironment and palaeoecology

The lack of diachronic changes seen in the carbon and nitrogen isotopic composition of *Cervus elaphus* and *Bos/Bison* sp. bone collagen (Fig. 5) indicates a stability of feeding ecology and of the plant ecosystem throughout the analysed layers. This matches with the climatic homogeneity indicated by stable  $\delta^{18}\text{O}$  of *Bos/Bison* sp. tooth enamel discussed in the previous section, drawing overall a picture of climatic, environmental, and ecological homogeneity between the different Middle Palaeolithic occupations of the site. A stability in the geospatially variable sulphur stable isotope system (Fig. 5) might also indicate that animals continued to range over—and be hunted in—similar sulphur isozones through time. The range of sulphur isotope values represented within taxonomic and layer groups is comparatively large (Fig. 5) compared with the common 2–4‰ intra-individual variability observed in modern studies of herbivores from a single population or at other Palaeolithic archaeological sites (e.g., Nehlich, 2015; Jones et al., 2018; Reade et al., 2020). Thus, an exploitation of a relatively broad variety of isotopically distinct habitats by both animals and perhaps hominins throughout the Middle Palaeolithic occupations of Axlor seems likely. Baseline geospatial variability in  $\delta^{34}\text{S}$  is relatively poorly understood in the northern Spanish coastal region, but  $\delta^{34}\text{S}$  values are likely to at least vary with distance from the coast, where higher  $\delta^{34}\text{S}$  values prevail closer to the coast (McArdle et al., 1998; Nehlich, 2015; Bataille et al., 2021). Based on comparison with modelled  $\delta^{34}\text{S}$  values, coastal  $\delta^{34}\text{S}$  could be ~4–6‰ higher than in valleys further inland, and  $\delta^{34}\text{S}$  values of fauna at Axlor seem to not capture isozones that are directly adjacent to the coastline (Bataille et al., 2021). However, it should be noted that the isoscape by Bataille et al. (2021) is based on a relatively small number of samples from Holocene archaeological contexts, and baseline values are likely to have been different in the Pleistocene due to climatic and environmental differences. Therefore, more data are necessary to confirm this and to clarify the geographic scale that is associated with the relatively large range of different  $\delta^{34}\text{S}$  values seen in the fauna at Axlor. As the local and regional  $\delta^{34}\text{S}$  variability is largely

unknown at the moment, this higher variability may also be related to a relatively high degree of baseline  $\delta^{34}\text{S}$  heterogeneity in a mosaic landscape characterised by deep narrow valleys that may shield valley floors from sea spray effects despite relative proximity to the coast.

At the same time, the range of isotopic values represented in the nitrogen isotopic system is also quite large, while carbon isotope values vary less strongly within each taxonomic group (Fig. 5). The pronounced within-taxon and within-layer variability in  $\delta^{15}\text{N}$  may indicate that a range of different environments or portions of the plant ecosystem were exploited by the herbivore taxa analysed here. Such pronounced variability could be consistent with two scenarios:

1. Each layer represents a relatively pronounced temporal palimpsest, and animals in each stratigraphic unit lived under a variety of environmental conditions, or taxa fulfilled a different ecological role in different time periods.
2. Isotopic variability in herbivores reflects a pronounced spatial variability of stable isotope values in the plant ecosystem due to the presence of a mosaic landscape with heterogeneous vegetation structure.

Large intra-layer isotopic variability has been previously noted at other Cantabrian archaeological sites, but due to a lack of data from more directly climatically driven tracers such as oxygen stable isotope values, the cause for this could previously not be clearly determined (Jones et al., 2018, 2019; Marín-Arroyo et al., 2020). Here, the intra-layer variability in the oxygen isotopic composition of *Bos/Bison* sp. tooth enamel is not uncommonly large in any of the analysed layers, but is instead comparable with sites in other regions, such as La Ferrassie (Pederzani et al., 2021), that also do not exhibit such large intra-layer variability in other isotopic systems. Consequently, it appears unlikely that the temporal palimpsest of the Axlor archaeological deposits is solely responsible for the large range of values observed in nitrogen and sulphur stable isotope values. Animals should originate from a large variety of climatic contexts and show high  $\delta^{18}\text{O}$  variability under such a scenario. Therefore, the combination of the multiple types of stable isotope data here lends more support to the presence of a relatively heterogeneous, isotopically variable, mosaic landscape that offered a breadth of vegetation types and habitats during the late Pleistocene.

At the same time, our data also shed light on the feeding ecology of different herbivore taxa. *C. elaphus* show lower  $\delta^{15}\text{N}$  than *Bos/Bison* sp. in all analysed layers (Fig. 6), indicating that they consistently occupied a different isotopic niche. This could be caused by these taxa either fulfilling a different ecological role with different feeding behaviours but within the same or similar landscapes and habitats, or exploiting spatially distinct landscapes. Higher  $\delta^{15}\text{N}$  values of *Bos/Bison* sp. could be linked to a higher proportion of grass in the diet, compared with the more browsing *C. elaphus*, as higher  $\delta^{15}\text{N}$  values have been observed in grasses and forbs compared with shrubs or trees in arctic and peri-arctic environments (Drucker, 2022). A selective feeding in drier microenvironments may also be possible, but the differences between large bovines and red deer do not map onto any differences in sulphur stable isotopes (Fig. 7). Therefore, a spatial separation of the two taxa seems less likely. Thus, an explanation in relation to feeding ecology seems more likely, with the two species using (within isotopically detectable bounds) the same ranges but occupying separate isotopic feeding niches, likely along a



grazer–browser spectrum. The consistency of how these herbivores relate to each other in their isotope ecology also supports the interpretation that Neanderthals occupying Axlor did so within a relatively consistent climate, environment, and ecosystem.

## CONCLUSIONS

Oxygen, carbon, nitrogen, and sulphur stable isotope analysis of macromammal remains, with evidence of hominin manipulation, provides a snapshot of climates, environments, and ecosystems in the surroundings of Axlor Cave. Climatic and environmental conditions appear to have been remarkably stable across different punctuated episodes when Neanderthals inhabited the site during the late Pleistocene. Oxygen stable isotope values from large bovine tooth enamel indicate that mean annual temperatures were mild and similar to modern-day climates in the region, while winter temperatures were lower and temperature seasonality more pronounced (but stable) across occupations. A similarity in the environment across layers is also indicated by carbon and nitrogen isotope ratios in herbivore bone collagen. Herbivore taxa such as red deer and aurochs/bison appear to have occupied slightly different feeding niches, with large bovines likely consuming more grass, but their relationship to each other is consistent in all layers, indicating niche partitioning but also niche conservation through time. Likewise, noticeable changes in spatial ecology are not observed, as indicated by homogeneous sulphur stable isotope values in all analysed layers. Intra-layer ranges in sulphur and nitrogen stable isotope values are high, a phenomenon also observed at other sites in the region. Due to a lack of such large variability in the oxygen isotope sample, it is most plausible that large ranges in sulphur and nitrogen stable isotopes are driven by the presence of isotopically diverse habitats in mosaic environments within the complex topography of the site surroundings, rather than by the effects of the temporal palimpsest character of the archaeological deposits.

The somewhat unclear chronology of the site and a lack of naturally accumulated fauna that could serve as a comparison mean that it is challenging to clarify whether the pattern of climatic similarity between layers results from a buffered climate in the region during this time or from a punctuated settlement pattern in which sampled deposits formed during similar mild climatic phases. Further study of the site's chronology and the expression of climatic oscillations in terrestrial palaeoclimatic archives in the region are needed to clarify this. Such work would substantially increase the specificity of the palaeoclimatic data generated here. Nevertheless, the isotopic data allow some site-specific inferences about the archaeological record. For example, the data presented here may tentatively support a hypothesis that differences in the technological record of the site, between the lower and upper part of the Middle Palaeolithic sequence, are not related to strong climatic or environmental differences between these different occupation phases. Other factors, such as changes in mobility patterns, technological tradition, or prey species and hunting technique could all be considered as alternative explanations to be explored in future research. This case study adds to expanding research indicating that late Pleistocene Neanderthal groups in southwest Europe may have preferred exploiting stable and productive ecosystems with mild mean annual temperatures (e.g., Pederzani *et al.*, 2021; Vidal-Cordasco *et al.*, 2022). At the same time, the repeated occupations of Axlor and climatically similar Neanderthal occupations at sites in both northern Iberia and southwest France (discussed earlier) suggest that Neanderthal

groups were well adapted to the conditions represented here, including the more pronounced temperature seasonality and colder winter temperatures, the effects of which may have been buffered by a stable ecosystem of herbivore prey. More broadly, our results illustrate the utility of approaches such as multi-isotope archaeozoology to generate the site-specific and hominin-associated data that are needed to characterise the ecological adaptations of late Pleistocene hominins.

In addition to making palaeoclimatic and palaeoenvironmental inferences, this study also explores methodological aspects of palaeotemperature estimation related to the use of oxygen stable isotope measurements of bioapatite carbonate and bioapatite phosphate. An approach that combines measurements of the two analytical fractions is presented. Statistical simulations show that uncertainty introduced by predicting  $\delta^{18}\text{O}_{\text{phos}}$  from  $\delta^{18}\text{O}_{\text{carb}}$  has a negligible effect on summer and winter palaeotemperature estimations, if primary  $\delta^{18}\text{O}_{\text{phos}}$  measurements are used to anchor summer peak and winter trough areas of the  $\delta^{18}\text{O}$  curve. Therefore, this study suggests such an approach is a viable option for case studies that are looking to achieve robust seasonal palaeotemperature estimation using a comparatively low-cost workflow.

**Supplementary material.** The Supplementary Material for this article can be found at <https://doi.org/10.1017/qua.2023.32>.

**Data availability statement.** Data sets are available on GitHub ([https://github.com/ERC-Subsiliencia/Axlor\\_paleoclimatic\\_data](https://github.com/ERC-Subsiliencia/Axlor_paleoclimatic_data)).

**Acknowledgments.** The carbon, nitrogen and sulphur stable isotope analyses and the stable isotope analyses of bioapatite carbonates were funded as part of the ABRUPT project (HAR2017-84997-P) funded by the Ministry of Science, Innovation and Universities and the SUBSILIENCIA project funded by the European Research Council (ERC) under the European Union's Horizon 2020 research and innovation programme (grant agreement no. 818299—ERC-2018-Consolidator), both awarded to ABM-A. SP was supported by the Max Planck Society and the University of Aberdeen during the time of this project, and the oxygen isotope analysis of bioapatite phosphates was funded by the Max Planck Society. Access to the archaeological collections was granted by the Museo de Arqueología de Bizkaia (Basque Government), and initial sampling for carbon and nitrogen isotope analysis was achieved by Hazel Reade funded by the FP7-PEOPLE-2012-CIG- 322112 project) and ABM-A. We appreciate Joseba Rios-Garaziar's advice about Axlor stratigraphy during the sampling process. We thank Ignacio Valera (IBBTEC, University of Cantabria) for kindly allowing the use of his laboratory facilities for collagen extraction. We thank Carlos Revilla Gómez (IBBTEC, University of Cantabria) for laboratory assistance during collagen extraction. Thanks are also due to Manuel Trost (MPI-EVA) for assistance during silver phosphate preparation and to Sven Steinbrenner for assistance with TC/EA-IRMS. KB is supported by a Philip Leverhulme Prize from the Leverhulme Trust (PLP-2019-284).

**Author contributions.** The project was designed by ABM-A and KB. Specimen identification and documentation were undertaken by ABM-A and LAP. Sampling and sample processing was conducted by JMG, LAP, JRJ, and SP. TC/EA-IRMS analyses were performed by SP. Data analyses and R coding were carried out by SP. SP wrote the paper with input from all authors.

**Code availability statement.** The R codes used to perform all of the analyses reported in this manuscript are available on GitHub ([https://github.com/ERC-Subsiliencia/Axlor\\_paleoclimatic\\_data](https://github.com/ERC-Subsiliencia/Axlor_paleoclimatic_data)).

## REFERENCES

AEMET, 2021. Valores climatológicos normales, Península y Baleares. <https://www.aemet.es/es/serviciosclimaticos/datosclimatologicos/valoresclimatologicos>, accessed November 17, 2021.

- Alathea, L., 2015. captioner: numbers figures and creates simple captions. R package version 2.2.3. <https://cran.r-project.org/web/packages/captioner/index.html>, accessed July 29, 2022.
- Allaire, J., Cheng, J., Xie, Y., McPherson, J., Chang, W., Allen, J., Hyndman, R., 2018. rmarkdown: dynamic documents for R, R package version 1.0. <https://cran.r-project.org/web/packages/rmarkdown/index.html>, accessed May 6, 2022.
- Altuna, J., 1989. La subsistence d'origine animal pendant le Moustérien dans la région Cantabrique (Espagne). In: Pathou, M., Freeman, L.G. (Eds.), *L'homme de Neandertal. La Subsistance. Actes Du Colloque International de Liège, 4-7 décembre 1986. Études et recherches archéologiques de l'Université de Liège* 33. Université de Liège, Liège, Belgium, pp. 41–43.
- Álvarez-Vena, A., Álvarez-Lao, D.J., Laplana, C., Quesada, J.M., Rojo, J., García-Sánchez, E., Menéndez, M., 2021. Environmental context for the Late Pleistocene (MIS 3) transition from Neanderthals to early Modern Humans: analysis of small mammals from La Güelga Cave, Asturias, northern Spain. *Palaeogeography, Palaeoclimatology, Palaeoecology* **562**, 110096.
- Amundson, R., 2003. Global patterns of the isotopic composition of soil and plant nitrogen. *Global Biogeochemical Cycles* **17**, 1031.
- Arppe, L.M., Karhu, J.A., 2010. Oxygen isotope values of precipitation and the thermal climate in Europe during the middle to late Weichselian ice age. *Quaternary Science Reviews* **29**, 1263–1275.
- Aufort, J., Ségalen, L., Gervais, C., Paulatto, L., Blanchard, M., Balan, E., 2017. Site-specific equilibrium isotopic fractionation of oxygen, carbon and calcium in apatite. *Geochimica et Cosmochimica Acta* **219**, 57–73.
- Ballesteros, D., Rodríguez-Rodríguez, L., González-Lemos, S., Giralt, S., Álvarez-Lao, D.J., Adrados, L., Jiménez-Sánchez, M., 2017. New evidence of sea-level lowstands and paleoenvironment during MIS 6 and 4 in the Cantabrian coastal karst: the Cobiheru cave (North Iberia). *Earth Surface Processes and Landforms* **42**, 1704–1716.
- Barandiarán, J. M., 1980. In: Barandiarán, J. M. (Ed.), *Obras Completas de José Miguel de Barandiarán Tomo XVII. La Gran Enciclopedia Vasca*, Bilbao, Spain, pp. 127–384.
- Basabe, J.M., 1973. Dientes humanos del Musteriense de Axlor (Dima, Vizcaya). *Trabajos de Antropología* **16**, 187–207.
- Basaguren, A., Orive, E., 1991. Los insectos tricópteros como indicadores de la calidad del agua de los ríos de Bizkaia. Subcuenca del Arratia y del Indusi. *KOBIE, Diputación Foral de Bizkaia*, no. XX, 45.
- Bataille, C.P., Jaouen, K., Milano, S., Trost, M., Steinbrenner, S., Crubézy, É., Colleter, R., 2021. Triple sulfur-oxygen-strontium isotopes probabilistic geographic assignment of archaeological remains using a novel sulfur isotope of western Europe. *PLoS ONE* **16**, e0250383.
- Bendrey, R., Vella, D., Zazzo, A., Balasse, M., Lepetz, S., 2015. Exponentially decreasing tooth growth rate in horse teeth: implications for isotopic analyses. *Archaeometry* **57**, 1104–1124.
- Bicho, N., Carvalho, M., 2022. Peninsular southern Europe refugia during the Middle Palaeolithic: an introduction. *Journal of Quaternary Science* **37**, 133–135.
- Bocherens, H., Drucker, D.G., Madelaine, S., 2014. Evidence for a <sup>15</sup>N positive excursion in terrestrial foodwebs at the Middle to Upper Palaeolithic transition in south-western France: implications for early modern human palaeodiet and palaeoenvironment. *Journal of Human Evolution* **69**, 31–43.
- Bowen, G.J., Revenaugh, J., 2003. Interpolating the isotopic composition of modern meteoric precipitation. *Water Resources Research* **39**, 1–13.
- Bradtmöller, M., Pastoors, A., Weninger, B., Weninger, G.-C., 2012. The repeated replacement model—rapid climate change and population dynamics in Late Pleistocene Europe, in: The Neanderthal home: spatial and social behaviours. Special issue, *Quaternary International* **247**, 38–49.
- Brand, W.A., Coplen, T.B., Aerts-Bijma, A.T., Böhlke, J.K., Gehre, M., Geilmann, H., Gröning, M., et al., 2009. Comprehensive inter-laboratory calibration of reference materials for δ<sup>18</sup>O versus VSMOW using various on-line high-temperature conversion techniques. *Rapid Communications in Mass Spectrometry* **23**, 999–1019.
- Britton, K., Fuller, B.T., Tütken, T., Mays, S., Richards, M.P., 2015. Oxygen isotope analysis of human bone phosphate evidences weaning age in archaeological populations. *American Journal of Physical Anthropology* **157**, 226–241.
- Britton, K., Jimenez, E.-L., Le Corre, M., Pederzani, S., Daujeard, C., Jaouen, K., Vettese, D., Tütken, T., Hublin, J.-J., Moncel, M.-H., 2023. Multi-isotope zooarchaeological investigations at Abri du Maras: the paleoecological and paleoenvironmental context of Neanderthal subsistence strategies in the Rhône Valley during MIS 3. *Journal of Human Evolution* **174**, 103292.
- Bronk Ramsey, C., 2009. Bayesian analysis of radiocarbon dates. *Radiocarbon* **51**, 337–360.
- Brown, W.A., Christofferson, P.V., Massler, M., Weiss, M.B., 1960. Postnatal tooth development in cattle. *American Journal of Veterinary Research* **21**, 7–34.
- Bryant, J.D., Froelich, P.N., Showers, W.J., Genna, B.J., 1996a. A tale of two quarries: biologic and taphonomic signatures in the oxygen isotope composition of tooth enamel phosphate from modern and Miocene equids. *Palaeos* **11**, 397–408.
- Bryant, J.D., Koch, P.L., Froelich, P.N., Showers, W.J., Genna, B.J., 1996b. Oxygen isotope partitioning between phosphate and carbonate in mammalian apatite. *Geochimica et Cosmochimica Acta* **60**, 5145–5148.
- Bryant, J.D., Luz, B., Froelich, P.N., 1994. Oxygen isotopic composition of fossil horse tooth phosphate as a record of continental paleoclimate. *Palaeogeography, Palaeoclimatology, Palaeoecology* **107**, 303–316.
- Castañes, P., 2005. Revisión actualizada de las faunas de macromamíferos del Würm antiguo en la región Cantábrica. In: Montes Barquín, R., Lasheras Corruchaga, J.A. (Eds.), *Actas de La Reunión Científica: Neandertales Cantábricos. Estado de La Cuestión*. Ministerio de Cultura, Madrid, pp. 201–207.
- Chenery, C.A., Pashley, V., Lamb, A.L., Sloane, H.J., Evans, J.A., 2012. The oxygen isotope relationship between the phosphate and structural carbonate fractions of human bioapatite. *Rapid Communications in Mass Spectrometry* **26**, 309–319.
- Clark, I.D., Fritz, P., 1997. *Environmental Isotopes in Hydrogeology*. Lewis Publishers, Boca Raton, FL.
- Coplen, T.B., Kendall, C., Hopple, J., 1983. Comparison of stable isotope reference samples. *Nature* **302**, 236–238.
- Craine, J.M., Elmore, A.J., Wang, L., Augusto, L., Baisden, W.T., Brookshire, E.N.J., Cramer, M.D., Hasselquist, N.J., Hobbie, E.A., Kahmen, A., 2015. Convergence of soil nitrogen isotopes across global climate gradients. *Scientific Reports* **5**, 1–8.
- D'Angela, D., Longinelli, A., 1990. Oxygen isotopes in living mammal's bone phosphate: further results. *Chemical Geology: Isotope Geoscience* **86**, 75–82.
- Dansgaard, W., 1964. Stable isotopes in precipitation. *Tellus* **16**, 436–468.
- Darling, W.G., Bath, A.H., Talbot, J.C., 2003. The O & H stable isotopic composition of fresh waters in the British Isles. 2. Surface waters and groundwater. *Hydrology and Earth System Sciences* **7**, 183–195.
- Daux, V., Lécuyer, C., Héran, M.A., Amiot, R., Simon, L., Fourrel, F., Martineau, F., Lynnnerup, N., Reychler, H., Escarguel, G., 2008. Oxygen isotope fractionation between human phosphate and water revisited. *Journal of Human Evolution* **55**, 1138–1147.
- Dean, M.C., 1987. Growth layers and incremental markings in hard tissues; a review of the literature and some preliminary observations about enamel structure in *Paranthropus boisei*. *Journal of Human Evolution* **16**, 157–172.
- Deepprose, L.M.C., 2018. *Speleothem Climate Capture of the Neanderthal Demise*. PhD dissertation. Lancaster University, Lancaster, UK.
- DeNiro, M.J.D., Epstein, S., 1978. Influence of diet on the distribution of carbon isotopes in animals. *Geochimica et Cosmochimica Acta* **42**, 495–506.
- DeNiro, M.J.D., Epstein, S., 1981. Influence of diet on the distribution of nitrogen isotopes in animals. *Geochimica et Cosmochimica Acta* **45**, 341–351.
- Dettman, D.L., Kohn, M.J., Quade, J., Ryerson, F.J., Ojha, T.P., Hamidullah, S., 2001. Seasonal stable isotope evidence for a strong Asian monsoon. *Geology* **29**, 31–34.
- Diefendorf, A.F., Mueller, K.E., Wing, S.L., Koch, P.L., Freeman, K.H., 2010. Global patterns in leaf <sup>13</sup>C discrimination and implications for studies of past and future climate. *Proceedings of the National Academy of Sciences USA* **107**, 5738–5743.
- Drucker, D.G., 2022. The isotopic ecology of the Mammoth Steppe. *Annual Review of Earth and Planetary Sciences* **50**, 395–418.

- Drucker, D.G., Bocherens, H., Billiou, D., 2003. Evidence for shifting environmental conditions in Southwestern France from 33 000 to 15 000 years ago derived from carbon-13 and nitrogen-15 natural abundances in collagen of large herbivores. *Earth and Planetary Science Letters* **216**, 163–173.
- Drucker, D.G., Bridault, A., Hobson, K.A., Szuma, E., Bocherens, H., 2008. Can carbon-13 in large herbivores reflect the canopy effect in temperate and boreal ecosystems? Evidence from modern and ancient ungulates. *Palaeogeography, Palaeoclimatology, Palaeoecology* **266**, 69–82.
- Drucker, D.G., Kind, C.-J., Stephan, E., 2011. Chronological and ecological information on Late-glacial and early Holocene reindeer from northwest Europe using radiocarbon ( $^{14}\text{C}$ ) and stable isotope ( $^{13}\text{C}$ ,  $^{15}\text{N}$ ) analysis of bone collagen: case study in southwestern Germany. *Quaternary International* **245**, 218–224.
- European Environment Agency, 2016. European Digital Elevation Model (EU-DEM), version 1.1. <https://land.copernicus.eu/imagery-in-situ/eu-dem/eu-dem-v1.1>, accessed March 1, 2021.
- Feranec, R.S., García, N., Díez, J.C., Arsuaga, J.L., 2010. Understanding the ecology of mammalian carnivores and herbivores from Valdegoba cave (Burgos, northern Spain) through stable isotope analysis. *Palaeogeography, Palaeoclimatology, Palaeoecology* **297**, 263–272.
- Fernández-García, M., Vidal-Cordasco, M., Jones, J.R., Marín-Arroyo, A.B., 2023. Reassessing palaeoenvironmental conditions during the Middle to Upper Palaeolithic transition in the Cantabrian region (southwestern Europe). *Quaternary Science Reviews* **301**, 107928.
- France, C.A.M., Owsley, D.W., 2015. Stable carbon and oxygen isotope spacing between bone and tooth collagen and hydroxyapatite in human archaeological remains. *International Journal of Osteoarchaeology* **25**, 299–312.
- Fricke, H.C., Clyde, W.C., O'Neil, J.R., 1998. Intra-tooth variations in  $\delta^{18}\text{O}$  (PO<sub>4</sub>) of mammalian tooth enamel as a record of seasonal variations in continental climate variables. *Geochimica et Cosmochimica Acta* **62**, 1839–1850.
- Fricke, H.C., O'Neil, J.R., 1996. Inter- and intra-tooth variation in the oxygen isotope composition of mammalian tooth enamel phosphate: implications for palaeoclimatological and palaeobiological research. *Palaeogeography, Palaeoclimatology, Palaeoecology* **126**, 91–99.
- Gat, J.R., 2010. *Isotope Hydrology: A Study of the Water Cycle*. Series on Environmental Science and Management 6. Imperial College Press, London, UK. <https://doi.org/10.1142/p027>.
- Gohel, D., 2020a. officer: manipulation of Microsoft Word and PowerPoint documents. R package version 0.4.2. <https://cran.r-project.org/web/packages/officer/index.html>, accessed March 23, 2022.
- Gohel, D., 2020b. flextable: functions for tabular reporting. R package version 0.7.0. <https://cran.r-project.org/web/packages/flextable/index.html>, accessed March 7, 2022.
- Gómez-Olivencia, A., Arceredillo, D., Álvarez-Lao, D.J., Garate, D., San Pedro, Z., Castaños, P., Rios-Garaizar, J., 2014. New evidence for the presence of reindeer (*Rangifer tarandus*) on the Iberian Peninsula in the Pleistocene: an archaeopalaeontological and chronological reassessment. *Boreas* **43**, 286–308.
- Gómez-Olivencia, A., López-Onaindia, D., Sala, N., Balzeau, A., Pantoja-Pérez, A., Arganda-Carreras, I., Arlegi, M., Rios-Garaizar, J., Gómez-Robles, A., 2020. The human remains from Axlór (Dima, Biscay, northern Iberian Peninsula). *American Journal of Physical Anthropology* **172**, 475–491.
- Gómez-Olivencia, A., López-Onaindia, D., Sala, N., Balzeau, A., Pantoja-Pérez, A., Arganda-Carreras, I., Arlegi, M., Rios-Garaizar, J., Gómez-Robles, A., 2023. The human remains found in 1967 in Axlór: still not convincingly Neandertals: a reply to González-Urquijo et al. *American Journal of Biological Anthropology* **180**, 245–251.
- Gómez-Olivencia, A., Sala, N., Núñez-Lahuerta, C., Sanchis, A., Arlegi, M., Rios-Garaizar, J., 2018. First data of Neandertal bird and carnivore exploitation in the Cantabrian region (Axlór; Barandiaran excavations; Dima, Biscay, Northern Iberian Peninsula). *Scientific Reports* **8**. <https://doi.org/10.1038/s41598-018-28377-y>.
- Gonfiantini, R., 1986. Environmental isotopes in lake studies. In: Fritz, P., Fontes, J.-C. (Eds.), *Handbook of Environmental Isotope Geochemistry: The Terrestrial Environment*. IAEA, Vienna, pp. 113–168.
- González-Sampériz, P., Leroy, S.A.G., Carrión, J.S., Fernández, S., García-Antón, M., Gil-García, M.J., Uzquiano, P., Valero-Garcés, B., Figueiral, I., 2010. Steppes, savannahs, forests and phytodiversity reservoirs during the Pleistocene in the Iberian Peninsula, in: Iberian floras through time: land of diversity and survival. Special issue, *Review of Palaeobotany and Palynology* **162**, 427–457.
- González-Urquijo, J., Bailey, S.E., Lazuen, T., 2021. Axlór's level IV human remains are convincingly Neandertals: a reply to Gómez-Olivencia et al. *American Journal of Physical Anthropology* **176**, 553–558.
- González-Urquijo, J.E., Ríos Garaizar, J., Ibáñez Estévez, J.J., 2002. Abrigo de Axlór (Dima). *Arkeoikuska: Investigación arqueológica*, 78–81.
- Green, D.R., Smith, T.M., Green, G.M., Bidlack, F.B., Tafforeau, P., Colman, A.S., 2018. Quantitative reconstruction of seasonality from stable isotopes in teeth. *Geochimica et Cosmochimica Acta* **235**, 483–504.
- Guede, I., Zuluaga, M.C., Ortega, L.A., Alonso-Olazabal, A., Murelaga, X., García Camino, I., Iacumin, P., 2020. Social structuration in medieval rural society based on stable isotope analysis of dietary habits and mobility patterns: San Juan de Momoiito (Biscay, north Iberian Peninsula). *Journal of Archaeological Science: Reports* **31**, 102300.
- Guiry, E., Noël, S., Fowler, J., 2021. Archaeological herbivore  $\delta^{13}\text{C}$  and  $\delta^{34}\text{S}$  provide a marker for saltmarsh use and new insights into the process of  $^{15}\text{N}$ -enrichment in coastal plants. *Journal of Archaeological Science* **125**, 105295.
- Halder, J., Terzer, S., Wassenaar, L.I., Araguás-Araguás, L., Aggarwal, P.K., 2015. The Global Network of Isotopes in Rivers (GNIR): integration of water isotopes in watershed observation and riverine research. *Hydrology and Earth System Sciences* **19**, 3419–3431. <https://doi.org/10.5194/hess-19-3419-2015>
- Hammer, B., Frasco, M., 2018. metrics: evaluation metrics for machine learning. R package version 0.1.4. <https://github.com/mfrasco/Metrics>, accessed July 29, 2022.
- Higham, T., 2011. European Middle and Upper Palaeolithic radiocarbon dates are often older than they look: problems with previous dates and some remedies. *Antiquity* **85**, 235–249.
- Higham, T., Douka, K., Wood, R., Ramsey, C.B., Brock, F., Basell, L., Camps, M., et al., 2014. The timing and spatiotemporal patterning of Neandertal disappearance. *Nature* **512**, 306–309.
- Hillson, S., 2005. *Teeth*. Cambridge University Press, Cambridge.
- Hoppe, K.A., 2006. Correlation between the oxygen isotope ratio of North American bison teeth and local waters: implication for paleoclimatic reconstructions. *Earth and Planetary Science Letters* **244**, 408–417.
- Hoppe, K.A., Amundson, R., Vavra, M., McClaran, M.P., Anderson, D.L., 2004. Isotopic analysis of tooth enamel carbonate from modern North American feral horses: implications for paleoenvironmental reconstructions. *Palaeogeography, Palaeoclimatology, Palaeoecology* **203**, 299–311.
- Iacumin, P., Bocherens, H., Mariotti, A., Longinelli, A., 1996. Oxygen isotope analyses of co-existing carbonate and phosphate in biogenic apatite: a way to monitor diagenetic alteration of bone phosphate? *Earth and Planetary Science Letters* **142**, 1–6.
- [IAEA/WMO] International Atomic Energy Agency/World Meteorological Organization, 2020. Global Network of Isotopes in Precipitation. The GNIP Database. <https://nucleus.iaea.org/wiser/index.aspx>, accessed September 22, 2020.
- Jennings, R., Finlayson, C., Fa, D., Finlayson, G., 2011. Southern Iberia as a refuge for the last Neandertal populations. *Journal of Biogeography* **38**, 1873–1885.
- Jones, J.R., Marín-Arroyo, A.B., Corchón Rodríguez, M.S., Richards, M.P., 2021. After the Last Glacial Maximum in the refugium of northern Iberia: environmental shifts, demographic pressure and changing economic strategies at Las Caldas Cave (Asturias, Spain). *Quaternary Science Reviews* **262**, 106931.
- Jones, J.R., Marín-Arroyo, A.B., Straus, L.G., Richards, M.P., 2020. Adaptability, resilience and environmental buffering in European Refugia during the Late Pleistocene: insights from La Riera Cave (Asturias, Cantabria, Spain). *Scientific Reports* **10**, 1217.
- Jones, J.R., Richards, M.P., Reade, H., Bernaldo de Quirós, F., Marín-Arroyo, A.B., 2019. Multi-Isotope investigations of ungulate bones and teeth from El Castillo and Covalejos caves (Cantabria, Spain): implications for paleoenvironment reconstructions across the Middle-Upper Palaeolithic transition. *Journal of Archaeological Science: Reports* **23**, 1029–1042.



- Jones, J.R., Richards, M.P., Straus, L.G., Reade, H., Altuna, J., Mariezkurrena, K., Marín-Arroyo, A.B., 2018. Changing environments during the Middle-Upper Palaeolithic transition in the eastern Cantabrian Region (Spain): direct evidence from stable isotope studies on ungulate bones. *Scientific Reports* 8. <https://doi.org/10.1038/s41598-018-32493-0>.
- Kassambara, A., 2020a. ggpubr: 'ggplot2' based publication ready plots. R package version 0.4.0. <https://cran.r-project.org/web/packages/ggpubr/index.html>, accessed July 29, 2022.
- Kassambara, A., 2020b. rstatix: pipe-friendly framework for basic statistical tests. R package version 0.7.0. <https://cran.r-project.org/web/packages/rstatix/index.html>, accessed July 29, 2022.
- Kohn, M.J., 2004. Comment: Tooth enamel mineralization in ungulates: implications for recovering a primary isotopic time-series, by B. H. Passey and T. E. Cerling (2002). *Geochimica et Cosmochimica Acta* 68, 403–405.
- Kohn, M.J., Schoeninger, M.J., Valley, J.W., 1996. Herbivore tooth oxygen isotope compositions: effects of diet and physiology. *Geochimica et Cosmochimica Acta* 60, 3889–3896.
- Kohn, M.J., Welker, J.M., 2005. On the temperature correlation of  $\delta^{18}\text{O}$  in modern precipitation. *Earth and Planetary Science Letters* 231, 87–96.
- Laskar, J., Robutel, P., Joutel, F., Gastineau, M., Correia, A.C.M., Levrard, B., 2004. A long-term numerical solution for the insolation quantities of the Earth. *Astronomy & Astrophysics* 428, 261–285.
- Lee-Thorp, J.A., 2008. On isotopes and old bones. *Archaeometry* 50, 925–950.
- Longinelli, A., 1984. Oxygen isotopes in mammal bone phosphate: a new tool for paleohydrological and paleoclimatological research? *Geochimica et Cosmochimica Acta* 48, 385–390.
- Longinelli, A., Nuti, S., 1973. Oxygen isotope measurements of phosphate from fish teeth and bones. *Earth and Planetary Science Letters* 20, 337–340.
- López-García, J.M., Blain, H.-A., Sanz, M., Daura, J., 2012. A coastal reservoir of terrestrial resources for neanderthal populations in north-eastern Iberia: palaeoenvironmental data inferred from the small-vertebrate assemblage of Cova del Gegant, Sitges, Barcelona. *Journal of Quaternary Science* 27, 105–113.
- López-García, J.M., Cuenca-Bescós, G., Blain, H.A., Álvarez-Lao, D., Uzquiano, P., Adán, G., Arbizu, M., Arsuaga, J.L., 2011. Palaeoenvironment and palaeoclimate of the Mousterian-Aurignacian transition in northern Iberia: the small-vertebrate assemblage from Cueva del Conde (Santo Adriano, Asturias). *Journal of Human Evolution* 61, 108–116.
- Luz, B., Kolodny, Y., Horowitz, M., 1984. Fractionation of oxygen isotopes between mammalian bone-phosphate and environmental drinking water. *Geochimica et Cosmochimica Acta* 48, 1689–1693.
- Marín-Arroyo, A.B., Geiling, J.-M., Jones, J.R., González Morales, M.R., Straus, L.G., Richards, M.P., 2020. The Middle to Upper Palaeolithic transition at El Mirón Cave (Cantabria, Spain). *Quaternary International* 544, 23–31.
- Marín-Arroyo, A.B., Rios-Garaizar, J., Straus, L.G., Jones, J.R., De la Rasilla, M., González Morales, M.R., Richards, M., Altuna, J., Mariezkurrena, K., Ocio, D., 2018. Chronological reassessment of the Middle to Upper Paleolithic transition and early Upper Paleolithic cultures in Cantabrian Spain. *PLoS ONE* 13, e0194708.
- Marín-Arroyo, A.B., Sanz-Royo, A., 2022. What Neanderthals and AMH ate: reassessment of the subsistence across the Middle–Upper Palaeolithic transition in the Vasco-Cantabrian region of SW Europe. *Journal of Quaternary Science* 37, 320–334.
- Maroto, J., Vaquero, M., Arrizabalaga, Á., Baena, J., Baquedano, E., Jordá, J., Julià, R., et al., 2012. Current issues in late Middle Palaeolithic chronology: new assessments from Northern Iberia, in: The Neanderthal home: spatial and social behaviours. Special issue, *Quaternary International* 247, 15–25.
- Martin, C., Bentaleb, I., Kaandorp, R., Iacumin, P., Chatri, K., 2008. Intra-tooth study of modern rhinoceros enamel  $\delta^{18}\text{O}$ : is the difference between phosphate and carbonate  $\delta^{18}\text{O}$  a sound diagenetic test? *Palaeogeography, Palaeoclimatology, Palaeoecology* 266, 183–189.
- Martrat, B., Grimalt, J.O., Shackleton, N.J., Abreu, L. de, Hutterli, M.A., Stocker, T.F., 2007. Four climate cycles of recurring deep and surface water destabilizations on the Iberian margin. *Science* 317, 502–507.
- McArdle, N., Liss, P., Dennis, P., 1998. An isotopic study of atmospheric sulphur at three sites in Wales and at Mace Head, Eire. *Journal of Geophysical Research: Atmospheres* 103, 31079–31094.
- Merwe, N.J. van der, Medina, E., 1991. The canopy effect, carbon isotope ratios and foodwebs in Amazonia. *Journal of Archaeological Science* 18, 249–259.
- Miller, H., Chenery, C., Lamb, A.L., Sloane, H., Carden, R.F., Atici, L., Sykes, N., 2019. The relationship between the phosphate and structural carbonate fractionation of fallow deer bioapatite in tooth enamel. *Rapid Communications in Mass Spectrometry* 33, 151–164.
- Mizota, C., Sasaki, A., 1996. Sulfur isotope composition of soils and fertilizers: differences between Northern and Southern hemispheres. *Geoderma* 71, 77–93.
- Moreno, A., Svensson, A., Brooks, S.J., Connor, S., Engels, S., Fletcher, W.J., Genty, D., et al., 2014. A compilation of Western European terrestrial records 60–8kaBP: towards an understanding of latitudinal climatic gradients. *Quaternary Science Reviews* 106, 167–185.
- Mozota Holgueras, M., 2012. El hueso como materia prima: El utillaje óseo del final del musteriense en el sector central del norte de la península ibérica. Doctoral thesis. Universidad de Cantabria, Santander, Spain.
- Müller, S., Stumpp, C., Sørensen, J.H., Jessen, S., 2017. Spatiotemporal variation of stable isotopic composition in precipitation: post-condensational effects in a humid area. *Hydrological Processes* 31, 3146–3159.
- Nehlich, O., 2015. The application of sulphur isotope analyses in archaeological research: a review. *Earth-Science Reviews* 142, 1–17.
- Nehlich, O., Richards, M.P., 2009. Establishing collagen quality criteria for sulphur isotope analysis of archaeological bone collagen. *Archaeological and Anthropological Sciences* 1, 59–75.
- Novomestky, F., 2021. Matrixcalc: collection of functions for matrix calculations. R package version 1.0-5. <https://cran.r-project.org/web/packages/matrixcalc/index.html>, accessed July 29, 2022.
- Ocio, D., Stocker, C., Eraso, Á., Cowpertwait, P., 2016. Regionalized extreme flows by means of stochastic storm generation coupled with a distributed hydrological model. The case of the Basque Country. In: *E-Proceedings of the 36th IAHR World Congress 28 June–3 July 2015, The Hague, the Netherlands*. <https://doi.org/10.13140/RG.2.1.3924.4889>
- Ooms, J., 2020. magick: advanced graphics and image-processing in R. R package version 2.7.3. <https://cran.r-project.org/web/packages/magick/index.html>, accessed July 30, 2022.
- OpenStreetMap Contributors, 2020. Planet dump. <https://planet.osm.org>, accessed August 8, 2022.
- O'Regan, H.J., 2008. The Iberian Peninsula—corridor or cul-de-sac? Mammalian faunal change and possible routes of dispersal in the last 2 million years, in: The coastal shelf of the Mediterranean and beyond: corridor and refugium for human populations in the Pleistocene. Special issue, *Quaternary Science Reviews* 27, 2136–2144.
- Park, R., Epstein, S., 1961. Metabolic fractionation of  $\text{C}^{12}$  &  $\text{C}^{13}$  in plants. *Plant Physiology* 36, 133–138.
- Passey, B.H., Cerling, T.E., 2002. Tooth enamel mineralization in ungulates: implications for recovering a primary isotopic time-series. *Geochimica et Cosmochimica Acta* 66, 3225–3234.
- Passey, B.H., Cerling, T.E., Schuster, G.T., Robinson, T.F., Roeder, B.L., Krueger, S.K., 2005. Inverse methods for estimating primary input signals from time-averaged isotope profiles. *Geochimica et Cosmochimica Acta* 69, 4101–4116.
- Pedersen, T.L., 2020. patchwork: the composer of plots. R package version 1.1.1. <https://cran.r-project.org/web/packages/patchwork/index.html>, accessed July 29, 2022.
- Pederzani, S., Aldeias, V., Dibble, H.L., Goldberg, P., Hublin, J.J., Madelaine, S., McPherron, S.P., et al., 2021. Reconstructing Late Pleistocene paleoclimate at the scale of human behavior: an example from the Neanderthal occupation of La Ferrassie (France). *Scientific Reports* 11, 1419.
- Pederzani, S., Britton, K., 2019. Oxygen isotopes in bioarchaeology: principles and applications, challenges and opportunities. *Earth-Science Reviews* 188, 77–107.
- Pellegrini, M., Lee-Thorp, J.A., Donahue, R.E., 2011. Exploring the variation of the  $\delta^{18}\text{O}_p$  and  $\delta^{18}\text{O}_c$  relationship in enamel increments. *Palaeogeography, Palaeoclimatology, Palaeoecology* 310, 71–83.



- Pellitero, R., Fernández-Fernández, J.M., Campos, N., Serrano, E., Pisabarro, A., 2019. Late Pleistocene climate of the northern Iberian Peninsula: new insights from palaeoglaciators at Fuentes Carrionas (Cantabrian Mountains). *Journal of Quaternary Science* **34**, 342–354.
- Power, R.C., Salazar-García, D.C., Rubini, M., Darlas, A., Harvati, K., Walker, M., Hublin, J.-J., Henry, A.G., 2018. Dental calculus indicates widespread plant use within the stable Neanderthal dietary niche. *Journal of Human Evolution* **119**, 27–41.
- Pryor, A.J.E., Stevens, R.E., O'Connell, T.C., Lister, J.R., 2014. Quantification and propagation of errors when converting vertebrate biomineral oxygen isotope data to temperature for palaeoclimate reconstruction. *Palaeogeography, Palaeoclimatology, Palaeoecology* **412**, 99–107.
- Pucéat, E., Joachimski, M.M., Bouilloux, A., Monna, F., Bonin, A., Motreuil, S., Morinière, P., et al., 2010. Revised phosphate-water fractionation equation reassessing paleotemperatures derived from biogenic apatite. *Earth and Planetary Science Letters* **298**, 135–142.
- Ram, K., Wickham, H., 2018. Wesanderson: a wes anderson palette generator. R package version 0.3.6. <https://cran.r-project.org/web/packages/wesanderson/index.html>, accessed July 29, 2022.
- Rasilla, M. de la, Duarte, E., Sanchis, A., Carrión, Y., Cañaveras, J.C., Marín-Arroyo, A.B., Real, C., et al., 2020. Environment and subsistence strategies at La Viña rock shelter and Llonin cave (Asturias, Spain) during MIS3. *Journal of Archaeological Science: Reports* **30**, 102198.
- R Core Team, 2020. R: A Language and Environment for Statistical Computing. R Foundation for Statistical Computing, Vienna.
- Reade, H., Tripp, J.A., Charlton, S., Grimm, S.B., Leesch, D., Müller, W., Sayle, K.L., et al., 2020. Deglacial landscapes and the Late Upper Palaeolithic of Switzerland. *Quaternary Science Reviews* **239**. <https://doi.org/10.1016/j.quascirev.2020.106372>
- Reimer, P., Austin, W.E.N., Bard, E., Bayliss, A., Blackwell, P.G., Bronk Ramsey, C., Butzin, M., Cheng, H., Edwards, R.L., Friedrich, M., 2020. The IntCal20 Northern Hemisphere radiocarbon age calibration curve (0–55 kcal BP). *Radiocarbon* **62**, 725–757.
- Richards, M.P., Hedges, R.E.M., 1999. Stable isotope evidence for similarities in the types of marine foods used by late Mesolithic humans at sites along the Atlantic Coast of Europe. *Journal of Archaeological Science* **26**, 717–722.
- Richards, M.P., Pellegrini, M., Niven, L., Nehlich, O., Dibble, H.L., Turq, A., McPherron, S.J.P., 2017. Temporal variations in *Equus* tooth isotope values (C,N,O) from the Middle Paleolithic site of Combe Grenal, France (ca. 150,000 to 50,000 BP). *Journal of Archaeological Science: Reports* **14**, 189–198.
- Ríos-Garaizar, J., 2012. *Industria lítica y sociedad en la transición del Paleolítico Medio al Superior en torno al Golfo de Bizkaia*. PUBliCan—ediciones de la universidad de cantabria, Santander, Spain.
- Ríos-Garaizar, J., 2017. A new chronological and technological synthesis for Late Middle Paleolithic of the Eastern Cantabrian Region. *Quaternary International* **433**, 50–63.
- Ríos-Garaizar, J., Arrizabalaga, A., Villaluenga, A., 2012. Haltes de chasse du Châtelperronien de la Péninsule Ibérique : Labeko Koba et Ekain (Pays Basque Péninsulaire). *L'Anthropologie, Paléolithique supérieur (I)* **116**, 532–549.
- Ríos-Garaizar, J., Iriarte, E., Arnold, L.J., Sánchez-Romero, L., Marín-Arroyo, A.B., Emeterio, A.S., Gómez-Olivencia, A., et al., 2022. The intrusive nature of the Châtelperronian in the Iberian Peninsula. *PLoS ONE* **17**, e0265219.
- Ríos-Garaizar, J., Moreno, A., 2015. Middle Paleolithic mobility patterns and settlement system variability in the eastern Cantabrian region (Iberian Peninsula): a GIS-based resource patching model. In: Conard, N.J., Delagnes, A. (Eds.), *Settlement Dynamics of the Middle Paleolithic and Middle Stone Age*. Kerns Verlag, Tübingen, Germany.
- Rodríguez-Almagro, M., Sala, N., Wißing, C., Arriolabengoa, M., Etxeberria, F., Ríos-Garaizar, J., Gómez-Olivencia, A., 2021. Ecological conditions during the Middle to Upper Palaeolithic transition (MIS 3) in Iberia: the cold-adapted faunal remains from Mainea, northern Iberian Peninsula. *Boreas* **50**, 686–708.
- Roucoux, K.H., Abreu, L. de, Shackleton, N.J., Tzedakis, P.C., 2005. The response of NW Iberian vegetation to North Atlantic climate oscillations during the last 65kyr, in: Quaternary land-ocean correlation. Special issue, *Quaternary Science Reviews* **24**, 1637–1653.
- Rozanski, K., Araguás-Araguás, L., Gonfiantini, R., 1992. Relation between long-term trends of oxygen-18 isotope composition of precipitation and climate. *Science* **258**, 981–985.
- Rozanski, K., Araguás-Araguás, L., Gonfiantini, R., 1993. Isotopic patterns in modern global precipitation. *Climate Change in Continental Isotopic Records* **78**, 1–36.
- Sánchez Chillón, B., Alberdi, M.T., Leone, G., Bonadonna, F.P., Stenni, B., Longinelli, A., 1994. Oxygen isotopic composition of fossil equid tooth and bone phosphate: an archive of difficult interpretation. *Palaeogeography, Palaeoclimatology, Palaeoecology* **107**, 317–328.
- Sánchez Goñi, M.F., Bard, E., Landais, A., Rossignol, L., d'Errico, F., 2013. Air–sea temperature decoupling in western Europe during the last interglacial–glacial transition. *Nature Geoscience* **6**, 837–841.
- Sánchez Goñi, M.F., Landais, A., Fletcher, W.J., Naughton, F., Desprat, S., Duprat, J., 2008. Contrasting impacts of Dansgaard–Oeschger events over a western European latitudinal transect modulated by orbital parameters. *Quaternary Science Reviews* **27**, 1136–1151.
- Sánchez Hernández, A., 2021. Captación de materias primas líticas en el Paleolítico Medio. Modelización paleo-territorial en el yacimiento de Axlór (Bizkaia, País Vasco). Trabajo fin de máster. Master's thesis. Universidad de Cantabria, Santander, Spain.
- Sánchez-Hernández, C., Gourichon, L., Pubert, E., Rendu, W., Montes, R., Rivals, F., 2019. Combined dental wear and cementum analyses in ungulates reveal the seasonality of Neanderthal occupations in Covalejos Cave (northern Iberia). *Scientific Reports* **9**, 14335.
- Sánchez Yustos, P., Diez Martín, F., 2015. Dancing to the rhythms of the Pleistocene? Early Middle Paleolithic population dynamics in NW Iberia (Duero Basin and Cantabrian Region). *Quaternary Science Reviews* **121**, 75–88.
- Serrano, E., González-Trueba, J.J., Pellitero, R., Gómez-Lende, M., 2017. Quaternary glacial history of the Cantabrian Mountains of northern Spain: a new synthesis. *Geological Society of London Special Publication* **433**, 55–85.
- Shahack-Gross, R., Tchernov, E., Luz, B., 1999. Oxygen isotopic composition of mammalian skeletal phosphate from the Natufian Period, Hayonim Cave, Israel: diagenesis and paleoclimate. *Geoarchaeology* **14**, 1–13.
- Skrzypek, G., Sadler, R., Wisniewski, A., 2016. Reassessment of recommendations for processing mammal phosphate  $\delta^{18}\text{O}$  data for paleotemperature reconstruction. *Palaeogeography, Palaeoclimatology, Palaeoecology* **446**, 162–167.
- Skrzypek, G., Winiewski, A., Grierson, P.F., 2011. How cold was it for Neanderthals moving to Central Europe during warm phases of the last glaciation? *Quaternary Science Reviews* **30**, 481–487.
- Stevens, R.E., Hedges, R.E.M., 2004. Carbon and nitrogen stable isotope analysis of northwest European horse bone and tooth collagen, 40,000 BP–present: palaeoclimatic interpretations. *Quaternary Science Reviews* **23**, 977–991.
- Stevens, R.E., Hermoso-Buxán, X.L., Marín-Arroyo, A.B., González-Morales, M.R., Straus, L.G., 2014. Investigation of Late Pleistocene and Early Holocene palaeoenvironmental change at El Mirón cave (Cantabria, Spain): insights from carbon and nitrogen isotope analyses of red deer. *Palaeogeography, Palaeoclimatology, Palaeoecology* **414**, 46–60.
- Stevens, R.E., Jacobi, R., Street, M., Germonpré, M., Conard, N.J., Münzel, S.C., Hedges, R.E.M., 2008. Nitrogen isotope analyses of reindeer (*Rangifer tarandus*), 45,000 BP to 9,000 BP: palaeoenvironmental reconstructions. *Palaeogeography, Palaeoclimatology, Palaeoecology* **262**, 32–45.
- Straus, L.G., González Morales, M.R., 2016. El Mirón Cave (Ramales, Cantabria, Spain) Date List V: Middle Paleolithic and Lower Magdalenian. *Radiocarbon* **58**, 943–945.
- Stumm, C., Klaus, J., Stichler, W., 2014. Analysis of long-term stable isotopic composition in German precipitation. *Journal of Hydrology* **517**, 351–361.
- Szpak, P., Longstaffe, F.J., Macdonald, R., Millaire, J.-F., White, C.D., Richards, M.P., 2019. Plant sulfur isotopic compositions are altered by marine fertilizers. *Archaeological and Anthropological Sciences* **11**, 2989–2999.
- Thode, H.G., 1991. Sulphur isotopes in nature and the environment: an overview. In: Krouse, H.R., Grinenko, V.A. (Eds.), *Stable Isotopes in the Assessment of Natural and Anthropogenic Sulphur in the Environment*. SCOPE 43. Wiley, Chichester, UK, pp. 1–26.

- Tieszen, L.**, 1991. Natural variations in the carbon isotope values of plants: Implications for archaeology, ecology, and paleoecology. *Journal of Archaeological Science* **18**, 227–248.
- Tieszen, L., Boutton, T.**, 1989. Stable carbon isotopes in terrestrial ecosystem research. In: Rundel, P.W., Ehleringer, J.R., Nagy, K.A. (Eds.), *Stable Isotopes in Ecological Research*. Ecological Studies 68. Springer, New York, pp. 167–195.
- Traylor, R.B., Kohn, M.J.**, 2016. Tooth enamel maturation reequilibrates oxygen isotope compositions and supports simple sampling methods. *Geochimica et Cosmochimica Acta* **198**, 32–47.
- Tütken, T., Furrer, H., Walter Vennemann, T.**, 2007. Stable isotope compositions of mammoth teeth from Niederweningen, Switzerland: implications for the Late Pleistocene climate, environment, and diet. *Quaternary International* **164–165**, 139–150.
- Tütken, T., Vennemann, T.W., Janz, H., Heizmann, E.P.J.**, 2006. Palaeoenvironment and palaeoclimate of the Middle Miocene lake in the Steinheim basin, SW Germany: a reconstruction from C, O, and Sr isotopes of fossil remains. *Palaogeography, Palaeoclimatology, Palaeoecology* **241**, 457–491.
- Van Klinken, G.J.**, 1999. Bone collagen quality indicators for palaeodietary and radiocarbon measurements. *Journal of Archaeological Science* **26**, 687–695.
- Vidal-Cordasco, M., Ocio, D., Hickler, T., Marín-Arroyo, A.B.**, 2022. Ecosystem productivity affected the spatiotemporal disappearance of Neanderthals in Iberia. *Nature Ecology & Evolution* **6**, 1644–1657.
- Wickham, H.**, 2016. *ggplot2: Elegant Graphics for Data Analysis*. Springer, New York.
- Wickham, H.**, 2019. stringr: simple, consistent wrappers for common string operations. R package version 1.4.0. <https://cran.r-project.org/web/packages/stringr/index.html>, accessed May 6, 2022.
- Wickham, H., François, R., Henry, L., Müller, K.**, 2019. dplyr: a grammar of data manipulation. R package version 1.0.9. <https://cran.r-project.org/web/packages/dplyr/index.html>, accessed May 6, 2022.
- Wickham, H., Henry, L.**, 2019. tidy: tidy messy data. R package version 1.2.0. <https://cran.r-project.org/web/packages/tidy/index.html>, accessed May 6, 2022.
- Wickham, H., Seidel, D.**, 2020. Scales: scale functions for visualization. R package version 1.2.0. <https://cran.r-project.org/web/packages/scales/index.html>, accessed April 29, 2022.
- Wilke, C.O.**, 2019. cowplot: streamlined plot theme and plot annotations for 'ggplot2'. R package version 1.1.1. <https://cran.r-project.org/web/packages/cowplot/index.html>, accessed May 5, 2022.
- Wood, R., Bernaldo de Quirós, F., Maíllo-Fernández, J.-M., Tejero, J.-M., Neira, A., Higham, T.**, 2018. El Castillo (Cantabria, northern Iberia) and the Transitional Aurignacian: using radiocarbon dating to assess site taphonomy, in: Chronostratigraphic data about the Middle to Upper Palaeolithic cultural change in Iberian Peninsula. Special issue, *Quaternary International* **474**, 56–70.
- Wood, R.E., Arrizabalaga, A., Camps, M., Fallon, S., Iriarte-Chiapusso, M.-J., Jones, R., Maroto, J., et al.**, 2014. The chronology of the earliest Upper Palaeolithic in northern Iberia: new insights from L'Arbreda, Labeko Koba and La Viña. *Journal of Human Evolution* **69**, 91–109.
- Xie, Y.**, 2014. Knitr: a comprehensive tool for reproducible research in R. In: Stodden, V., Leisch, F., Peng, R.D. (Eds.), *Implementing Reproducible Computational Research*. Chapman Hall/CRC, Boca Raton, FL.
- Yravedra-Sainz de los Terreros, J., Gómez-Castanedo, A., Aramendi-Picado, J., Montes-Barquín, R., Sanguino-González, J.**, 2016. Neanderthal and *Homo sapiens* subsistence strategies in the Cantabrian region of northern Spain. *Archaeological and Anthropological Sciences* **8**, 779–803.
- Yravedra, J., Cobo-Sánchez, L.**, 2015. Neanderthal exploitation of ibex and chamois in southwestern Europe. *Journal of Human Evolution* **78**, 12–32.
- Zazzo, A., Bendrey, R., Vella, D., Moloney, A.P., Monahan, F.J., Schmidt, O.**, 2012. A refined sampling strategy for intra-tooth stable isotope analysis of mammalian enamel. *Geochimica et Cosmochimica Acta* **84**, 1–13.
- Zazzo, A., Lécuyer, C., Sheppard, S.M.F., Grandjean, P., Mariotti, A.**, 2004. Diagenesis and the reconstruction of paleoenvironments: a method to restore original  $\delta^{18}\text{O}$  values of carbonate and phosphate from fossil tooth enamel. *Geochimica et Cosmochimica Acta* **68**, 2245–2258.