

## Central Lancashire Online Knowledge (CLOK)

Title	A search for non-pulsating, chemically normal stars in the Scuti instability strip using Kepler data
Type	Article
URL	<a href="https://clock.uclan.ac.uk/11821/">https://clock.uclan.ac.uk/11821/</a>
DOI	<a href="https://doi.org/10.1093/mnras/stu2749">https://doi.org/10.1093/mnras/stu2749</a>
Date	2015
Citation	Murphy, S. J., Bedding, T. R., Niemczura, E., Kurtz, D. W. and Smalley, B. (2015) A search for non-pulsating, chemically normal stars in the Scuti instability strip using Kepler data. Monthly Notices of the Royal Astronomical Society, 447 (4). pp. 3948-3959. ISSN 0035-8711
Creators	Murphy, S. J., Bedding, T. R., Niemczura, E., Kurtz, D. W. and Smalley, B.

It is advisable to refer to the publisher's version if you intend to cite from the work.  
<https://doi.org/10.1093/mnras/stu2749>

For information about Research at UCLan please go to <http://www.uclan.ac.uk/research/>

All outputs in CLOK are protected by Intellectual Property Rights law, including Copyright law. Copyright, IPR and Moral Rights for the works on this site are retained by the individual authors and/or other copyright owners. Terms and conditions for use of this material are defined in the <http://clock.uclan.ac.uk/policies/>

# A search for non-pulsating, chemically normal stars in the $\delta$ Scuti instability strip using *Kepler* data

Simon J. Murphy,<sup>1,2★</sup> Timothy R. Bedding,<sup>1,2</sup> Ewa Niemczura,<sup>3</sup> Donald W. Kurtz<sup>4</sup> and Barry Smalley<sup>5</sup>

<sup>1</sup>Sydney Institute for Astronomy (SIfA), School of Physics, University of Sydney, NSW 2006, Australia

<sup>2</sup>Stellar Astrophysics Centre, Department of Physics and Astronomy, Aarhus University, DK-8000 Aarhus C, Denmark

<sup>3</sup>Instytut Astronomiczny, Uniwersytet Wrocławski, Kopernika 11, 51-622 Wrocław, Poland

<sup>4</sup>Jeremiah Horrocks Institute, University of Central Lancashire, Preston PR1 2HE, UK

<sup>5</sup>Astrophysics Group, Keele University, Staffordshire ST5 5BG, UK

Accepted 2014 December 23. Received 2014 December 23; in original form 2014 November 27

## ABSTRACT

We identify stars in the  $\delta$  Sct instability strip that do not pulsate in p modes at the 50- $\mu$ m limit, using *Kepler* data. Spectral classification and abundance analyses from high-resolution spectroscopy allow us to identify chemically peculiar stars, in which the absence of pulsations is not surprising. The remaining stars are chemically normal, yet they are not  $\delta$  Sct stars. Their lack of observed p modes cannot be explained through any known mechanism. However, they are mostly distributed around the edges of the  $\delta$  Sct instability strip, which allows for the possibility that they actually lie outside the strip once the uncertainties are taken into account. We investigated the possibility that the non-pulsators inside the instability strip could be unresolved binary systems, having components that both lie outside the instability strip. If misinterpreted as single stars, we found that such binaries could generate temperature discrepancies of  $\sim 300$  K – larger than the spectroscopic uncertainties, and fully consistent with the observations. After these considerations, there remains one chemically normal non-pulsator that lies in the middle of the instability strip. This star is a challenge to pulsation theory. However, its existence as the only known star of its kind indicates that such stars are rare. We conclude that the  $\delta$  Sct instability strip is pure, unless pulsation is shut down by diffusion or another mechanism, which could be interaction with a binary companion.

**Key words:** asteroseismology – stars: chemically peculiar – stars: oscillations – stars: variables:  $\delta$  Scuti.

## 1 INTRODUCTION

Stars with spectral type A play an important role in stellar astrophysics. The thickness of surface convection zones decreases with increasing temperature, from the deep and efficient hydrogen convection zones in late F stars to the very weak helium convection zones of B stars (Cantiello et al. 2009), making a transition in the A stars. Rotation has a major influence, broadening spectral lines and distorting the star. Indeed, the peak of the angular rotation frequency distribution occurs at A5, where stars commonly rotate at two-thirds of their break-up velocities (Royer, Zorec & Gómez 2007). Exceptions to this are chemically peculiar stars, whose rotation is orders of magnitude slower.

Pulsation is commonplace in late-A stars, where the classical instability strip intersects the main sequence and the  $\delta$  Sct stars

are found. With the photometric precision afforded by the *Kepler* Mission, asteroseismology has enjoyed success with A stars, such as in the discovery of hundreds of  $\delta$  Sct- $\gamma$  Dor hybrid stars (Griğacène et al. 2010; Balona & Dziembowski 2011; Bedding et al. 2014; Van Reeth et al. 2014), the observation of tidally excited modes (Welsh et al. 2011; Thompson et al. 2012) and the determination of the surface-to-core rotation profile of a main-sequence star for the first time (Kurtz et al. 2014). However, with the exception of the roAp stars, pulsation and chemical peculiarity appear to be mutually exclusive. In these high-overtone pulsators, strong dipolar magnetic fields suppress the low-overtone pulsations seen in  $\delta$  Sct stars (Saio 2005) and cause chemical abundance inhomogeneities (Stibbs 1950). Deciding whether or not pulsation and chemical peculiarity are mutually exclusive in the non-magnetic  $\delta$  Sct stars is important for our understanding of the driving mechanism, and is the focus of this paper.

Until now, attempts to decide this question have focused on searching for pulsations in chemically peculiar Am stars. This

\* E-mail: [murphy@physics.usyd.edu.au](mailto:murphy@physics.usyd.edu.au)

method was practical, since classification spectra were obtainable in minutes, whereas time series photometry required days of observations to demonstrate variability. Now, the situation is inverted. *Kepler* has provided light curves of thousands of  $\delta$  Sct stars, but spectra are lacking. Thus, we invert the usual research question: instead of asking whether there are any chemically peculiar stars that pulsate, we search for chemically normal stars in the  $\delta$  Sct instability strip that do *not* pulsate.

The  $\delta$  Sct stars pulsate in low-order pressure (p) modes that are driven by the heat engine ( $\kappa$ ) mechanism operating on the second ionization zone of helium. Their periods range from a few hours to 15 min (Holdsworth et al. 2014), with the hotter and younger stars having the shorter periods. They overlap with the Am stars on the HR diagram, having spectral types around mid-to-late A and early F.

The chemically peculiar Am stars have abnormally strong absorption lines of most metals when compared to the strength of the Balmer lines (the classification of Am stars was described extensively by Gray & Corbally 2009). The abundance anomalies in Am stars are thought to result from atomic diffusion: atoms with many absorption lines near flux maximum are radiatively levitated within the star, while those with few lines are easily ionized into argon-like configurations and sink (Baglin et al. 1973). In the absence of efficient mixing mechanisms, most transition metals become overabundant near the surface. Turbulence opposes the elemental segregation, but is negligible in slow rotators, hence the Am stars are observed with  $v \sin i \lesssim 100 \text{ km s}^{-1}$  (Slettebak 1954, 1955). The settled elements include Ca, Sc and He. The first two allow the Am stars to be distinguished from generic metal-rich stars, while the latter has important consequences for pulsational driving.

For nearly two decades, it was thought that Am stars did not pulsate. Breger (1970) first observed the apparent non-overlap between Am peculiarities and  $\delta$  Sct pulsation. The observations supported theory: gravitational settling of helium in slow rotators was thought to inhibit  $\delta$  Sct pulsations (Baglin et al. 1973). Several counterexamples to Breger’s observations were put forward, but each was dismissed (Kurtz et al. 1976), until the classical Am star HD 1097 was found to pulsate (Kurtz 1989). Dozens of pulsating Am stars are now known (Smalley et al. 2011), but it remains the case that the majority of Am stars do not pulsate. Attempts to explain pulsating Am stars have involved modelling an Fe-peak opacity bump at  $\sim 200\,000 \text{ K}$  (Richer, Michaud & Turcotte 2000) and the incorporation of additional mixing mechanisms that downscale the abundance anomalies in Am star models to be more in line with observations (Turcotte et al. 2000; Théado et al. 2009).

The existence of pulsations in some Am stars led Catanzaro & Balona (2012) to describe ‘the helium problem in Am stars’ in their eponymous paper. Here, we show that as far as chemically normal stars are concerned, the paucity of non-pulsators in the  $\delta$  Sct instability strip is in accordance with theory.

## 2 METHOD

### 2.1 Overview

Our method was to select non- $\delta$  Sct stars observed by *Kepler* and to determine whether they lie in the  $\delta$  Sct instability strip. The selection was made in the absence of p modes – low-frequency variability from g modes or rotation was ignored in the selection, as further discussed in Section 2.2. Note that the non- $\delta$  Sct stars lying outside of the instability strip do not pulsate because they are either too hot, such that the He II partial ionization zone lies too close

to the surface to drive pulsation efficiently, or too cool, such that the surface convection zone is so deep as to dampen the pulsation completely.

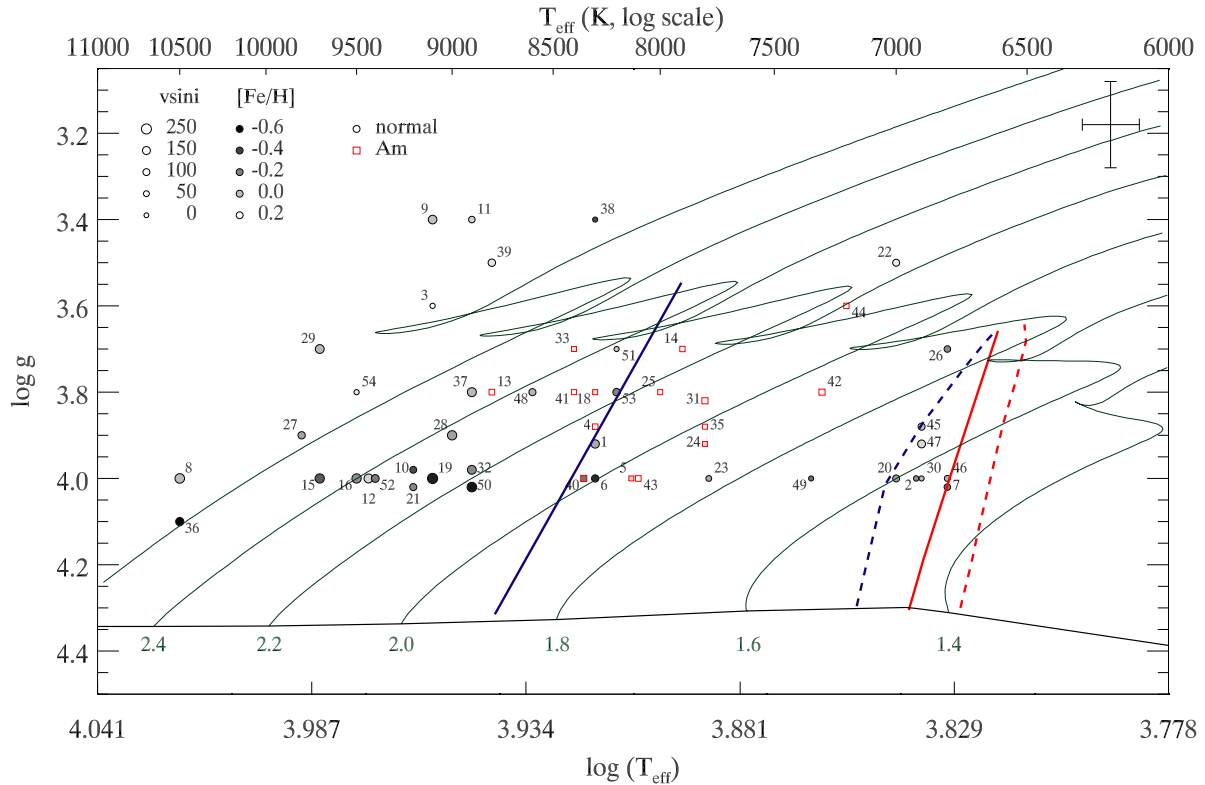
Determining whether a star lies in the instability strip requires an accurate measurement of effective temperature but only an approximate surface gravity. As shown in Fig. 1, the  $\delta$  Sct instability strip occupies the full main-sequence band, and even some pre- and post-main-sequence  $\delta$  Sct stars are known (see e.g. Lenz et al. 2010; Casey 2011; Zwintz, Casey & Guenther 2014), reducing the importance of a precise surface gravity. Furthermore, metallicity affects both evolutionary tracks and instability strip boundaries of  $\delta$  Sct stars, but the stars in our sample had metallicities typically no more than  $\pm 0.5$  dex from solar. Since the former effect is the greater of the two, but is reflected in the observed  $T_{\text{eff}}$  of the star, we focused our efforts on constraining the stellar  $T_{\text{eff}}$ .

Once the  $T_{\text{eff}}$  of each star was determined, a reasonable approximation to  $\log g$  allowed us to place the star on a  $T_{\text{eff}}\text{--}\log g$  diagram and evaluate its position relative to the instability strip. We used instability strip boundaries for stars of solar metallicity based on Dupret et al. (2005), but calculated the  $\delta$  Sct boundaries for all unstable modes that have  $\ell \leq 2$ . Our boundaries are thus wider than conservative ones computed for radial modes only. We used time-dependent convection with a mixing length theory (MLT) parameter  $\alpha_{\text{MLT}} = 1.8$ . This is the number of pressure scaleheights travelled by a parcel of convective gas. We used evolutionary tracks computed with the same physics (Grigahcène et al. 2005).

### 2.2 Target selection

We analysed the pulsational content of *Kepler* light curves of all bright ( $V \lesssim 10$ ) stars whose  $T_{\text{eff}}$  values in the Kepler Input Catalogue (KIC; Brown et al. 2011) indicated that they were in or near the  $\delta$  Sct instability strip. We put the ‘non-pulsator’ limit at  $50 \mu\text{mag}$ , which corresponds to the maximum noise levels expected in Fourier transforms of *Kepler* light curves (see Murphy 2014, ch. 1.3), and applied it to the p-mode frequency regime ( $\sim 5$  to  $50 \text{ d}^{-1}$ ). Murphy (2014) found that 44 per cent of stars in the  $\delta$  Sct instability strip are non- $\delta$  Sct stars by this definition. There is no theoretical exclusion between Am stars and gravity-mode (g-mode) oscillations, such as those seen in  $\gamma$  Dor stars, or between g modes and p modes in the same star. Indeed,  $\gamma$  Dor- $\delta$  Sct hybrids are common (Hareter 2012). Thus, we did not consider g modes in our selection, and so any peaks below  $5 \text{ d}^{-1}$  were not considered, though we do discuss these in Section 3. We did not explicitly look for roAp oscillations, which can be found at late-A spectral types, since Ap stars would be detected in spectroscopic investigations and later filtered out.

In our Fourier analysis, we used *Kepler* long-cadence (LC) data processed with the msMAP pipeline (see e.g. Smith et al. 2012; Stumpe et al. 2012). The LC data have a 29.45-min cadence, and a corresponding Nyquist frequency of  $24.4 \text{ d}^{-1}$ . However, our analysis is not hindered by Nyquist ambiguity. If any of our targets were p-mode oscillators, we would see either their real pulsation frequencies or their Nyquist aliases in the range  $0\text{--}24.4 \text{ d}^{-1}$ . Murphy, Shibahashi & Kurtz (2013a) showed how the periodic modulation of the sampling times of *Kepler* data, due to the orbital motion of the satellite around the Sun, alleviates Nyquist ambiguity entirely, and the real pulsation frequency can be recovered. Hence, LC data are adequate for our study.



**Figure 1.**  $T_{\text{eff}}$ – $\log g$  diagram of 54 non- $\delta$  Sct stars. Green lines are evolutionary tracks computed with time-dependent convection models. The corresponding masses in  $M_{\odot}$  are written beneath the ZAMS (black line). The blue and red edges of the  $\delta$  Sct instability strip are represented by solid blue and red lines. Similarly, the  $\gamma$  Dor instability strip is represented by dashed lines. The two instability strips cover the full main-sequence band, hence for a main-sequence star pulsational instability is mostly determined by the effective temperature. We plot stellar positions of our sample with spectroscopic  $T_{\text{eff}}$  and  $\log g$  values from Niemczura et al. (2015). Filled colour symbol indicates  $[\text{Fe}/\text{H}]$ , and symbol size is proportional to  $v \sin i$ . Red squares are Am stars, while black circles are chemically normal stars. Typical error bars are represented by the point in the top right. The small numbers by each symbol indicate the Star# from Table 1, as discussed in Section 2.4.

### 2.3 Temperature determinations

Further observations of the non- $\delta$  Sct stars were necessary to confirm that they lie in the instability strip because KIC temperatures are inaccurate for hot ( $T_{\text{eff}} \gtrsim 6500$  K) stars (Pinsonneault et al. 2012). For this paper, we made additional observations with the HERMES spectrograph (Raskin et al. 2011) at the 1.2-m Mercator telescope on La Palma. The resulting spectra were collated with spectra of A and F stars from other projects that have been analysed by Niemczura et al. (2015). We use their atmospheric parameters directly. We also determined temperatures from spectral energy distribution (SED) fitting, and from the revised KIC (Huber et al. 2014). These two additional methods of determining temperature were used to verify the spectroscopic results. Our total sample consisted of 54 non- $\delta$  Sct stars that have HERMES spectra.

#### 2.3.1 High-resolution spectroscopy

The Balmer lines of hydrogen and lines of Fe I are sensitive to temperature in the A stars. This sensitivity is utilized during spectroscopic analysis to determine the effective temperature to a precision of  $\sim 100$  K. We used temperatures obtained in this manner by Niemczura et al. (2015), along with  $[\text{Fe}/\text{H}]$ ,  $\log g$  and  $v \sin i$ .

#### 2.3.2 Spectral energy distributions

An independent measure of temperature comes from SEDs. The majority of the SED temperatures used here also come from Niemczura et al. (2015), with the exception of six double-lined spectroscopic binary systems (SB2s) that were not reported there. For those, we followed the same method as Niemczura et al. (2015), that is, we obtained approximate SEDs from the following available photometry: 2MASS (Skrutskie et al. 2006), Tycho  $B$  and  $V$  magnitudes (Hoeg et al. 1997), USNO-B1  $R$  magnitudes (Monet et al. 2003), TASS  $I$  magnitudes (Droege et al. 2006), Geneva photometry (Rufener 1989) and CMC14  $r'$  magnitudes (Evans, Irwin & Helmer 2002).

Effective temperatures were determined by fitting Kurucz (1993) model fluxes to the de-reddened SEDs. The model fluxes were convolved with photometric filter response functions. A weighted Levenberg–Marquardt non-linear least-squares fitting procedure was used to find the solution that minimized the difference between the observed and model fluxes. Since  $\log g$  and metallicity  $[M/\text{H}]$  are poorly constrained by our SEDs, we fixed  $\log g = 4.0$  and  $[M/\text{H}] = 0.0$  dex for all the fits. The uncertainties in  $T_{\text{eff}}$  include the formal least-squares error and adopted uncertainties in  $E(B - V)$  of  $\pm 0.02$  mag,  $\log g$  of  $\pm 0.5$  dex and  $[M/\text{H}]$  of  $\pm 0.5$  dex added in quadrature.



### 2.3.3 Revised KIC temperatures

Huber et al. (2014) incorporated photometry and spectroscopy in their revision of KIC parameters. They provided  $T_{\text{eff}}$ ,  $\log g$  and  $[\text{Fe}/\text{H}]$  along with uncertainties for all A stars observed by *Kepler*.

### 2.4 Collation of atmospheric parameters

We have collated atmospheric parameters for the 54 targets into Table 1. These are all non- $\delta$  Sct stars down to our threshold of 50  $\mu\text{mag}$ , but some are  $\gamma$  Dor stars. We also give the spectral types, which were determined by smoothing the HERMES spectra to classification resolution (1.8 Å per 2 pixel) and comparing against a series of high- and low- $v \sin i$  standards collected by R.O. Gray and one of us (SJM; Murphy et al., in preparation). The spectral types indicate which stars are Am.

We assume that stars that appear chemically normal in spectroscopy have homogeneous abundances. Rapidly rotating A stars are well mixed, so the metallicity measured in the line forming region by spectroscopy is equivalent to that in deeper regions as probed by pulsation. An exception would be the  $\lambda$  Boo stars, which often rotate rapidly and have surface peculiarities that are presumably replenished from accretion of circumstellar material (Venn & Lambert 1990; King 1994), or that are short lived (Turcotte & Charbonneau 1993; Kamp & Paunzen 2002). With asteroseismology it is possible to distinguish between surface peculiarities, like the selective metal weakness characteristic of  $\lambda$  Boo stars, or global metal weakness common in Pop II stars, as was done by Murphy et al. (2013b). As yet, no  $\delta$  Sct star has been shown to have a peculiar interior with a normal abundance pattern at the surface.

In Fig. 1, we show the locations of stars in the  $T_{\text{eff}}\text{--}\log g$  diagram, using values from high-resolution spectroscopy. We also show  $[\text{Fe}/\text{H}]$  and  $v \sin i$ . Some stars overlapped on this plot due to the quantized  $T_{\text{eff}}$  and  $\log g$  intervals used in the spectroscopic analysis and so they have been offset by up to  $\pm 0.02$  dex in  $\log g$  for clarity – a value smaller than the observational uncertainty.

It is clear that the majority of our non- $\delta$  Sct stars are hotter than the blue edge of the instability strip, although none is cooler than the red edge. About a third of the sample lie within the  $\delta$  Sct instability strip. Many of these stars are Am stars, which is not surprising because it agrees with the idea that Am stars have insufficient helium in the driving region to excite pulsation. However, there are several chemically normal stars inside the instability strip that are not pulsating, contrary to expectation.

## 3 DISCUSSION

We selected stars for further investigation if they were located within the instability strip boundaries (Fig. 1) and were not Am stars. A total of 13 stars met this criterion. Neither their spectral types, nor their abundances (Niemićzura et al. 2015) indicate chemical peculiarity. They are listed in Table 2, and their locations in the  $T_{\text{eff}}\text{--}\log g$  diagram are shown in Fig. 2.

### 3.1 Non-pulsators inside the $\delta$ Sct instability strip

In Fig. 2, the non-pulsators generally lie near the edges of the  $\delta$  Sct instability strip. The three exceptions are #22, #23 and #49. The remaining stars are at most  $\sim 200$  K ( $2\sigma$ ) from the instability strip boundaries, so their placement inside the  $\delta$  Sct instability strip is still uncertain. Stars #23 and #49 are double-lined spectroscopic binaries (SB2 systems), for which spectroscopic temperatures are still

to be determined. In Fig. 2, they are shown using their SED temperatures, which do not resolve the components and may therefore be incorrect. Star #22 is not known to be a binary. Evolutionary tracks place it in the hydrogen-shell-burning stage of evolution, where asteroseismic models predict a large number of pulsation modes to be excited (Lenz et al. 2010), yet it shows none.

The low  $\log g$  of Star #22 raises suspicions that it might be a member of an undetected binary system. Binaries can easily give discrepant temperatures if treated as single stars, even for slow rotators where the lines are easier to disentangle. KOI-54 (not in our sample) is a prime example. It is a highly eccentric binary system, consisting of two slowly rotating stars ( $v \sin i = 7.5$  and  $4.5 \text{ km s}^{-1}$ ; Welsh et al. 2011). Both components lie just bluewards of the blue edge of the  $\delta$  Sct instability strip, having  $T_{\text{eff}} = 8500$  and  $8800$  K. When Niemićzura et al. (2015) observed this system it was at conjunction, and analysis of the single-lined spectrum yielded  $T_{\text{eff}} = 8400$  K. Do similar arguments apply for Star #22? This star is a moderate rotator with  $v \sin i \sim 100 \text{ km s}^{-1}$ , for which small amounts of spectral contamination could still go undetected but the derived  $T_{\text{eff}}$  would need to be wrong by around 500 K (i.e.  $5\sigma$ , for the 100-K spectroscopic uncertainties) to shift Star #22 outside of the instability strip. Appendix A shows that this is unlikely, if Star #22 were hypothesized to be a long-period ( $>20$ -d) binary.

SB2 systems are more obvious when the orbital period is shorter and the orbital velocities are greater. However, there is a lower limit on orbital periods before tidal effects come into play. Am stars are commonly found in close binary systems.<sup>1</sup> It is thought that the presence of a close binary companion provides the tidal braking necessary to slow rotation. Atomic diffusion can then operate relatively uninhibited by mixing processes associated with rotation, and the star becomes an Am star. Spectra showing obvious Am peculiarities were excluded from our analysis, thus short-period binaries would not lead to chemically normal non-pulsators inside the instability strip, and our justification of a 20-d minimum orbital period in the simulations is justified.

None the less, it is noteworthy that the known SB2s in our sample do have low  $v \sin i$ . It remains puzzling that they are not Am stars. We might postulate that these stars are rapid rotators seen at low inclination, but confirmation will require detailed analyses of the SB2 systems and additional radial velocity follow-up.

Let us suppose that a close binary does not produce an Am star for some reason, and might masquerade as a non- $\delta$  Sct star inside the instability strip in our sample. One way we might detect such a system is in the *Kepler* light curves, even if the stars do not eclipse each other, from some or all of: tidal distortion, heating and Doppler beaming (Faigler & Mazeh 2011; Tal-Or, Faigler & Mazeh 2014). They usually produce a Fourier series of sharp peaks at multiples of the orbital frequency. We provide Fourier transforms of the light curves of each star in Fig. 3, which we inspected for binary signatures. No additional binaries were detected; low-frequency variations in a few of the stars (e.g. #22, #23, #26 and #45) were temporally variant and gave broad peaks, perhaps arising from rotation instead (Balona 2014). We conclude that close binarity has not led to grossly incorrect temperatures for stars in our sample.

We return our discussion to the one chemically normal star in our sample (#22 = KIC 612823 = HD 184521) that does not appear

<sup>1</sup> The binary fraction of Am stars is at least 60–65 per cent (Debernardi et al. 2000; Carquillat & Prieur 2007; Smalley et al. 2014), compared to just 35 per cent for the A stars as a whole (Abt 2009). See Murphy (2014) for a review.

**Table 1.** Parameters for the targets. Column headers use the same conventions as in the text, with new additions of: Star# for the ID of each star; Spec. to denote values from high-resolution spectroscopy; and Sp. T. for spectral type. A superscript <sup>B</sup> after a star number indicates that it is an SB2 system. An asterisk in the final column signifies a note to the spectral type, as determined in Niemczura et al. (2015). Spectroscopic uncertainties on  $T_{\text{eff}}$  and  $\log g$  are 100 K and 0.1 dex, respectively. [Fe/H] uncertainties range from 0.07 to 0.15 dex.  $v \sin i$  uncertainties are typically  $\sim 5$  per cent or  $2 \text{ km s}^{-1}$  – whichever the greater.

Star #	SIMBAD name	KIC ID	Kp (mag)	Spec. $T_{\text{eff}}$ (K)	Spec. $\log g$ (cgs)	$v \sin i$ ( $\text{km s}^{-1}$ )	Spec. [Fe/H] (dex)	Sp. T.
1	BD+36 3554	1294756	9.1	8300	3.9	170	−0.06	A3 IV
2 <sup>B</sup>	BD+37 3340	2695344	9.6	6921	4.0	30	−0.16	F2 V
3	BD+38 3558	3231985	9.3	9100	3.6	22	0.29	A4 IV Ca weak (A3)*
4	BD+38 3565	3441230	9.9	8300	3.9	36	0.30	Am kA2hA5mF0 V
5 <sup>B</sup>	BD+38 3679	3656913	9.9	8132	4.0	10	0.07	Am kA2hA6mF0 IV
6	BD+38 3594	3851151	9.8	8300	4.0	119	−0.47	A3 V
7	BD+38 3468	3942392	9.9	6800	4.0	82	−0.22	F2 Vs
8	BD+38 3580	4056136	9.6	10 500	4.0	227	−0.01	B9 IV-Vnn
9	TYC 3139-1375-1	4572373	9.9	9100	3.4	184	0.00	A3 Vnn (wk met A2)*
10	HD 226221	4681323	9.1	9200	4.0	99	−0.36	A1 IV−s*
11	BD+39 3743	4831769	9.6	8900	3.4	84	0.06	A3 Va
12 <sup>B</sup>	HD 182442	4832225	9.1	9436	4.0	200	0.07	B9.5 V
13	HD 225365	5199439	9.6	8800	3.8	40	0.27	Am: kA3hA5mA5 (IV)s
14	HD 225410	5200084	9.2	7900	3.7	27	0.43	Am kA3hA6mF1 (IV)*
15	HD 225785	5294231	9.8	9700	4.0	213	−0.32	A0 IVn
16	BD+40 3639	5524045	9.5	9500	4.0	215	−0.15	A0.5 Va <sup>+</sup>
17	TYC 3125-1342-1	5525210	9.9	6800	4.1	90		F1 V†
18	HD 225463	5633448	9.0	8300	3.8	13	0.13	Am: kA3hA4mA7 V*
19	HD 182192	5786771	9.1	9100	4.0	257	−0.50	A0.5nn:*
20	HD 181654	5954264	8.2	7000	4.0	105	−0.11	F1 IV-V
21	HD 177061	6106152	8.1	9200	4.0	108	−0.17	A3 IV wk met (A1)
22	HD 184521	6128236	8.9	7000	3.5	106	0.14	F0 IV <sup>+</sup>
23 <sup>B</sup>	HD 179337	6192566	9.4	7783	4.0	50	−0.08	A6 IV-V
24	TYC 3143-1942-1	6292398	9.8	7800	3.9	8	0.09	Am: kA3hA7mA7 V
25	BD+41 3418	6292925	9.7	8000	3.8	15	0.16	Am: kA2.5hA3mA7 (IV)
26	HD 225711	6380579	9.8	6800	3.7	83	−0.17	F2 Vs
27	HD 185265	6450107	7.6	9800	3.9	121	−0.08	A1 IV-s
28	HD 177328	7345479	7.9	9000	3.9	215	−0.09	A2 Vnn
29	HD 184024	7530366	8.4	9700	3.7	193	−0.02	A0.5 IVnn
30	TYC 3130-497-1	7661054	9.9	6900	4.0	16	−0.02	F2.5 V
31	HD 186995	7767565	9.3	7800	3.8	65	0.41	Am kA5hA7mF1 IV
32	HD 182952	8027456	9.7	8900	4.0	194	−0.17	A1 V
33	HD 187091	8112039	8.4	8400	3.7	9	0.12	Am: kA3hA5mA5 (IV)s
34	HD 173978	8211500	8.1	7800	3.8	93	0.15	A5 IV†
35	HD 188911	8323104	9.7	7800	3.9	10	0.20	Am kA2.5hA6mA7 (IV)
36	HD 177152	8351193	7.6	10 500	4.1	162	−1.27	B9.5:*
37	HD 184023	8367661	8.7	8900	3.8	201	−0.02	A2 IVn
38	HD 188539	8386982	9.8	8300	3.4	14	−0.37	A4 IV/V:*
39	HD 181598	8489712	8.6	8800	3.5	126	0.12	A2 IVs
40 <sup>B</sup>	HD 184482	8692626	8.3	8354	4.0	65	−0.24	Am: kA2hA4mA6 (IV)*
41	HD 187254	8703413	8.7	8400	3.8	14	0.59	Am kA3hA5mA9 (IV)s
42	HD 190165	9117875	7.5	7300	3.8	61	0.51	Am kA3hF0.5mF3 (III)*
43	HD 180239	9147002	9.9	8100	4.0	42	0.35	Am kA3hA5mF3 (IV)*
44	HD 176843	9204718	8.8	7200	3.6	28	0.21	Am kA3hA9mF1 V
45	HD 185329	9286638	7.3	6900	3.9	148	0.08	F2 V wk met (F0)
46	HD 188713	9300946	9.9	6800	4.0	58	−0.04	F2 Vs*
47	BD+45 2978	9419182	9.2	6900	3.9	110	0.02	F2 V
48	HD 178508	9699848	9.1	8600	3.8	110	−0.03	A2.5 Vn
49 <sup>B</sup>	TYC 3561-609-1	10026614	9.8	7345	4.0	15	−0.26	F4 V:
50	HD 179069	10263800	9.8	8900	4.0	230	−0.54	A0.5 Vn
51	BD+47 2777	10721930	9.7	8200	3.7	16	0.03	A5 Vs met str (A6)*
52	HD 183257	11189959	8.2	9400	4.0	143	−0.22	A1 Va <sup>+</sup> n
53	BD+49 3007	11506607	9.7	8200	3.8	129	−0.19	A3 V
54	HD 179617	12153021	8.7	9500	3.8	20	0.13	A2 Va <sup>+</sup> s

Notes: \*Notes on spectral type by star number are given in Appendix B.

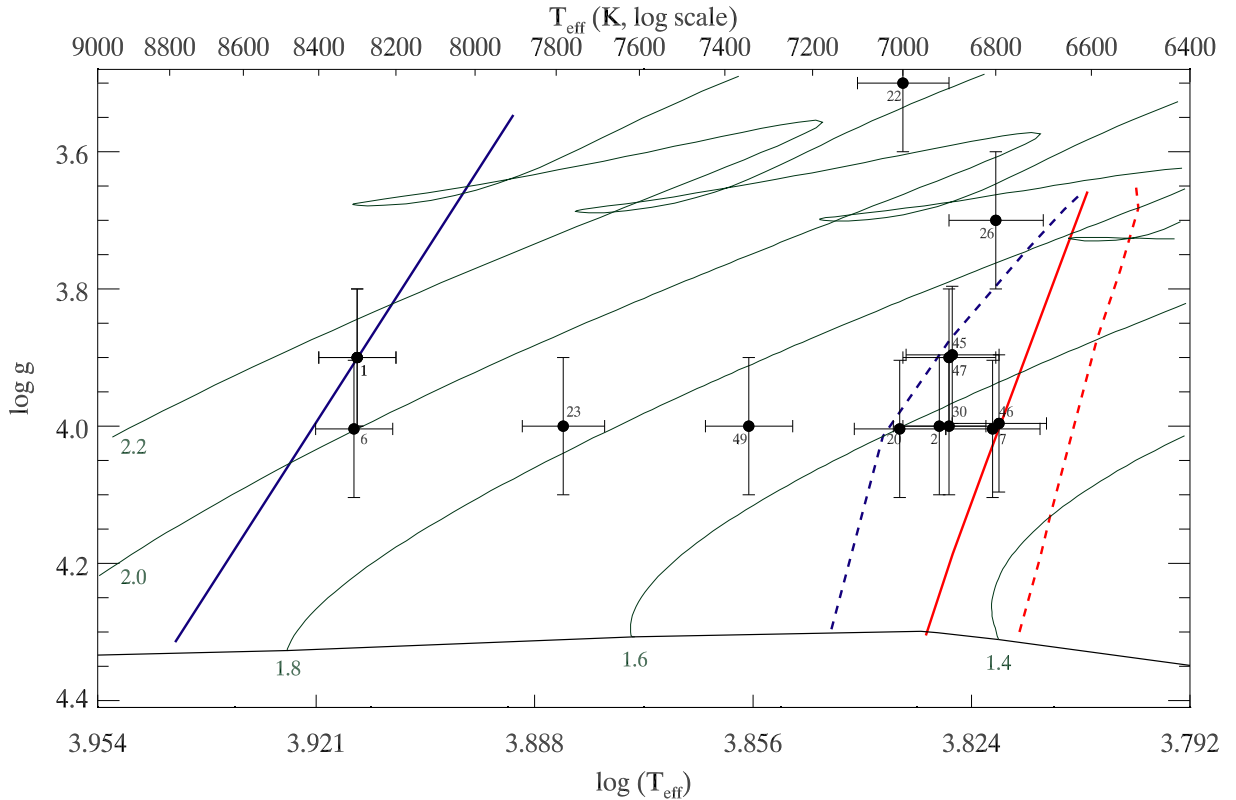
†Stars #17 and #34 were removed from the analysis hereafter due to their accidental inclusion in an early draft on the stars with HERMES spectra (Niemczura et al. 2015).

**Table 2.** Atmospheric parameters of stars that lie within the instability strip. Superscripted <sup>B</sup> characters after the Star# indicate SB2 systems. SED  $T_{\text{eff}}$  values are shown, which agree with spectroscopic  $T_{\text{eff}}$  values to  $1\sigma$ . Hence, we use these for the SB2 systems where no spectroscopic  $T_{\text{eff}}$  is yet available, and we assume  $\log g = 4.0$ . For these,  $v \sin i$  values are only approximate and are based on the primary star.

Star #	KIC ID	Spec. $T_{\text{eff}}$ (K)	Spec. $\log g$ (cgs)	SED $T_{\text{eff}}$ (K)	$v \sin i$ (km s <sup>-1</sup> )
1	1294756	8300 $\pm$ 100	3.9 $\pm$ 0.1	8411 $\pm$ 434	170
2 <sup>B</sup>	2695344	—	—	6910 $\pm$ 150	30
6	3851151	8300 $\pm$ 100	4.0 $\pm$ 0.1	8275 $\pm$ 418	119
7	3942392	6800 $\pm$ 100	4.0 $\pm$ 0.1	6935 $\pm$ 306	82
20*	5954264	7000 $\pm$ 100	4.0 $\pm$ 0.1	7057 $\pm$ 311	105
22	6128236	7000 $\pm$ 100	3.5 $\pm$ 0.1	7088 $\pm$ 317	106
23 <sup>B</sup>	6192566	—	—	7850 $\pm$ 210	50
26	6380579	6800 $\pm$ 100	3.9 $\pm$ 0.1	6747 $\pm$ 313	83
30	7661054	6900 $\pm$ 100	4.0 $\pm$ 0.1	6777 $\pm$ 365	16
45 <sup>†</sup>	9286638	6900 $\pm$ 100	3.9 $\pm$ 0.1	6926 $\pm$ 298	148
46	9300946	6800 $\pm$ 100	4.0 $\pm$ 0.1	6912 $\pm$ 374	58
47	9419182	6900 $\pm$ 100	3.9 $\pm$ 0.1	6929 $\pm$ 302	110
49 <sup>B</sup>	10026614	—	—	6610 $\pm$ 130	15

Notes: \* $T_{\text{eff}}$  values are in agreement with published  $T_{\text{eff}} = 6935$  K (Casagrande et al. 2011).

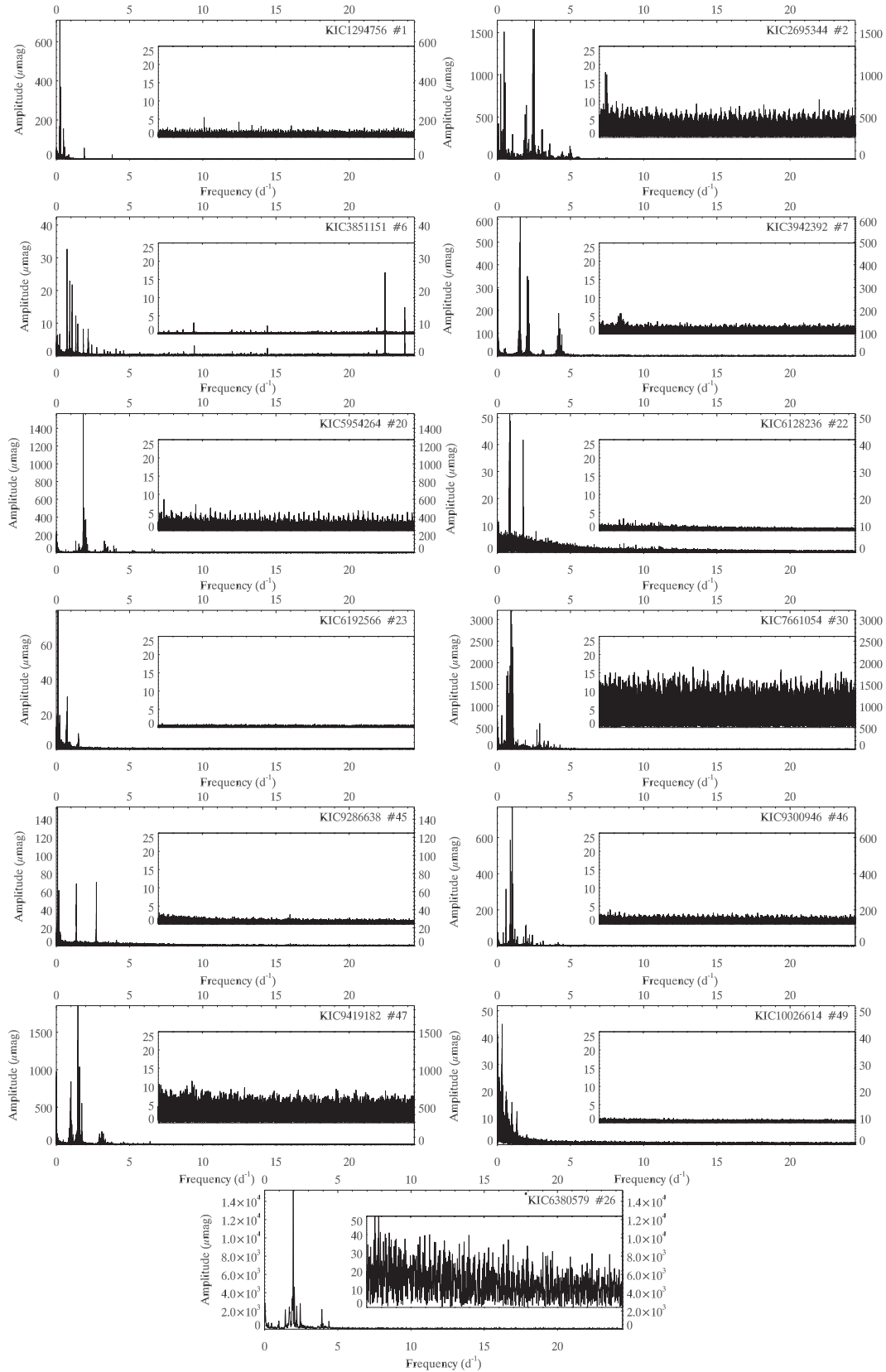
<sup>†</sup> $T_{\text{eff}}$  values are in agreement with published  $T_{\text{eff}} = 6987$  K (Casagrande et al. 2011).



**Figure 2.** Positions of chemically normal, non- $\delta$  Sct stars with  $1\sigma$  error bars. As in Fig. 1, solid blue and red lines are the blue and red edges of the  $\delta$  Sct instability strip, while dashed lines indicate the  $\gamma$  Dor instability strip. Green lines are evolutionary tracks, with masses in  $M_{\odot}$  written beneath the ZAMS (black). The non-pulsators generally lie near the edges of the  $\delta$  Sct instability strip, with exceptions discussed in the text.

to be a binary star, does not pulsate, but does lie in the middle of the  $\delta$  Sct instability strip, albeit in the hydrogen-shell-burning phase. Its temperature according to spectroscopy, SED fitting and revised KIC photometry (Huber et al. 2014) are all in agreement

to 100 K, and place it 500 K from the red edge of the instability strip. Its chemical abundance pattern is normal, hence this is the first confirmed chemically normal, non-pulsator lying inside the  $\delta$  Sct instability strip, and is worthy of further study.



**Figure 3.** Fourier transforms of the light curves of the thirteen stars in Table 2. Star# is written in the upper-right corner. The p-mode region is shown on a zoomed y-scale on the insets, using the same x-scale ( $7\text{--}24.4\text{ d}^{-1}$ ). Clearly some stars are  $\gamma$  Dor stars, but not  $\delta$  Sct stars. For one star (#26, bottom panel), the g-mode amplitudes are so high we pre-whitened the 19 highest peaks for the p-mode inset. Star #6 shows low-amplitude p modes, but with amplitudes below  $20\text{ }\mu\text{mag}$ . It is thus below our  $50\text{-}\mu\text{mag}$  limit, and the discussion in the text is still relevant to this star.

### 3.2 $\gamma$ Dor stars

Seven of the Fourier transforms in Fig. 3 show obvious g-mode oscillations (Stars #2, 20, 7, 30, 46, 47, 26). These are  $\gamma$  Dor stars, whose oscillations are driven by convective flux blocking (Guzik et al. 2000; Dupret et al. 2004). One that does not is Star #23, which is too hot to be a  $\gamma$  Dor star. Stars #6 and #45 have peaks in the frequency range where g modes are typically observed, but the peaks are not typical of  $\gamma$  Dor stars (they are not consecutive overtones of g modes). Finally, Star #6 is far beyond the blue edge of the  $\gamma$  Dor instability strip, so the presence of an irregular series of peaks below  $5 \text{ d}^{-1}$  cannot be explained, unless this is a binary consisting of a  $\gamma$  Dor star and a  $\delta$  Sct star in their respective instability strips, or the convective blocking mechanism continues to operate in hot A stars (Balona 2014). Our observation that the  $\gamma$  Dor pulsators all appear to lie inside the  $\gamma$  Dor instability strip is in disagreement with Uytterhoeven et al. (2011), who showed that KIC photometry places some  $\gamma$  Dor stars well outside the  $\gamma$  Dor instability strip boundaries. Rather, our observations agree with Tkachenko et al. (2013) who constrained the  $T_{\text{eff}}$  of 36  $\gamma$  Dor stars to lie within the  $\gamma$  Dor instability strip with high-resolution spectra. Clearly, high precision on  $T_{\text{eff}}$  is required to place stars with respect to this (narrow) instability strip.

### 3.3 Explaining the lack of p modes

Various mechanisms for limiting pulsation amplitudes exist that might explain the lack of pulsation in our selected stars. One is convection, as we have already mentioned. This probably explains the lack of pulsation in most of the cooler stars in our sample, since they lie within  $2\sigma$  of the red edge of the instability strip. Saturation of the pulsational driving is another. This phenomenon may limit amplitudes in high-amplitude  $\delta$  Sct stars (HADS stars), but it is not a viable explanation for the non-pulsators. A third mechanism is mode coupling. In this scenario, energy is transferred between modes in a parametric resonance (Dziembowski & Krolikowska 1985), and it is of particular importance that this can occur between p and g modes (Buchler, Goupil & Hansen 1997). Seven of the stars in question are g-mode pulsators. Could it be that the observable amplitudes of the g modes, which exist predominantly in the deep interior and do not attain large amplitudes near the surface, result from a transfer of energy from the p modes? We find this to be unlikely for two reasons: (i) it cannot explain the lack of p modes for the stars that show no g-mode oscillations, and (ii)  $\delta$  Sct- $\gamma$  Dor hybrids are common in the *Kepler* data, covering a whole range of pulsation amplitude ratios between the p and the g modes (Grigahcène et al. 2010; Uytterhoeven et al. 2011).

We also considered whether the non- $\delta$  Sct stars might be pulsating in high-degree modes. Modes of higher degrees have diminishing amplitudes due to partial cancellation of nodes and antinodes when integrating over the stellar disc (see Aerts, Christensen-Dalsgaard & Kurtz 2010, fig. 1.5). If the non- $\delta$  Sct stars in the instability strip were pulsating exclusively in high-degree modes, it is possible that their amplitudes as observed by *Kepler* would be below the micro-magnitude noise-level. For stars cooler than 7500 K, there is a substantial photospheric contribution to the noise level, while hotter A stars appear to be limited by instrumental noise (Murphy 2014). Although longer observations could reduce the noise level, *Kepler* is no longer pointing at the original field, and observations similar in precision, duration and continuity are not currently feasible. In addition, we find that the high-degree modes hypothesis unlikely

because there is no known selection mechanism to force high-degree modes and suppress low-degree ones.

Finally, we considered that binarity itself may inhibit the pulsations. Tidally induced pulsations are well studied, not only for p modes (e.g. Hambleton et al. 2013b) but also g modes in main-sequence stars (Fuller & Lai 2012) and white dwarfs (Fuller & Lai 2011). However, tidal damping is also known to occur: Waelkens & Rufener (1983) looked at stars that fall within the  $\beta$  Cep instability strip, and found that those in close binaries did not pulsate. Additionally, Hambleton et al. (2013a) found that around 20 per cent of ‘heartbeat stars’ – eccentric binaries with significant tidal distortion at periastron – have tidally induced pulsation, but also found some heartbeat stars in the  $\gamma$  Dor instability strip with no self-excited g modes, i.e. systems where binarity is damping the high-order g-mode pulsation.

It has recently been established that solar-like oscillations can be suppressed in close binary systems: Springer & Shaviv (2013) found that tidally distorted envelopes, where the density is low, cause rapid dissipation of acoustic waves. In addition, Gaulme et al. (2014) established that the effect of close binarity on stellar rotation velocity can lead to generation of substantial dynamo magnetic fields, which suppress p modes. Both of these mechanisms of tidal damping operate only at very close separation of a few stellar radii. For A stars, separations of a few stellar radii manifest clearly in the Fourier transforms of *Kepler* light curves. Since we do not observe the signatures of close binarity in our non-pulsators, we infer that these two mechanisms of tidal damping are unimportant. Close binarity in A stars also generates Am peculiarities, and the Am stars were already filtered out of our sample.

In summary, although we cannot rule out that tidal damping plays a role in the suppression of p modes in chemically normal non-pulsators, a viable mechanism appears to be lacking. We also considered whether magnetic damping may still be relevant. Vega, the archetypical A star, possesses a magnetic field of  $-0.6 \pm 0.3 \text{ G}$  (Lignières et al. 2009), and it is reasonable to assume chemically normal A stars possess fields of similar strengths, though they would be difficult to detect. Saio (2005) found that a dipole field of 1 kG is required to stabilize low-order p modes, hence magnetic damping is unimportant for all but the strongly magnetic Ap stars.

Guzik et al. (2014) have also studied non-pulsating stars in the  $\delta$  Sct and  $\gamma$  Dor instability strips. Using atmospheric parameters from the original KIC, they found five non-pulsating stars in the  $\delta$  Sct instability strip. The remainder of their 633-star sample were either pulsators (40 per cent) or had temperatures cooler than the red edge of the  $\delta$  Sct instability strip. The five non-pulsators in the  $\delta$  Sct instability strip are very faint, with the brightest having  $K_p = 14.6 \text{ mag}$ , so high-resolution spectroscopic follow-up is impractical and it is not known whether the stars are chemically peculiar.

## 4 CONCLUSIONS

We have examined the distribution of chemically normal, non-pulsating stars in the  $\delta$  Sct instability strip, and found most of them to lie within 200 K of either the blue or red edge. Given typical uncertainties of 100 K, we cannot confidently assert that these stars lie within the instability strip.

We investigated whether undetected binary systems could cause temperature discrepancies when interpreted as single stars (Appendix A). Their spectra would give the appearance of a single star inside the instability strip when in fact they form a composite spectrum of two stars that lie outside the instability strip, and do



not pulsate for this reason. The temperature discrepancy that can be introduced depends on the orbital phase: a 300-K discrepancy is easily obtained at conjunction for moderate rotators. The spectra of rapid rotators can be difficult to normalize correctly, resulting in another ‘free parameter’ that can make binary systems difficult to detect.

We did find one chemically normal star that does not appear to be in a binary system, does not pulsate, and lies in the middle of the  $\delta$  Sct instability strip, albeit in the post-main-sequence evolutionary phase. This star is the first of its kind. We considered multiple mechanisms that might inhibit pulsation in this star, including convective damping, saturation of the pulsational driving mechanism, mode coupling to g modes that are only visible in the interior, pulsation exclusively in high-degree modes whose amplitudes diminish when integrated over the entire stellar disc, magnetic damping and tidal damping. None of these mechanisms gives a satisfactory explanation.

While this individual star is a challenge to pulsation theory, the presence of only one chemically normal non-pulsator lying conclusively inside the  $\delta$  Sct instability strip indicates that these stars are rare. The essentially null result of Guzik et al. (2014) confirms this fact. Indeed, if the exceptional star can be disqualified in a more detailed analysis, it may be that no chemically normal, non-pulsator occupies this region of the HR diagram.

We conclude by drawing a parallel with the pulsating DAV white dwarfs (DAVs or ZZ Ceti stars). Efforts to define the theoretical edges of the DAV instability strip required abandonment of the old ‘frozen convection’ models because of the rapid response of the convection zone to the pulsational perturbation (Brickhill 1991). However, convective damping then led to an observed red edge that was hotter than the theoretical one, and to the suspicion that DAVs might pulsate beyond the observed red edge, at amplitudes lower than that could be detected (see Kotak et al. 2002, for a review). Mukadam et al. (2004) found that the DAV instability strip to be impure, when they used SDSS data as a homogeneous source of atmospheric parameters and found non-pulsators inside instability strip. Kepler (2007) later attributed this to the inaccuracy of those data, and said ‘The question of the purity of the ZZ Ceti instability strip also depends on the accuracy of determination of the effective temperatures and gravities, as the instability strip ranges only around 1200 K in  $T_{\text{eff}}$  and depends on gravity.’ Detailed investigation in high-resolution spectroscopic studies (Bergeron et al. 1995, 2004; Gianninas, Bergeron & Fontaine 2005, 2006) showed the DAV instability strip to be pure, i.e. all stars within the instability strip pulsate and those outside it do not.

The paucity of stars in the  $\delta$  Sct instability strip without p modes brings us to the same conclusion about these stars: the  $\delta$  Sct instability strip is pure, unless pulsation is shut down by diffusion or another mechanism, which could be interactions with a companion star.

## ACKNOWLEDGEMENTS

This research was supported by the Australian Research Council. Funding for the Stellar Astrophysics Centre is provided by the Danish National Research Foundation (grant agreement no.: DNRF106). The research is supported by the ASTERISK project (ASTERoseismic Investigations with SONG and Kepler) funded by the European Research Council (grant agreement no.: 267864). EN acknowledges support from NCN grant 2011/01/B/ST9/05448. We are grateful to the entire Kepler team for such exquisite data. This

research has made use of the SIMBAD data base, operated at CDS, Strasbourg, France.

SJM would like to thank the SifA asteroseismology group plus Hideyuki Saio and Jim Fuller for useful discussions. This work is a continuation of a preliminary analysis by SJM in his PhD thesis.

## REFERENCES

- Abt H. A., 2009, *AJ*, 138, 28  
 Abt H. A., Morrell N. I., 1995, *ApJS*, 99, 135  
 Aerts C., Christensen-Dalsgaard J., Kurtz D. W., 2010, *Asteroseismology*. Springer-Verlag, Berlin  
 Baglin A., Breger M., Chevalier C., Hauck B., Le Contel J. M., Sareyan J. P., Valtier J. C., 1973, *A&A*, 23, 221  
 Balona L. A., 2014, *MNRAS*, 437, 1476  
 Balona L. A., Dziembowski W. A., 2011, *MNRAS*, 417, 591  
 Barry D. C., 1970, *ApJS*, 19, 281  
 Bedding T. R., Murphy S. J., Colman I. L., Kurtz D. W., 2014, preprint ([arXiv:e-prints](https://arxiv.org/abs/1408.0001))  
 Bergeron P., Wesemael F., Lamontagne R., Fontaine G., Saffer R. A., Allard N. F., 1995, *ApJ*, 449, 258  
 Bergeron P., Fontaine G., Billères M., Boudreault S., Green E. M., 2004, *ApJ*, 600, 404  
 Breger M., 1970, *ApJ*, 162, 597  
 Brickhill A. J., 1991, *MNRAS*, 251, 673  
 Brown T. M., Latham D. W., Everett M. E., Esquerdo G. A., 2011, *AJ*, 142, 112  
 Buchler J. R., Goupil M., Hansen C. J., 1997, *A&A*, 321, 159  
 Cantiello M. et al., 2009, *A&A*, 499, 279  
 Carquillat J.-M., Prieur J.-L., 2007, *MNRAS*, 380, 1064  
 Casagrande L., Schönrich R., Asplund M., Cassisi S., Ramírez I., Meléndez J., Bensby T., Feltzing S., 2011, *A&A*, 530, A138  
 Casey M. P., 2011, PhD thesis, Saint Mary’s University, Canada  
 Castelli F., Hubrig S., 2004, *A&A*, 425, 263  
 Catanzaro G., Balona L. A., 2012, *MNRAS*, 421, 1222  
 Debernardi Y., 2000, in Reipurth B., Zinnecker H., eds, *Proc. IAU Symp.* 200, Birth and Evolution of Binary Stars. Astron. Soc. Pac., San Francisco, p. 161  
 Debernardi Y., Mermilliod J.-C., Carquillat J.-M., Ginestet N., 2000, *A&A*, 354, 881  
 Droege T. F., Richmond M. W., Sallman M. P., Creager R. P., 2006, *PASP*, 118, 1666  
 Dupret M.-A., Grigahcène A., Garrido R., Gabriel M., Scuflaire R., 2004, *A&A*, 414, L17  
 Dupret M.-A., Grigahcène A., Garrido R., Gabriel M., Scuflaire R., 2005, *A&A*, 435, 927  
 Dziembowski W., Krolikowska M., 1985, *Acta Astron.*, 35, 5  
 Evans D. W., Irwin M. J., Helmer L., 2002, *A&A*, 395, 347  
 Faigler S., Mazeh T., 2011, *MNRAS*, 415, 3921  
 Fuller J., Lai D., 2011, *MNRAS*, 412, 1331  
 Fuller J., Lai D., 2012, *MNRAS*, 420, 3126  
 Gaulme P., Jackiewicz J., Appourchaux T., Mosser B., 2014, *ApJ*, 785, 5  
 Gebran M., Vick M., Monier R., Fossati L., 2010, *A&A*, 523, A71  
 Gianninas A., Bergeron P., Fontaine G., 2005, *ApJ*, 631, 1100  
 Gianninas A., Bergeron P., Fontaine G., 2006, *AJ*, 132, 831  
 Gray R. O., 1999, *Astrophysics Source Code Library*, record ascl:9910.002  
 Gray R. O., Corbally J. C., 2009, *Stellar Spectral Classification*. Princeton Univ. Press, Princeton, NJ  
 Grigahcène A., Dupret M.-A., Gabriel M., Garrido R., Scuflaire R., 2005, *A&A*, 434, 1055  
 Grigahcène A. et al., 2010, *Astron. Nachr.*, 331, 989  
 Guzik J. A., Kaye A. B., Bradley P. A., Cox A. N., Neuforge C., 2000, *ApJ*, 542, L57  
 Guzik J. A., Bradley P. A., Jackiewicz J., Uytterhoeven K., Kinemuchi K., 2014, preprint ([arXiv:e-prints](https://arxiv.org/abs/1408.0001))



- Hambleton K. M. et al., 2013a, in Pavlovski K., Tkachenko A., Torres G., eds, EAS Publ. Ser. Vol. 64, Physics of Eclipsing Binaries: Heart-beat Stars and Tidally Induced Pulsations. Cambridge Univ. Press, Cambridge, p. 285
- Hambleton K. M. et al., 2013b, MNRAS, 434, 925
- Hareter M., 2012, Astron. Nachr., 333, 1048
- Hoeg E. et al., 1997, A&A, 323, L57
- Holdsworth D. L. et al., 2014, MNRAS, 439, 2078
- Huber D. et al., 2014, ApJS, 211, 2
- Kamp I., Paunzen E., 2002, MNRAS, 335, L45
- Kepler S. O., 2007, Commun. Asteroseismol., 150, 221
- King J. R., 1994, MNRAS, 269, 209
- Kotak R., van Kerkwijk M. H., Clemens J. C., Bida T. A., 2002, A&A, 391, 1005
- Kurtz D. W., 1989, MNRAS, 238, 1077
- Kurtz D. W., Breger M., Evans S. W., Sandmann W. H., 1976, ApJ, 207, 181
- Kurtz D. W., Saio H., Takata M., Shibahashi H., Murphy S. J., Sekii T., 2014, MNRAS, 444, 102
- Kurucz R., 1993, Kurucz CD-ROM No. 13. Smithsonian Astrophysical Observatory, Cambridge, MA
- Lenz P., Pamyatnykh A. A., Zdravkov T., Breger M., 2010, A&A, 509, A90
- Lignières F., Petit P., Böhm T., Aurière M., 2009, A&A, 500, L41
- Monet D. G. et al., 2003, AJ, 125, 984
- Mukadam A. S., Winget D. E., von Hippel T., Montgomery M. H., Kepler S. O., Costa A. F. M., 2004, ApJ, 612, 1052
- Murphy S. J., 2014, PhD thesis, Univ. Central Lancashire
- Murphy S. J., Shibahashi H., Kurtz D. W., 2013a, MNRAS, 430, 2986
- Murphy S. J. et al., 2013b, MNRAS, 432, 2284
- Niemczura E., Murphy S. J., Smalley B., Uytterhoeven K., Pigulski A., Lehmann H. A. E., 2015, MNRAS, in press
- Peterson D. M. et al., 2006, Nature, 440, 896
- Pinsonneault M. H., An D., Molenda-Žakowicz J., Chaplin W. J., Metcalfe T. S., Bruntt H., 2012, ApJS, 199, 30
- Raskin G. et al., 2011, A&A, 526, A69
- Richer J., Michaud G., Turcotte S., 2000, ApJ, 529, 338
- Royer F., Zorec J., Gómez A. E., 2007, A&A, 463, 671
- Rufener F., 1989, A&AS, 78, 469
- Saio H., 2005, MNRAS, 360, 1022
- Simon K. P., Sturm E., 1994, A&A, 281, 286
- Skrutskie M. F. et al., 2006, AJ, 131, 1163
- Slettebak A., 1954, ApJ, 119, 146
- Slettebak A., 1955, ApJ, 121, 653
- Smalley B. et al., 2011, A&A, 535, A3
- Smalley B. et al., 2014, A&A, 564, A69
- Smith J. C. et al., 2012, PASP, 124, 1000
- Springer O. M., Shaviv N. J., 2013, MNRAS, 434, 1869
- Stibbs D. W. N., 1950, MNRAS, 110, 395
- Stumpe M. C. et al., 2012, PASP, 124, 985
- Tal-Or L., Faigler S., Mazeh T., 2014, preprint (arXiv:e-prints)
- Théado S., Vauclair S., Alecian G., Le Blanc F., 2009, ApJ, 704, 1262
- Thompson S. E. et al., 2012, ApJ, 753, 86
- Tkachenko A. et al., 2013, A&A, 556, A52
- Turcotte S., Charbonneau P., 1993, ApJ, 413, 376
- Turcotte S., Richer J., Michaud G., Christensen-Dalsgaard J., 2000, A&A, 360, 603
- Uytterhoeven K. et al., 2011, A&A, 534, A125
- Van Reeth T. et al., 2014, preprint (arXiv:e-prints)
- Venn K. A., Lambert D. L., 1990, ApJ, 363, 234
- Waelkens C., Rufener F., 1983, A&A, 121, 45
- Welsh W. F. et al., 2011, ApJS, 197, 4
- Wintz K., Casey M., Guenther D., 2014, in Guzik J. A., Chaplin W. J., Handler G., Pigulski A., eds, Proc. IAU Symp. 301, Precision Asteroseismology. Cambridge Univ. Press, Cambridge, p. 149

## APPENDIX A: UNDETECTED BINARIES

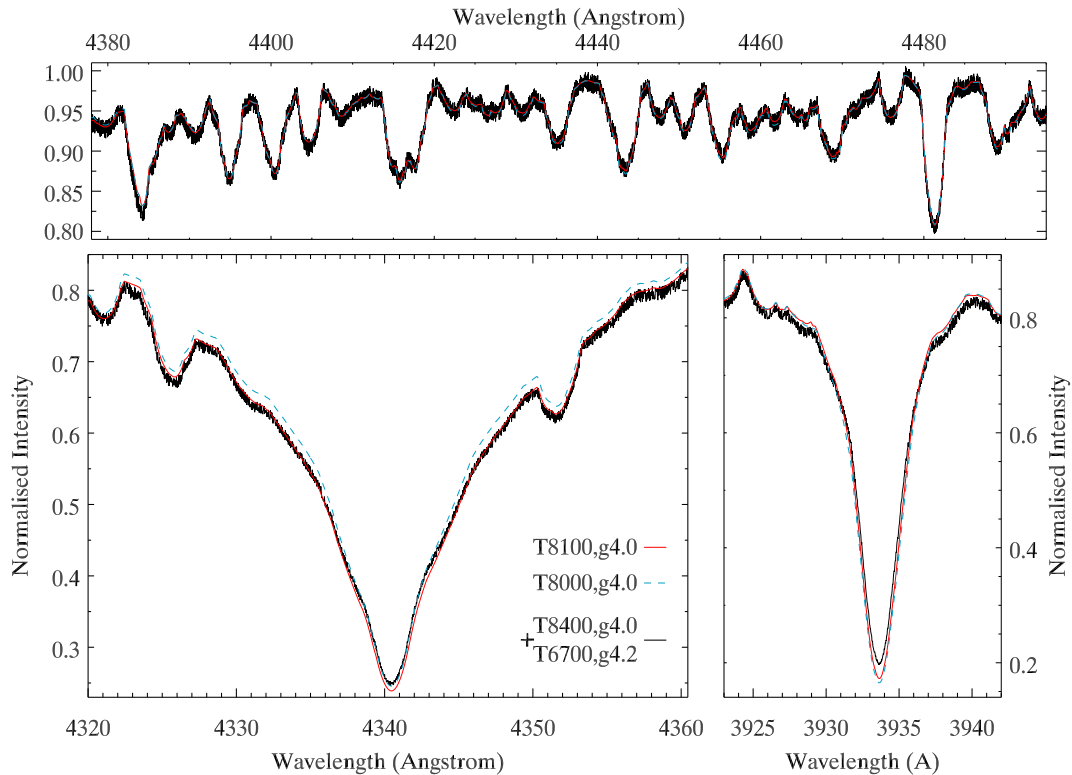
We evaluated whether non-pulsators in the  $\delta$  Sct instability strip can be explained as unresolved binaries. If the two components of the binary lie outside the  $\delta$  Sct instability strip, but their composite spectrum is analysed as a single star, it may appear as a non-pulsator inside the instability strip.

The scenario most likely to be observed is a pair of main-sequence stars with a mass ratio close to 1.0. We considered a binary with one star on the blue edge of the  $\delta$  Sct instability strip ( $T_{\text{eff}} = 8400$  K and  $\log g = 4.0$ ) and another of the same age at the red edge ( $T_{\text{eff}} = 6700$  K and  $\log g = 4.2$ ). The stars have masses of 2.06 and 1.40  $M_{\odot}$  and luminosities of 25.2 and 4.3  $L_{\odot}$ , respectively. Both have  $[\text{Fe}/\text{H}] = 0.0$ . We computed their synthetic spectra using SPECTRUM and its auxiliary programs (Gray 1999), from ATLAS9 atmospheric models (Kurucz 1993) using line lists and opacity distribution functions from (Castelli & Hubrig 2004). The spectra were rotationally broadened to 100  $\text{km s}^{-1}$  using a limb-darkening coefficient of 0.6. This rotation velocity is common in late A stars, for which the modal rotation velocity is 160  $\text{km s}^{-1}$  (Abt & Morrell 1995), but 100  $\text{km s}^{-1}$  was chosen to coincide with the measured  $v \sin i$  values of apparently single stars in Table 2. We set the binary orbital period to 20 d, that being a rough limit below which binaries experience strong tides and become Am stars (Debernardi 2000). In the examples that follow, the orbital phase was changed from 0 to  $\pi/2$ , corresponding to zero and maximal radial velocity separation of the two components. We combined the spectra using the stellar luminosities as weights. We degraded the composite spectrum to a signal-to-noise ratio (S/N) of 70 to match our HERMES spectra in the equivalent (blue–violet) spectral region.

We show that the resulting composite spectrum at zero radial-velocity separation in Fig. A1, for three spectral regions that are important in the parametrization of A-star atmospheres: the H  $\gamma$  line, the Ca II K line and a region rich in metal lines at around 4400 Å. The wings of the H  $\gamma$  line have high temperature sensitivity in A stars. In Fig. A1, the wings of H  $\gamma$  for the composite spectrum match a synthetic spectrum of a single star with  $T_{\text{eff}} = 8100$  K, i.e. 300 K lower than the primary of the binary system. The fit to the core is not as good, but this is a common problem in high-resolution spectral analyses and is not of concern. An 8000-K star is also shown to illustrate the 100-K ( $1\sigma$ ) error bars in  $T_{\text{eff}}$ , and is a poorer match to the H  $\gamma$  wings. Metal lines are not as sensitive to temperature in these stars, so that they match both the 8000- and 8100-K stars. Neither spectrum fits the composite well near the Ca II K line. This is the spectral region most likely to hint at a composite spectrum, given its rapid change in strength with temperature. However, at the peak of the Balmer jump, it is also very prone to normalization errors, which could easily be responsible for such small differences in observed line strength. Furthermore, this resonance line is extremely sensitive to the Ca abundance, which even in normal A stars shows large star-to-star scatter (up to 0.6 dex; Gebran et al. 2010). From this example, we conclude that 300-K discrepancies in  $T_{\text{eff}}$  are easily introduced when a composite spectrum is interpreted as a single star.

We made a similar comparison (same  $v \sin i$  and orbital phase) for a slightly more evolved primary star ( $T_{\text{eff}} = 8200$  K,  $\log g = 3.8$ ) of the same mass. The more massive star evolves more rapidly than the 1.4  $M_{\odot}$  star, whose  $\log g$  value is unchanged (to two significant figures) at the increased age. Now, the increased luminosity of the primary increases its dominance of the composite spectrum, and the temperature discrepancy is reduced to 150 K (or  $1.5\sigma$ ).

Binaries composed of a post-main-sequence star and a main-sequence star of lower mass are less likely, due to the short



**Figure A1.** Three synthesized spectra: a binary (black lines) composed of stars at 8400 K and 6700 K, having  $\log g = 4.0$  and 4.2, respectively; a single star with  $T_{\text{eff}} = 8100$  K and  $\log g = 4.0$  (solid red lines); and a single star with  $T_{\text{eff}} = 8000$  K and  $\log g = 4.0$  (dashed cyan lines). The top panel shows a spectral region rich in metal lines, the left-hand panel shows the H  $\gamma$  line and the right-hand panel shows the Ca II K line. Each spectrum has  $[\text{Fe}/\text{H}] = 0.0$  and  $v \sin i = 100 \text{ km s}^{-1}$ . The binary RV separation is  $0 \text{ km s}^{-1}$ , and the spectra are weighted by their luminosity ratio ( $= 25.2 : 4.3$ ). A  $T_{\text{eff}}$  discrepancy of 300 K could be easily introduced if the unresolved binary were treated as a single star.

time-scales for which a post-main-sequence star is observed near the  $\delta$  Sct instability strip. However, given the small numbers of non-pulsators observed inside the instability strip, their consideration remains important. Furthermore, if Star #22 were to be explained as a composite spectrum, the hypothetical binary system would clearly require a bright, red component. We combined spectra of a 2.4- and a 2.1- $M_{\odot}$  star at an age of 686 Myr, when the primary is in the post-main-sequence expansion phase ( $T_{\text{eff}} = 6200$  K,  $\log g = 3.1$ ) and the secondary is only half-way through its main-sequence lifetime ( $T_{\text{eff}} = 8500$  K,  $\log g = 4.0$ ). The composite is easily recognized; the giant has very narrow H-line wings and its cool temperature leads to a broad Ca II K line, in direct contrast to its hotter main-sequence companion. While a main-sequence star near F0 could mimic the H lines or metal lines independently, it fails utterly at the blend of H  $\epsilon$  and Ca II H at  $3968 \text{ \AA}$ . We thus do not expect composite spectra of post-main-sequence and main-sequence stars to be misinterpreted as single stars.

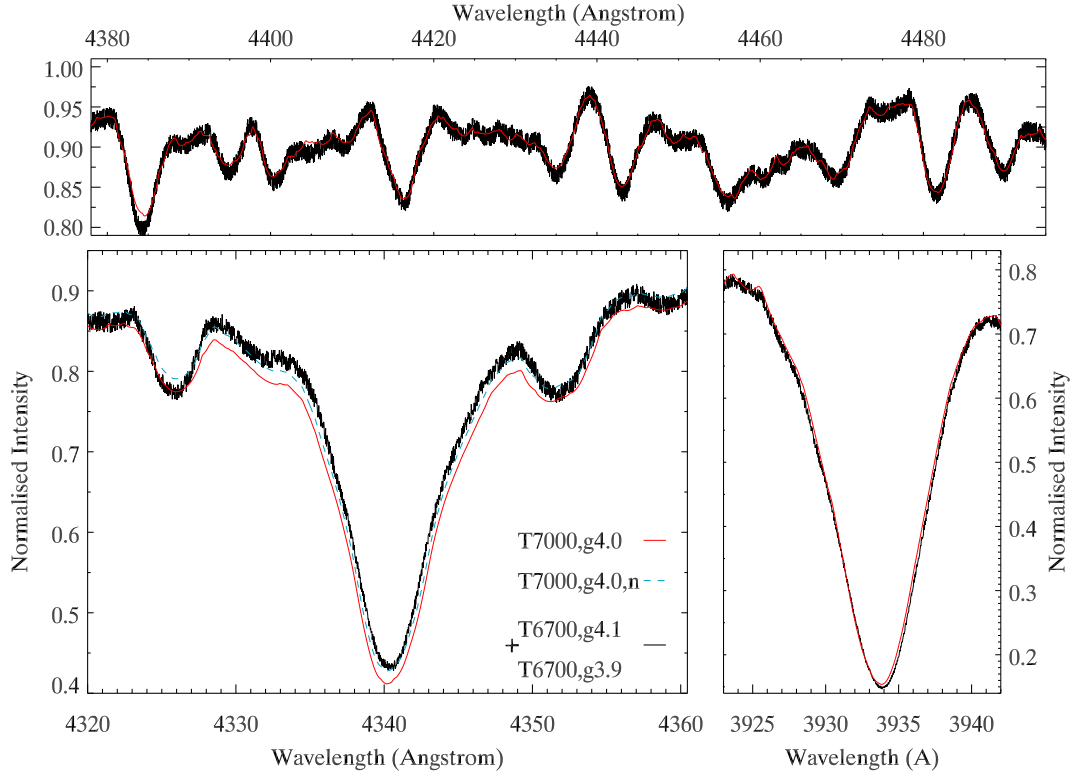
We have heretofore presented examples with orbital phases of zero (without eclipses), where the spectra have zero radial velocity difference. Small radial velocity differences are also obtained for long orbital periods or low-inclination systems. The former cases lend themselves to interferometry and direct imaging, while the latter cases are complicated, as the components are observed with low  $v \sin i$  and have non-uniform surface temperatures and gravities due to rotational distortion, as in the case of Vega (Peterson et al. 2006). Spectroscopy is particularly suited to detecting binary systems where  $i \sim 90^\circ$  and where substantial radial velocity variation occurs.

Fig. A2 shows a composite spectrum at orbital phase  $\pi/2$ , where the radial velocity difference amounts to  $113 \text{ km s}^{-1}$ . This is where the stellar rotational velocity becomes important: slow rotators will produce obvious double-lined spectra, while rapid rotators will have blended, asymmetric lines. Finding a line-free continuum for normalization is an added difficulty in the analysis of rapid rotators, regardless of S/N and spectral resolution. Spectral reduction, including order merging and normalization, can introduce similar peculiarities into spectra as binarity, and the two effects are difficult to distinguish. The input spectra for Fig. A2 each have  $T_{\text{eff}} = 6700$  K,  $[\text{Fe}/\text{H}] = 0.0$  and  $v \sin i = 160 \text{ km s}^{-1}$ , but the coeval stars have different masses ( $m_1 = 1.59 M_{\odot}$ ,  $m_2 = 1.45 M_{\odot}$ ) and thus different  $\log g$  (3.9 and 4.1). We conclude that any of the stars that lie  $1\sigma$  to  $2\sigma$  inside the red edge could result from undetected binaries containing two main-sequence stars just beyond the red edge. This is a natural consequence of the large number of free parameters involved with modelling two stars.

While methods exist for disentangling binary spectra when a set of composite spectra is available for a range of orbital phases (e.g. Simon & Sturm 1994), the requirements exceed the availability of data in this and indeed most cases, where single-epoch observations are the norm, and where there are no eclipses to ‘mask’ one of the stars.

## APPENDIX B: NOTES ON SPECTRAL TYPES

In this appendix, we provide the notes on spectral types assigned to the stars in Table 1. In the following, ALE stands for anomalous



**Figure A2.** A synthetic binary spectrum of stars with  $T_{\text{eff}} = 6700, 6700$  K,  $\log g = 3.9, 4.1$ ,  $[\text{Fe}/\text{H}] = 0.0, 0.0$  and  $v \sin i = 160, 160$  km s $^{-1}$  (solid black line). The RV separation is 113 km s $^{-1}$ , and the spectral contributions are weighted by luminosity ratio. A single spectrum of a star with  $T_{\text{eff}} = 7000$  K,  $\log g = 4.0$ ,  $[\text{Fe}/\text{H}] = 0.1$  and  $v \sin i = 180$  km s $^{-1}$  (solid red line) is a near morphological match, but a better match with the same spectrum can be achieved with a different normalization (dashed blue line, left-hand panel only).

luminosity effect (cf. Barry 1970, where the term first appears in print, and also Gray & Corbally 2009 for a thorough explanation).

#3 Slight Ca weakness in both the K line and  $\lambda 4226$  line.

#9 Metal lines and Ca II K line are slightly weaker than A3 in spite of rotation, but hydrogen lines match A3 Va.

#10 Very close to the A1 IVs standard ( $\rho$  Peg) except for a slightly fainter luminosity class.

#14 No obvious weakness in Ca I 4226, but Sr II 4216 is enhanced. Sr II 4077 is clearly enhanced. The redward third of Mn I 4030 is weakened, as is characteristic of Am stars. Slight ALE.

#18 Typical Am star: Ca weak, Sr strong.

#19 Rapid rotator. Ca II K line best matches A0.5 and is broad. No obvious He lines. Metals weaker than A1. Shallow H cores do not fit at any type.

#36 Almost featureless spectrum. Metal lines are absent, with the exception of a very weak Mg II 4481 (B7) and weak Ca II K line (B8). He lines at  $\lambda\lambda 4026$  and  $4471$  are slightly stronger than A0. H wings are only slightly narrower than A0 (indicating B9.5, like the He lines), but are too shallow in the core.

#38 Metal line type is about A3 or A4s (assuming luminosity class IV/V), but H line type could not be matched, possibly due to a normalization issue.

#40 Classical Am signature, with enhanced Sr and weak Ca. The redward third of Mn I 4030 is weak. Luminosity class based on Fe/Ti II 4172-9 blends, as is typical for Am stars, but hydrogen lines match the A3 Va standard. ALE.

#42 Extreme Am star. Sr lines stronger still than the F3 standard. Large ALE.

#43 Extreme Am. Slight ALE.

#46 A superb match to the F2 Vs standard, 78 UMa.

#51 Luminosity criteria are in disagreement. The breadth of the H lines favour a dwarf classification, but the Fe II/Ti II blends favour a giant. This illustrates the difficulty of luminosity classification at A5. The Ca II K line type is A6. Compromise type given is A5 IV, but the star does not match the A5 IV standard well. A metal-rich, early A ( $\sim$ A3) star was considered, but neutral metals appear no earlier than A3. Oddly, Mn I 4030 is enhanced, but is usually expected to show a mild negative luminosity effect.

This paper has been typeset from a  $\text{\LaTeX}$  file prepared by the author.